



# The Sizewell C Project

## 6.14 Environmental Statement Addendum Volume 2: Environmental Statement Addendum Figures Chapter 4 Southern Park and Ride

---

Revision: 1.0  
Applicable Regulation: Regulation 5(2)(a)  
PINS Reference Number: EN010012

---

January 2021

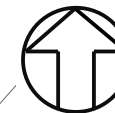
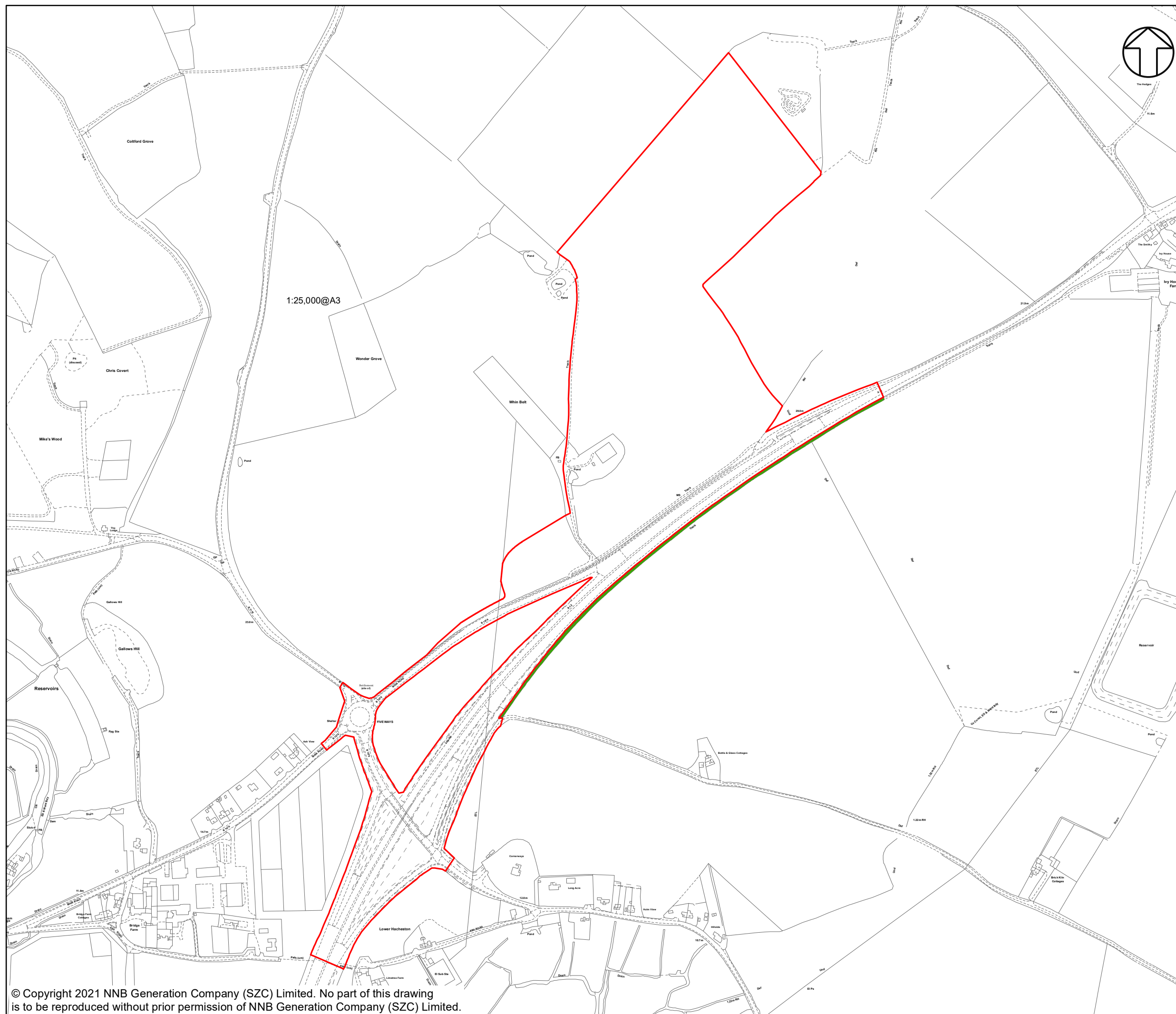
Planning Act 2008  
Infrastructure Planning (Applications: Prescribed  
Forms and Procedure) Regulations 2009



## **CONTENTS**


- FIGURE 4.2.1: REVISED SOUTHERN PARK AND RIDE SITE BOUNDARY
- FIGURE 4.2.2: ILLUSTRATIVE MASTERPLAN FOR THE SOUTHERN PARK AND RIDE AT WICKHAM MARKET
- FIGURE 4.2.3: ILLUSTRATIVE DRAINAGE PLAN FOR THE SOUTHERN PARK AND RIDE AT WICKHAM MARKET
- FIGURE 4.2.4 ILLUSTRATIVE LIGHTING PLAN FOR THE SOUTHERN PARK AND RIDE AT WICKHAM MARKET
- FIGURE 4.2.5 PARAMETER PLAN FOR THE SOUTHERN PARK AND RIDE AT WICKHAM MARKET






NOTES

**KEY**

 SOUTHERN PARK AND RIDE  
DEVELOPMENT SITE BOUNDARY

 SITE BOUNDARY REDUCTION

NOT PROTECTIVELY MARKED

COPYRIGHT

Reproduced from Ordnance Survey map with the permission of Ordnance Survey on behalf of the controller of Her Majesty's Stationary Office © Crown Copyright (2021). All Rights reserved. NNB GenCo 0100060408.



DOCUMENT:  
ENVIRONMENTAL STATEMENT ADDENDUM  
VOLUME 2  
CHAPTER 4  
SOUTHERN PARK AND RIDE

DRAWING TITLE:  
REVISED SOUTHERN PARK AND RIDE  
SITE BOUNDARY

DRAWING NO:  
FIGURE 4.2.1

DATE:	DRAWN:	SCALE :	REV
JAN 2021	C.N.	1:5,500 @A3	01

SCALE BAR

0 50 100 150 200 250 M

© Copyright 2021 NNB Generation Company (SZC) Limited. No part of this drawing is to be reproduced without prior permission of NNB Generation Company (SZC) Limited.





NOTES

KEY

- SOUTHERN PARK AND RIDE DEVELOPMENT SITE BOUNDARY
- SECURITY FENCE
- ECOLOGICAL FENCE
- ACCESS ROAD
- PEDESTRIAN WALKWAY / ZONE
- WELFARE/SECURITY BUILDINGS
- SHELTERS (BUS/CYCLE)
- LIGHTING COLUMNS
- GRASSED SPOIL BUNDS
- EXISTING VEGETATION
- PROPOSED PLANTING
- EXISTING DRY POND
- GRASSED AREAS
- SURFACE WATER ATTENUATION
- SWALE
- DITCH
- BUFFER ZONE
- TRAFFIC INCIDENT MANAGEMENT AREA
- EXISTING ACCESS TRACK RETAINED
- EXISTING PUBLIC RIGHT OF WAY

NOT PROTECTIVELY MARKED

**COPYRIGHT**  
Reproduced from Ordnance Survey map with the permission of Ordnance Survey on behalf of the controller of Her Majesty's Stationery Office © Crown Copyright (2021). All Rights reserved. NNB GenCo 0100060408.  
Esri, DigitalGlobe, GeoEye, Earthstar Geographics, CNES/Airbus DS, USDA, USGS, AeroGRID, IGN, and the GIS User Community.  
PROW data sourced from Suffolk CC on 27/02/2019 under OGL v3.0 are an interpretation of the Definitive Map and Statement, not the Definitive Map itself, and should not be relied on for determining the position or alignment of any public right of way. The data contains Ordnance Survey data © Crown copyright and database right 2019.

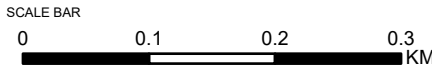


**DOCUMENT:**  
ENVIRONMENTAL STATEMENT ADDENDUM  
VOLUME 2  
CHAPTER 4  
SOUTHERN PARK AND RIDE

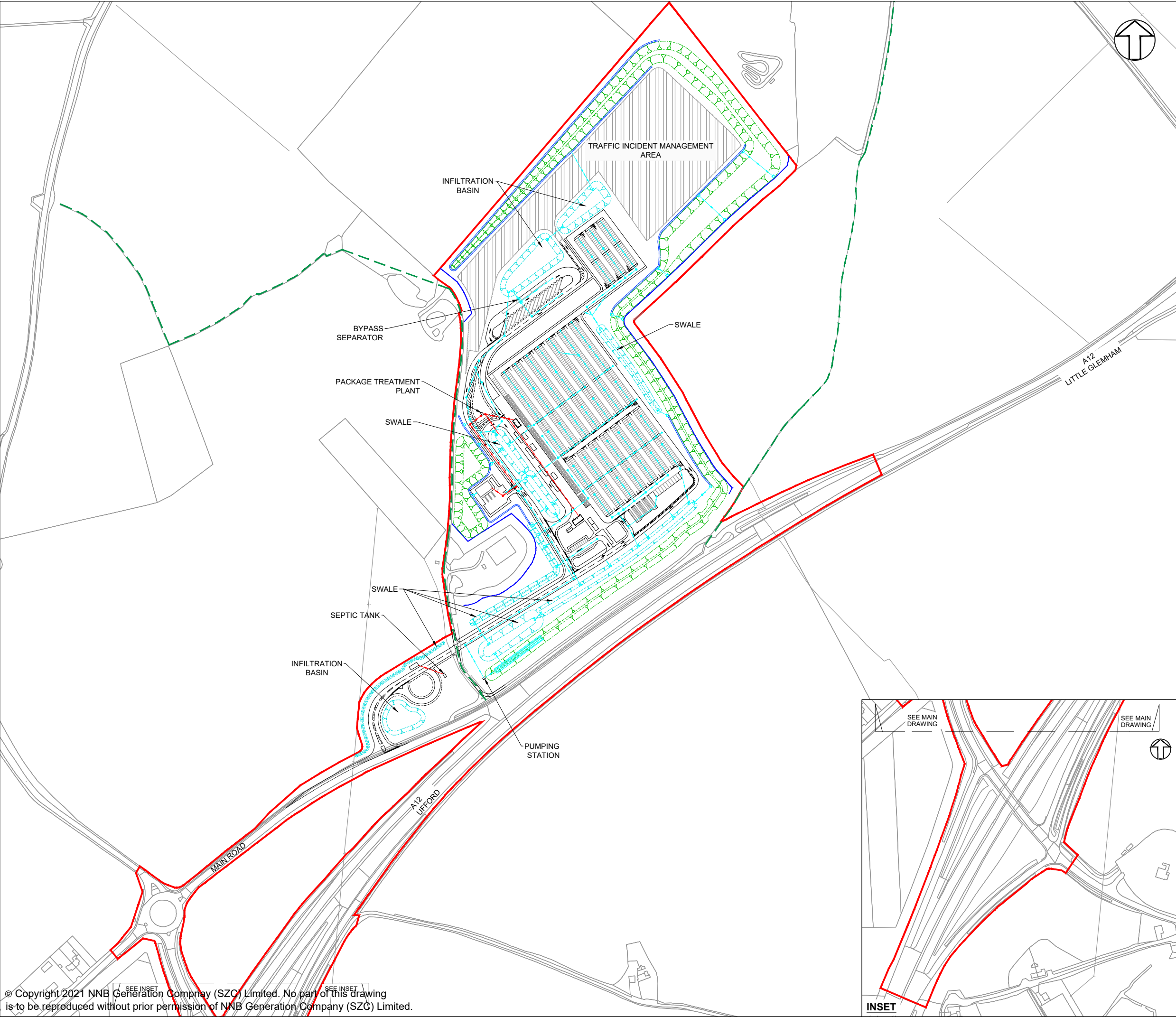
**DRAWING TITLE:**  
ILLUSTRATIVE MASTERPLAN FOR THE  
SOUTHERN PARK AND RIDE AT WICKHAM  
MARKET

**DRAWING NO:**  
FIGURE 4.2.2

DATE:	DRAWN:	SCALE:	REVISION:
JAN 2021	R.K.	1:6,000 @A3	2.0







**NOTES:**

- Do not scale from this drawing. All dimensions are in metres unless noted otherwise.

- KEY:**
- SOUTHERN PARK AND RIDE DEVELOPMENT SITE BOUNDARY
  - BUFFER ZONE
  - SWALE / INFILTRATION BASIN (INDICATIVE)
  - LANDSCAPE BUND
  - PROPOSED SURFACE WATER DRAINAGE (INDICATIVE)
  - PROPOSED FOUL WATER DRAINAGE (INDICATIVE)
  - PROPOSED GEOCELLULAR UNDERGROUND STORAGE (64M x 6M) (INDICATIVE)
  - PROPOSED DITCH (INDICATIVE)
  - PROPOSED BY-PASS SEPARATOR (INDICATIVE)

NOT PROTECTIVELY MARKED

**COPYRIGHT:**  
 Reproduced from Ordnance Survey map with the permission of Ordnance Survey on behalf of the controller of Her Majesty's Stationery Office © Crown copyright (2019). All Rights reserved. NNB GenCo Licence: 0100060408



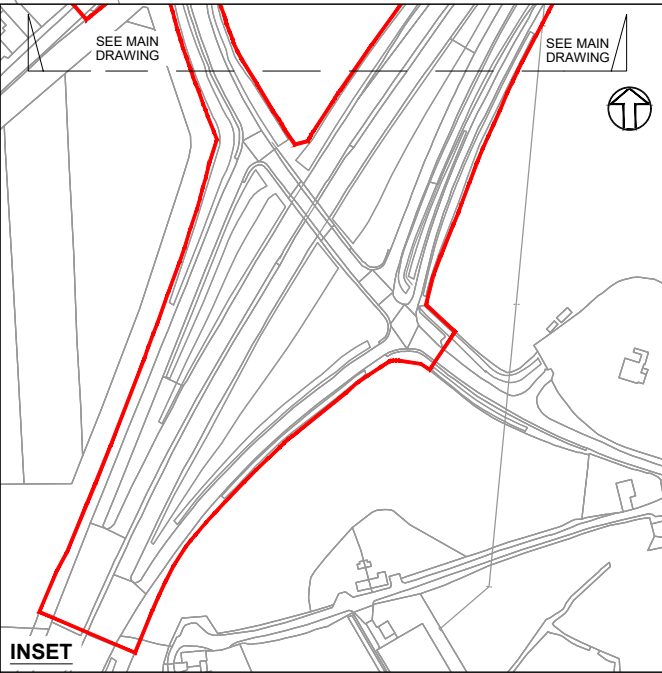
**DOCUMENT:**  
 SIZEWELL C  
 ENVIRONMENTAL STATEMENT ADDENDUM  
 VOLUME 2  
 CHAPTER 4  
 SOUTHERN PARK AND RIDE

**DRAWING TITLE:**  
 ILLUSTRATIVE DRAINAGE PLAN FOR THE SOUTHERN PARK AND RIDE AT WICKHAM MARKET

**DRAWING NO:**  
 FIGURE 4.2.3

DATE: JAN 2021	DRAWN: N.K.S.	SCALE: 1:4,000 @A3	REVISION: 2.0
-------------------	------------------	-----------------------	------------------

SCALE BAR:  
 50m 0 50 100 150  
 SCALE IN METRES  
 1:4000



LANTERN SPECIFICATION	
LANTERN TYPE	URBIS AMPERA M10 LANTERN
LUMINAIRE REFERENCE	AMPERA/M10/5068/32LED/350mA/3950LUMEN
COMPLETE WITH:	
32 LED'S	
NEMA PHOTOCELL	
TYPE 5068 REFLECTOR	
FLAT GLASS PROTECTOR	
MOUNTING DETAILS	
HEIGHT	6.0 METRES
INCLINATION	0 DEGREE'S (WITH RESPECT TO HORIZONTAL PLANE)
BRACKET LENGTH	0.5 METRE
LAMP OUTPUT	3,950 LUMENS
LANTERN SPECIFICATION	
LANTERN TYPE	URBIS AMPERA M10 LANTERN
LUMINAIRE REFERENCE	AMPERA/M10/5068/16LED/500mA/2570LUMEN
COMPLETE WITH:	
16 LED'S	
NEMA PHOTOCELL	
TYPE 5068 REFLECTOR	
FLAT GLASS PROTECTOR	
MOUNTING DETAILS	
HEIGHT	6.0 METRES
INCLINATION	0 DEGREE'S (WITH RESPECT TO HORIZONTAL PLANE)
BRACKET LENGTH	0.5 METRE
LAMP OUTPUT	2,570 LUMENS
LANTERN SPECIFICATION	
LANTERN TYPE	URBIS AMPERA M10 LANTERN
LUMINAIRE REFERENCE	AMPERA/M10/5119/32LED/350mA/3980LUMEN
COMPLETE WITH:	
32 LED'S	
NEMA PHOTOCELL	
TYPE 5119 REFLECTOR	
FLAT GLASS PROTECTOR	
MOUNTING DETAILS	
HEIGHT	6.0 METRES
INCLINATION	0 DEGREE'S (WITH RESPECT TO HORIZONTAL PLANE)
BRACKET LENGTH	0.5 METRE
LAMP OUTPUT	3,980 LUMENS
LANTERN SPECIFICATION	
LANTERN TYPE	URBIS AMPERA M10 LANTERN
LUMINAIRE REFERENCE	AMPERA/M10/5068/48LED/350mA/5920LUMEN
COMPLETE WITH:	
48 LED'S	
NEMA PHOTOCELL	
TYPE 5068 REFLECTOR	
FLAT GLASS PROTECTOR	
MOUNTING DETAILS	
HEIGHT	6.0 METRES
INCLINATION	0 DEGREE'S (WITH RESPECT TO HORIZONTAL PLANE)
BRACKET LENGTH	0.5 METRE
LAMP OUTPUT	5,920 LUMENS
LANTERN SPECIFICATION	
LANTERN TYPE	URBIS AMPERA M10 LANTERN
LUMINAIRE REFERENCE	AMPERA/M10/5119/48LED/500mA/8000LUMEN
COMPLETE WITH:	
48 LED'S	
NEMA PHOTOCELL	
TYPE 5119 REFLECTOR	
FLAT GLASS PROTECTOR	
MOUNTING DETAILS	
HEIGHT	6.0 METRES
INCLINATION	0 DEGREE'S (WITH RESPECT TO HORIZONTAL PLANE)
BRACKET LENGTH	0.5 METRE
LAMP OUTPUT	8,000 LUMENS
LANTERN SPECIFICATION	
LANTERN TYPE	URBIS AMPERA M10 LANTERN
LUMINAIRE REFERENCE	AMPERA/M10/5117/64LED/700mA/14160LUMEN
COMPLETE WITH:	
64 LED'S	
NEMA PHOTOCELL	
TYPE 5117 REFLECTOR	
FLAT GLASS PROTECTOR	
MOUNTING DETAILS	
HEIGHT	10.0 METRES
INCLINATION	0 DEGREE'S (WITH RESPECT TO HORIZONTAL PLANE)
BRACKET LENGTH	1.5 METRE
LAMP OUTPUT	14,160 LUMENS



### NOTES:

- Do not scale from this drawing. All dimensions are in metres unless noted otherwise.
- Luminaires shall be of a type that controls the distribution of light and directs the light downwards onto the roads and footways and that avoids light and glare overspill and sky glow.
- The represented Isolux lighting contours do not take into account the existing luminaires located by the approaching arm of the B1078/B1116 intersection.
- The adoptable road network, associated with the main road, is designed to BS 5489-1. This is based on lighting classifications determined by WSP, being class M4.
- The non adoptable incoming access roads and site roads are designed to BS5489-1, with the road lighting designed to class P3 and P4 respectively.
- The parking area is designed to comply with BS 5489-1, with the main parking areas designed for Medium Traffic classification and lower usage areas for light traffic classification, as per BS 5489-1.
- A maintenance factor of 0.76 has been used in the lighting design simulation.
- Isolux contours indicated on the layout are reflective of a maintenance factor 1.0.
- Lighting columns within parking bay areas to be located on corners of parking bays and shall be provided with red and white reflective bands at 0.3m centres between 0.6m and 1.5m above proposed finished level.
- Light columns shall be located at the rear of footways unless agreed otherwise. In no circumstances shall the setback to light column face be less than 0.45m from the edge of the roadway.
- Isolux contours indicated on the drawing do not factor in the mitigation associated with the fitting of lighting shields to all perimeter light fittings.
- Where lighting columns are positioned at the intersection of parking bays, physical barrier protection shall be provided.
- Isolux contours indicated on the drawing do not factor in the mitigation associated with either ecological fencing, landscaping, topography or plants.
- This drawing has been compiled based upon the following design standards and guidance:
  - A: BS 5489-1: 2013
  - B: BS EN 12464-2: 2014
  - C: BS EN 13201: 2015
  - D: CIBSE Lighting guide 6
  - E: ILE Guidance for the reduction in obtrusive light.

### ISOLUX COLOUR KEY

0.1 LUX 1.0 LUX 5.0 LUX 7.5 LUX 10.0 LUX

### KEY

- SOUTHERN PARK AND RIDE DEVELOPMENT SITE BOUNDARY
- BUFFER ZONE
- LIGHTING LANTERN DEMOUNTABLE SHIELD TO REDUCE BACKWARD LIGHT SPILL (NOT TO SCALE)
- FIXED CCTV AND VISION SPY
- SECURITY FENCE (1.8M HIGH)
- GATE
- SWALE / INFILTRATION BASIN (INDICATIVE)
- LANDSCAPE BUND

### NOT PROTECTIVELY MARKED

### COPYRIGHT:

Reproduced from Ordnance Survey map with the permission of Ordnance Survey on behalf of the controller of Her Majesty's Stationary Office © Crown copyright (2019). All Rights reserved. NNB GenCo Licence: 0100060408

### DOCUMENT:

SIZEWELL C  
ENVIRONMENTAL STATEMENT ADDENDUM  
VOLUME 2  
CHAPTER 4  
SOUTHERN PARK AND RIDE

### DRAWING TITLE:

ILLUSTRATIVE LIGHTING PLAN FOR THE  
SOUTHERN PARK AND RIDE AT WICKHAM MARKET

### DRAWING NO:

FIGURE 4.2.4

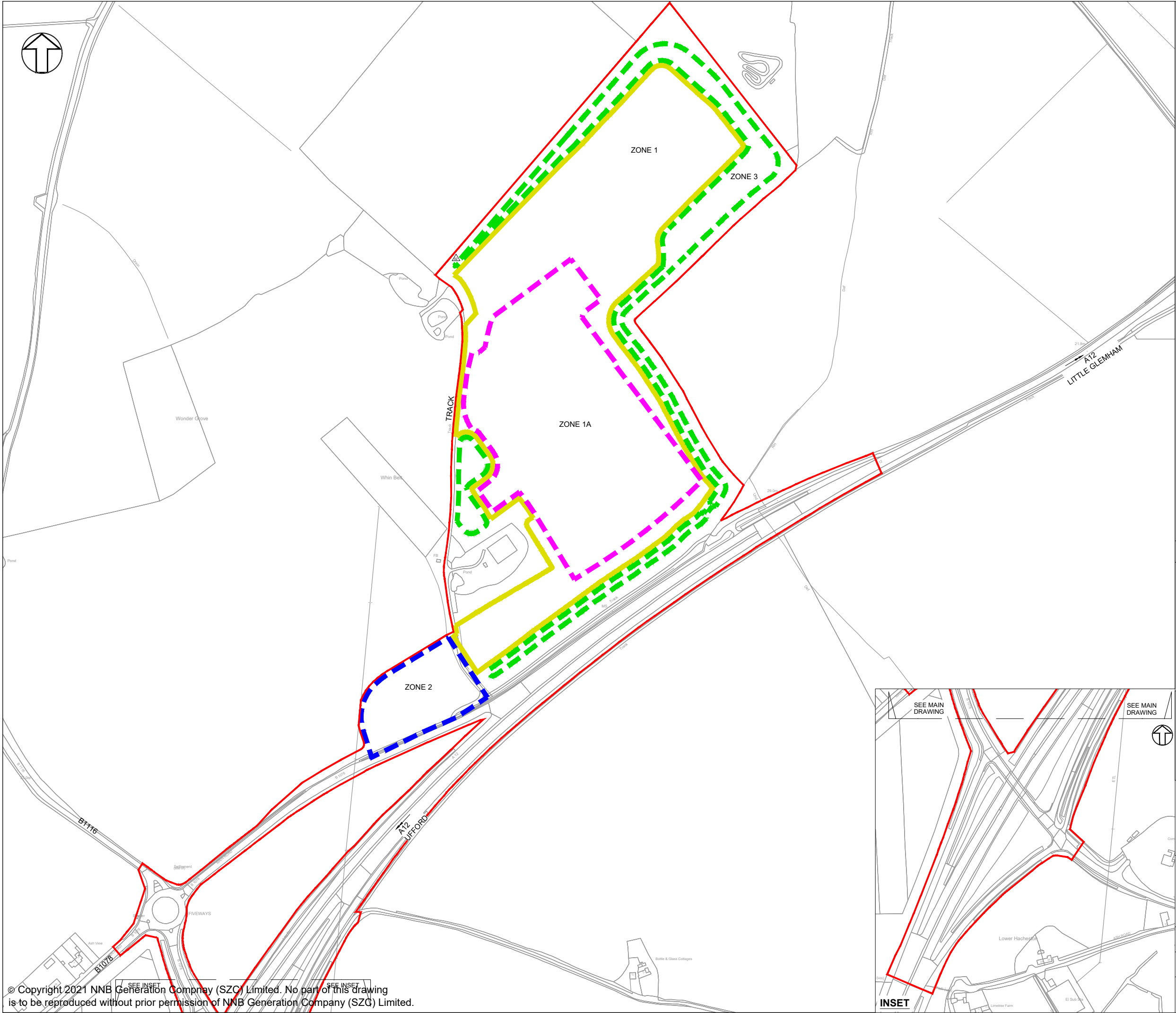
DATE:	DRAWN:	SCALE:	REVISION:
JAN 2021	N.K.S.	1:4,000 @A3	2.0

### SCALE BAR:

50m 0 50 100 150

SCALE IN METRES  
1:4000





**NOTES:**

- Do not scale from this drawing. All dimensions are in metres unless noted otherwise.

**KEY:**

— SOUTHERN PARK AND RIDE DEVELOPMENT SITE BOUNDARY

— ZONE 1

TO INCLUDE:

- OPERATIONAL PARK & RIDE FACILITY INCLUDING TIMA

- - - ZONE 1A

TO INCLUDE:

- AMENITY WELFARE BUILDING UP TO 4M
- SECURITY BUILDING UP TO 4M
- BUS SHELTERS UP TO 3M
- POSTAL CONSOLIDATION BUILDING UP TO 4M
- SMOKING SHELTERS (SMOKING/CYCLE)

- - - ZONE 2

TO INCLUDE:

- ACCESS ROAD
- SECURITY BOOTH UP TO 4M
- EXIT LOOP

- - - ZONE 3

TO INCLUDE:

- INDICATIVE POSITION OF LANDSCAPE BUND UP TO 3M

**NOT PROTECTIVELY MARKED**

**COPYRIGHT:**

Reproduced from Ordnance Survey map with the permission of Ordnance Survey on behalf of the controller of Her Majesty's Stationery Office © Crown copyright (2019). All Rights reserved. NNB GenCo Licence: 0100060408



**DOCUMENT:**

SIZEWELL C  
ENVIRONMENTAL STATEMENT ADDENDUM  
VOLUME 2  
CHAPTER 4  
SOUTHERN PARK AND RIDE

**DRAWING TITLE:**

PARAMETER PLAN FOR THE  
SOUTHERN PARK AND RIDE AT WICKHAM MARKET

**DRAWING NO:**

FIGURE 4.2.5

DATE:	DRAWN:	SCALE:	REVISION:
JAN 2021	N.K.S.	1:4,000 @A3	2.0

SCALE BAR:

50m 0 50 100 150

SCALE IN METRES  
1:4000