



The Sizewell C Project

6.14 Environmental Statement Addendum Volume 2: Environmental Statement Addendum Figures Chapter 2 Main Development Site Part 2 of 4

Revision: 1.0
Applicable Regulation: Regulation 5(2)(a)
PINS Reference Number: EN010012

January 2021

Planning Act 2008
Infrastructure Planning (Applications: Prescribed
Forms and Procedure) Regulations 2009



CONTENTS

PART 1 OF 4

- FIGURE 2.2.1: OPERATIONAL PARAMETER PLAN - BAT BARN
- FIGURE 2.2.2: CONSTRUCTION PARAMETER PLAN
- FIGURE 2.2.3: ILLUSTRATIVE VIEW OF THE PERMANENT BEACH LANDING FACILITY
- FIGURE 2.2.4: ILLUSTRATIVE VIEW OF THE TEMPORARY BEACH LANDING FACILITY
- FIGURE 2.2.5: ILLUSTRATIVE VIEW OF THE TEMPORARY BEACH LANDING FACILITY (ON BEACH)
- FIGURE 2.2.6: SIZEWELL B RELOCATED FACILITIES SITE LAYOUT IN THE APPLICATION
- FIGURE 2.2.7: SIZEWELL B RELOCATED FACILITIES REVISED SITE LAYOUT (OPTION 1)
- FIGURE 2.2.8: OPERATIONAL PARAMETER PLAN - MAIN PLATFORM
- FIGURE 2.2.9: ILLUSTRATIVE VIEW OF CORONATION WOOD DEVELOPMENT AREA (OPTION 1)
- FIGURE 2.2.10: ILLUSTRATIVE VIEW OF PILLBOX FIELD (OPTION 1)
- FIGURE 2.2.11: SIZEWELL B RELOCATED FACILITIES ALTERNATIVE LAYOUT (OPTION 2)
- FIGURE 2.2.12: OPERATIONAL PARAMETER PLAN - SIZEWELL B RELOCATED FACILITIES AND NATIONAL GRID LAND
- FIGURE 2.2.13: CURRENT AND PROPOSED LOCATIONS OF WATER RESOURCE STORAGE AREA
- FIGURE 2.2.14: INDICATIVE SKETCH OF FLOOD MITIGATION AREA AND WET WOODLAND HABITAT
- FIGURE 2.2.15: ILLUSTRATIVE VIEW OF THE SSSI CROSSING INCLUDED IN THE APPLICATION
- FIGURE 2.2.16: ILLUSTRATIVE VIEW OF THE PROPOSED CHANGE TO SSSI CROSSING
- FIGURE 2.2.17: LANDSCAPE RETENTION/ CLEARANCE - LOCATION 1 - IH10-IH25
- FIGURE 2.2.18: LANDSCAPE RETENTION/ CLEARANCE - LOCATION 2 IH08
- FIGURE 2.2.19: LANDSCAPE RETENTION/ CLEARANCE - LOCATION 3 CLOSE TO RAIL ROUTE ALIGNMENT

- FIGURE 2.2.20: SEA DEFENCE CROSS SECTION (OVERLAY)
- FIGURE 2.2.21: TEMPORARY SEA DEFENCE CROSS SECTION
- FIGURE 2.2.22: PERMANENT SEA DEFENCE CROSS SECTION
- FIGURE 2.2.23: NORTHERN MOUND CROSS SECTION
- FIGURE 2.2.24: ILLUSTRATIVE VIEW OF THE PROPOSED CHANGE TO THE PERMANENT HCDF
- FIGURE 2.2.25: PERMANENT SEA DEFENCE CROSS SECTION (ADAPTIVE)
- FIGURE 2.2.26: PAKENHAM FEN MEADOW COMPENSATION AREA SITE BOUNDARY
- FIGURE 2.2.27: FEN MEADOW AT PAKENHAM ENVIRONMENTAL SITE CONTEXT PLAN
- FIGURE 2.2.28: CHANGES TO THE SITE BOUNDARY OF THE MAIN DEVELOPMENT SITE
- FIGURE 2.2.29: CHANGES TO THE SITE BOUNDARY OF THE FEN MEADOW COMPENSATION AREA AT HALESWORTH
- FIGURE 2.2.30: CHANGES TO THE SITE BOUNDARY OF THE FEN MEADOW COMPENSATION AREA AT BENHALL
- FIGURE 2.2.31: CHANGES TO THE SITE BOUNDARY OF THE MARSH HARRIER HABITAT IMPROVEMENT AREA AT WESTLETON
- FIGURE 2.2.32: PROPOSED BRIDLEWAY LINK BETWEEN ALDHURST FARM AND KENTON HILLS

PART 2 OF 4 (THIS PART)

- FIGURE 2.2.33: CONSTRUCTION MASTERPLAN
- FIGURE 2.2.34: CONSTRUCTION PHASE 1
- FIGURE 2.2.35: CONSTRUCTION PHASE 2
- FIGURE 2.2.36: CONSTRUCTION PHASE 3
- FIGURE 2.2.37: CONSTRUCTION PHASE 4
- FIGURE 2.2.38: CONSTRUCTION PHASE 5
- FIGURE 2.2.39: LANDSCAPE RETENTION PLAN
- FIGURE 2.2.40: SITE CLEARANCE PLAN
- FIGURE 2.2.41: LANDSCAPE MASTERPLAN (OPERATIONAL)

PART 3 OF 4

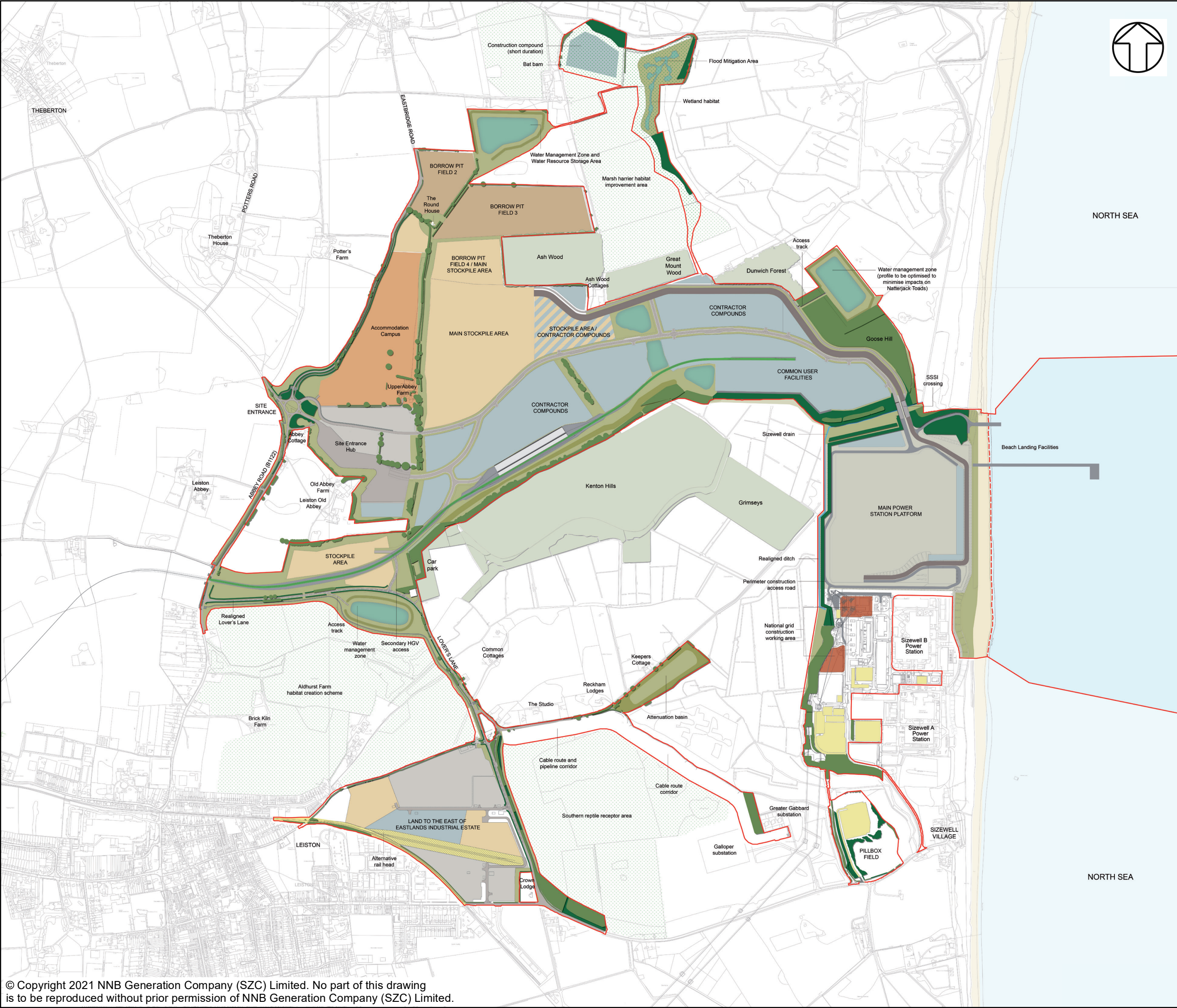
- FIGURE 2.7.1: MAIN DEVELOPMENT SITE AIR QUALITY REPRESENTATIVE RECEPTOR LOCATIONS
- FIGURE 2.7.2: PEAK MONTHLY MEAN DUST DEPOSITION FROM COMBINED MITIGATED EROSION OF ACTIVE STOCKPILE AREA AND DROPPING AND LOADING OPERATIONS
- FIGURE 2.7.3: PEAK PREDICTED DUST DEPOSITION RATES FROM CONTROLLED LIME APPLICATION
- FIGURE 2.8.1: ZONE OF THEORETICAL VISIBILITY MODEL OF ENHANCED PERMANENT BEACH LANDING FACILITY PARAMETERS (CONSTRUCTION ZONE C16)
- FIGURE 2.8.2: ZONE OF THEORETICAL VISIBILITY MODEL OF TEMPORARY BEACH LANDING FACILITY PARAMETERS (CONSTRUCTION ZONE C20)
- FIGURE 2.8.3: ZONE OF THEORETICAL VISIBILITY MODEL OF MARINE SHAFTS AND TUNNELLING WORKS PARAMETERS (CONSTRUCTION ZONE C21)
- FIGURE 2.8.4: ZONE OF THEORETICAL VISIBILITY OF HARD COASTAL DEFENCE PARAMETERS
- FIGURE 2.8.5: REPRESENTATIVE VIEWPOINT 6: PHOTOGRAPH PANEL (SUFFOLK COAST PATH EAST OF GOOSE HILL)
- FIGURE 2.8.6: REPRESENTATIVE VIEWPOINT 10: PHOTOGRAPH PANEL (SUFFOLK COAST PATH AND SANDLINGS WALK EAST OF HILL WOOD)
- FIGURE 2.8.7: REPRESENTATIVE VIEWPOINT 14: PHOTOGRAPH PANEL (SUFFOLK COAST PATH AT MINSMERE SLUICE)
- FIGURE 2.8.8: REPRESENTATIVE VIEWPOINT 15: PHOTOGRAPH PANEL (BEACH AT THORPE NESS)
- FIGURE 2.8.9: REPRESENTATIVE VIEWPOINT 16: RSPB MINSMERE (WHIN HILL)
- FIGURE 2.8.10: REPRESENTATIVE VIEWPOINT 17: PHOTOGRAPH PANEL (NATIONAL TRUST DUNWICH COASTGUARD COTTAGES CAR PARK)
- FIGURE 2.8.11: REPRESENTATIVE VIEWPOINT 23: PHOTOGRAPH PANEL (PROMENADE, SOUTHWOLD AT JUNCTION WITH EAST CLIFF ROAD)
- FIGURE 2.8.12: REPRESENTATIVE VIEWPOINT 26: PHOTOGRAPH PANEL (1800M DIRECTLY EAST OF SIZEWELL POWER STATIONS)

- FIGURE 2.8.13: REPRESENTATIVE VIEWPOINT 31: PHOTOGRAPH PANEL (SHINGLE BEACH EAST OF SECONDARY SEA DEFENCE BUND)
- FIGURE 2.8.14: NIGHT TIME REPRESENTATIVE VIEWPOINT 6: (SUFFOLK COAST PATH EAST OF GOOSE HILL)
- FIGURE 2.8.15: NIGHT TIME REPRESENTATIVE VIEWPOINT 10: PHOTOGRAPH PANEL (SUFFOLK COAST PATH AND SANDLINGS WALK EAST OF HILL WOOD)
- FIGURE 2.8.16: NIGHT TIME REPRESENTATIVE VIEWPOINT 14: PHOTOGRAPH PANEL (SUFFOLK COAST PATH AT MINSMERE SLUICE)
- FIGURE 2.8.17: NIGHT TIME REPRESENTATIVE VIEWPOINT 17: PHOTOGRAPH PANEL (NATIONAL TRUST DUNWICH COASTGUARD COTTAGES CAR PARK)
- FIGURE 2.8.18: NIGHT TIME REPRESENTATIVE VIEWPOINT 26: PHOTOGRAPH PANEL (1800M DIRECTLY EAST OF SIZEWELL POWER STATIONS)

PART 4 OF 4

- FIGURE 2.8.19: REPRESENTATIVE VIEWPOINTS: CONSTRUCTION PHASE PARAMETERS BASED PHOTOWIRE – VIEWPOINT 8: FOOTPATH NORTH OF LEISTON ABBEY
- FIGURE 2.8.20: REPRESENTATIVE VIEWPOINTS: CONSTRUCTION PHASE PARAMETERS BASED PHOTOWIRE – VIEWPOINT 14: SUFFOLK COAST PATH AT MINSMERE SLUICE
- FIGURE 2.8.21: REPRESENTATIVE VIEWPOINTS: CONSTRUCTION PHASE PARAMETERS BASED PHOTOWIRE – VIEWPOINT 16: RSPB MINSMERE (WHIN HILL)
- FIGURE 2.8.22: REPRESENTATIVE VIEWPOINTS: CONSTRUCTION PHASE PARAMETERS BASED PHOTOWIRE – VIEWPOINT 17: NATIONAL TRUST DUNWICH COASTGUARD COTTAGES CAR PARK
- FIGURE 2.8.23: REPRESENTATIVE VIEWPOINTS: CONSTRUCTION PHASE PARAMETERS BASED PHOTOWIRE – VIEWPOINT 28: FOOTPATH SOUTH OF THEBERTON
- FIGURE 2.8.24: REPRESENTATIVE VIEWPOINTS: CONSTRUCTION PHASE PARAMETERS BASED PHOTOWIRE KEY
- FIGURE 2.11.1: PAKENHAM FEN MEADOW SITE HISTORIC ENVIRONMENTAL ASSETS

-
- FIGURE 2.17.1: CUMULATIVE (24-HOUR) AUDITORY TTS RANGES DURING INSTALLATION OF MOORING DOLPHINS AT THE ENHANCED PERMANENT BLF ON FLEEING HARBOUR PORPOISE (WITH AND WITHOUT ADDITIONAL MITIGATION)
- FIGURE 2.17.2: COMBINED EFFECT OF CUMULATIVE 24-HR VESSEL ACTIVITY AT THE ENHANCED PERMANENT BLF AND TEMPORARY BLF ON MARINE MAMMALS
- FIGURE 2.17.3: COMBINED EFFECT OF CUMULATIVE 24-HR VESSEL ACTIVITY AT THE ENHANCED PERMANENT BLF AND TEMPORARY BLF ON FISH RECEPTORS
- FIGURE 2.18.1: MARINE HISTORIC ENVIRONMENT STUDY AREA WITH PROPOSED BEACH LANDING FACILITY



NOTES

KEY

- Sizewell C Main Development Site Boundary
- Demarcation Line

Main Land Uses

- Main Power Station Platform
- Contractor Compounds
- National Grid Construction Working Area
- Materials Storage Areas
- Borrow Pit Areas
- Accommodation Campus
- Site Entrance Hub
- Water Management Zone
- Relocated facilities construction areas

Site Infrastructure

- Access Road
- Haul Road
- Rail Head
- Rail Route and Corridor

Other Land Uses

- Existing vegetation to be retained (woodland/hedgerows/trees)
- Existing principal woodland areas outside redline boundary
- Proposed construction phase planting
- Buffer zone
- Land to be used for mitigation or compensation

NOT PROTECTIVELY MARKED

COPYRIGHT
Reproduced from Ordnance Survey map with the permission of Ordnance Survey on behalf of the controller of Her Majesty's Stationery Office © Crown Copyright (2021). All Rights reserved. NNB GenCo 0100060408.



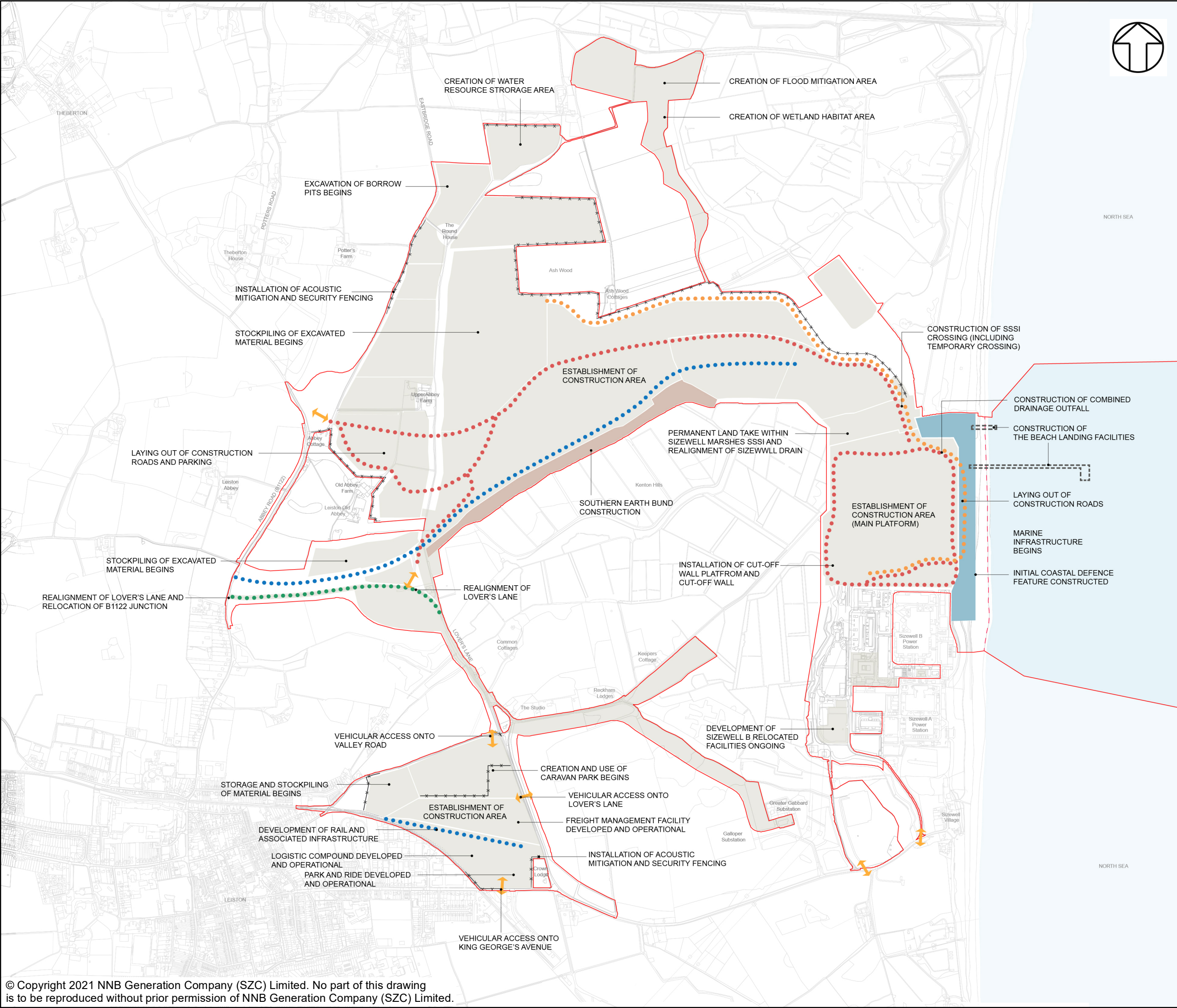
DOCUMENT:
ENVIRONMENTAL STATEMENT ADDENDUM
VOLUME 2
CHAPTER 2
MAIN DEVELOPMENT SITE

DRAWING TITLE:
CONSTRUCTION MASTERPLAN

DRAWING NO:
FIGURE 2.2.33

DATE: JAN 2021	DRAWN: LDA	SCALE : NTS	REVISION: 1.0
-------------------	---------------	----------------	------------------

SCALE BAR
NTS



NOTES

General site clearance works will take place across the main development site as necessary during Phase 1

KEY

Security fencing will be installed where necessary during Phase 1 to secure the perimeter of the site

- Sizewell C Main Development Site Boundary
- Demarcation Line
- Area of Main Construction Activity
- Approximate Location of Site Access Roads
- Approximate Location of Site Haul Roads
- Approximate Location of Rail Route
- Lover's Lane Realignment
- Approximate Location of Acoustic Fence / Bund
- Site Access
- Hard Coastal Defence Feature
- Approximate Location of Southern Bund
- Approximate location of BLF

NOT PROTECTIVELY MARKED

COPYRIGHT

Reproduced from Ordnance Survey map with the permission of Ordnance Survey on behalf of the controller of Her Majesty's Stationery Office © Crown Copyright (2021). All Rights reserved. NNB GenCo 0100060408.



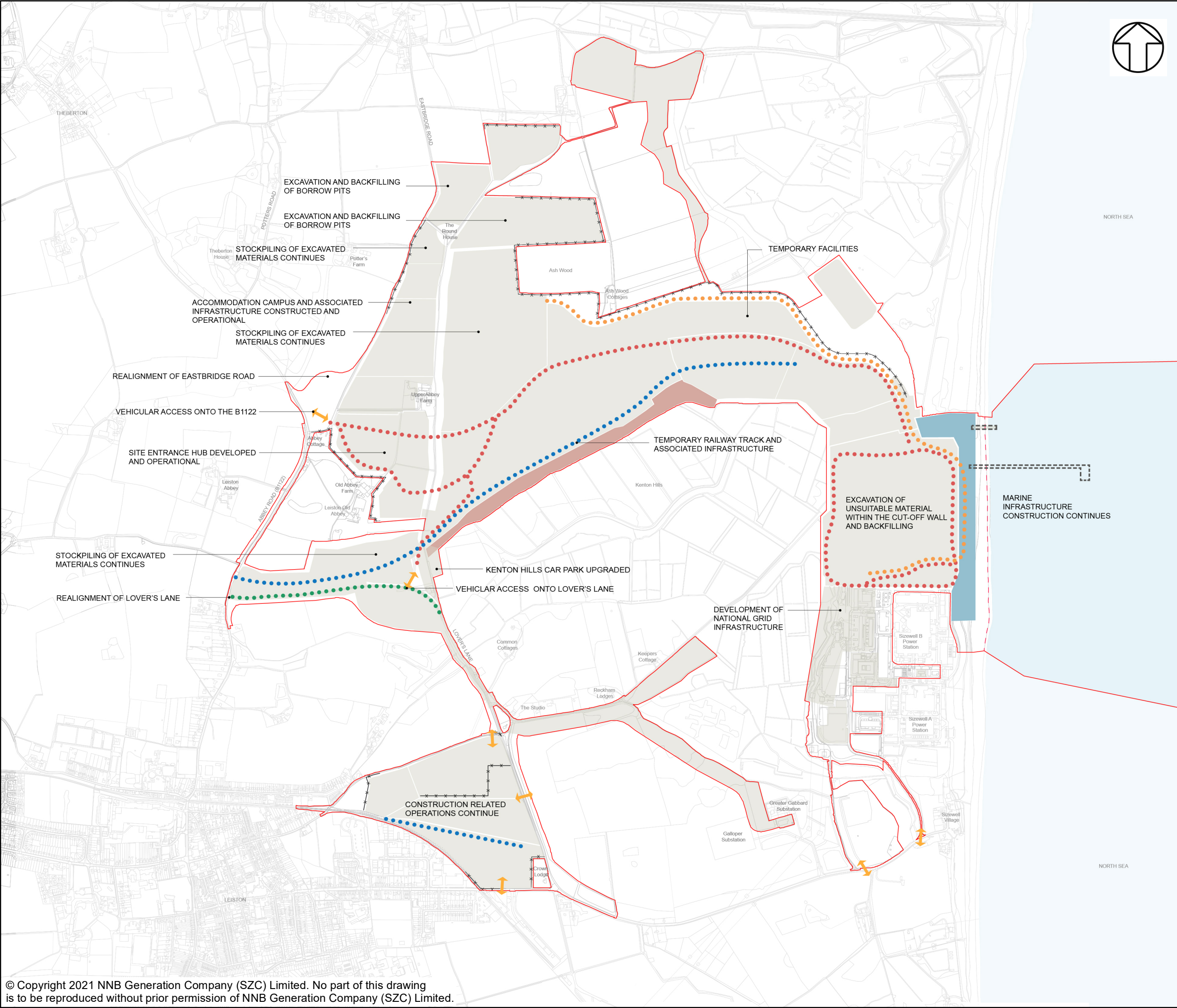
DOCUMENT:
ENVIRONMENTAL STATEMENT ADDENDUM
VOLUME 2
CHAPTER 2
MAIN DEVELOPMENT SITE

DRAWING TITLE:
CONSTRUCTION PHASE 1

DRAWING NO:
FIGURE 2.2.34

DATE:	DRAWN:	SCALE :	REVISION:
JAN 2021	LDA	NTS	1.0

SCALE BAR
NTS



NOTES

General site clearance works will take place across the main development site as necessary during Phase 1

KEY

Security fencing will be installed where necessary during Phase 1 to secure the perimeter of the site

- Sizewell C Main Development Site Boundary
- Demarcation Line
- Area of Main Construction Activity
- Approximate Location of Site Access Roads
- Approximate Location of Site Haul Roads
- Approximate Location of Rail Route
- Lover's Lane Realignment
- Approximate Location of Acoustic Fence / Bund
- Site Access
- Hard Coastal Defence Feature
- Approximate Location of Southern Bund
- Approximate location of BLF

NOT PROTECTIVELY MARKED

COPYRIGHT
Reproduced from Ordnance Survey map with the permission of Ordnance Survey on behalf of the controller of Her Majesty's Stationery Office © Crown Copyright (2021). All Rights reserved. NNB GenCo 0100060408.



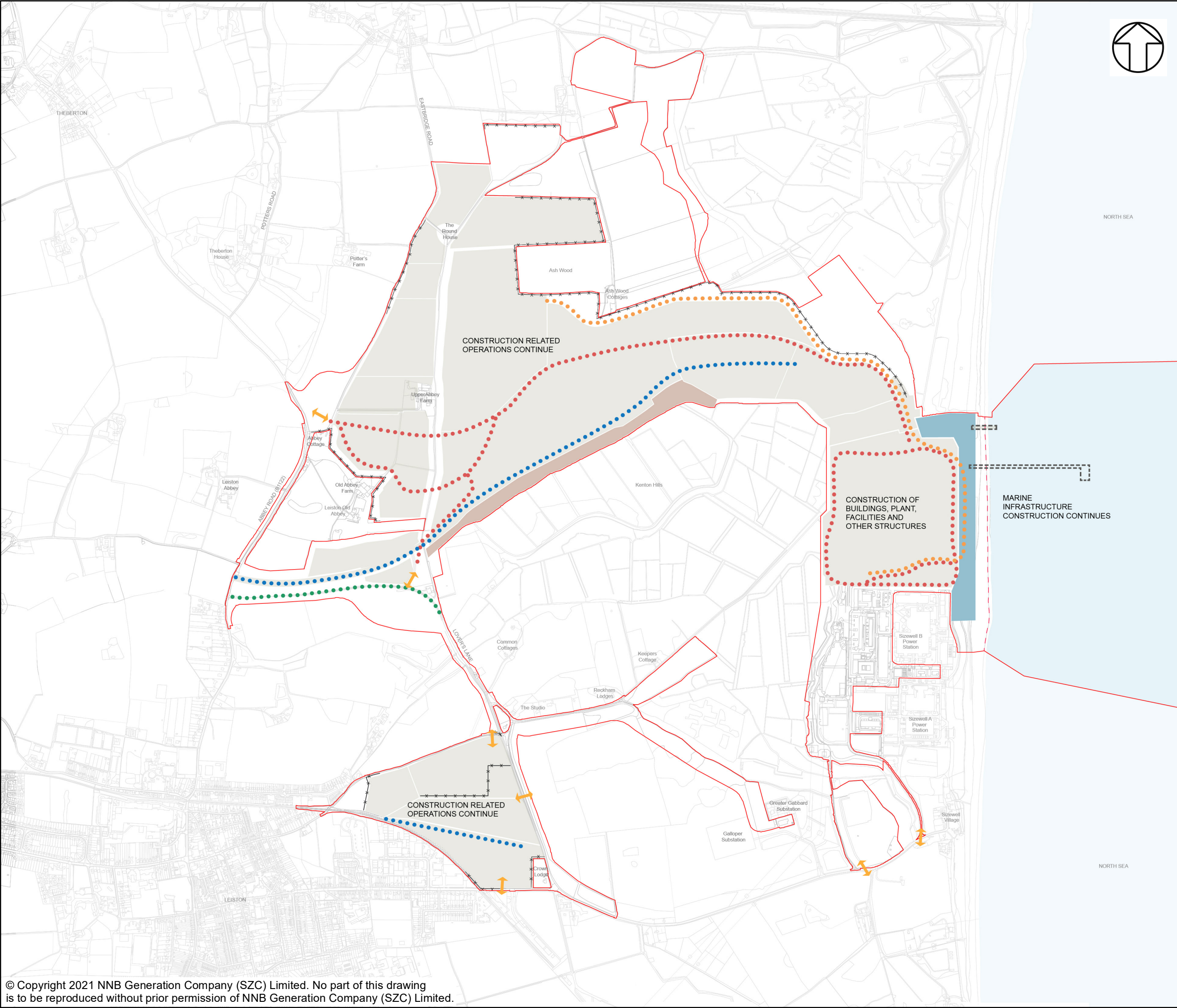
DOCUMENT:
ENVIRONMENTAL STATEMENT ADDENDUM
VOLUME 2
CHAPTER 2
MAIN DEVELOPMENT SITE

DRAWING TITLE:
CONSTRUCTION PHASE 2

DRAWING NO:
FIGURE 2.2.35

DATE: JAN 2021 DRAWN: LDA SCALE: NTS REVISION: 1.0

SCALE BAR
NTS



NOTES

General site clearance works will take place across the main development site as necessary during Phase 1

KEY

Security fencing will be installed where necessary during Phase 1 to secure the perimeter of the site

- Sizewell C Main Development Site Boundary
- Demarcation Line
- Area of Main Construction Activity
- Approximate Location of Site Access Roads
- Approximate Location of Site Haul Roads
- Approximate Location of Rail Route
- Lover's Lane Realignment
- Approximate Location of Acoustic Fence / Bund
- Site Access
- Hard Coastal Defence Feature
- Approximate Location of Southern Bund
- Approximate location of BLF

NOT PROTECTIVELY MARKED

COPYRIGHT
Reproduced from Ordnance Survey map with the permission of Ordnance Survey on behalf of the controller of Her Majesty's Stationery Office © Crown Copyright (2021). All Rights reserved. NNB GenCo 0100060408.



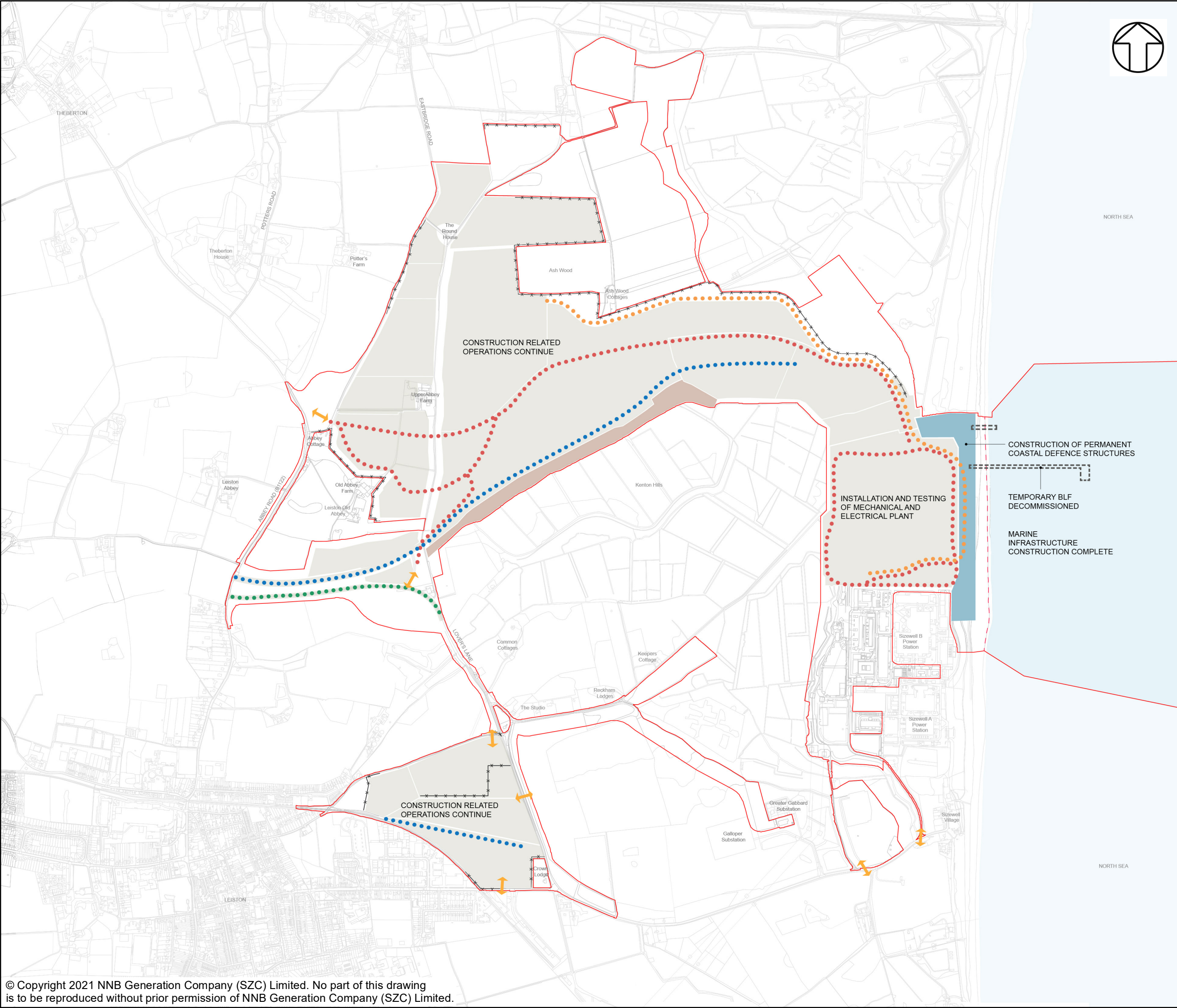
DOCUMENT:
ENVIRONMENTAL STATEMENT ADDENDUM
VOLUME 2
CHAPTER 2
MAIN DEVELOPMENT SITE

DRAWING TITLE:
CONSTRUCTION PHASE 3

DRAWING NO:
FIGURE 2.2.36

DATE:	DRAWN:	SCALE :	REVISION:
JAN 2021	LDA	NTS	1.0

SCALE BAR
NTS



NOTES

General site clearance works will take place across the main development site as necessary during Phase 1

KEY

Security fencing will be installed where necessary during Phase 1 to secure the perimeter of the site

- Sizewell C Main Development Site Boundary
- Demarcation Line
- Area of Main Construction Activity
- Approximate Location of Site Access Roads
- Approximate Location of Site Haul Roads
- Approximate Location of Rail Route
- Lover's Lane Realignment
- Approximate Location of Acoustic Fence / Bund
- Site Access
- Hard Coastal Defence Feature
- Approximate Location of Southern Bund
- Approximate location of BLF

NOT PROTECTIVELY MARKED

COPYRIGHT
Reproduced from Ordnance Survey map with the permission of Ordnance Survey on behalf of the controller of Her Majesty's Stationery Office © Crown Copyright (2021). All Rights reserved. NNB GenCo 0100060408.



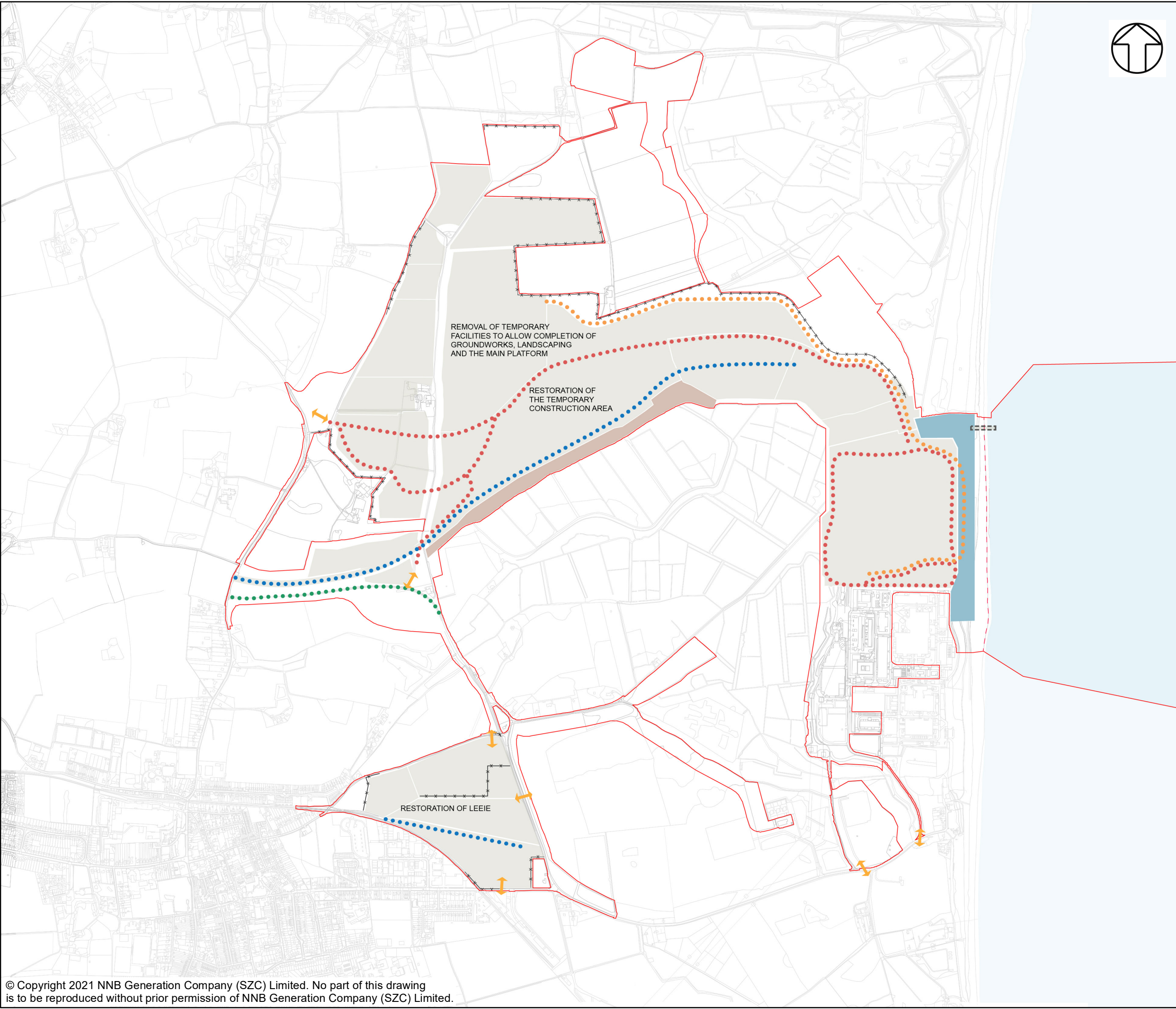
DOCUMENT:
ENVIRONMENTAL STATEMENT ADDENDUM
VOLUME 2
CHAPTER 2
MAIN DEVELOPMENT SITE

DRAWING TITLE:
CONSTRUCTION PHASE 4

DRAWING NO:
FIGURE 2.2.37

DATE:	DRAWN:	SCALE :	REVISION:
JAN 2021	LDA	NTS	1.0

SCALE BAR
NTS



NOTES

General site clearance works will take place across the main development site as necessary during Phase 1

KEY

Security fencing will be installed where necessary during Phase 1 to secure the perimeter of the site

- Sizewell C Main Development Site Boundary
- Demarcation Line
- Area of Main Construction Activity
- Approximate Location of Site Access Roads
- Approximate Location of Site Haul Roads
- Approximate Location of Rail Route
- Lover's Lane Realignment
- Approximate Location of Acoustic Fence / Bund
- Site Access
- Hard Coastal Defence Feature
- Approximate Location of Southern Bund

NOT PROTECTIVELY MARKED

COPYRIGHT
Reproduced from Ordnance Survey map with the permission of Ordnance Survey on behalf of the controller of Her Majesty's Stationery Office © Crown Copyright (2021). All Rights reserved. NNB GenCo 0100060408.



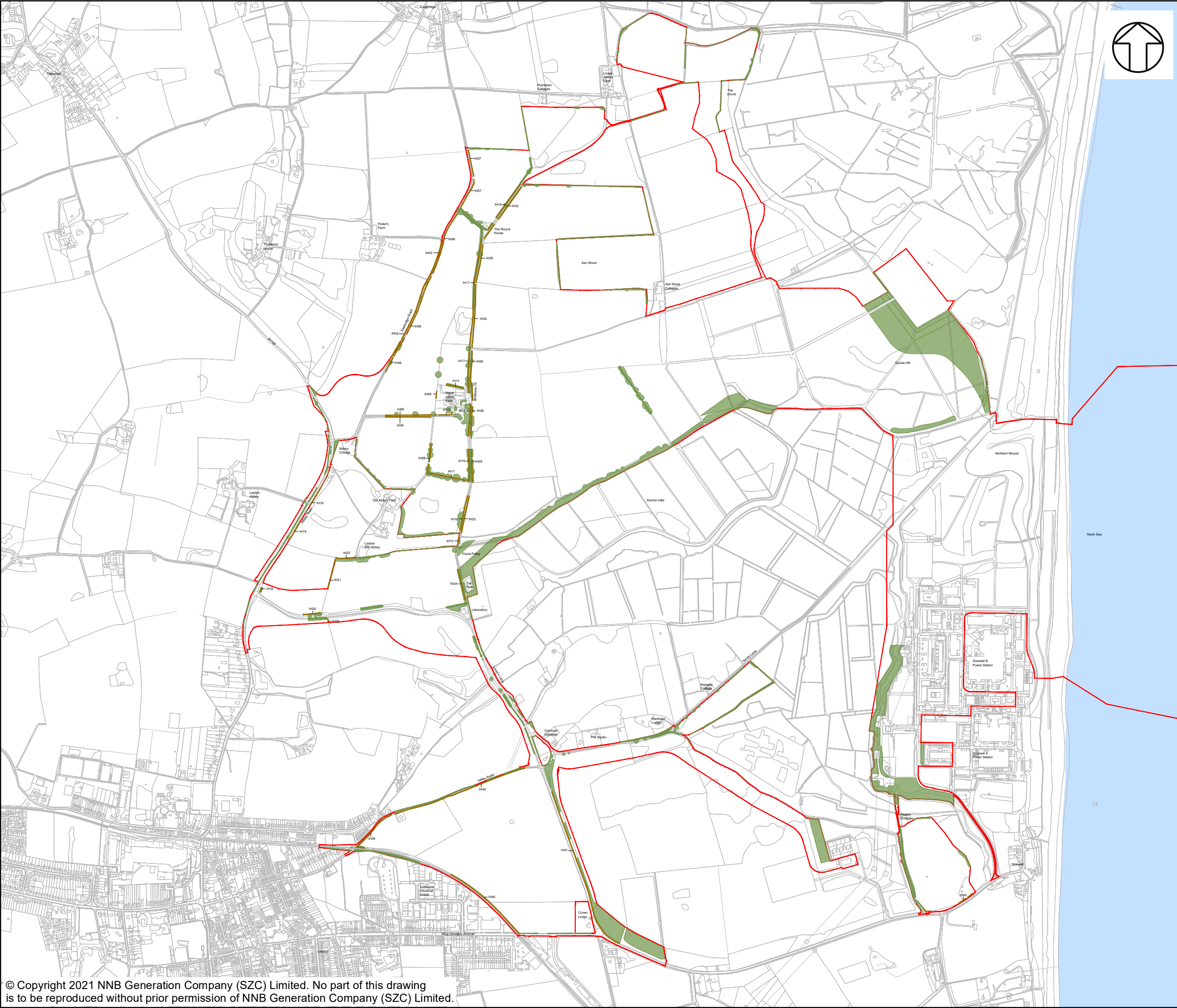
DOCUMENT:
ENVIRONMENTAL STATEMENT ADDENDUM
VOLUME 2
CHAPTER 2
MAIN DEVELOPMENT SITE

DRAWING TITLE:
CONSTRUCTION PHASE 5

DRAWING NO:
FIGURE 2.2.38





DATE:	DRAWN:	SCALE :	REVISION:
JAN 2021	LDA	NTS	1.0

SCALE BAR
NTS



NOTES

KEY

-  Sizewell C Main Development Site Boundary
-  Important hedgerow including hedgerow trees (Hedgerows Regulations 1997) to be retained
-  Other hedgerow including hedgerow trees to be retained
-  Mixed woodland / trees to be retained

NOT PROTECTIVELY MARKED

COPYRIGHT
Reproduced from Ordnance Survey map with the permission of Ordnance Survey on behalf of the controller of Her Majesty's Stationery Office © Crown Copyright (2021). All Rights reserved. NNB GenCo 0100060408.



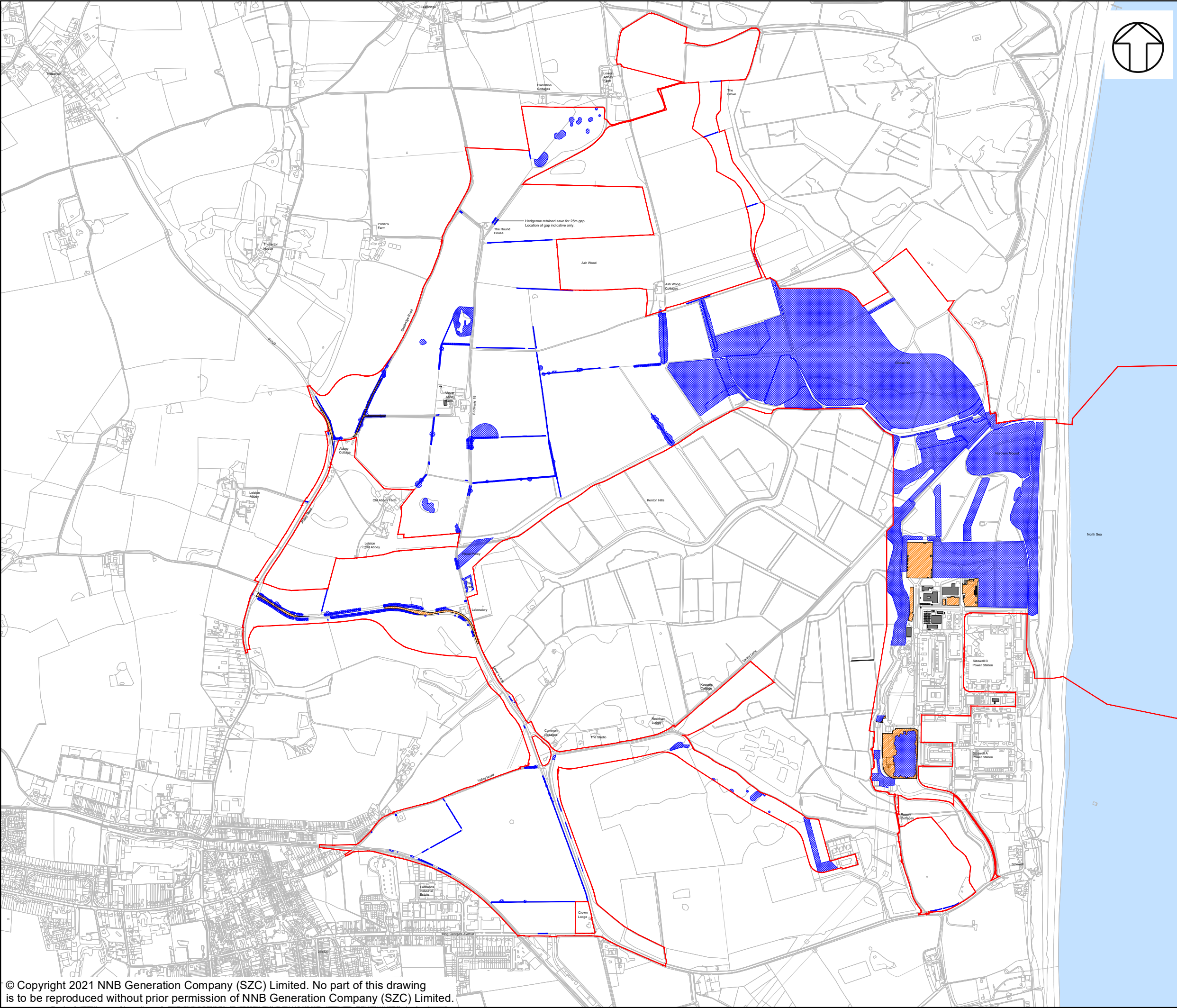
DOCUMENT:
ENVIRONMENTAL STATEMENT ADDENDUM
VOLUME 2
CHAPTER 2
MAIN DEVELOPMENT SITE

DRAWING TITLE:
LANDSCAPE RETENTION PLAN

DRAWING NO:
FIGURE 2.2.39

DATE:	DRAWN:	SCALE :	REVISION:
JAN 2021	LDA	NTS	1.0

SCALE BAR
NTS



NOTES

KEY

- Sizewell C Main Development Site Boundary
- Hedgerow including hedgerow trees to be removed
- Mixed woodland / trees to be removed
- Buildings to be demolished
- Road / surface to be broken out / removed

NOT PROTECTIVELY MARKED

COPYRIGHT
Reproduced from Ordnance Survey map with the permission of Ordnance Survey on behalf of the controller of Her Majesty's Stationery Office © Crown Copyright (2021). All Rights reserved. NNB GenCo 0100060408.



DOCUMENT:
ENVIRONMENTAL STATEMENT ADDENDUM
VOLUME 2
CHAPTER 2
MAIN DEVELOPMENT SITE

DRAWING TITLE:
SITE CLEARANCE PLAN

DRAWING NO:
FIGURE 2.2.40

DATE:	DRAWN:	SCALE :	REVISION:
JAN 2021	LDA	NTS	1.0

SCALE BAR
NTS



NOTES

KEY

- Sizewell C Main Development Site Boundary
- Demarcation Line
- Hedgerows
- Mixed Woodland/Trees
- Dry Sandlings Grassland
- Semi-Improved Grassland
- Arable Land
- Amenity Landscape
- Marsh, Fen and Reedbed
- Vegetated Dunes and Shingle Beach

NOT PROTECTIVELY MARKED

COPYRIGHT
Reproduced from Ordnance Survey map with the permission of Ordnance Survey on behalf of the controller of Her Majesty's Stationery Office © Crown Copyright (2021). All Rights reserved. NNB GenCo 0100060408.



DOCUMENT:
ENVIRONMENTAL STATEMENT ADDENDUM
VOLUME 2
CHAPTER 2
MAIN DEVELOPMENT SITE

DRAWING TITLE:
LANDSCAPE MASTERPLAN (OPERATIONAL)

DRAWING NO:
FIGURE 2.2.41

DATE:	DRAWN:	SCALE :	REVISION:
JAN 2021	LDA	NTS	1.0

SCALE BAR
NTS