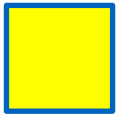




SCOTTISHPOWER  
RENEWABLES



# East Anglia ONE North Offshore Windfarm

## Applicants' Responses to Examining Authority's Written Questions

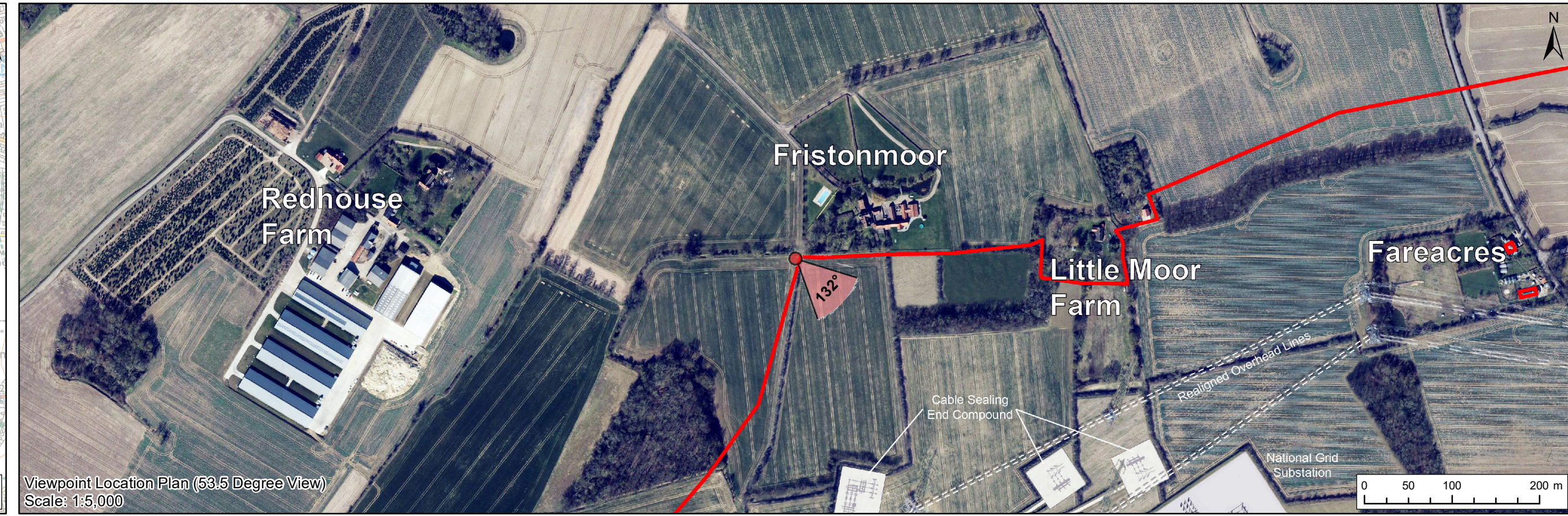
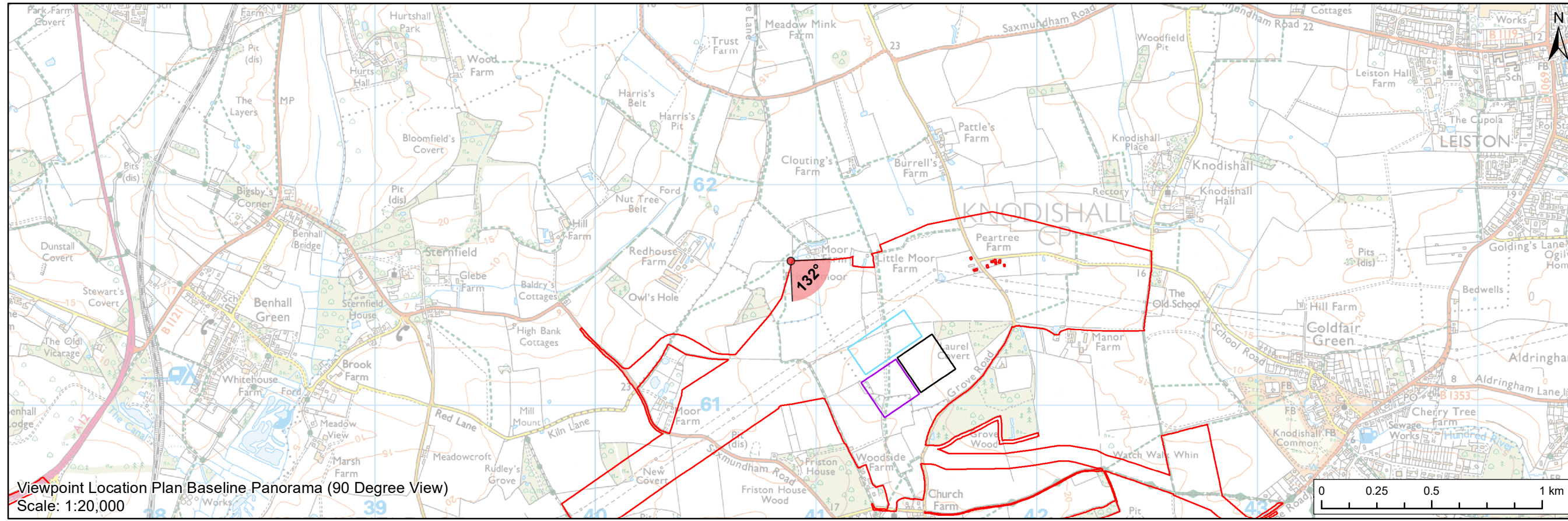
### Appendix 9.4 EA1N Annotated Viewpoint 5

Applicants: East Anglia ONE North Limited  
Document Reference: ExA.WQ-1.A9.D1.V1  
SPR Reference: EA1N\_EA2-DWF-ENV-REP-IBR-001085\_009

Date: 2<sup>nd</sup> November 2020  
Revision: Version 01  
Author: Royal HaskoningDHV

Applicable to **East Anglia ONE North**





**Legend**

- Proposed Onshore Development Area
- Indicative East Anglia ONE North Substation Location
- Indicative East Anglia TWO Substation Location
- Indicative National Grid AIS Substation Location

**Viewpoint:**

- ▲ 90 Degree Field of View Viewpoint
- ▼ 53.5 Degree Field of View Viewpoint



Baseline Photograph (90 Degree Field of View)



Rev	Date	By	Comment	Approved:
2	29/08/2019	LA	Second Issue (OPEN)	Prepared: LA
1	02/08/2019	LA	First Issue (OPEN)	Checked: SM

Scale @ A3
------------

**East Anglia ONE North with National Grid AIS Substation**  
Viewpoint 5: Public Right of Way, near Moor Farm

<b>Drg No</b>	EA1N-DWF-ENV-REP-IBR-000366
<b>Rev</b>	2
<b>Date</b>	29/08/19
<b>Figure</b>	29.17a

Coordinate System: BNG Datum: OSGB36





**Visual representation of 1st year of operational phase**  
 Photomontage of the proposed East Anglia ONE North and National Grid AIS Substation

View flat at a comfortable arm's length

<b>OS reference:</b>	640884 E 261654 N	<b>Horizontal field of view:</b>	53.5° (planar projection)	<b>Camera:</b>	Canon EOS 5D Mark II
<b>Eye level:</b>	25 m AOD	<b>Principal viewing distance:</b>	812.5 mm	<b>Lens:</b>	50mm (Canon EF 50mm f/1.4)
<b>Direction of view:</b>	132°	<b>Paper size:</b>	841 x 297 mm (half A1)	<b>Camera height:</b>	1.5 m AGL
		<b>Correct printed image size:</b>	820 x 260 mm	<b>Date and time:</b>	22/02/2019, 13:47:28

Contains Ordnance Survey digital data © Crown copyright. All rights reserved 2019 Licence number 0100031673

**Figure: 29.17b**  
**Viewpoint 5: Public Right of Way, near Moor Farm**





**Visual representation of 15th year of operational phase**  
 Photomontage of the proposed East Anglia ONE North and National Grid AIS Substation

View flat at a comfortable arm's length

<b>OS reference:</b>	640884 E 261654 N	<b>Horizontal field of view:</b>	53.5° (planar projection)	<b>Camera:</b>	Canon EOS 5D Mark II
<b>Eye level:</b>	25 m AOD	<b>Principal viewing distance:</b>	812.5 mm	<b>Lens:</b>	50mm (Canon EF 50mm f/1.4)
<b>Direction of view:</b>	132°	<b>Paper size:</b>	841 x 297 mm (half A1)	<b>Camera height:</b>	1.5 m AGL
		<b>Correct printed image size:</b>	820 x 260 mm	<b>Date and time:</b>	22/02/2019, 13:47:28

Contains Ordnance Survey digital data © Crown copyright, All rights reserved 2019 Licence number 0100031673

**Figure: 29.17c**  
 Viewpoint 5: Public Right of Way, near Moor Farm





**Visual representation of 1st year of operational phase**  
 Photomontage of the proposed East Anglia ONE North, East Anglia TWO and National Grid AIS Substation

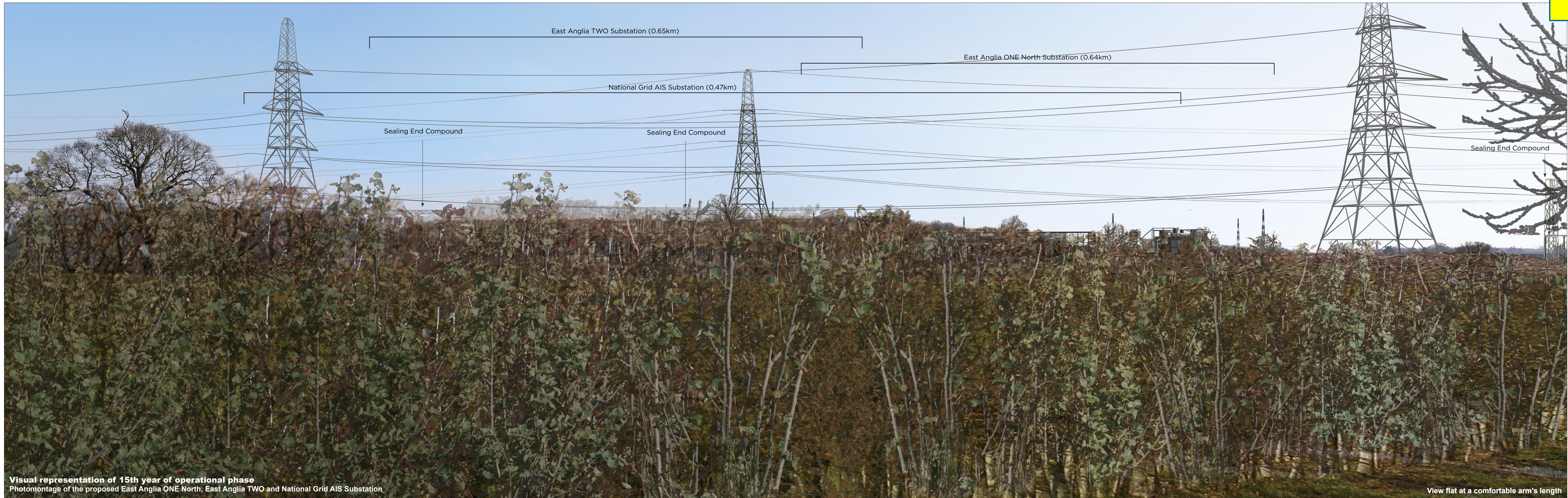
View flat at a comfortable arm's length

<b>OS reference:</b>	640884 E 261654 N	<b>Horizontal field of view:</b>	53.5° (planar projection)	<b>Camera:</b>	Canon EOS 5D Mark II
<b>Eye level:</b>	25 m AOD	<b>Principal viewing distance:</b>	812.5 mm	<b>Lens:</b>	50mm (Canon EF 50mm f/1.4)
<b>Direction of view:</b>	132°	<b>Paper size:</b>	841 x 297 mm (half A1)	<b>Camera height:</b>	1.5 m AGL
		<b>Correct printed image size:</b>	820 x 260 mm	<b>Date and time:</b>	22/02/2019, 13:47:28

Contains Ordnance Survey digital data © Crown copyright. All rights reserved 2019 Licence number 0100031673

**Figure: 29.17d**  
**Viewpoint 5: Public Right of Way, near Moor Farm**





**Visual representation of 15th year of operational phase**  
 Photomontage of the proposed East Anglia ONE North, East Anglia TWO and National Grid AIS Substation

View flat at a comfortable arm's length

<b>OS reference:</b>	640884 E 261654 N	<b>Horizontal field of view:</b>	53.5° (planar projection)	<b>Camera:</b>	Canon EOS 5D Mark II
<b>Eye level:</b>	25 m AOD	<b>Principal viewing distance:</b>	812.5 mm	<b>Lens:</b>	50mm (Canon EF 50mm f/1.4)
<b>Direction of view:</b>	132°	<b>Paper size:</b>	841 x 297 mm (half A1)	<b>Camera height:</b>	1.5 m AGL
		<b>Correct printed image size:</b>	820 x 260 mm	<b>Date and time:</b>	22/02/2019, 13:47:28

Contains Ordnance Survey digital data © Crown copyright, All rights reserved 2019 Licence number 0100031673

**Figure: 29.17e**  
 Viewpoint 5: Public Right of Way, near Moor Farm