



**SCOTTISHPOWER  
RENEWABLES**



# **East Anglia TWO Offshore Windfarm**

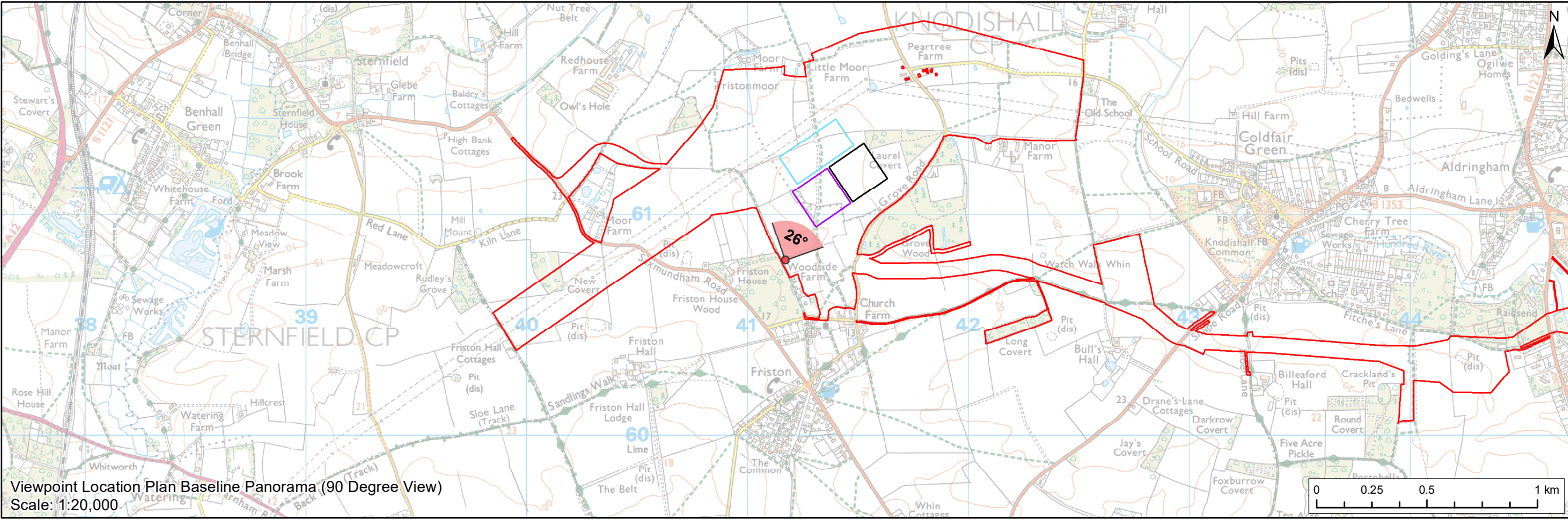
## **Applicants' Responses to Examining Authority's Written Questions**

### **Appendix 9.7 EA2 Annotated Viewpoint 1**

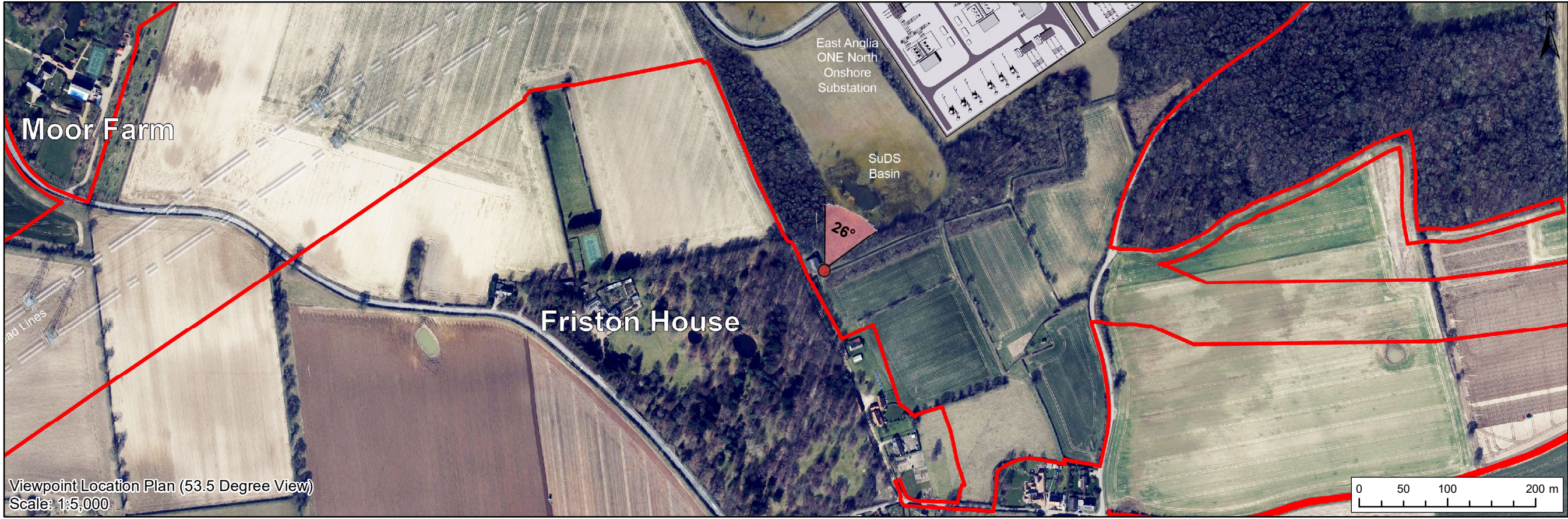
Applicants: East Anglia TWO Limited  
Document Reference: ExA.WQ-1.A9.D1.V1  
SPR Reference: EA1N\_EA2-DWF-ENV-REP-IBR-001085\_009

Date: 2<sup>nd</sup> November 2020  
Revision: Version 01  
Author: Royal HaskoningDHV

**Applicable to East Anglia TWO**



Viewpoint Location Plan Baseline Panorama (90 Degree View)  
Scale: 1:20,000



Viewpoint Location Plan (53.5 Degree View)  
Scale: 1:5,000

**Legend**

- Proposed Onshore Development Area
- Indicative East Anglia TWO Substation Location
- Indicative East Anglia ONE North Substation Location
- Indicative National Grid AIS Substation Location

**Viewpoint:**

- 90 Degree Field of View Viewpoint
- 53.5 Degree Field of View Viewpoint



Baseline Photograph (90 Degree Field of View)

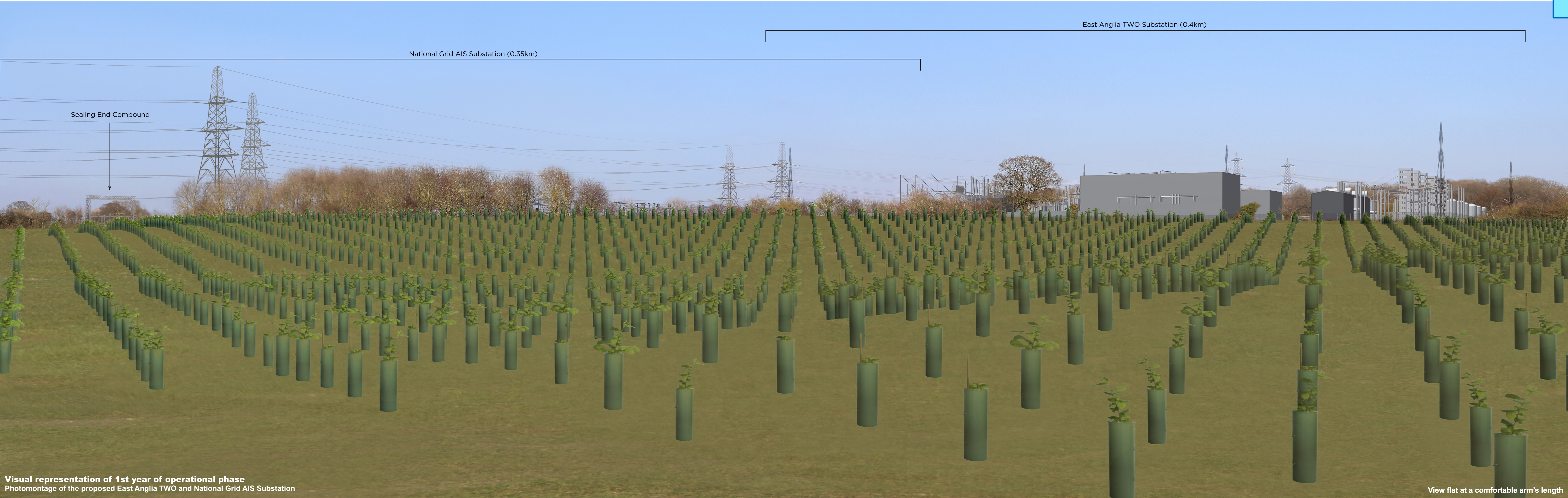


5	29/08/2019	LA	Fifth Issue (OPEN)		
4	15/08/2019	LA	Fourth Issue (OPEN)	Prepared:	LA
3	25/07/2019	LA	Third Issue (OPEN)	Checked:	SM
Rev	Date	By	Comment	Approved:	LT

Source: © Crown copyright and database rights 2019. Ordnance Survey 100031872.  
This map has been produced to the latest known information at the time of issue, and has been produced for your information only.  
Please consult with the SPN Onshore GIS team to ensure the content is not current before using the information contained on this map.  
To the fullest extent permitted by law, we accept no responsibility or liability (whether in contract, tort (including negligence) or otherwise) in respect of any errors or omissions in the information contained in the map and shall not be liable for any loss, damage or expense caused by such errors or omissions.

**East Anglia TWO with  
National Grid AIS Substation**  
Viewpoint 1: Public Right of Way near Friston House

Drg No	EA2-DWF-ENV-REP-IBR-000921	
Rev	5	Coordinate System: BNG
Date	29/08/19	Datum: OSGB36
Figure	29.13a	



**Visual representation of 1st year of operational phase**  
Photomontage of the proposed East Anglia TWO and National Grid AIS Substation

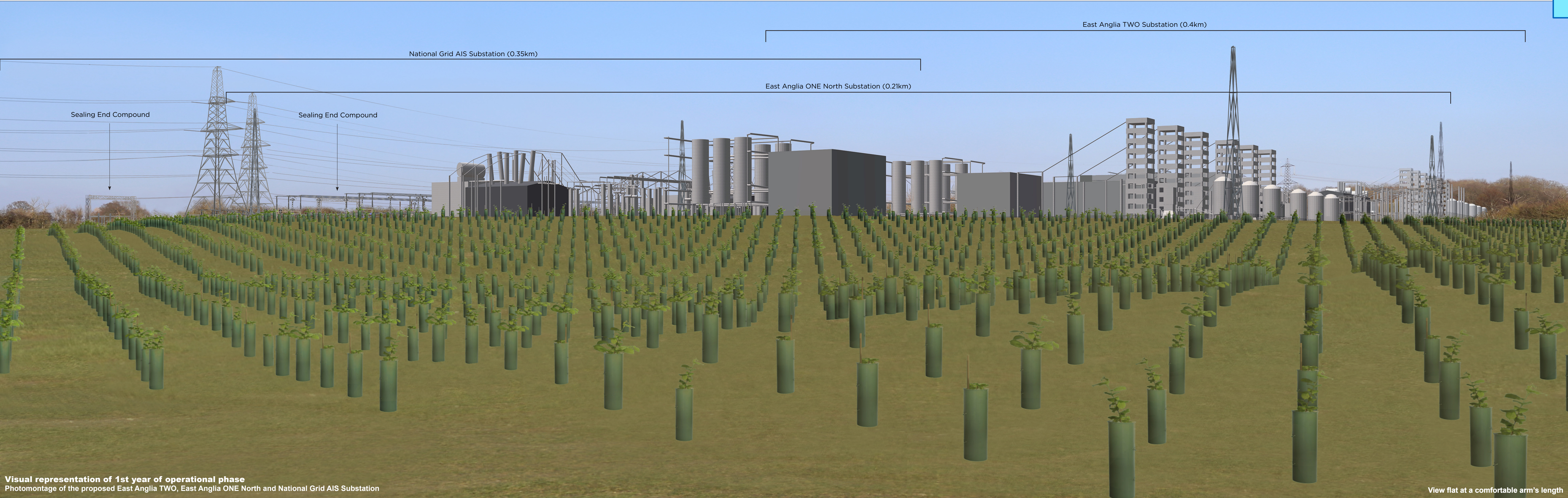


**Visual representation of 15th year of operational phase**  
Photomontage of the proposed East Anglia TWO and National Grid AIS Substation

View flat at a comfortable arm's length

<b>OS reference:</b>	641169 E 260794 N	<b>Horizontal field of view:</b>	53.5° (planar projection)	<b>Camera:</b>	Canon EOS 5D Mark II	<small>Contains Ordnance Survey digital data © Crown copyright, All rights reserved 2019 Licence number 0100031673</small>
<b>Eye level:</b>	14 m AOD	<b>Principal viewing distance:</b>	812.5 mm	<b>Lens:</b>	50mm (Canon EF 50mm f/1.4)	
<b>Direction of view:</b>	26°	<b>Paper size:</b>	841 x 297 mm (half A1)	<b>Camera height:</b>	1.5 m AGL	
		<b>Correct printed image size:</b>	820 x 260 mm	<b>Date and time:</b>	22/02/2019, 14:24:44	

**Figure: 29.13c**  
**Viewpoint 1: Public Right of Way near Friston House**



**Visual representation of 1st year of operational phase**  
Photomontage of the proposed East Anglia TWO, East Anglia ONE North and National Grid AIS Substation



**Visual representation of 15th year of operational phase**  
Photomontage of the proposed East Anglia TWO, East Anglia ONE North and National Grid AIS Substation

View flat at a comfortable arm's length

<b>OS reference:</b>	641169 E 260794 N	<b>Horizontal field of view:</b>	53.5° (planar projection)	<b>Camera:</b>	Canon EOS 5D Mark II	<small>Contains Ordnance Survey digital data © Crown copyright, All rights reserved 2019 Licence number 0100031673</small>
<b>Eye level:</b>	14 m AOD	<b>Principal viewing distance:</b>	812.5 mm	<b>Lens:</b>	50mm (Canon EF 50mm f/1.4)	
<b>Direction of view:</b>	26°	<b>Paper size:</b>	841 x 297 mm (half A1)	<b>Camera height:</b>	1.5 m AGL	
		<b>Correct printed image size:</b>	820 x 260 mm	<b>Date and time:</b>	22/02/2019, 14:24:44	

**Figure: 29.13e**  
**Viewpoint 1: Public Right of Way near Friston House**