

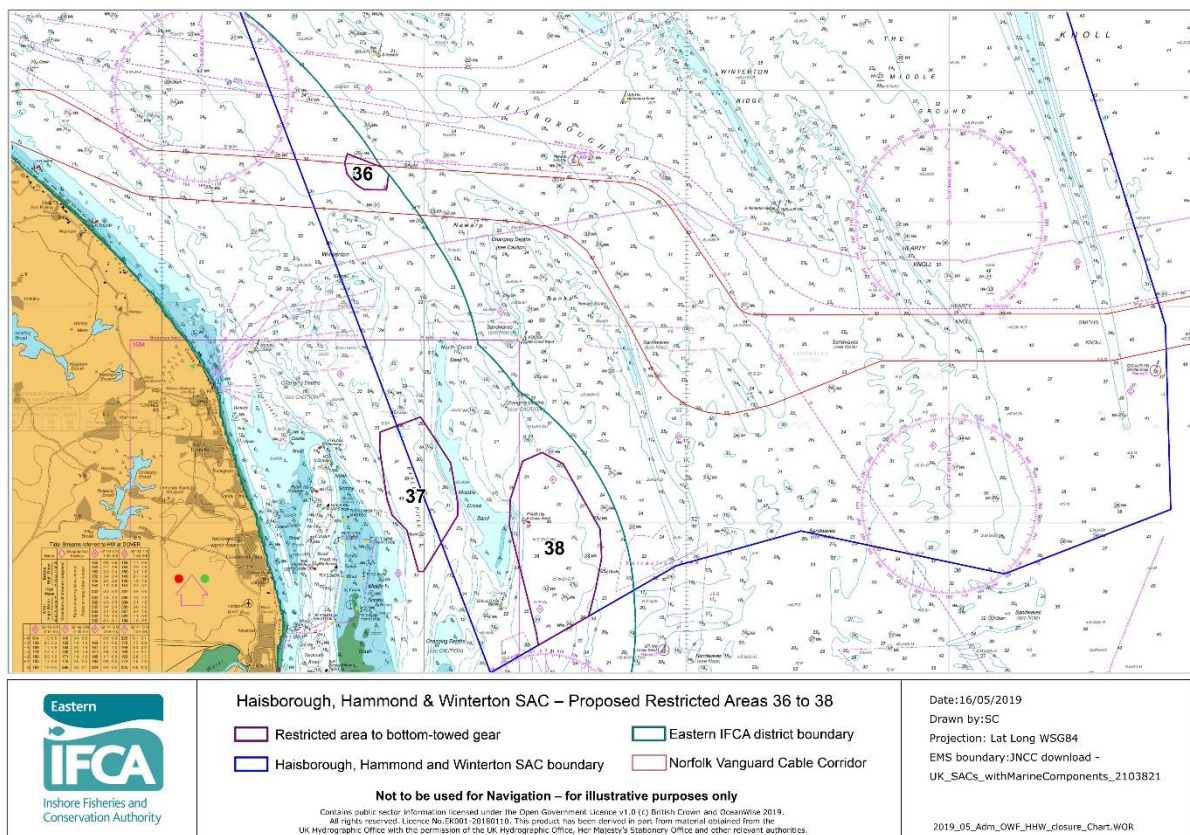
# Application by Norfolk Vanguard Limited for an Order Granting Development Consent for the Norfolk Vanguard Offshore Wind Farm Project



## Additional submission by the Eastern Inshore Fisheries and Conservation Authority

17<sup>th</sup> May 2019

This submission is provided as an additional document to support Eastern IFCA's Deadline 7 submission, as the proposed fisheries restrictions outlined for Deadline 7 have subsequently been formally approved by the Authority.



**Figure 1.** Proposed closures agreed by the Eastern Inshore Fisheries and Conservation Authority on the 15<sup>th</sup> May 2019.

On 15<sup>th</sup> May 2019, the Eastern Inshore Fisheries and Conservation Authority approved the proposed spatial restrictions to bottom-towed gear to protect Annex 1 Biogenic Reef: *Sabellaria spinulosa*. These restrictions include Restricted Area 36 (Figure 1) of the draft Marine Protected Areas Byelaw 2019, which lies within the Norfolk Vanguard cable corridor.

In order to develop the restrictions, Eastern IFCA reviewed Natural England's modelled data, acoustic data and ground truthing data as well as Eastern IFCA habitat mapping data. These results were used in conjunction with an assessment of raw

video data supplied by Cefas<sup>1</sup> to confirm the presence of *Sabellaria* reef. Restricted Areas 36, 37 and 38 are areas where both Eastern IFCA and Natural England have high confidence that the feature is present and requires protection.

Although the scope of Eastern IFCA byelaws is restricted to managing sea fisheries resources and protecting marine ecosystems from impacts of fishing, Eastern IFCA is keen to encourage parity by encouraging regulators of non-fishing activities that could damage or disturb sensitive features (including cable laying, remedial works and cable protection) to prevent or at least minimise such activities in areas closed to fishing for the protection of these features wherever this is possible. **Eastern IFCA would therefore request that all possible efforts are made to microsite the cable route within the cable corridor to avoid Restricted Area 36.** The minimum clearance between the southern edge of Restricted Area 36 and the southern edge of the cable corridor is 920 m.

Eastern IFCA will shortly begin formal consultation on the proposed restrictions at which time all relevant stakeholders, including the Applicant, will be invited to comment on the restrictions before the proposed updated Marine Protected Areas Byelaw is sent to the Secretary of State for consent.

---

<sup>1</sup>Centre for Environment, Fisheries and Aquaculture Science