

# **Vattenfall Wind Power Ltd**

## **Thanet Extension Offshore Wind Farm**

Annex C to Appendix 5 to Deadline 8 Submission:  
Accompanying Figure

Relevant Examination Deadline: 8

Submitted by Vattenfall Wind Power Ltd

Date: June 2019

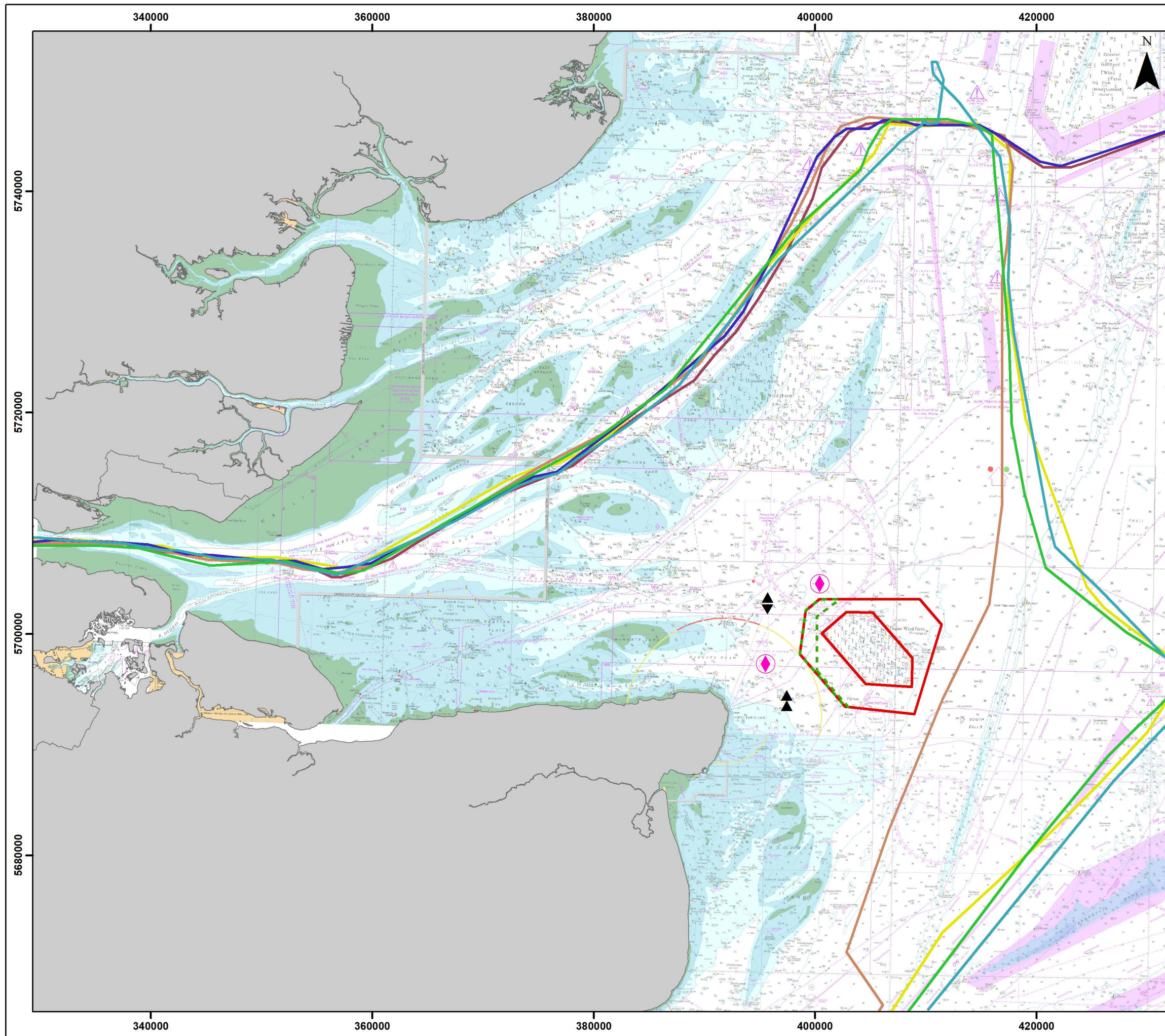
Revision A

Drafted By:	Vattenfall Wind Power Ltd
Approved By:	Daniel Bates
Date of Approval:	June 2019
Revision:	A

Revision A

<p>Copyright © 2019 Vattenfall Wind Power Ltd</p> <p>All pre-existing rights retained</p>
-------------------------------------------------------------------------------------------





**GoBe VATTENFALL**

# THANET EXTENSION OFFSHORE WIND FARM

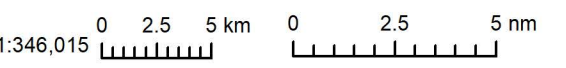
Selected Container Vessel  
Visits to DPWLG  
(26 May - 2 June 2019)

- Legend**
- RLB
  - Structures Exclusion Zone
  - Pilot Station
  - North East Spit Buoy
  - Elbow Buoy
- Vessel\***
- MSC Desiree (26/05/19)
  - AS Paulina (27/05/19)
  - Cartagena Express (31/05/19)
  - Cap San Maleas (31/05/19)
  - MOL Proficiency (01/06/19)
  - MSC Athens (02/06/19)

Datum: ETRS 1989  
Projection: UTM31N

Notes  
\* Approximate location digised from  
Marine Traffic extract  
Charts from MarineFIND.co.uk. (c) Crown  
Copyright, 2019. All rights reserved. License  
No. EK001-FN1001-02494. Not to be used  
for Navigation.

© Vattenfall Wind Power Ltd 2018  
© Crown Copyright, 2016. All rights reserved License  
No. EK001-412013. NOT TO BE USED FOR NAVIGATION



Drg No	18UK1255_MT_Vessel_Tracks		
Rev	0.1	Date	10/06/2019
By	RM	Layout	N/A