



# Awel y Môr Offshore Wind Farm

## Category 6: Environmental Statement

### Volume 6, Annex 10.5: SLVIA Visualisations - Figure 32 (ViewPoint 5 - Red Wharf Bay)

**Date: April 2022**

**Revision: A**

Application Reference: 6.6.10.5.5

Pursuant to: APFP Regulation 5(2)(a)



| REVISION | DATE          | STATUS/<br>REASON<br>FOR ISSUE | AUTHOR: | CHECKED<br>BY: | APPROVED<br>BY: |
|----------|---------------|--------------------------------|---------|----------------|-----------------|
| A        | April<br>2022 | ES                             | OPEN    | SLR/GoBe       | RWE             |
|          |               |                                |         |                |                 |
|          |               |                                |         |                |                 |
|          |               |                                |         |                |                 |

[REDACTED]

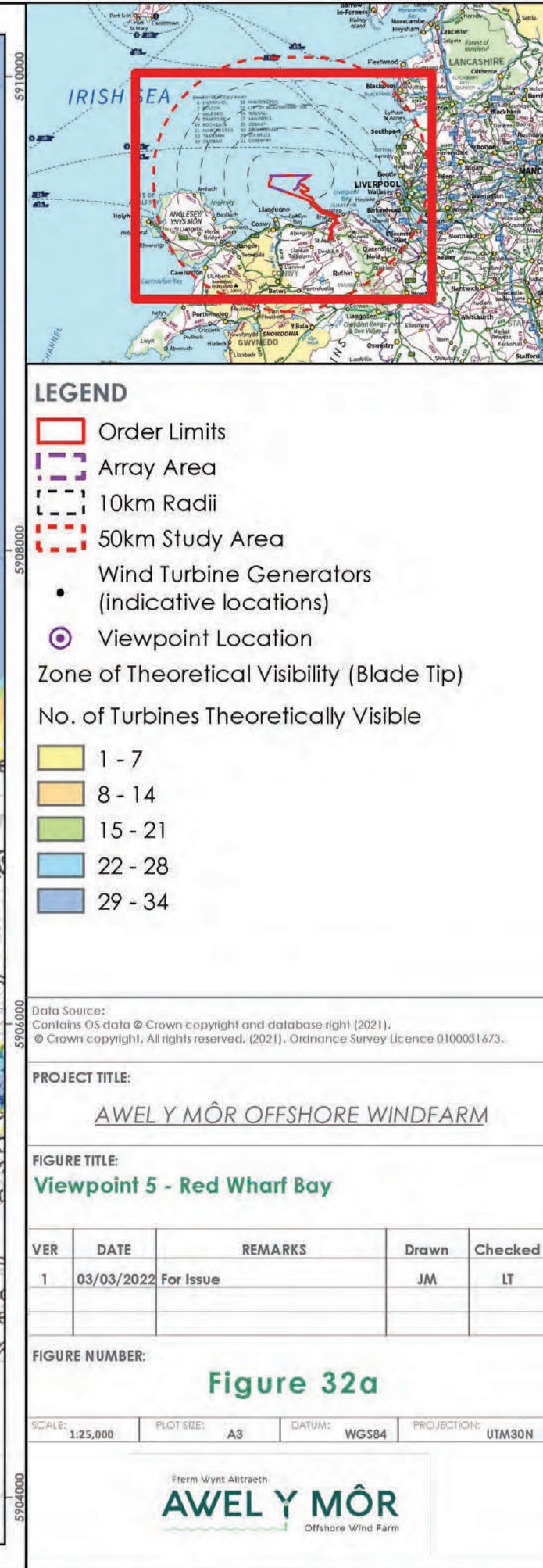
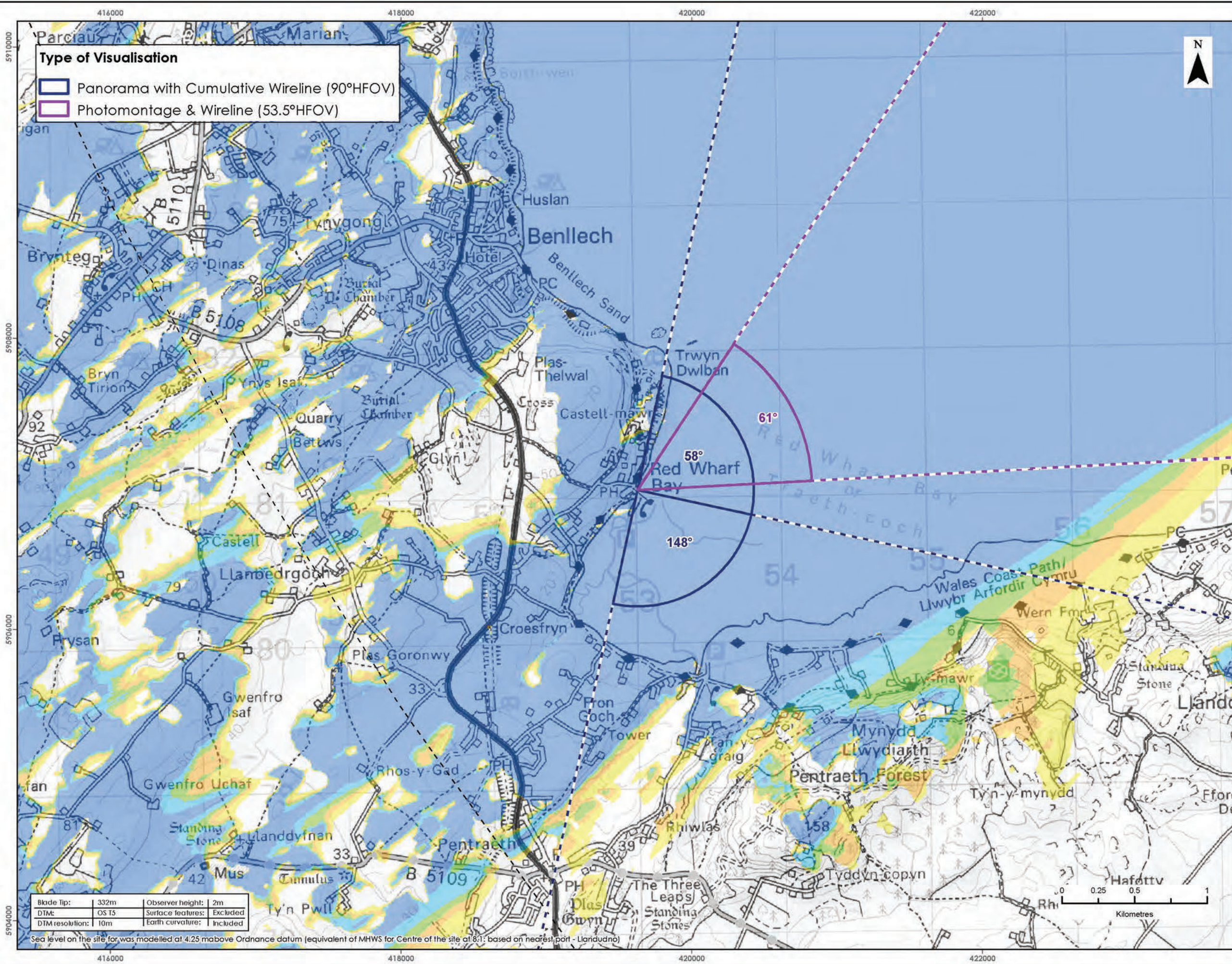
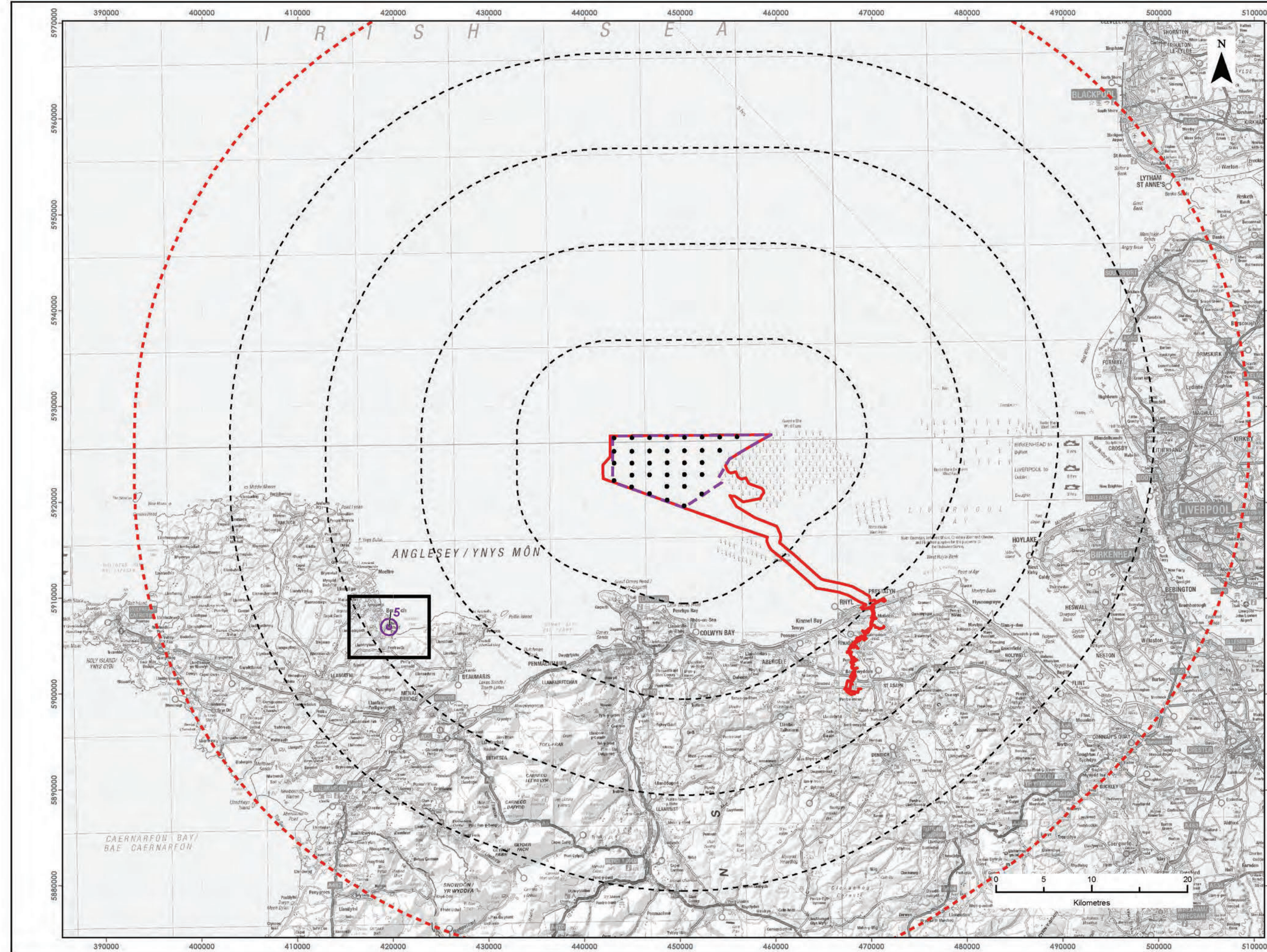
RWE Renewables UK  
Swindon Limited

Windmill Hill Business Park  
Whitehill Way  
Swindon  
Wiltshire SN5 6PB

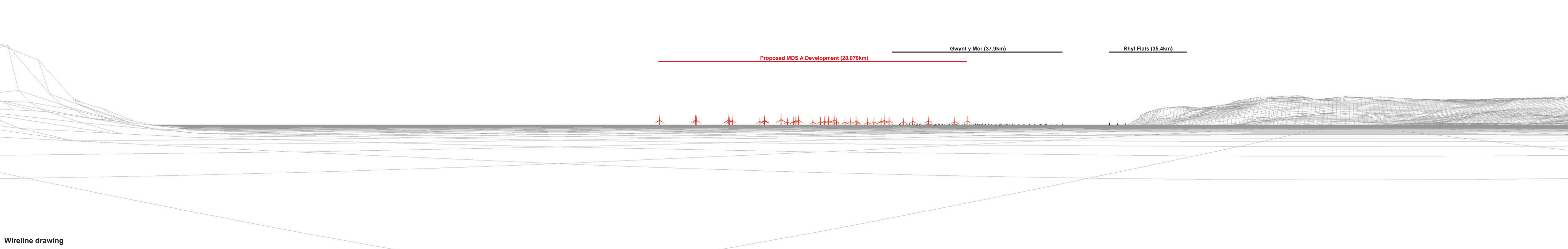
[REDACTED]  
[REDACTED]

Registered office:  
RWE Renewables UK  
Swindon Limited  
Windmill Hill Business Park  
Whitehill Way  
Swindon







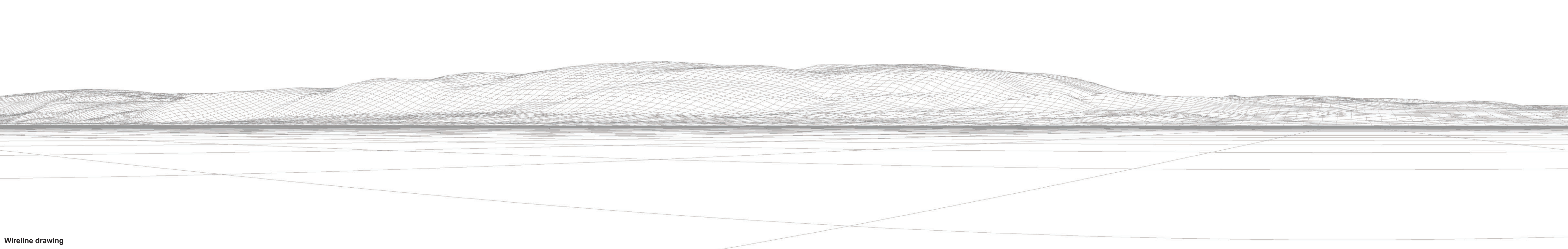






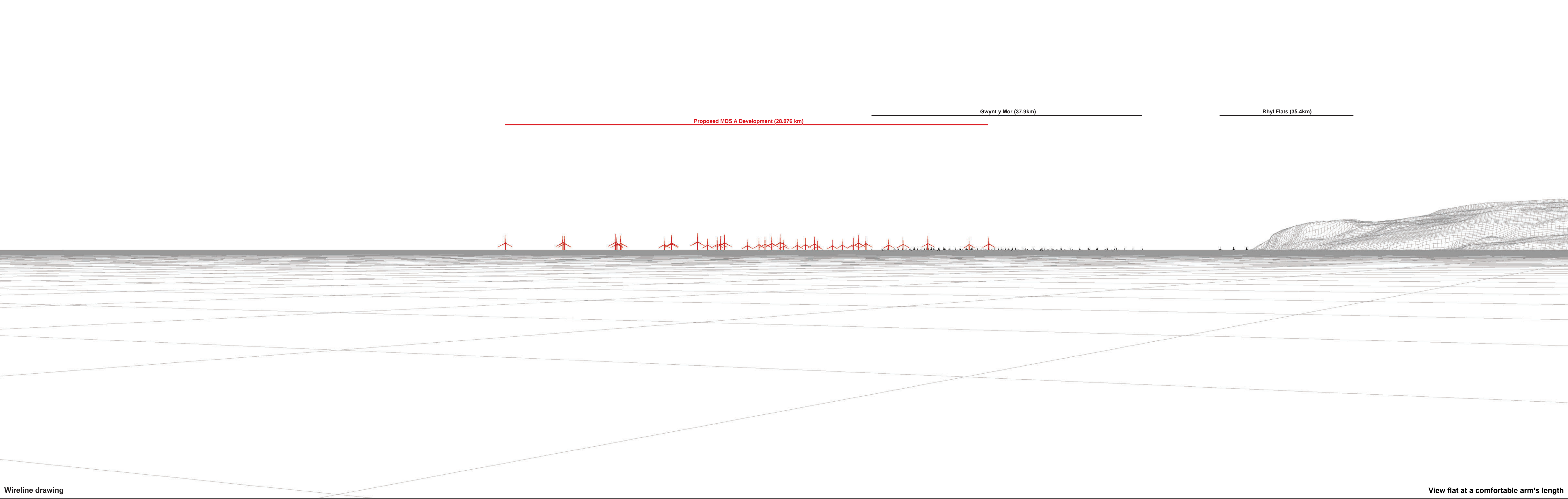
Baseline photograph

This image provides landscape and visual context only



Wireline drawing





Wireline drawing

View flat at a comfortable arm's length





Photomontage: Proposed MDS A Development (operational turbines have been montaged in this view)

View flat at a comfortable arm's length

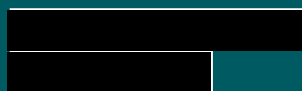
|                    |                   |                             |                           |                |                     |  |
|--------------------|-------------------|-----------------------------|---------------------------|----------------|---------------------|--|
| OS reference:      | 253013 E 381053 N | Horizontal field of view:   | 53.5° (planar projection) | Camera:        | Canon EOS 6D        | Figure: 32e  |
| Eye level:         | 1.5 mAOD          | Principal distance:         | 812.5 mm                  | Lens:          | Canon EF 50mm f/1.4 | Viewpoint 5: Red Wharf Bay   |
| Direction of view: | 61°               | Paper size:                 | 841 x 297 mm (half A1)    | Camera height: | 1.5 m               | Awel y Môr Offshore Wind Farm  |
| Nearest turbine:   | 28.076 km         | Correct printed image size: | 820 x 260 mm              | Date and time: | 24.04.2021 17:02    | © Crown copyright. All rights reserved (2021). Licence number 0100031673 |





RWE Renewables UK  
Swindon Limited

Windmill Hill Business Park  
Whitehill Way  
Swindon  
Wiltshire SN5 6PB



Registered office:  
RWE Renewables UK  
Swindon Limited  
Windmill Hill Business Park  
Whitehill Way  
Swindon