



# **Awel y Môr Offshore Wind Farm**

## **Category 6: Environmental Statement**

**Volume 6, Annex 10.5: SLVIA  
Visualisations - Figure 36  
(ViewPoint 9 - Bangor Pier -  
(Southern End))**

**Date: April 2022**



REVISION	DATE	STATUS/ REASON FOR ISSUE	AUTHOR:	CHECKED BY:	APPROVED BY:
A	April 2022	ES	OPEN	SLR/GoBe	RWE

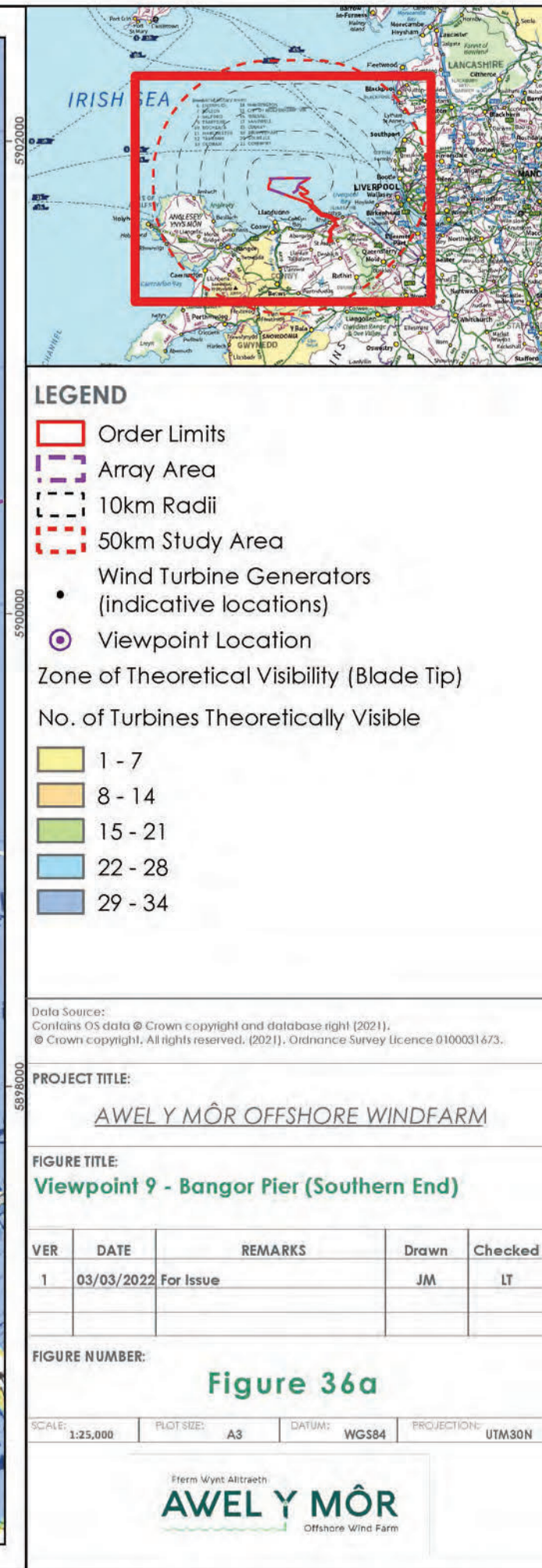
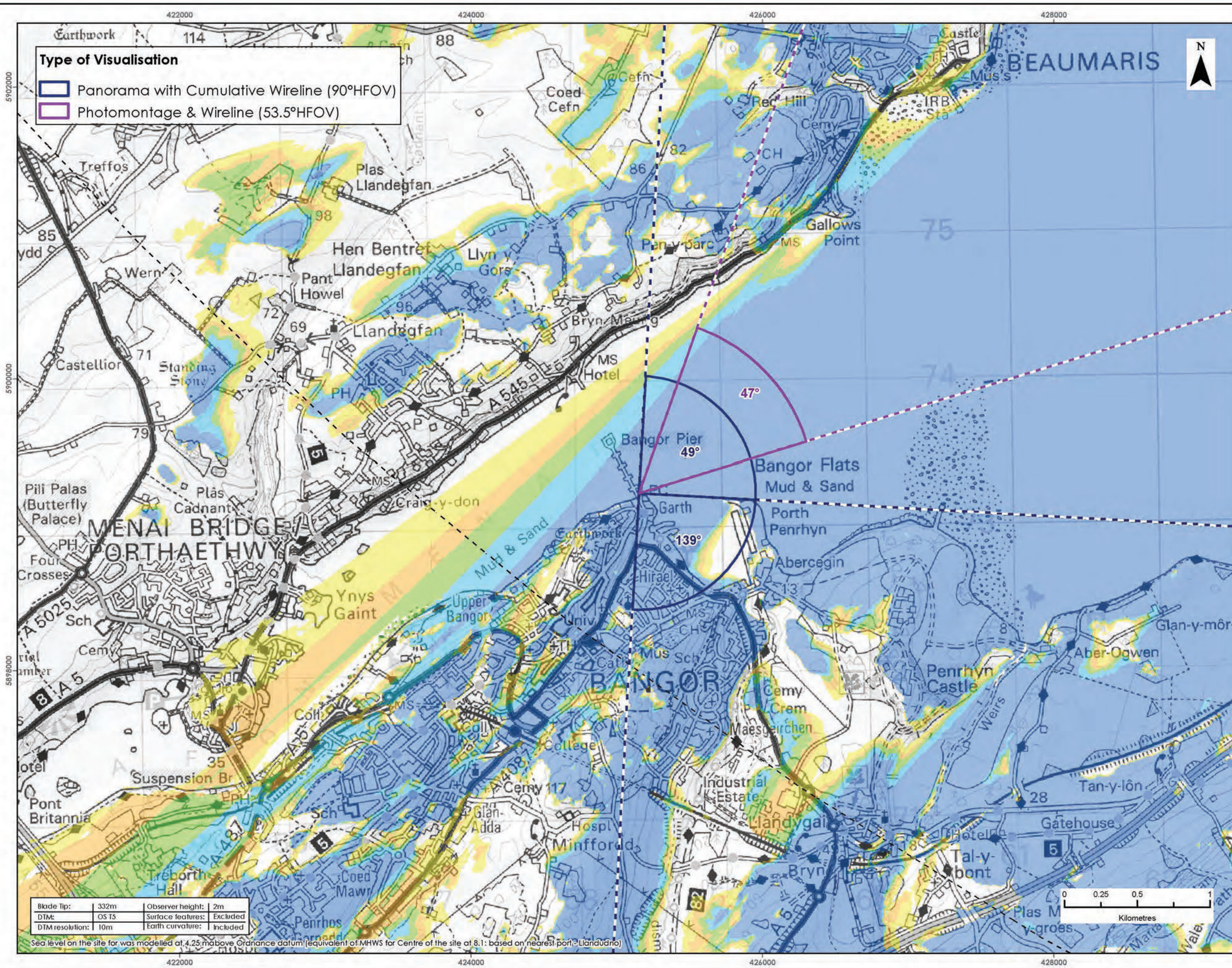
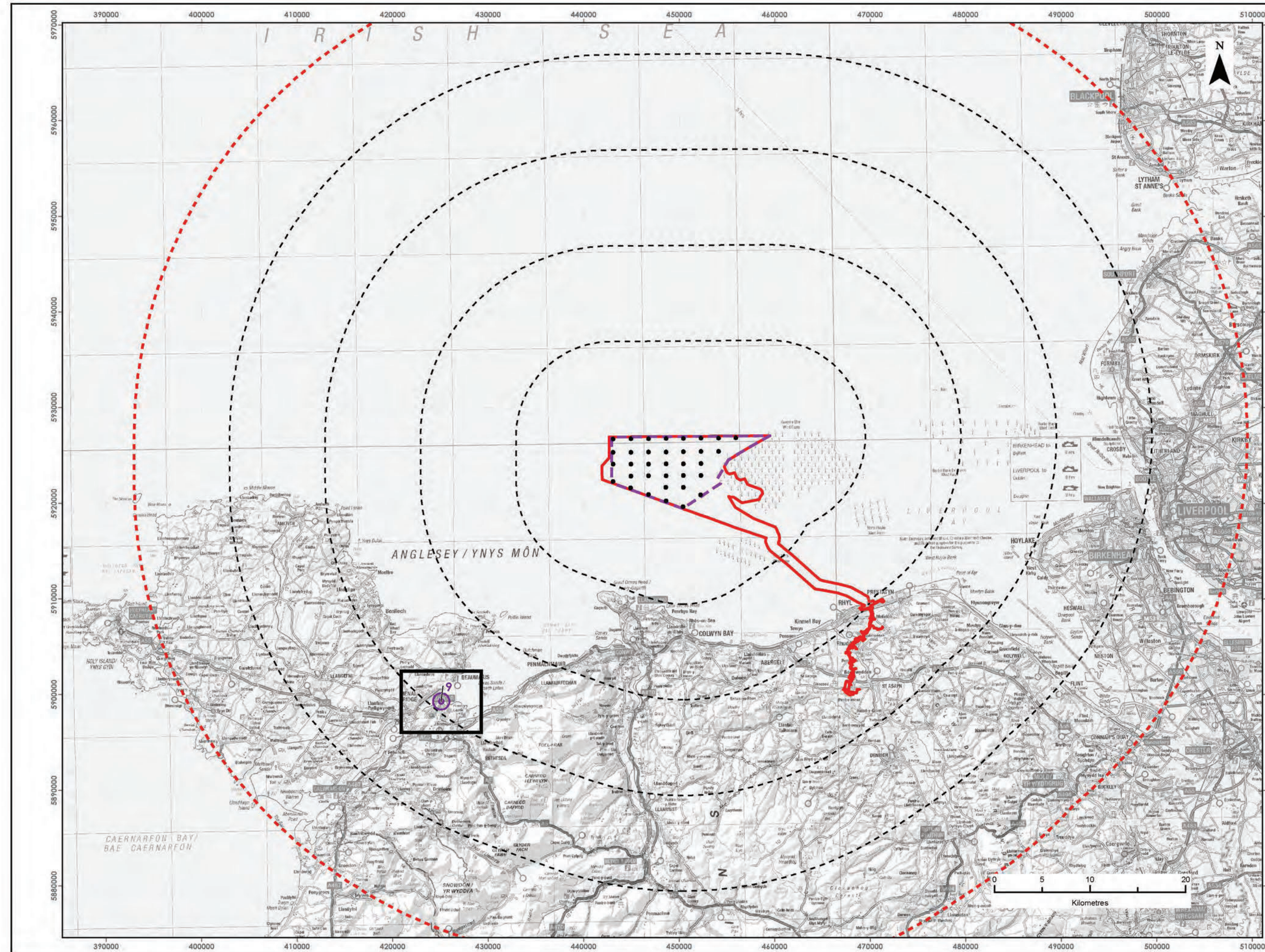
[www.awelymor.cymru](http://www.awelymor.cymru)

RWE Renewables UK  
Swindon Limited

Windmill Hill Business Park  
Whitehill Way  
Swindon  
Wiltshire SN5 6PB  
T +44 (0)8456 720 090  
[REDACTED]

Registered office:  
RWE Renewables UK  
Swindon Limited  
Windmill Hill Business Park  
Whitehill Way  
Swindon



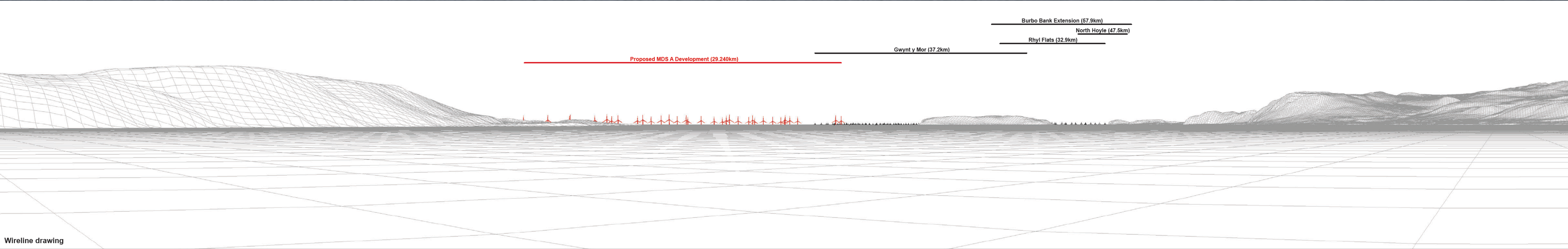






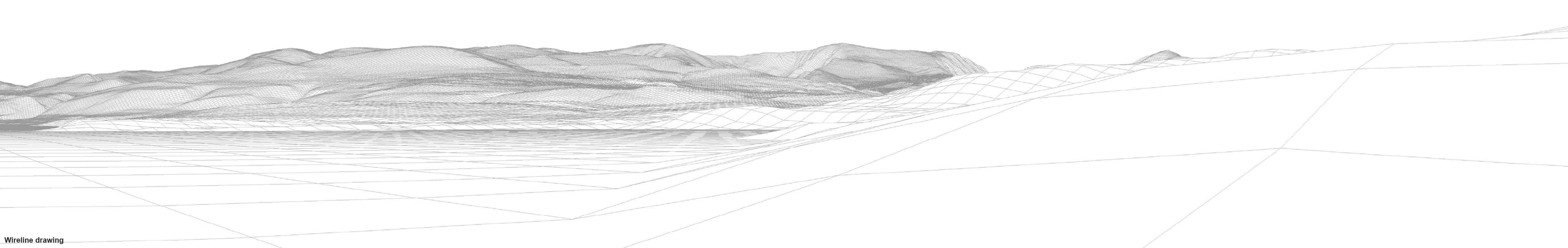
Baseline photograph

This image provides landscape and visual context only

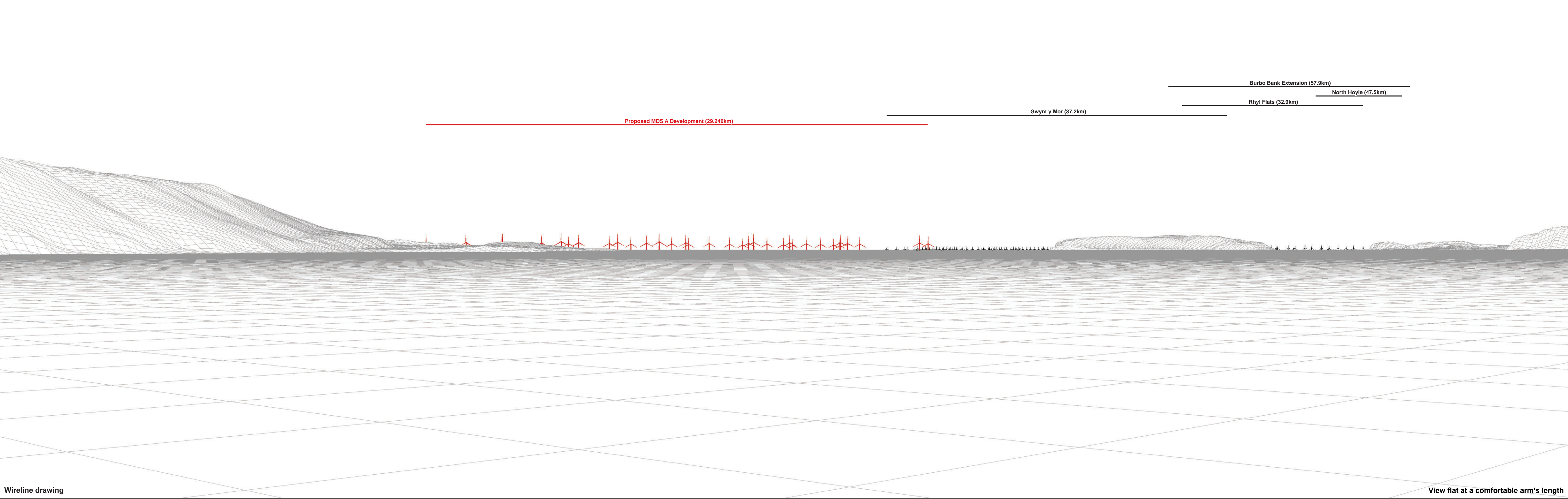


Wireline drawing













Photomontage: Proposed MDS A Development (operational turbines have been montaged in this view)

View flat at a comfortable arm's length

OS reference:	258432 E 373236 N	Horizontal field of view:	53.5° (planar projection)	Camera:	Canon EOS 6D	Figure: 36e
Eye level:	5.7 mAOD	Principal distance:	812.5 mm	Lens:	Canon EF 50mm f/1.4	Viewpoint 9: Bangor Pier (Southern End)
Direction of view:	47°	Paper size:	841 x 297 mm (half A1)	Camera height:	5.5 m	Awel y Môr Offshore Wind Farm
Nearest turbine:	29.240 km	Correct printed image size:	820 x 260 mm	Date and time:	06.11.2020 10:41	© Crown copyright. All rights reserved (2021). Licence number 0100031673





RWE Renewables UK  
Swindon Limited

Windmill Hill Business Park  
Whitehill Way  
Swindon  
Wiltshire SN5 6PB  
T +44 (0)8456 720 090

Registered office:  
RWE Renewables UK  
Swindon Limited  
Windmill Hill Business Park  
Whitehill Way  
Swindon