



Awel y Môr Offshore Wind Farm

Category 6: Environmental Statement

Volume 6, Annex 10.5: SLVIA Visualisations - Figure 51 (ViewPoint 24 - Graig Fawr)

Date: April 2022

Revision: A

Application Reference: 6.6.10.5.24

Pursuant to: APFP Regulation 5(2)(a)



REVISION	DATE	STATUS/ REASON FOR ISSUE	AUTHOR:	CHECKED BY:	APPROVED BY:
A	April 2022	ES	OPEN	SLR/GoBe	RWE

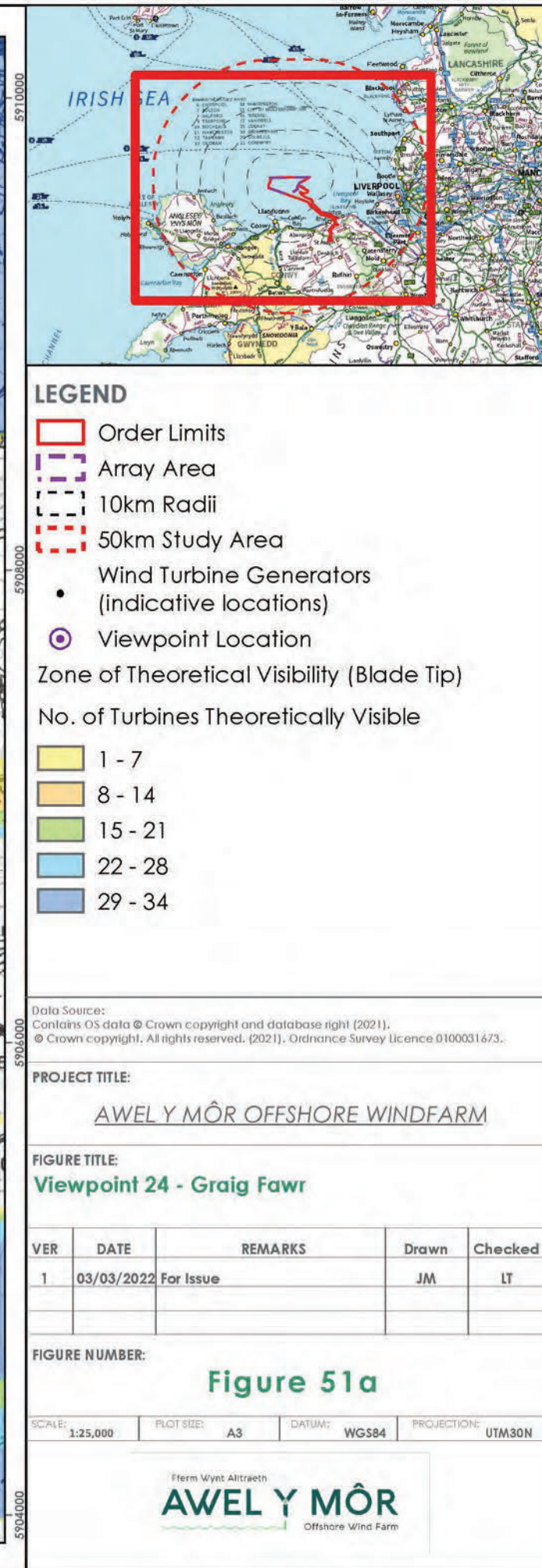
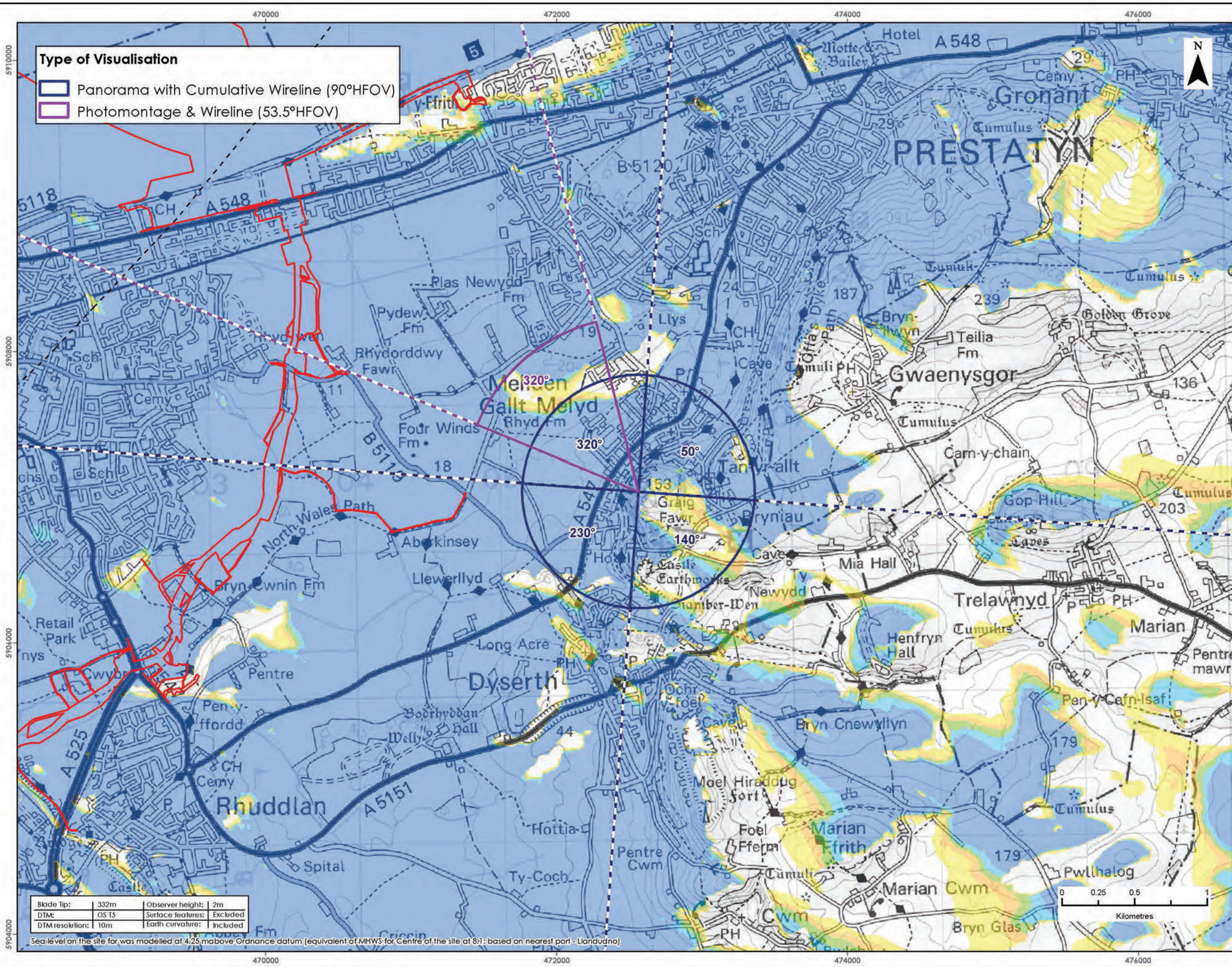
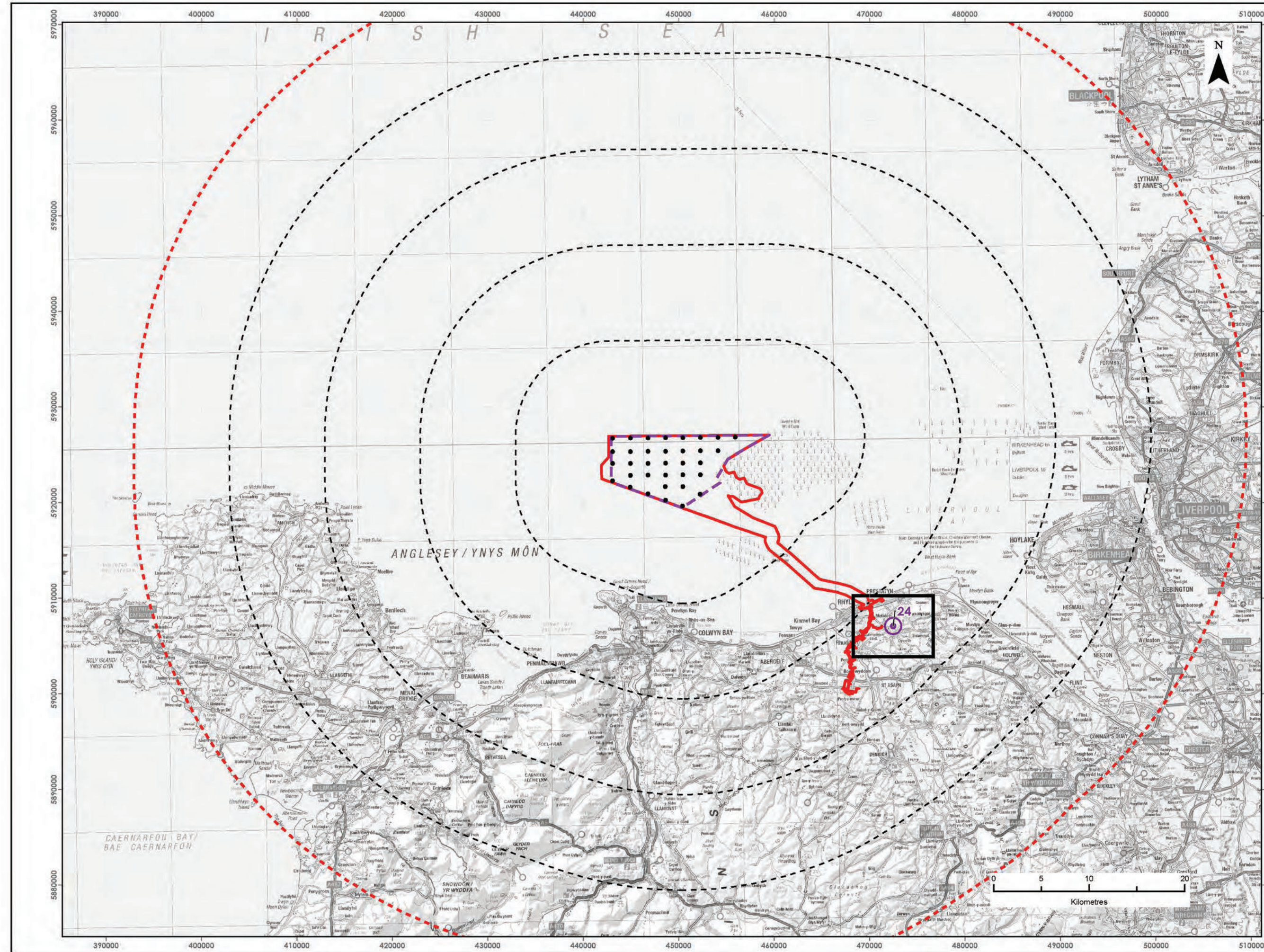
[REDACTED]

RWE Renewables UK
Swindon Limited

Windmill Hill Business Park
Whitehill Way
Swindon
Wiltshire SN5 6PB

[REDACTED]
[REDACTED]

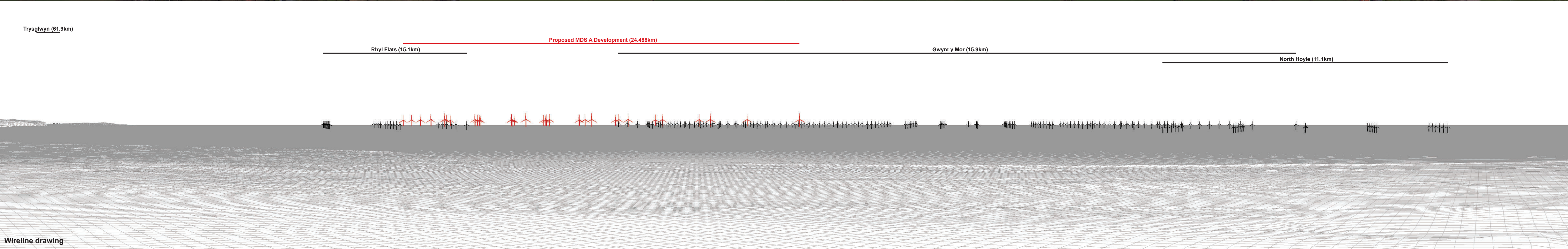
Registered office:
RWE Renewables UK
Swindon Limited
Windmill Hill Business Park
Whitehill Way
Swindon





Baseline photograph

This image provides landscape and visual context only

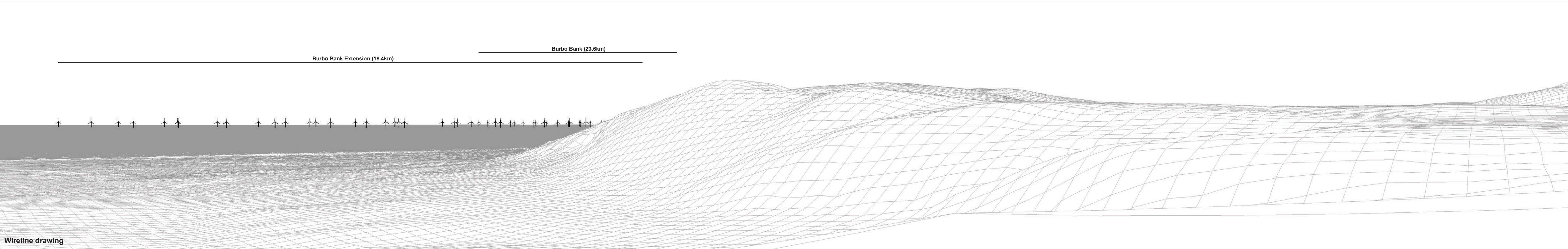


Wireline drawing



Baseline photograph

This image provides landscape and visual context only

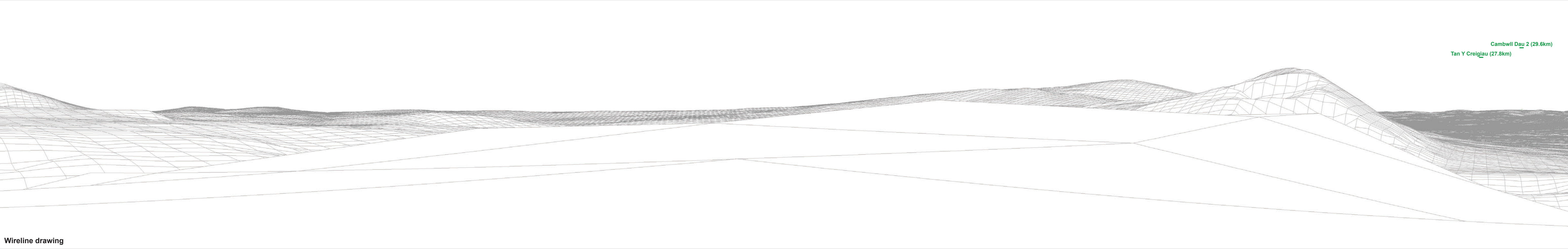


Wireline drawing

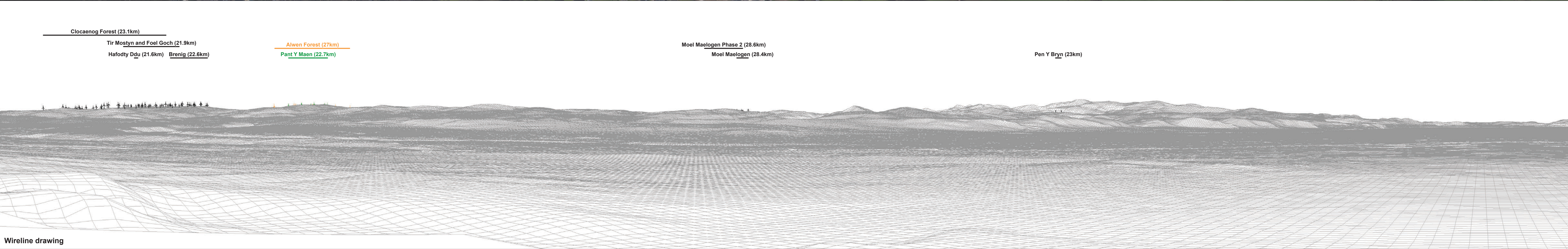


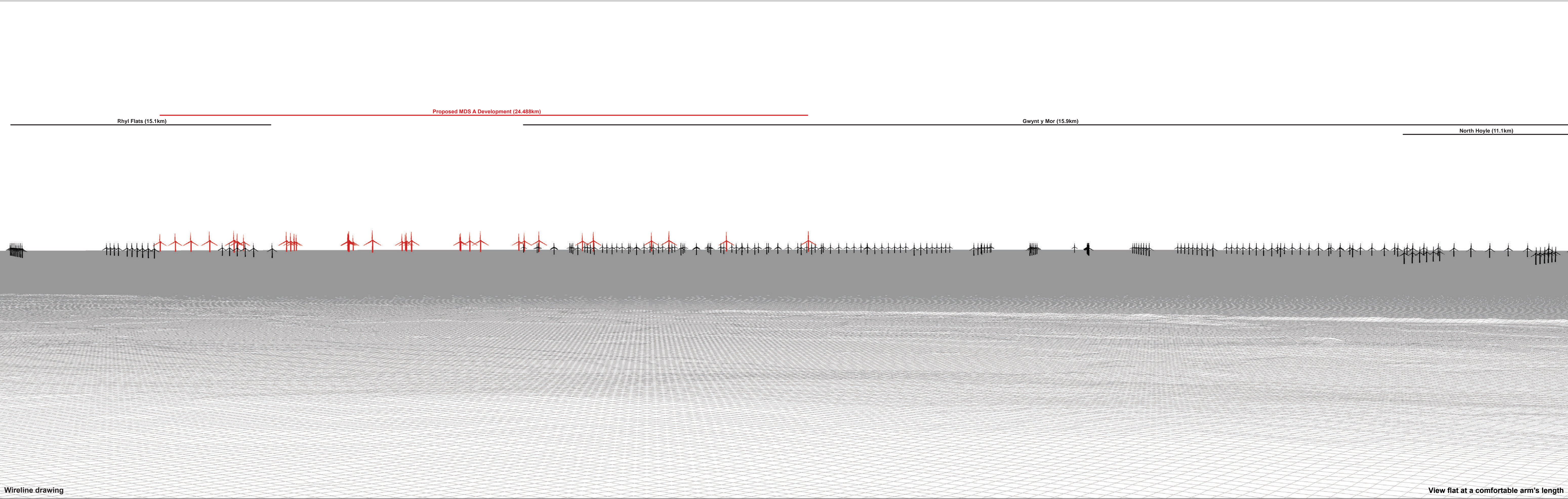
Baseline photograph

This image provides landscape and visual context only

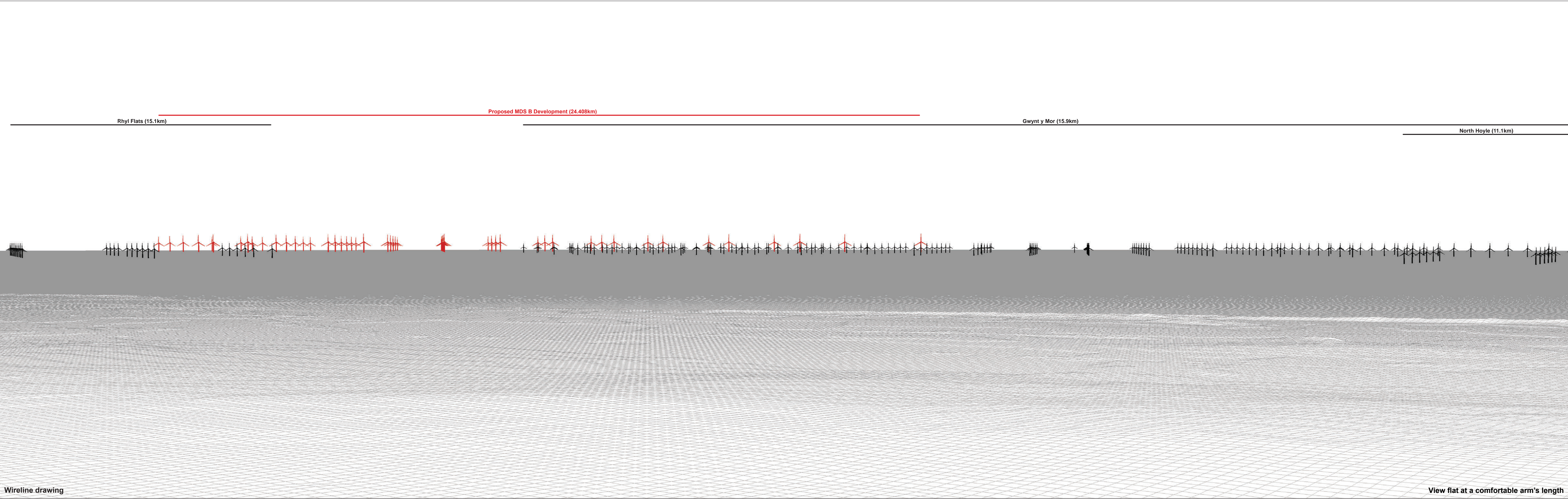


Wireline drawing











Photomontage: Proposed MDS B Development

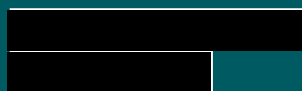
View flat at a comfortable arm's length

OS reference:	305948 E 380393 N	Horizontal field of view:	53.5° (planar projection)	Camera:	Canon EOS 6D	Figure: 51i
Eye level:	152.5 mAOD	Principal distance:	812.5 mm	Lens:	Canon EF 50mm f/1.4	Viewpoint 24: Graig Fawr
Direction of view:	320°	Paper size:	841 x 297 mm (half A1)	Camera height:	1.5 m	Awel y Môr Offshore Wind Farm
Nearest turbine:	24.408 km	Correct printed image size:	820 x 260 mm	Date and time:	30.03.2021 11:25	© Crown copyright. All rights reserved (2021). Licence number 0100031673



RWE Renewables UK
Swindon Limited

Windmill Hill Business Park
Whitehill Way
Swindon
Wiltshire SN5 6PB



Registered office:
RWE Renewables UK
Swindon Limited
Windmill Hill Business Park
Whitehill Way
Swindon