



# Awel y Môr Offshore Wind Farm

## Category 6: Environmental Statement

**Volume 6, Annex 10.5: SLVIA  
Visualisations - Figure 56  
(ViewPoint 29 - Colwyn Bay  
Promenade)**

**Date: April 2022**

**Revision: A**

Application Reference: 6.6.10.5.29

Pursuant to: APFP Regulation 5(2)(a)



REVISION	DATE	STATUS/ REASON FOR ISSUE	AUTHOR:	CHECKED BY:	APPROVED BY:
A	April 2022	ES	OPEN	SLR/GoBe	RWE

[REDACTED]

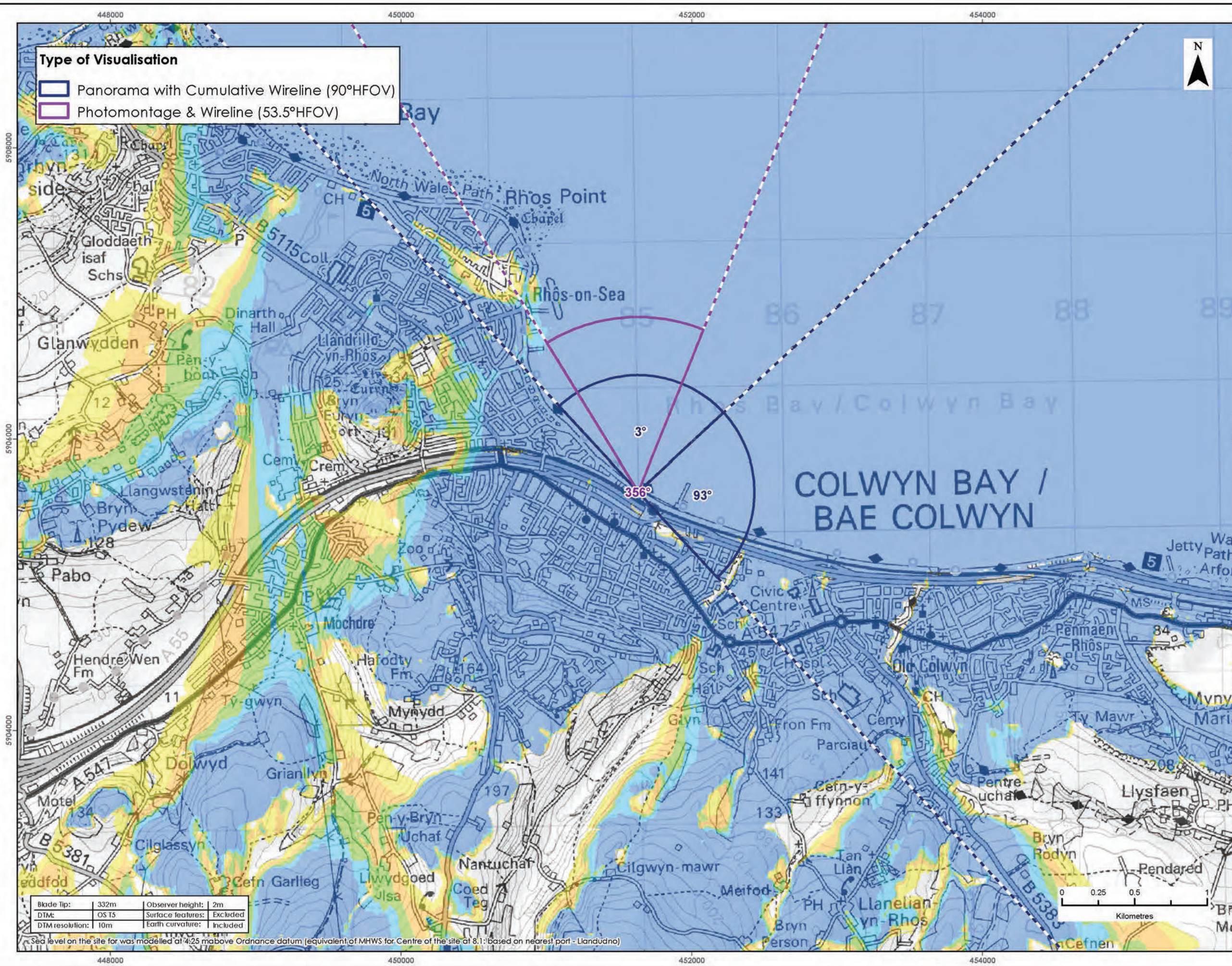
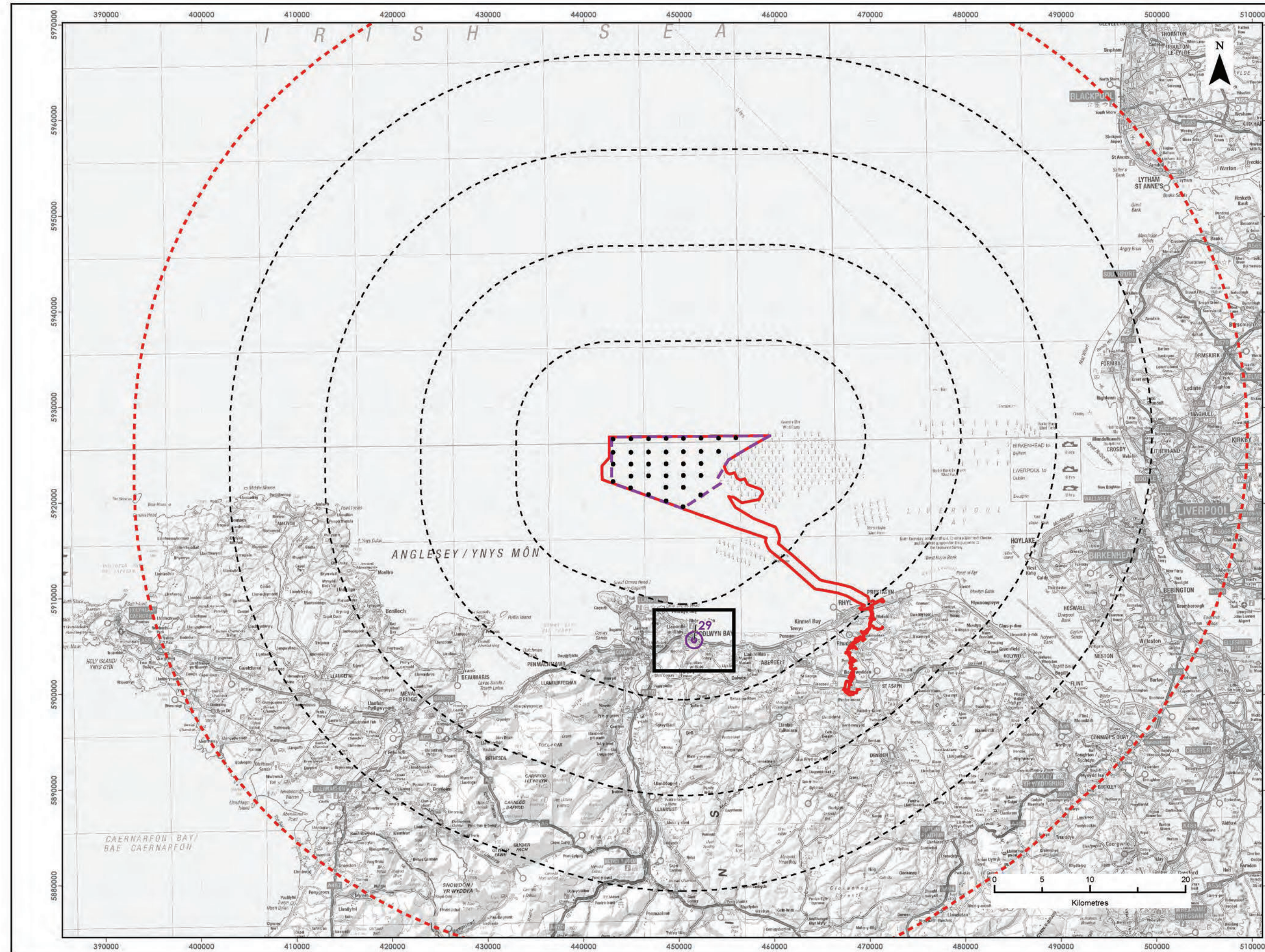
RWE Renewables UK  
Swindon Limited

Windmill Hill Business Park  
Whitehill Way  
Swindon  
Wiltshire SN5 6PB

[REDACTED]  
[REDACTED]

Registered office:  
RWE Renewables UK  
Swindon Limited  
Windmill Hill Business Park  
Whitehill Way  
Swindon





**LEGEND**

- Order Limits
- Array Area
- 10km Radii
- 50km Study Area
- Wind Turbine Generators (indicative locations)
- Viewpoint Location
- Zone of Theoretical Visibility (Blade Tip)
- No. of Turbines Theoretically Visible

1 - 7
8 - 14
15 - 21
22 - 28
29 - 34

Data Sources:  
Contains OS data © Crown copyright and database right (2021).  
© Crown copyright. All rights reserved. (2021). Ordnance Survey Licence 0100031673.

PROJECT TITLE:  
AWEL Y MÔR OFFSHORE WINDFARM

FIGURE TITLE:  
Viewpoint 29 - Colwyn Bay promenade

VER	DATE	REMARKS	Drawn	Checked
1	03/03/2022	For Issue	JM	LT

FIGURE NUMBER:  
Figure 56a

SCALE: 1:25,000 | PLOT SIZE: A3 | DATUM: WGS84 | PROJECTION: UTM30N

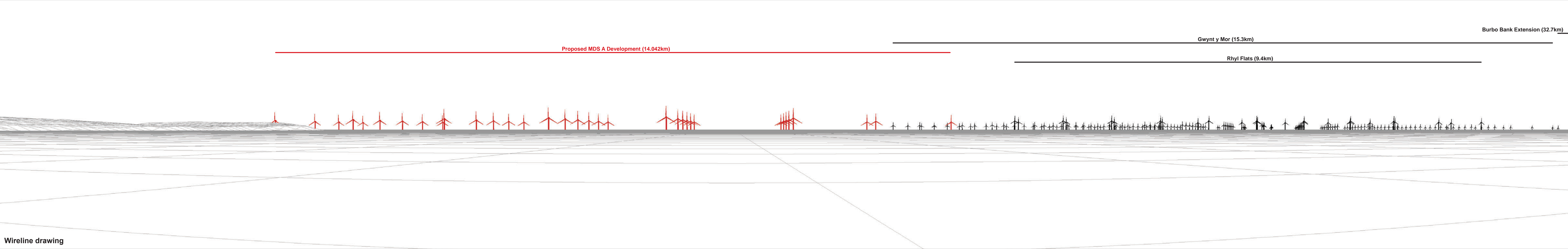
From Wynt Allt  
**AWEL Y MÔR**  
Offshore Wind Farm





Baseline photograph

This image provides landscape and visual context only



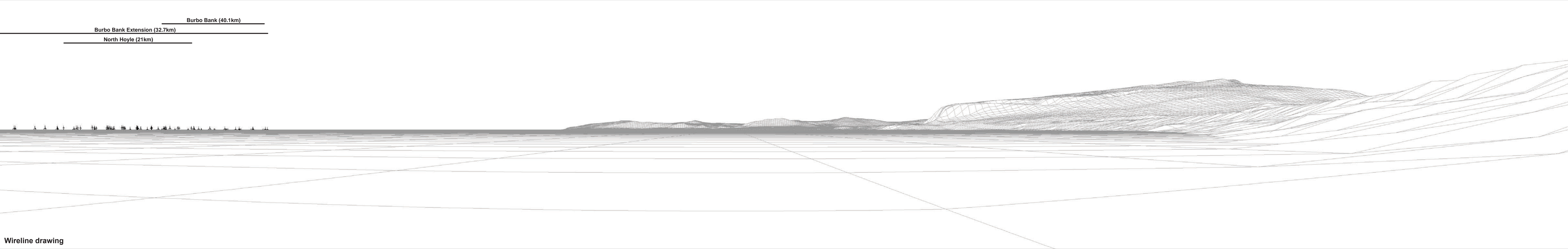
Wireline drawing





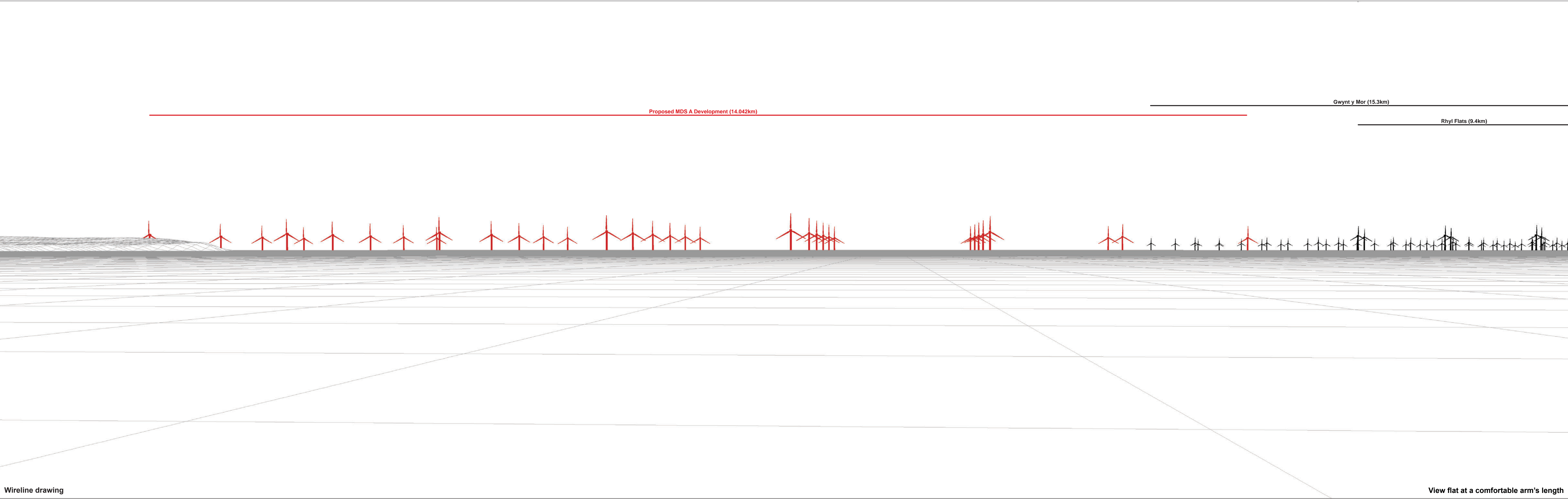
Baseline photograph

This image provides landscape and visual context only



Wireline drawing







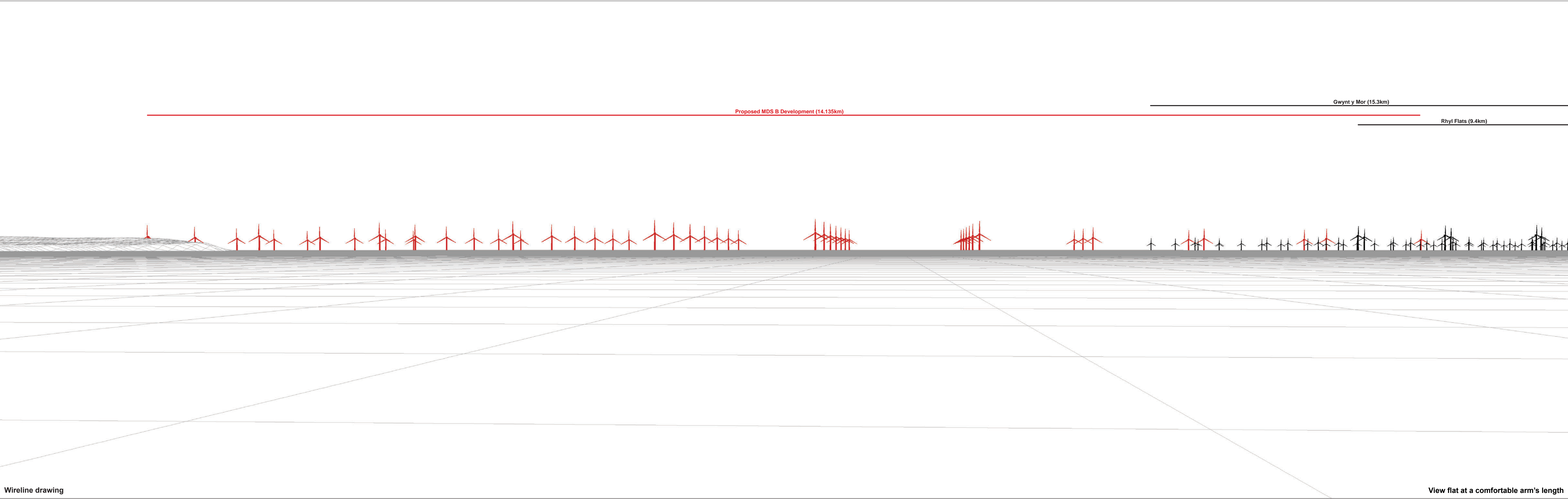


Photomontage: Proposed MDS A Development

View flat at a comfortable arm's length

<b>OS reference:</b>	284997 E 379285 N	<b>Horizontal field of view:</b>	53.5° (planar projection)	<b>Camera:</b>	Canon EOS 6D	<b>Figure: 56e</b>
<b>Eye level:</b>	1.7 mAOD	<b>Principal distance:</b>	812.5 mm	<b>Lens:</b>	Canon EF 50mm f/1.4	<b>Viewpoint 29: Colwyn Bay promenade</b>
<b>Direction of view:</b>	356°	<b>Paper size:</b>	841 x 297 mm (half A1)	<b>Camera height:</b>	1.5 m	<b>Awel y Môr Offshore Wind Farm</b>
<b>Nearest turbine:</b>	14.042 km	<b>Correct printed image size:</b>	820 x 260 mm	<b>Date and time:</b>	04.11.2020 16:17	<small>© Crown copyright. All rights reserved (2021). Licence number 0100031673</small>









Photomontage: Proposed MDS B Development

View flat at a comfortable arm's length

<b>OS reference:</b> 284997 E 379285 N		<b>Horizontal field of view:</b> 53.5° (planar projection)		<b>Camera:</b> Canon EOS 6D	
<b>Eye level:</b> 1.7 mAOD		<b>Principal distance:</b> 812.5 mm		<b>Lens:</b> Canon EF 50mm f/1.4	
<b>Direction of view:</b> 356°		<b>Paper size:</b> 841 x 297 mm (half A1)		<b>Camera height:</b> 1.5 m	
<b>Nearest turbine:</b> 14.135 km		<b>Correct printed image size:</b> 820 x 260 mm		<b>Date and time:</b> 04.11.2020 16:17	

**Figure: 56g**

**Viewpoint 29: Colwyn Bay promenade**

**Awel y Môr Offshore Wind Farm**

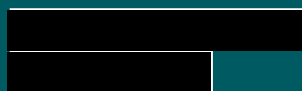
© Crown copyright. All rights reserved (2021). Licence number 0100031673





RWE Renewables UK  
Swindon Limited

Windmill Hill Business Park  
Whitehill Way  
Swindon  
Wiltshire SN5 6PB



Registered office:  
RWE Renewables UK  
Swindon Limited  
Windmill Hill Business Park  
Whitehill Way  
Swindon