



Awel y Môr Offshore Wind Farm

Category 6: Environmental Statement

**Volume 6, Annex 10.5: SLVIA
Visualisations - Figure 74
(ViewPoint 50 - Gwrych Castle –
Terrace)**

Date: April 2022

Revision: A

Application Reference: 6.6.10.5.47

Pursuant to: APFP Regulation 5(2)(a)



REVISION	DATE	STATUS/ REASON FOR ISSUE	AUTHOR:	CHECKED BY:	APPROVED BY:
A	April 2022	ES	OPEN	SLR/GoBe	RWE

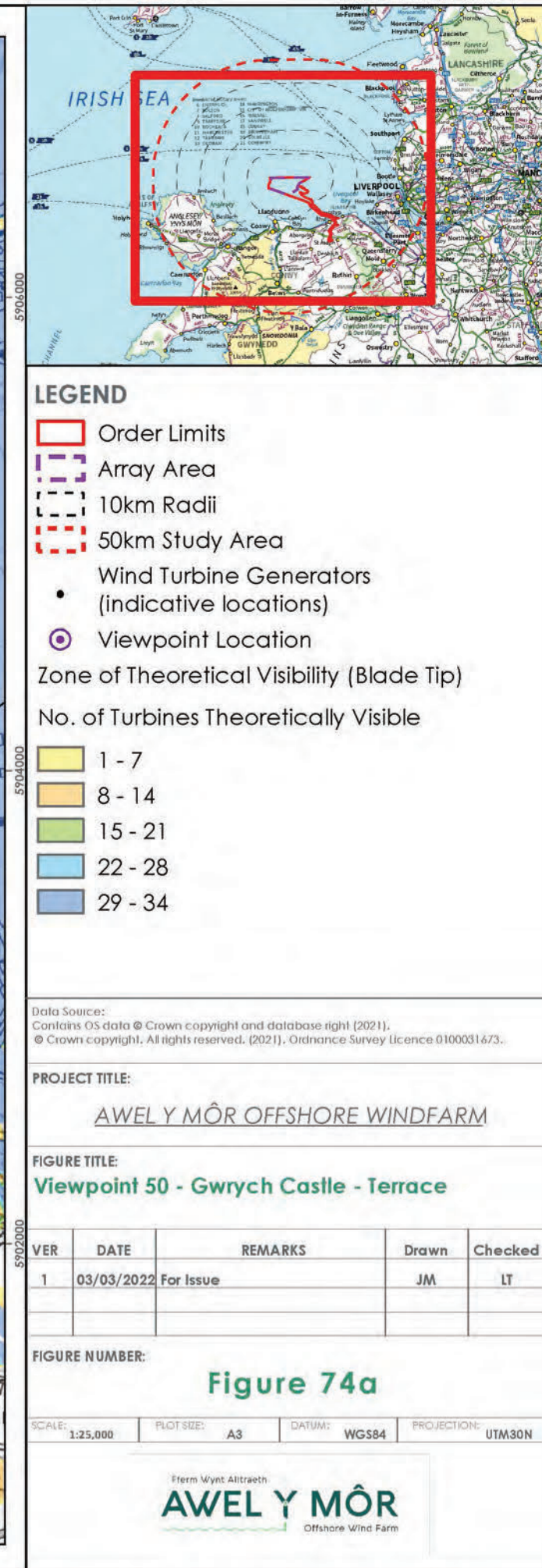
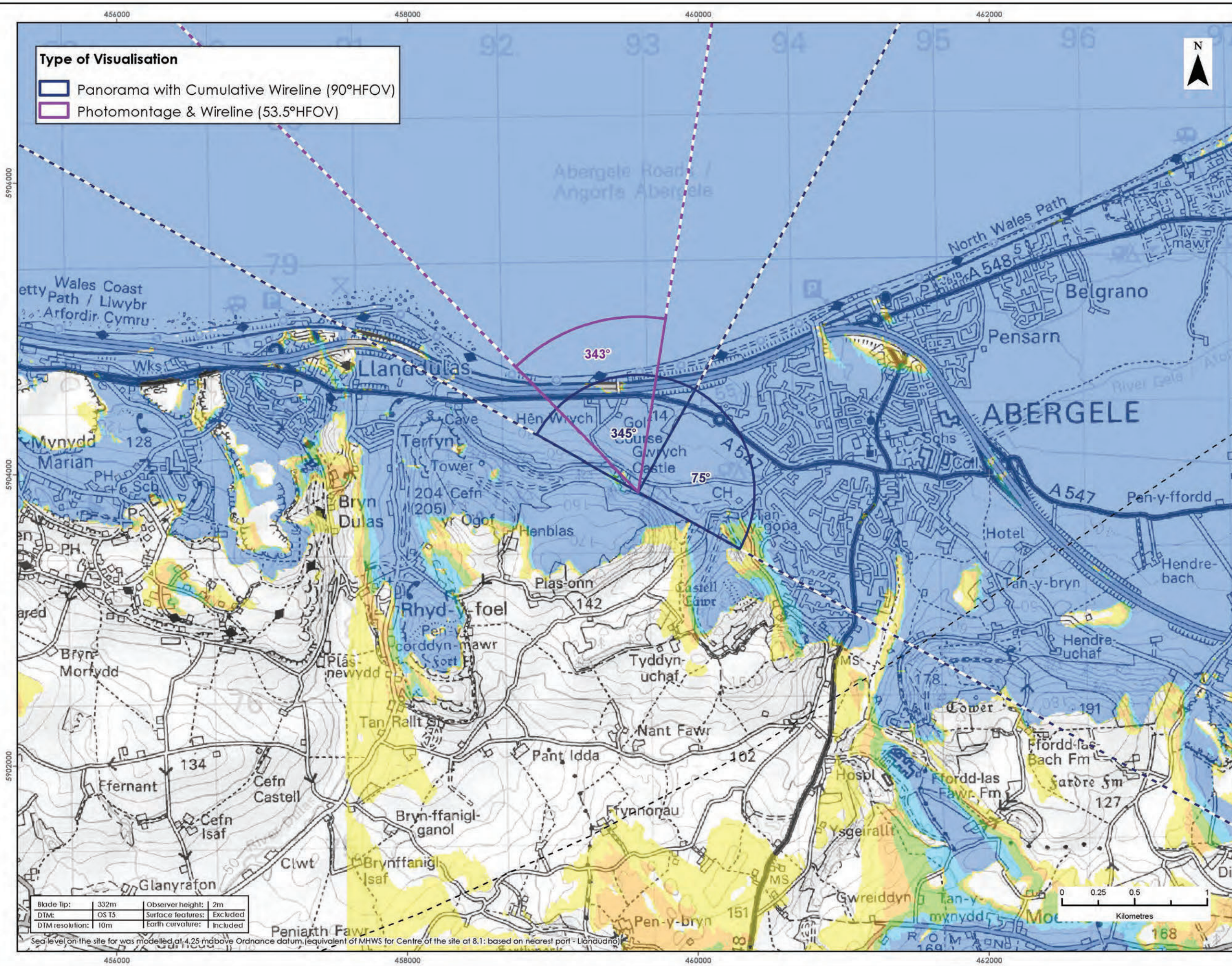
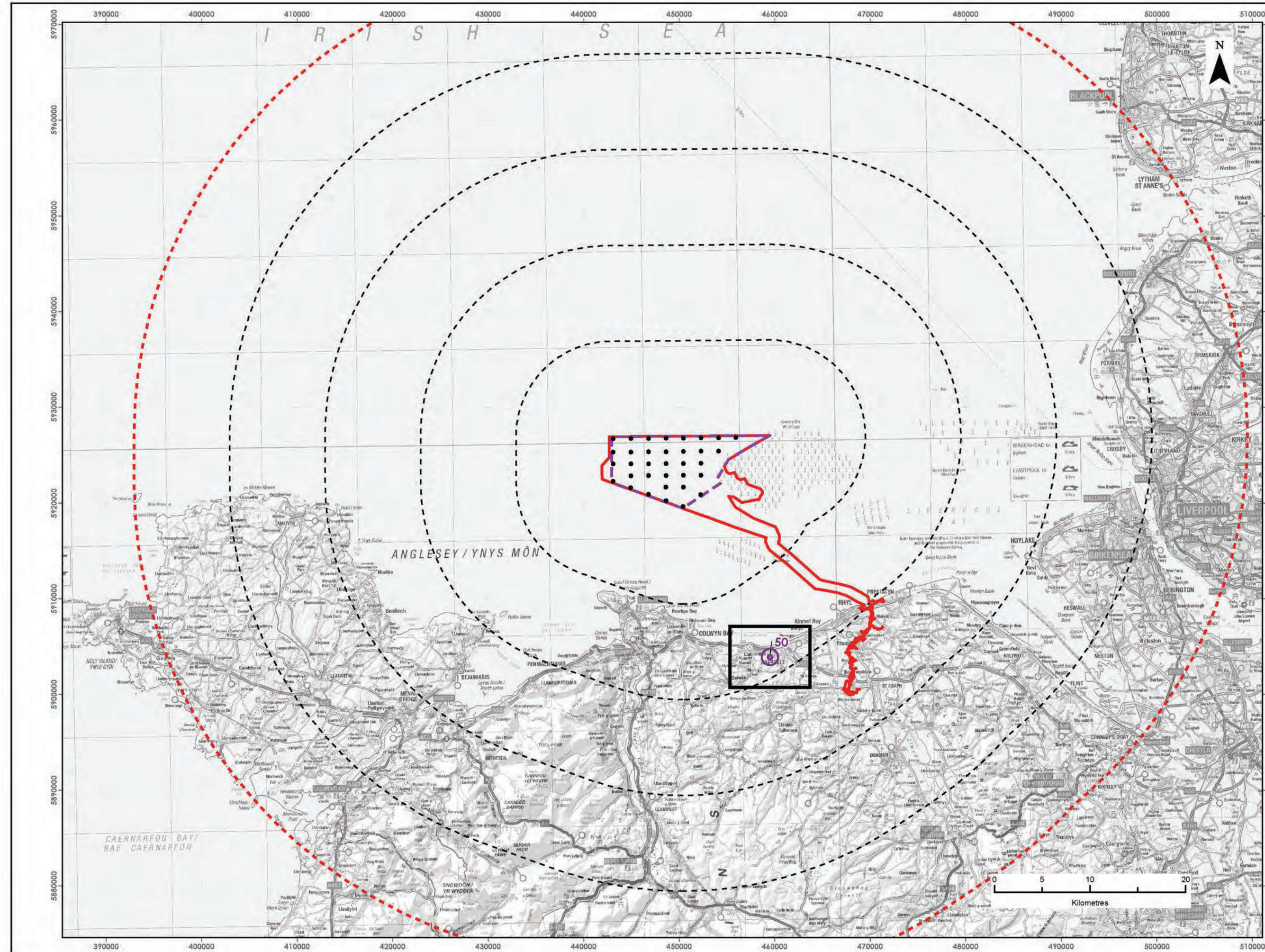
[REDACTED]

RWE Renewables UK
Swindon Limited

Windmill Hill Business Park
Whitehill Way
Swindon
Wiltshire SN5 6PB

[REDACTED]
[REDACTED]

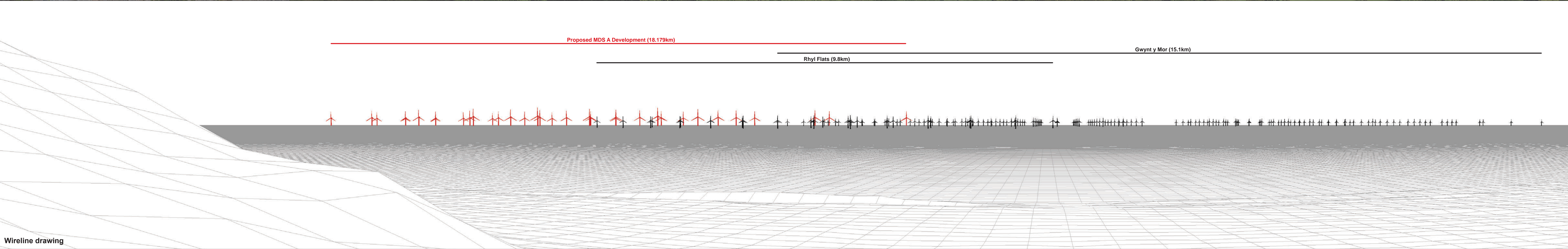
Registered office:
RWE Renewables UK
Swindon Limited
Windmill Hill Business Park
Whitehill Way
Swindon





Baseline photograph

This image provides landscape and visual context only

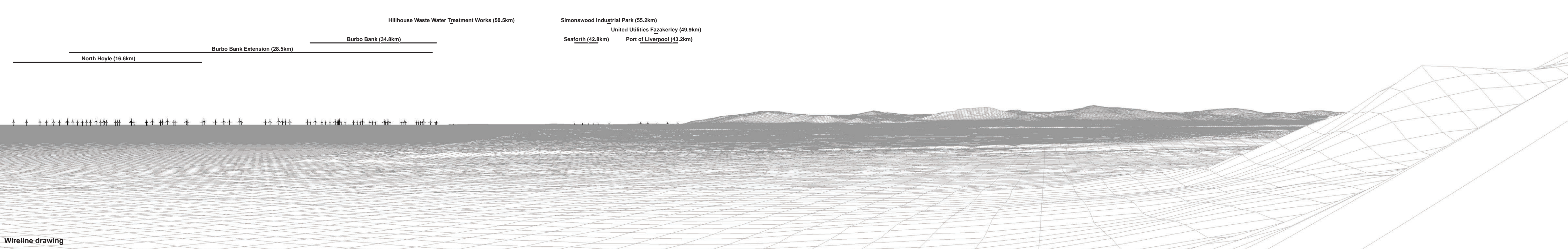


Wireline drawing

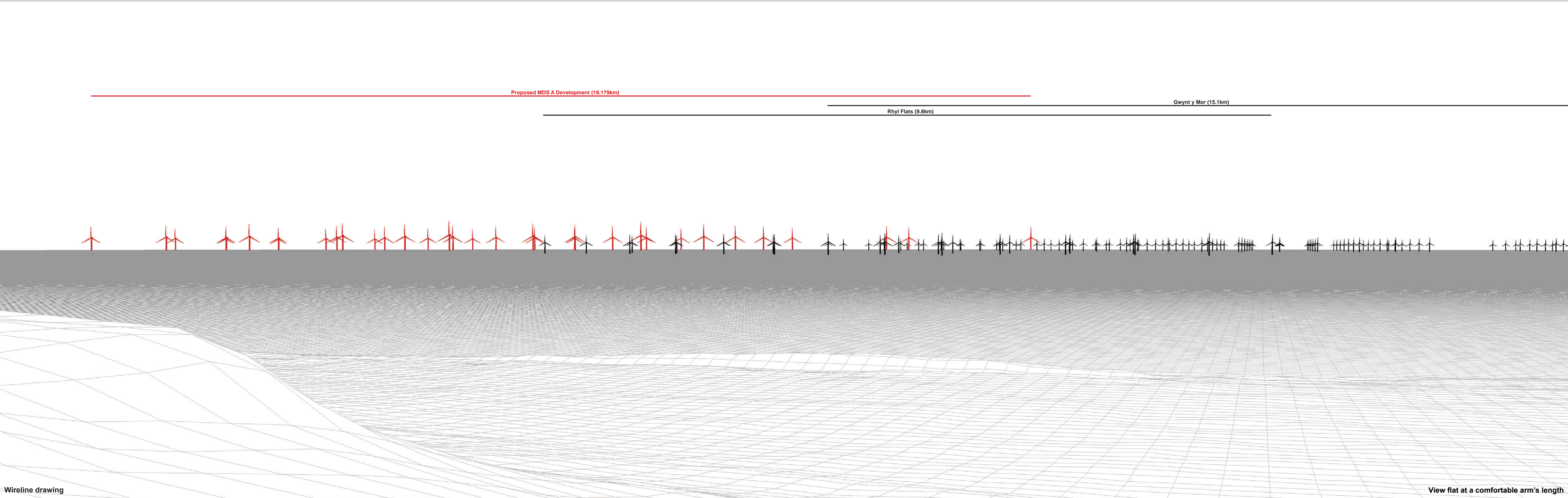


Baseline photograph

This image provides landscape and visual context only



Wireline drawing



Wireline drawing

View flat at a comfortable arm's length



Photomontage: Proposed MDS A Development (operational turbines have been montaged in this view)

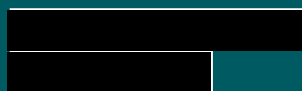
View flat at a comfortable arm's length

OS reference:	292928 E 377418 N	Horizontal field of view:	53.5° (planar projection)	Camera:	Canon EOS 6D	Figure: 74e
Eye level:	72.9 mAOD	Principal distance:	812.5 mm	Lens:	Canon EF 50mm f/1.4	Viewpoint 50: Gwrych Castle - Terrace
Direction of view:	343°	Paper size:	841 x 297 mm (half A1)	Camera height:	1.5 m	Awel y Môr Offshore Wind Farm
Nearest turbine:	18.179 km	Correct printed image size:	820 x 260 mm	Date and time:	12.05.2021 11:01	<small>© Crown copyright. All rights reserved (2021). Licence number 0100031673</small>



RWE Renewables UK
Swindon Limited

Windmill Hill Business Park
Whitehill Way
Swindon
Wiltshire SN5 6PB



Registered office:
RWE Renewables UK
Swindon Limited
Windmill Hill Business Park
Whitehill Way
Swindon