

Outer Dowsing Offshore Wind

Perenco Protective Provisions Plan

Date: September 2025

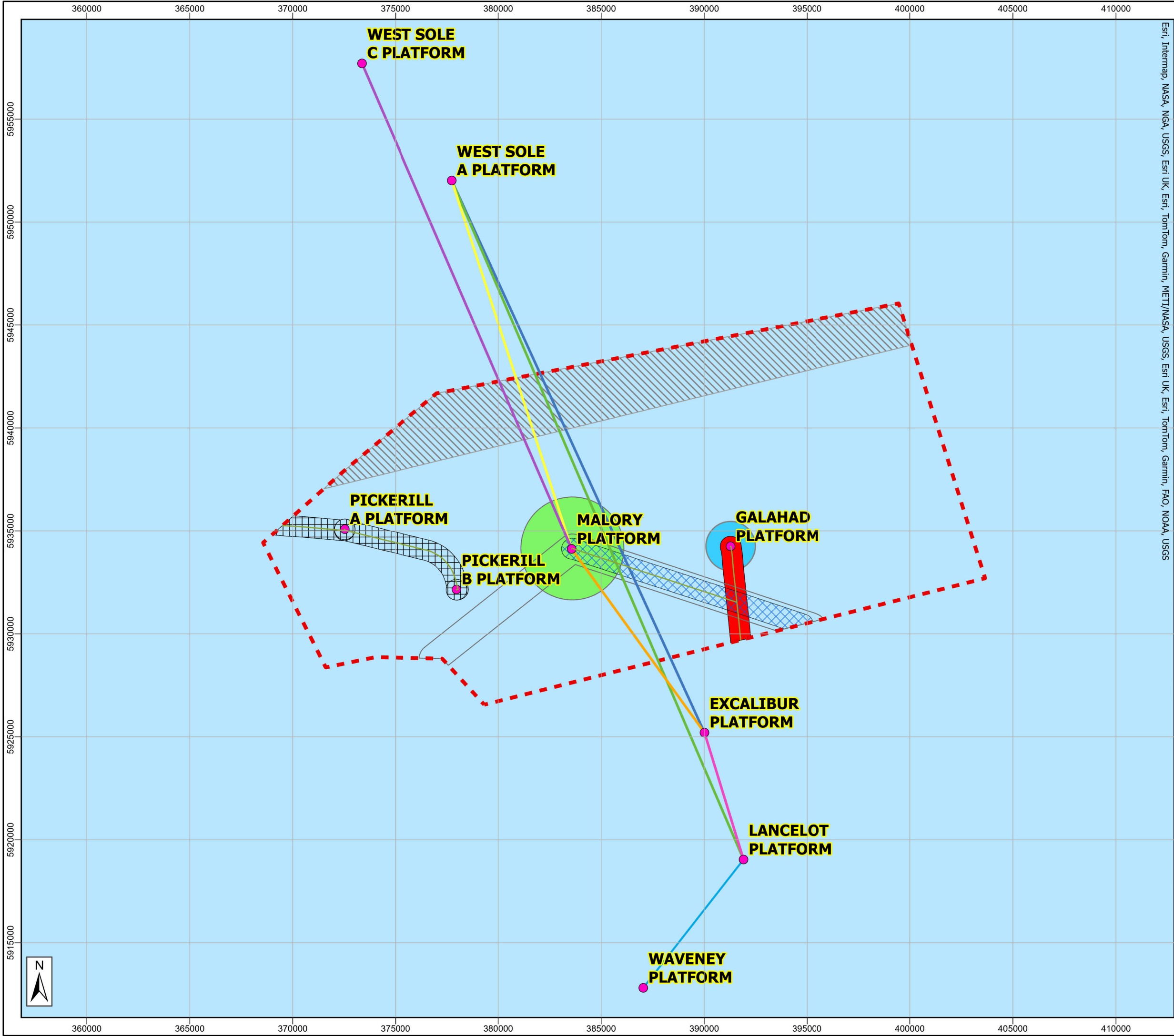
Document Reference: 21.15

Revision: 2.0

Company:		Outer Dowsing Offshore Wind		Asset:		Whole Asset	
Project:		Whole Wind Farm		Sub Project/Package:		Whole Asset	
Document Title or Description:		21.15 Perenco Protective Provisions Plan					
Internal Document Number:		PP1-ODOW-DEV-CS-REP-0271_02		3 rd Party Doc No (If applicable):		N/A	
Rev No.	Date	Status / Reason for Issue	Author	Checked by	Reviewed by	Approved by	
1.0	February 2024	Deadline 4	Outer Dowsing	Outer Dowsing	Outer Dowsing	Outer Dowsing	
2.0	September 2025	Request for Information Dated 12 th August 2025	Outer Dowsing	Outer Dowsing	Outer Dowsing	Outer Dowsing	

Change Log

- Version 2 shows the addition of inset plans for each line of communication. These inset plans demarcate the radius of the communications corridors.



Esri, Intermap, NASA, NGA, USGS, Esri UK, Esri, TomTom, Garmin, METI/NASA, USGS, Esri UK, Esri, TomTom, Garmin, FAO, NOAA, USGS

Legend

Perenco Platform Locations

Array Area

Galahad WTG Exclusion Zone

Malory WTG Exclusion Zone

Galahad Marine Corridor

Pickerill Marine Corridor

Malory Marine Corridor

Aviation Corridor

Offshore Restricted Build Area

Pipelines (NSTA)

Excalibur to Lancelot communication line

Lancelot to Waveney communication line

Malory to Excalibur communication line

West Sole A to Excalibur communication line

West Sole C to Malory communication line

West Sole A to Lancelot communication line

West Sole A to Malory communication line

Notes:

Offshore Coordinate System

Datum: WGS 1984

Spheroid: WGS 1984

Projection: UTM Zone 31N

Central Meridian: 3 E

Vertical Reference: LAT (Lowest Astronomical Tide)

036912

km

UNITED KINGDOM

Dublin

London

Amsterdam

Cologne

GERMANY

Copenhagen

Be

Title:

Perenco Protective Provision Plan

Drawing No:

Drawing 1 of 6

Page Size: A3

Rev	Date	Revision Status	Prepared	Checked	Approved

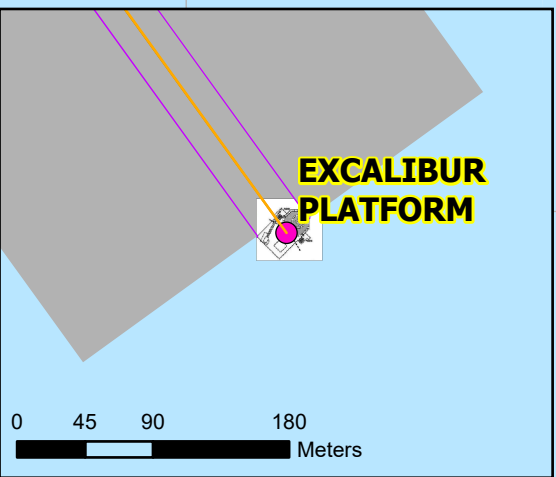
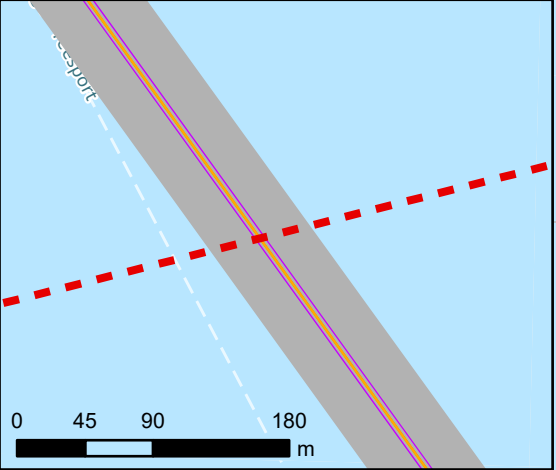
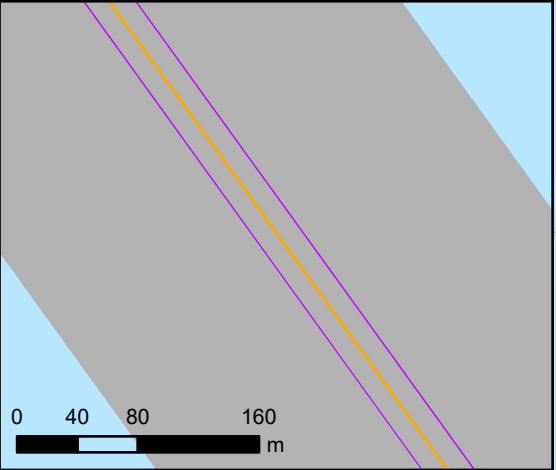
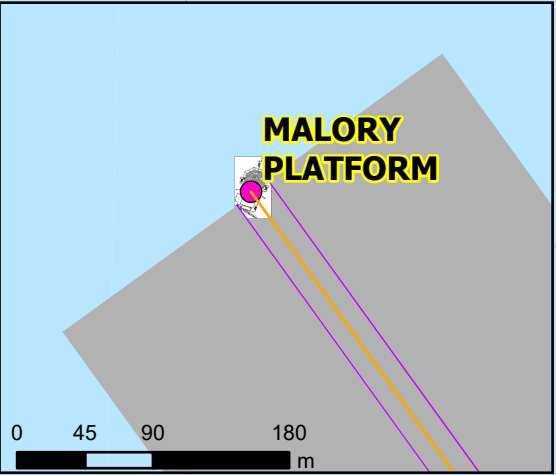
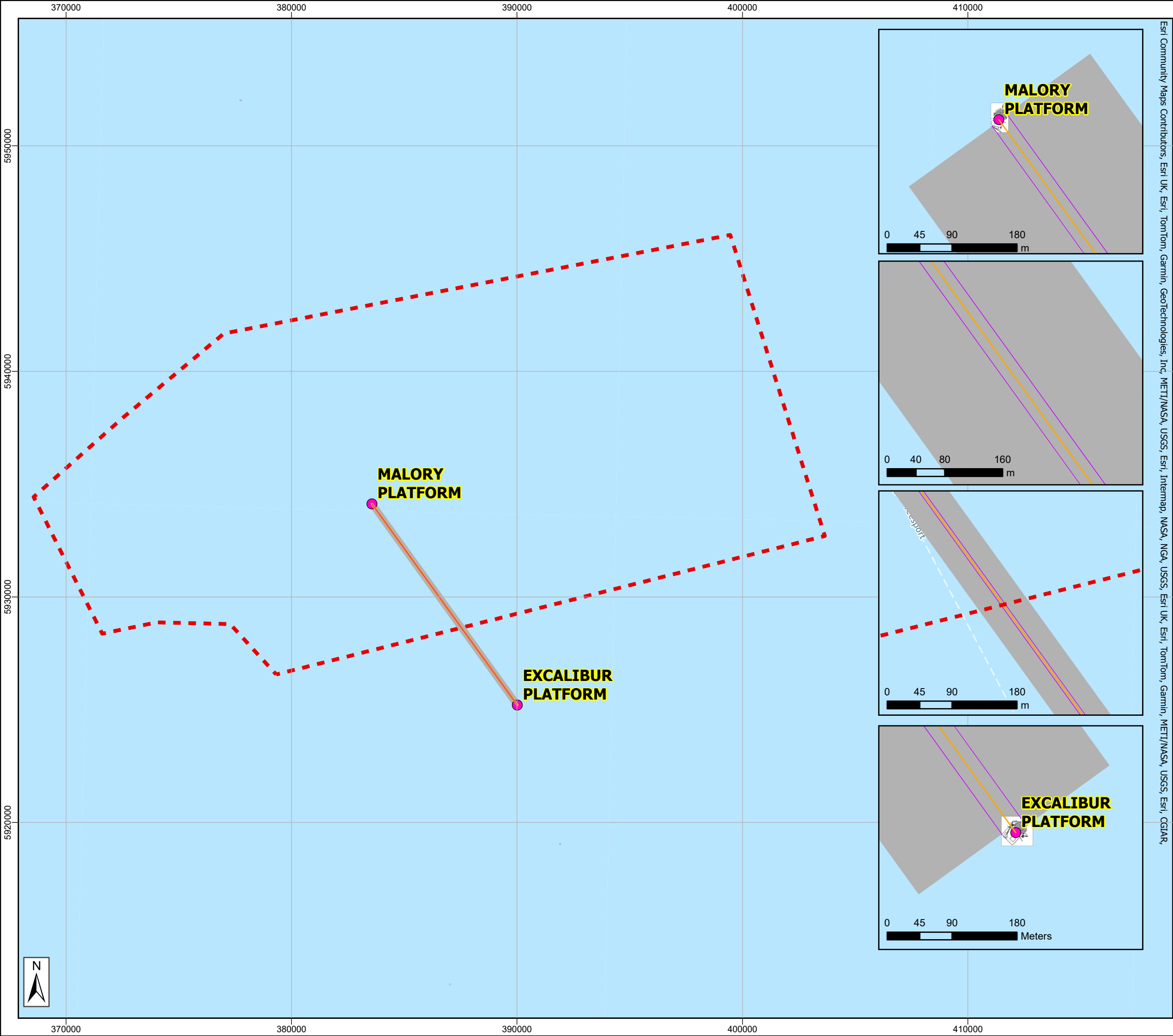
OUTER DOWSING

OFFSHORE WIND

This document may only be used for the purpose for which it was commissioned and in accordance with the terms of engagement for that commission.

Unauthorised use of this document in any form whatsoever is prohibited.

1:175,000



Esri Community Maps Contributors, Esri UK, Esri, TomTom, Garmin, GeoTechnologies, Inc, METI/NASA, USGS, Esri, Intermap, NASA, NGA, USGS, Esri UK, Esri, TomTom, Garmin, METI/NASA, USGS, Esri, CGAR,

Legend

- Perenco Platform (Centre point locations)
- Array Area
- Malory to Excalibur Communication Corridor of two overlapping 142m radius cylindrical shaped corridors
- Line representing the outermost corners of the platform
- Malory to Excalibur communication line

Notes:

Offshore Coordinate System
Datum: WGS 1984
Spheroid: WGS 1984
Projection: UTM Zone 31N
Central Meridian: 3 E
Vertical Reference: LAT (Lowest Astronomical Tide)

0 2.5 5 7.5 10 km

UNITED KINGDOM
Dublin
London
Amsterdam
Cologne
GERMANY
Copenhagen
Be

Title:
Malory to Excalibur communications corridor inset plan

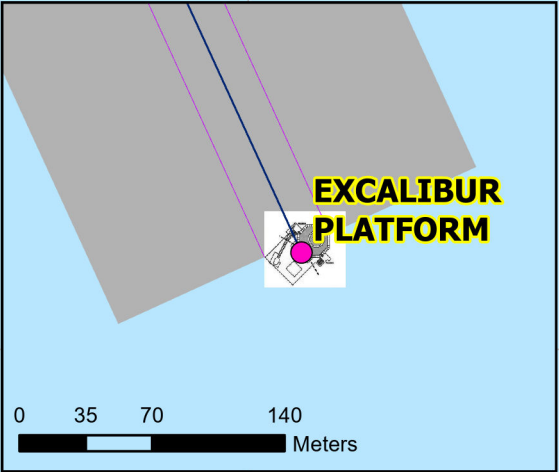
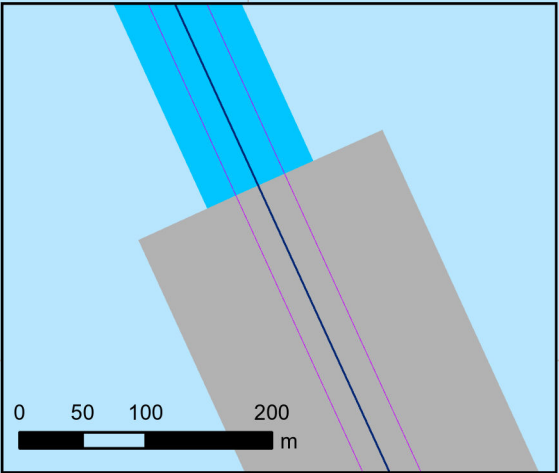
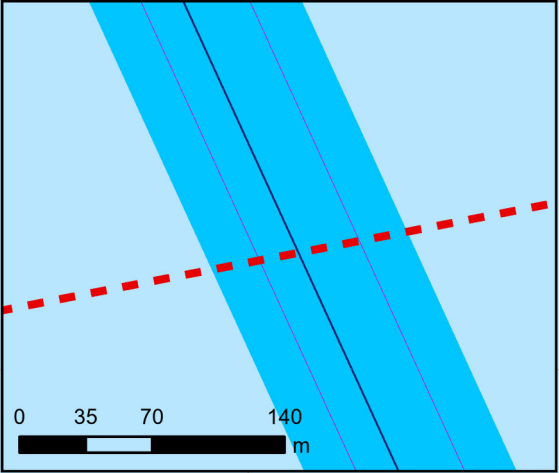
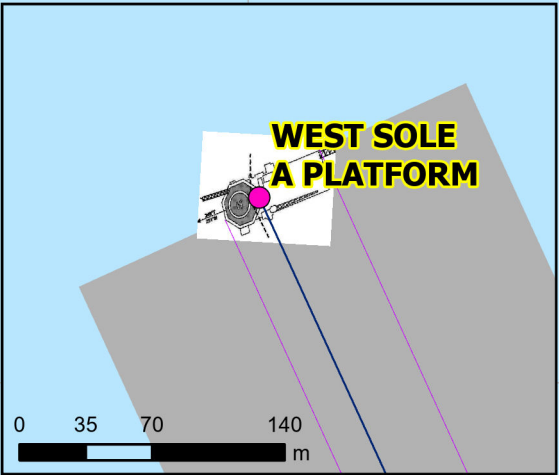
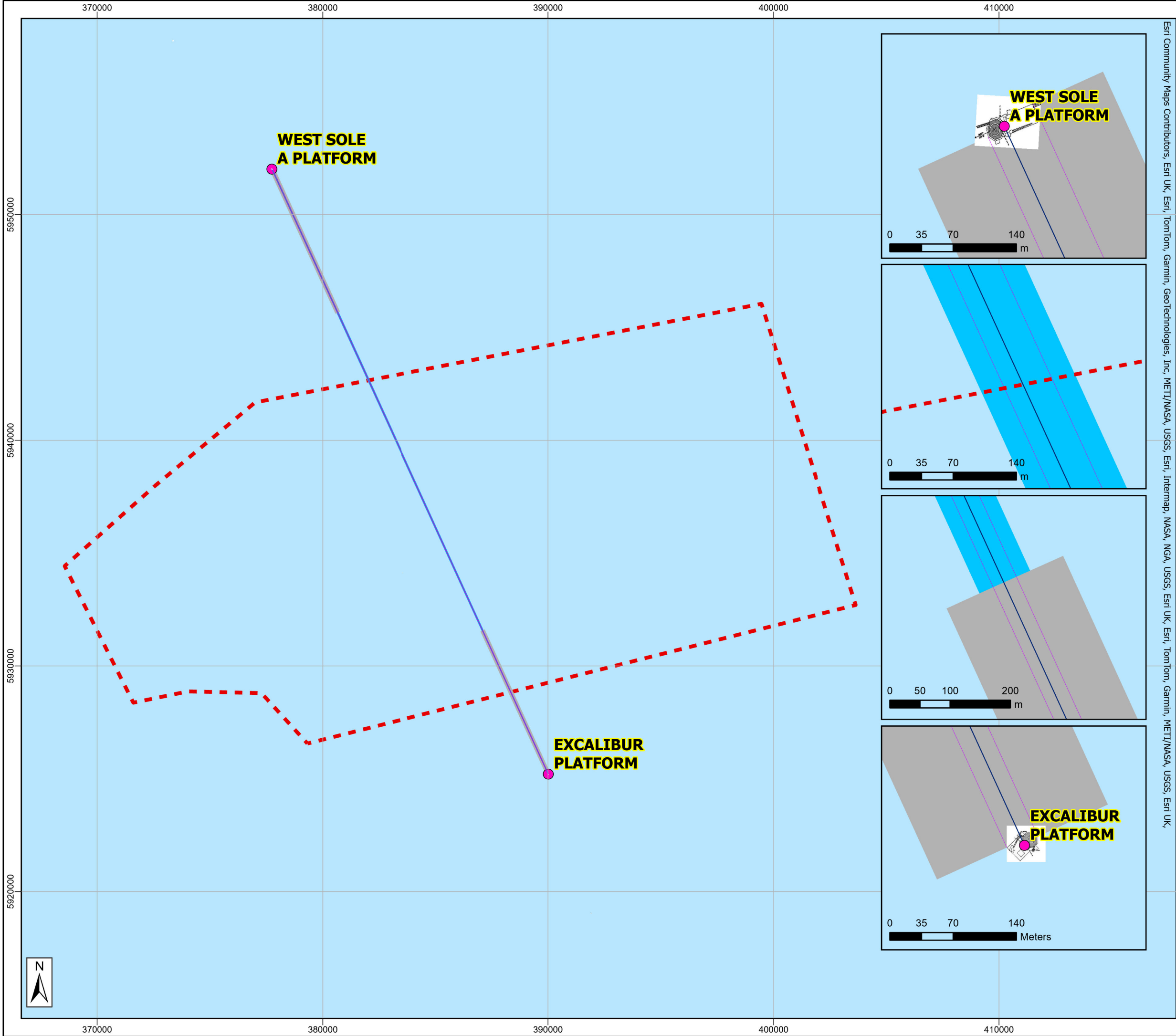
Drawing No:

Drawing 2 of 6					Page Size: A3	
Rev	Date	Revision Status	Prepared	Checked	Approved	

OUTER DOWSING
OFFSHORE WIND

This document may only be used for the purpose for which it was commissioned and in accordance with the terms of engagement for that commission. Unauthorised use of this document in any form whatsoever is prohibited.

1:160,000

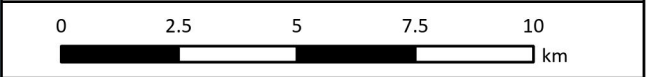


Legend

- Perenco Platform (Centre point locations)
- Array Area
- West Sole A to Excalibur Communication Corridor of two overlapping 85m radius cylindrical shaped corridors
- West Sole A to Excalibur Communication Corridor of two overlapping 25m radius cylindrical shaped corridors
- Line representing the outermost corners of the platform
- West Sole A to Excalibur communication line

Notes:

Offshore Coordinate System
Datum: WGS 1984
Spheroid: WGS 1984
Projection: UTM Zone 31N
Central Meridian: 3 E
Vertical Reference: LAT (Lowest Astronomical Tide)



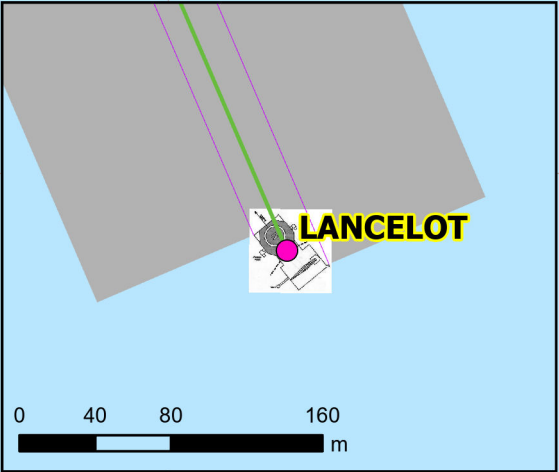
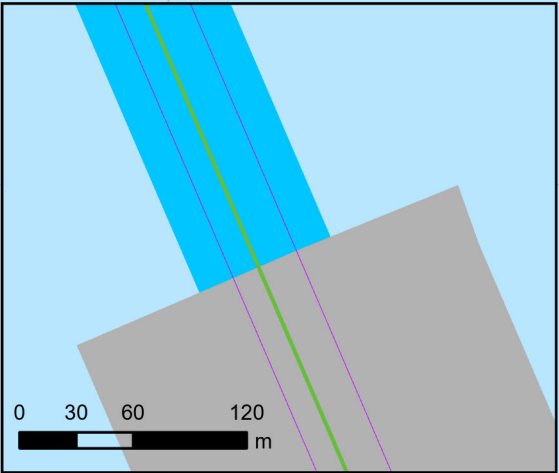
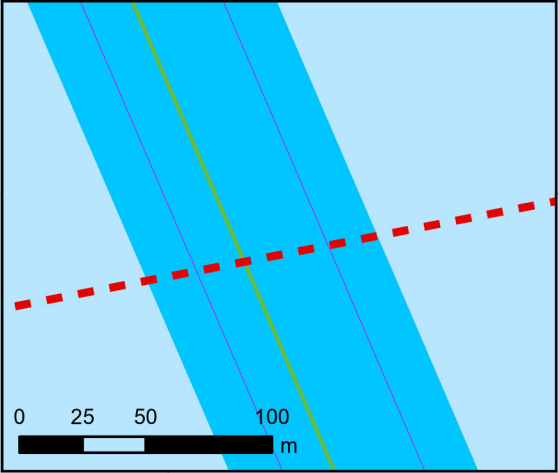
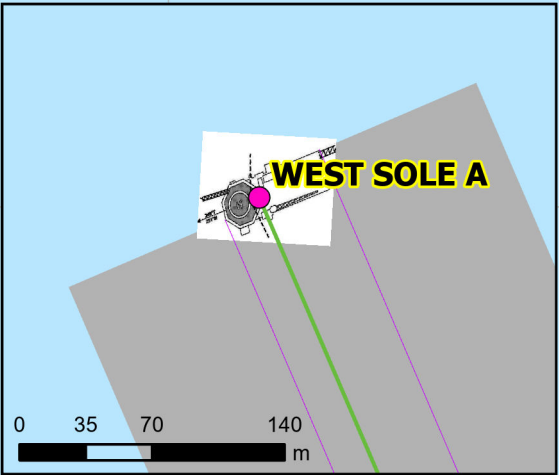
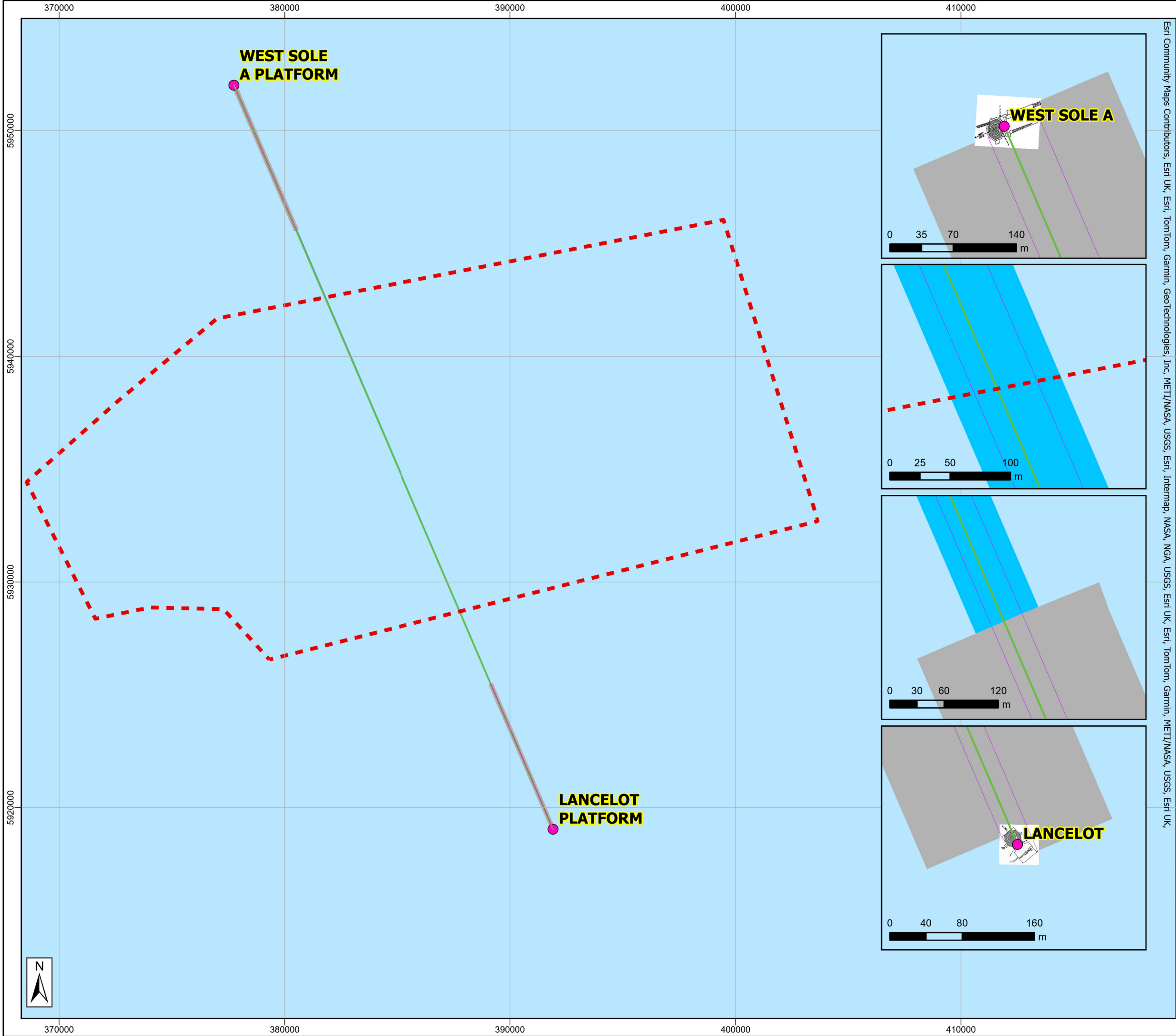
Title:
West Sole A to Excalibur communications corridor inset plan

Drawing No:

Drawing 3 of 6				Page Size: A3	
Rev	Date	Revision Status	Prepared	Checked	Approved



This document may only be used for the purpose for which it was commissioned and in accordance with the terms of engagement for that commission. Unauthorised use of this document in any form whatsoever is prohibited.

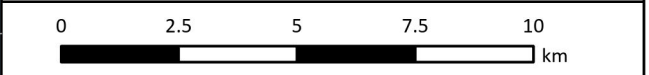


Legend

- Perenco Platform (Centre point locations)
- Array Area
- West Sole A to Lancelot Communication Corridor of two overlapping 19.5m radius cylindrical shaped corridors
- West Sole A to Lancelot Communication Corridor of two overlapping 90m radius cylindrical shaped corridors
- Line representing the outermost corners of the platform
- West Sole A to Lancelot communication line

Notes:

Offshore Coordinate System
Datum: WGS 1984
Spheroid: WGS 1984
Projection: UTM Zone 31N
Central Meridian: 3 E
Vertical Reference: LAT (Lowest Astronomical Tide)

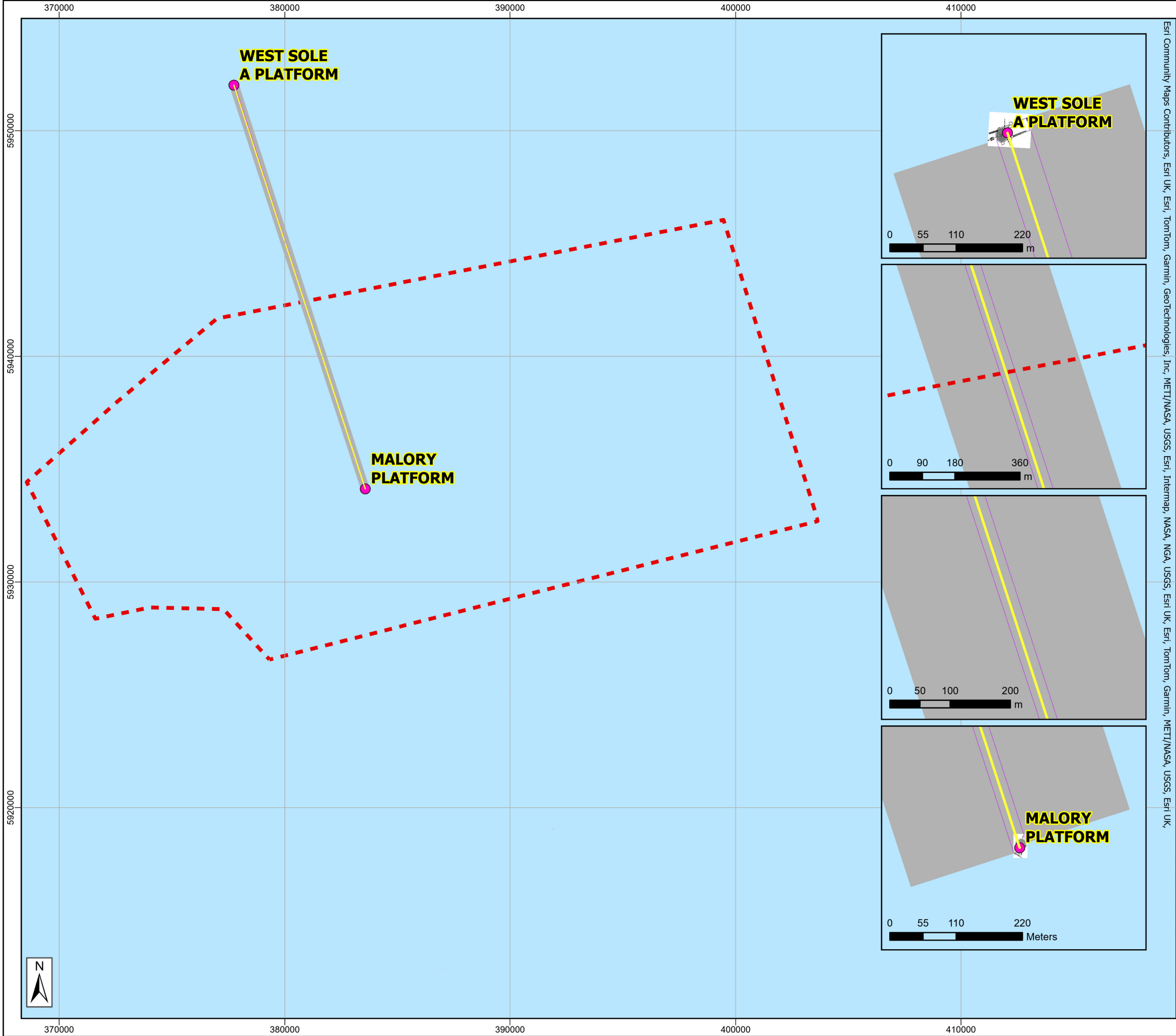


Title:
West Sole A to Lancelot communications corridor inset plan

Drawing No:					
Drawing 4 of 6					Page Size: A3
Rev	Date	Revision Status	Prepared	Checked	Approved



This document may only be used for the purpose for which it was commissioned and in accordance with the terms of engagement for that commission. Unauthorised use of this document in any form whatsoever is prohibited.



Esri Community Maps Contributors, Esri UK, Esri, TomTom, Garmin, GeoTechnologies, Inc, METI/NASA, USGS, Esri, Intermmap, NASA, NGA, USGS, Esri UK, Esri, TomTom, Garmin, METI/NASA, USGS, Esri UK,

Legend

- Perenco Platform (Centre point locations)
- ▬ Array Area
- West Sole A to Malory communication line
- Line representing the outermost corners of the platform
- West Sole A to Malory Communication Corridor of two overlapping 180m radius cylindrical shaped corridors

Notes:

Offshore Coordinate System
Datum: WGS 1984
Spheroid: WGS 1984
Projection: UTM Zone 31N
Central Meridian: 3 E
Vertical Reference: LAT (Lowest Astronomical Tide)

0 2.5 5 7.5 10 km

Title:
West Sole A to Malory communications corridor inset plan

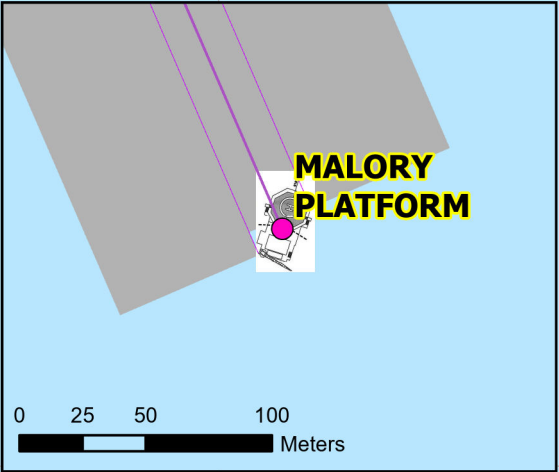
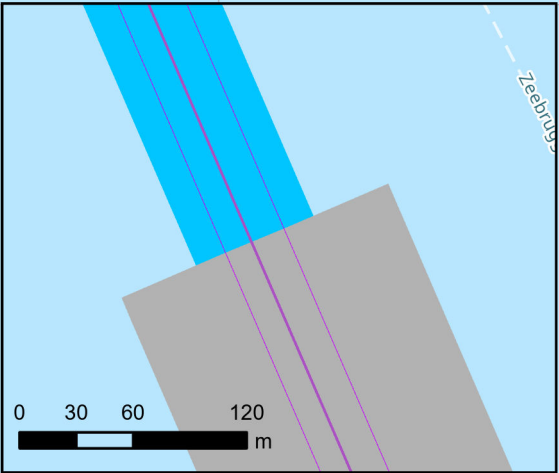
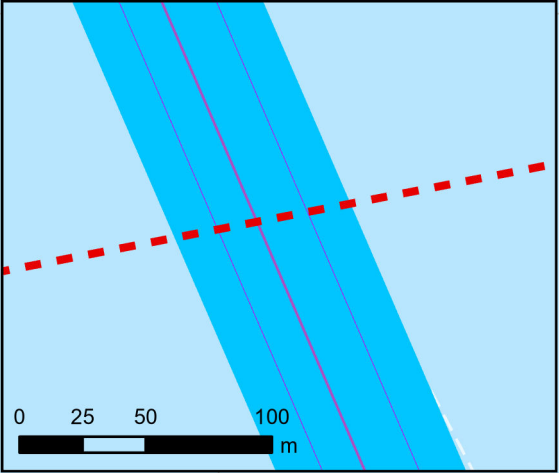
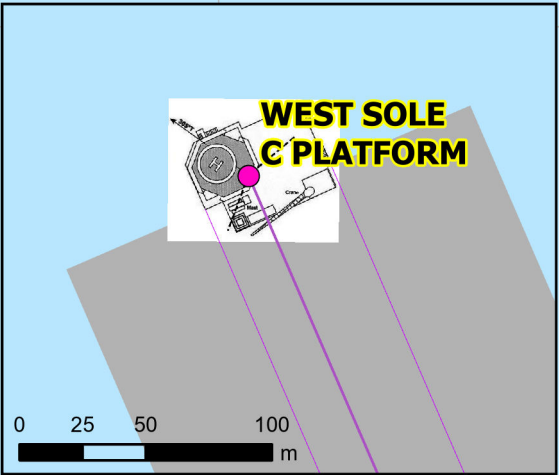
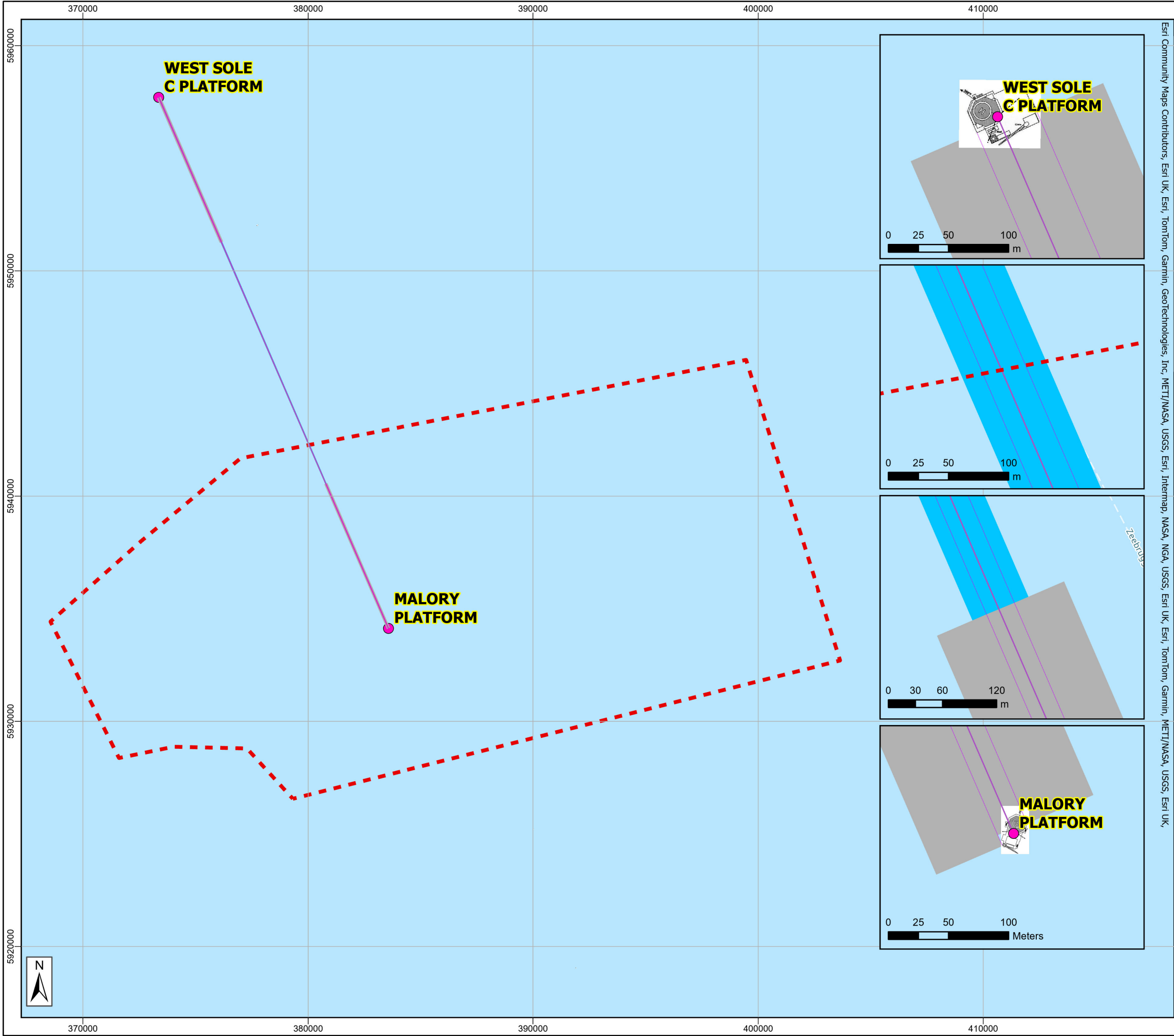
Drawing No:

Drawing 5 of 6					Page Size: A3	
Rev	Date	Revision Status	Prepared	Checked	Approved	

OUTER DOWSING
OFFSHORE WIND

This document may only be used for the purpose for which it was commissioned and in accordance with the terms of engagement for that commission. Unauthorised use of this document in any form whatsoever is prohibited.

1:160,000



Legend

- Perenco Platform Locations
- Array Area
- West Sole C to Malory Communication Corridor of two overlapping 60m radius cylindrical shaped corridors
- West Sole C to Malory Communication Corridor of two overlapping 17m radius cylindrical shaped corridors
- Line representing the outermost corners of the platform
- West Sole C to Malory communication line

Notes:

Offshore Coordinate System
Datum: WGS 1984
Spheroid: WGS 1984
Projection: UTM Zone 31N
Central Meridian: 3 E
Vertical Reference: LAT (Lowest Astronomical Tide)



Title:
West Sole C to Malory communications corridor inset plan

Drawing No:					
Drawing 6 of 6					Page Size: A3
Rev	Date	Revision Status	Prepared	Checked	Approved



This document may only be used for the purpose for which it was commissioned and in accordance with the terms of engagement for that commission. Unauthorised use of this document in any form whatsoever is prohibited.