



Cumnor Parish Neighbourhood Plan  
Important Views Report  
February 2021

# Introduction

The parish of Cumnor sits on a Corallian Limestone Ridge in the north of the Vale of the White Horse District Council (VoWHDC) administrative area. With an elevation range across the parish of more than 100m there are many Important Views within the parish, in addition to commanding views into and from the parish.

The VoWHDC's Landscape Character Assessment<sup>1</sup>, Section 3.6, states:

*'To the north of the central Vale there is a broad east-west ridge of Corallian Limestone, often referred to as the 'Mid Vale Ridge'. The northern edge of the ridge is marked by prominent, relatively steep, slopes. To the south, the ridge descends more gently, until it merges with the low-lying Vale centred on the River Ock. To the east, the ridge incorporates Boars Hill and Cumnor Hill to the west of Oxford.'*

It goes on to say in para 3.7:

*'the ridge forms a distinctive, often wooded, horizon in views north from the central Vale. The wooded backdrop is provided by the small blocks of woodland which pepper the ridge, as well as some extensive tracts of ancient woodland, particularly in the east of the District...including Wytham Great Wood.'*

Among the key positive landscape features of the Wooded Corallian Landscape Ridge are the:

*'distant views out from the ridge, from elevated locations and the edges of woodland, including history views of the 'dreaming spires' to the east.' It goes on to say that this ridge "provides a rural wooded backdrop and treed skyline in views from the low-lying Vale to the south, in views from the River Thames, and views west from Oxford.'*

The Landscape Strategy 'for the Corallian Limestone Ridge with Woodland' is to:

*'conserve the woodlands, hedges and riparian vegetation which give the ridge its treed character, protect remaining semi-natural habitats and resist further urbanising sprawl of low-density development". LPP1 recognises, particularly through CP44, that the Vale's distinct landscape character and key features need to be protected against inappropriate development and enhanced where possible.'*

The Cumnor NP Landscape Character Assessment states that:

*'the topography of the area lends itself to many important views both into and out of the parish is gently sloping, with high points to the north and south gently sloping to the centre in valley formation. The west of the parish is mainly flat at approximately*

---

<sup>1</sup> VoWHDC Landscape Character Assessment published as part of LPP2 Evidence Base  
[http://www.whitehorsedc.gov.uk/java/support/dynamic\\_serve.jsp?ID=789122277&CODE=75894BDDA4C45F37E6B8D920857BA0A2](http://www.whitehorsedc.gov.uk/java/support/dynamic_serve.jsp?ID=789122277&CODE=75894BDDA4C45F37E6B8D920857BA0A2) accessed 16<sup>th</sup> September 2020

*60m AOD. The high points of the Parish are Wytham Hill at 160m AOD to the north and Hurst Hill at 150m AOD and Cumnor Hill at 140m AOD to the south.'*

## Methodology for Assessing Important Views

In September 2018, the Neighbourhood Plan Steering Group commissioned Lepus Consulting to undertake a Landscape Character Assessment of the parish. Following careful analysis of landscape character in the NP area, 14 Landscape Character Areas (LCAs) were identified and assessments were made of landform, biodiversity and the natural environment, the built environment, community assets, important views and noise.

Using the 14 LCAs and the broad description and featured viewpoints that emerged from this fieldwork, a group of volunteers from the community then undertook additional fieldwork to hone the viewpoints and views.

The volunteers took photographs of key views identified in the Landscape Character Assessment study and described the direction, visual features and the extent of the view. After review by the Cumnor Neighbourhood Plan Steering Group this process identified 31 Important Views. These are listed below in Table 1 and shown on a map of the parish in Map 1.

In examining the Reg14 consultation responses to the 31 proposed Important Views it is clear that there is widespread support from parishioners for the designation of these views, reflecting both the here and now - what they can see with the naked eye within the Parish and in some cases beyond the Parish too - and their historical significance, with a number of the views being the subject of works by internationally renowned artists, photographers and authors.

Recognising that Important Views within a Neighbourhood Plan can only encompass views within the Plan area inevitably leaves the authors of this report with a dilemma: to describe a view by just referencing what can be seen within the Parish, and/or to describe it as a layperson would, including what can also be seen beyond the parish boundary, as any photo shows.

To resolve this dilemma the Important Views below have been mapped and described to explain what makes them an Important View in a formal sense for a Neighbourhood Plan. Additionally, in relevant cases, where any observer would also be able see beyond the Parish boundary, and so photos show significant landmarks, these are also described.

Given the elevation range across the Parish (60m to 165m<sup>2</sup>) there are a number of examples of this, of which three at high, mid and low elevations illustrate the point:

- Important Views 12a, b and c, at an elevation of 146m, have extensive Important Views within the Parish. In addition, hills in Buckinghamshire at Stokenchurch

---

<sup>2</sup> Elevations and distances from [Google Earth Pro](#) accessed September 2020

(240m elevation) in the Chilterns AONB can be seen at a distance of 27.5km, along with hills to the north of Burford (195m elevation, 24km distance) in the Cotswolds AONB.

- At a mid-elevation (125m) Important View 30 looks south across open farmland and woods within the Parish. Framing this Important View are views of the Berkshire Downs, south of Harwell and Wantage, at a distance of 22km, and further west, seen because of their elevation (215m).
- At a low elevation (65m) Important View 20a looks across a Nature Reserve in the Parish. In the background, however, on the west side of the adjacent Thames in West Oxfordshire, the steeple of Stanton Harcourt Church can be seen at a distance of 2.5km.

## Important Views

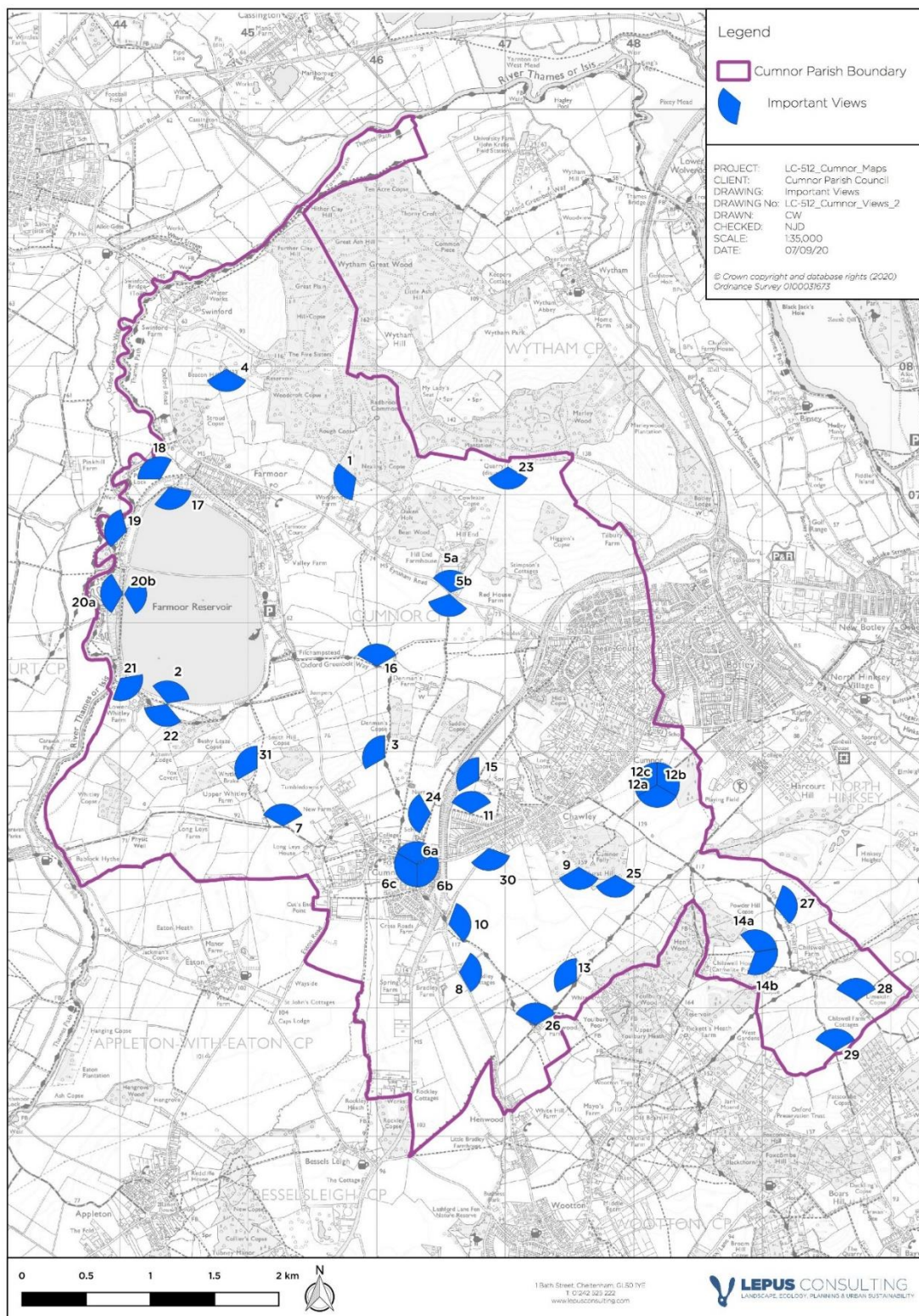
The table below lists all the important views in Cumnor Parish.

Ref No	Name	Location by Landscape Character Assessment area
1	Rough Copse	LCA4
2	Farmoor Reservoir	LCA2
3	Denman's Copse	LCA8
4	Beacon Hill	LCA4
5a & 5b	Red House Farm	LCA7
6a, 6b & 6c	St Michael's Church	LCA10
7	Long Leys Meadow	LCA9
8	Bradley Farm	LCA13
9	Western Edge of Hurst Hill	LCA13
10	Footpath at Cumnor Hill	LCA13
11	Hids and Shadwell Copses	LCA12
12a, 12b & 12c	Cumnor Beacon	LCA14
13	Oxford Green Belt Way	LCA13
14a & 14b	Chilswell Farm	LCA14
15	Chawley Lane	LCA12
16	Denman's Farm	LCA8
17	Pinkhill Lock 1	LCA2
18	Pinkhill Lock 2	LCA2
19	Pinkhill Nature Reserve	LCA2
20a & 20b	Shrike Meadow and Buckthorn Meadow Nature Reserves & Farmoor Reservoir	LCA2
21	Thames side pasture nr Lower Whitley Farm	LCA2
22	Whitley Copse and Physic Well	LCA2
23	The Singing Way	LCA6
24	The Bird Hide, Denman's Lane	LCA8
25	Hurst Hill SE Corner	LCA13
26	Oxford Green Belt Way, Henwood Farm	LCA13
27	Chilswell Path, Powder Hill Copse	LCA14
28	Limekiln Copse	LCA14
29	Chilswell Farm Cottages	LCA14
30	Cumnor Hill Top	LCA13
31	Smith Hill Copse	LCA8

*Table 1: Cumnor Parish Important Views*

Map 1 below illustrates the location and direction of the views. In all cases the views are both immediate and expansive. This is due to the topography of the area, having a number of elevated positions affording both short and long views. Therefore, the full depth of the view cannot easily be shown. For a description of each view please go to the relevant number in the report.





Map 1 Important Views in Cumnor Parish

## View 1

Location: LCA4

Viewpoint: Rough Copse, edge of Wytham Woods

Direction of View: South West

Content of View: From Great Wytham Woods, this elevated view provides vistas across to Farmoor reservoir, and Farmoor village, giving a real appreciation of the Farmoor valley.

Additional Evidence: Views are limited during summer due to dense trees and vegetation, however the views are long during the winter months. Evidenced in Cumnor NP

Landscape Character Assessment LCA5 Para 9.5.2



*View 1 Elevated view to Farmoor village and the reservoir*



## View 2

Location: LCA2

Viewpoint: SW side of Farmoor Reservoir

Direction of view: North East

Content of View: Farmoor valley towards Great Wytham Woods. Great Wytham Wood forms a wooded backdrop in views across the valley to the north east. Views across the large waterbody of the reservoir from the top of the surrounding embankment, including from the public footpath adjacent to the south-western edge.

Additional Evidence: There are views across the large waterbody of the reservoir from the top of the surrounding embankment, including the public footpath adjacent to the south-western edge of the reservoir. The reservoir is a prominent feature in views from the elevated locations which overlook the area to the north, east and south. Evidenced in Cumnor NP Landscape Character Assessment Para 6.5.2 LCA2



*View 2 Farmoor Reservoir & Wytham Woods from surrounding embankment.*



## View 3

Location: LCA8

Viewpoint: Just above Denman's Copse

Direction of view: North West

Content of View: Key panoramic view of Farmoor Valley. From a stand of mature woodland (Denman's Copse) to the north through to a south-westerly view back to Tumbledown Hill this elevated panorama looks in the foreground down across the valley, from Hill End to the north, across Farmoor Reservoir to the Thames path and Pinkhill nature reserve to the north west with distant views of West Oxfordshire, including Eynsham Hall Park and edge of the Cotswold Hills.

Additional Evidence: The north facing slopes have wide views over the Thames Vale, including Farmoor reservoir, as well as views of rising ground including wooded Wytham Hill on the horizon to the north. There are panoramic views north from the B4017 which is nearby. Cumnor NP landscape Character assessment LCA 12 Para 12.5.2



*View 3 From Denman's Copse across Farmoor valley to Reservoir and Cotswold Hills.*

## View 4

Location: LCA4

Viewpoint: Beacon Hill

Direction of view: South

Content of View: Farmoor, Reservoir, Thames. An established high elevation view, Beacon Hill is identified as an Oxford View Cone..

Additional evidence: Views of arable fields surrounded by hillside woodland which provides an enclosing effect. The fields form an important setting for the adjacent Wytham Woods SSSI.



*View 4 Views from near summit of Beacon Hill*

## View 5

Location: LCA7

Viewpoint: Red House Farm

Direction of view: 5a North; 5b South

Content of View: The foreground is arable fields and red farm buildings against the blue sky. Mature hedgerows criss-cross the landscape. There are expansive views from the public footpath up towards Tumbledown (5b) and to the wooded backdrop of Wytham Woods which sweeps upwards to the north (5a).

Additional Evidence: View from Eynsham Road looking north east showing the woodland.



*View 5 Red House Farm looking north-east*



## View 6

Location: LCA10

Viewpoint: St Michael's Church Tower, Cumnor Village

Direction of view: 6a North, 6b South East, 6c South West

Content of View: From the top of the tower (open to the public on specified days) there are wide, expansive 360-degree views. Medieval village in foreground, to the north Wytham Woods and to the east The Hurst. Beyond the Important Views within the parish the Berkshire Downs can be seen to the south and Boars Hill to the South east.



*View 6a & c From St Michael's Church west over medieval village to Thames Valley and Cotswolds.*



*View 6b From St Michael's Church east over medieval village to Hurst Hill and Boars Hill.*



## View 7

Location: LCA9

Viewpoint: Leys Road by Long Leys Meadow

Direction of view: North

Content of View: From the public footpath across Long Leys Meadow, the view is of the Thames Valley and Farmoor Reservoir. It gently falls away to the north to capture Upper Whitley Farm and Whitley Brake. Foreground undulating arable fields, criss-crossed by mature hedgerows, background is the expanse of water of the reservoir.



*View 7 From footpath across Long Leys Meadow, showing Thames Valley and Farmoor Reservoir.*



## View 8

Location: LCA13

Viewpoint: Bradley Farm

Direction of view: East

Content of View: Farmland backed by Hurst Hill and Youlbury Woods. The area is open, with views across arable farmland, over low hedges. Ancient Woodland atop Hurst Hill is a noticeable backdrop to a large open landscape undisturbed by development.

Additional Evidence: There is an important view from Bradley Farm to The Hurst and the rural landscape with a wooded backdrop of the SSSI. Cumnor NP Landscape Character Assessment Para 14.5.4



*View 8 View from Bradley Farm to The Hurst & Youlbury Woods*

## View 9

Location: LCA13

Viewpoint: Western edge of Hurst Hill

Direction of view: South West to South East

Content of View: An important view across the parish showing the Vale of the White Horse to the Berkshire Downs in the distance. Henwood and Rockley in middle ground. A publicly accessible viewpoint.

Additional Information: The area is relatively open, with views across the arable farmland. This is a large-scale landscape with large open fields relatively undisturbed by development. Long open views are visible beyond the Parish towards Didcot and Berkshire Downs. There are occasional long distant views of the North Wessex Downs AONB on the horizon. Cumnor NP Landscape Character Assessment para 17.5.5 & 17.5.6



*View 9 (photo above and below) From Hurst Hill, showing Henwood and Rockley, and beyond the parish the Vale of White Horse and Berkshire Downs.*



## View 10

Location: LCA13

Viewpoint: Footpath from junction of Cumnor Hill and B4017

Direction of view: East

Content of View: Farmland backed by Youlbury Woods and The Hurst. An important view SE across to the Berkshire Downs.

Additional Evidence: Additional Information: The area is relatively open, with views across the arable farmland. This is a large scale landscape with large open fields relatively undisturbed by development. Long open views are visible from the Cumnor Bypass towards Didcot and Berkshire Downs. Cumnor NP Landscape Character Assessment para 17.5.5 & 17.5.6



*View 10 From footpath, panorama looking across to the Hurst and Youlbury.*



## View 11

Location: LCA12

Viewpoint: Footpath above Hids Copse and Shadwell Copse

Direction of view: North North East

Content of View: Hids Copse & Wytham Hill. With panoramic views from the south west of Hids Copse through to the north west towards Shadwell Copse and Eynsham the land falls away to the valley below then up to the ridge beyond dominated by Wytham Woods.

Additional Evidence: There are many views out to the open countryside beyond the suburb from the area, including many glimpses between the widely spaced buildings. Some views are expansive, whilst others are framed by trees.



*View 11 Dean Court Valley and Wytham Hill from Farm*

## View 12

Location: LCA14

Viewpoint: Cumnor (Millennium) Beacon

Direction of view: 12a South, 12b Northeast, 12c Northwest

Content of View: Outstanding views out across to Oxford. Site for the Cumnor Parish Beacon. 360° views across the Oxfordshire landscape. Some are partly limited due to Hurst Hill situated to the west, but there are still expansive long-distance views over Farmoor Reservoir.

One of the best examples of Important Views within the Parish where the view as seen by an observer also contains land in different parishes, different districts and, in this case, another county, Buckinghamshire. Visible to the NE are the hills beyond Bicester at Waddesdon, to the ESE the line of the Chilterns at Shotover in the Chilterns AONB, more than 25 kilometres distant, and to the WNW the hills to the north of Burford in the Cotswolds AONB.



*View 12a From Cumnor Beacon, looking Southwest over farmland to Hurst Hill*





*View 12b From Cumnor Beacon, looking Southeast over Thames Valley onto the Chilterns*



*View 12c From Cumnor Beacon, looking Northwest over Cumnor Hill to Farmoor & beyond the Parish to West Oxfordshire*

## View 13

Location: LCA13

Viewpoint: Oxford Greenbelt Way near Henwood Farm

Direction of view: North West

Content of View: Farmland backed by Hurst Hill. There are important views from the Oxford Green Belt Way towards the AONB. With Youlbury woods to the South East this view spans the millennium beacon to the NE, through the Hurst to the north with open pasture in the foreground through to the south west along with distant views of the spire of Cumnor Parish Church.

Additional Evidence: There are some important views from the Oxford Greenbelt Way towards the AONB where rows of trees and hedgerows screen the nearby Oxford Road. Cumnor NP Landscape Character Assessment Para 17.5.6



*View 13 From Oxford Greenbelt Way, open farmland backed by Hurst Hill*



## View 14

Location: LCA14

Viewpoint: Chilswell Farm

Direction of view: 14a North 14b South East

Content of View: Open farmland sloping down towards the Thames. Beyond the Parish are the adjacent Boars Hill to the south east and to the north east “the dreaming spires of Oxford”. Beyond Oxford, Headington and Shotover are visible, on the opposite, eastern, side of the Thames valley that contains Oxford.

Additional Evidence: From the southern point there are outstanding views out across to Oxford. Views include the ‘dreaming spires of Oxford’ as painted from Hinksey Hill by William Turner.



*View 14a “Dreaming Spires of Oxford” from Chilswell Farm*



*View 14b Chilswell Farm, showing Thames Valley in background*

## View 15

Location: LCA12

Viewpoint: Chawley Lane

Direction of view: North West

Content of View: Dean Court valley and Wytham Hill. Wide expansive views out to open countryside, gently sloping hills leading to the backdrop of Wytham Woods.

Additional Evidence: There are views for approximately 3 miles to Wytham Woods when tree cover is low. The line of trees act as a visual barrier to the A420. Cumnor NP Landscape Character Assessment para15.5.2



*View 15 From Chawley Lane, looking through Dean Court to Wytham Hill.*

## View 16

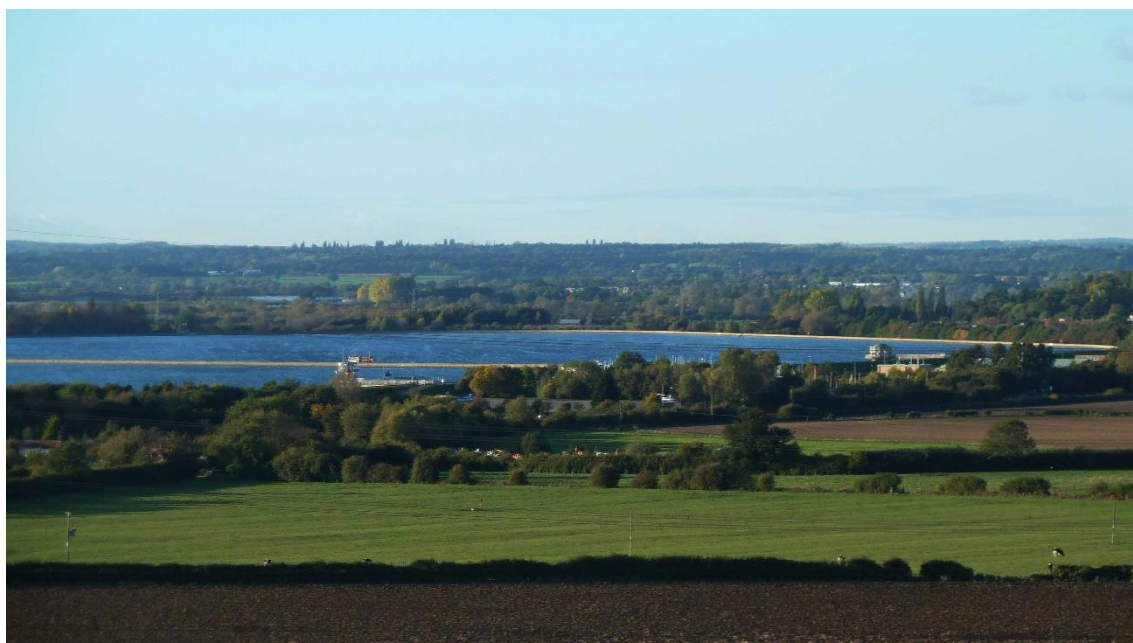
Location: LCA8

Viewpoint: Denman's Farm

Direction of view: NNW

Content of View: Farmoor farmland including reservoir.

Additional Evidence: The north facing slopes have wide views north over the Thames Vale, including Farmoor reservoir, as well views of rising ground including wooded Wytham Hill on the horizon to the north. In its recommendation to plan, manage and protect distinctiveness, actions should be taken to 'preserve the important panoramic views to Wytham Woods to the north'.



*View 16 From Denman's Farm across Farmoor valley to Reservoir.*



## View 17

Location: LCA2

Viewpoint: Hillock near Pinkhill Lock

Direction of view: SSE

Content of View: Views across the large waterbody of Farmoor Reservoir from the top of a nearby hill, close to the public footpath adjacent to the north western edge. Expansive views towards Tumbledown and The Hurst to the south.

Additional Evidence: There are views across the large waterbody of the reservoir from the top of the surrounding embankment, including from the public footpath adjacent to the south-western edge of the reservoir. The reservoir is a prominent feature in views from the elevated locations which overlook the area to the north, east and south. Cumnor NP landscape Character assessment Para 6.5.2



*View 17 From near Pinkhill across Farmoor Reservoir to Tumbledown.*

## View 18

Location: LCA2

Viewpoint: Hillock near Pinkhill Lock

Direction of view: Northwest

Content of View: A kinetic view to – and along - the River Thames, Pinkhill lock and weir, and Oxford Cruisers boatyard,. Views to the NNE to Wytham Woods. Beyond the parish boundary an observer also sees into West Oxfordshire

Additional Evidence: The parish boundary crosses the Thames twice in this area returning to the west bank in photo below. Cumnor NP landscape Character assessment Para 6.5.2



*View 18 From near Pinkhill along East bank of Thames from Pinkhill lock to boatyard*



## View 19

Location: LCA2

Viewpoint: Pinkhill Nature Reserve from Farmoor Reservoir embankment & Thames-side footpaths

Direction of view: South West to North West

Views of Pinkhill lock, river moorings and weir also.

Additional Evidence: The success of Pinkhill Nature Reserve has served as a model for others, including the adjacent Shrike Meadow to the south – see Important View 20a. Cumnor NP landscape Character assessment Para 6.5.2



*View 19 Pinkhill Meadow Nature Reserve from surrounding footpaths*

## View 20

Location: LCA2

Viewpoint: Paths adjacent to Shrike Meadow and Buckthorn Meadow Nature Reserves & Farmoor reservoir

Direction of view: 20a West, 20b East

Content of View:

20a looking West: From the raised embankment of the reservoir a view that changes as you move (kinetic) along the public footpaths. Grassed slopes of the reservoir blend into Shrike Meadow, Buckthorn Meadow and the willow tree lined Thames-side footpath.

Turning around there are uninterrupted views of:

20b looking East: across Farmoor reservoir and further along the valley between Cumnor Hill and Wytham Woods towards Oxford.

Additional Evidence: Shrike Meadow showcases extensive habitat development and sympathetic land management by the Environment Agency, Thames Water and the Freshwater Habitats Trust, building on the success of Pinkhill Meadow

There are views across the large waterbody of the reservoir from the top of the surrounding embankment, including from the public footpaths adjacent to the western edge of the reservoir. The reservoir is a prominent feature in views from the elevated locations which overlook the area to the north, east and south. Cumnor NP landscape Character assessment Para 6.5.2





*View 20a SW to NW from footpaths.*



*View 20b SE to NE From grassed banks of reservoir*



## View 21

Location: LCA2

Viewpoint: Thames side path near Lower Whitley Farm

Direction of view: South & South East

Content of View: A kinetic view along the River Thames from the Thames path

Additional Evidence: Extensive river and river bank views inside the Parish boundary opening up to long distance SE views across open pasture to the woods climbing from Bablock Hythe past the Physic Well. Cumnor NP landscape Character assessment Para 6.5.2



*View 21 View from Thames side path view looking South & South East*

## View 22

Location: LCA2

Viewpoint: Whitley Copse and Physic Well from elevated footpath adjacent to SW perimeter of Farmoor reservoir

Direction of view: South West

Content of View: From beehives in the foreground to the woods rising from Bablock Hythe in the distance this kinetic view across agricultural land changes as you move along the public footpath.



*View 22 From elevated footpath looking south west*



## View 23

Location: LCA6

Viewpoint: Singing Way path through Wytham Woods near Tilbury Farm

Direction of view: South

Content of View: Foreground: fields of Tilbury Farm, middle ground the Dean Court valley, backed by the wooded slopes of Cumnor Hill. The view changes as one walks along the Singing Way, but always Dean Court, Cumnor Hill and eventually Farmoor valley can be glimpsed through the trees.

Additional Evidence: The contours of the land also allow views to the north. Large fields across the LCA provide a sense of exposure and openness. There are rolling hills juxtaposed against the vertical tree line.



*View 23 Tilbury Farm, Dean Court valley and Cumnor Hill from the Singing Way, Wytham Woods.*



## View 24

Location: LCA8

Viewpoint: Denman's Farm

Direction of view: West

Content of View: This is an expansive view from an elevated position, the foreground is dominated by rolling arable fields, with the reservoir in the distance. A much-valued view, and a perfect spot for bird-watching.

Additional Evidence: The north facing slopes have wide views north over the Thames Vale, including Farmoor reservoir, as well views of rising ground including wooded Wytham Hill on the horizon to the north. There are panoramic views north from the B4017. In its recommendation to plan manage and protect distinctiveness the VoWHDC Landscape Character assessment states actions should be taken to 'preserve the important panoramic views to Wytham Woods to the north'.



*View 24 Panorama of Denman's Farm towards Farmoor Reservoir*

## View 25

Location: LCA13

Viewpoint: The Hurst (Hurst Hill) SE Corner

Direction of view: South

Content of View: Foreground: fields of Bradley Farm, with Youlbury Woods to left. An important view across to the Berkshire Downs, with sweeping views across to both Henwood and Cumnor Village from this publicly accessible viewpoint. During periods of dry weather, evidence of iron age settlements can be seen from this viewpoint. The old way-marker line of oak trees in a strong feature in this view and stretches out along the old Roman Swindon-Oxford road.

Additional Evidence: The area is relatively open, with views across the arable farmland. This is a large-scale landscape with large open fields undisturbed by development. Long open views beyond the parish extend towards Didcot and the Berkshire Downs. There are occasional long distant views of the North Wessex Downs AONB on the horizon. Cumnor NP Landscape Character Assessment para 17.5.5 & 17.5.6



*View 25 Youlbury Woods, Henwood and Berkshire Downs seen across land of Bradley Farm.*

## View 26

Location: LCA13

Viewpoint: Oxford Greenbelt Way, Henwood Farm

Direction of view: North

Content of View: Foreground: Long open views across Bradley Farm's arable land and pasture, with Hurst Hill (Cumnor Hurst) in background. Glimpses of Cumnor Hill to its junction with the B4017.

Additional Information: One of many important views from the Oxford Green Beltway towards the AONB. Cumnor NP Landscape Character Assessment para 17.5.5 & 17.5.6



*View 26 Hurst Hill seen across land of Bradley Farm from Greenbelt Way.*



## View 27

Location: LCA14

Viewpoint: Chilswell Path near Powder Hill Copse

Direction of view: Northeast

Content of View: This is an important view across farmland in the Parish. Cherished for the views within the Parish it also gives extensive views towards to the “dreaming spires of Oxford”, backed by Beckley and Shotover Hills. This view is particularly sensitive to any development that might impinge on this iconic view.

Additional Evidence: Views include the 'dreaming spires of Oxford' as painted from Hinksey Hill by William Turner and referenced by Matthew Arnold in his poem “Thyrsis”. Cumnor NP Landscape Character Assessment Para 18.5.3



*View 27 Dreaming spires of Oxford see from Chilswell Path near Powder Hill Copse.*

## View 28

Location: LCA14

Viewpoint: Limekiln Copse

Direction of view: Northeast

Content of View: A lower elevation version of 29 with a closer view of Chilswell Farm. Another example of a kinetic Important View within the Parish where a short distance away 'the dreaming spires' that lie outside the Parish are revealed in the valley, as the inset below shows.



*View 28 Limekiln*

## View 29

Location: LCA14

Viewpoint: Chilswell Farm Cottages

Direction of view: North

Content of View: A steeply sloping expansive view across the eastern edge of the Parish. In total this view for any observer offers an Important View within the parish of more than a mile of farmland framing distant views beyond the parish of the “dreaming spires of Oxford”. With Boars Hill and Foxcombe to the rear this elevated view from north west to north east looks down across open farmland to the City of Oxford below, including views of Headington around westwards to Port Meadow, described by Gerard Manley Hopkins as a landscape of “meadow and river and wind-wandering weed-winding bank”.

Additional Evidence: From the southern point there are outstanding views out across to Oxford. Cumnor NP Landscape Character Assessment Para 18.5.3



*View 29 Dreaming spires of Oxford from farmland close to Chilswell Farm Cottages.*



## View 30

Location: LCA13

Viewpoint: Cumnor Hill Top

Direction of view: South

Content of View: From WSW to ESE the Important View in the foreground includes the wooded Hurst, open farmland, farm buildings, Henwood and the edge of Cumnor village. This near view is framed by a long-distance view of up to 20 miles spanning the Berkshire Downs above Harwell and Wantage and further westwards.



*View 30 From Cumnor Hill Top towards The Hurst, Boars Hill, and Henwood. Beyond are Wantage, Harwell and the Berkshire Downs*

,

## View 31

Location: LCA8

Viewpoint: Smith Hill Copse

Direction of view: Northwest

Content of View: From a northerly view down across Farmoor and up to the western edge of Wytham Woods, with Swinford in the distance, this view is of open farmland and mature stands of trees in an arc through to the south west towards the old ford at Bablock Hythe and the historic drovers road from the ford up to Leys Road.



*View 31 Smith Hill Copse*

- END -