



# Dean Moor Solar Farm

## Environmental Statement: Chapter 4 – Figure 4.3 Dean Moor ZTV Combined on behalf of **FVS Dean Moor Limited**

---

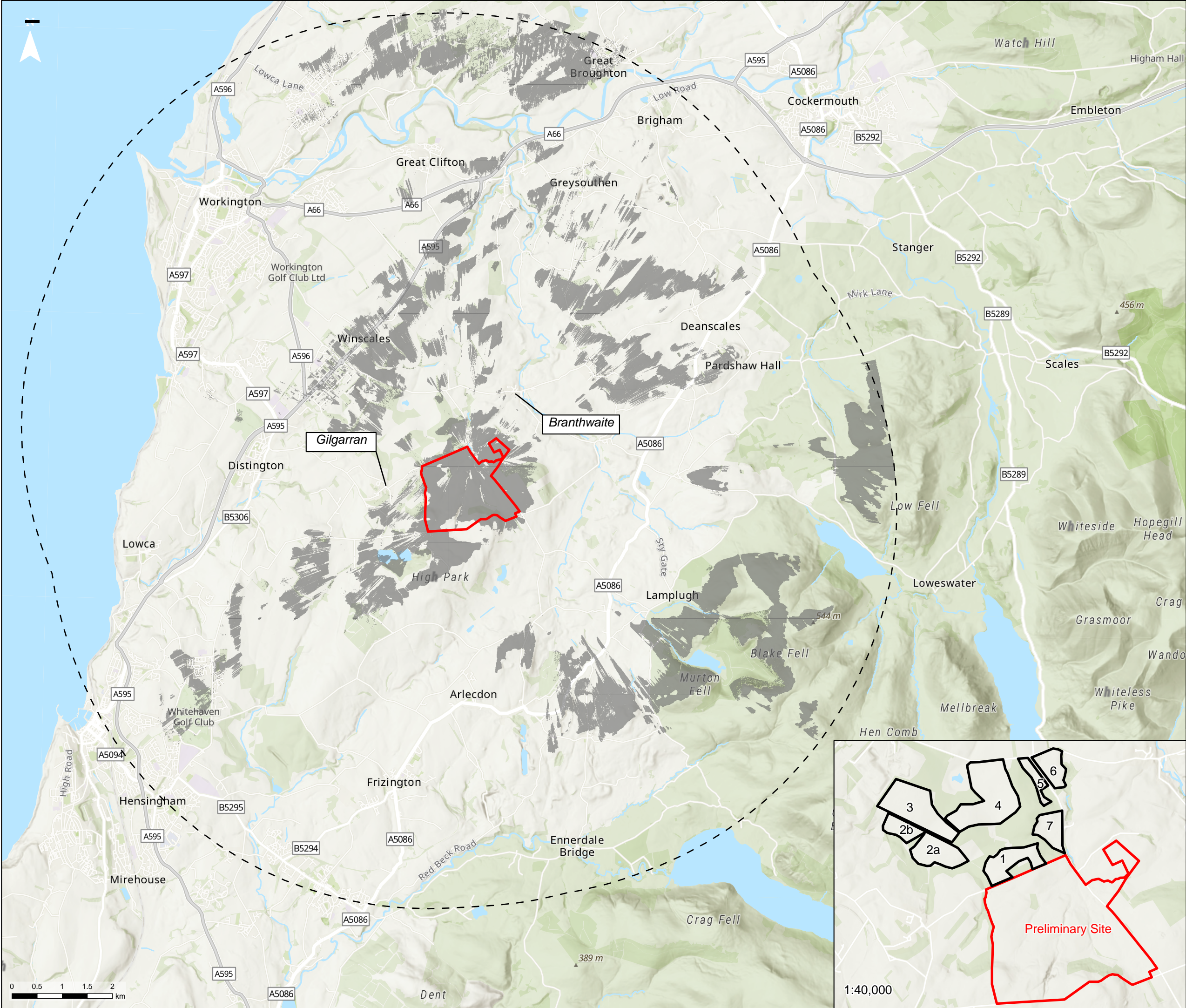
March 2025  
Prepared by: Stantec UK Ltd  
PINS Ref: EN010155  
Document Ref: 6.2  
Revision: 1



Firma Energy

 **ib vogt**





**Legend**

- Preliminary Site Boundary
- 7.5km Study Area
- Zone of Theoretical Visibility:**
- Visibility of the Preliminary Site

**NOTES:**



1) This ZTV was run on a Digital Surface Model using National LiDAR Programme data, 1m resolution grid, 2019

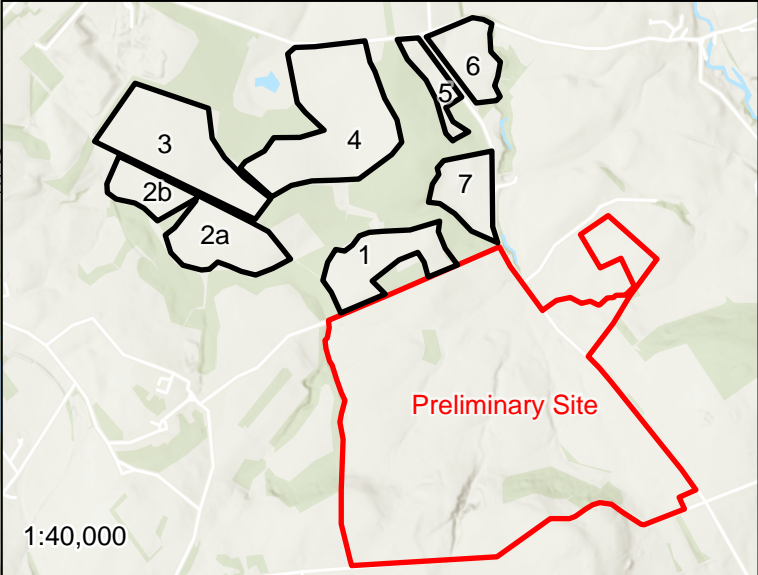
2) The ZTV was created using Esri ArcGIS Pro version 3.0.2 Spatial Analyst tool.

3) The ZTV illustrates the area of theoretical visibility of the Site, created from 6 observer points within the Site layout clipped to a 7.5km study area.

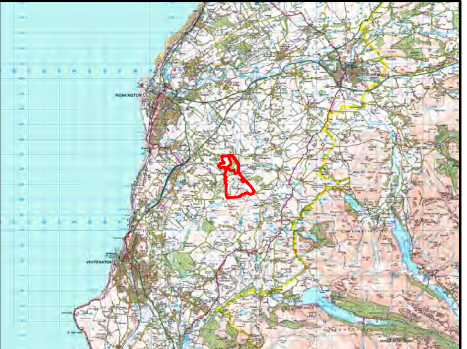
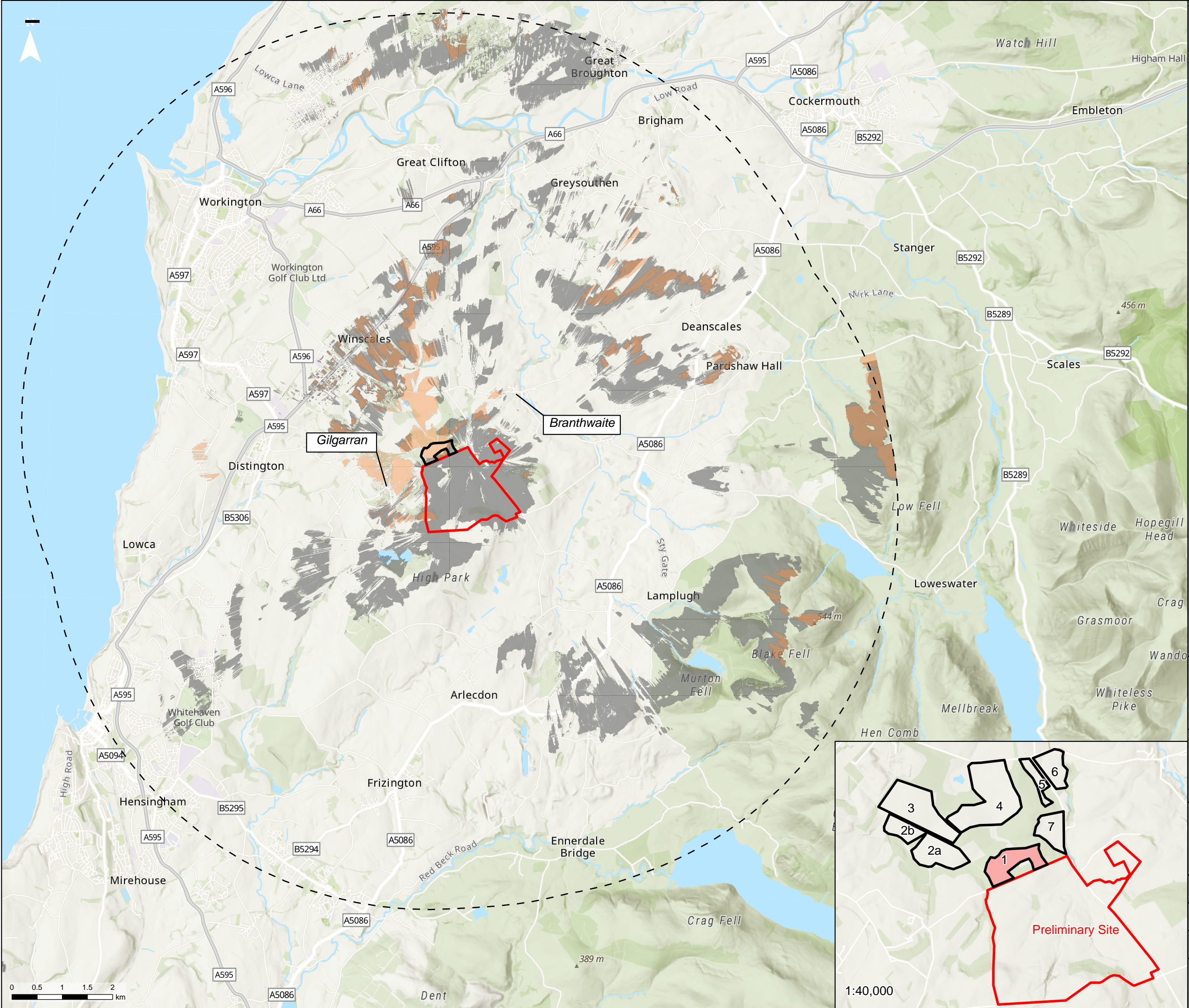
4) The ZTV analysis remains only as a tool in the visual appraisal of the project. Its accuracy is limited to the digital information that it has been based upon and the algorithm used in its calculation.

Esri, Intermap, NASA, NGA, USGS, Esri UK, Esri, TomTom, Garmin, Foursquare, GeoTechnologies, Inc, METI/NASA, USGS® Crown copyright and database rights [2024]  
Ordnance Survey AC0000808122

Project Title	
	
Client	
FVS Dean Moor Limited	
Title	
Preliminary Zone of Theoretical Visibility Analysis: Preliminary Site	
Scale: 1: 70,000 @ A3	Date: 22/01/2025
Drawn: TL	Checked: NS
Figure: 4.3	Rev: A
	







**Legend**

- Preliminary Site Boundary
- 7.5km Study Area
- Additional Area Boundary: Area 1

**Zone of Theoretical Visibility:**

- Visibility of the Preliminary Site
- Visibility of Additional Area

**NOTES:**



1) This ZTV was run on a Digital Surface Model using National LiDAR Programme data, 1m resolution grid, 2019.

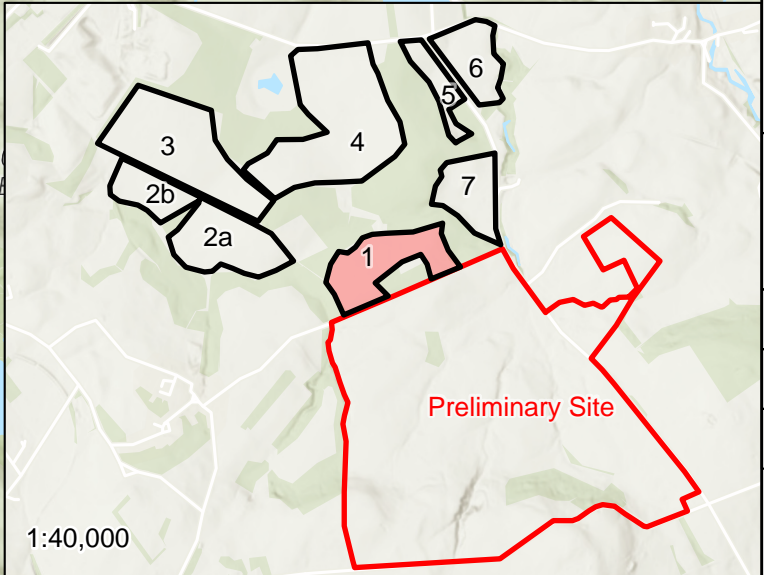
2) The ZTV was created using Esri ArcGIS Pro version 3.0.2 Spatial Analyst tool.

3) The ZTV illustrates the area of theoretical visibility of the Site, created from 6 observer points within the Site layout clipped to a 7.5km study area.

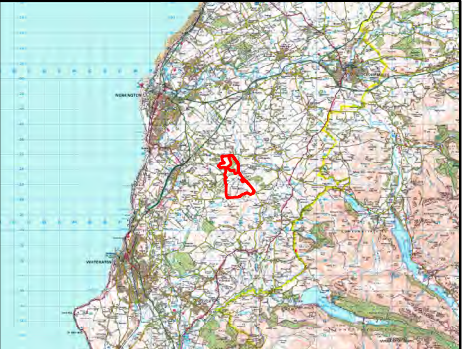
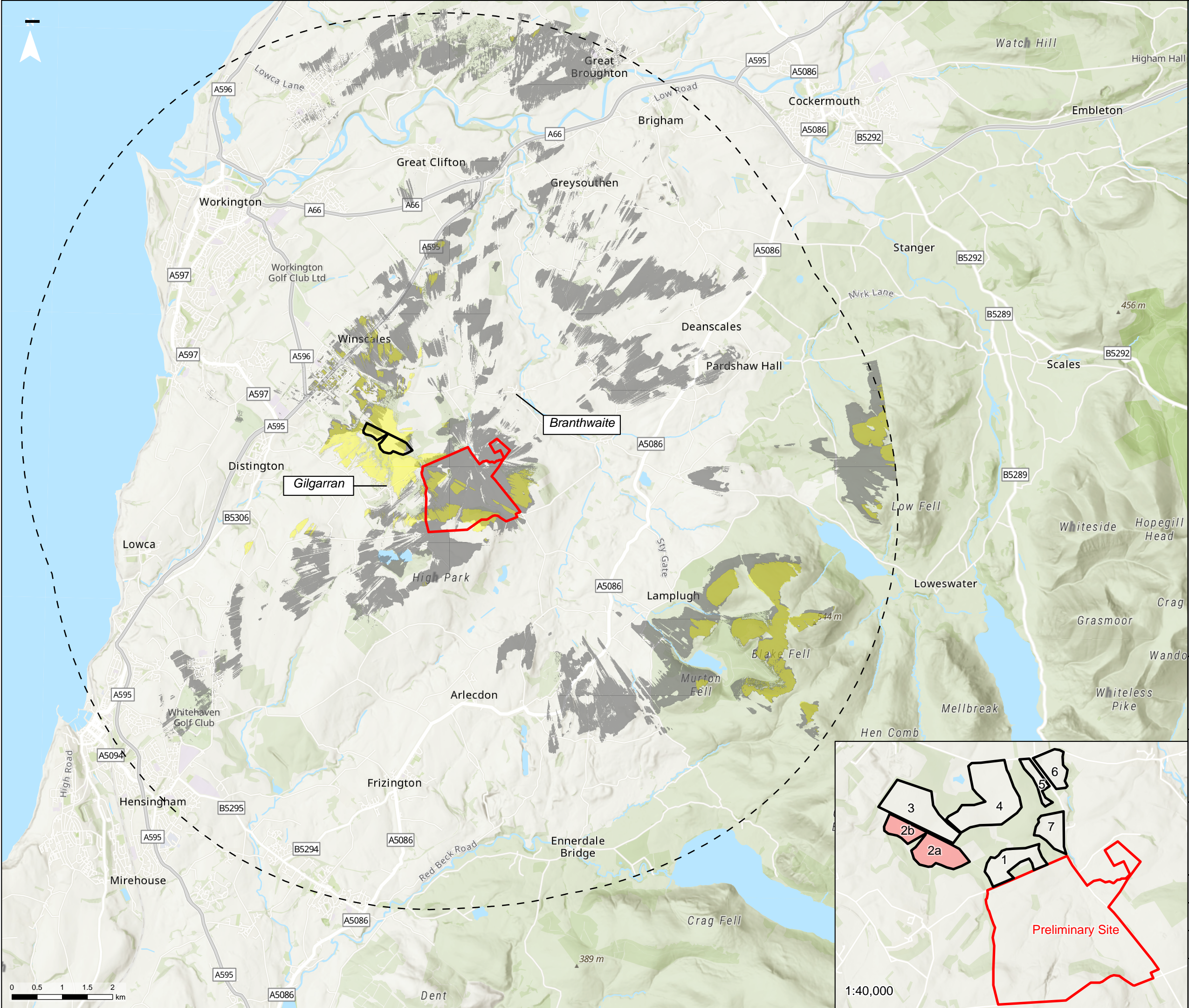
4) The ZTV analysis remains only as a tool in the visual appraisal of the project. Its accuracy is limited to the digital information that it has been based upon and the algorithm used in its calculation.

Esri, Intermap, NASA, NGA, USGS, Esri UK, Esri, TomTom, Garmin, Foursquare, GeoTechnologies, Inc, METI/NASA, USGS© Crown copyright and database rights [2024] Ordnance Survey AC0000808122

Project Title	
	
Client	
FVS Dean Moor Limited	
Title	
Preliminary Zone of Theoretical Visibility Analysis: Area 1	
Scale: 1: 70,000 @ A3	Date: 22/01/2025
Drawn: TL	Checked: NS
Figure: 4.3a	Rev: A
	







**Legend**

- Preliminary Site Boundary
- 7.5km Study Area
- Additional Area Boundary: Area 2

**Zone of Theoretical Visibility:**

- Visibility of the Preliminary Site
- Visibility of Additional Area

**NOTES:**



1) This ZTV was run on a Digital Surface Model using National LiDAR Programme data, 1m resolution grid, 2019.

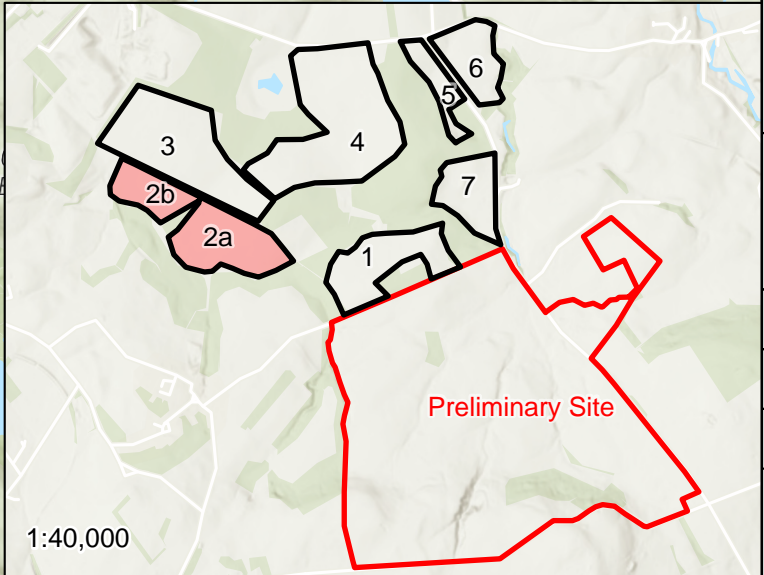
2) The ZTV was created using Esri ArcGIS Pro version 3.0.2 Spatial Analyst tool.

3) The ZTV illustrates the area of theoretical visibility of the Site, created from 6 observer points within the Site layout clipped to a 7.5km study area.

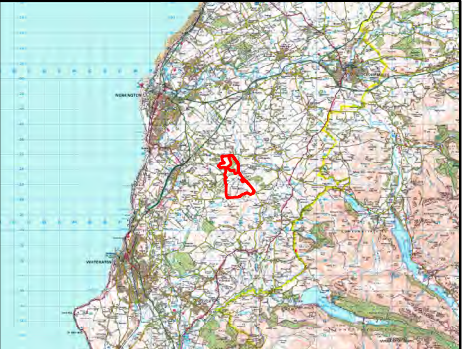
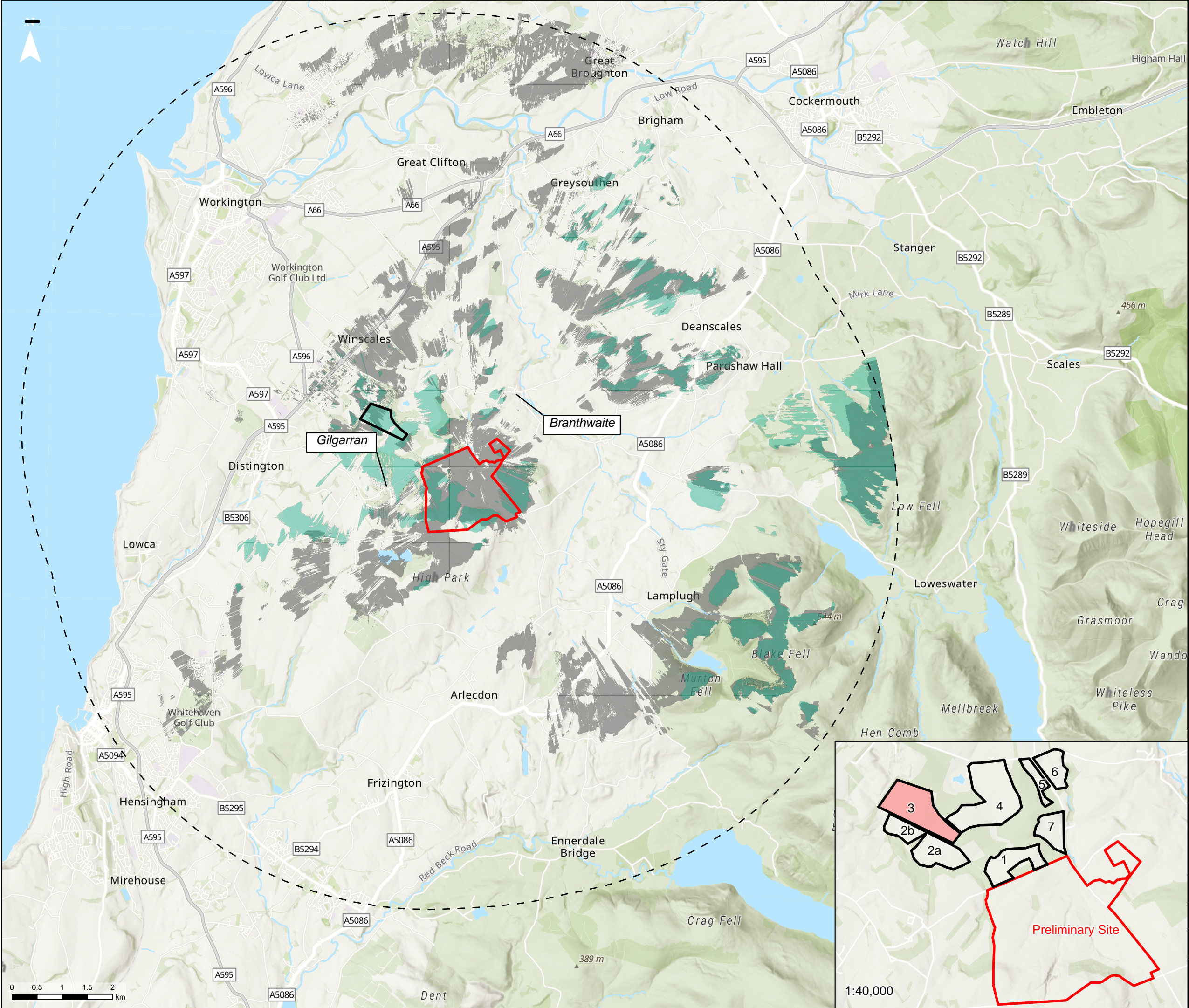
4) The ZTV analysis remains only as a tool in the visual appraisal of the project. Its accuracy is limited to the digital information that it has been based upon and the algorithm used in its calculation.

Esri, Intermap, NASA, NGA, USGS, Esri UK, Esri, TomTom, Garmin, Foursquare, GeoTechnologies, Inc, METI/NASA, USGS® Crown copyright and database rights [2024]  
Ordnance Survey AC0000808122

Project Title		
		
Client		
FVS Dean Moor Limited		
Title		
Preliminary Zone of Theoretical Visibility Analysis: Area 2		
Scale: 1: 70,000 @ A3	Date: 22/01/2025	
Drawn: TL	Checked: NS	
Figure: 4.3b		Rev: A
 <b>Stantec</b>		







**Legend**

- Preliminary Site Boundary
- 7.5km Study Area
- Additional Area Boundary: Area 3

**Zone of Theoretical Visibility:**

- Visibility of the Preliminary Site
- Visibility of Additional Area

**NOTES:**



1) This ZTV was run on a Digital Surface Model using National LiDAR Programme data, 1m resolution grid, 2019.

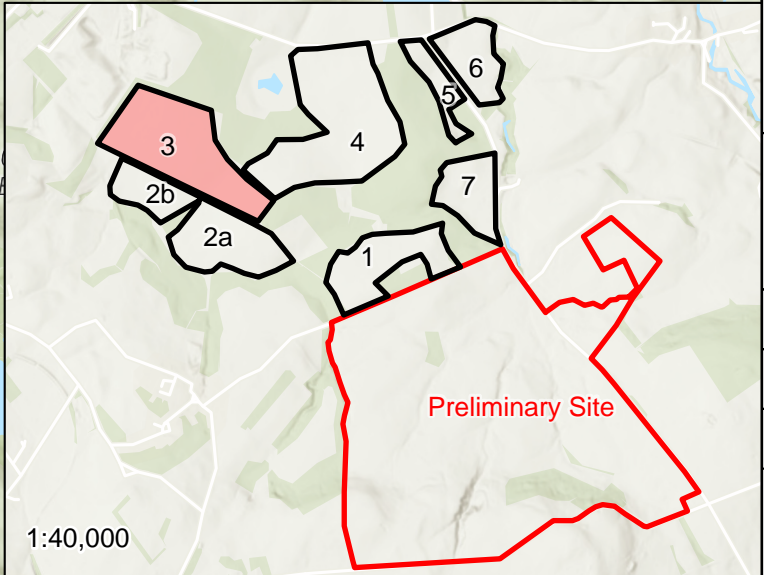
2) The ZTV was created using Esri ArcGIS Pro version 3.0.2 Spatial Analyst tool.

3) The ZTV illustrates the area of theoretical visibility of the Site, created from 6 observer points within the Site layout clipped to a 7.5km study area.

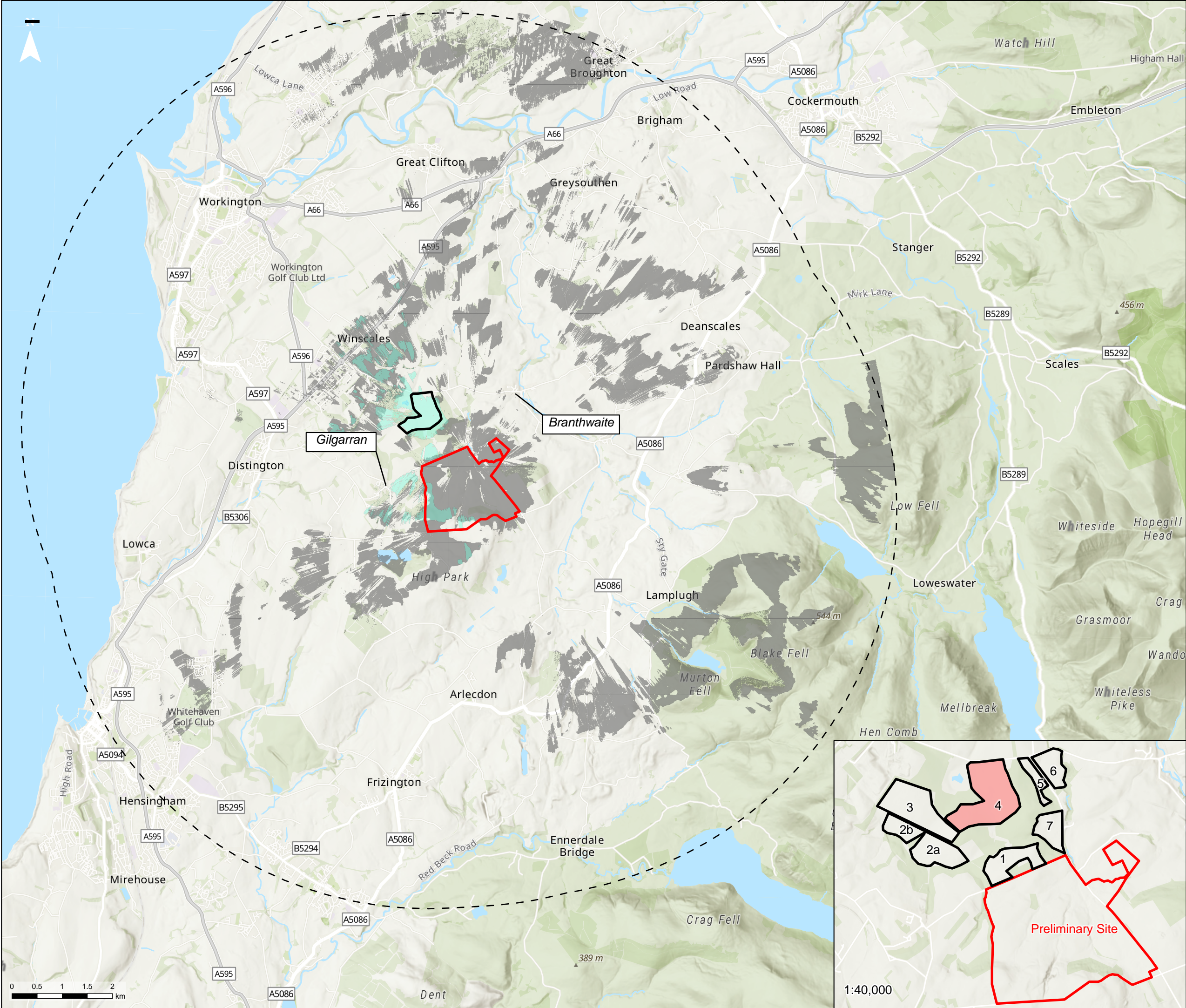
4) The ZTV analysis remains only as a tool in the visual appraisal of the project. Its accuracy is limited to the digital information that it has been based upon and the algorithm used in its calculation.

Esri, Intermap, NASA, NGA, USGS, Esri UK, Esri, TomTom, Garmin, Foursquare, GeoTechnologies, Inc, METI/NASA, USGS© Crown copyright and database rights [2024] Ordnance Survey AC0000808122

Project Title	
	
Client	
FVS Dean Moor Limited	
Title	
Preliminary Zone of Theoretical Visibility Analysis: Area 3	
Scale: 1: 70,000 @ A3	Date: 22/01/2025
Drawn: TL	Checked: NS
Figure: 4.3c	Rev: A
	







**Legend**

- Preliminary Site Boundary
- 7.5km Study Area
- Additional Area Boundary: Area 4

**Zone of Theoretical Visibility:**

- Visibility of the Preliminary Site
- Visibility of Additional Area

**NOTES:**



1) This ZTV was run on a Digital Surface Model using National LiDAR Programme data, 1m resolution grid, 2019.

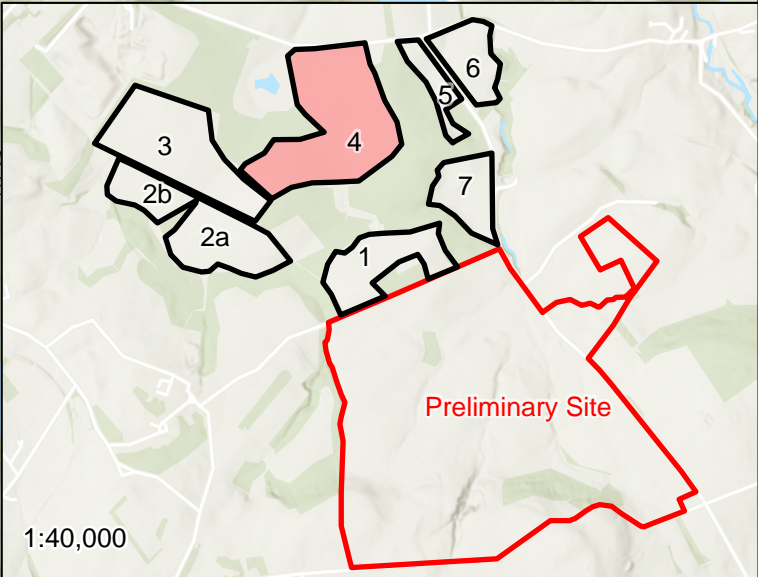
2) The ZTV was created using Esri ArcGIS Pro version 3.0.2 Spatial Analyst tool.

3) The ZTV illustrates the area of theoretical visibility of the Site, created from 6 observer points within the Site layout clipped to a 7.5km study area.

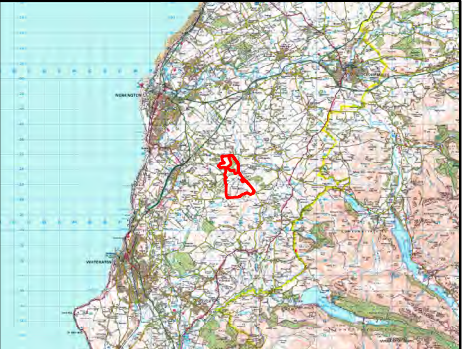
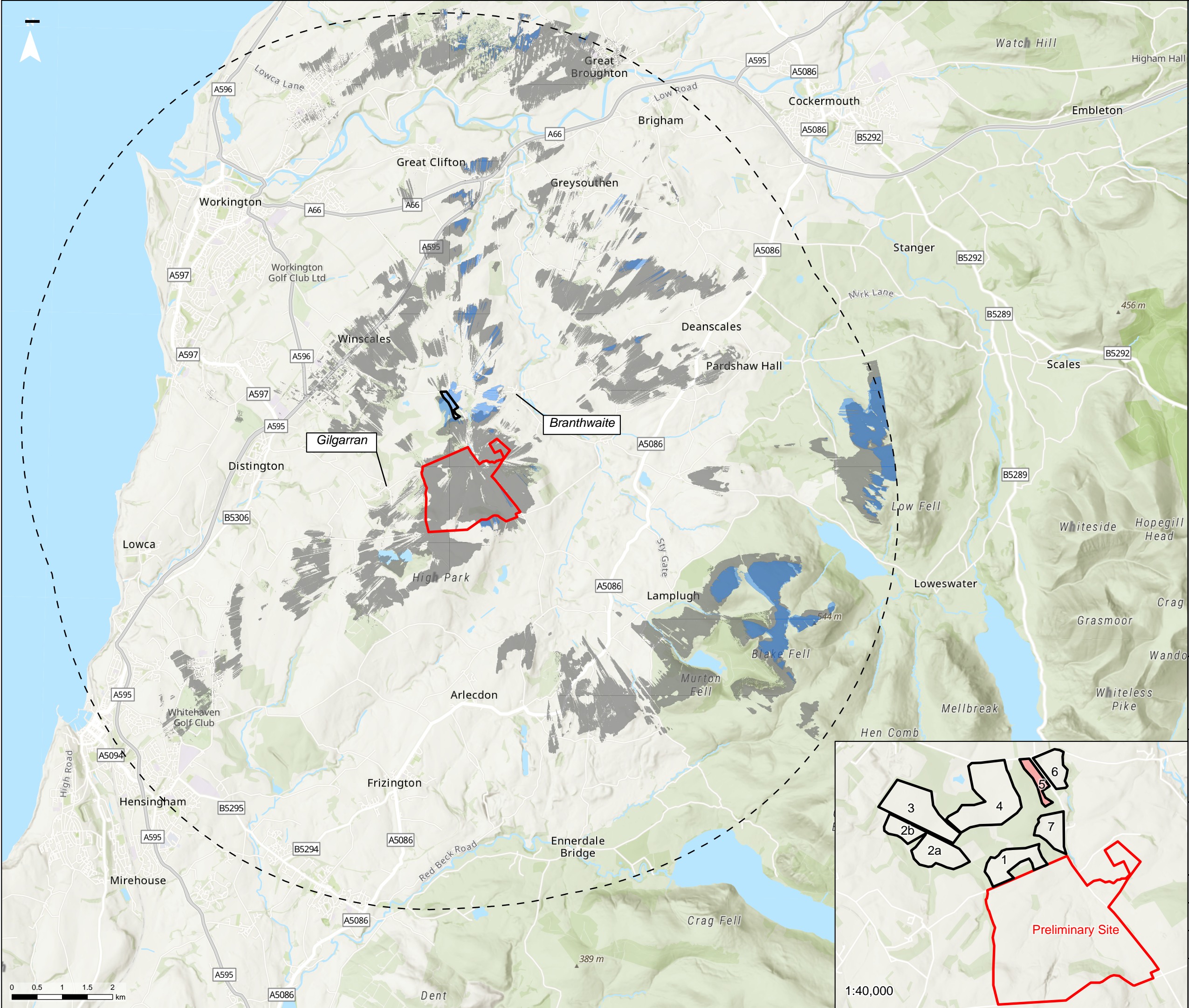
4) The ZTV analysis remains only as a tool in the visual appraisal of the project. Its accuracy is limited to the digital information that it has been based upon and the algorithm used in its calculation.

Esri, Intermap, NASA, NGA, USGS, Esri UK, Esri, TomTom, Garmin, Foursquare, GeoTechnologies, Inc, METI/NASA, USGS© Crown copyright and database rights [2024]  
Ordnance Survey AC0000808122

Project Title	
	
Client	
FVS Dean Moor Limited	
Title	
Preliminary Zone of Theoretical Visibility Analysis: Area 4	
Scale: 1: 70,000 @ A3	Date: 22/01/2025
Drawn: TL	Checked: NS
Figure: 4.3d	Rev: A
	







**Legend**

- Preliminary Site Boundary
- 7.5km Study Area
- Additional Area Boundary: Area 5

**Zone of Theoretical Visibility:**

- Visibility of the Preliminary Site
- Visibility of Additional Area

**NOTES:**



1) This ZTV was run on a Digital Surface Model using National LiDAR Programme data, 1m resolution grid, 2019.

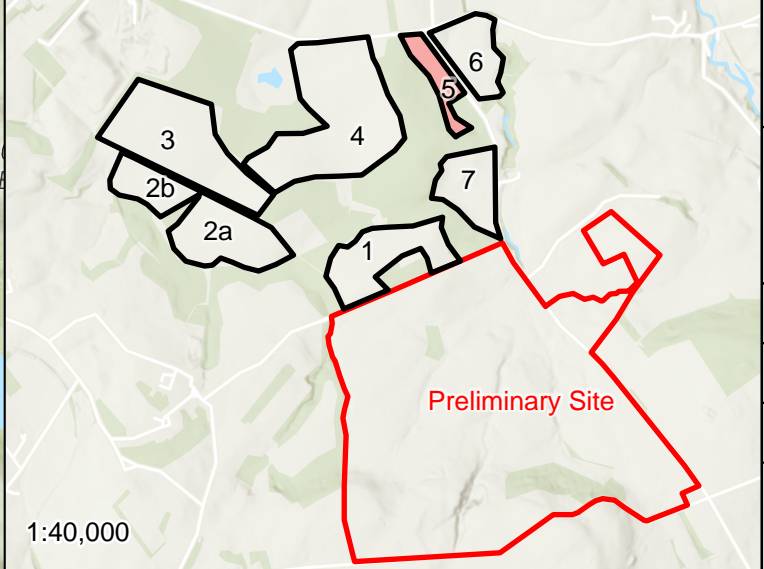
2) The ZTV was created using Esri ArcGIS Pro version 3.0.2 Spatial Analyst tool.

3) The ZTV illustrates the area of theoretical visibility of the Site, created from 6 observer points within the Site layout clipped to a 7.5km study area.

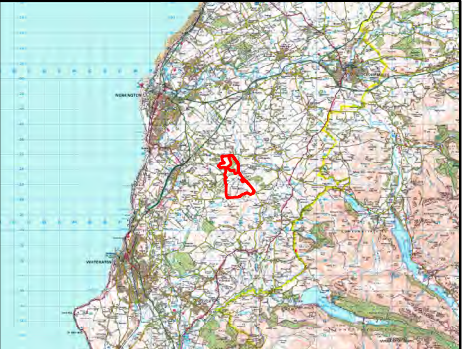
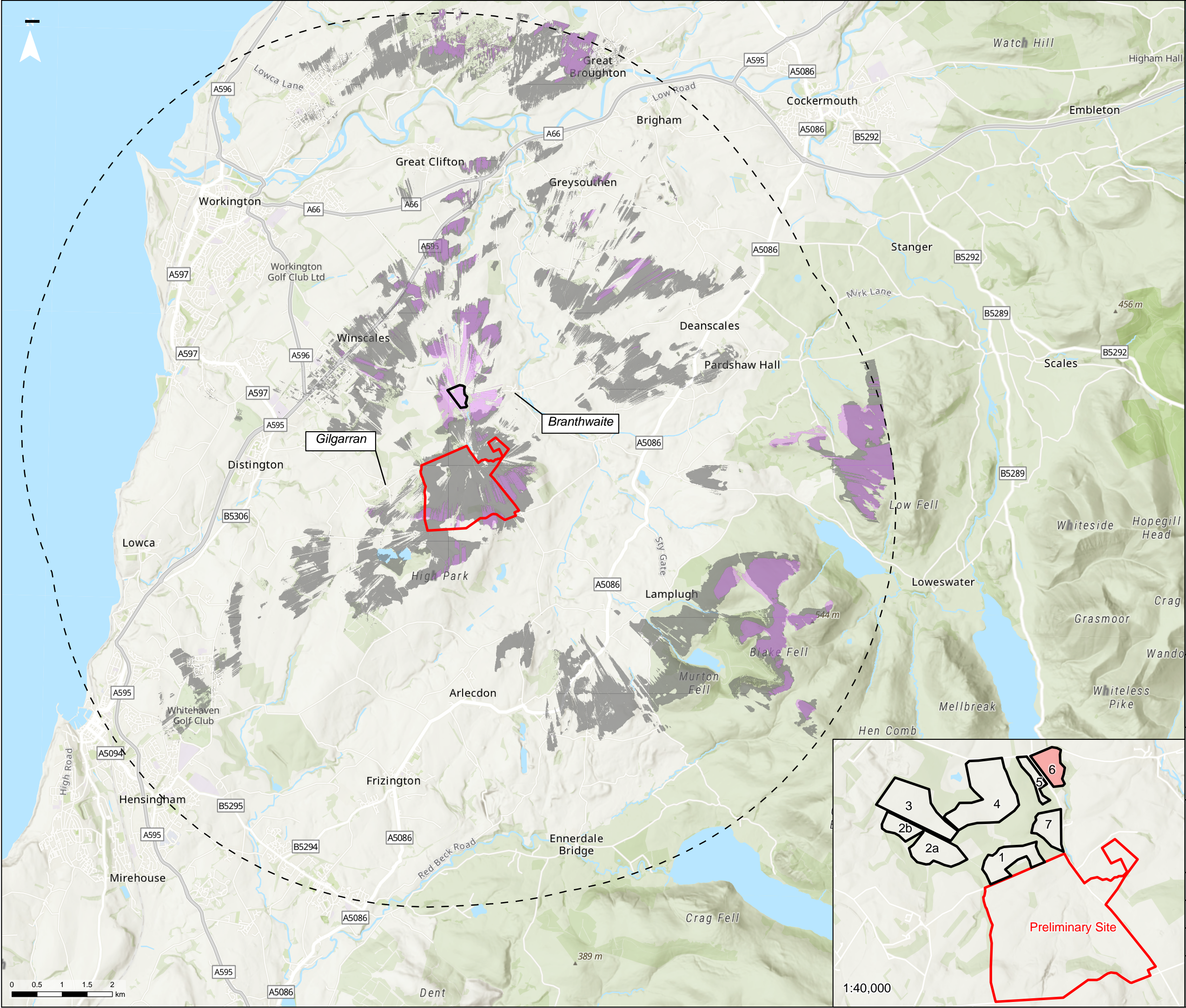
4) The ZTV analysis remains only as a tool in the visual appraisal of the project. Its accuracy is limited to the digital information that it has been based upon and the algorithm used in its calculation.

Esri, Intermap, NASA, NGA, USGS, Esri UK, Esri, TomTom, Garmin, Foursquare, GeoTechnologies, Inc, METI/NASA, USGS© Crown copyright and database rights [2024]  
Ordnance Survey AC0000808122

Project Title	
	
Client	
FVS Dean Moor Limited	
Title	
Preliminary Zone of Theoretical Visibility Analysis: Area 5	
Scale: 1: 70,000 @ A3	Date: 22/01/2025
Drawn: TL	Checked: NS
Figure: 4.3e	Rev: A
	







**Legend**

- Preliminary Site Boundary
- 7.5km Study Area
- Additional Area Boundary: Area 6

**Zone of Theoretical Visibility:**

- Visibility of the Preliminary Site
- Visibility of Additional Area

**NOTES:**



1) This ZTV was run on a Digital Surface Model using National LiDAR Programme data, 1m resolution grid, 2019.

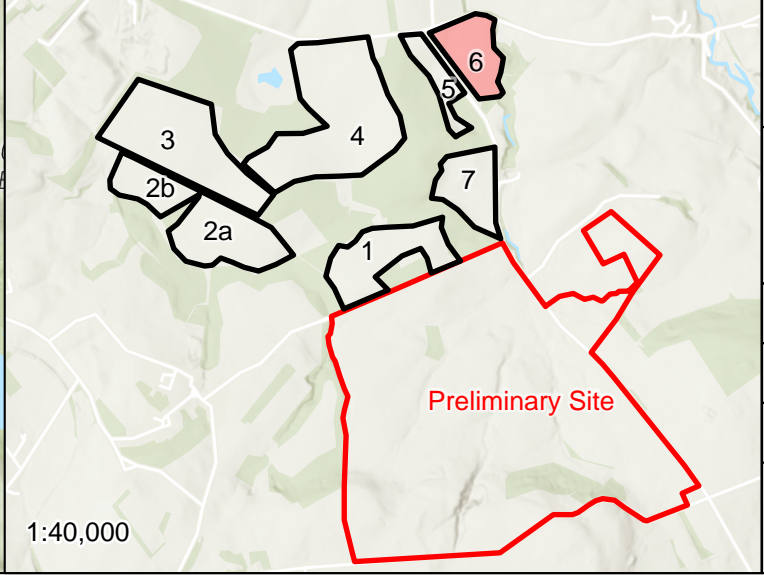
2) The ZTV was created using Esri ArcGIS Pro version 3.0.2 Spatial Analyst tool.

3) The ZTV illustrates the area of theoretical visibility of the Site, created from 6 observer points within the Site layout clipped to a 7.5km study area.

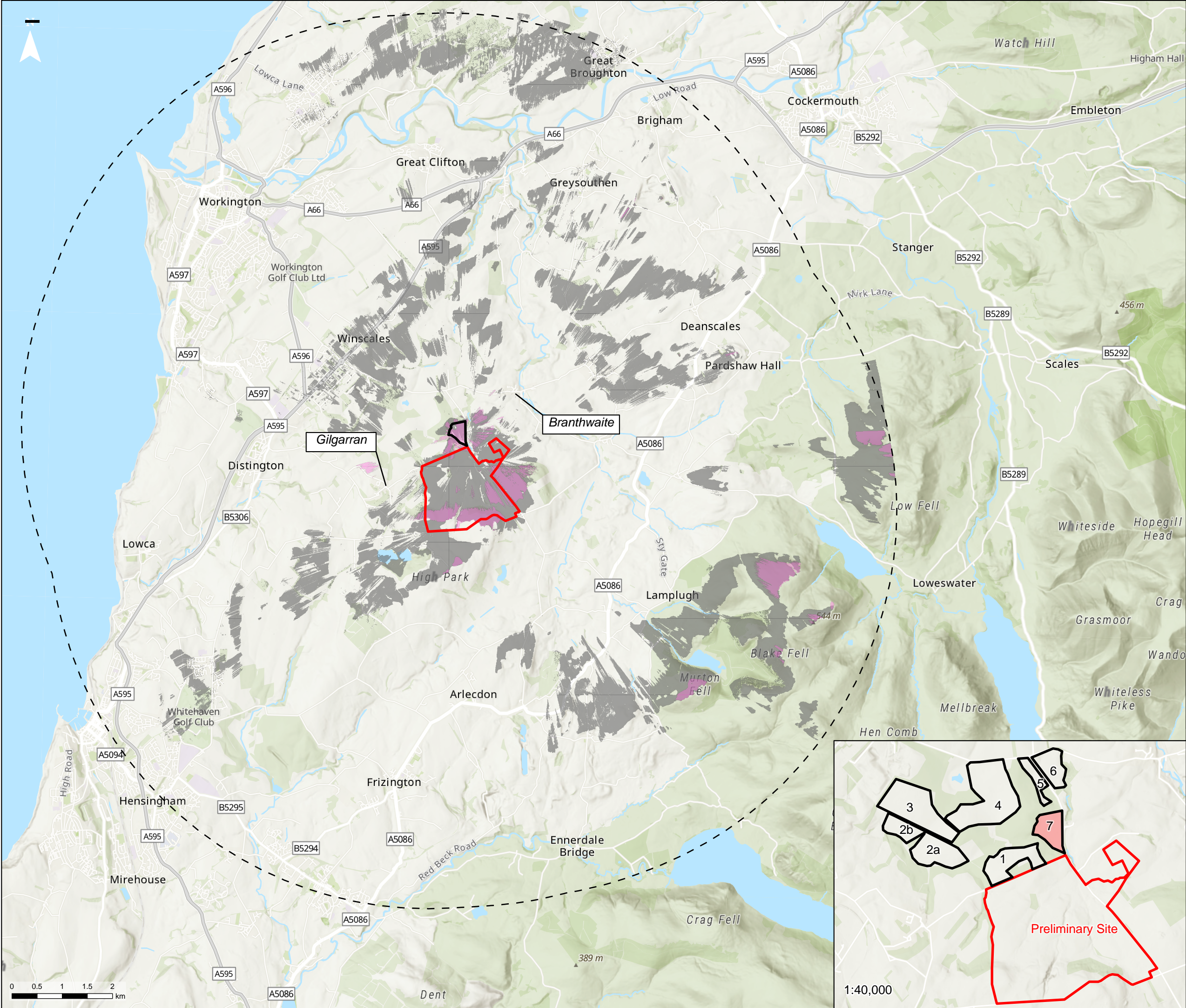
4) The ZTV analysis remains only as a tool in the visual appraisal of the project. Its accuracy is limited to the digital information that it has been based upon and the algorithm used in its calculation.

Esri, Intermap, NASA, NGA, USGS, Esri UK, Esri, TomTom, Garmin, Foursquare, GeoTechnologies, Inc, METI/NASA, USGS© Crown copyright and database rights [2024]  
Ordnance Survey AC0000808122

Project Title	
	
Client	
FVS Dean Moor Limited	
Title	
Preliminary Zone of Theoretical Visibility Analysis: Area 6	
Scale: 1: 70,000 @ A3	Date: 22/01/2025
Drawn: TL	Checked: NS
Figure: 4.3f	Rev: A
	







**Legend**

- Preliminary Site Boundary
- 7.5km Study Area
- Additional Area Boundary: Area 7

**Zone of Theoretical Visibility:**

- Visibility of the Preliminary Site
- Visibility of Additional Area

**NOTES:**


1) This ZTV was run on a Digital Surface Model using National LiDAR Programme data, 1m resolution grid, 2019.

2) The ZTV was created using Esri ArcGIS Pro version 3.0.2 Spatial Analyst tool.

3) The ZTV illustrates the area of theoretical visibility of the Site, created from 6 observer points within the Site layout clipped to a 7.5km study area.

4) The ZTV analysis remains only as a tool in the visual appraisal of the project. Its accuracy is limited to the digital information that it has been based upon and the algorithm used in its calculation.

Esri, Intermap, NASA, NGA, USGS, Esri UK, Esri, TomTom, Garmin, Foursquare, GeoTechnologies, Inc, METI/NASA, USGS® Crown copyright and database rights [2024]  
Ordnance Survey AC0000808122

Project Title	
	
Client	
FVS Dean Moor Limited	
Title	
Preliminary Zone of Theoretical Visibility Analysis: Area 7	
Scale: 1: 70,000 @ A3	Date: 22/01/2025
Drawn: TL	Checked: NS
Figure: 4.3g	Rev: A
