



# Dean Moor Solar Farm

## Environmental Statement: Chapter 7 – Figure 7.2b Published Landscape Character (LDNP) on behalf of **FVS Dean Moor Limited**

---

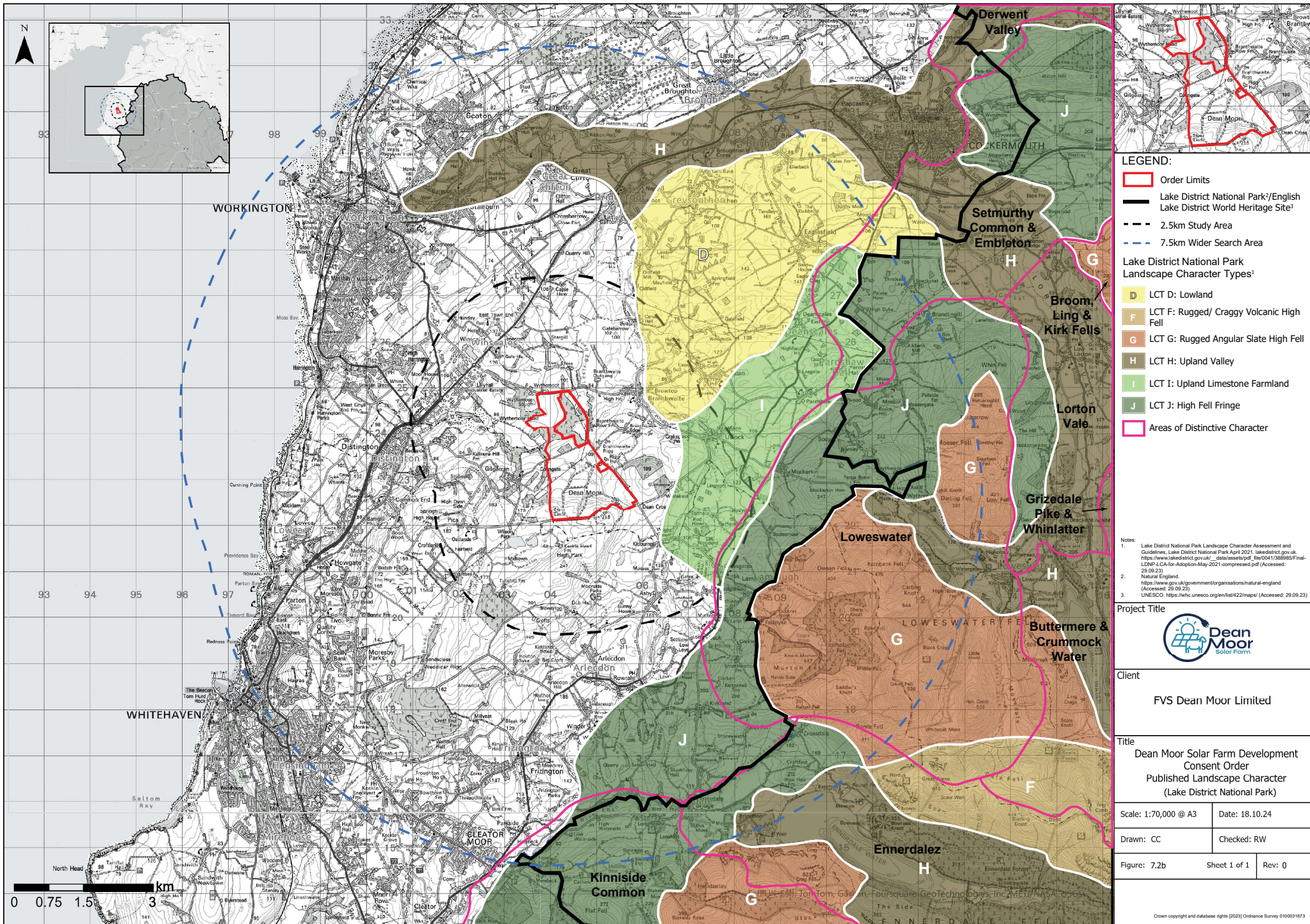
March 2025  
Prepared by: Stantec UK Ltd  
PINS Ref: EN010155  
Document Ref: 6.2  
Revision: 1



Firma Energy

 **ib vogt**





#### LEGEND:

- Order Limits
- Lake District National Park/English Lake District World Heritage Site<sup>1</sup>
- 2.5km Study Area
- 7.5km Wider Search Area
- Lake District National Park Landscape Character Types<sup>1</sup>**
- D** LCT D: Lowland
- F** LCT F: Rugged/ Craggy Volcanic High Fell
- G** LCT G: Rugged Angular Slate High Fell
- H** LCT H: Upland Valley
- I** LCT I: Upland Limestone Farmland
- J** LCT J: High Fell Fringe
- Areas of Distinctive Character

- Notes:
1. Lake District National Park Landscape Character Assessment and Guidelines, Lake District National Park April 2021. [https://www.lakedistrict.gov.uk/\\_data/websites/pdf/lewd041-080805/Final\\_LDNP-LCA-for-Adoption-May-2021-compressed.pdf](https://www.lakedistrict.gov.uk/_data/websites/pdf/lewd041-080805/Final_LDNP-LCA-for-Adoption-May-2021-compressed.pdf) (Accessed: 29.09.23)
  2. Natural England. <https://www.gov.uk/government/organisations/natural-england> (Accessed: 29.09.23)
  3. UNESCO. <https://whc.unesco.org/it/422/maps/> (Accessed: 29.09.23)

#### Project Title



#### Client

FVS Dean Moor Limited

#### Title

Dean Moor Solar Farm Development  
Consent Order  
Published Landscape Character  
(Lake District National Park)

Scale: 1:70,000 @ A3 Date: 18.10.24

Drawn: CC Checked: RW

Figure: 7.2b Sheet 1 of 1 Rev: 0