



Dean Moor Solar Farm

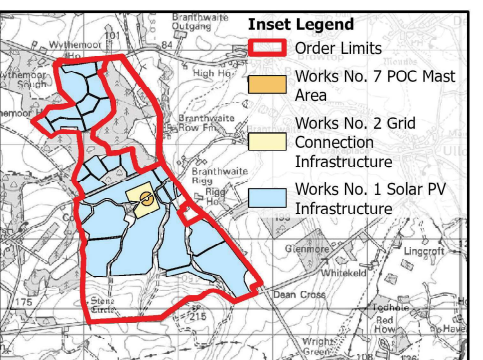
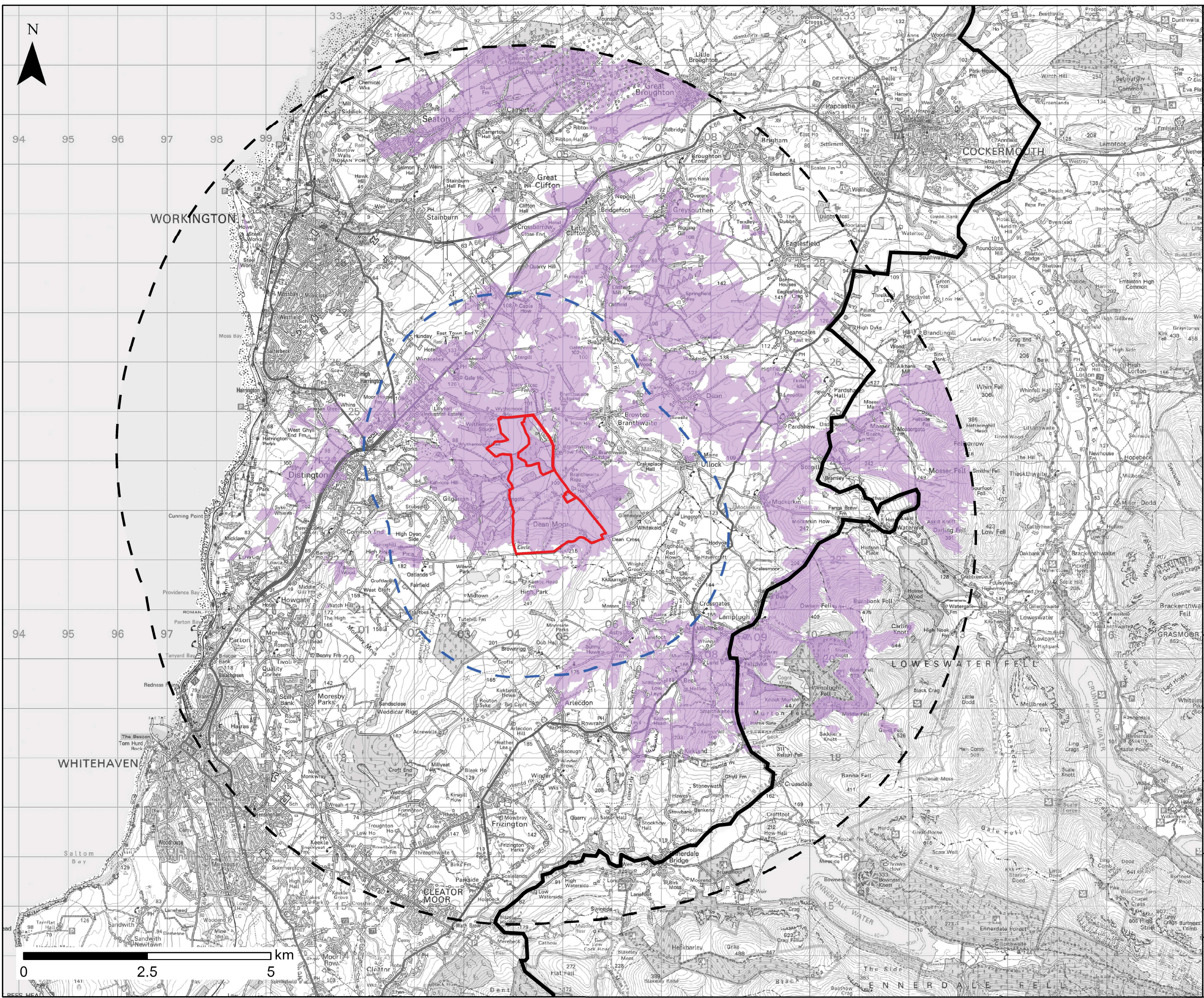
Environmental Statement: Chapter 7 – Figure 7.4a Zone of Theoretical Visibility DTM on behalf of **FVS Dean Moor Limited**

March 2025
Prepared by: Stantec UK Ltd
PINS Ref: EN010155
Document Ref: 6.2
Revision: 1



Firma Energy






Legend

- Order Limits
- 2.5km Study Area
- 7.5km Wider Search Area
- Theoretical Visibility
- Lake District National Park / English Lake District World Heritage Site

- NOTES:**
- This ZTV was run on a Digital Terrain Model (DTM), using National LIDAR Programme Data, 1m resolution grid, 2019.
 - The ZTV was created using Esri ArcGIS Pro version 3.0.2 Spatial Analyst Tool.
 - The ZTV illustrates the area of theoretical visibility of the Site from an initial search area, clipped to a 7.5km extent.
 - The following parameters were used to create the ZTV:
 - Solar PV Infrastructure Parameter Area, from 140 points at 3.3m height.
 - Grid Connection Infrastructure Parameter Area, from 14 points at 9m height.
 - Point of Connection Mast Siting Parameter Area, from 9 points at 30m height.
 - Observer heights were set to 1.6m.
 - The ZTV analysis remains only as a tool in the visual appraisal of the project. Its accuracy is limited to the digital information that it has been based upon, and the algorithm used in its calculation.

| | |
|---|------------------|
| © Crown copyright and database rights [2023] Ordnance Survey 0100031673 | |
| Project Title | |
|  | |
| Client | |
| FVS Dean Moor Limited | |
| Title | |
| DEAN MOOR SOLAR FARM DEVELOPMENT CONSENT ORDER Zone of Theoretical Visibility DTM | |
| Scale: 1:70,000 @ A3 | Date: 12.12.2024 |
| Drawn: IM | Checked: RW |
| Figure: 7.4a | Rev: B |