



Dean Moor Solar Farm

Environmental Statement: Chapter 7 – Figure 7.4b Zone of Theoretical Visibility DTM with View Locations

on behalf of **FVS Dean Moor Limited**

March 2025

Prepared by: Stantec UK Ltd

PINS Ref: EN010155

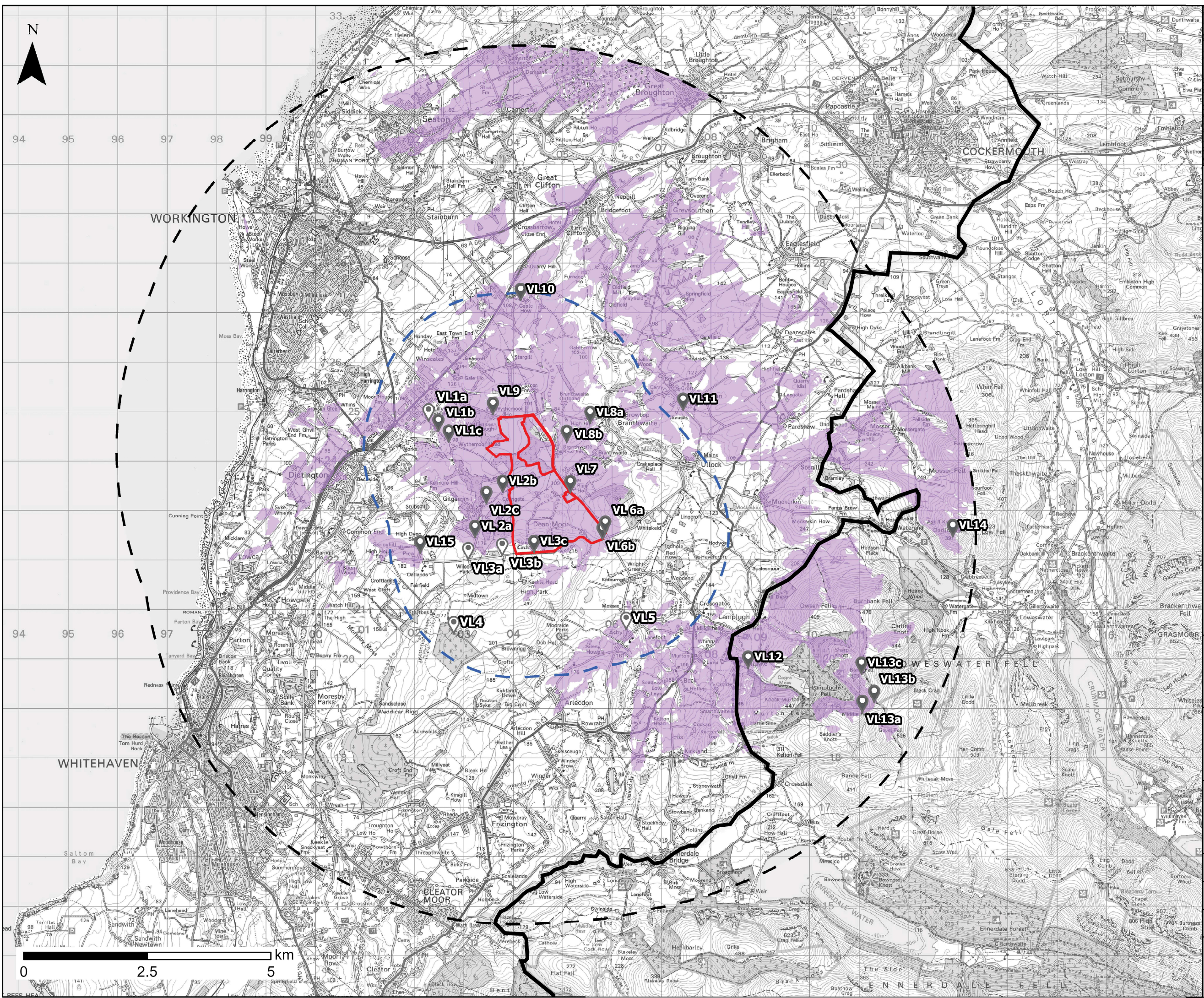
Document Ref: 6.2

Revision: 1



Firma Energy

 **ib vogt**



Inset Legend

- Order Limits
- Works No. 7 POC Mast Area
- Works No. 2 Grid Connection Infrastructure
- Works No. 1 Solar PV Infrastructure


Legend

- Order Limits
- 2.5km Study Area
- 7.5km Wider Search Area
- Theoretical Visibility
- View Locations (Scoped In)
- View Locations (Scoped Out)
- Lake District National Park / English Lake District World Heritage Site

NOTES:

- This ZTV was run on a Digital Terrain Model (DTM), using National LiDAR Programme Data, 1m resolution grid, 2019.
- The ZTV was created using Esri ArcGIS Pro version 3.0.2 Spatial Analyst Tool.
- The ZTV illustrates the area of theoretical visibility of the Site from an initial search area, clipped to a 7.5km extent.
- The following parameters were used to create the ZTV:
 - Solar PV Infrastructure Parameter Area, from 140 points at 3.3m height.
 - Grid Connection Infrastructure Parameter Area, from 14 points at 9m height.
 - Point of Connection Mast Siting Parameter Area, from 9 points at 30m height.
 - Observer heights were set to 1.6m.
- The ZTV analysis remains only as a tool in the visual appraisal of the project. Its accuracy is limited to the digital information that it has been based upon, and the algorithm used in its calculation.

Project Title

**Dean Moor Solar Farm**

Client

FVS Dean Moor Limited

Title

DEAN MOOR SOLAR FARM
DEVELOPMENT CONSENT ORDER

Zone of Theoretical Visibility DTM with
View Locations

Scale: 1:70,000 @ A3	Date: 12.12.2024
Drawn: 1M	Checked: RW
Figure: 7.4b	Rev: B