



Dean Moor Solar Farm

Environmental Statement: Chapter 7 – Figure 7.5c ZTV of Work No.2a POC Mast Siting Area with View Locations

on behalf of **FVS Dean Moor Limited**

March 2025

Prepared by: Stantec UK Ltd

PINS Ref: EN010155

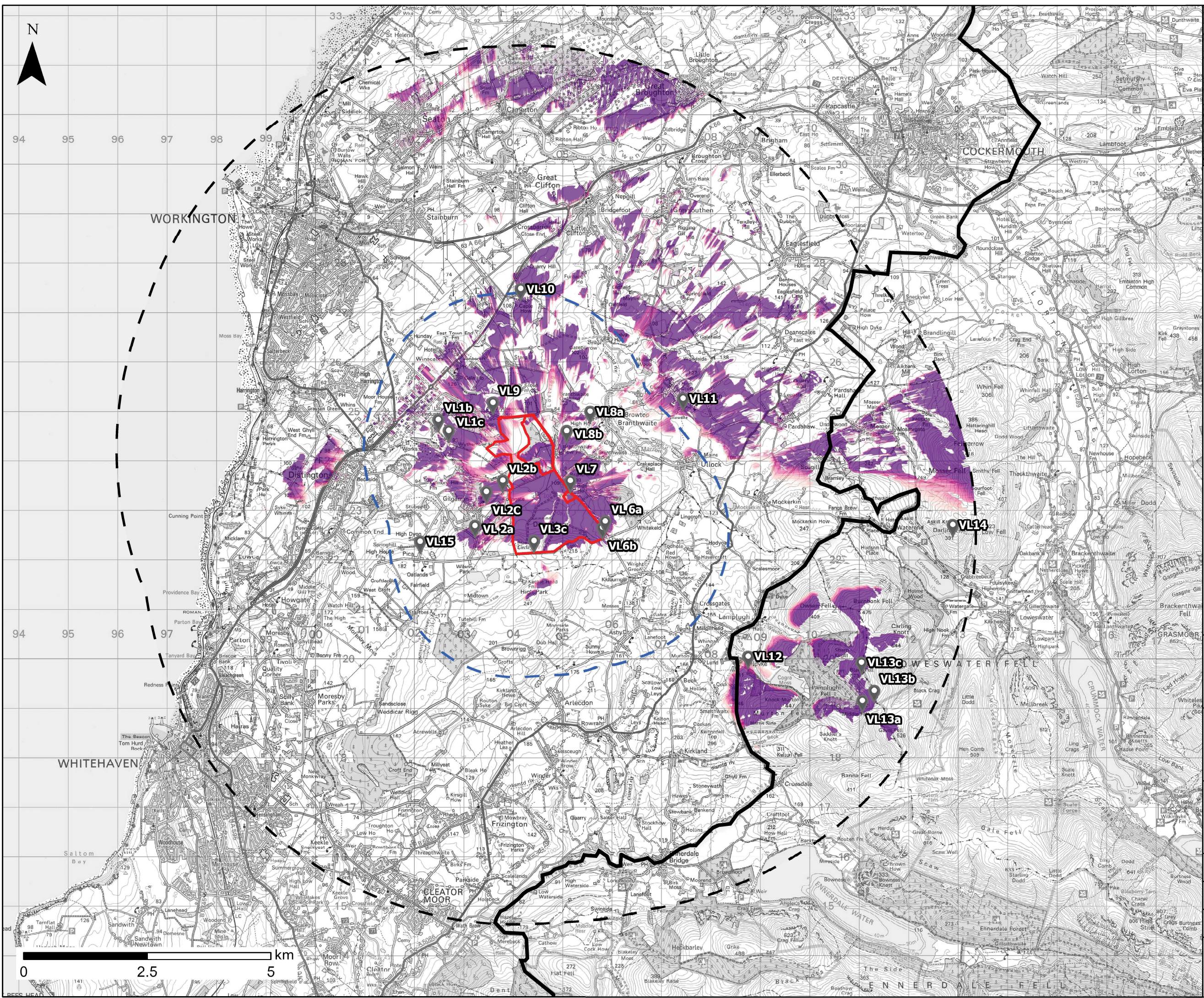
Document Ref: 6.2

Revision: 1



Firma Energy

 **ib vogt**



Inset Legend

- Order Limits
- Works No. 2a POC Mast Area
- Works No. 2 Grid
- Connection Infrastructure
- Works No. 1 Solar PV Infrastructure

Legend

- Order Limits
- 2.5km Study Area
- 7.5km Wider Search Area

Percentage of Theoretical Visibility:

| | |
|-----|------|
| 10% | 60% |
| 20% | 70% |
| 30% | 80% |
| 40% | 90% |
| 50% | 100% |


- View Locations
- Lake District National Park / English Lake District World Heritage Site

NOTES:

- This ZTV was run on a Digital Surface Model (DSM), using National LIDAR Programme Data, 1m resolution grid, 2019.
- The ZTV was created using Esri ArcGIS Pro version 3.0.2 Spatial Analyst Tool.
- The ZTV illustrates the area of theoretical visibility of the Site from an initial search area, clipped to a 7.5km extent.
- The following parameters were used to create the ZTV:
 - Point of Connection Mast Siting Parameter Area, from 9 points at 30m height.
 - Observer heights were set to 1.6m.
- The ZTV analysis remains only as a tool in the visual appraisal of the project. Its accuracy is limited to the digital information that it has been based upon, and the algorithm used in its calculation.

© Crown copyright and database rights [2023] Ordnance Survey 0100031673

Project Title



Client

FVS Dean Moor Limited

Title

DEAN MOOR SOLAR FARM
DEVELOPMENT CONSENT ORDER

ZTV of Works No. 2a - POC Mast Siting
Area with View Locations

| | |
|----------------------|------------------|
| Scale: 1:70,000 @ A3 | Date: 12.12.2024 |
| Drawn: IM | Checked: RW |
| Figure: 7.5c | Rev: B |