



Dean Moor Solar Farm

Environmental Statement: Appendix 6.1 – Historic Environment Desk-Based Assessment (HEDBA) (2 of 4)

on behalf of **FVS Dean Moor Limited**

March 2025
Prepared by: Stantec UK Ltd
PINS Ref: EN010155
Document Ref: 6.3
Revision: 1



Firma Energy

 **ib vogt**

Figure 13: 2018 Satellite imagery of the Site



Figure 14: LiDAR of the Northern portion of Site

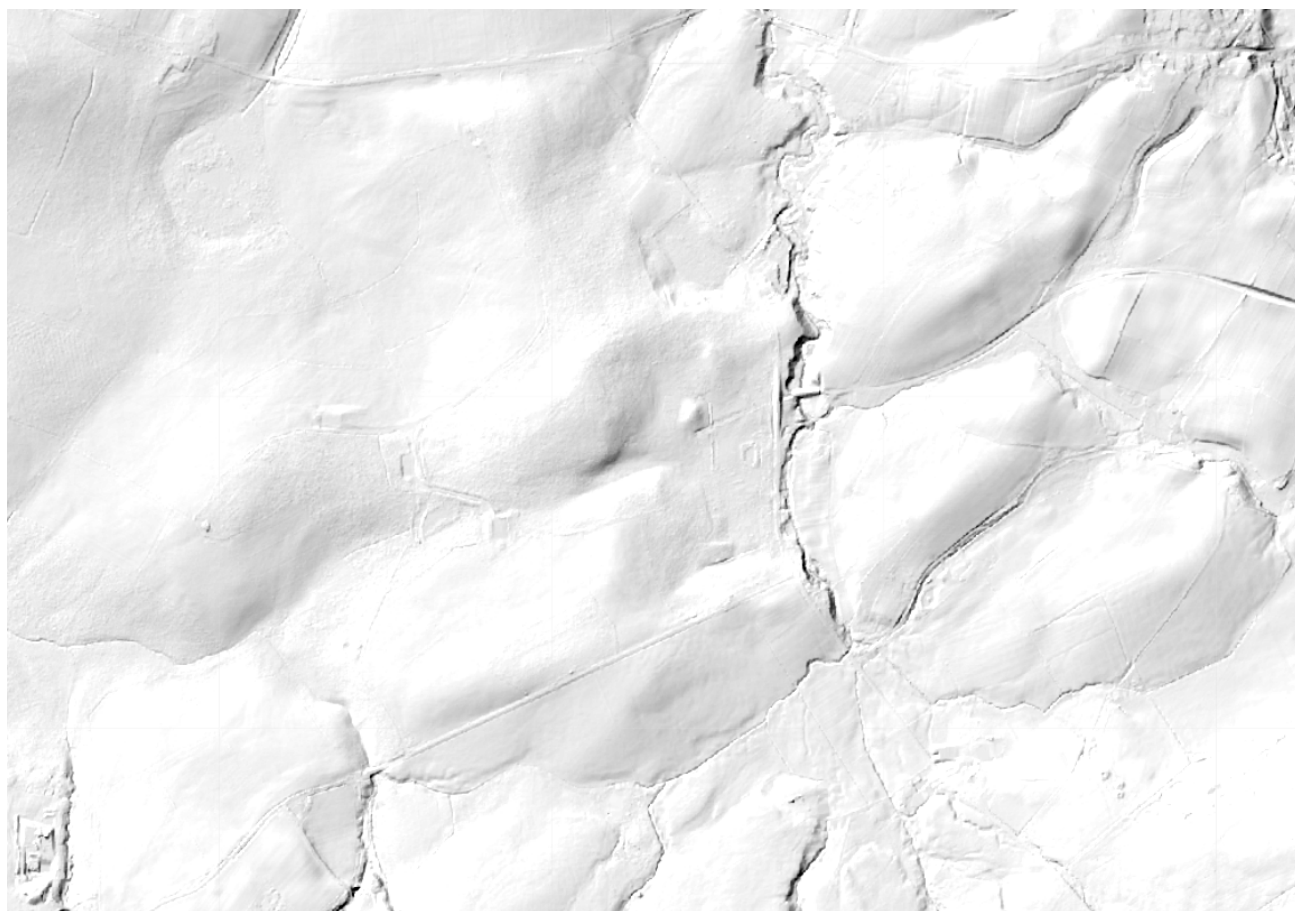


Figure 15: LiDAR of the southern portion of the Site

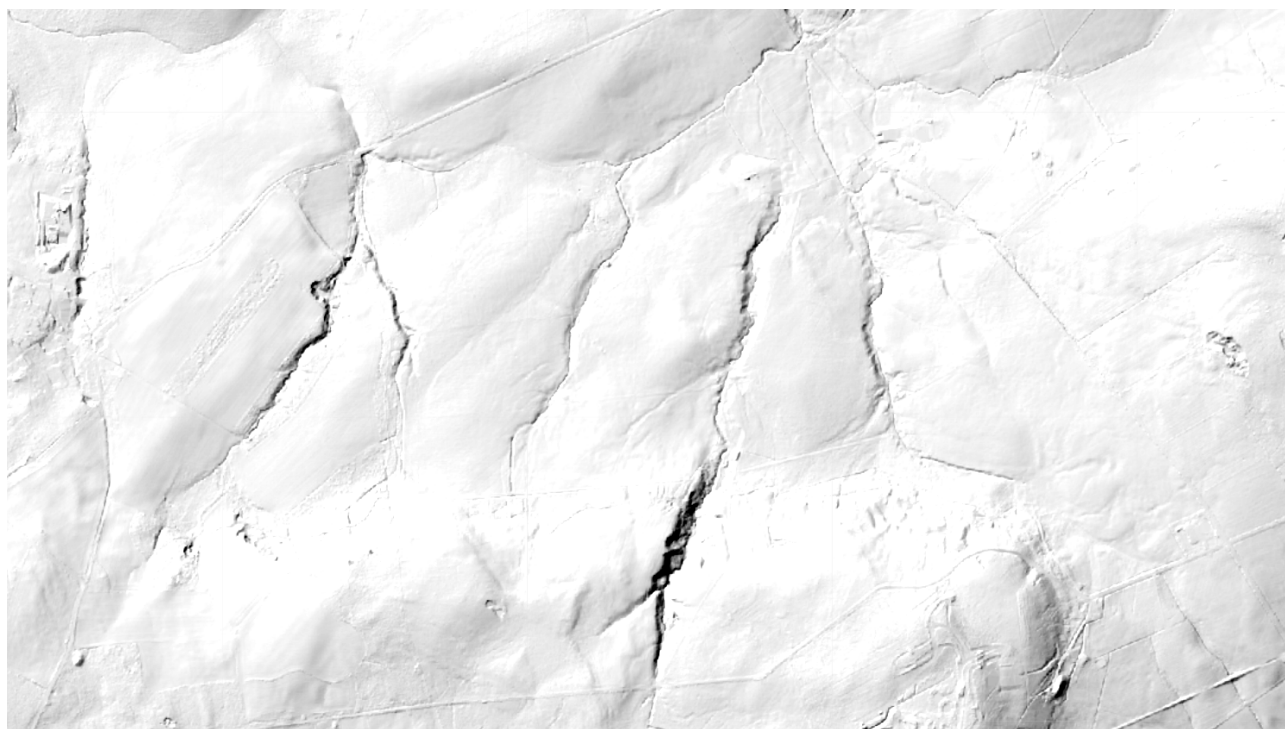


Figure 16: 2023 present satellite imagery



Figure 17: Monolith of Dean Moor Stone circle intersected by dry stone walling



Figure 18: Dean Moor Stone Circle and plateau of Dean Moor



Figure 19: Wythemoor Sough and adjoining barns and stables Grade II listed asset



Figure 20: Long Distance views from Wythemoor Sough Grade II listed asset



Figure 21: Far Branthwaite Edge, Dairy and Barn Adjoining⁵⁹ Grade II listed asset



⁵⁹ <https://historicengland.org.uk/listing/the-list/list-entry/1138216>