



Dean Moor Solar Farm

Environmental Statement: Appendix 7.5 – View Location Photosheets (7 of 8) on behalf of **FVS Dean Moor Limited**

March 2025
Prepared by: Stantec UK Ltd
PINS Ref: EN010155
Document Ref: 6.3
Revision: 1



Firma Energy

 **ib vogt**

Photograph continued on previous sheet



View Location

8b

2/2

Summer View

Dean Moor Solar Farm

NOTE: All photographs have been taken using a Canon EOS 6D Mk II full-frame digital camera using a Canon EF 50mm f/1.8 STM which is a fixed focal-length lens.

The image here is representative of a 90 degree panorama presented at a width of 820mm with an image sizing of 96%. Panoramas may have been cropped but have not been manipulated beyond basic image processing.

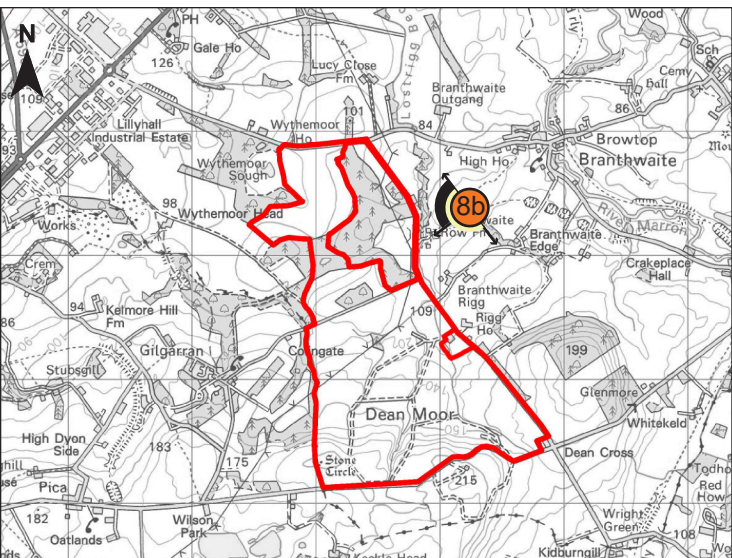
Summer photography is representative of a 'vegetation with leaf scenario, and winter photography a 'without leaf' scenario.

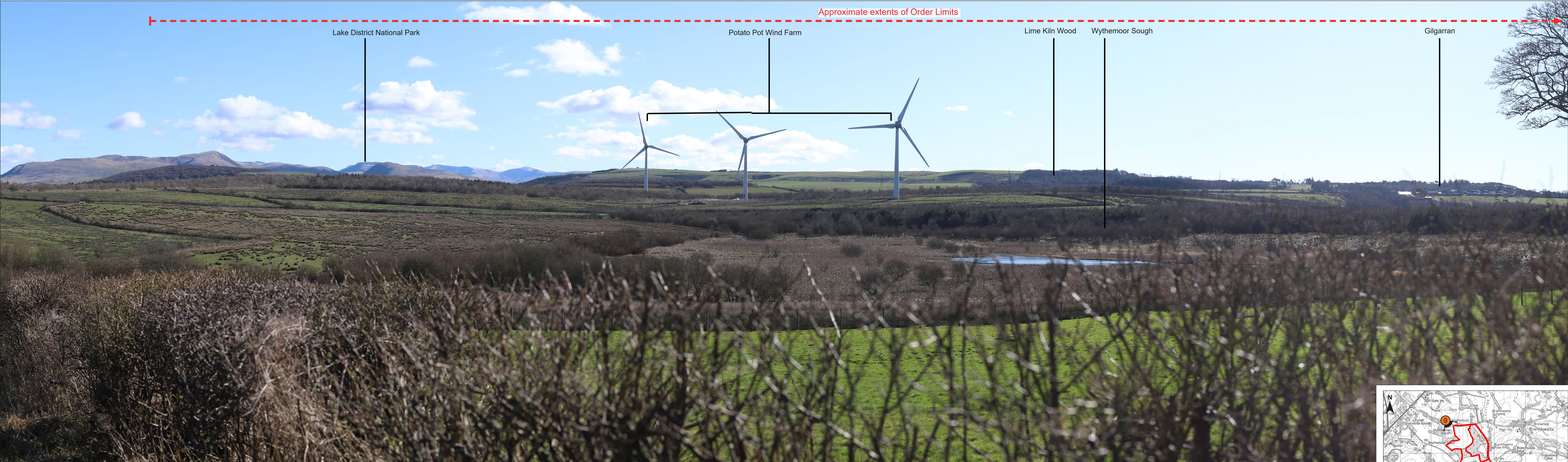
Each photograph identifies an indicative extent of the areas of development and the draft order limits. These are not representative of what may or may not be visible in the view and are provided to give context to the reader of where the Proposed Development is located and its theoretical maximum extent. In some views individual features are not labelled as either these will not be visible or the distance between the receptor and Site is considered to great to label individual features. The extents shown accord with the parameters identified on Figure 3.1 - Concept Layout.



Viewpoint grid ref:	E 305018, N 524311	Ref:	Appendix 7.5
Sheet Size:	A1 Landscape	Rev:	0
Photographs taken:	04.10.2023	Date:	11/03/2024
		Drawn:	JK
		Checked:	AC

Photosheet 40 of 58





View Location 9

Dean Moor Solar Farm

Photosheet 41 of 58

NOTE: All photographs have been taken using a Canon EOS 6D Mk II full-frame digital camera using a Canon EF 50mm f/1.8 STM which is a fixed focal-length lens.

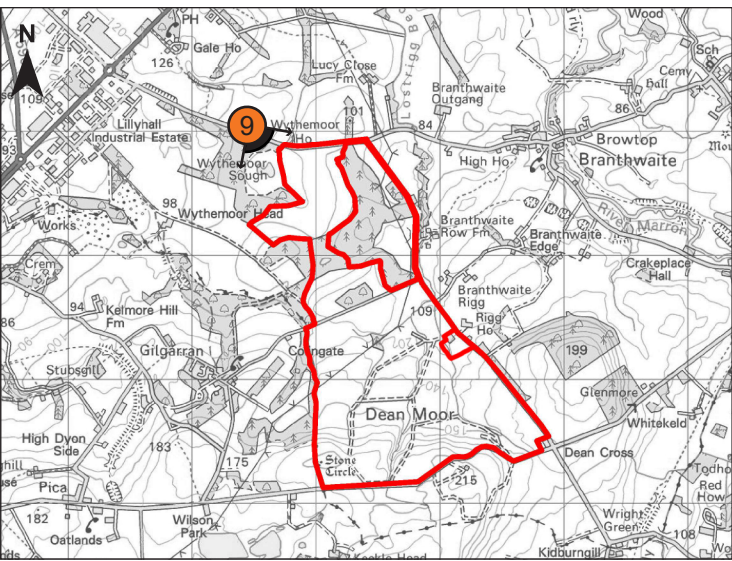
The image here is representative of a 90 degree panorama presented at a width of 820mm with an image sizing of 96%. Panoramas may have been cropped but have not been manipulated beyond basic image processing.

Summer photography is representative of a 'vegetation with leaf scenario, and winter photography a 'without leaf' scenario.

Each photograph identifies an indicative extent of the areas of development and the draft order limits. These are not representative of what may or may not be visible in the view and are provided to give context to the reader of where the Proposed Development is located and its theoretical maximum extent. In some views individual features are not labelled as either these will not be visible or the distance between the receptor and Site is considered to great to label individual features. The extents shown accord with the parameters identified on Figure 3.1 - Concept Layout.



Viewpoint grid ref:	E 303602, N 524926	Ref:	Appendix 7.5
Sheet Size:	A1 Landscape	Rev:	0
Photographs taken:	06.03.2023	Date:	11/03/2024
		Drawn:	JK
		Checked:	AC







Dean Moor Solar Farm

NOTE: All photographs have been taken using a Canon EOS 6D Mk II full-frame digital camera using a Canon EF 50mm f/1.8 STM which is a fixed focal-length lens.

The image here is representative of a 90 degree panorama presented at a width of 820mm with an image sizing of 96%. Panoramas may have been cropped but have not been manipulated beyond basic image processing.

Summer photography is representative of a 'vegetation with leaf scenario, and winter photography a 'without leaf scenario.

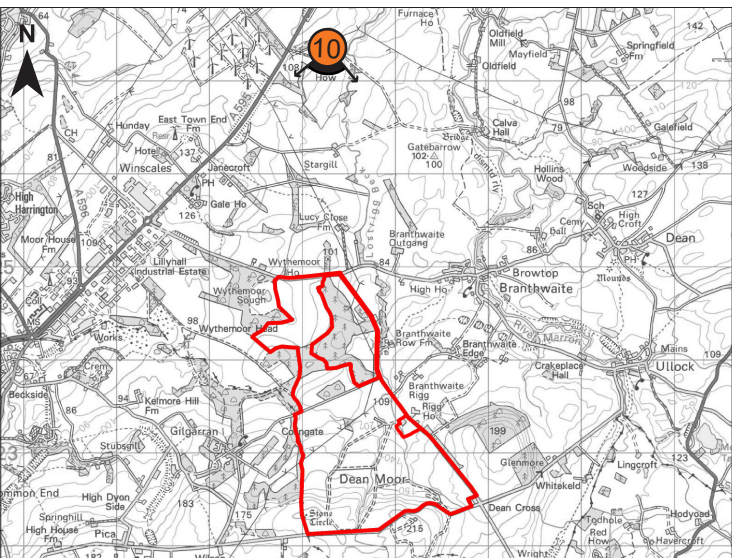
Each photograph identifies an indicative extent of the areas of development and the draft order limits. These are not representative of what may or may not be visible in the view and are provided to give context to the reader of where the Proposed Development is located and its theoretical maximum extent. In some views individual features are not labelled as either these will not be visible or the distance between the receptor and Site is considered to great to label individual features. The extents shown accord with the parameters identified on Figure 3.1 - Concept Layout.



Viewpoint grid ref: E 304217, N 527227
Sheet Size: A1 Landscape
Photographs taken: 06.03.2023

Ref: 0
Rev: 0
Date: 11/03/2024
Drawn: JK
Checked: AC

Appendix 7.5





Dean Moor Solar Farm

NOTE: All photographs have been taken using a Canon EOS 6D Mk II full-frame digital camera using a Canon EF 50mm f/1.8 STM which is a fixed focal-length lens.

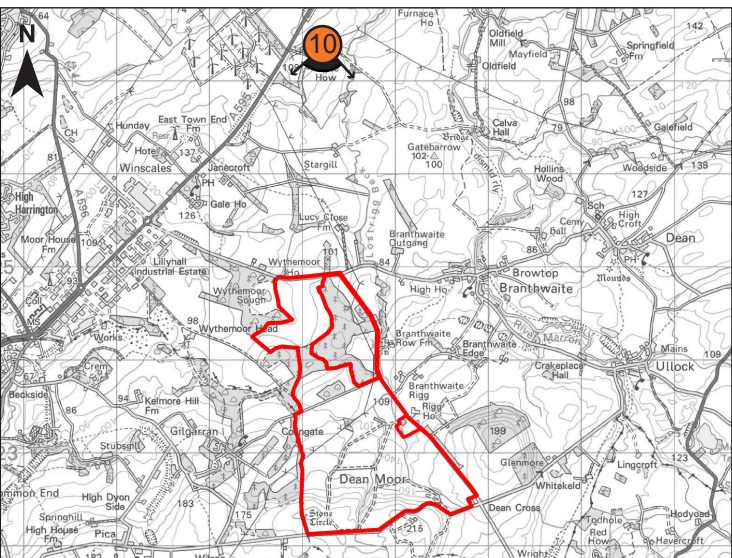
The image here is representative of a 90 degree panorama presented at a width of 820mm with an image sizing of 96%. Panoramas may have been cropped but have not been manipulated beyond basic image processing.

Summer photography is representative of a 'vegetation with leaf scenario, and winter photography a 'without leaf' scenario.

Each photograph identifies an indicative extent of the areas of development and the draft order limits. These are not representative of what may or may not be visible in the view and are provided to give context to the reader of where the Proposed Development is located and its theoretical maximum extent. In some views individual features are not labelled as either these will not be visible or the distance between the receptor and Site is considered to great to label individual features. The extents shown accord with the parameters identified on Figure 3.1 - Concept Layout.



Viewpoint grid ref:	E 304217, N 527227	Ref:	Appendix 7.5
Sheet Size:	A1 Landscape	Rev:	0
Photographs taken:	10.10.2024	Date:	11/03/2024
		Drawn:	JK
		Checked:	AC





Dean Moor Solar Farm

NOTE: All photographs have been taken using a Canon EOS 6D Mk II full-frame digital camera using a Canon EF 50mm f/1.8 STM which is a fixed focal-length lens.

The image here is representative of a 90 degree panorama presented at a width of 820mm with an image sizing of 96%. Panoramas may have been cropped but have not been manipulated beyond basic image processing.

Summer photography is representative of a 'vegetation with leaf scenario, and winter photography a 'without leaf' scenario.

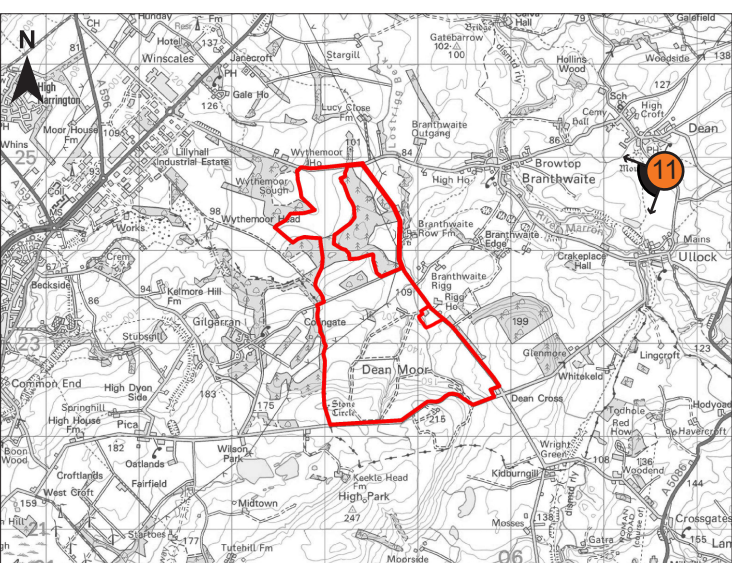
Each photograph identifies an indicative extent of the areas of development and the draft order limits. These are not representative of what may or may not be visible in the view and are provided to give context to the reader of where the Proposed Development is located and its theoretical maximum extent. In some views individual features are not labelled as either these will not be visible or the distance between the receptor and Site is considered to great to label individual features. The extents shown accord with the parameters identified on Figure 3.1 - Concept Layout.



Viewpoint grid ref: E 307452, N 525033
Sheet Size: A1 Landscape
Photographs taken: 06.03.2023

Ref: 0
Rev: 0
Date: 11/03/2024
Drawn: JK
Checked: AC

Appendix 7.5





Dean Moor Solar Farm

NOTE: All photographs have been taken using a Canon EOS 6D Mk II full-frame digital camera using a Canon EF 50mm f/1.8 STM which is a fixed focal-length lens.

The image here is representative of a 90 degree panorama presented at a width of 820mm with an image sizing of 96%. Panoramas may have been cropped but have not been manipulated beyond basic image processing.

Summer photography is representative of a 'vegetation with leaf scenario, and winter photography a 'without leaf scenario.

Each photograph identifies an indicative extent of the areas of development and the draft order limits. These are not representative of what may or may not be visible in the view and are provided to give context to the reader of where the Proposed Development is located and its theoretical maximum extent. In some views individual features are not labelled as either these will not be visible or the distance between the receptor and Site is considered to great to label individual features. The extents shown accord with the parameters identified on Figure 3.1 - Concept Layout.



Viewpoint grid ref: E 307452, N 525033
Sheet Size: A1 Landscape
Photographs taken: 04.10.2023

Ref: Appendix 7.5
Rev: 0
Date: 11/03/2024
Drawn: JK
Checked: AC

