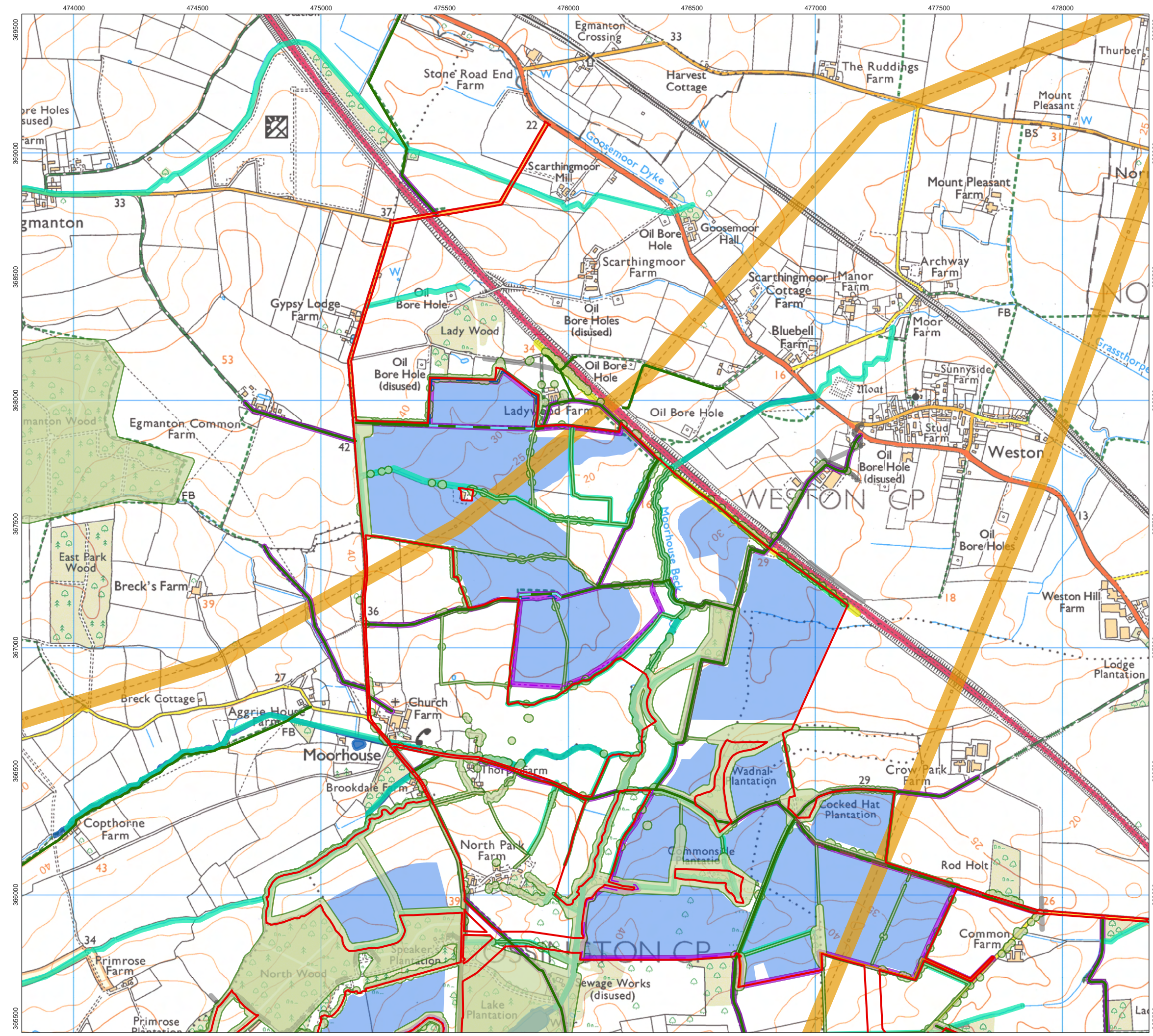


Notes: Root protection areas are established in the Arboricultural Impact Assessment (ES TAA8.12 [EN010162/APP/6.4.8.12]). The preliminary tree and hedgerow buffers which informed the initial design are shown in this figure. Areas of potential archaeological interest will be determined by a qualified archaeologist following completion of the work set out in the Archaeological Mitigation Strategy (ES TAA11.8 [EN010162/APP/6.4.11.8]).





Order Limits

Works No. 1 Solar PV

Constraints to Solar PV

Preliminary Tree and Hedgerow Buffers

30.6 m Buffer of Overhead 400 kV Electricity Line

13.6 m Buffer of Overhead 132 kV Electricity Line

11 m Buffer Overhead 33 kV Electricity Line

8 m Buffer of Underground 11 kV Electricity Line

8 m Buffer of Overhead 11 kV Electricity Line

10 m Buffer of Watercourse

10 m buffer of Waterbodies

10 m Buffer of Gas Pipeline (medium/low pressure)

10 m Buffer of Public Right of Way, Diverted Public Right of Way, and New Permissive Routes

Public Rights of Way

New Permissive Footpath

New Permissive Bridleway

Footpath Closure

Footpath Diversion

Bridleway Closed for Construction and Decommissioning

Bridleway Diversion for Construction and Decommissioning



1:15,000    Scale @ A3

0    125    250    500 m

Ref: 026-ES-5.3    Date: 24/06/2025

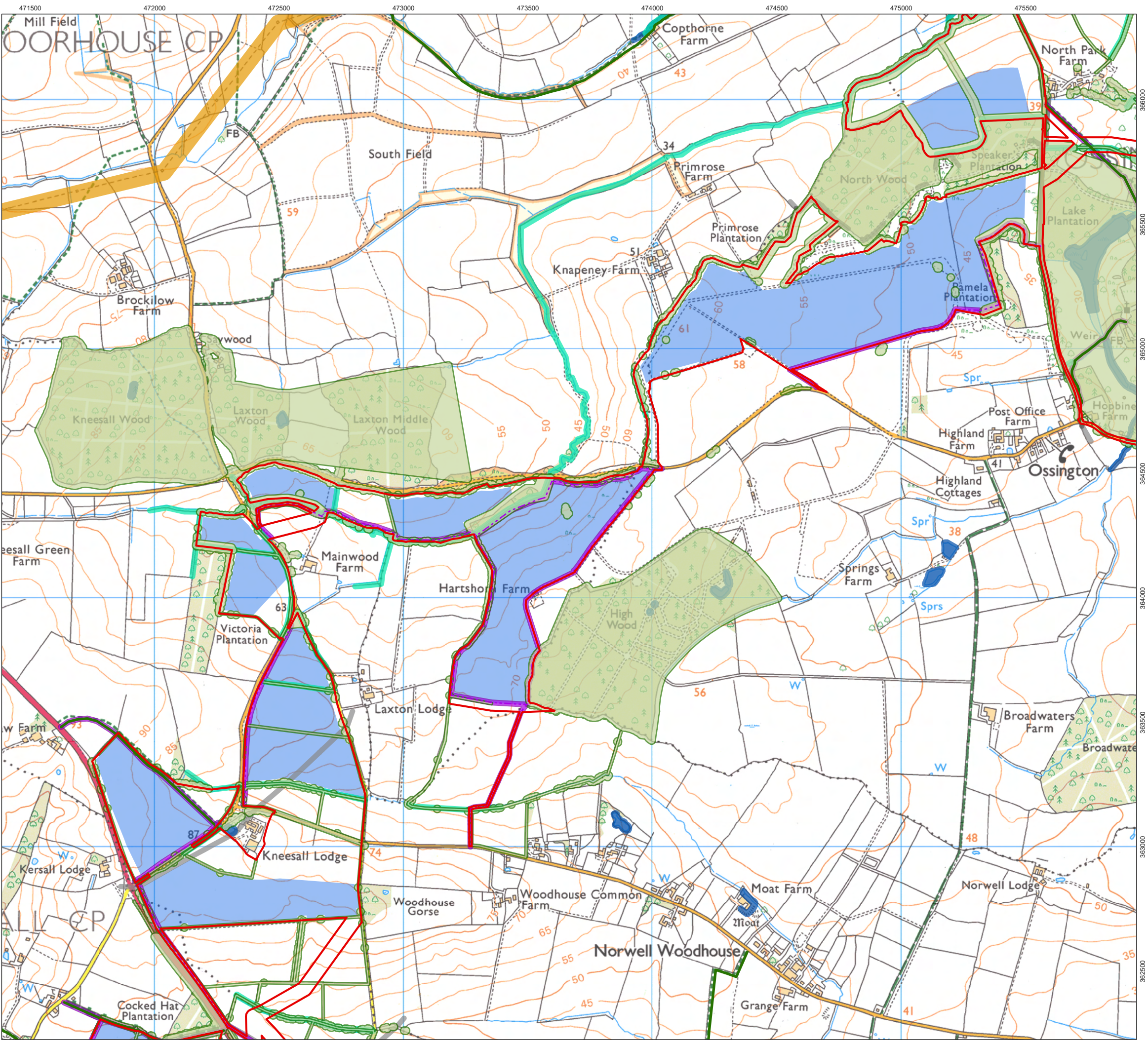
Environmental Constraints  
Figure 5.3(1)

Great North Road Solar and Biodiversity Park  
Environmental Statement

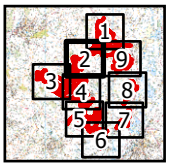
© Crown copyright and database rights 2025 Ordnance Survey AC0000808122. This drawing may contain: OS Open data / © Natural England / © DEFRA / © DECC / © Historic England/ public sector information licensed under the Open Government Licence v3.0. Aerial Photography. Nottinghamshire County Council 2025.



Notes: Root protection areas are established in the Arboricultural Impact Assessment (ES TAA8.12 [EN010162/APP/6.4.8.12]). The preliminary tree and hedgerow buffers which informed the initial design are shown in this figure. Areas of potential archaeological interest will be determined by a qualified archaeologist following completion of the work set out in the Archaeological Mitigation Strategy (ES TAA11.8 [EN010162/APP/6.4.11.8]).



- Order Limits
- Works No. 1 Solar PV
- Constraints to Solar PV
  - Preliminary Tree and Hedgerow Buffers
  - 30.6 m Buffer of Overhead 400 kV Electricity Line
  - 13.6 m Buffer of Overhead 132 kV Electricity Line
  - 11 m Buffer Overhead 33 kV Electricity Line
  - 8 m Buffer of Underground 11 kV Electricity Line
  - 8 m Buffer of Overhead 11 kV Electricity Line
  - 10 m Buffer of Watercourse
  - 10 m buffer of Waterbodies
  - 10 m Buffer of Gas Pipeline (medium/low pressure)
  - 10 m Buffer of Public Right of Way, Diverted Public Right of Way, and New Permissive Routes
- Public Rights of Way
- New Permissive Footpath
- New Permissive Bridleway
- Footpath Closure
- Footpath Diversion
- Bridleway Closed for Construction and Decommissioning
- Bridleway Diversion for Construction and Decommissioning



1:15,000    Scale @ A3

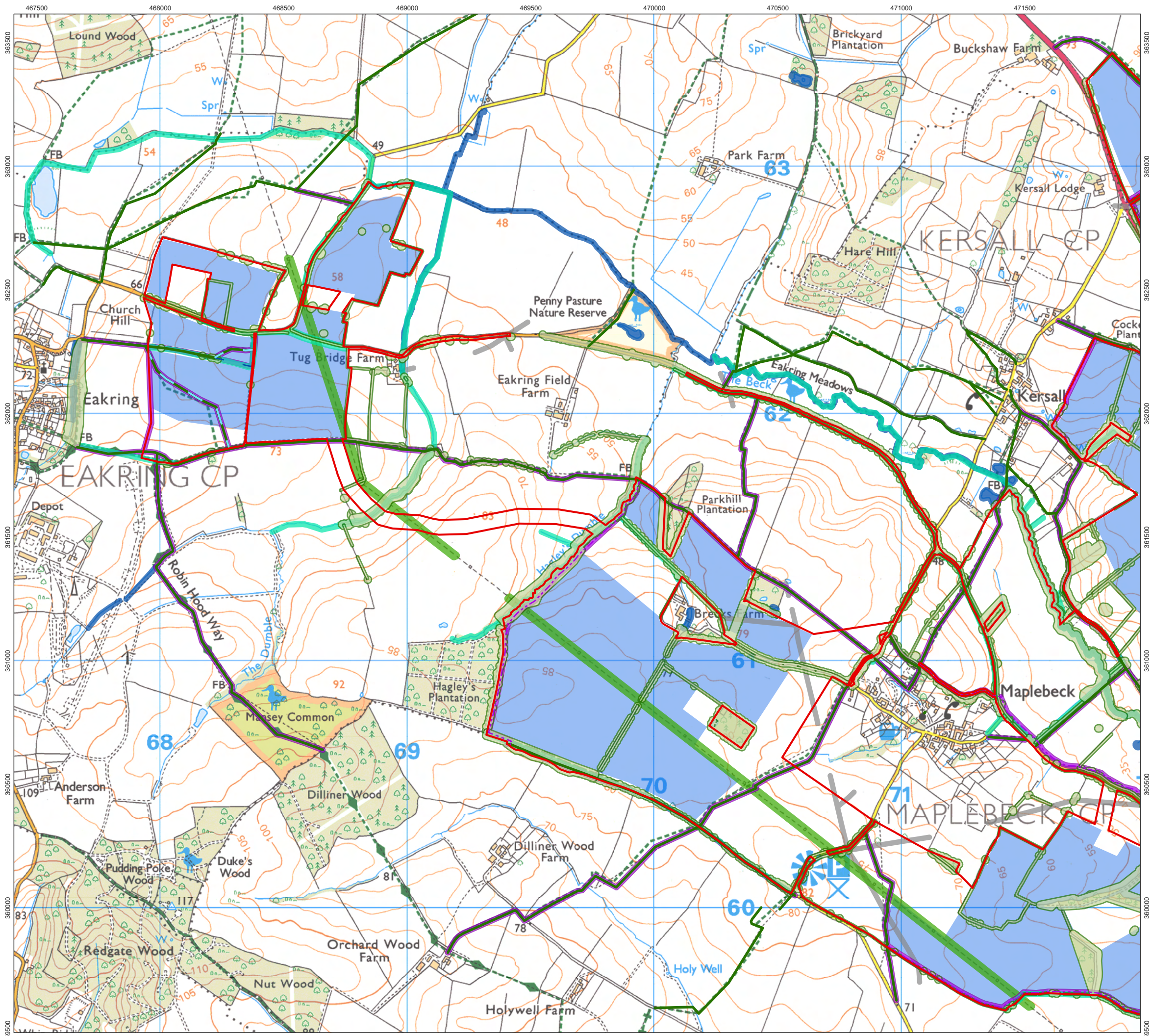
Ref: 026-ES-5.3      Date: 24/06/2025

Environmental Constraints  
Figure 5.3(2)

Great North Road Solar and Biodiversity Park  
Environmental Statement



Notes: Root protection areas are established in the Arboricultural Impact Assessment (ES TAA8.12 [EN010162/APP/6.4.8.12]). The preliminary tree and hedgerow buffers which informed the initial design are shown in this figure. Areas of potential archaeological interest will be determined by a qualified archaeologist following completion of the work set out in the Archaeological Mitigation Strategy (ES TAA11.8 [EN010162/APP/6.4.11.8]).





Order Limits

Works No. 1 Solar PV

Constraints to Solar PV

Preliminary Tree and Hedgerow Buffers

30.6 m Buffer of Overhead 400 kV Electricity Line

13.6 m Buffer of Overhead 132 kV Electricity Line

11 m Buffer Overhead 33 kV Electricity Line

8 m Buffer of Underground 11 kV Electricity Line

8 m Buffer of Overhead 11 kV Electricity Line

10 m Buffer of Watercourse

10 m buffer of Waterbodies

10 m Buffer of Gas Pipeline (medium/low pressure)

10 m Buffer of Public Right of Way, Diverted Public Right of Way, and New Permissive Routes

Public Rights of Way

New Permissive Footpath

New Permissive Bridleway

Footpath Closure

Footpath Diversion

Bridleway Closed for Construction and Decommissioning

Bridleway Diversion for Construction and Decommissioning



1:15,000    Scale @ A3

0    125    250    500 m

Ref: 026-ES-5.3

Date: 24/06/2025

Environmental Constraints

Figure 5.3(3)

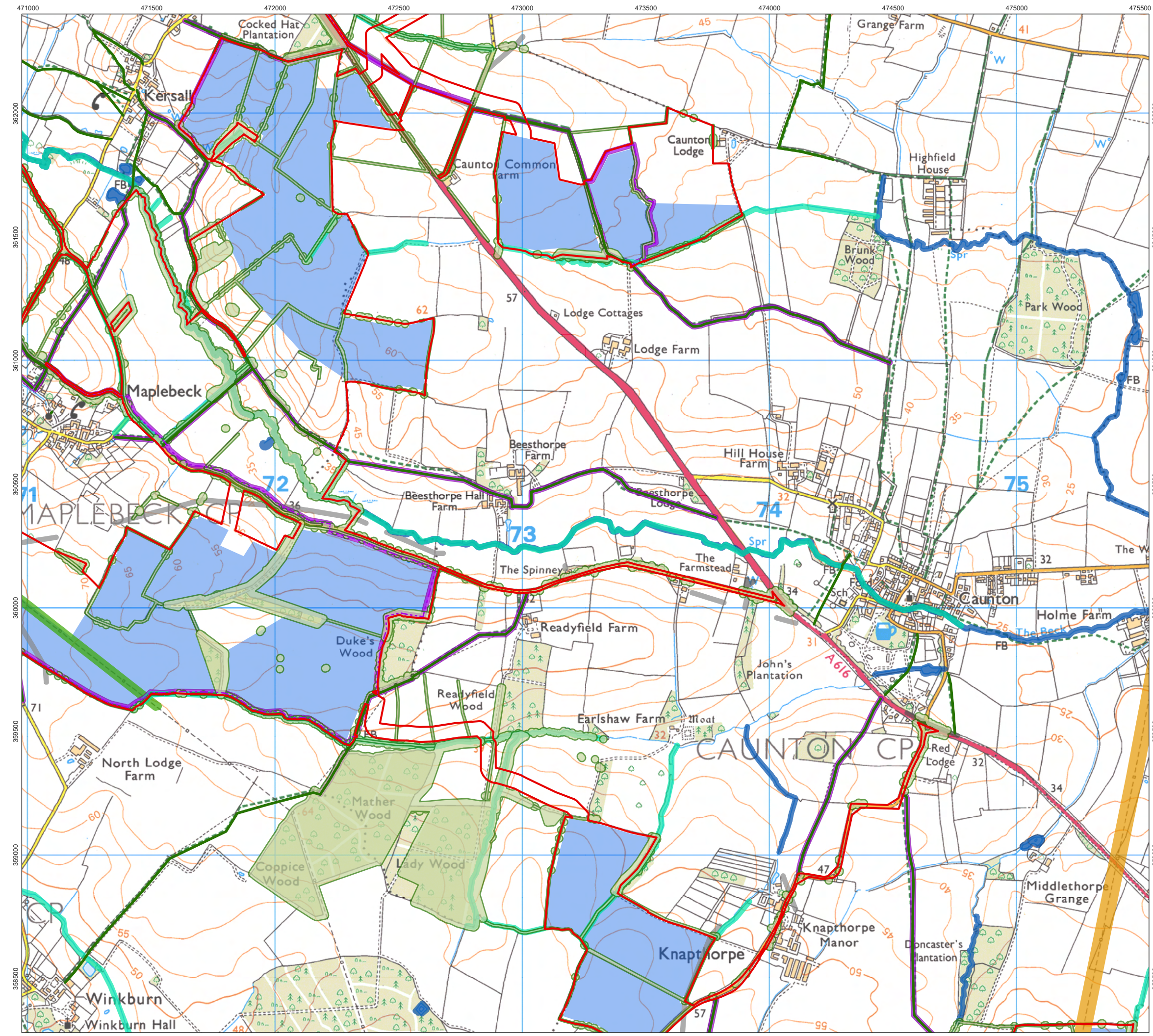
Great North Road Solar and Biodiversity Park

Environmental Statement

© Crown copyright and database rights 2025 Ordnance Survey AC0000808122. This drawing may contain: OS Open data / © Natural England / © DEFRA / © DECC / © Historic England/ public sector information licensed under the Open Government Licence v3.0. Aerial Photography. Nottinghamshire County Council 2025.



Notes: Root protection areas are established in the Arboricultural Impact Assessment (ES TAA8.12 [EN010162/APP/6.4.8.12]). The preliminary tree and hedgerow buffers which informed the initial design are shown in this figure. Areas of potential archaeological interest will be determined by a qualified archaeologist following completion of the work set out in the Archaeological Mitigation Strategy (ES TAA11.8 [EN010162/APP/6.4.11.8]).





Order Limits

Works No. 1 Solar PV

Constraints to Solar PV

Preliminary Tree and Hedgerow Buffers

30.6 m Buffer of Overhead 400 kV Electricity Line

13.6 m Buffer of Overhead 132 kV Electricity Line

11 m Buffer Overhead 33 kV Electricity Line

8 m Buffer of Underground 11 kV Electricity Line

8 m Buffer of Overhead 11 kV Electricity Line

10 m Buffer of Watercourse

10 m buffer of Waterbodies

10 m Buffer of Gas Pipeline (medium/low pressure)

10 m Buffer of Public Right of Way, Diverted Public Right of Way, and New Permissive Routes

Public Rights of Way

New Permissive Footpath

New Permissive Bridleway

Footpath Closure

Footpath Diversion

Bridleway Closed for Construction and Decommissioning

Bridleway Diversion for Construction and Decommissioning



1:15,000    Scale @ A3

0

125

250

500 m

Ref: 026-ES-5.3

Date: 24/06/2025

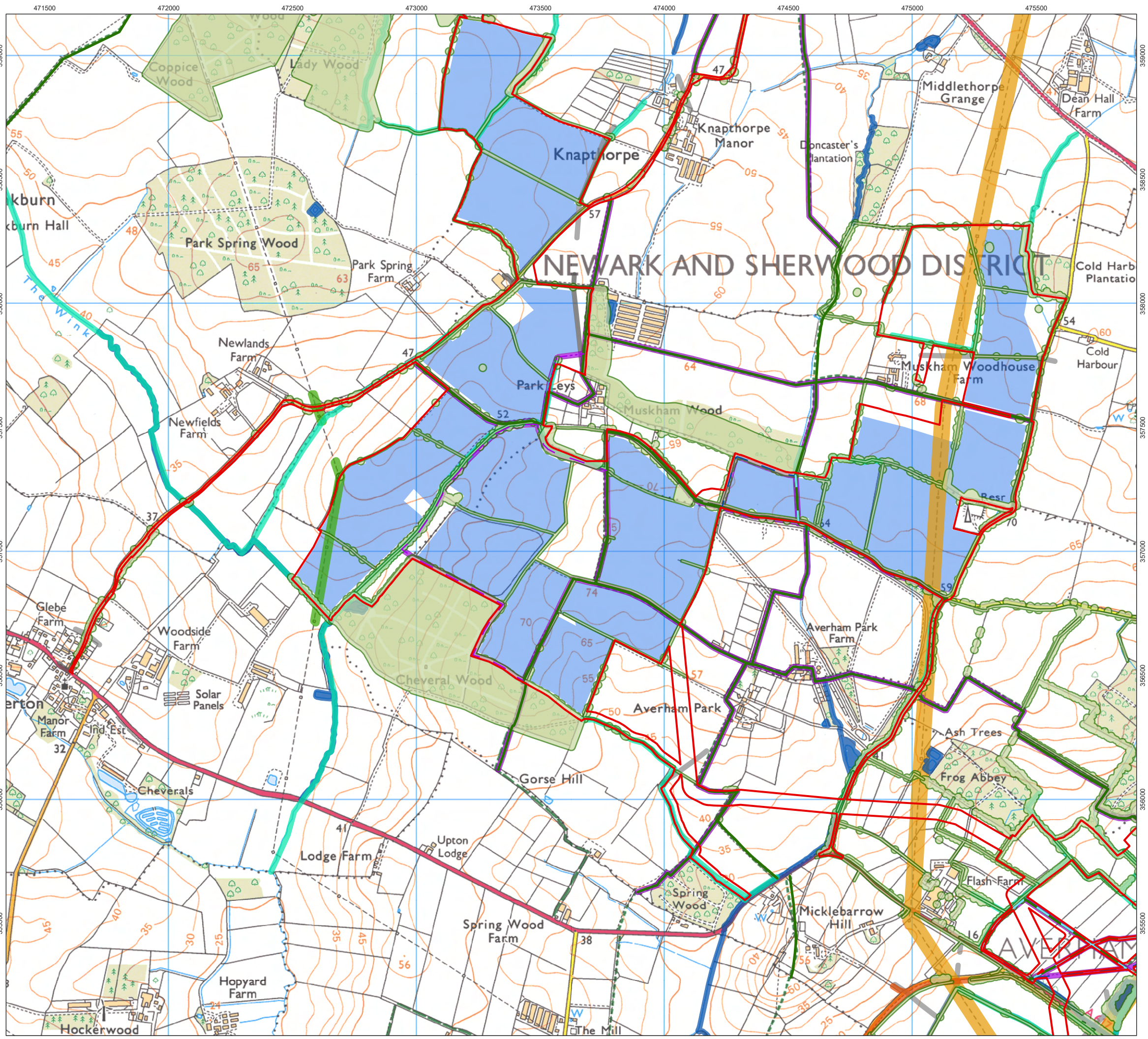
Environmental Constraints  
Figure 5.3(4)

Great North Road Solar and Biodiversity Park  
Environmental Statement

© Crown copyright and database rights 2025 Ordnance Survey AC0000808122. This drawing may contain: OS Open data / © Natural England / © DEFRA / © DECC / © Historic England/ public sector information licensed under the Open Government Licence v3.0. Aerial Photography. Nottinghamshire County Council 2025.



Notes: Root protection areas are established in the Arboricultural Impact Assessment (ES TAA8.12 [EN010162/APP/6.4.8.12]). The preliminary tree and hedgerow buffers which informed the initial design are shown in this figure. Areas of potential archaeological interest will be determined by a qualified archaeologist following completion of the work set out in the Archaeological Mitigation Strategy (ES TAA11.8 [EN010162/APP/6.4.11.8]).





 Order Limits

 Works No. 1 Solar PV

Constraints to Solar PV

 Preliminary Tree and Hedgerow Buffers

 30.6 m Buffer of Overhead 400 kV Electricity Line

 13.6 m Buffer of Overhead 132 kV Electricity Line

 11 m Buffer Overhead 33 kV Electricity Line

 8 m Buffer of Underground 11 kV Electricity Line

 8 m Buffer of Overhead 11 kV Electricity Line

 10 m Buffer of Watercourse

 10 m buffer of Waterbodies

 10 m Buffer of Gas Pipeline (medium/low pressure)

 10 m Buffer of Public Right of Way, Diverted Public Right of Way, and New Permissive Routes

 Public Rights of Way

 New Permissive Footpath

 New Permissive Bridleway

 Footpath Closure

 Footpath Diversion

 Bridleway Closed for Construction and Decommissioning

 Bridleway Diversion for Construction and Decommissioning



1:15,000    Scale @ A3



Ref: 026-ES-5.3

Date: 24/06/2025

Environmental Constraints

Figure 5.3(5)

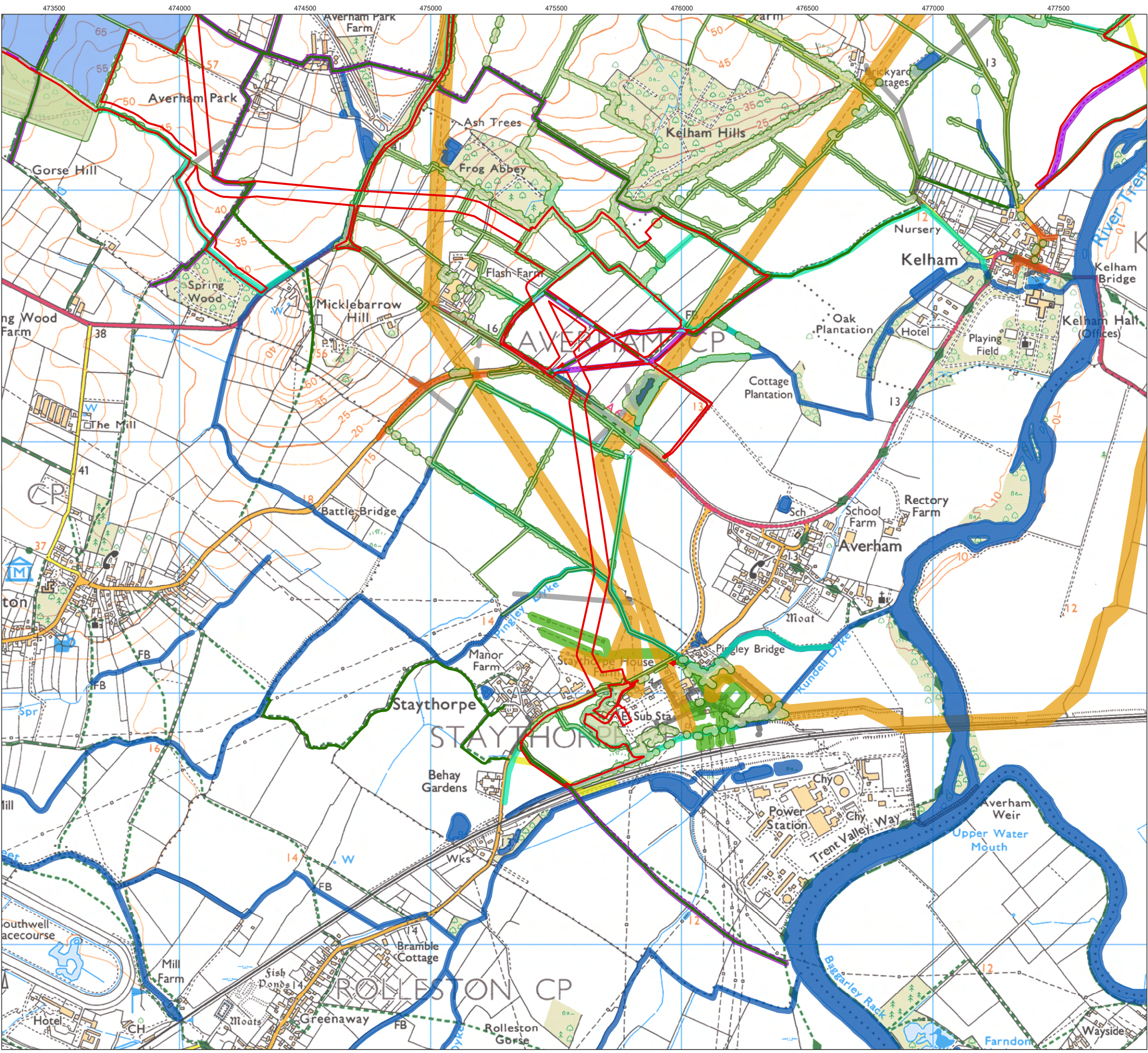
Great North Road Solar and Biodiversity Park

Environmental Statement

© Crown copyright and database rights 2025 Ordnance Survey AC0000808122. This drawing may contain: OS Open data / © Natural England / © DEFRA / © DECC / © Historic England/ public sector information licensed under the Open Government Licence v3.0. Aerial Photography. Nottinghamshire County Council 2025.



Notes: Root protection areas are established in the Arboricultural Impact Assessment (ES TAA8.12 [EN010162/APP/6.4.8.12]). The preliminary tree and hedgerow buffers which informed the initial design are shown in this figure. Areas of potential archaeological interest will be determined by a qualified archaeologist following completion of the work set out in the Archaeological Mitigation Strategy (ES TAA11.8 [EN010162/APP/6.4.11.8]).





 Order Limits

 Works No. 1 Solar PV

Constraints to Solar PV

 Preliminary Tree and Hedgerow Buffers

 30.6 m Buffer of Overhead 400 kV Electricity Line

 13.6 m Buffer of Overhead 132 kV Electricity Line

 11 m Buffer Overhead 33 kV Electricity Line

 8 m Buffer of Underground 11 kV Electricity Line

 8 m Buffer of Overhead 11 kV Electricity Line

 10 m Buffer of Watercourse

 10 m buffer of Waterbodies

 10 m Buffer of Gas Pipeline (medium/low pressure)

 10 m Buffer of Public Right of Way, Diverted Public Right of Way, and New Permissive Routes

 Public Rights of Way

 New Permissive Footpath

 New Permissive Bridleway

 Footpath Closure

 Footpath Diversion

 Bridleway Closed for Construction and Decommissioning

 Bridleway Diversion for Construction and Decommissioning



1:15,000    Scale @ A3



Ref: 026-ES-5.3    Date: 24/06/2025

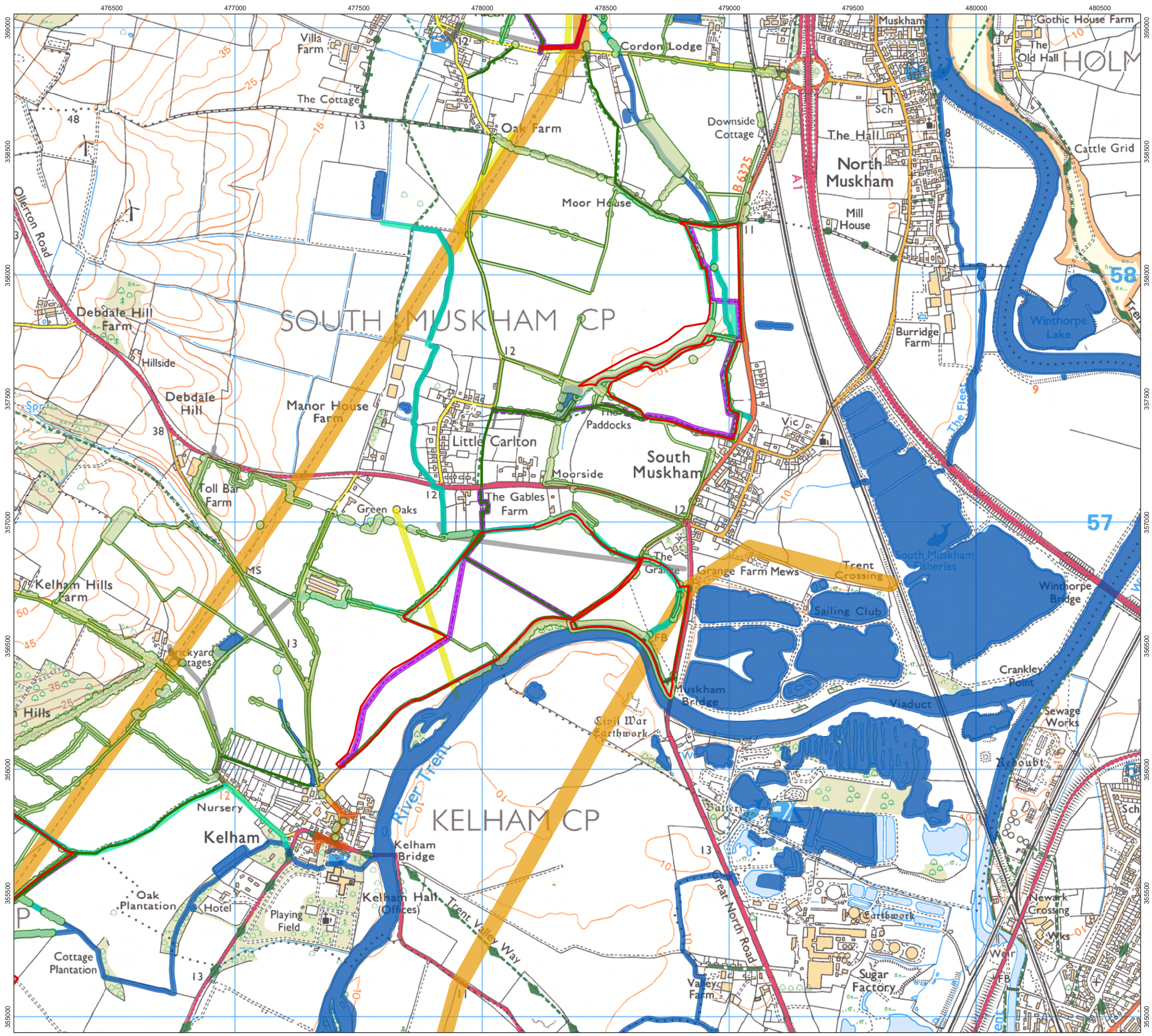
Environmental Constraints  
Figure 5.3(6)

Great North Road Solar and Biodiversity Park  
Environmental Statement

© Crown copyright and database rights 2025 Ordnance Survey AC0000808122. This drawing may contain: OS Open data / © Natural England / © DEFRA / © DECC / © Historic England/ public sector information licensed under the Open Government Licence v3.0. Aerial Photography. Nottinghamshire County Council 2025.



Notes: Root protection areas are established in the Arboricultural Impact Assessment (ES TAA8.12 [EN010162/APP/6.4.8.12]). The preliminary tree and hedgerow buffers which informed the initial design are shown in this figure. Areas of potential archaeological interest will be determined by a qualified archaeologist following completion of the work set out in the Archaeological Mitigation Strategy (ES TAA11.8 [EN010162/APP/6.4.11.8]).





Order Limits

Works No. 1 Solar PV

Constraints to Solar PV

Preliminary Tree and Hedgerow Buffers

30.6 m Buffer of Overhead 400 kV Electricity Line

13.6 m Buffer of Overhead 132 kV Electricity Line

11 m Buffer Overhead 33 kV Electricity Line

8 m Buffer of Underground 11 kV Electricity Line

8 m Buffer of Overhead 11 kV Electricity Line

10 m Buffer of Watercourse

10 m buffer of Waterbodies

10 m Buffer of Gas Pipeline (medium/low pressure)

10 m Buffer of Public Right of Way, Diverted Public Right of Way, and New Permissive Routes

Public Rights of Way

New Permissive Footpath

New Permissive Bridleway

Footpath Closure

Footpath Diversion

Bridleway Closed for Construction and Decommissioning

Bridleway Diversion for Construction and Decommissioning



1:15,000

Scale @ A3

0

125

250

500 m

Ref: 026-ES-5.3

Date: 24/06/2025

Environmental Constraints

Figure 5.3(7)

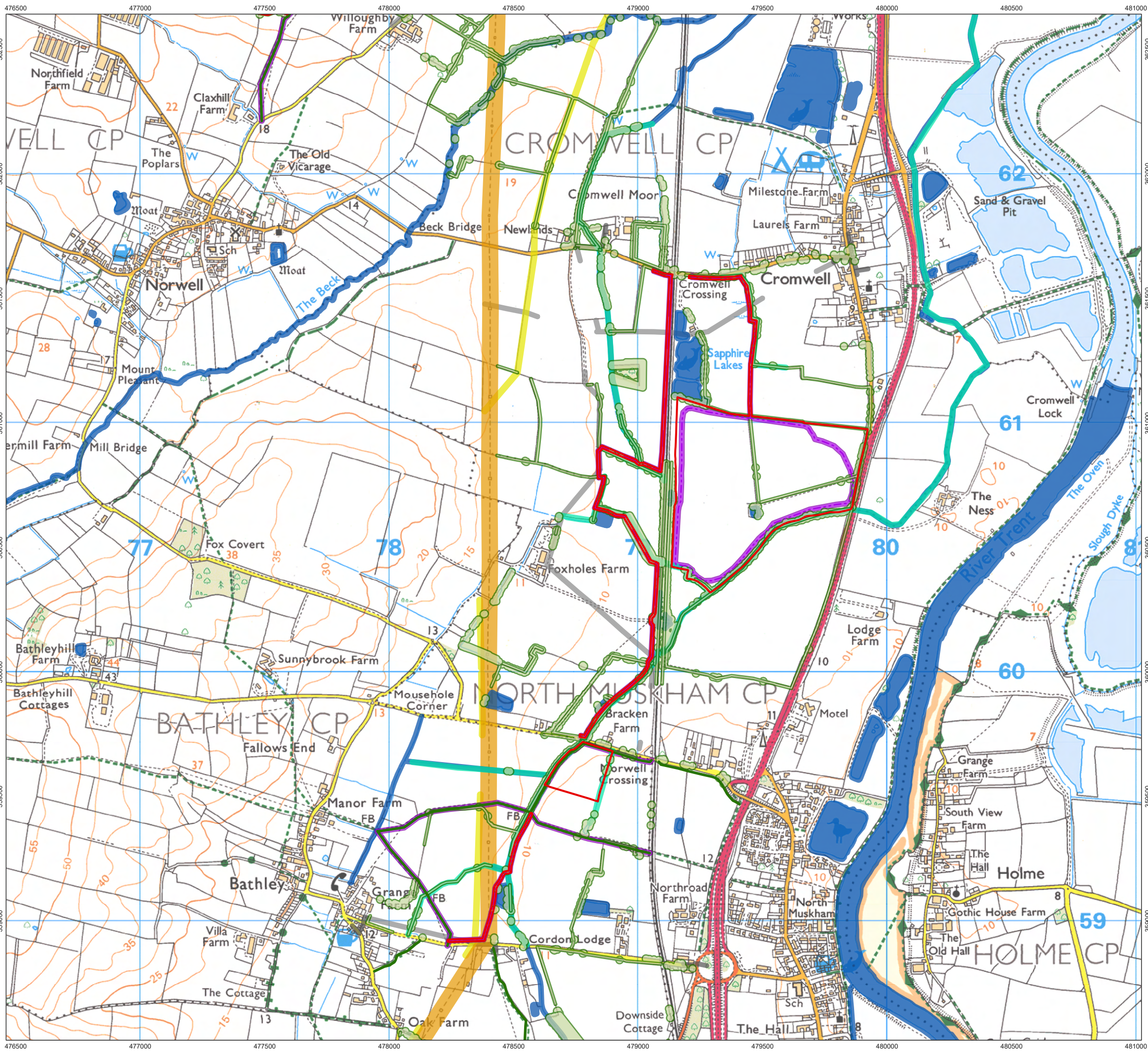
Great North Road Solar and Biodiversity Park

Environmental Statement

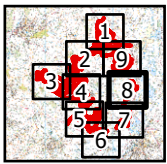
© Crown copyright and database rights 2025 Ordnance Survey AC0000808122. This drawing may contain: OS Open data / © Natural England / © DEFRA / © DECC / © Historic England/ public sector information licensed under the Open Government Licence v3.0. Aerial Photography. Nottinghamshire County Council 2025.



Notes: Root protection areas are established in the Arboricultural Impact Assessment (ES TAA8.12 [EN010162/APP/6.4.8.12]). The preliminary tree and hedgerow buffers which informed the initial design are shown in this figure. Areas of potential archaeological interest will be determined by a qualified archaeologist following completion of the work set out in the Archaeological Mitigation Strategy (ES TAA11.8 [EN010162/APP/6.4.11.8]).



- Order Limits
- Works No. 1 Solar PV
- Constraints to Solar PV
  - Preliminary Tree and Hedgerow Buffers
  - 30.6 m Buffer of Overhead 400 kV Electricity Line
  - 13.6 m Buffer of Overhead 132 kV Electricity Line
  - 11 m Buffer Overhead 33 kV Electricity Line
  - 8 m Buffer of Underground 11 kV Electricity Line
  - 8 m Buffer of Overhead 11 kV Electricity Line
  - 10 m Buffer of Watercourse
  - 10 m buffer of Waterbodies
  - 10 m Buffer of Gas Pipeline (medium/low pressure)
  - 10 m Buffer of Public Right of Way, Diverted Public Right of Way, and New Permissive Routes
- Public Rights of Way
- New Permissive Footpath
- New Permissive Bridleway
- Footpath Closure
- Footpath Diversion
- Bridleway Closed for Construction and Decommissioning
- Bridleway Diversion for Construction and Decommissioning



1:15,000 Scale @ A3

0125250500 m

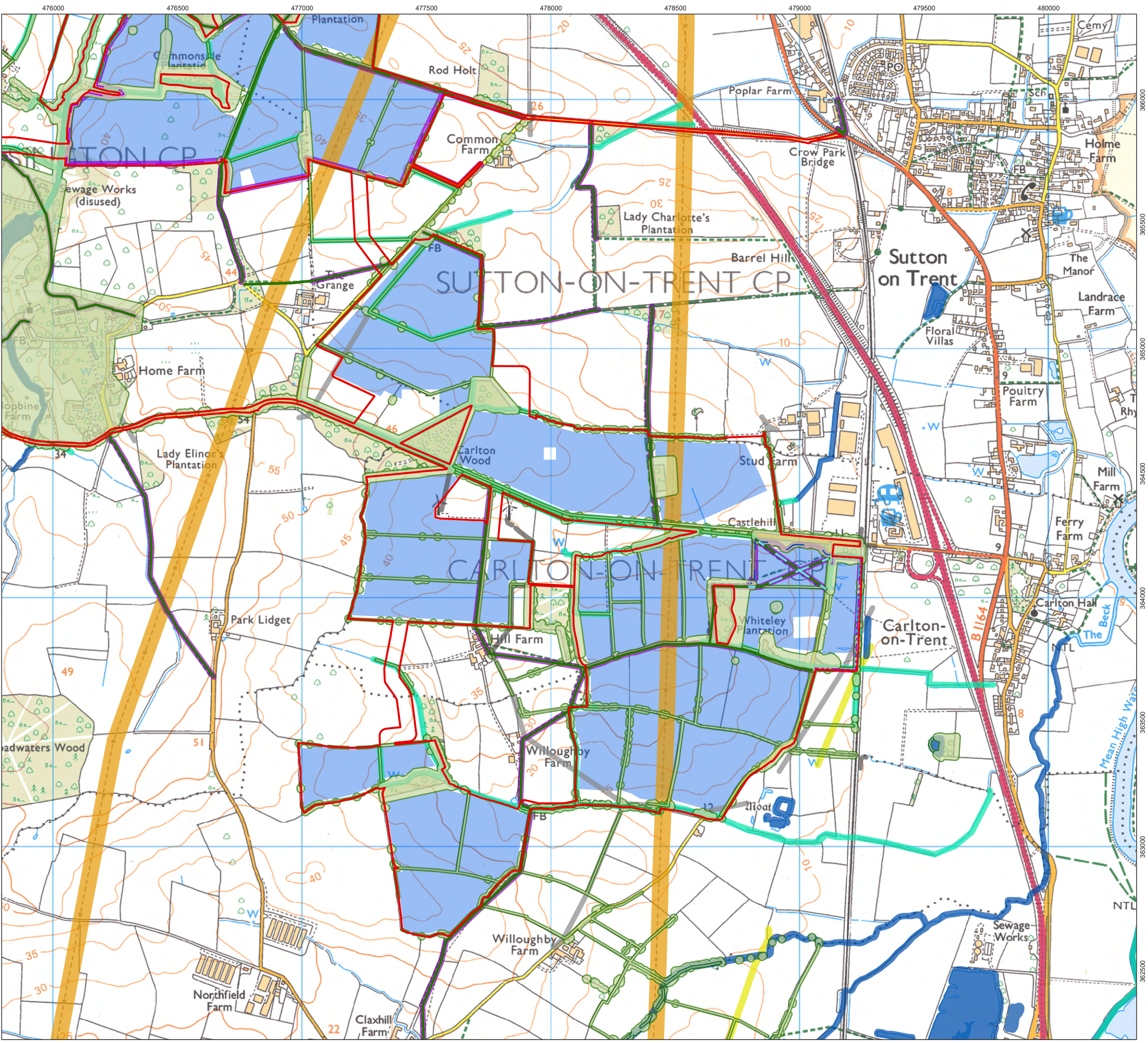
Ref: 026-ES-5.3Date: 24/06/2025

Environmental Constraints  
Figure 5.3(8)

Great North Road Solar and Biodiversity Park  
Environmental Statement



Notes: Root protection areas are established in the Arboricultural Impact Assessment (ES TAA8.12 [EN010162/APP/6.4.8.12]). The preliminary tree and hedgerow buffers which informed the initial design are shown in this figure. Areas of potential archaeological interest will be determined by a qualified archaeologist following completion of the work set out in the Archaeological Mitigation Strategy (ES TAA11.8 [EN010162/APP/6.4.11.8]).



Order Limits

Works No. 1 Solar PV

Constraints to Solar PV

Preliminary Tree and Hedgerow Buffers

30.6 m Buffer of Overhead 400 kV Electricity Line

13.6 m Buffer of Overhead 132 kV Electricity Line

11 m Buffer Overhead 33 kV Electricity Line

8 m Buffer of Underground 11 kV Electricity Line

8 m Buffer of Overhead 11 kV Electricity Line

10 m Buffer of Watercourse

10 m buffer of Waterbodies

10 m Buffer of Gas Pipeline (medium/low pressure)

10 m Buffer of Public Right of Way, Diverted Public Right of Way, and New Permissive Routes

Public Rights of Way

New Permissive Footpath

New Permissive Bridleway

Footpath Closure

Footpath Diversion

Bridleway Closed for Construction and Decommissioning

Bridleway Diversion for Construction and Decommissioning

1:15,000

Scale @ A3

0

125

250

500 m

Ref: 026-ES-5.3

Date: 24/06/2025

Environmental Constraints

Figure 5.3(9)

Great North Road Solar and Biodiversity Park

Environmental Statement

© Crown copyright and database rights 2025 Ordnance Survey AC0000808122. This drawing may contain: OS Open data / © Natural England / © DEFRA / © DECC / © Historic England/ public sector information licensed under the Open Government Licence v3.0. Aerial Photography. Nottinghamshire County Council 2025.