

- Order Limits
  - 500 m Operational Noise Study Area
  - Noise Monitoring Location
  - Assessment Location
  - Noise Sensitive Receptors within 500 m of the Order Limits
- Works Numbers
- Works No. 1 Solar PV
  - Works No. 4 Substations
  - Works No. 5A BESS
  - Works No. 5B 400kV Substation



1:32,000 Scale @ A3

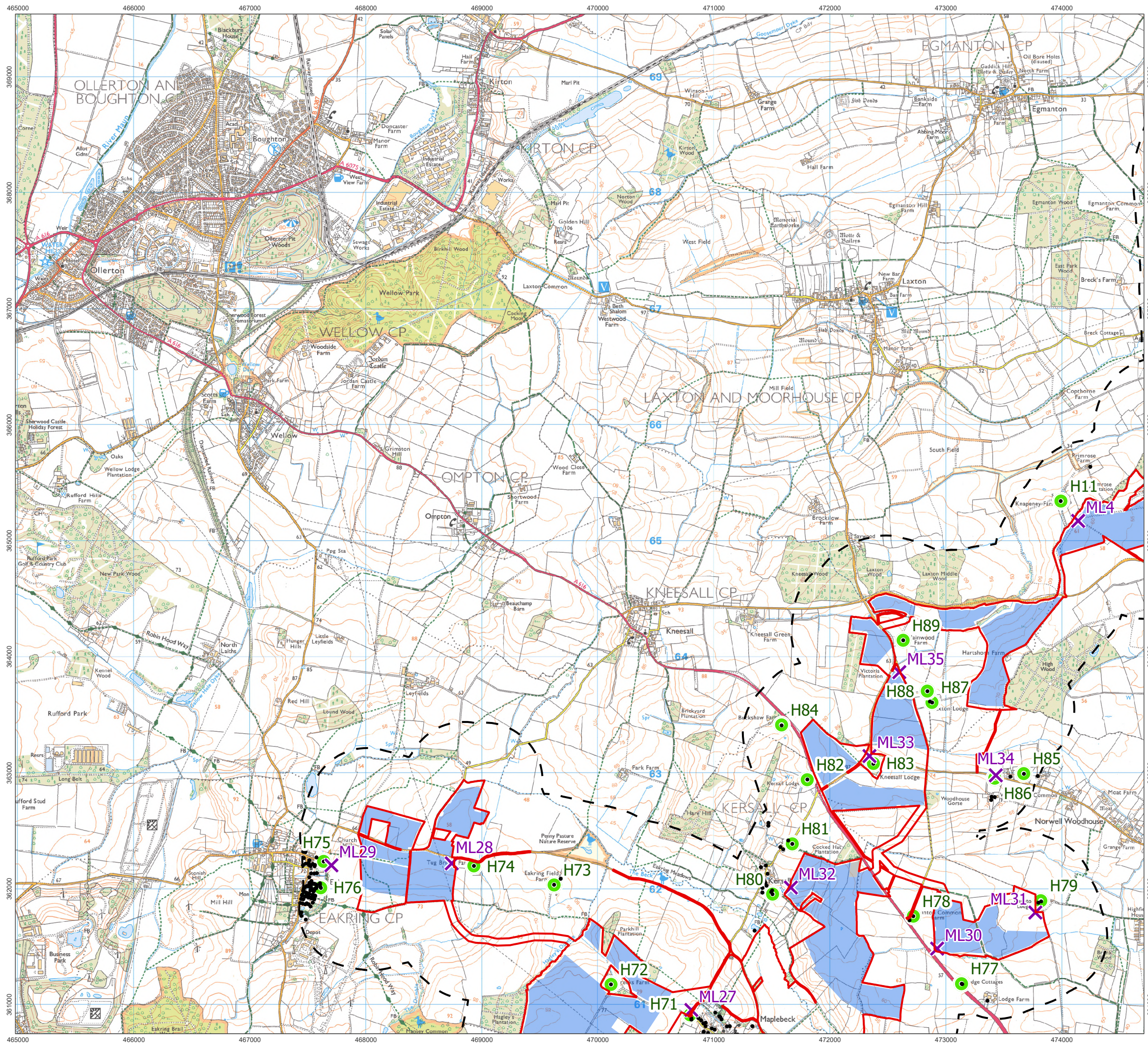
0 0.25 0.5 1 km

Ref: 026-ES-12.1 Date: 26/06/2025

Noise Sensitive Receptors and Monitoring Locations  
Figure 12.1NE

Great North Road Solar and Biodiversity Park  
Environmental Statement

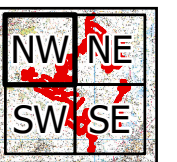




- Order Limits
- 500 m Operational Noise Study Area
- Noise Monitoring Location
- Assessment Location
- Noise Sensitive Receptors within 500 m of the Order Limits

#### Works Numbers

- Works No. 1 Solar PV
- Works No. 4 Substations
- Works No. 5A BESS
- Works No. 5B 400kV Substation



1:32,000 Scale @ A3

0 0.25 0.5 1 km

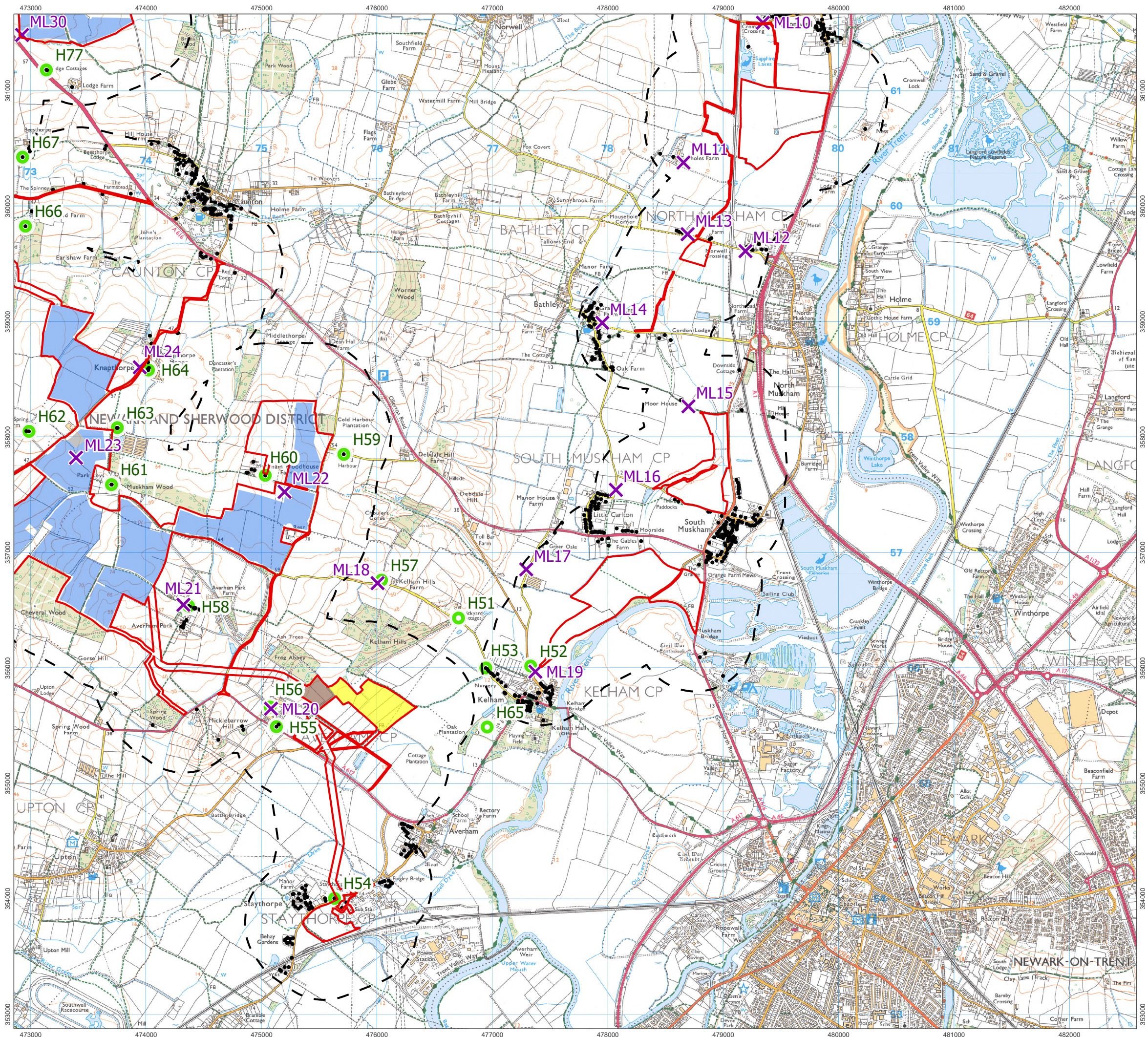
Ref: 026-ES-12.1

Date: 26/06/2025

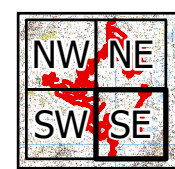
Noise Sensitive Receptors and Monitoring Locations  
Figure 12.1NW

Great North Road Solar and Biodiversity Park  
Environmental Statement





- Order Limits
  - 500 m Operational Noise Study Area
  - Noise Monitoring Location
  - Assessment Location
  - Noise Sensitive Receptors within 500 m of the Order Limits
- Works Numbers
- Works No. 1 Solar PV
  - Works No. 4 Substations
  - Works No. 5A BESS
  - Works No. 5B 400kV Substation



1:32,000 Scale @ A3

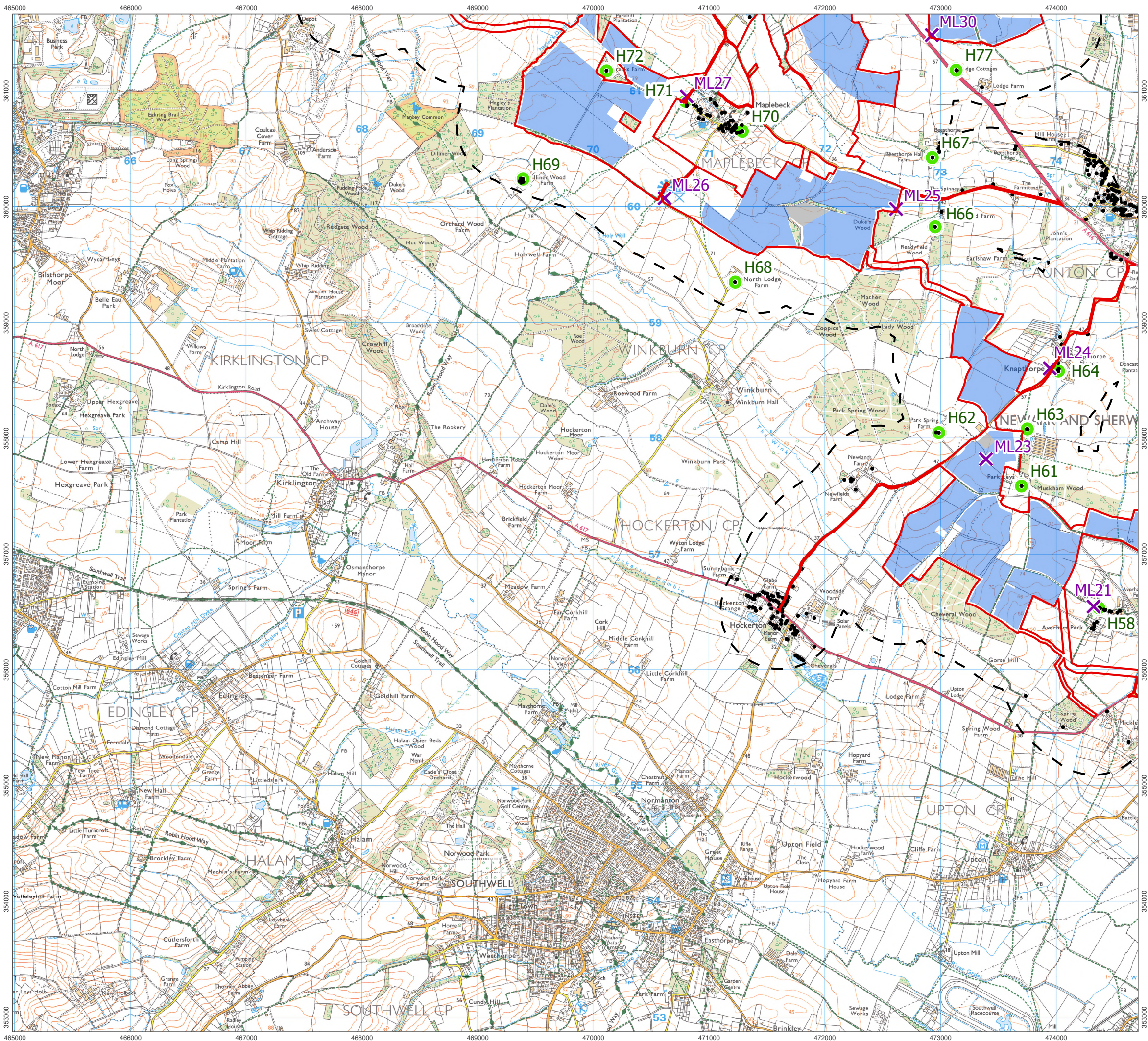
0 0.25 0.5 1 km

Ref: 026-ES-12.1 Date: 26/06/2025

Noise Sensitive Receptors and Monitoring Locations  
Figure 12.1SE

Great North Road Solar and Biodiversity Park  
Environmental Statement





- Order Limits
  - 500 m Operational Noise Study Area
  - Noise Monitoring Location
  - Assessment Location
  - Noise Sensitive Receptors within 500 m of the Order Limits
- Works Numbers
- Works No. 1 Solar PV
  - Works No. 4 Substations
  - Works No. 5A BESS
  - Works No. 5B 400kV Substation



1:32,000 Scale @ A3

0 0.25 0.5 1 km

Ref: 026-ES-12.1

Date: 26/06/2025

Noise Sensitive Receptors and Monitoring Locations  
Figure 12.1SW

Great North Road Solar and Biodiversity Park  
Environmental Statement