

Steeple Renewables' proposal incarcerates our village in SOLAR PANEL HELL. It COMPLETELY surrounds our village with chemical and rare earth - filled glass panels - see map. This is INHUMAN.

87% of the farmland proposed for use is BEST AND MOST VERSATILE land and SHOULD be used for food production!! HOW CAN THIS BE A FIT PLACE FOR A CHILD GROWING UP ???, for nature to thrive?? What a "legacy" for children - thousands of acres of redundant, long obsolete panels: the developers (RES) said they don't even put down funds for remediation until FIFTEEN YEARS AFTER THE START OF OPERATION!!!

Would YOU live SURROUNDED by 8ft high fences, 24hr year round surveillance, lights and noise?? WHY FORCE US TO DO SO??

Why subsidise large landowners and (foreign?) corporations with OUR tax money?? They'll install the "farm" then be long gone, having destroyed local agricultural jobs and homes, forced public rights-of-way into narrow paths between thousands of panels, and leaving us tax-payers to pick up the bill for remediation.

WHY is this government not training manufacturers, designers, engineers and technicians to fit solar panels to, and insulate, all suitable built surfaces, thereby creating real growth through many thousands of good jobs, and saving farmland for producing FOOD? (man's first need!!)

It makes NO SENSE to use valuable food-producing land for solar, in our small island: less land = more vulnerability, less security, HIGHER carbon costs in importing food!!!

THESE HUGE SOLAR FARMS ARE INHUMAN. TAKE COURAGE - BAN THEM, AND INSTEAD PUT SOLAR WHERE IT BELONGS - ON BUILDINGS ETC ETC.

DO NOT RUIN OUR COUNTRY - think of our growing generation and the HUNDREDS of THOUSANDS OF ACRES of former farmland, full of derelict panels, no longer producing food for a growing population while decreasing national security and resilience accordingly.

PLEASE DO NOT CONSENT TO THE STEEPLE RENEWABLES PROECT.

Ruth Edwards

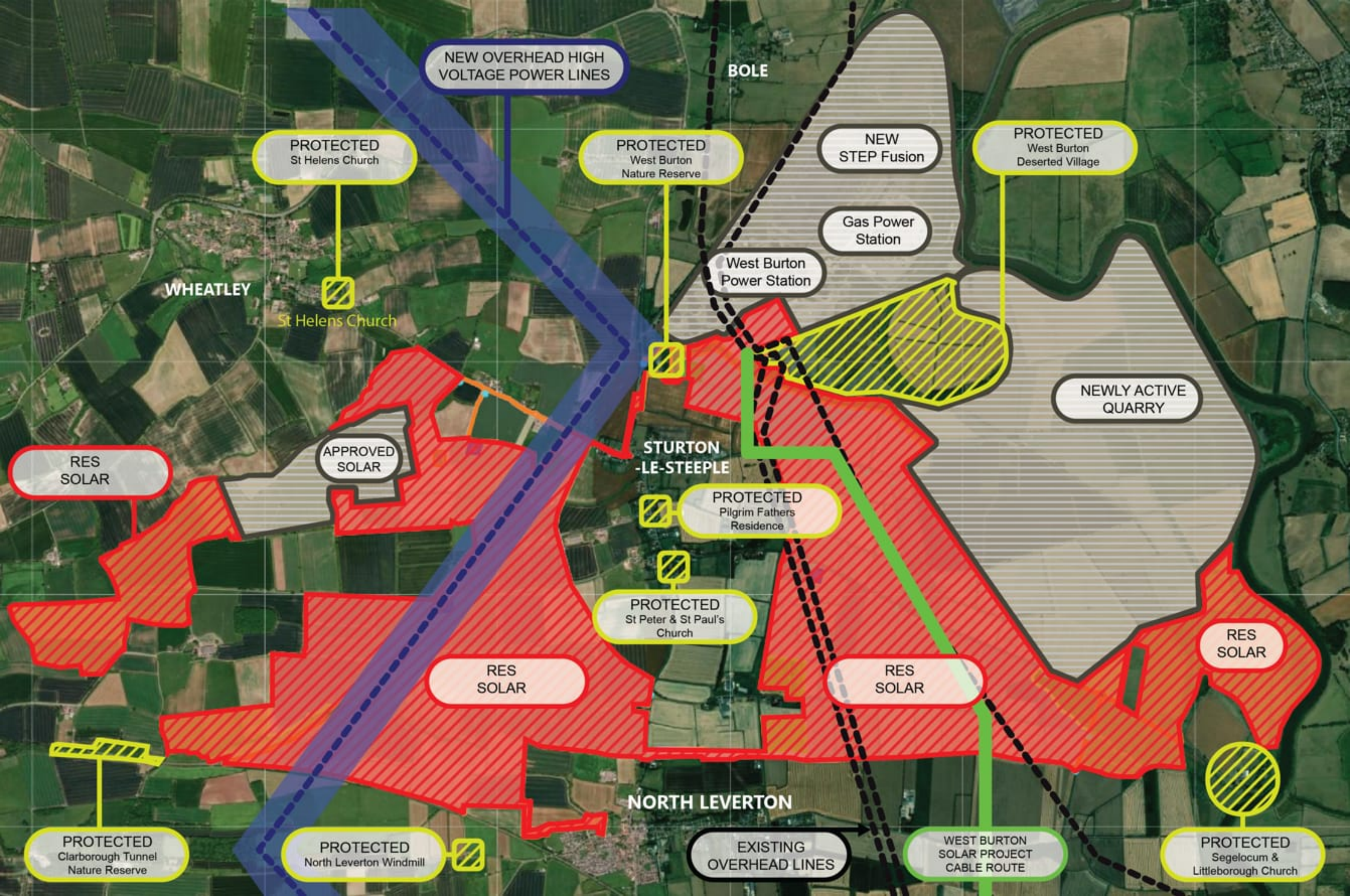


@yahoo.co.uk

Member, Fields For Farming.

This is an extended version of the address I made to the Enquiry at West Retford Hotel on 11th November. I am the Bassetlaw Planning Volunteer for the Campaign for the Protection of Rural England (CPRE) and it is CPRE's firm belief that solar should NOT be deployed on farmland whilst multiple alternative locations are available.





NEW OVERHEAD HIGH VOLTAGE POWER LINES

BOLE

PROTECTED  
St Helens Church

PROTECTED  
West Burton  
Nature Reserve

NEW  
STEP Fusion

PROTECTED  
West Burton  
Deserted Village

Gas Power  
Station

West Burton  
Power Station

WHEATLEY

St Helens Church

NEWLY ACTIVE  
QUARRY

RES  
SOLAR

APPROVED  
SOLAR

STURTON  
-LE-STEEPLE

PROTECTED  
Pilgrim Fathers  
Residence

PROTECTED  
St Peter & St Paul's  
Church

RES  
SOLAR

RES  
SOLAR

RES  
SOLAR

PROTECTED  
Clarborough Tunnel  
Nature Reserve

PROTECTED  
North Leverton Windmill

EXISTING  
OVERHEAD LINES

WEST BURTON  
SOLAR PROJECT  
CABLE ROUTE

PROTECTED  
Segelocum &  
Littleborough Church

NORTH LEVERTON



