



Connah's Quay Low Carbon Power

Indicative Site Layout

Planning Inspectorate Reference: EN010166

Document Reference: EN010166/APP/7.11

Planning Act 2008 (as amended)

Infrastructure Planning (Applications: Prescribed Forms and Procedure) Regulations 2009 - Regulation 5(2)(o)

Revision 00

August 2025

- KEY
- A

Up to two combined cycle gas turbine plants
- B

Up to two carbon dioxide capture plants
- C

Combined cycle gas turbine and carbon dioxide capture plant cooling and utilities infrastructure
- D

Natural gas reception facility
- E

Carbon dioxide interface facility
- F

Administration, control room and stores
- G

New surface water outfall
- H

Temporary contractor's cabins



© Crown Copyright 2025. All rights reserved. Ordnance Survey Licence AC0000808122



PROJECT
Connah's Quay Low Carbon Power

CONSULTANT
Garry Stewart Design Associates Ltd
01 Meadlake Place,
Thorpe Lea Road,
Egham, Surrey
TW20 8HE, United Kingdom
www.gsd.co.uk

- GENERAL NOTES
- ALL DIMENSIONS IN METRES UNLESS STATED OTHERWISE.
 - DO NOT SCALE FROM THIS DRAWING USE ONLY PRINTED DIMENSIONS.
 - THE INDICATIVE SITE LAYOUT AS SHOWN IS INDICATIVE ONLY AND WILL BE SUBJECT TO CHANGE AS PART OF DETAILED DESIGN DEVELOPMENT. ANY CHANGES WILL BE LIMITED TO WITHIN THE ORDER LIMITS AND WILL BE IN COMPLIANCE WITH THE WORKS PLANS (EN010166/APP/2.4), PARAMETER PLANS (EN010166/APP/2.5) AND OTHER APPROPRIATE PLANS OR CONSTRAINTS INCLUDED WITHIN THIS APPLICATION.
 - FOR DETAILS OF RETAINED AND PROPOSED LANDSCAPE, REFER TO INDICATIVE LANDSCAPE AND BIODIVERSITY PLAN: EN010166/APP/2.15

- LEGEND
- Order Limits
 - Landscaping

ISSUE/REVISION		
00	27/06/2025	FIRST ISSUE
I/R	DATE	DESCRIPTION

PROJECT NUMBER
60717119

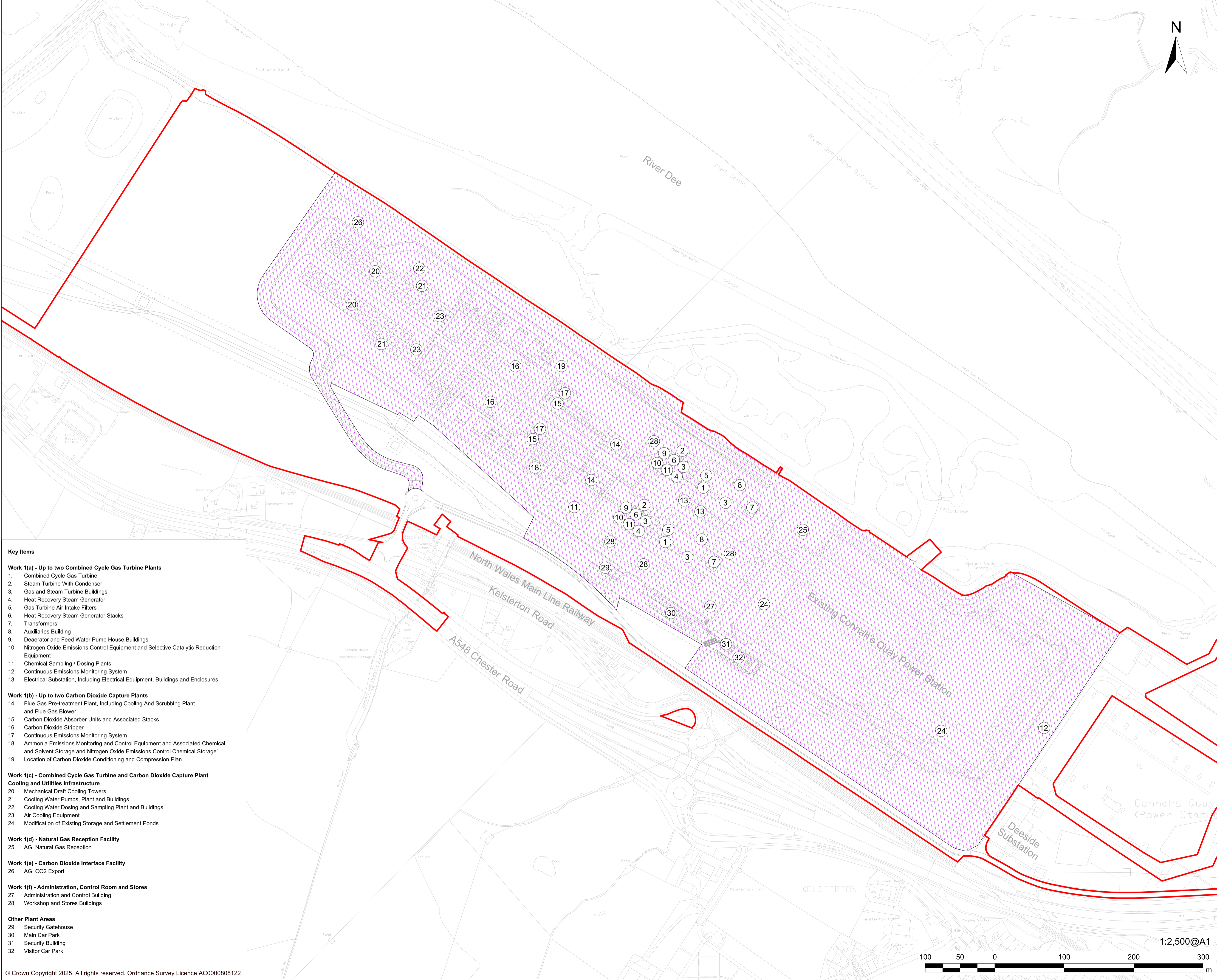
ISSUE PURPOSE
DCO Application

DATE
July 2025

SHEET TITLE
(Drawing 1 of 2)
Site Layout - Main Development Area

LEGISLATION REFERENCE
APFP Regulations 5(2)(o)

DOCUMENT REFERENCE NUMBER
EN010166/APP/7.11



- Key Items**
- Work 1(a) - Up to two Combined Cycle Gas Turbine Plants**
- Combined Cycle Gas Turbine
 - Steam Turbine With Condenser
 - Gas and Steam Turbine Buildings
 - Heat Recovery Steam Generator
 - Gas Turbine Air Intake Filters
 - Heat Recovery Steam Generator Stacks
 - Transformers
 - Auxiliaries Building
 - Deaerator and Feed Water Pump House Buildings
 - Nitrogen Oxide Emissions Control Equipment and Selective Catalytic Reduction Equipment
 - Chemical Sampling / Dosing Plants
 - Continuous Emissions Monitoring System
 - Electrical Substation, Including Electrical Equipment, Buildings and Enclosures
- Work 1(b) - Up to two Carbon Dioxide Capture Plants**
- Flue Gas Pre-treatment Plant, Including Cooling And Scrubbing Plant and Flue Gas Blower
 - Carbon Dioxide Absorber Units and Associated Stacks
 - Carbon Dioxide Stripper
 - Continuous Emissions Monitoring System
 - Ammonia Emissions Monitoring and Control Equipment and Associated Chemical and Solvent Storage and Nitrogen Oxide Emissions Control Chemical Storage
 - Location of Carbon Dioxide Conditioning and Compression Plant
- Work 1(c) - Combined Cycle Gas Turbine and Carbon Dioxide Capture Plant Cooling and Utilities Infrastructure**
- Mechanical Draft Cooling Towers
 - Cooling Water Pumps, Plant and Buildings
 - Cooling Water Dosing and Sampling Plant and Buildings
 - Air Cooling Equipment
 - Modification of Existing Storage and Settlement Ponds
- Work 1(d) - Natural Gas Reception Facility**
- AGI Natural Gas Reception
- Work 1(e) - Carbon Dioxide Interface Facility**
- AGI CO2 Export
- Work 1(f) - Administration, Control Room and Stores**
- Administration and Control Building
 - Workshop and Stores Buildings
- Other Plant Areas**
- Security Gatehouse
 - Main Car Park
 - Security Building
 - Visitor Car Park

PROJECT

Connah's Quay Low Carbon Power

CONSULTANT

Garry Stewart Design Associates Ltd
01 Meadlake Place,
Thorpe Lea Road,
Egham, Surrey
TW20 8HE, United Kingdom
www.gsd.co.uk

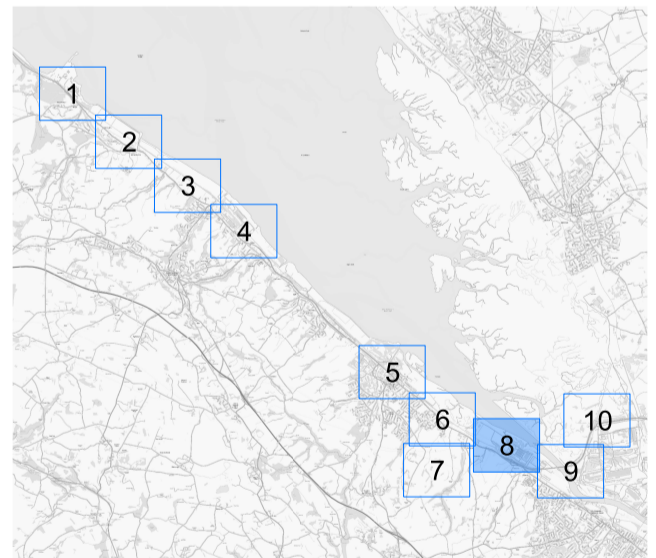
GENERAL NOTES

- ALL DIMENSIONS IN METRES UNLESS STATED OTHERWISE.
- DO NOT SCALE FROM THIS DRAWING USE ONLY PRINTED DIMENSIONS.
- THE INDICATIVE SITE LAYOUT AS SHOWN IS INDICATIVE ONLY AND WILL BE SUBJECT TO CHANGE AS PART OF DETAILED DESIGN DEVELOPMENT. ANY CHANGES WILL BE LIMITED TO WITHIN THE ORDER LIMITS AND WILL BE IN COMPLIANCE WITH THE WORKS PLANS (EN010166/APP/2.4), PARAMETER PLANS (EN010166/APP/2.5) AND OTHER APPROPRIATE PLANS OR CONSTRAINTS INCLUDED WITHIN THIS APPLICATION.
- WORK 1(G) AND WORK 1(H) ARE NOT SHOWN AS THESE REFER TO DEMOLITIONS OF EXISTING ASSETS AND SO WILL NOT BE PRESENT IN THE INDICATIVE SITE LAYOUT. WORK 1(I) IS NOT SHOWN AS THIS REFERS TO ANCILLARY WORKS FOR NUMEROUS AND VARIOUS TYPES OF MINOR STRUCTURES AND ASSETS WHICH MAY BE PRESENT ACROSS MULTIPLE LOCATIONS ACROSS THE INDICATIVE SITE LAYOUT AND IT IS NOT BENEFICIAL TO UNDERSTANDING OF THE INDICATIVE SITE LAYOUT TO DISPLAY IN FULL.

LEGEND

- Order Limits
- Work No. 1: Electricity Generating Station

LOCATION PLAN



ISSUE/REVISION

I/R	DATE	DESCRIPTION
00	27/06/2025	FIRST ISSUE

ISSUE PURPOSE

DCO Application

DATE

July 2025

PROJECT NUMBER

60717119

LEGISLATION REFERENCE

APFP Regulations 5(2)(o)

SHEET TITLE

Indicative Site Layout - Itemised
Sheet 8 (Drawing 2 of 2)

DOCUMENT REFERENCE NUMBER

EN010166/APP/7.11

This drawing has been prepared for the use of GSDA's client. It may not be used, modified, reproduced or relied upon by third parties, except as agreed by GSDA or as required by law. GSDA accepts no responsibility, and denies any liability whatsoever, to any party that uses or relies on this drawing without GSDA's express written consent. Do not scale this document.

