

Melissa Whitlock

From: CAWS <whitley.and.shaw@gmail.com>
Sent: 25 April 2026 15:21
To: Lime Down Solar
Cc: CAWS; [REDACTED]
Subject: CAWS Written Submission – Response to Examining Authority Request (21 April 2026)
Attachments: Cumulative Impact in Shaw and Whitley.pdf
Categories: Deadline submission

Dear Sir / Madam,

I write on behalf of Community Action: Whitley & Shaw (CAWS) in response to the Examining Authority's request made at the Lime Down Solar Park public hearing on 21 April 2026.

Please find attached a written submission entitled "*Clarification of Energy and Enabling Schemes and Their Cumulative Impact in Shaw, Whitley and the Wider Melksham Substation Area.*" This document provides further information regarding the number of schemes referenced by CAWS and the cumulative impact arising from them.

For ease of reference, the scheme data has been incorporated directly within the submission at Annex A. As explained in the document, the information has been compiled from publicly available sources, including NESO connection data, planning records and local knowledge, and reflects the position at the time of CAWS' Relevant Representation. The underlying analysis is drawn from CAWS' Working Group Body of Knowledge, which is referenced where appropriate.

An illustrative map is also included within the submission to assist the Examination in understanding the geographic distribution and clustering of development. This is provided as a visual aid and is not intended to be exhaustive.

We trust that this information is helpful to the Examination. Should the Examining Authority require any further clarification, CAWS would be pleased to assist.

Yours faithfully,

[REDACTED]

Interested Party Reference number: [REDACTED]

On behalf of Community Action: Whitley & Shaw (CAWS)



25 April 2026

CAWS Written Submission in Response to the Examining Authority

Clarification of Energy and Enabling Schemes and Their Cumulative Impact in Shaw, Whitley and the Wider Melksham Substation Area

Prepared in response to the Examining Authority's request at the Lime Down Solar Park public hearing, 21 April 2026

Introduction

CAWS referred at the public hearing on 21 April 2026 to 80 energy and enabling schemes affecting Shaw, Whitley, Melksham and the wider Melksham Substation area.

The table at Annex A identifies 87 separate scheme/component entries. Components have deliberately been shown separately because they give rise to different cumulative impacts. For example, a solar scheme, BESS compound, cable route and substation or grid works may be functionally connected, but they affect different receptors and operate through different pathways. Presenting them as a single scheme would therefore risk understating cumulative effects.

The list was compiled to the best of CAWS' ability from NESO connection data, planning records, consultation materials and local knowledge, and reflects the position at the time of CAWS' Relevant Representation. The underlying data, analysis and interpretation are set out in CAWS' Working Group Body of Knowledge (not submitted) and where appropriate has been cross-referenced within the CAWS Relevant Representation.

Scheme Composition

Category	Number of entries
Cable routes / cable works	33
Solar	19
BESS	18
Enabling works	8
Wind	3
Not known / unclear	6
Total	87

Scheme Status

Status	Number
Future NESO connection	36
Under consultation	24
Under construction	8
Operational	7
Planning submitted	5
Permission granted	4
Planned	3
Total	87

CAWS emphasises that this list is not limited to schemes that are currently the subject of planning applications. It includes schemes at various stages of development, including those embedded within the NESO connection queue, because these form part of the committed infrastructure trajectory and are therefore relevant to any lawful assessment of cumulative impact.

CAWS has not included other forms of development in this figure, including residential, employment, highways and other infrastructure schemes, notwithstanding that these draw upon the same finite local systems (including roads, drainage, flood storage, aquifers, emergency services, landscape capacity and community resilience) and therefore exacerbate cumulative impacts. These interactions are addressed in the CAWS' Working Group Body of Knowledge and Relevant Representation.

Illustrative map of scheme clustering

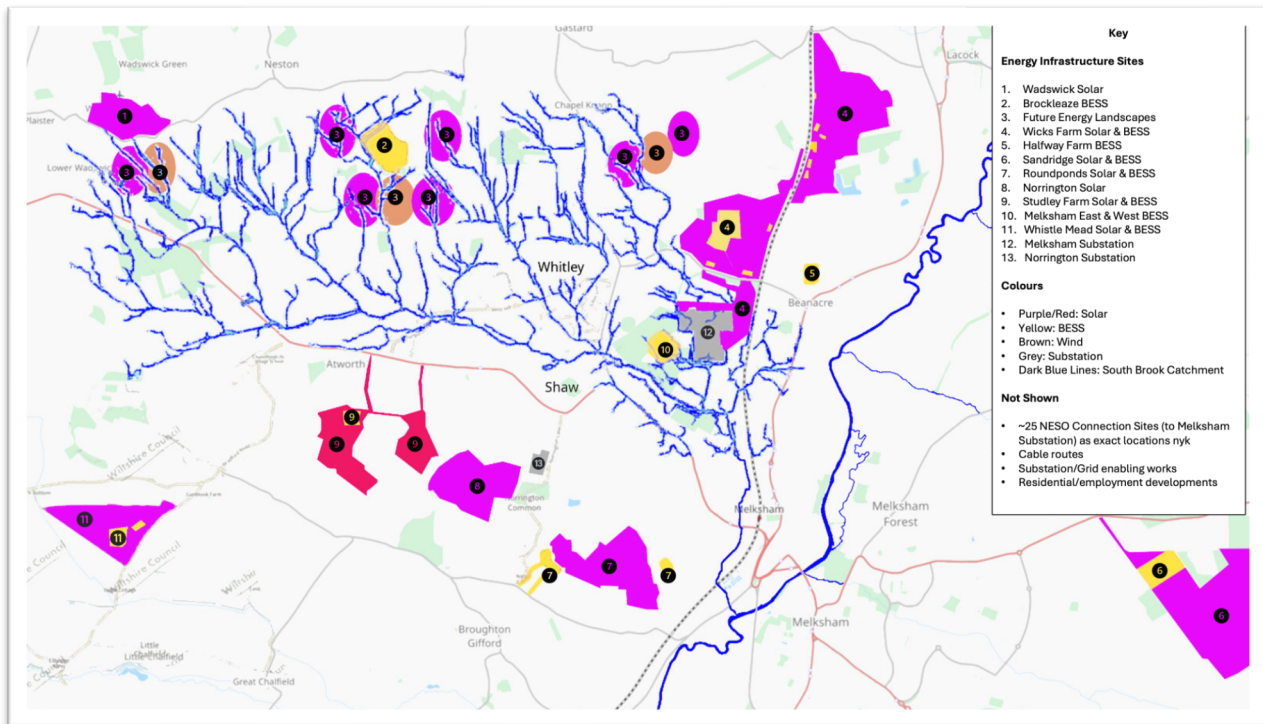


Figure 1: Illustrative map of energy and enabling schemes in the Shaw, Whitley and wider Melksham Substation area

CAWS provides an illustrative map to assist the Examination in understanding the geographic distribution and clustering of schemes.

This map is intended as a visual aid only and should be read alongside Annex A and the CAWS Relevant Representation.

For the avoidance of doubt:

- The map does not show all identified schemes
- It focuses on key and representative sites to demonstrate spatial relationships and clustering
- Cable routes, grid enabling works and some future NESO connection schemes are not fully mapped, either because precise routing/location data is not publicly available or because such schemes are not consistently defined in planning documentation
- Some scheme locations are indicative rather than exact, reflecting the level of detail available

The absence of a scheme from the map should not be taken to indicate that it is not part of the cumulative baseline.

The purpose of the map is not completeness, but to illustrate the concentration, interrelationship and spatial convergence of development that underpins CAWS' cumulative impact case.

Cumulative impact pathways

CAWS has identified 11 cumulative impact pathways, namely:

1. contamination
2. visual impact
3. hydrology
4. public health
5. noise
6. construction
7. public anxiety
8. grid-connection safety
9. emergency-response capacity
10. community burden
11. grid instability

These pathways are evidenced in the CAWS Working Group Body of Knowledge (not provided), and are referenced in the Relevant Representation. They demonstrate that different development components (for example, cable trenching versus operational BESS risk) act on different receptors, at different timescales, and through different mechanisms, and therefore must be assessed distinctly to avoid systematic underestimation of cumulative effects.

Data limitations and verification

CAWS notes that some duplication or uncertainty may exist within the underlying data. This reflects limitations and inconsistencies in publicly available datasets, including NESO and developer information, which have not always reconciled scheme identities, phasing, connection dates or responsible entities.

CAWS has made reasonable endeavours to verify the information, and any residual duplication does not materially affect the overall conclusion as to the scale and density of development.

Updated position since Relevant Representation

Since submission of the CAWS Relevant Representation, the position has continued to evolve. For example, Whist Mead was refused on 21 April 2026 by Wiltshire Council, citing cumulative impact, and some Future Energy Landscapes sites have been deselected following community feedback that included cumulative impact concerns.

Conclusion

CAWS' central point is not dependent on a precise scheme count. The evidence demonstrates a dense, functionally linked infrastructure cluster, where site-by-site assessment is inherently limited and risks understating cumulative effects.

The relevant question for the Examination is the combined pressure on shared and finite systems, rather than the status of individual schemes considered in isolation.

CAWS therefore invites the Examination to treat the "80 schemes" figure as evidence of an emerging cumulative infrastructure zone, supported by the Working Group Body of Knowledge and the CAWS Relevant Representation, rather than as a definitive or static list of individual developments.

Annex A

Energy and Enabling Schemes in Shaw, Whitley and the Wider Melksham Substation Area

Status	Operator (or Applicant) or Customer	Site/Project Name	Type
Future NESO Connection	Norrington Energy Storage Ltd	Bath Road BESS	BESS
Future NESO Connection	Norrington Energy Storage Ltd	Bath Road BESS	Cable
Future NESO Connection	Greenergy Renewables UK Limited	Beanacre 2 BESS (earlier connection date so assumed Phase 1)	BESS
Future NESO Connection	Greenergy Renewables UK Limited	Beanacre 2 BESS (earlier connection date so assumed Phase 1)	Cable
Future NESO Connection	Greenergy Renewables UK Limited	Beanacre 2 BESS (later connection date so assumed Phase 2)	BESS
Future NESO Connection	Greenergy Renewables UK Limited	Beanacre 2 BESS (later connection date so assumed Phase 2)	Cable
Future NESO Connection	Greenergy Renewables UK Limited	Beanacre BESS	Cable
Future NESO Connection	Greenergy Renewables UK Limited	Beanacre BESS	BESS
Future NESO Connection	SIRIUSECODEV (GASTARD) LTD	Gastard BESS	BESS
Future NESO Connection	SIRIUSECODEV (GASTARD) LTD	Gastard BESS	Cable
Future NESO Connection	Not Known	IBV NORRINGTON ENERGY PARK LTD(Parent Company: IB VOGT UK LTD), LAND TO THE WEST OF BEANACRE, NORRINGTON STATION	N/K
Future NESO Connection	Not Known	IBV NORRINGTON ENERGY PARK LTD(Parent Company: IB VOGT UK LTD), LAND TO THE WEST OF BEANACRE, NORRINGTON STATION	Cable
Future NESO Connection	JBM Solar 13 - Melksham	JBM Solar 13 - Melksham - 50 MW so assumed Phase 2	Solar
Future NESO Connection	JBM Solar 13 - Melksham	JBM Solar 13 - Melksham - 50 MW so assumed Phase 1	Solar
Future NESO Connection	JBM Solar 13 - Melksham	JBM Solar 13 - Melksham (Phase 1)	Cable
Future NESO Connection	JBM Solar 13 - Melksham	JBM Solar 13 - Melksham (Phase 2)	Cable
Future NESO Connection	LIME DOWN SOLAR PARK LIMITED	Melksham	Cable
Future NESO Connection	Not Known	Melksham	Solar
Future NESO Connection	Not Known	Melksham	Cable
Future NESO Connection	Not Known	Melksham	N/K
Future NESO Connection	ELEMENTS GREEN LIMITED	Melksham BESS	BESS
Future NESO Connection	JEPIPHANY LIMITED	Melksham Grid Park BESS	BESS
Future NESO Connection	JEPIPHANY LIMITED	Melksham Grid Park PV	Solar
Future NESO Connection	JEPIPHANY LIMITED	Melksham Grid Park PV	Cable
Future NESO Connection	ELEMENTS GREEN LIMITED	Melksham PV	Solar
Future NESO Connection	ELEMENTS GREEN LIMITED	Melksham PV	Cable
Future NESO Connection	Queequeg Renewables Ltd	Melkshem (Cartridge Farm)	BESS
Future NESO Connection	Queequeg Renewables Ltd	Melkshem (Cartridge Farm)	Cable
Future NESO Connection	ADV 004 LIMITED	Norrington Gate	N/K
Future NESO Connection	ADV 004 LIMITED	Norrington Gate	Cable
Future NESO Connection	Not Known	Pathfinder Clean Energy (PACE) UKDev Ltd, Land North of Bath Road (Southbrook)	N/K
Future NESO Connection	Not Known	Pathfinder Clean Energy (PACE) UKDev Ltd, Land North of Bath Road (Southbrook)	Cable
Future NESO Connection	JBM Solar Ltd	South Brook (40MW)	N/K
Future NESO Connection	JBM Solar Ltd	South Brook (40MW)	Cable
Future NESO Connection	JBM Solar Ltd	Southbrook (38MW)	N/K
Future NESO Connection	JBM Solar Ltd	Southbrook (38MW)	Cable
Operational	Statera Energy / Melksham East Storage	Melksham Substation East Storage	BESS
Operational	Statera Energy / Melksham West Storage	Melksham Substation West Storage	BESS
Operational	N/K	Norrington Solar Farm	Solar
Operational	HC ESS3 LIMITED	Roundponds Farm BESS	BESS
Operational	Foresight Solar Ltd	Sandridge BESS	BESS
Operational	Foresight Solar Ltd	Sandridge Solar	Solar
Operational	N/K	Wadswick Solar Farm	Solar
Permission Granted	ADV 003 Limited	Norrington Gate Farm, Broughton Gifford - Battery Energy Storage Facility	BESS
Permission Granted	Melksham Calne Green Ltd/Verdant Energy	Studley Farm - Battery Storage	BESS
Permission Granted	Melksham Calne Green Ltd/Verdant Energy	Studley Farm - Solar Farm	Solar
Permission Granted	Melksham Calne Green Ltd/Verdant Energy	Studley Farm - Solar Farm	Cable
Planned	National Grid	Bellmouth Access to Melksham Substation from Westlands Lane	Enabling Works
Planned	National Grid	Cotswold Visual Impact Provision (VIP) scheme to Melksham substation	Enabling Works
Planned	National Grid	Hinkley Connection to Melksham substation	Enabling Works
Planning Submitted	Greenergy	Brockleaze	BESS
Planning Submitted	Greenergy	Brockleaze	Cable
Planning Submitted	Abel Energy	Whistle Mead , Little Chalfield	Cable
Planning Submitted	Abel Energy	Whistle Mead , Little Chalfield - BESS	BESS
Planning Submitted	Abel Energy	Whistle Mead Solar Farm	Solar
Under Construction	National Grid	Bramley to Melksham substation overhead line upgrade	Enabling Works
Under Construction	National Grid	Melksham Substation - Grid Park extension	Enabling Works
Under Construction	National Grid	Melksham Substation Shunt Reactor	Enabling Works
Under Construction	SSEN	Norrington Spring Park Advanced Duct Lay Scheme to Melksham substation	Enabling Works
Under Construction	National Grid	North Wessex Downs Visual Impact Provision (VIP) scheme to Melksham substation	Enabling Works
Under Construction	JBM Solar Projects (now RWE)	Wick Farm, Melksham Substation	BESS
Under Construction	JBM Solar Projects (now RWE)	Wick Farm, Melksham Substation	Solar
Under Construction	JBM Solar Projects (now RWE)	Wick Farm, Melksham Substation	Cable
Under Consultation	Wiltshire Council/CSE	Future Energy Landscape Site SB	Solar
Under Consultation	Wiltshire Council/CSE	Future Energy Landscape Site SB	Cable
Under Consultation	Wiltshire Council/CSE	Future Energy Landscape Site SD	Solar
Under Consultation	Wiltshire Council/CSE	Future Energy Landscape Site SD	Cable
Under Consultation	Wiltshire Council/CSE	Future Energy Landscape Site SE	Solar
Under Consultation	Wiltshire Council/CSE	Future Energy Landscape Site SE	Cable
Under Consultation	Wiltshire Council/CSE	Future Energy Landscape Site SF	Solar
Under Consultation	Wiltshire Council/CSE	Future Energy Landscape Site SF	Cable
Under Consultation	Wiltshire Council/CSE	Future Energy Landscape Site SH	Solar
Under Consultation	Wiltshire Council/CSE	Future Energy Landscape Site SH	Cable
Under Consultation	Wiltshire Council/CSE	Future Energy Landscape Site SJ	Solar
Under Consultation	Wiltshire Council/CSE	Future Energy Landscape Site SJ	Cable
Under Consultation	Wiltshire Council/CSE	Future Energy Landscape Site SK	Solar
Under Consultation	Wiltshire Council/CSE	Future Energy Landscape Site SK	Cable
Under Consultation	Wiltshire Council/CSE	Future Energy Landscape Site SL	Solar
Under Consultation	Wiltshire Council/CSE	Future Energy Landscape Site SL	Cable
Under Consultation	Wiltshire Council/CSE	Future Energy Landscape Site WA	Wind
Under Consultation	Wiltshire Council/CSE	Future Energy Landscape Site WA	Cable
Under Consultation	Wiltshire Council/CSE	Future Energy Landscape Site WB	Wind
Under Consultation	Wiltshire Council/CSE	Future Energy Landscape Site WB	Cable
Under Consultation	Wiltshire Council/CSE	Future Energy Landscape Site WC	Wind
Under Consultation	Wiltshire Council/CSE	Future Energy Landscape Site WC	Cable
Under Consultation	Enray Power	Halfway Farm	BESS
Under Consultation	Enray Power	Halfway Farm	Cable