



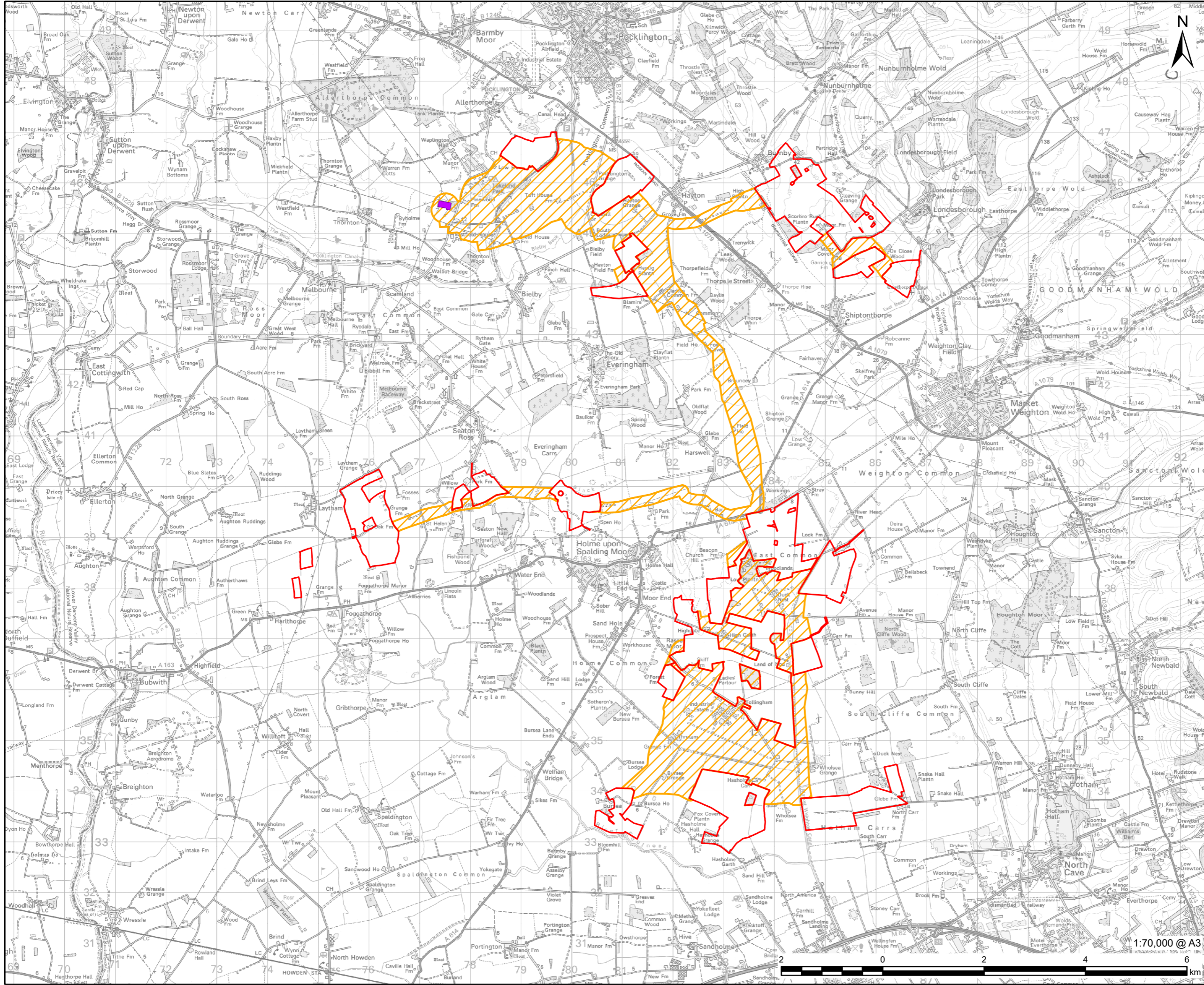
Environmental Impact Assessment Scoping Report

EN0110032

Figures Part 1: 1-1 to 7-4

Part 1	
Figure 1-1	Site Location and Scoping Site Boundary
Figure 1-2	Site Boundary and Land Use
Figure 3-1	Humberhead Sites Field Boundaries
Figure 3-2	Environmental Constraints
Figure 7-1	Study Area Landscape and Visual Appraisal (LVIA)
Figure 7-2	Aerial Photography
Figure 7-3	Landform
Figure 7-4	Landscape Character Areas
Part 2	
Figure 7-5	Landscape Receptors
Figure 7-6	Visual Receptors
Figure 7-7	Flood Risk
Figure 7-8	Agricultural Land Classification
Figure 7-9	Bare Earth Zone of Theoretical Visibility
Figure 7-10	Augmented Zone of Theoretical Visibility
Figure 7-11	Private Receptors
Figure 7-12	Public Receptors
Figure 7-13	Transport Receptors
Part 3	
Figure 7-14	Viewpoints
Figure 8-1	Internationally Statutory Designated Sites
Figure 8-2	National Statutory Designated Sites
Figure 8-3	SSSI Impact Risk Zone
Figure 8-4	Non-Statutory Designated Sites
Figure 8-5	Non-Breeding Bird survey plans for the Humberhead Sites - Overview
Figure 9-1	Surface Water Receptors and their Attributes
Part 4	
Figure 9-2	Ground Water Receptors and their Attributes
Figure 9-3	Fluvial Flood Risk
Figure 9-4	Surface Water Flood Risk (Sheets 1-2)
Part 5	
Figure 9-4	Surface Water Flood Risks (Sheets 3-6)
Figure 9-5	Catchment Plan for Surface Water Framework Directive (WFD) Waterbodies
Part 6	
Figure 10-1	Designated Heritage Assets
Figure 10-2	Non-Designated Heritage Assets
Part 7	
Figure 11-1	Transport Study Area
Figure 11-2	Public Rights of Way

Part 7	
Figure 12-1	Noise and Vibration Study Areas, Sensitive Receptors and Noise Monitoring Locations
Figure 14-1-1	Air Quality Monitoring Locations under the Responsibility of the Local Authority
Figure 14-1-2	Air Quality Study Area
Figure 14-2-1	Predictive Agriculture Land Classification
Figure 14-2-2	Soil Associations



AECOM

PROJECT

HUMBERHEAD SOLAR

CLIENT

Island GREEN POWER

CONSULTANT

AECOM Limited
3 Rivergate
Bristol, BS1 6EW
www.aecom.com

LEGEND

Scoping Site Boundary

- Humberhead Sites
- Cable Route Search Corridor
- Existing National Grid Thornton Substation

NOTES

© Crown copyright and database rights 2026
Ordnance Survey AC0000808122.

FIGURE TITLE

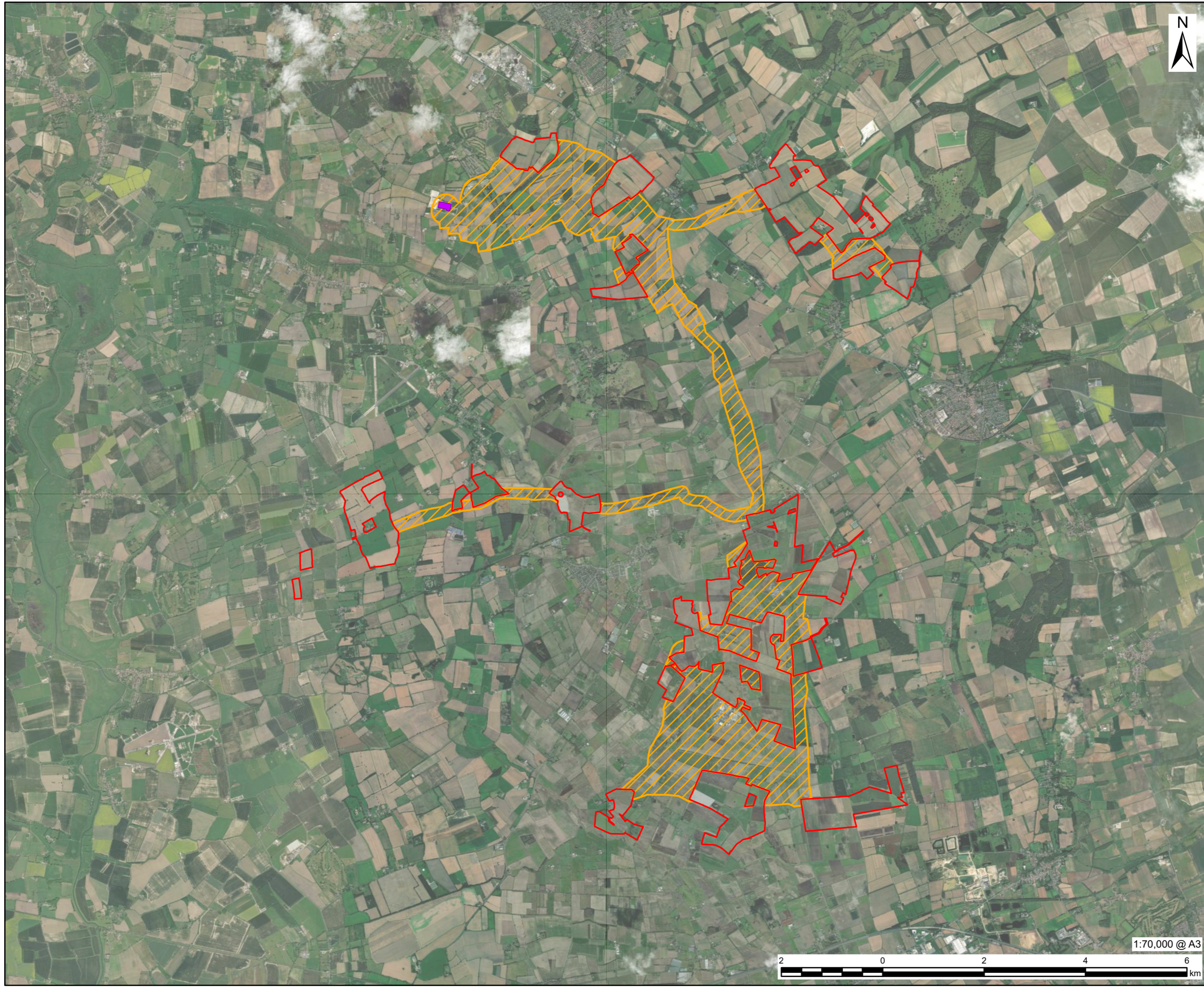
Site Location and Scoping Site Boundary

FIGURE NUMBER

Figure 1-1



This drawing has been prepared for the use of AECOM's client. It may not be used, modified, reproduced or relied upon by third parties, except as agreed by AECOM or as required by law. AECOM accepts no responsibility, and denies any liability whatsoever, to any party that uses or relies on this drawing without AECOM's express written consent. Do not scale this document. All measurements must be obtained from the stated dimensions.



AECOM

PROJECT
HUMBERHEAD SOLAR

CLIENT
 Island
GREEN POWER

CONSULTANT
 AECOM Limited
 3 Rivergate
 Bristol, BS1 6EW
 www.aecom.com

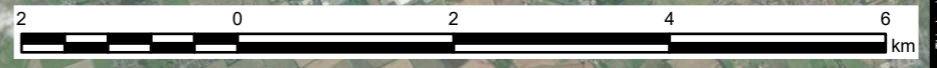
LEGEND
Scoping Site Boundary
 Humberhead Sites
 Cable Route Search Corridor
 Existing National Grid Thornton Substation

NOTES
 Earthstar Geographics

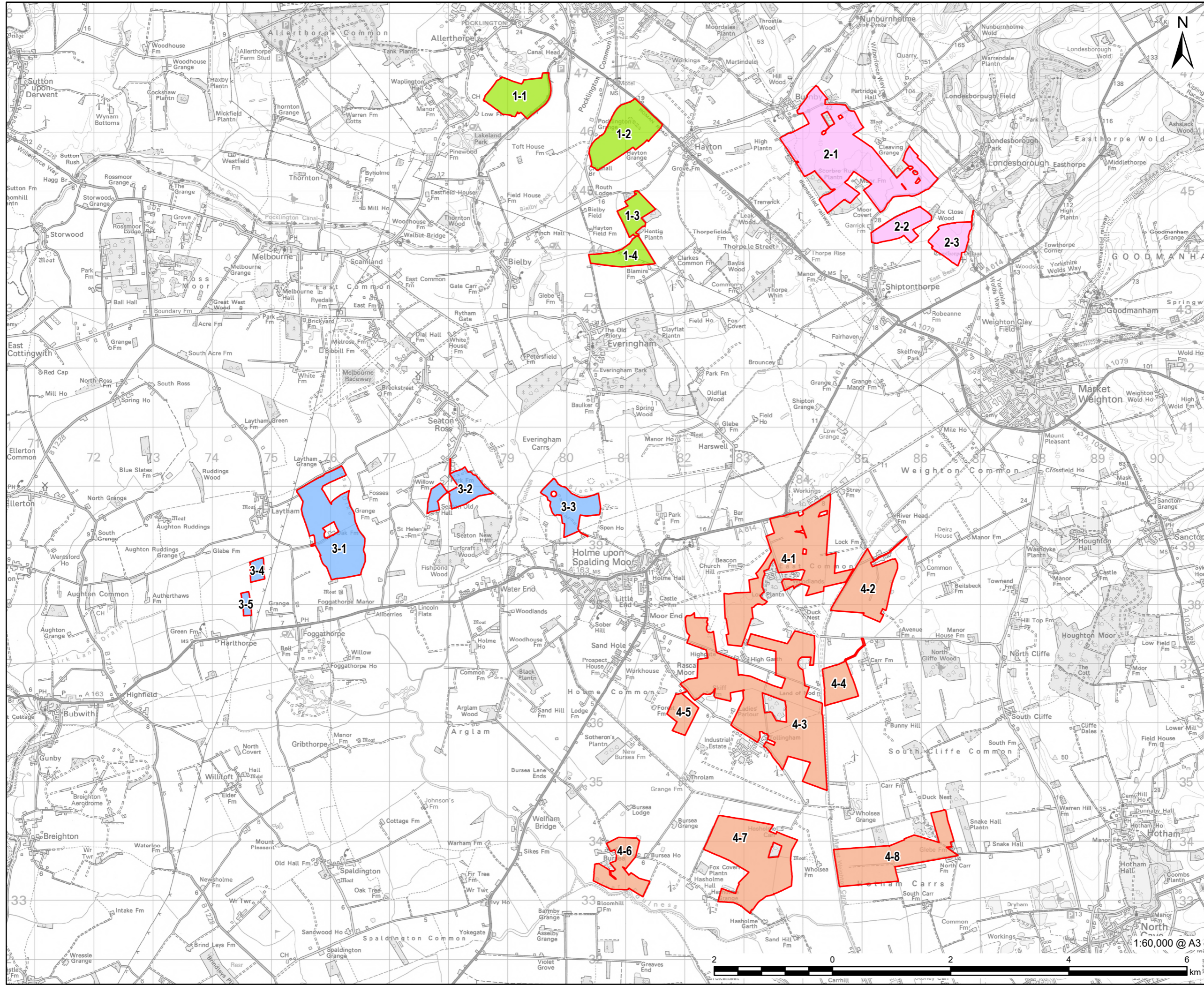
FIGURE TITLE
 Site Boundary and Land Use

FIGURE NUMBER
 Figure 1-2

1:70,000 @ A3



This drawing has been prepared for the use of AECOM's client. It may not be used, modified, reproduced or relied upon by third parties, except as agreed by AECOM or as required by law. AECOM accepts no responsibility, and denies any liability whatsoever, to any party that uses or relies on this drawing without AECOM's express written consent. Do not scale this document. All measurements must be obtained from the stated dimensions.

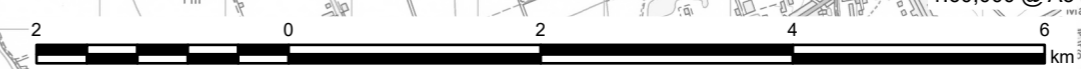


- Humberhead Sites
- Humberhead 1
- Humberhead 2
- Humberhead 3
- Humberhead 4

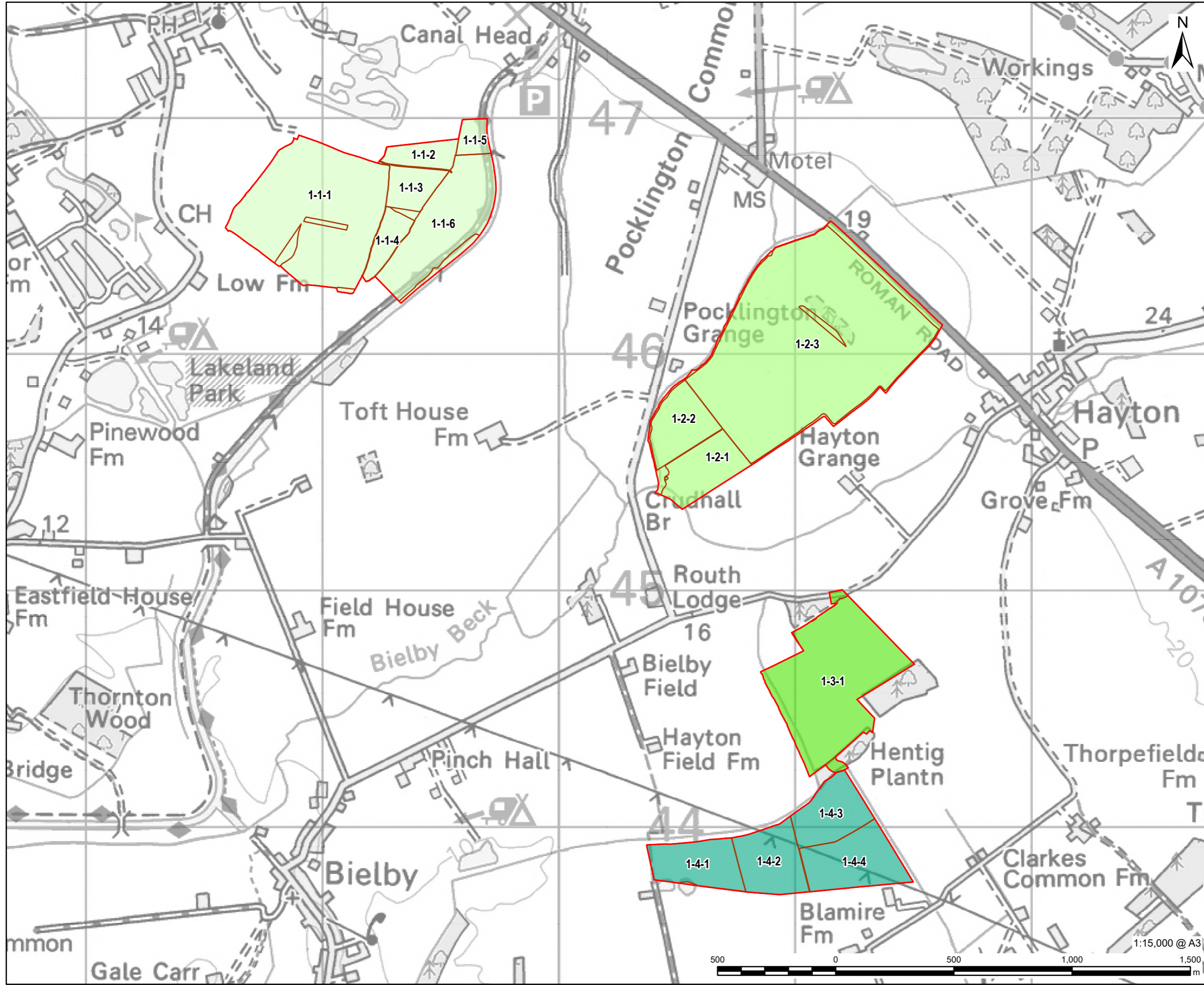
© Crown copyright and database rights 2026
 Ordnance Survey AC0000808122.

Humberhead Sites Field Boundaries -
 Overview

Figure 3-1-1



This drawing has been prepared for the use of AECOM's client. It may not be used, modified, reproduced or relied upon by third parties, except as agreed by AECOM or as required by law. AECOM accepts no responsibility, and denies any liability whatsoever, to any party that uses or relies on this drawing without AECOM's express written consent. Do not scale this document. All measurements must be obtained from the stated dimensions.



LEGEND

	Humberhead Sites
	Field Parcel
	Humberhead 1-1
	Humberhead 1-2
	Humberhead 1-3
	Humberhead 1-4

NOTES

© Crown copyright and database rights 2026
Ordnance Survey AC0000808122.

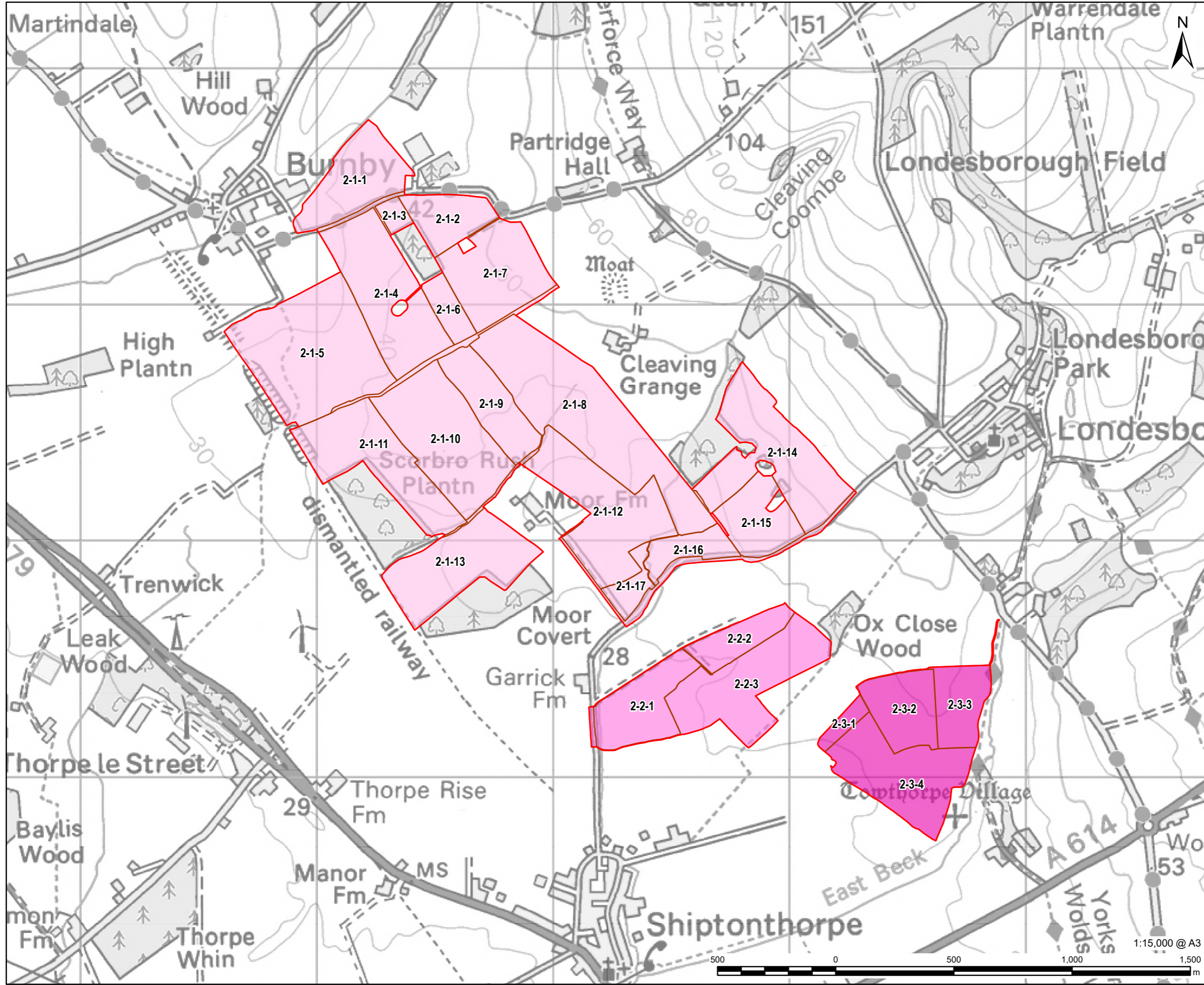
FIGURE TITLE

Humberhead Sites Field Boundaries -
Humberhead 1

FIGURE NUMBER

Figure 3-1-2

This drawing has been prepared for the use of AECOM's client. It may not be used, modified, reproduced or relied upon by third parties, except as agreed by AECOM or as required by law. AECOM accepts no responsibility, and denies any liability whatsoever, to any party that uses or relies on this drawing without AECOM's express written consent. Do not scale this document. All measurements must be obtained from the stated dimensions.



AECOM
 PROJECT
HUMBERHEAD SOLAR
 CLIENT
 Island GREEN POWER
 CONSULTANT
 AECOM Limited
 3 Rivergate
 Bristol, BS1 6EW
 www.aecom.com

LEGEND

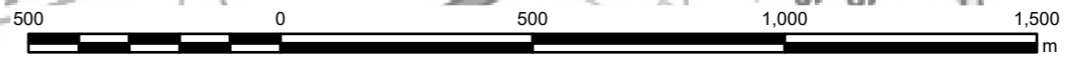
- Humberhead Sites
- Field Parcel
- Humberhead 2-1
- Humberhead 2-2
- Humberhead 2-3

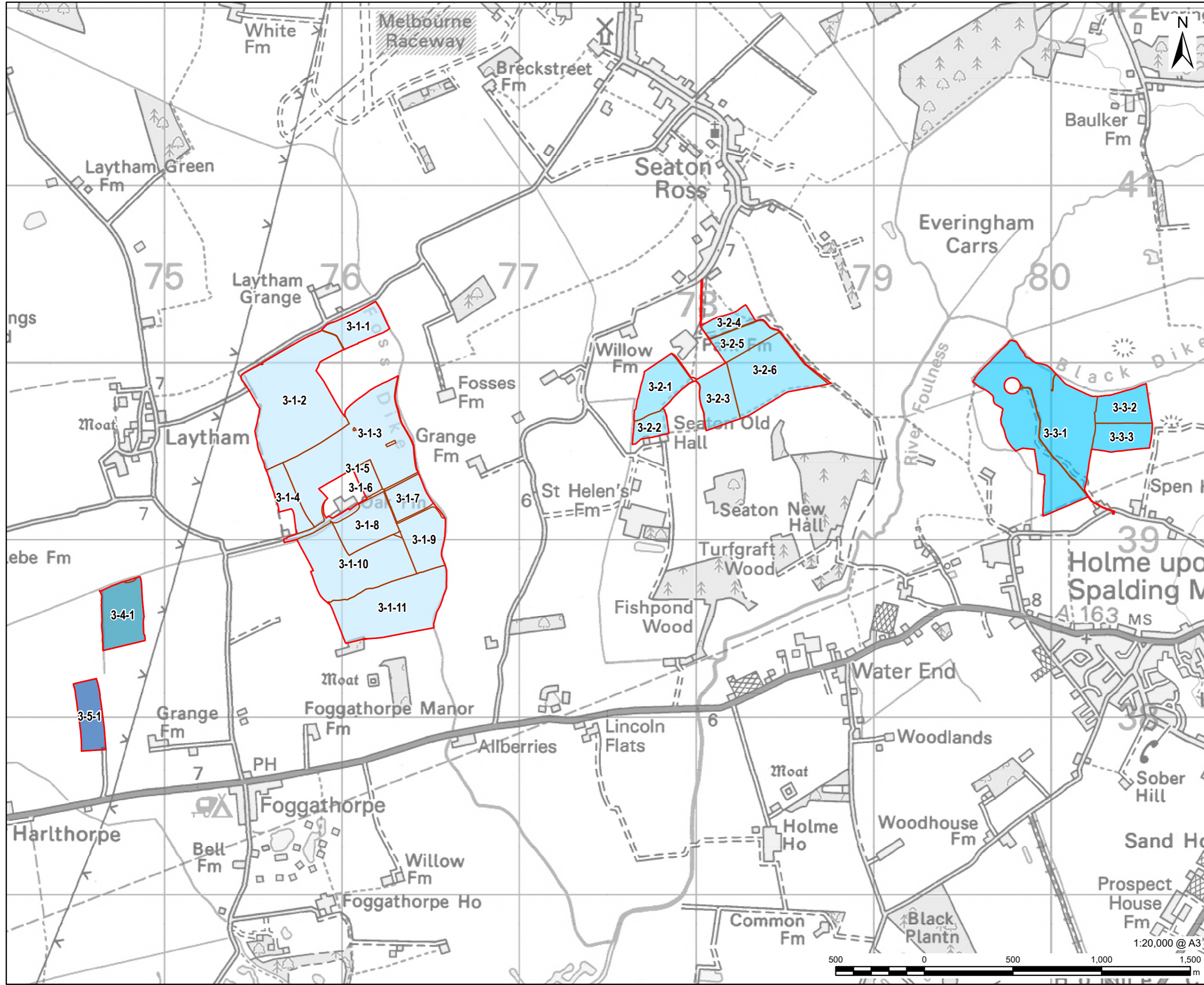
NOTES
 © Crown copyright and database rights 2026
 Ordnance Survey AC0000808122.

FIGURE TITLE
 Humberhead Sites Field Boundaries -
 Humberhead 2

FIGURE NUMBER
 Figure 3-1-3

This drawing has been prepared for the use of AECOM's client. It may not be used, modified, reproduced or relied upon by third parties, except as agreed by AECOM or as required by law. AECOM accepts no responsibility, and denies any liability whatsoever, to any party that uses or relies on this drawing without AECOM's express written consent. Do not scale this document. All measurements must be obtained from the stated dimensions.





LEGEND

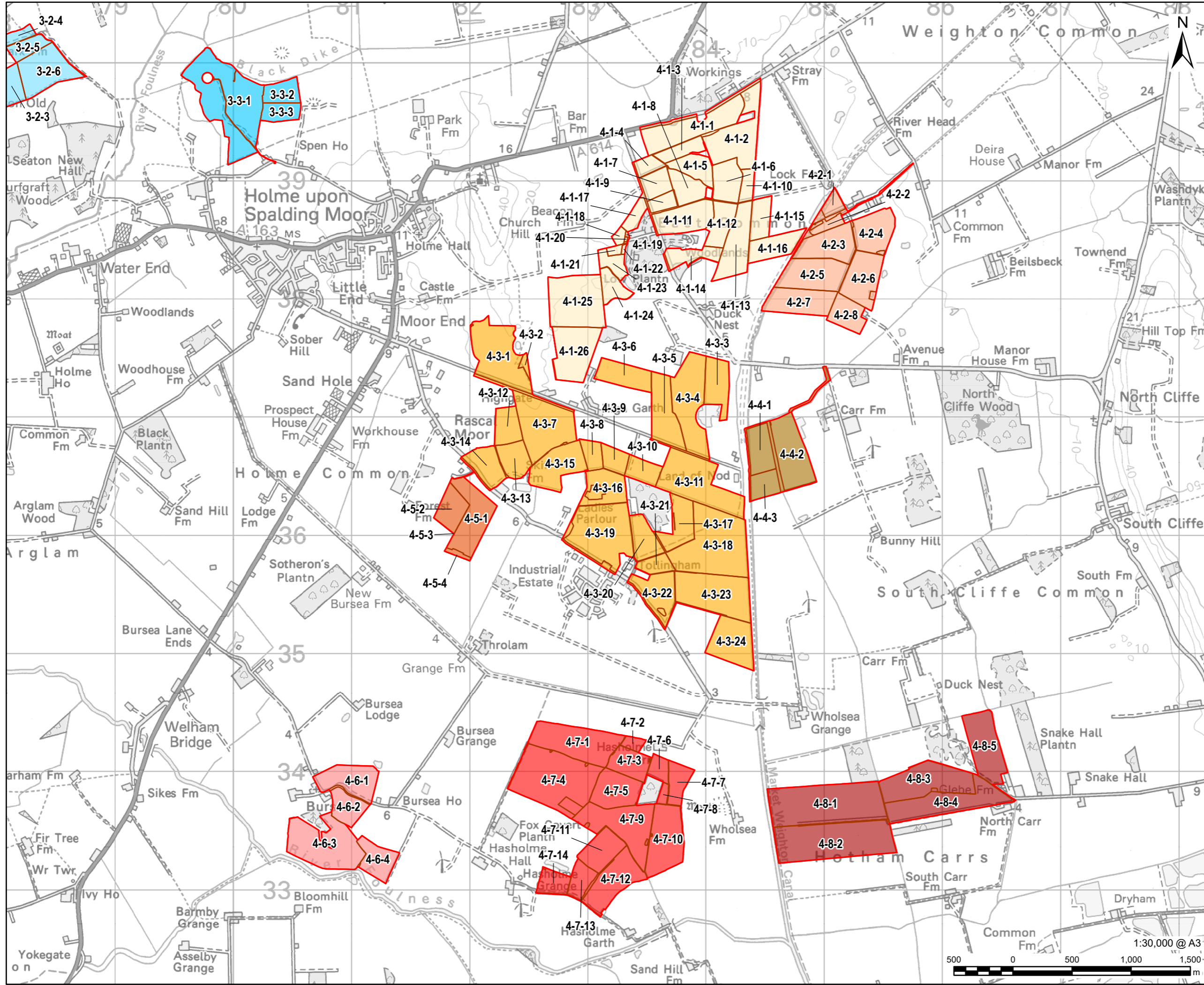
	Humberhead Sites
	Field Parcel
	Humberhead 3-1
	Humberhead 3-2
	Humberhead 3-3
	Humberhead 3-4
	Humberhead 3-5

NOTES
© Crown copyright and database rights 2026
Ordnance Survey AC0000808122.

FIGURE TITLE
Humberhead Sites Field Boundaries -
Humberhead 3

FIGURE NUMBER
Figure 3-1-4

This drawing has been prepared for the use of AECOM's client. It may not be used, modified, reproduced or relied upon by third parties, except as agreed by AECOM or as required by law. AECOM accepts no responsibility, and denies any liability whatsoever, to any party that uses or relies on this drawing without AECOM's express written consent. Do not scale this document. All measurements must be obtained from the stated dimensions.



AECOM

PROJECT

HUMBERHEAD SOLAR

CLIENT

Island **GREEN POWER**

CONSULTANT

AECOM Limited
3 Rivergate
Bristol, BS1 6EW
www.aecom.com

LEGEND

- Humberhead Sites
- Field Parcel
- Humberhead 3-2
- Humberhead 3-3
- Humberhead 4-1
- Humberhead 4-2
- Humberhead 4-3
- Humberhead 4-4
- Humberhead 4-5
- Humberhead 4-6
- Humberhead 4-7
- Humberhead 4-8

NOTES

© Crown copyright and database rights 2026
Ordnance Survey AC0000808122.

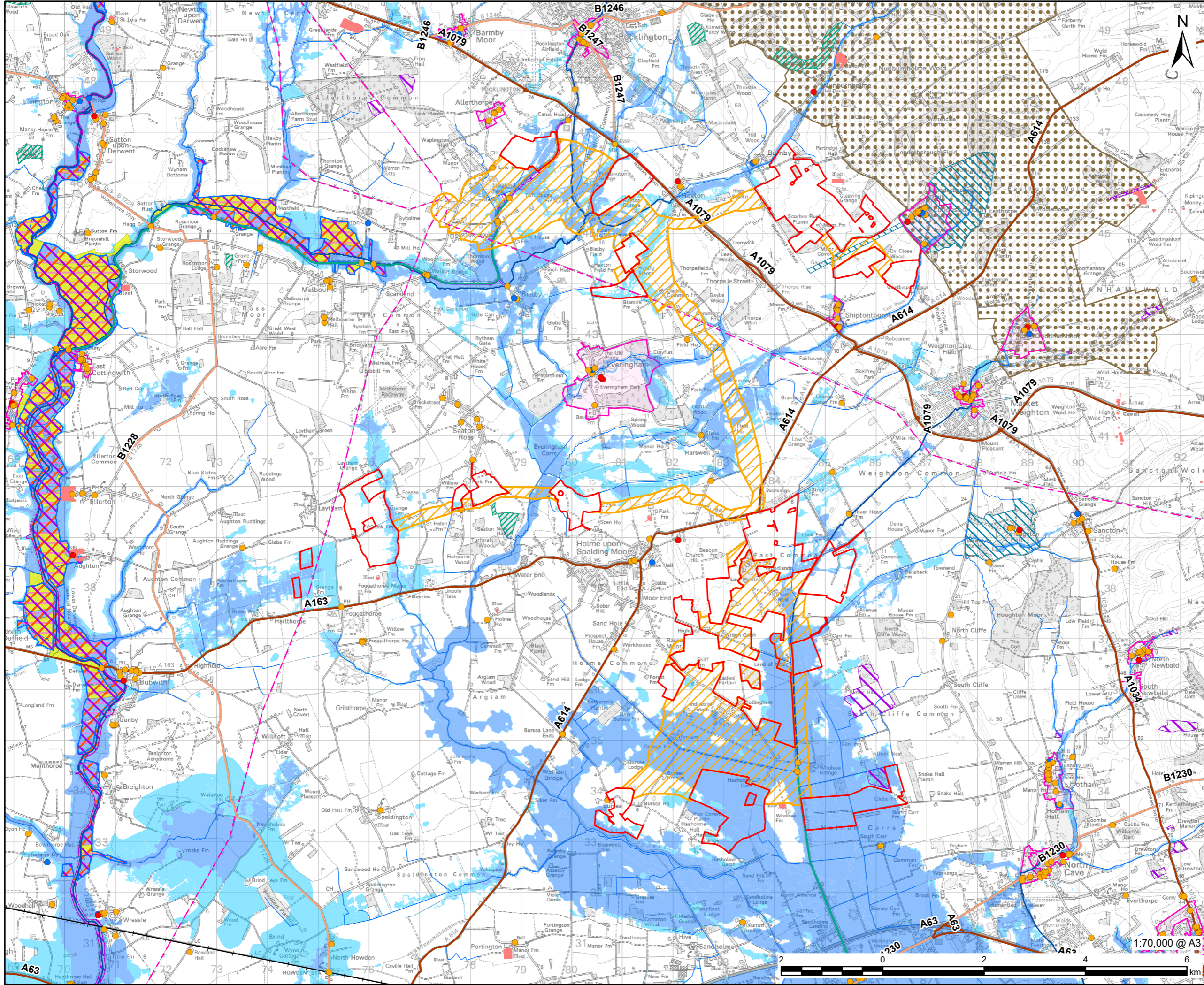
FIGURE TITLE

Humberhead Sites Field Boundaries -
Humberhead 4

FIGURE NUMBER

Figure 3-1-5

This drawing has been prepared for the use of AECOM's client. It may not be used, modified, reproduced or relied upon by third parties, except as agreed by AECOM or as required by law. AECOM accepts no responsibility, and denies any liability whatsoever, to any party that uses or relies on this drawing without AECOM's express written consent. Do not scale this document. All measurements must be obtained from the stated dimensions.



AECOM

PROJECT

HUMBERHEAD SOLAR

CLIENT

Island GREEN POWER

CONSULTANT

AECOM Limited
3 Rivergate
Bristol, BS1 6EW
www.aecom.com

LEGEND

Scoping Site Boundary

- Humberhead Sites
- Cable Route Search Corridor
- Listed Building - Grade I
- Listed Building - Grade II*
- Listed Building - Grade II
- Main River
- Canal
- Other Watercourses
- Scheduled Monument
- Registered Parks and Garden
- Conservation Area
- Flood Zone 2
- Flood Zone 3
- A Road
- B Road
- +— Railway
- - - 400kV Overhead Line
- National Nature Reserve (NNR)
- Ancient Woodland
- Special Protection Area (SPA)
- Special Area of Conservation (SAC)
- Site of Special Scientific Interest (SSSI)
- Ramsar Site
- Proposed Yorkshire Wolds National Landscape

NOTES

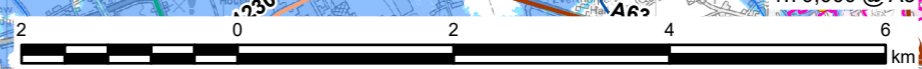
© Crown copyright and database rights 2026
Ordnance Survey AC0000808122.
© Natural England copyright. Contains
Ordnance Survey data © Crown copyright
and database right 2026.
© Historic England 2026 and for spatial data
only add Contains Ordnance Survey data ©
Crown copyright and database right 2026.
© National Grid UK

FIGURE TITLE

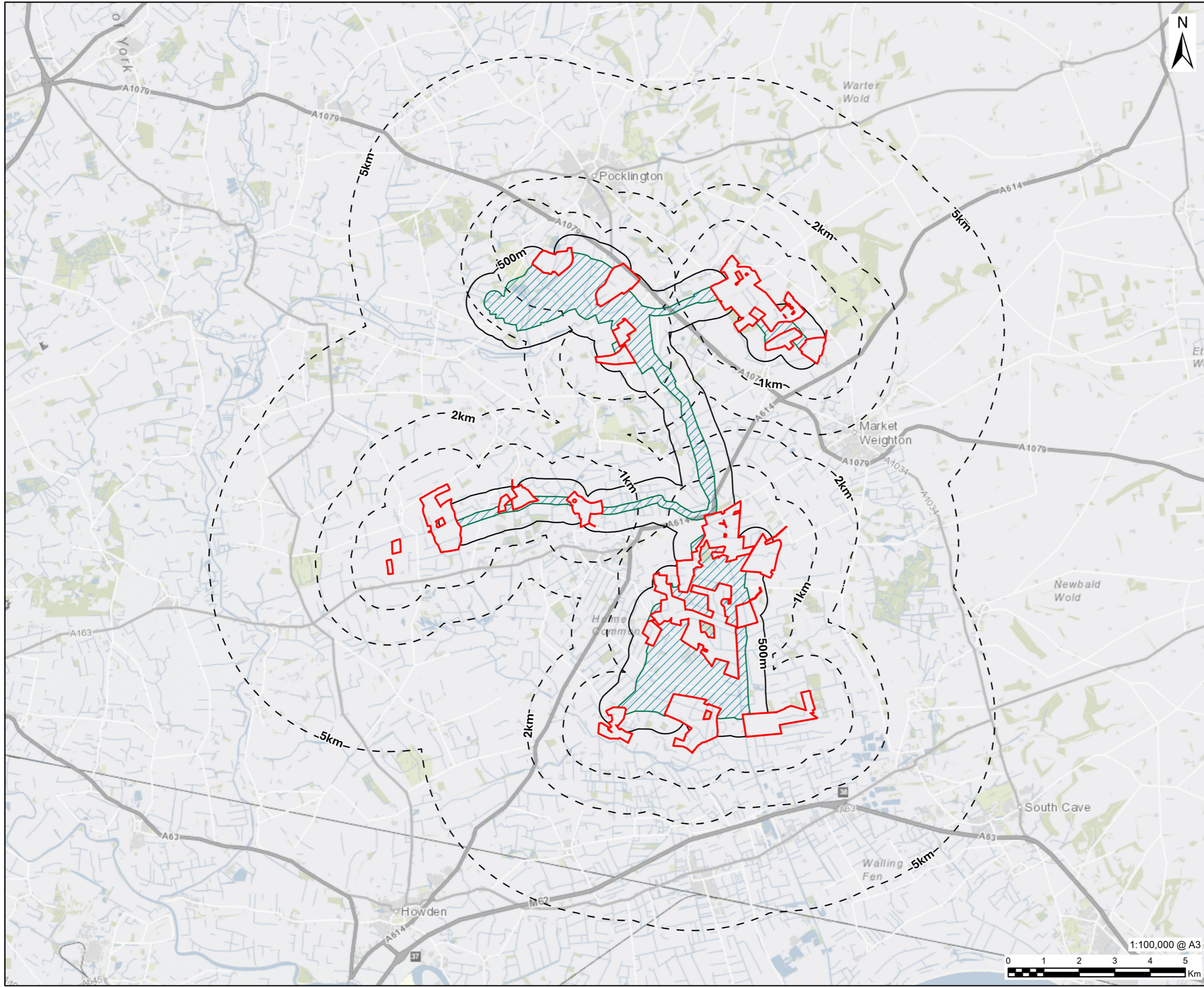
Environmental Constraints

FIGURE NUMBER

Figure 3-2

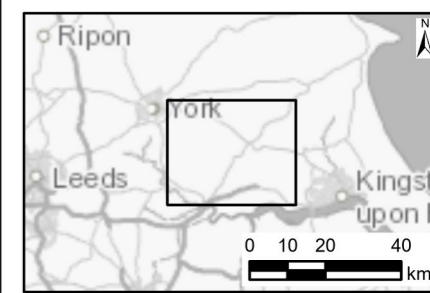


This drawing has been prepared for the use of AECOM's client. It may not be used, modified, reproduced or relied upon by third parties, except as agreed by AECOM or as required by law. AECOM accepts no responsibility, and denies any liability whatsoever, to any party that uses or relies on this drawing without AECOM's express written consent. Do not scale this document. All measurements must be obtained from the stated dimensions.



Lanpro
Stanley Harrison House
The Chocolate Works
Bishopthorpe Road
York
www.lanpro.co.uk

- Scoping Site Boundary**
- Humberhead Sites
 - Cable Route Search Corridor
 - Study Areas
 - Cable Route Corridor Study Area



NOTES

Lanpro, 2026; Contains OS data © Crown Copyright and database right 2018

ISSUE PURPOSE

Scoping Report

PROJECT NUMBER

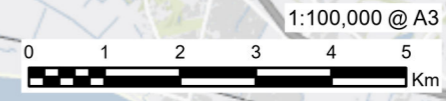
60768497

FIGURE TITLE

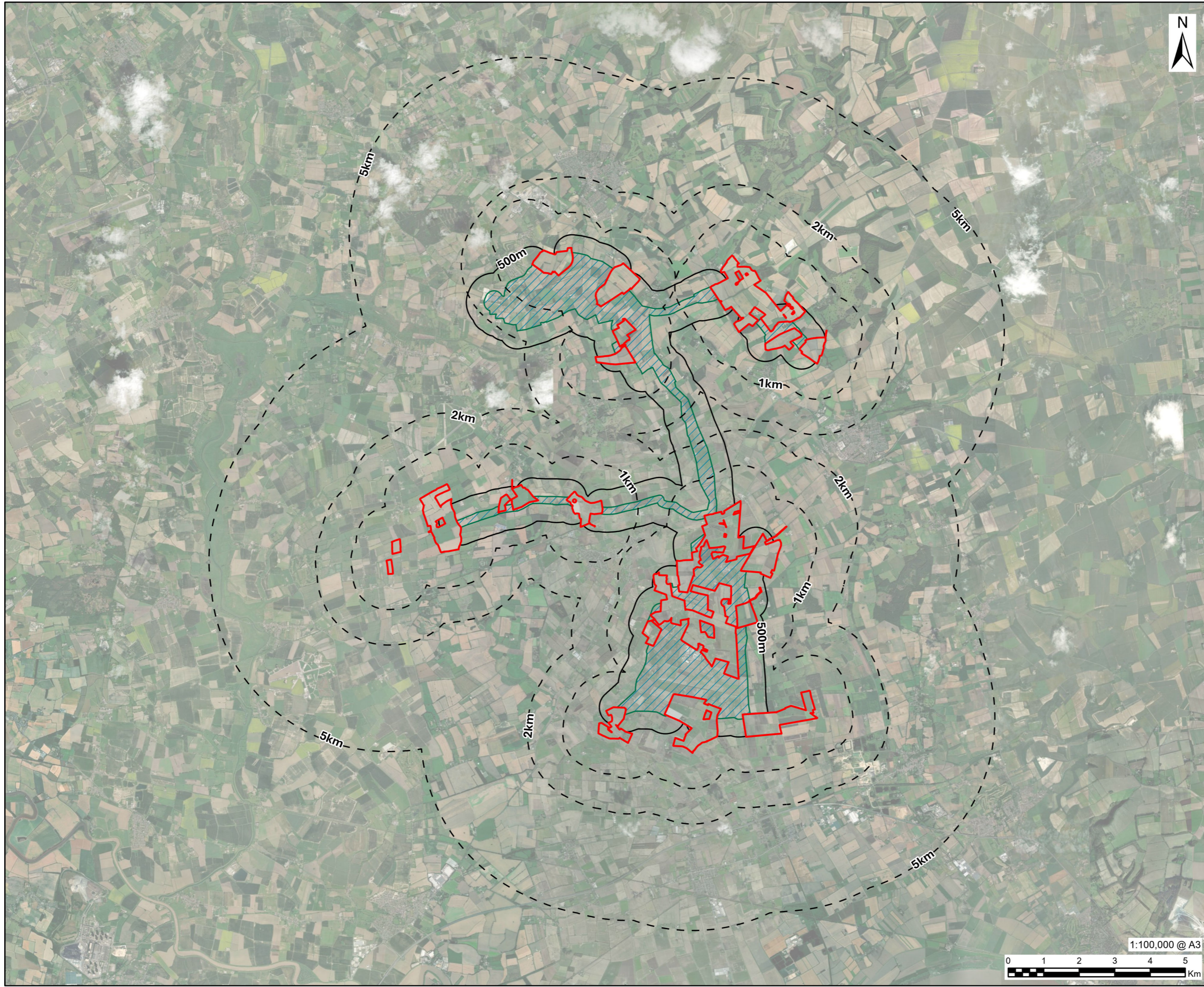
Study Area
Landscape and Visual Appraisal (LVA)

FIGURE NUMBER

Figure 7-1

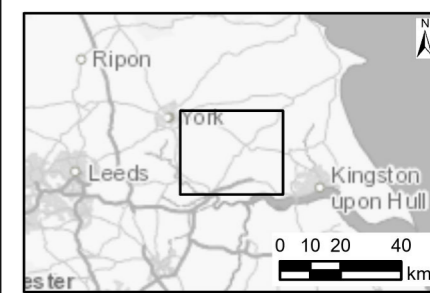


This drawing has been prepared for the use of Lanpro's client. It may not be used, modified, reproduced or relied upon by third parties, except as agreed by Lanpro or as required by law. Lanpro accepts no responsibility, and denies any liability whatsoever, to any party that uses or relies on this drawing without Lanpro's express written consent. Do not scale this document. All measurements must be obtained from the scaled dimensions.



Lanpro
Stanley Harrison House
The Chocolate Works
Bishopthorpe Road
York
www.lanpro.co.uk

- Scoping Site Boundary**
- Humberhead Sites
 - Cable Route Search Corridor
 - Study Areas
 - Cable Route Corridor Study Area



NOTES

Lanpro, 2026; Earthstar Geographics, Contains OS data © Crown Copyright and database right 2018

ISSUE PURPOSE

Scoping Report

PROJECT NUMBER

60768497

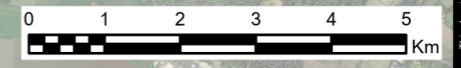
FIGURE TITLE

Aerial Photography
Landscape and Visual Appraisal (LVA)

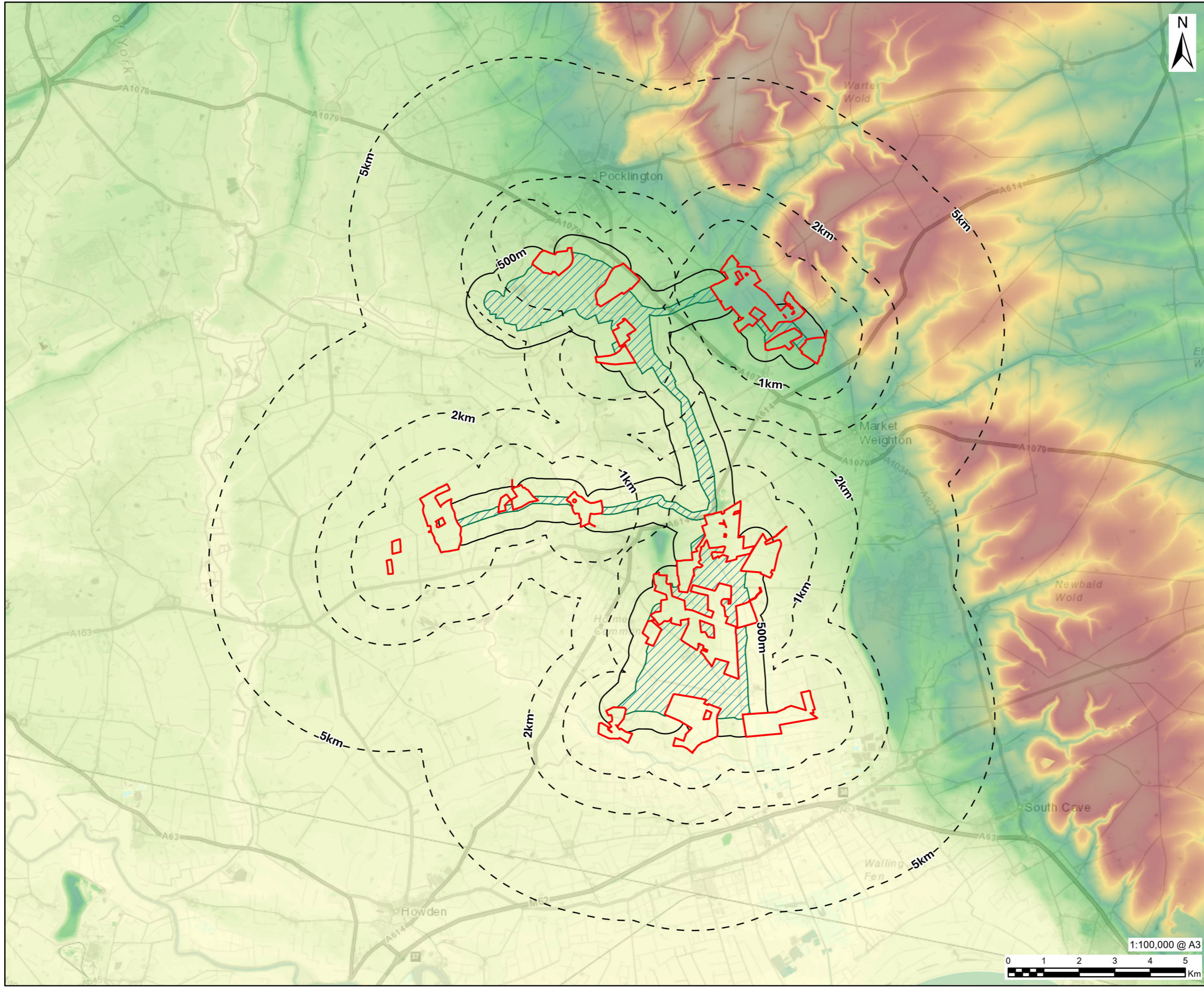
FIGURE NUMBER

Figure 7-2

1:100,000 @ A3

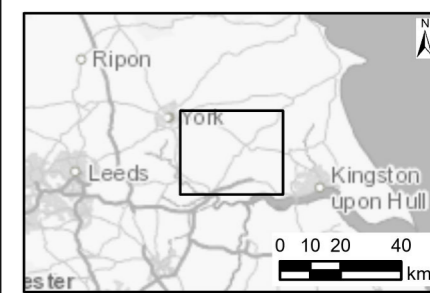


This drawing has been prepared for the use of Lanpro's client. It may not be used, modified, reproduced or relied upon by third parties, except as agreed by Lanpro or as required by law. Lanpro accepts no responsibility, and denies any liability whatsoever, to any party that uses or relies on this drawing without Lanpro's express written consent. Do not scale this document. All measurements must be obtained from the stated dimensions.



Lanpro
Stanley Harrison House
The Chocolate Works
Bishopthorpe Road
York
www.lanpro.co.uk

- Scoping Site Boundary**
- Humberhead Sites
 - Cable Route Search Corridor
- Study Areas**
- Study Areas
 - Cable Route Corridor Study Area
- Digital Terrain Model (mAO)**
- 245m
 - 5m



NOTES

Environment Agency, 2026; Lanpro, 2026; Contains OS data © Crown Copyright and database right 2018

ISSUE PURPOSE

Scoping Report

PROJECT NUMBER

60768497

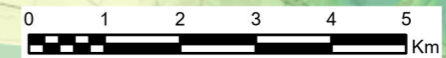
FIGURE TITLE

Landform
Landscape and Visual Appraisal (LVA)

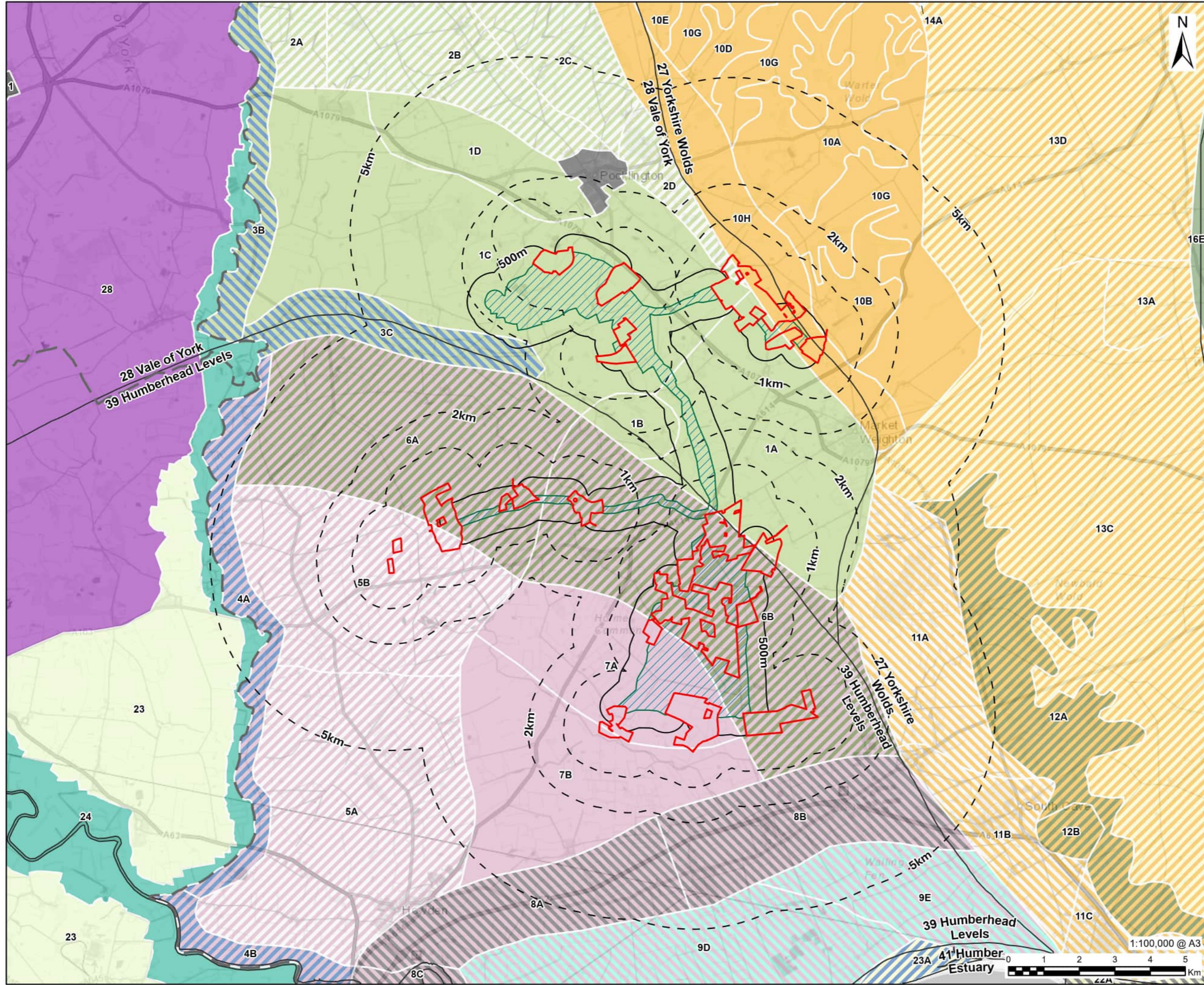
FIGURE NUMBER

Figure 7-3

1:100,000 @ A3

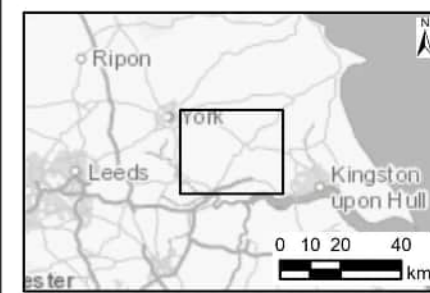


This drawing has been prepared for the use of Lanpro's client. It may not be used, modified, reproduced or relied upon by third parties, except as agreed by Lanpro or as required by law. Lanpro accepts no responsibility, and denies any liability whatsoever, to any party that uses or relies on this drawing without Lanpro's express written consent. Do not scale this document. All measurements must be obtained from the stated dimensions.



LEGEND

- Scoping Site Boundary**
- Humberhead Sites
 - Cable Route Search Corridor
- Study Areas**
- Study Area
 - District Boundary
 - National Character Area
- Landscape Character Area**
- 1 Flat Open Farmland
 - 2 Open Farmland
 - 3 River/Canal Corridors
 - 4 River Corridors
 - 5 Open Farmland
 - 6 Wooded Open Farmland
 - 7 Foulness Open Farmland
 - 8 M62 Corridor Farmland
 - 9 Drained Open Farmland
 - 10 Complex Sloping Farmland
 - 11 Jurassic Hills Farmland
 - 12 Sloping Wooded Farmland
 - 13 Open High Rolling Farmland
 - 14 Central Dissected Plateau
 - 15 Holderness
 - 16 Sloping Farmland
 - 22 Farmed Urban Fringe
 - 23 Humber Banks
 - Urban
 - North Yorkshire and York (2011)
 - 1 Urban Landscapes
 - Farmed Lowland & Valley Landscapes
 - 23 Levels Farmland
 - 24 River Floodplain
 - 28 Vale Farmland with Plantation Woodland and Heathland



NOTES

Natural England, 2026; North Yorkshire Council, 2026; East Riding of Yorkshire Council, 2026; Lanpro, 2026; Contains OS data © Crown Copyright and database right 2018

ISSUE PURPOSE
Scoping Report

PROJECT NUMBER
60768497

FIGURE TITLE
Landscape Character Areas
Landscape and Visual Appraisal (LVA)

FIGURE NUMBER
Figure 7-4

1:100,000 @ A3





HUMBERHEAD
SOLAR