



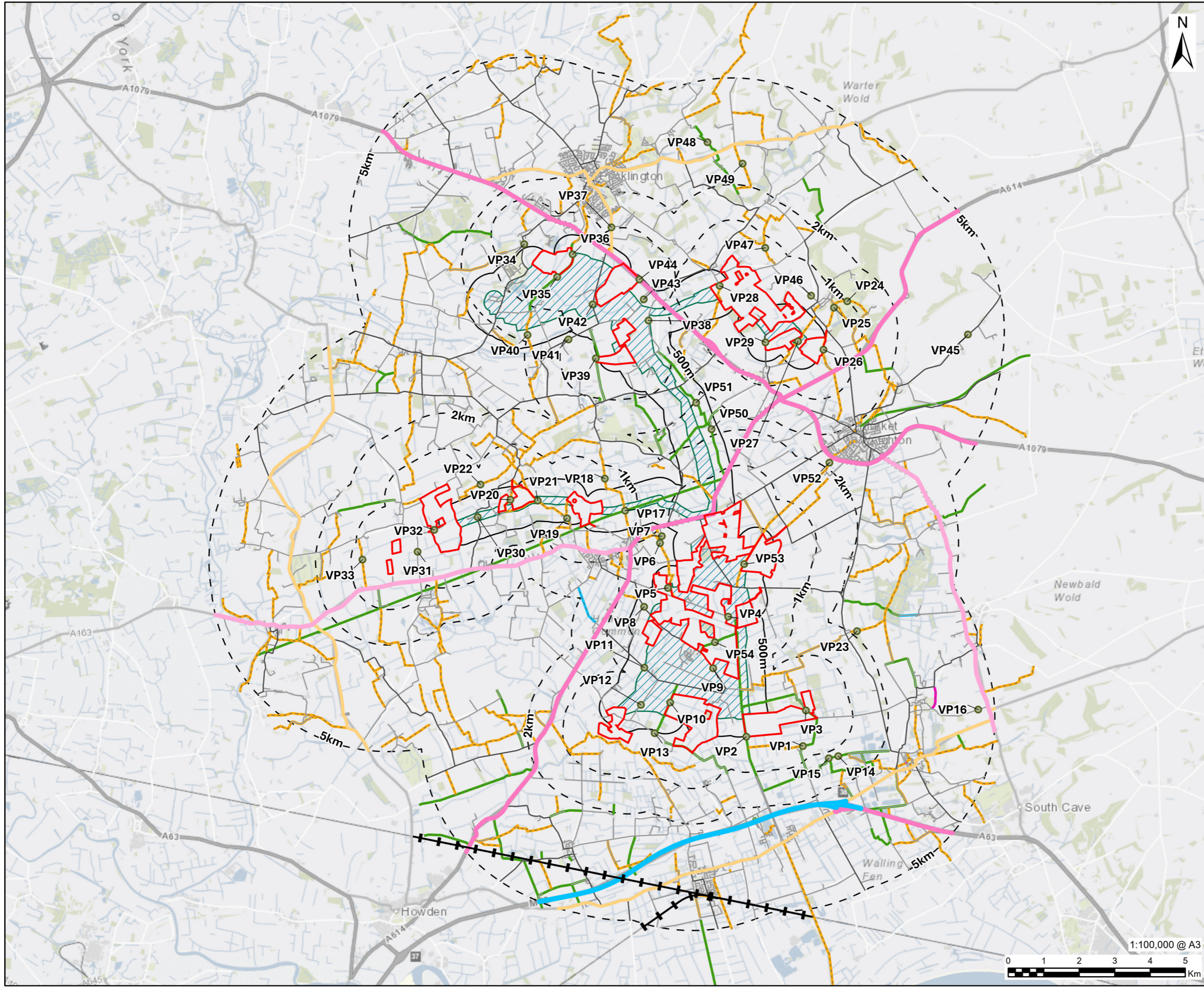
Environmental Impact Assessment Scoping Report

EN0110032

Figures Part 3: 7-14 to 9-1

Part 1	
Figure 1-1	Site Location and Scoping Site Boundary
Figure 1-2	Site Boundary and Land Use
Figure 3-1	Humberhead Sites Field Boundaries
Figure 3-2	Environmental Constraints
Figure 7-1	Study Area Landscape and Visual Appraisal (LVIA)
Figure 7-2	Aerial Photography
Figure 7-3	Landform
Figure 7-4	Landscape Character Areas
Part 2	
Figure 7-5	Landscape Receptors
Figure 7-6	Visual Receptors
Figure 7-7	Flood Risk
Figure 7-8	Agricultural Land Classification
Figure 7-9	Bare Earth Zone of Theoretical Visibility
Figure 7-10	Augmented Zone of Theoretical Visibility
Figure 7-11	Private Receptors
Figure 7-12	Public Receptors
Figure 7-13	Transport Receptors
Part 3	
Figure 7-14	Viewpoints
Figure 8-1	Internationally Statutory Designated Sites
Figure 8-2	National Statutory Designated Sites
Figure 8-3	SSSI Impact Risk Zone
Figure 8-4	Non-Statutory Designated Sites
Figure 8-5	Non-Breeding Bird survey plans for the Humberhead Sites - Overview
Figure 9-1	Surface Water Receptors and their Attributes
Part 4	
Figure 9-2	Ground Water Receptors and their Attributes
Figure 9-3	Fluvial Flood Risk
Figure 9-4	Surface Water Flood Risk (Sheets 1-2)
Part 5	
Figure 9-4	Surface Water Flood Risks (Sheets 3-6)
Figure 9-5	Catchment Plan for Surface Water Framework Directive (WFD) Waterbodies
Part 6	
Figure 10-1	Designated Heritage Assets
Figure 10-2	Non-Designated Heritage Assets
Part 7	
Figure 11-1	Transport Study Area
Figure 11-2	Public Rights of Way

Part 7	
Figure 12-1	Noise and Vibration Study Areas, Sensitive Receptors and Noise Monitoring Locations
Figure 14-1-1	Air Quality Monitoring Locations under the Responsibility of the Local Authority
Figure 14-1-2	Air Quality Study Area
Figure 14-2-1	Predictive Agriculture Land Classification
Figure 14-2-2	Soil Associations



LEGEND

Scoping Site Boundary

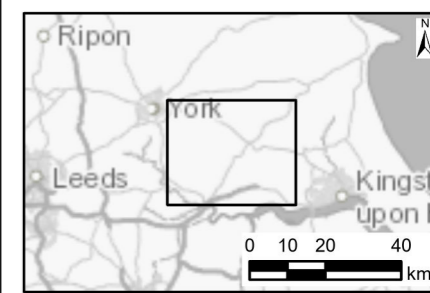
- Humberhead Sites
- Cable Route Search Corridor

Study Areas

- Study Areas
- Cable Route Corridor Study Area
- Viewpoint

Transport Receptors

- Rail
- Motorway
- Primary Road
- A Road
- B Road
- Classified Unnumbered
- Unclassified / Unknown



NOTES
Lanpro, 2026; Contains OS data © Crown Copyright and database right 2018

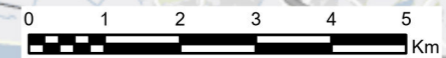
ISSUE PURPOSE
Scoping Report

PROJECT NUMBER
60768497

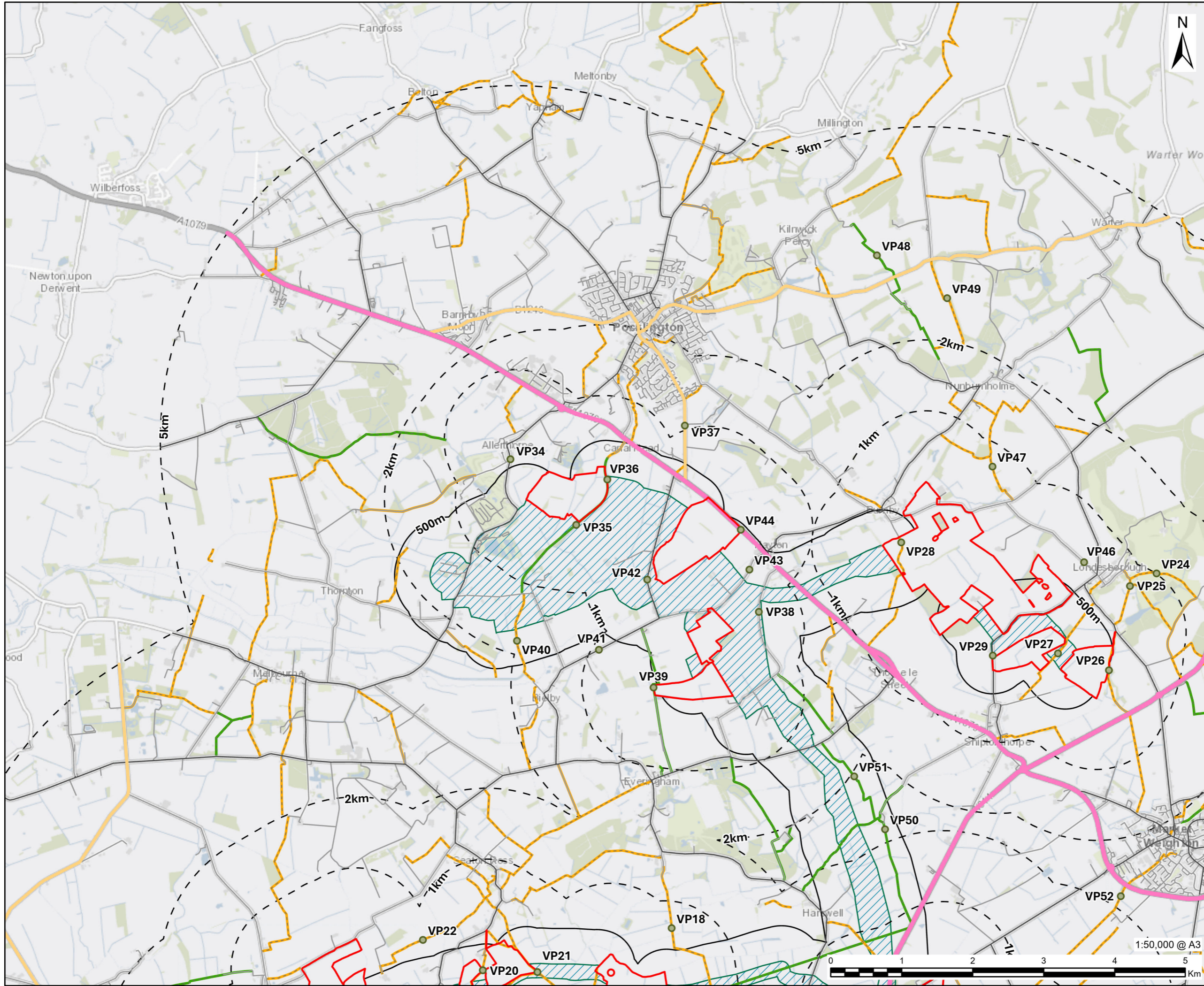
FIGURE TITLE
Viewpoints
Landscape and Visual Appraisal (LVA)

FIGURE NUMBER
Figure 7-14

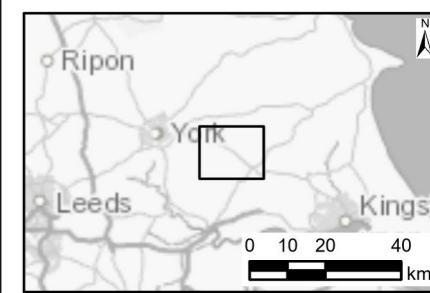
1:100,000 @ A3



This drawing has been prepared for the use of Lanpro's client. It may not be used, modified, reproduced or relied upon by third parties, except as agreed by Lanpro or as required by law. Lanpro accepts no responsibility, and denies any liability whatsoever, to any party that uses or relies on this drawing without Lanpro's express written consent. Do not scale this document. All measurements must be obtained from the stated dimensions.



- LEGEND**
- Humberhead Sites
 - Cable Route Search Corridor
 - Study Areas
 - Cable Route Corridor Study Area
 - Viewpoint
 - Transport Receptors**
 - Rail
 - Motorway
 - Primary Road
 - A Road
 - B Road
 - Classified Unnumbered
 - Unclassified / Unknown



NOTES
Lanpro, 2026; Contains OS data © Crown Copyright and database right 2018

ISSUE PURPOSE
Scoping Report

PROJECT NUMBER
60768497

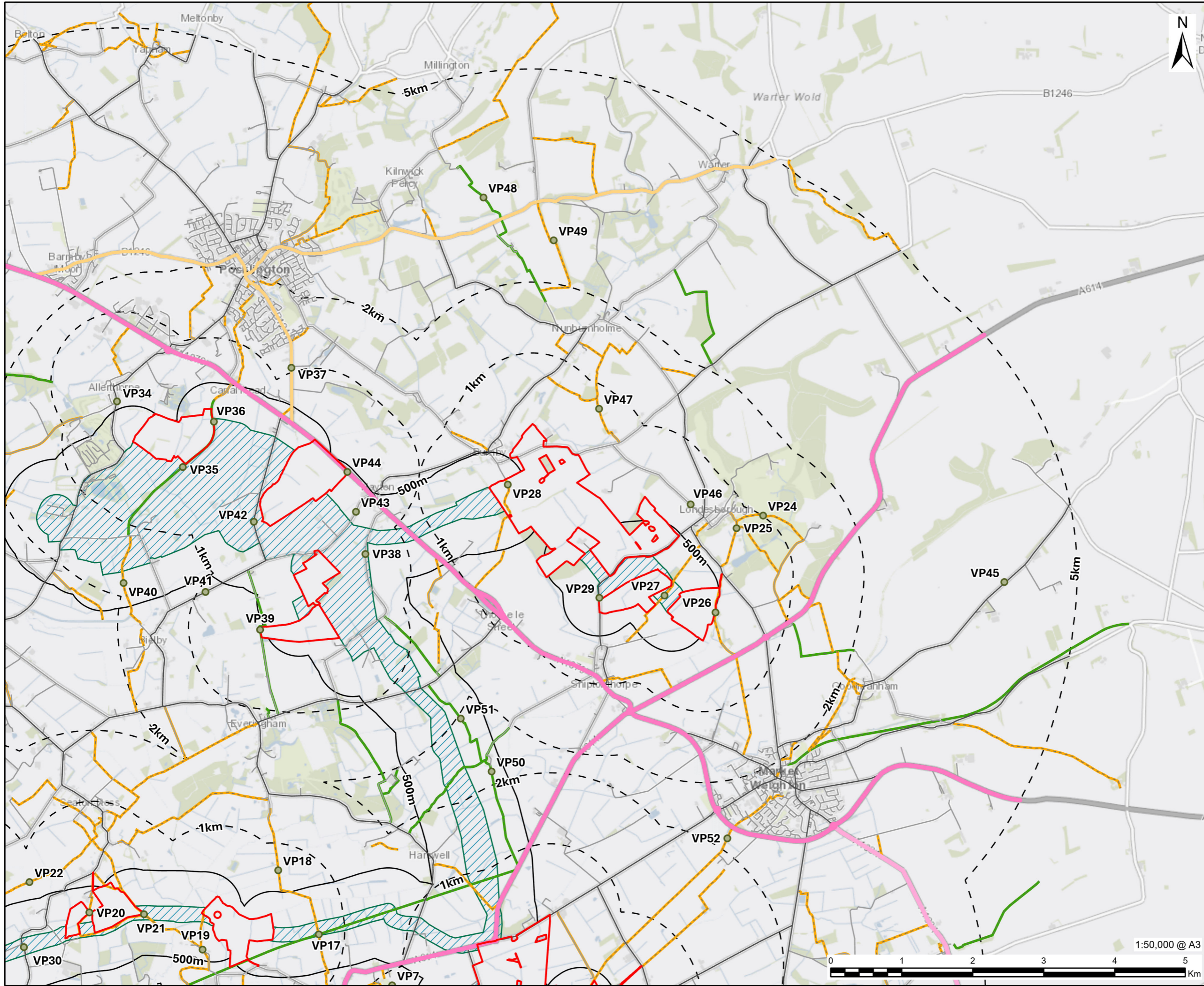
FIGURE TITLE
Viewpoints: Sheet 1 of 4
Landscape and Visual Appraisal (LVA)

FIGURE NUMBER
Figure 7-14-1

1:50,000 @ A3

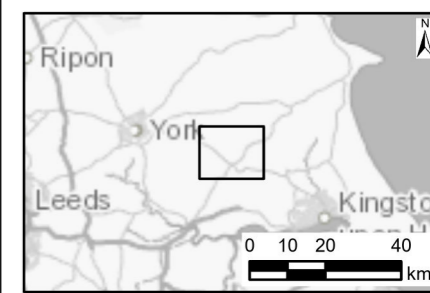


This drawing has been prepared for the use of Lanpro's client. It may not be used, modified, reproduced or relied upon by third parties, except as agreed by Lanpro or as required by law. Lanpro accepts no responsibility, and denies any liability whatsoever, to any party that uses or relies on this drawing without Lanpro's express written consent. Do not scale this document. All measurements must be obtained from the stated dimensions.



Lanpro
Stanley Harrison House
The Chocolate Works
Bishopthorpe Road
York
www.lanpro.co.uk

- Scoping Site Boundary**
- Humberhead Sites
 - Cable Route Search Corridor
- Study Areas**
- Study Areas
 - Cable Route Corridor Study Area
- Viewpoint**
- Viewpoint
- Transport Receptors**
- Rail
 - Motorway
 - Primary Road
 - A Road
 - B Road
 - Classified Unnumbered
 - Unclassified / Unknown



NOTES

Lanpro, 2026; Contains OS data © Crown Copyright and database right 2018

ISSUE PURPOSE

Scoping Report

PROJECT NUMBER

60768497

FIGURE TITLE

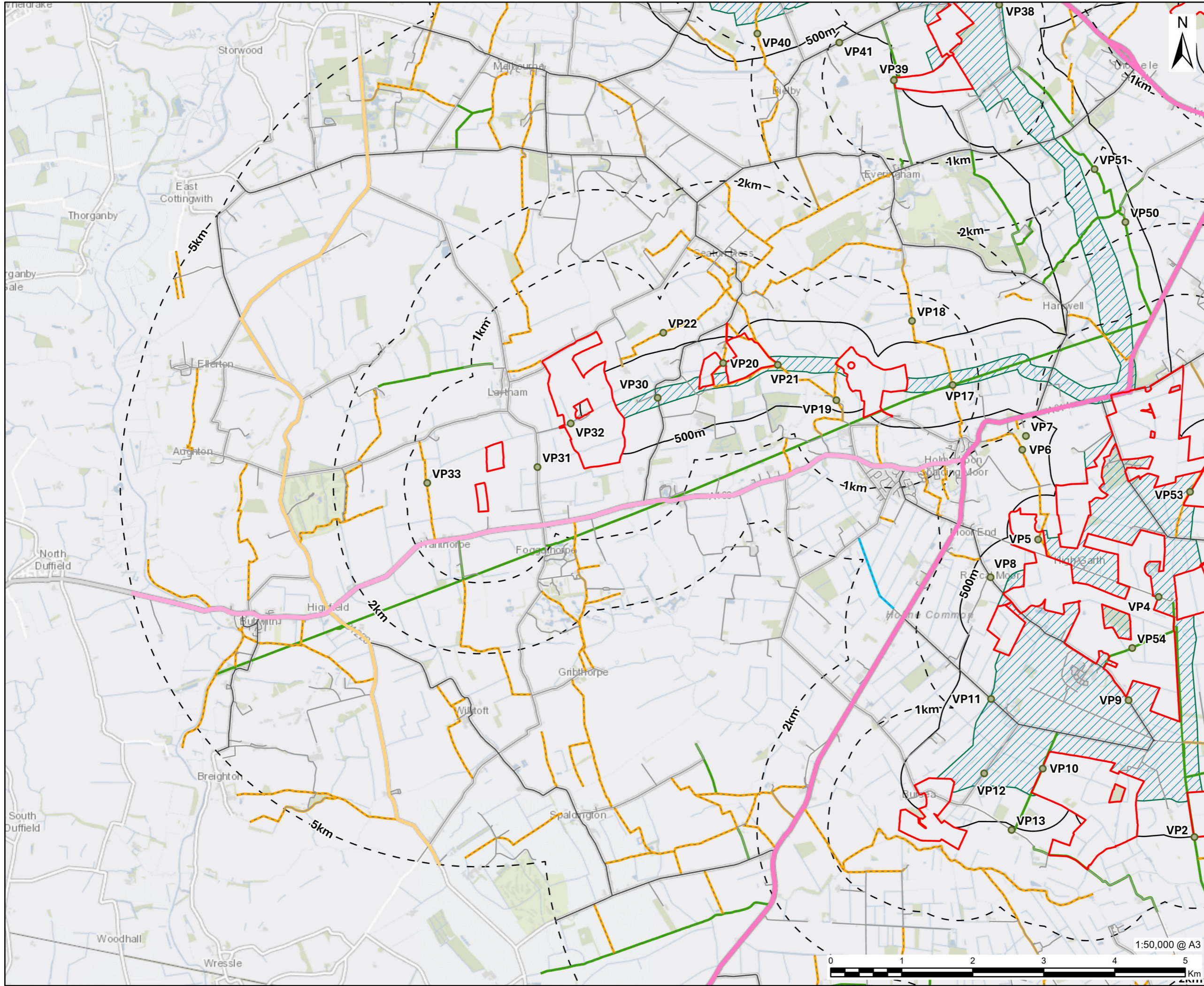
Viewpoints: Sheet 2 of 4
Landscape and Visual Appraisal (LVA)

FIGURE NUMBER

Figure 7-14-2

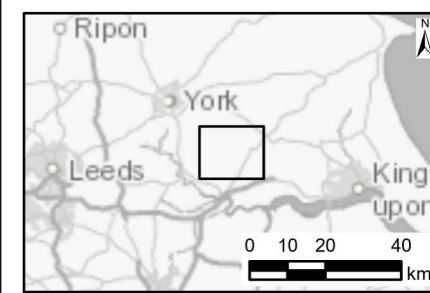
1:50,000 @ A3





Lanpro
Stanley Harrison House
The Chocolate Works
Bishopthorpe Road
York
www.lanpro.co.uk

- Scoping Site Boundary**
- Humberhead Sites
 - Cable Route Search Corridor
- Study Areas**
- Study Areas
 - Cable Route Corridor Study Area
- Viewpoint**
- Viewpoint
- Transport Receptors**
- Rail
 - Motorway
 - Primary Road
 - A Road
 - B Road
 - Classified Unnumbered
 - Unclassified / Unknown



NOTES

Lanpro, 2026; Contains OS data © Crown Copyright and database right 2018

ISSUE PURPOSE

Scoping Report

PROJECT NUMBER

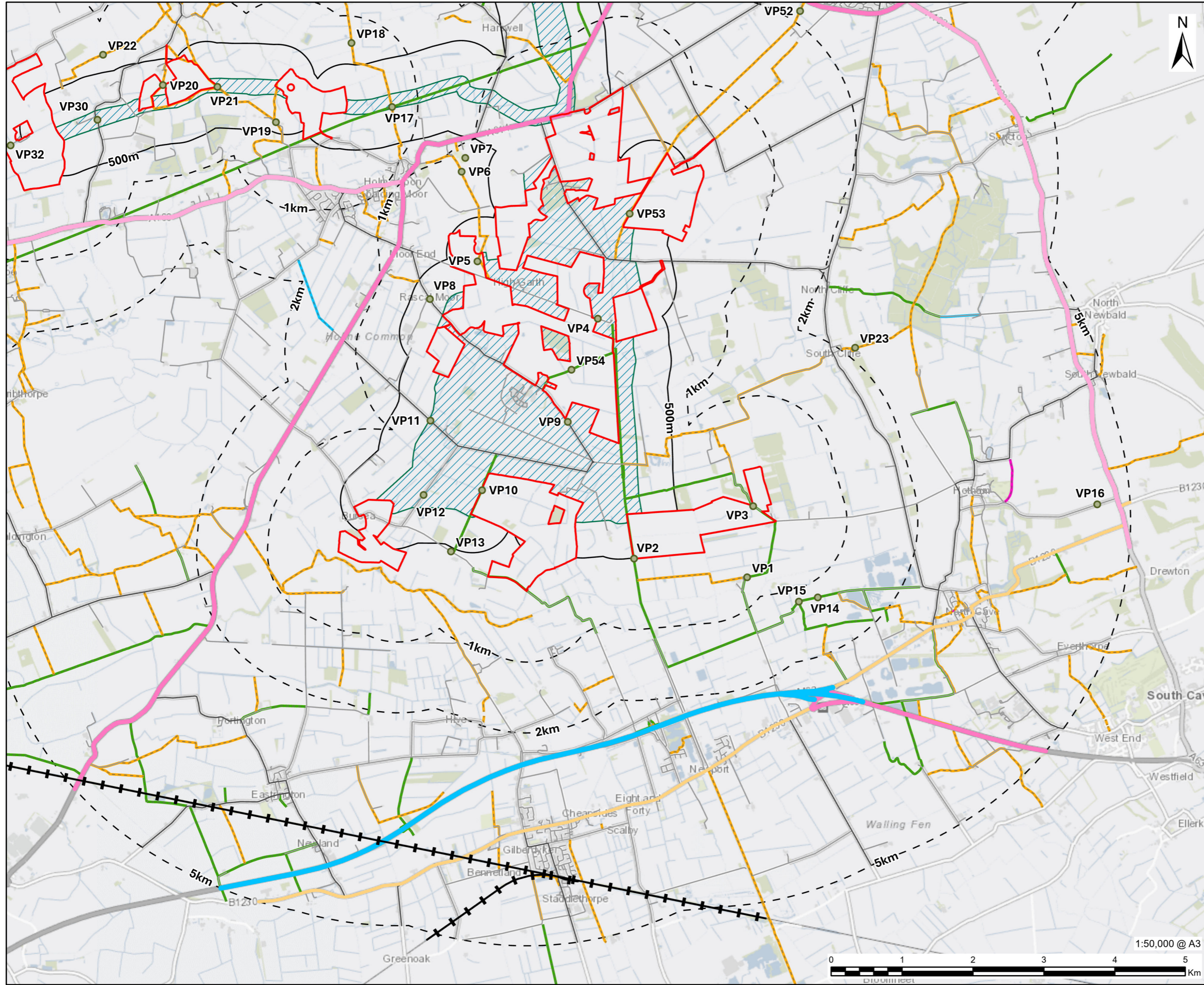
60768497

FIGURE TITLE

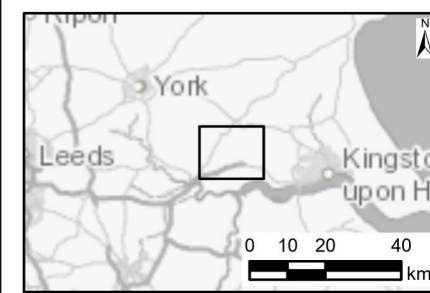
Viewpoints: Sheet 3 of 4
Landscape and Visual Appraisal (LVA)

FIGURE NUMBER

Figure 7-14-3



- Scoping Site Boundary**
- Humberhead Sites
 - Cable Route Search Corridor
- Study Areas**
- Study Areas
 - Cable Route Corridor Study Area
- Viewpoint**
- Viewpoint
- Transport Receptors**
- Rail
 - Motorway
 - Primary Road
 - A Road
 - B Road
 - Classified Unnumbered
 - Unclassified / Unknown



NOTES
Lanpro, 2026; Contains OS data © Crown Copyright and database right 2018

ISSUE PURPOSE

Scoping Report

PROJECT NUMBER

60768497

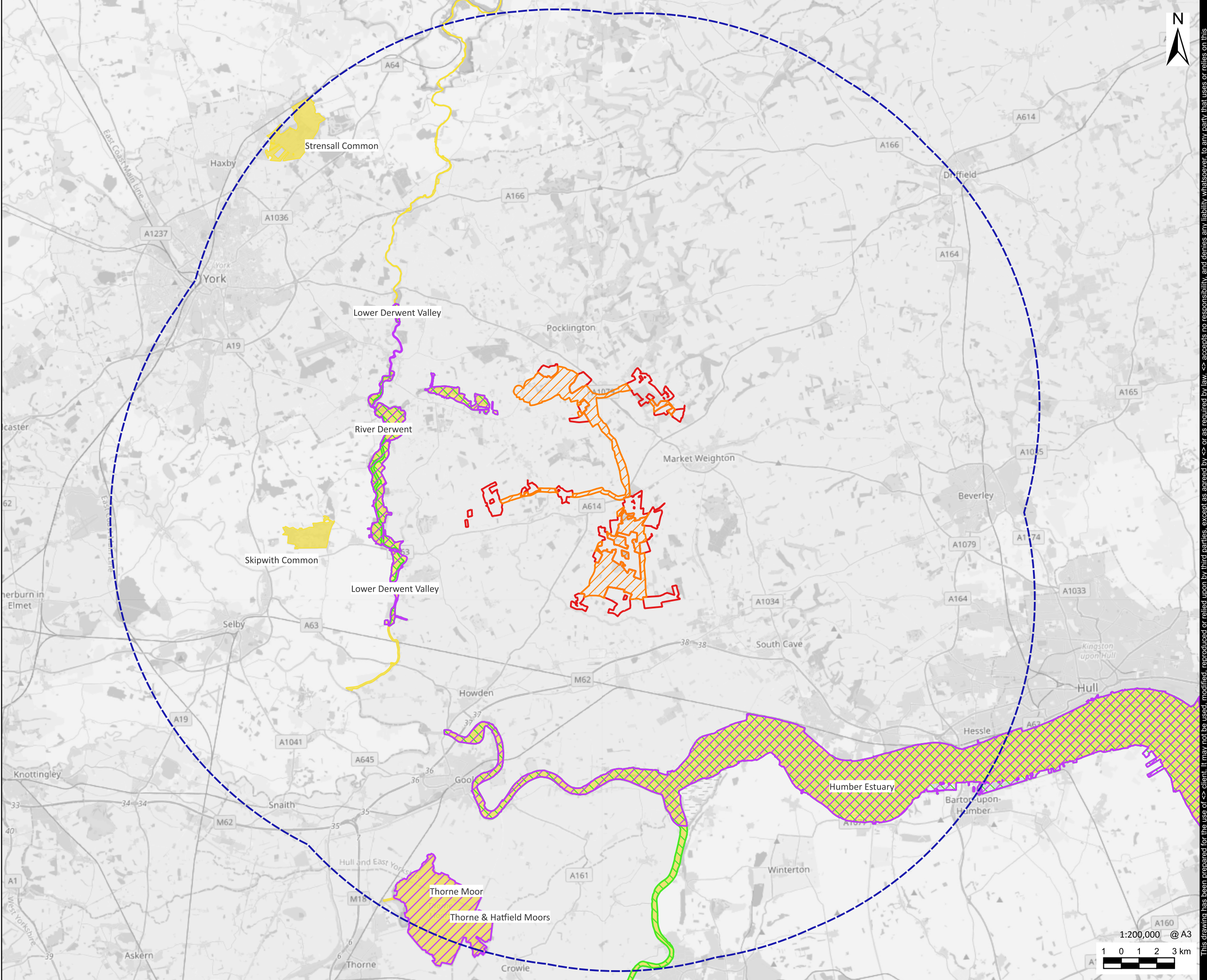
FIGURE TITLE

Viewpoints: Sheet 4 of 4
Landscape and Visual Appraisal (LVA)

FIGURE NUMBER

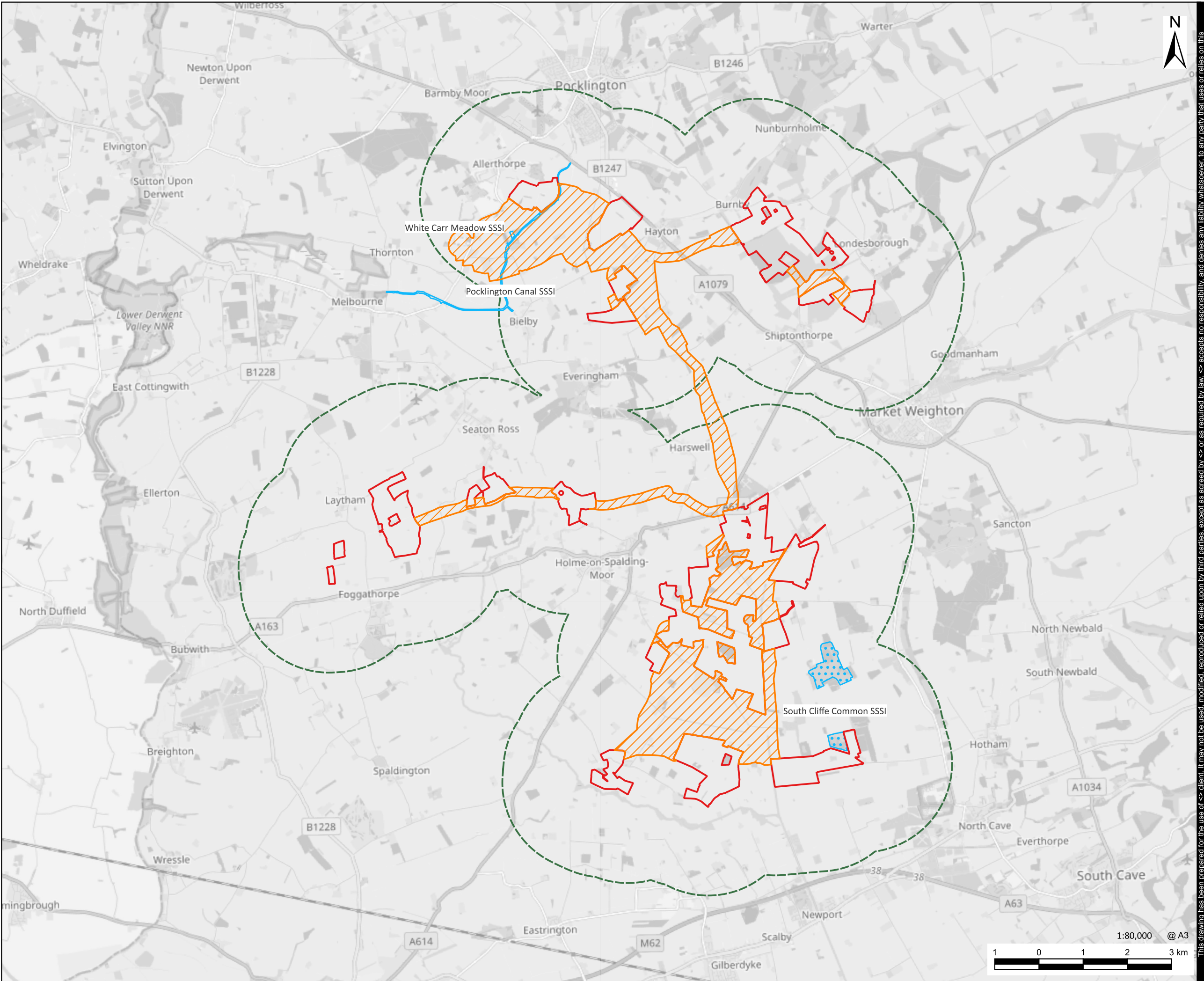
Figure 7-14-4

This drawing has been prepared for the use of Lanpro's client. It may not be used, modified, reproduced or relied upon by third parties, except as agreed by Lanpro or as required by law. Lanpro accepts no responsibility, and denies any liability whatsoever, to any party that uses or relies on this drawing without Lanpro's express written consent. Do not scale this document. All measurements must be obtained from the stated dimensions.



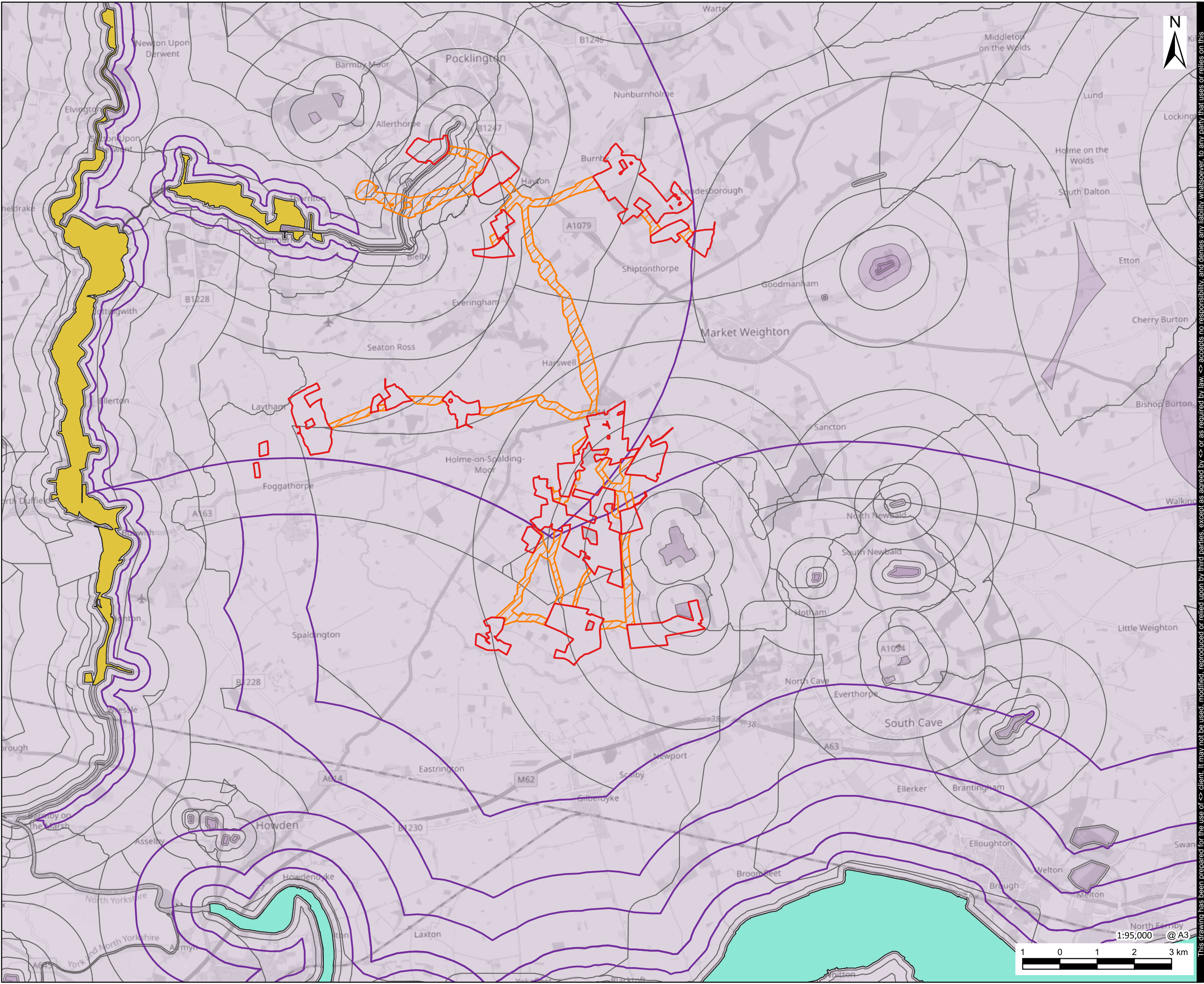
- Scoping Site Boundary**
- Cable Route Search Corridor
 - Humberhead Sites
 - 20km Site Buffer
- Statutory Designated Sites**
- Special Protection Area (SPA)
 - Ramsar
 - Special Area of Conservation (SAC)

This drawing has been prepared for the use of <-> client. It may not be used, modified, reproduced or relied upon by third parties, except as agreed by <-> or as required by law. <-> accepts no responsibility, and denies any liability whatsoever, to any party that uses or relies on this



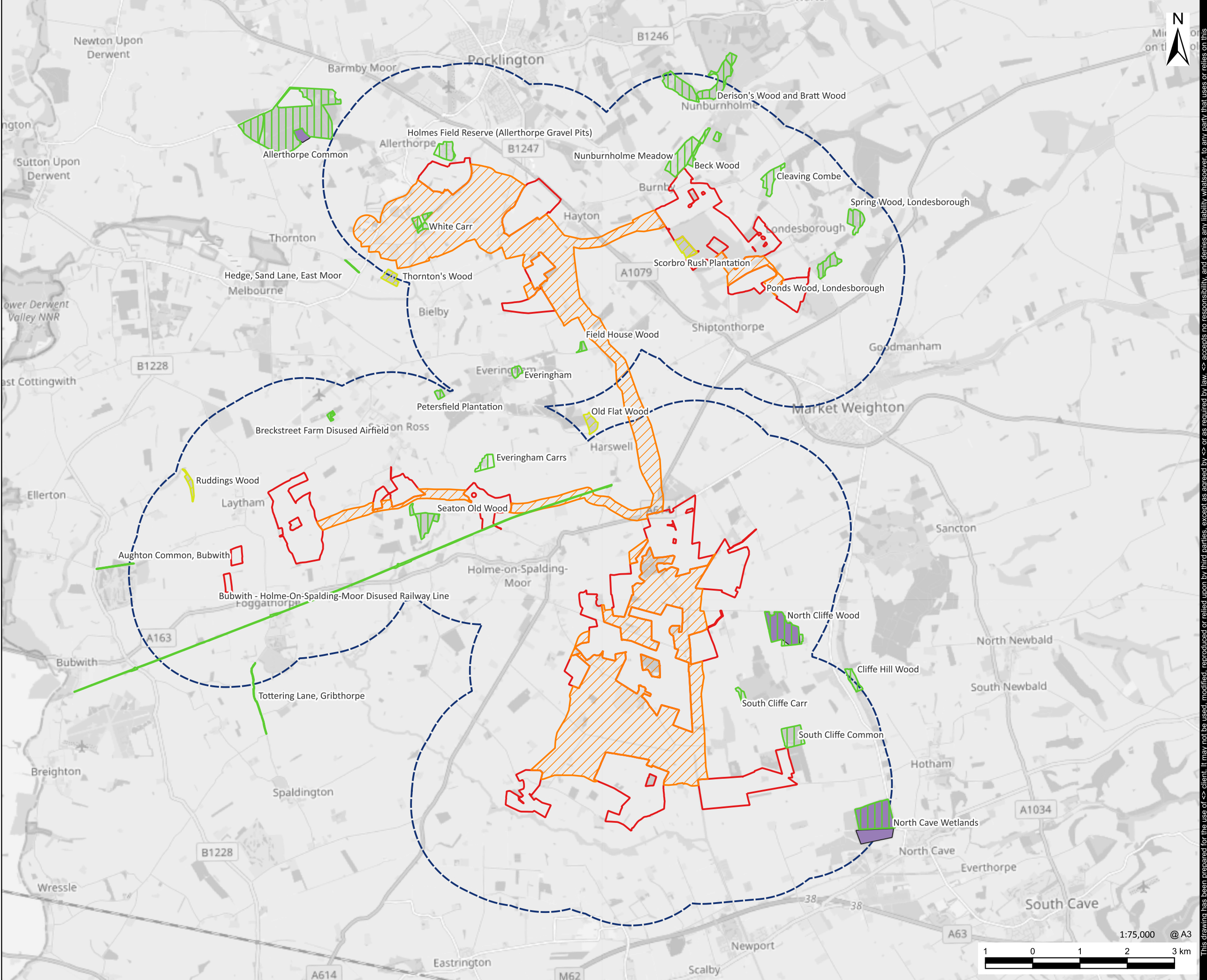
- Scoping Site Boundary
- Cable Route Search Corridor
 - Humberhead Sites
 - 2km Site Buffer
- Statutory Designated Sites
- Site of Special Scientific Interest (SSSI)

This drawing has been prepared for the use of <-> client. It may not be used, modified, reproduced or relied upon by third parties, except as agreed by <-> or as required by law. <-> accepts no responsibility, and denies any liability whatsoever, to any party that uses or relies on this



- Scoping Site Boundary
 - Humberhead Sites
 - Cable Route Search Corridor
- SSSI Risk Zones
 - Humber Estuary
 - Lower Derwent Valley
 - SSSI Impact Risk Zones - Key Contours
 - All SSSI Impact Risk Zones

This drawing has been prepared for the use of <-> client. It may not be used, modified, reproduced or relied upon by third parties, except as agreed by <-> or as required by law. <-> accepts no responsibility, and denies any liability whatsoever, to any party that uses or relies on this



- Scoping Site Boundary
- Humberhead Sites
 - Cable Route Search Corridor
 - 2km Site Buffer
- Non-Statutory Designated Sites
- Designated and Candidate Local Wildlife Site
 - Historic Local Wildlife Sites
 - Yorkshire Wildlife Trust Reserves

NOTES

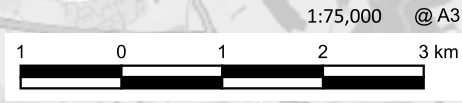
FIGURE TITLE

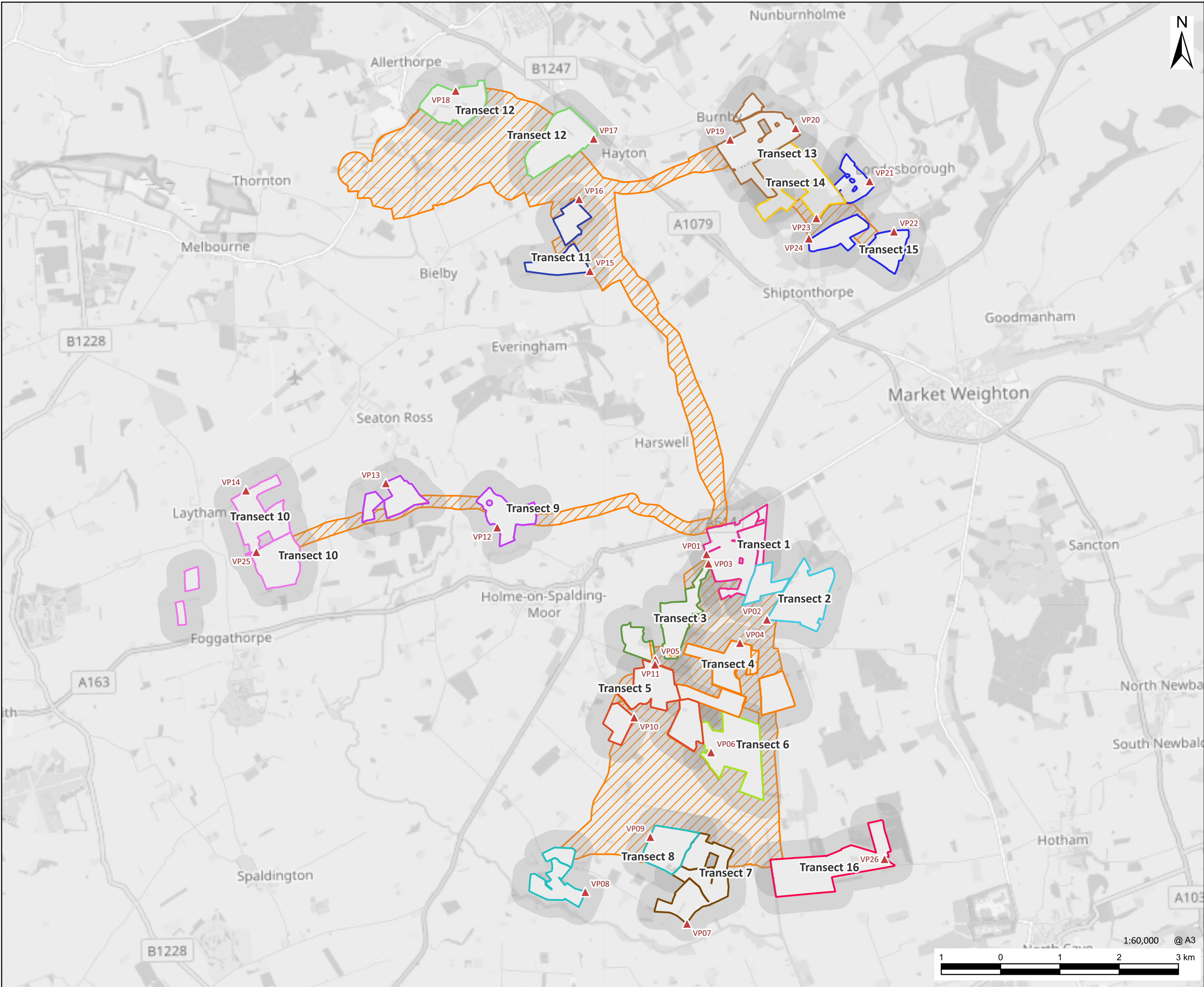
Non-Statutory Designated Sites

FIGURE NUMBER

Figure 8-4

This drawing has been prepared for the use of <-> client. It may not be used, modified, reproduced or relied upon by third parties, except as agreed by <-> or as required by law. <-> accepts no responsibility, and denies any liability whatsoever, to any party that uses or relies on this





Avian Ecology
 Techspace Two, Sci-Tech Daresbury,
 Keswick Lane, Daresbury, WA4 4FS
 www.avian-ecology.co.uk

- Scoping Site Boundary**
- Humberhead Sites**
- Transect 1
 - Transect 2
 - Transect 3
 - Transect 4
 - Transect 5
 - Transect 6
 - Transect 7
 - Transect 8
 - Transect 9
 - Transect 10
 - Transect 11
 - Transect 12
 - Transect 13
 - Transect 14
 - Transect 15
 - Transect 16
 - Cable Route Search Corridor
 - 300m Survey Buffer
 - ▲ Vantage Point (VP)

NOTES

Note that transects are not defined here and locations are only given

This map contains data from the following sources:

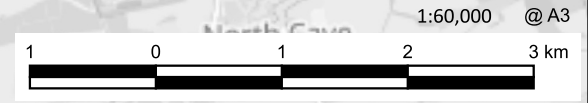
Ordnance Survey (2026)
 © Crown copyright. All rights reserved. 2026
 Licence number 010031673

FIGURE TITLE

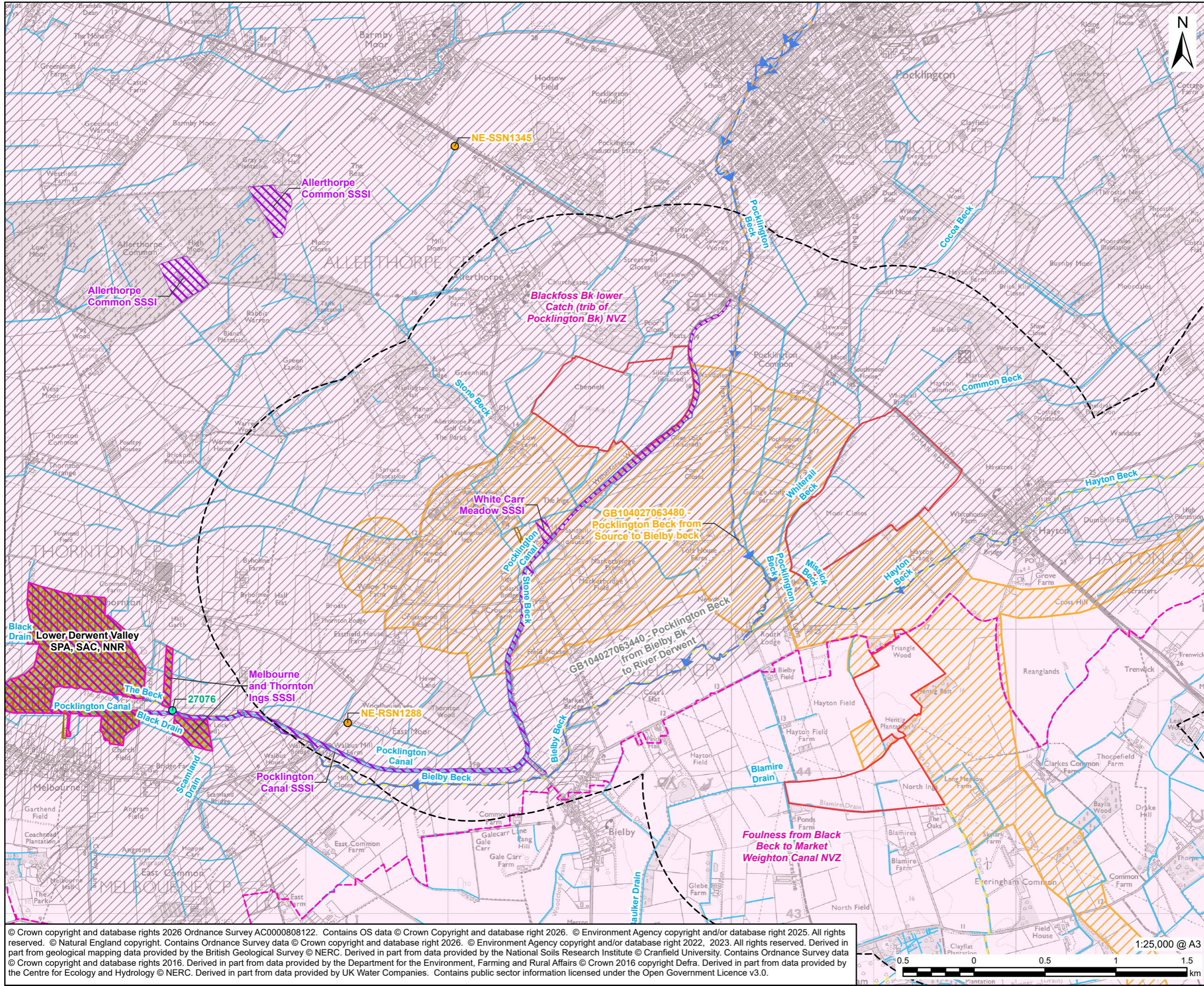
Non-breeding bird survey plans for the Humberhead Sites - overview

FIGURE NUMBER

Figure 8-5



This drawing has been prepared for the use of <-> client. It may not be used, modified, reproduced or relied upon by third parties, except as agreed by <-> or as required by law. <-> accepts no responsibility, and denies any liability whatsoever, to any party that uses or relies on this



AECOM

HUMBERHEAD SOLAR

CLIENT

Island GREEN POWER

CONSULTANT

AECOM Limited
3 Rivergate
Bristol, BS1 6EW
www.aecom.com

LEGEND

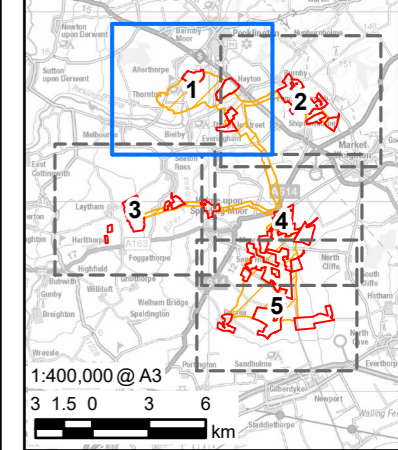
Scoping Site Boundary

- Humberhead Sites
- Cable Route Search Corridor
- Study Area (1km Buffer of the Scoping Site Boundary)
- National River Flows Archive Gauging Station
- Environment Agency Water Quality Monitoring Location
- Main River
- Surface Watercourse
- Nitrate Vulnerable Zone (NVZ)
- Drinking Water Safeguard Zone
- Ramsar
- Site of Special Scientific Interest (SSSI)
- Special Area of Conservation (SAC)
- Special Protection Areas (SPA)
- National Nature Reserve (NNR)

Water Framework Directive (WFD) Watercourse - Overall Status

- Moderate
- Poor
- Heavily Modified / Artificial

Other features within the map frame are shown in the legend - no other surface water receptors or classes of receptor are present.



© Crown copyright and database rights 2026 Ordnance Survey AC0000808122. Contains OS data © Crown Copyright and database right 2026. © Environment Agency copyright and/or database right 2025. All rights reserved. © Natural England copyright. Contains Ordnance Survey data © Crown copyright and database right 2026. © Environment Agency copyright and/or database right 2022, 2023. All rights reserved. Derived in part from geological mapping data provided by the British Geological Survey © NERC. Derived in part from data provided by the National Soils Research Institute © Cranfield University. Contains Ordnance Survey data © Crown copyright and database rights 2016. Derived in part from data provided by the Department for the Environment, Farming and Rural Affairs © Crown 2016 copyright Defra. Derived in part from data provided by the Centre for Ecology and Hydrology © NERC. Derived in part from data provided by UK Water Companies. Contains public sector information licensed under the Open Government Licence v3.0.

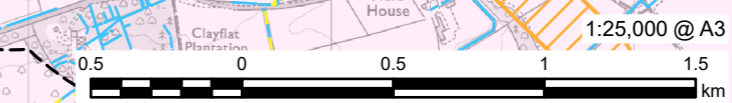
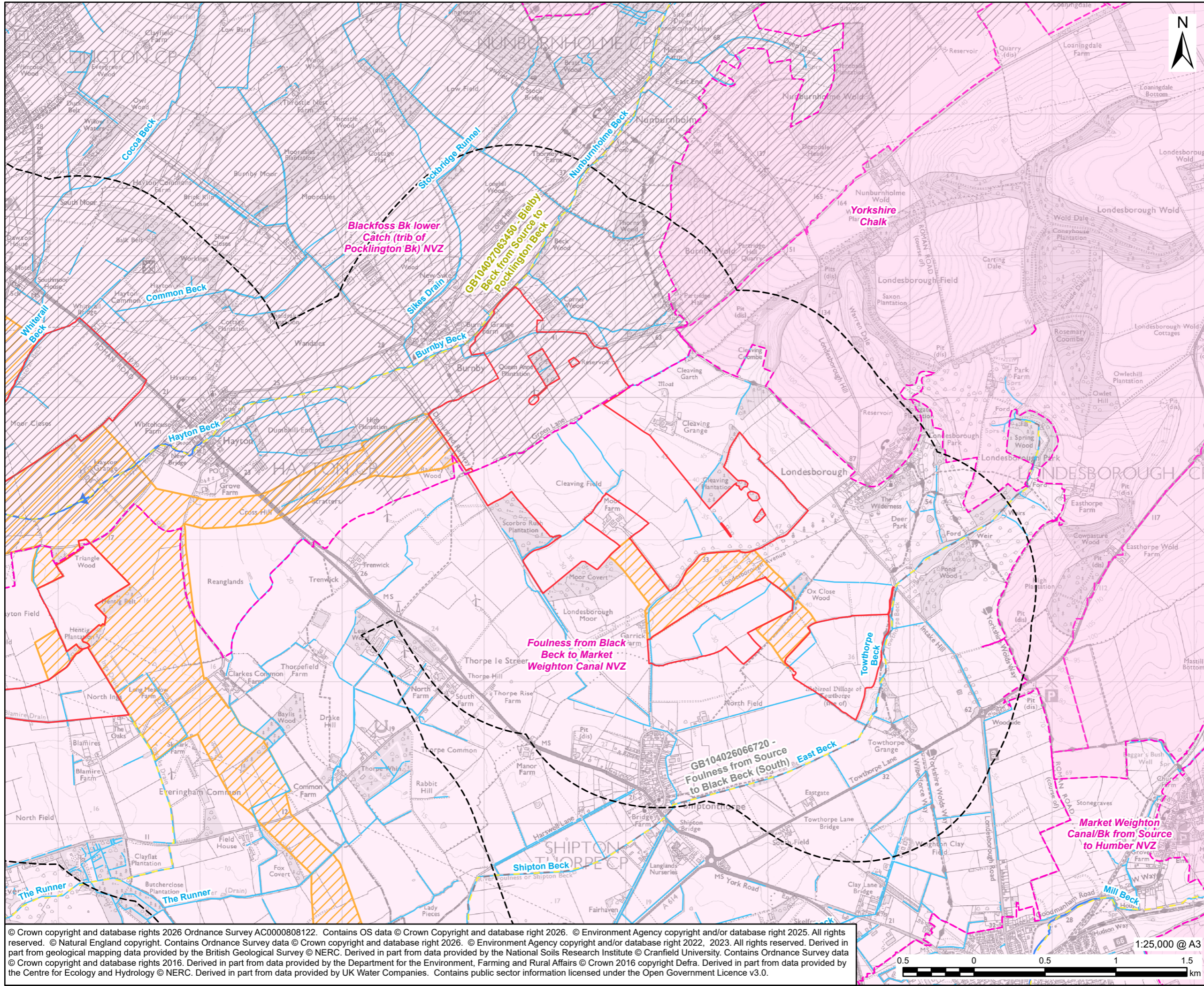


FIGURE TITLE
Surface Water Receptors and their Attributes
Sheet 1 of 5

FIGURE NUMBER
Figure 9-1



AECOM
 PROJECT
HUMBERHEAD SOLAR
 CLIENT
 Island GREEN POWER
 CONSULTANT
 AECOM Limited
 3 Rivergate
 Bristol, BS1 6EW
 www.aecom.com

LEGEND

Scoping Site Boundary

- Humberhead Sites
- Cable Route Search Corridor
- Study Area (1km Buffer of the Scoping Site Boundary)
- Main River
- Surface Watercourse
- Nitrate Vulnerable Zone (NVZ)
- Drinking Water Safeguard Zone

Water Framework Directive (WFD) Watercourse - Overall Status

- Moderate
- Heavily Modified / Artificial

Only features within the map frame are shown in the legend - no other surface water receptors or classes of receptor are present.

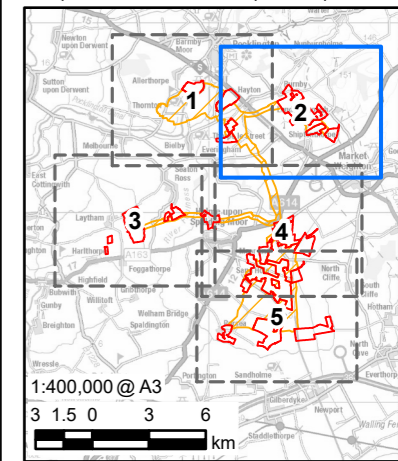
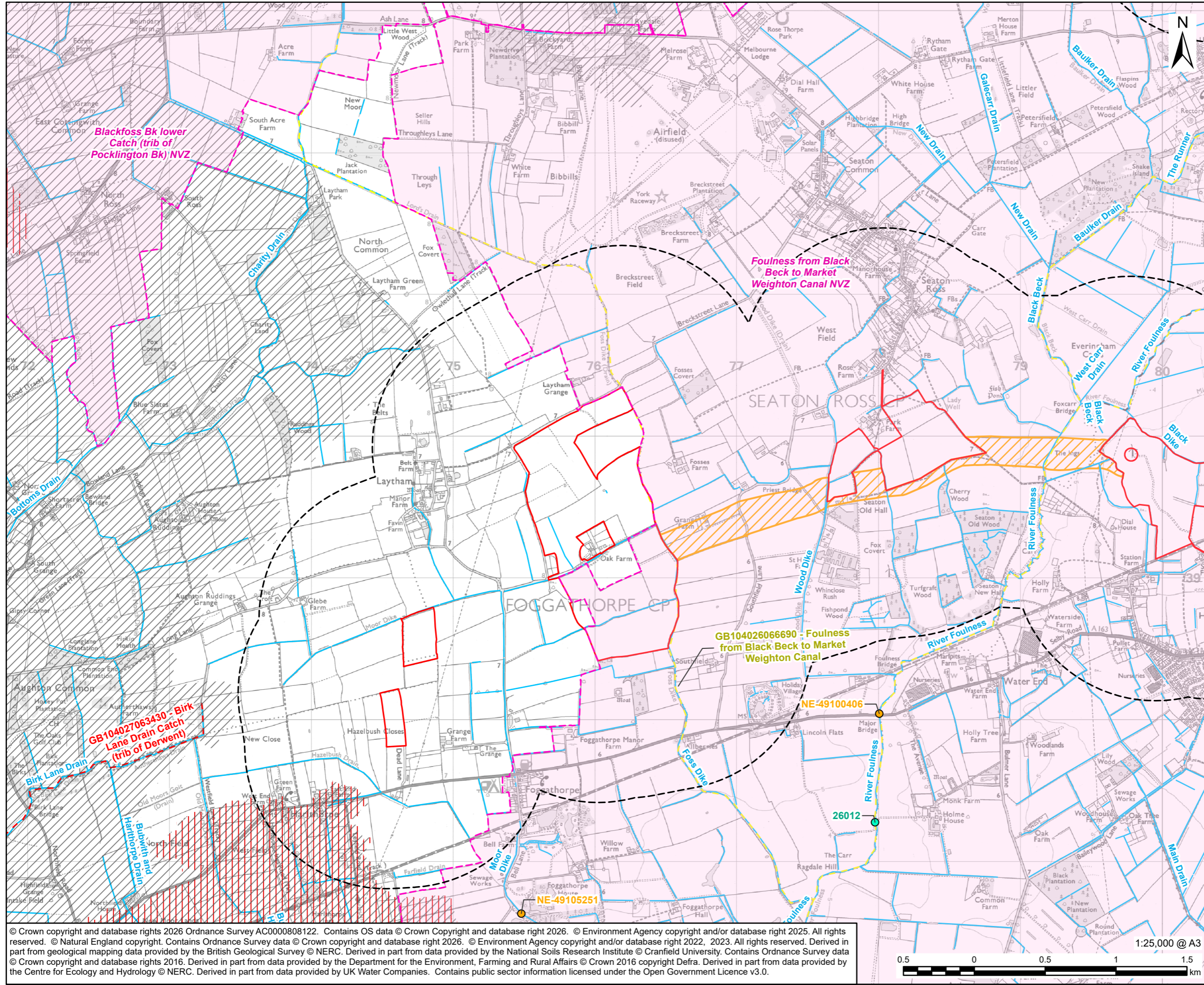


FIGURE TITLE
 Surface Water Receptors and their Attributes
 Sheet 2 of 5
FIGURE NUMBER
 Figure 9-1

© Crown copyright and database rights 2026 Ordnance Survey AC0000808122. Contains OS data © Crown Copyright and database right 2026. © Environment Agency copyright and/or database right 2025. All rights reserved. © Natural England copyright. Contains Ordnance Survey data © Crown copyright and database right 2026. © Environment Agency copyright and/or database right 2022, 2023. All rights reserved. Derived in part from geological mapping data provided by the British Geological Survey © NERC. Derived in part from data provided by the National Soils Research Institute © Cranfield University. Contains Ordnance Survey data © Crown copyright and database rights 2016. Derived in part from data provided by the Department for the Environment, Farming and Rural Affairs © Crown 2016 copyright Defra. Derived in part from data provided by the Centre for Ecology and Hydrology © NERC. Derived in part from data provided by UK Water Companies. Contains public sector information licensed under the Open Government Licence v3.0.

This drawing has been prepared for the use of AECOM's client. It may not be used, modified, reproduced or relied upon by third parties, except as agreed by AECOM or as required by law. AECOM accepts no responsibility, and denies any liability whatsoever, to any party that uses or relies on this drawing without AECOM's express written consent. Do not scale this document. All measurements must be obtained from the stated dimensions.



LEGEND

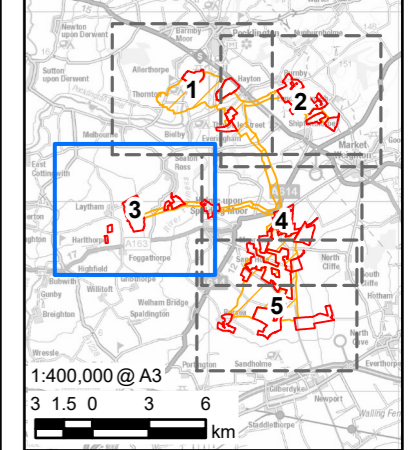
Scoping Site Boundary

- Humberhead Sites
- Cable Route Search Corridor
- Study Area (1km Buffer of the Scoping Site Boundary)
- National River Flows Archive Gauging Station
- Environment Agency Water Quality Monitoring Location
- Surface Watercourse
- Nitrate Vulnerable Zone (NVZ)
- Drinking Water Protected Area
- Drinking Water Safeguard Zone

Water Framework Directive (WFD) Watercourse - Overall Status

- Moderate
- Bad
- Heavily Modified / Artificial

Only features within the map frame are shown in the legend - no other surface water receptors or classes of receptor are present.



© Crown copyright and database rights 2026 Ordnance Survey AC0000808122. Contains OS data © Crown Copyright and database right 2026. © Environment Agency copyright and/or database right 2025. All rights reserved. © Natural England copyright. Contains Ordnance Survey data © Crown copyright and database right 2026. © Environment Agency copyright and/or database right 2022, 2023. All rights reserved. Derived in part from geological mapping data provided by the British Geological Survey © NERC. Derived in part from data provided by the National Soils Research Institute © Cranfield University. Contains Ordnance Survey data © Crown copyright and database rights 2016. Derived in part from data provided by the Department for the Environment, Farming and Rural Affairs © Crown 2016 copyright Defra. Derived in part from data provided by the Centre for Ecology and Hydrology © NERC. Derived in part from data provided by UK Water Companies. Contains public sector information licensed under the Open Government Licence v3.0.

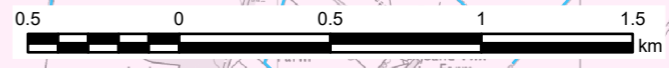
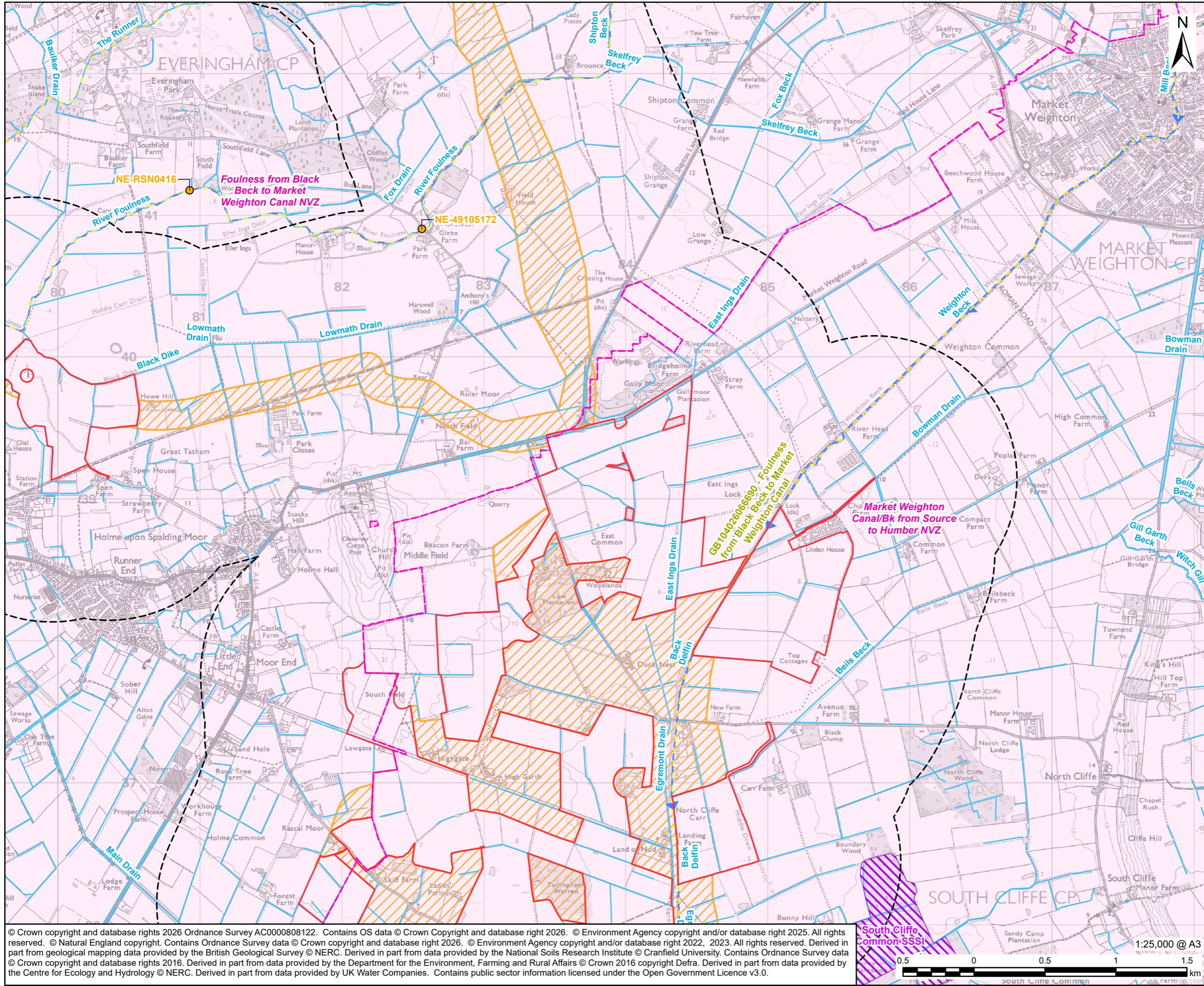


FIGURE TITLE
Surface Water Receptors and their Attributes
Sheet 3 of 5

FIGURE NUMBER
Figure 9-1



AECOM
 PROJECT
HUMBERHEAD SOLAR
 CLIENT
 Island GREEN POWER
 CONSULTANT
 AECOM Limited
 3 Rivergate
 Bristol, BS1 6EW
 www.aecom.com

LEGEND

Scoping Site Boundary

- Humberhead Sites
- Cable Route Search Corridor
- Study Area (1km Buffer of the Scoping Site Boundary)
- Environment Agency Water Quality Monitoring Location
- Main River
- Surface Watercourse
- Nitrate Vulnerable Zone (NVZ)
- Site of Special Scientific Interest (SSSI)

Water Framework Directive (WFD) Watercourse - Overall Status

- Moderate
- Heavily Modified / Artificial

Only features within the map frame are shown in the legend - no other surface water receptors or classes of receptor are present.

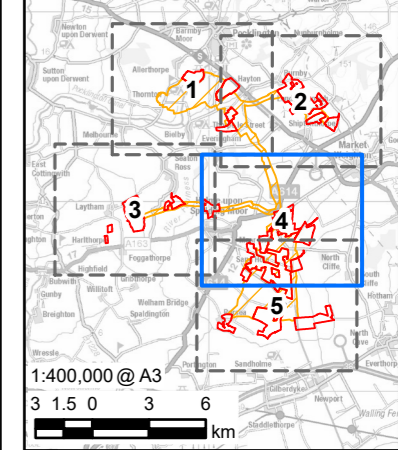
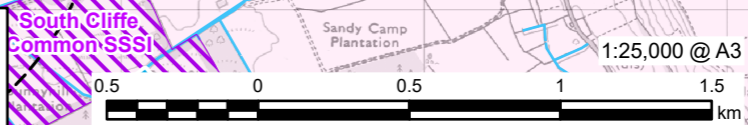
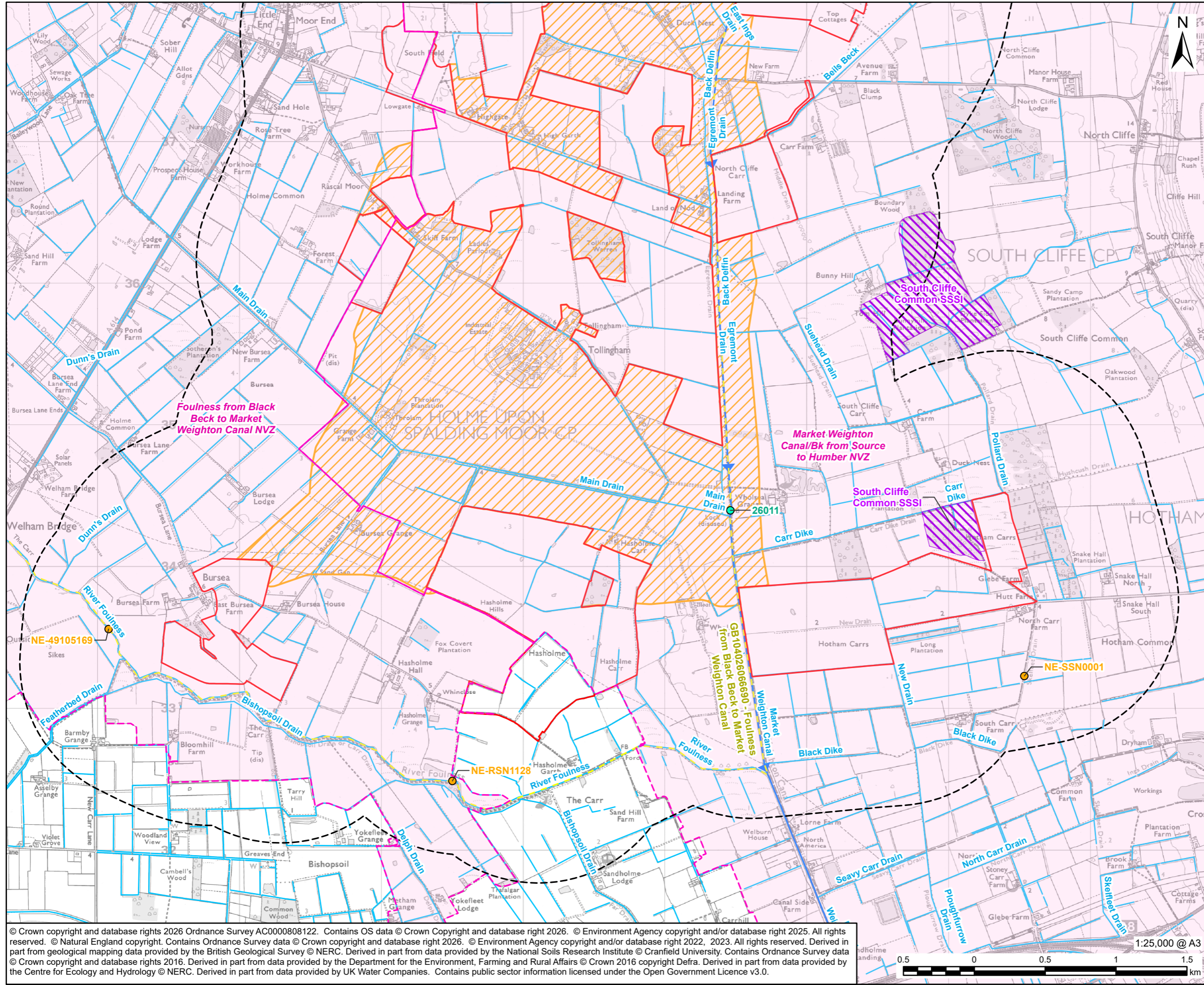


FIGURE TITLE
 Surface Water Receptors and their Attributes
 Sheet 4 of 5
FIGURE NUMBER
 Figure 9-1

© Crown copyright and database rights 2026 Ordnance Survey AC0000808122. Contains OS data © Crown Copyright and database right 2026. © Environment Agency copyright and/or database right 2025. All rights reserved. © Natural England copyright. Contains Ordnance Survey data © Crown copyright and database right 2022, 2023. All rights reserved. Derived in part from geological mapping data provided by the British Geological Survey © NERC. Derived in part from data provided by the National Soils Research Institute © Cranfield University. Contains Ordnance Survey data © Crown copyright and database rights 2016. Derived in part from data provided by the Department for the Environment, Farming and Rural Affairs © Crown 2016 copyright Defra. Derived in part from data provided by the Centre for Ecology and Hydrology © NERC. Derived in part from data provided by UK Water Companies. Contains public sector information licensed under the Open Government Licence v3.0.



This drawing has been prepared for the use of AECOM's client. It may not be used, modified, reproduced or relied upon by third parties, except as agreed by AECOM or as required by law. AECOM accepts no responsibility, and denies any liability whatsoever, to any party that uses or relies on this drawing without AECOM's express written consent. All measurements must be obtained from the stated dimensions.



AECOM
 PROJECT
HUMBERHEAD SOLAR
 CLIENT
 Island GREEN POWER
 CONSULTANT
 AECOM Limited
 3 Rivergate
 Bristol, BS1 6EW
 www.aecom.com

LEGEND

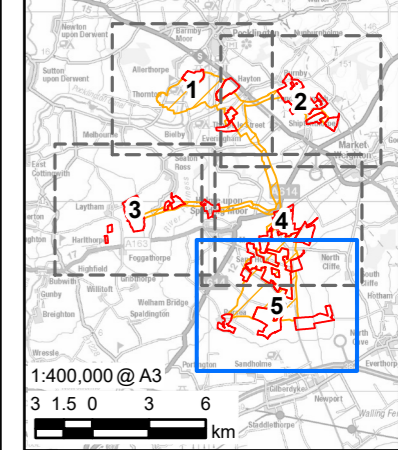
Scoping Site Boundary

- Humberhead Sites
- Cable Route Search Corridor
- Study Area (1km Buffer of the Scoping Site Boundary)
- National River Flows Archive Gauging Station
- Environment Agency Water Quality Monitoring Location
- Main River
- Surface Watercourse
- Nitrate Vulnerable Zone (NVZ)
- Site of Special Scientific Interest (SSSI)

Water Framework Directive (WFD) Watercourse - Overall Status

- Moderate

Only features within the map frame are shown in the legend - no other surface water receptors or classes of receptor are present.



© Crown copyright and database rights 2026 Ordnance Survey AC0000808122. Contains OS data © Crown Copyright and database right 2026. © Environment Agency copyright and/or database right 2025. All rights reserved. © Natural England copyright. Contains Ordnance Survey data © Crown copyright and database right 2026. © Environment Agency copyright and/or database right 2022, 2023. All rights reserved. Derived in part from geological mapping data provided by the British Geological Survey © NERC. Derived in part from data provided by the National Soils Research Institute © Cranfield University. Contains Ordnance Survey data © Crown copyright and database rights 2016. Derived in part from data provided by the Department for the Environment, Farming and Rural Affairs © Crown 2016 copyright Defra. Derived in part from data provided by the Centre for Ecology and Hydrology © NERC. Derived in part from data provided by UK Water Companies. Contains public sector information licensed under the Open Government Licence v3.0.

1:25,000 @ A3
 0.5 0 0.5 1 1.5 km

FIGURE TITLE
 Surface Water Receptors and their Attributes
 Sheet 5 of 5
FIGURE NUMBER
 Figure 9-1



HUMBERHEAD
SOLAR