



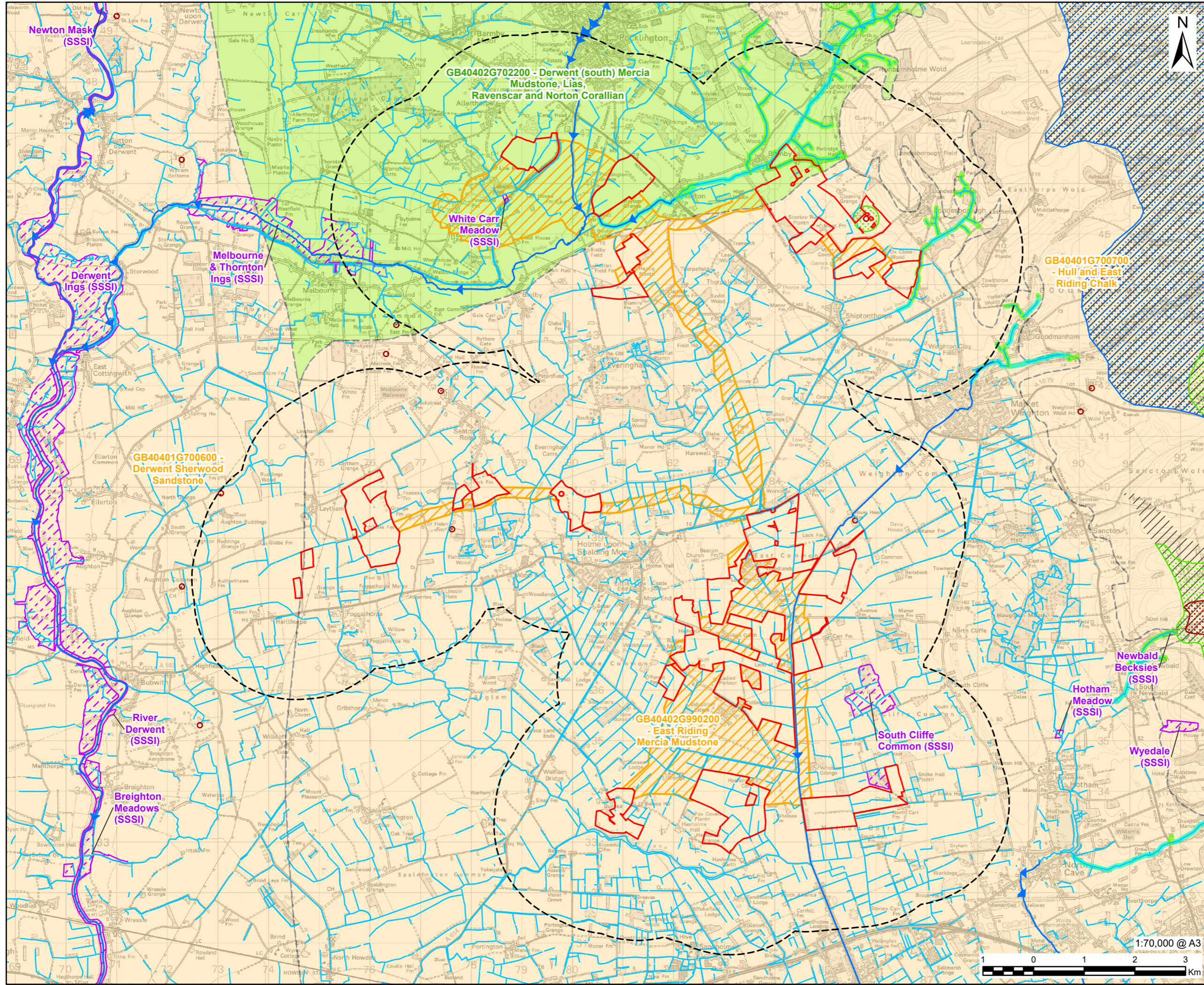
Environmental Impact Assessment Scoping Report

EN0110032

Figures Part 4: 9-2 to 9-4 (Sheets 1-2)

Part 1	
Figure 1-1	Site Location and Scoping Site Boundary
Figure 1-2	Site Boundary and Land Use
Figure 3-1	Humberhead Sites Field Boundaries
Figure 3-2	Environmental Constraints
Figure 7-1	Study Area Landscape and Visual Appraisal (LVIA)
Figure 7-2	Aerial Photography
Figure 7-3	Landform
Figure 7-4	Landscape Character Areas
Part 2	
Figure 7-5	Landscape Receptors
Figure 7-6	Visual Receptors
Figure 7-7	Flood Risk
Figure 7-8	Agricultural Land Classification
Figure 7-9	Bare Earth Zone of Theoretical Visibility
Figure 7-10	Augmented Zone of Theoretical Visibility
Figure 7-11	Private Receptors
Figure 7-12	Public Receptors
Figure 7-13	Transport Receptors
Part 3	
Figure 7-14	Viewpoints
Figure 8-1	Internationally Statutory Designated Sites
Figure 8-2	National Statutory Designated Sites
Figure 8-3	SSSI Impact Risk Zone
Figure 8-4	Non-Statutory Designated Sites
Figure 8-5	Non-Breeding Bird survey plans for the Humberhead Sites - Overview
Figure 9-1	Surface Water Receptors and their Attributes
Part 4	
Figure 9-2	Ground Water Receptors and their Attributes
Figure 9-3	Fluvial Flood Risk
Figure 9-4	Surface Water Flood Risk (Sheets 1-2)
Part 5	
Figure 9-4	Surface Water Flood Risks (Sheets 3-6)
Figure 9-5	Catchment Plan for Surface Water Framework Directive (WFD) Waterbodies
Part 6	
Figure 10-1	Designated Heritage Assets
Figure 10-2	Non-Designated Heritage Assets
Part 7	
Figure 11-1	Transport Study Area
Figure 11-2	Public Rights of Way

Part 7	
Figure 12-1	Noise and Vibration Study Areas, Sensitive Receptors and Noise Monitoring Locations
Figure 14-1-1	Air Quality Monitoring Locations under the Responsibility of the Local Authority
Figure 14-1-2	Air Quality Study Area
Figure 14-2-1	Predictive Agriculture Land Classification
Figure 14-2-2	Soil Associations



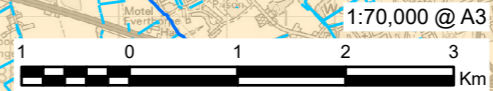
- LEGEND**
- Scoping Site Boundary**
 - Humberhead Sites
 - Cable Route Search Corridor
 - Study Area (2km Buffer of the Scoping Site Boundary)
 - Main River
 - Surface Watercourse
 - Chalk River - High Certainty
 - Chalk River - Low Certainty
 - Drinking Water Safeguard Zone (Groundwater)
 - Groundwater Dependent Terrestrial Ecosystems (GWTDE)
 - Source Protection Zone (SPZ)**
 - Zone 1
 - Zone 2
 - Zone 3
 - Water Framework Directive (WFD) Ground Waterbody - Status**
 - Good
 - Poor

NOTES

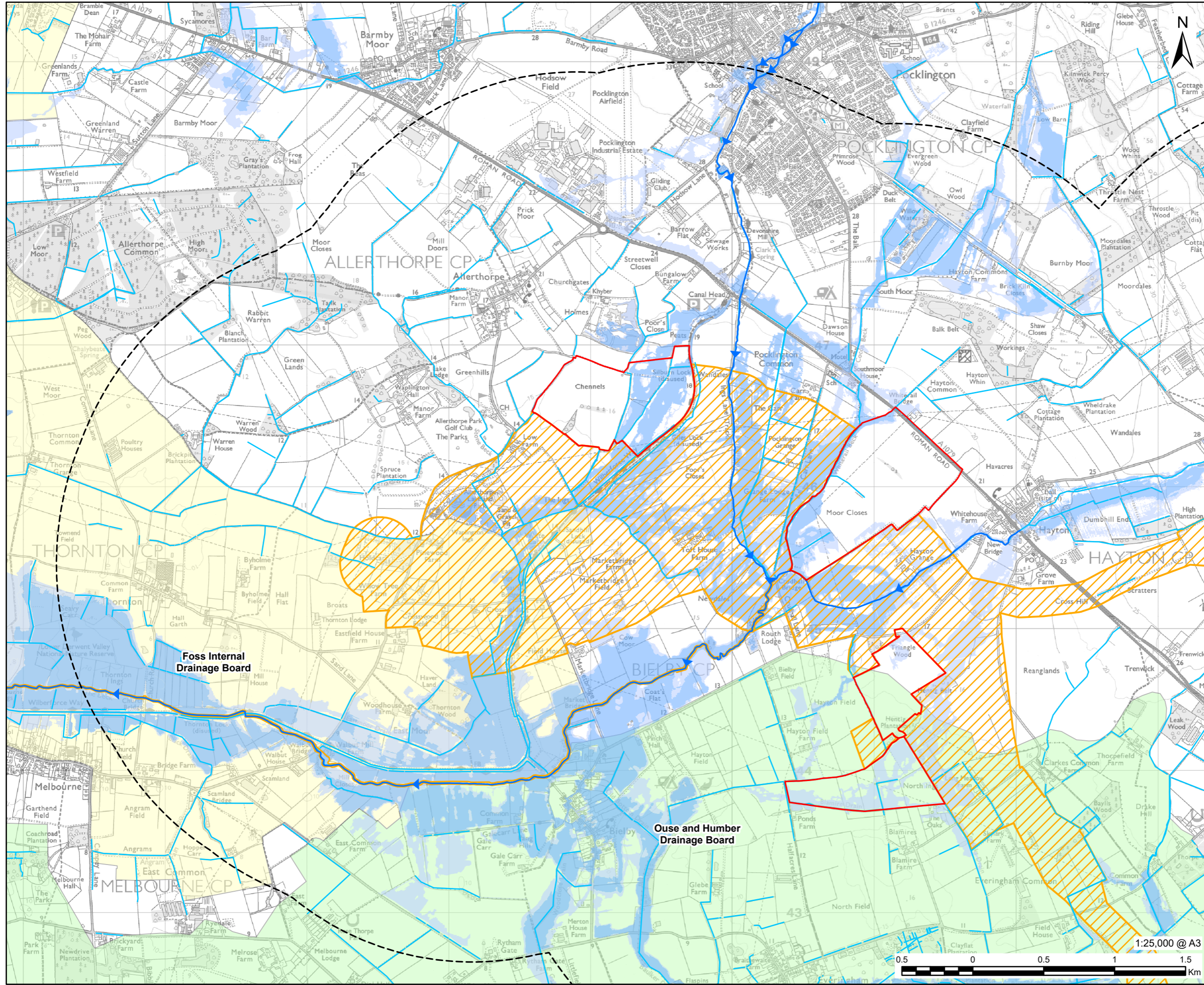
© Crown copyright and database rights 2026 Ordnance Survey AC0000808122. Contains OS data © Crown Copyright and database right 2026. © Environment Agency copyright and/or database right 2025. All rights reserved. © Natural England copyright. Contains Ordnance Survey data © Crown copyright and database right 2026. Contains Environment Agency information © Environment Agency and/or database rights. Derived from BGS digital data under licence from British Geological Survey copyright NERC. Contains Ordnance Survey data © Crown copyright and database right [2016].

FIGURE TITLE
Ground Water Receptors and their Attributes

FIGURE NUMBER
Figure 9-2

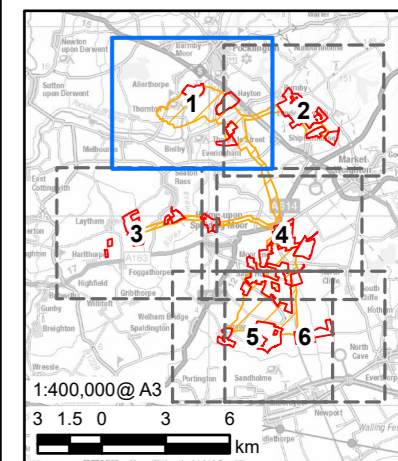


This drawing has been prepared for the use of AECOM's client. It may not be used, modified, reproduced or relied upon by third parties, except as agreed by AECOM or as required by law. AECOM accepts no responsibility, and denies any liability whatsoever, to any party that uses or relies on this drawing without AECOM's express written consent. Do not scale this document. All measurements must be obtained from the stated dimensions.



AECOM
 PROJECT
HUMBERHEAD SOLAR
 CLIENT
 Island GREEN POWER
 CONSULTANT
 AECOM Limited
 3 Rivergate
 Bristol, BS1 6EW
 www.aecom.com

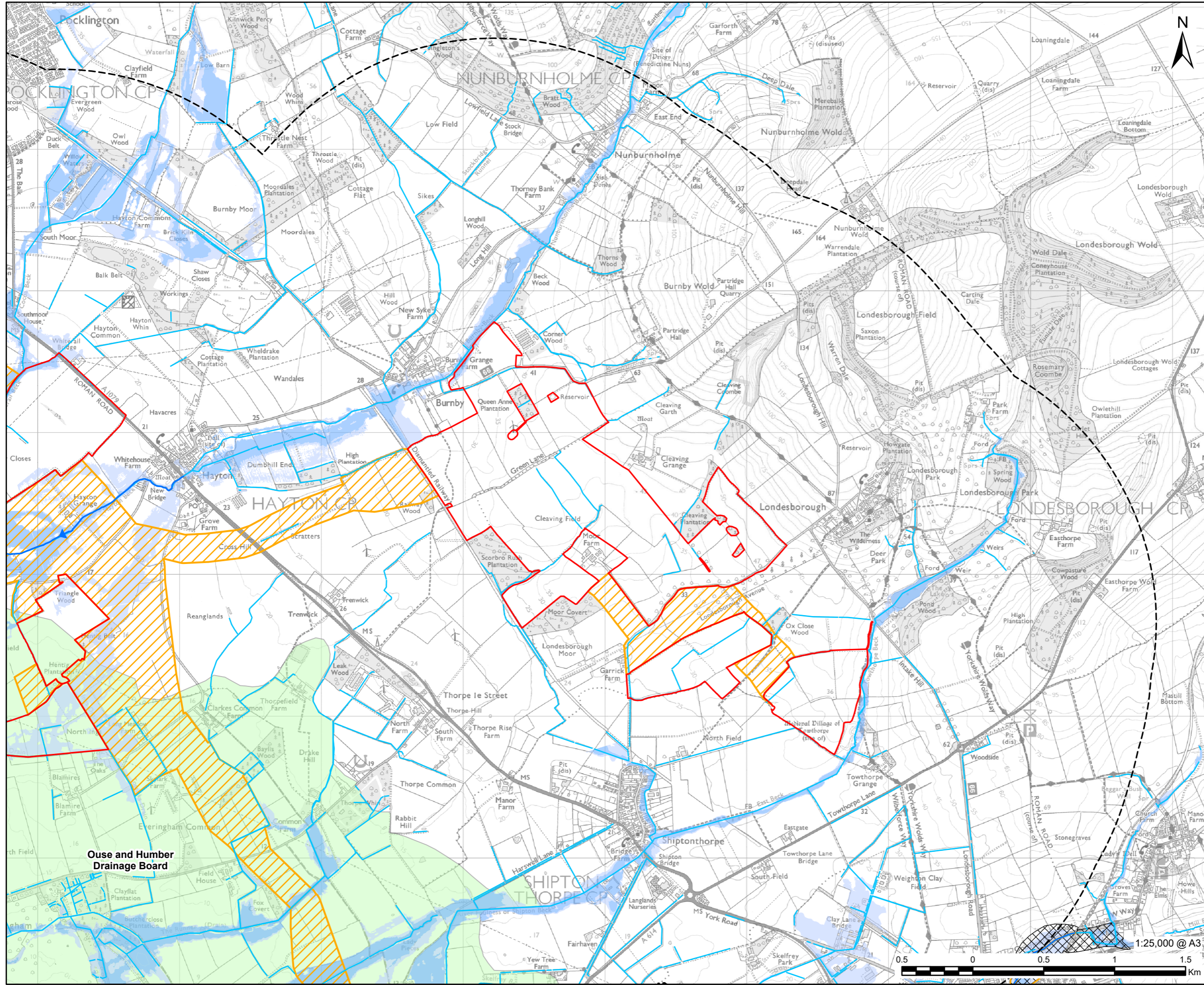
LEGEND
Scoping Site Boundary
 Humberhead Sites
 Cable Route Search Corridor
 Study Area (2km Buffer of the Scoping Site Boundary)
 Main River
 Surface Watercourse
 Flood Defence
 Flood Zone 3
 Flood Zone 2
 Foss Internal Drainage Board
 Ouse and Humber Drainage Board



NOTES
 © Crown copyright and database rights 2026 Ordnance Survey AC0000808122. Contains OS data © Crown Copyright and database right 2026. © Association of Drainage Authorities copyright and/or database right 2020. All rights reserved. © Environment Agency copyright and/or database right 2020,2025. All rights reserved. Some features of this map are based on digital spatial data from the Centre for Ecology & Hydrology, © NERC (CEH) © Crown Copyright and Database Rights 2025 OS AC0000807064.

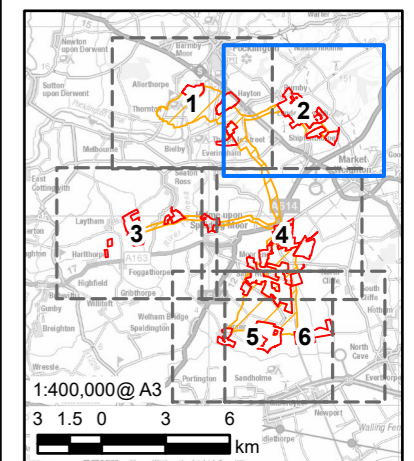
FIGURE TITLE
 Fluvial Flood Risk
 Sheet 1 of 6
FIGURE NUMBER
 Figure 9-3

This drawing has been prepared for the use of AECOM's client. It may not be used, modified, reproduced or relied upon by third parties, except as signed by AECOM or as required by law. AECOM accepts no responsibility, and denies any liability whatsoever, to any party that uses or relies on this drawing without AECOM's express written consent. Do not scale this document. All measurements must be obtained from the stated dimensions.



CONSULTANT
 AECOM Limited
 3 Rivergate
 Bristol, BS1 6EW
 www.aecom.com

- LEGEND**
- Humberhead Sites
 - Cable Route Search Corridor
 - Study Area (2km Buffer of the Scoping Site Boundary)
 - Main River
 - Surface Watercourse
 - Flood Defence
 - Water Storage Area
 - Flood Zone 3
 - Flood Zone 2
 - Ouse and Humber Drainage Board



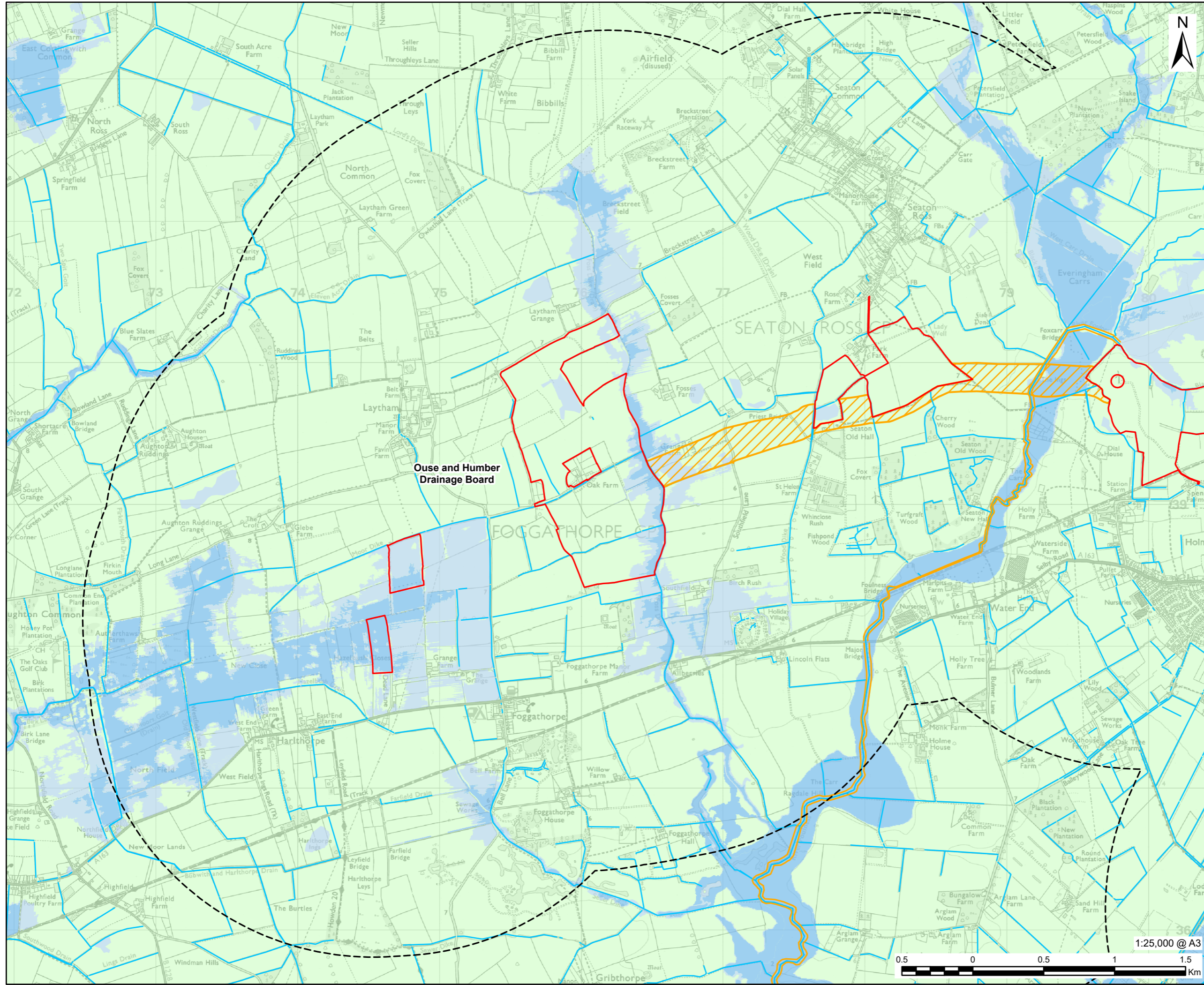
NOTES

© Crown copyright and database rights 2026
 Ordnance Survey AC0000808122. Contains OS data © Crown Copyright and database right 2026. © Association of Drainage Authorities copyright and/or database right 2020. All rights reserved. © Environment Agency copyright and/or database right 2020,2025. All rights reserved. Some features of this map are based on digital spatial data from the Centre for Ecology & Hydrology, © NERC (CEH) © Crown Copyright and Database Rights 2025 OS AC0000807064.

FIGURE TITLE
 Fluvial Flood Risk
 Sheet 2 of 6

FIGURE NUMBER
 Figure 9-3

This drawing has been prepared for the use of AECOM's client. It may not be used, modified, reproduced or relied upon by third parties, except as agreed by AECOM or as required by law. AECOM accepts no responsibility, and denies any liability whatsoever, to any party that uses or relies on this drawing without AECOM's express written consent. Do not scale this document. All measurements must be obtained from the stated dimensions.

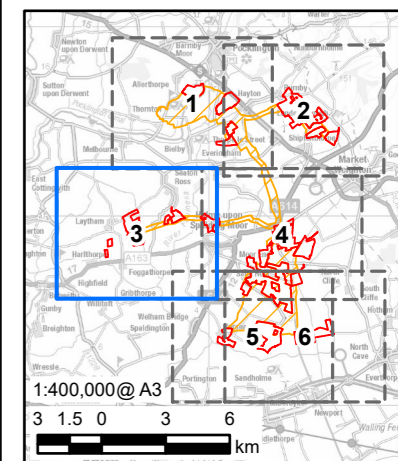


AECOM
 PROJECT
HUMBERHEAD SOLAR
 CLIENT
 Island GREEN POWER
 CONSULTANT
 AECOM Limited
 3 Rivergate
 Bristol, BS1 6EW
 www.aecom.com

LEGEND

Scoping Site Boundary

- Humberhead Sites
- Cable Route Search Corridor
- Study Area (2km Buffer of the Scoping Site Boundary)
- Surface Watercourse
- Flood Defence
- Flood Zone 3
- Flood Zone 2
- Ouse and Humber Drainage Board



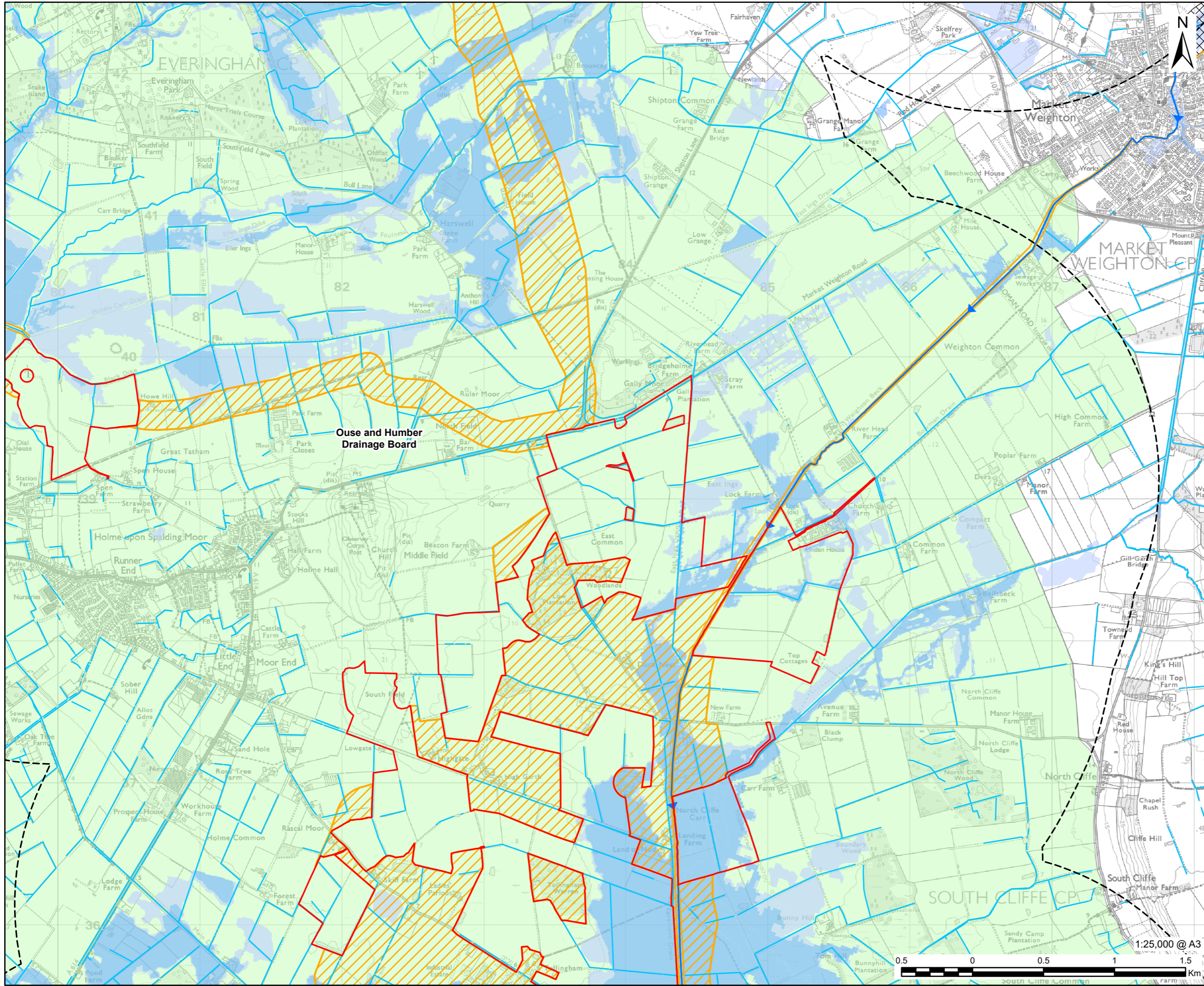
NOTES

© Crown copyright and database rights 2026 Ordnance Survey AC0000808122. Contains OS data © Crown Copyright and database right 2026. © Association of Drainage Authorities copyright and/or database right 2020. All rights reserved. © Environment Agency copyright and/or database right 2020,2025. All rights reserved. Some features of this map are based on digital spatial data from the Centre for Ecology & Hydrology, © NERC (CEH) © Crown Copyright and Database Rights 2025 OS AC0000807064.

FIGURE TITLE
 Fluvial Flood Risk
 Sheet 3 of 6

FIGURE NUMBER
 Figure 9-3

This drawing has been prepared for the use of AECOM's client. It may not be used, modified, reproduced or relied upon by third parties, except as agreed by AECOM or as required by law. AECOM accepts no responsibility, and denies any liability whatsoever, to any party that uses or relies on this drawing without AECOM's express written consent. Do not scale this document. All measurements must be obtained from the stated dimensions.



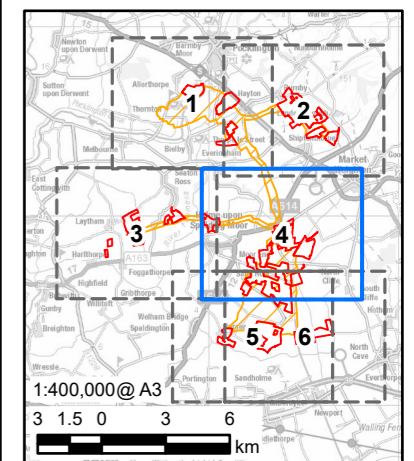
CLIENT

Island GREEN POWER

CONSULTANT

AECOM Limited
3 Rivergate
Bristol, BS1 6EW
www.aecom.com

- LEGEND**
- Humberhead Sites
 - Cable Route Search Corridor
 - Study Area (2km Buffer of the Scoping Site Boundary)
 - Main River
 - Surface Watercourse
 - Flood Defence
 - Water Storage Area
 - Flood Zone 3
 - Flood Zone 2
 - Ouse and Humber Drainage Board



NOTES

© Crown copyright and database rights 2026 Ordnance Survey AC0000808122. Contains OS data © Crown Copyright and database right 2026. © Association of Drainage Authorities copyright and/or database right 2020. All rights reserved. © Environment Agency copyright and/or database right 2020,2025. All rights reserved. Some features of this map are based on digital spatial data from the Centre for Ecology & Hydrology, © NERC (CEH) © Crown Copyright and Database Rights 2025 OS AC0000807064.

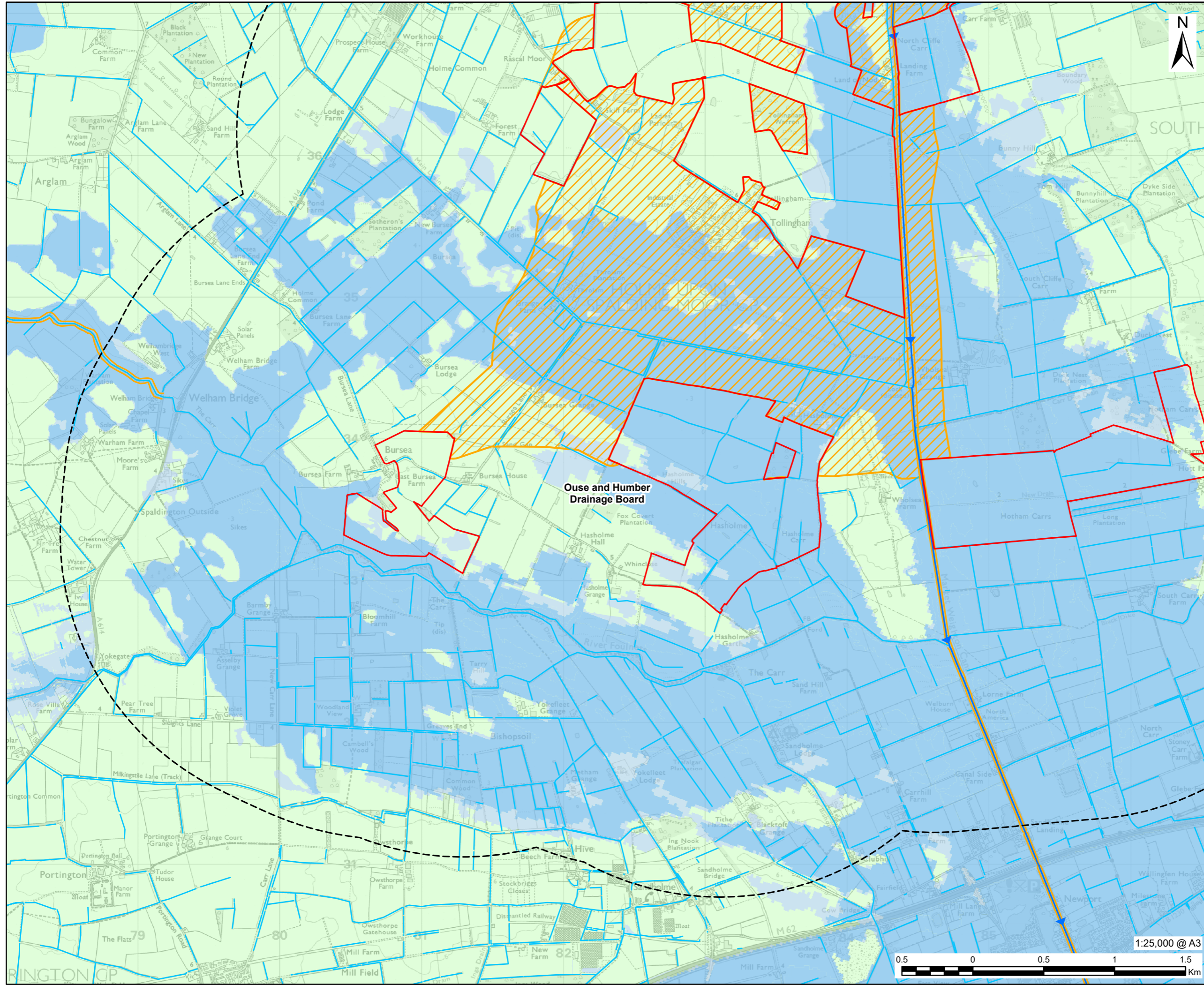
FIGURE TITLE

Fluvial Flood Risk
Sheet 4 of 6

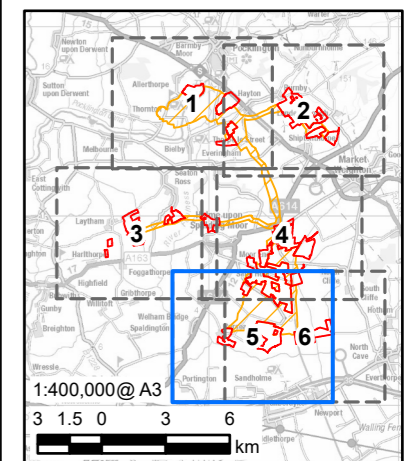
FIGURE NUMBER

Figure 9-3

This drawing has been prepared for the use of AECOM's client. It may not be used, modified, reproduced or relied upon by third parties, except as agreed by AECOM or as required by law. AECOM accepts no responsibility, and denies any liability whatsoever, to any party that uses or relies on this drawing without AECOM's express written consent. Do not scale this document. All measurements must be obtained from the stated dimensions.



- LEGEND**
- Scoping Site Boundary**
 - Humberhead Sites
 - Cable Route Search Corridor
 - Study Area (2km Buffer of the Scoping Site Boundary)
 - Main River
 - Surface Watercourse
 - Flood Defence
 - Flood Zone 3
 - Flood Zone 2
 - Ouse and Humber Drainage Board



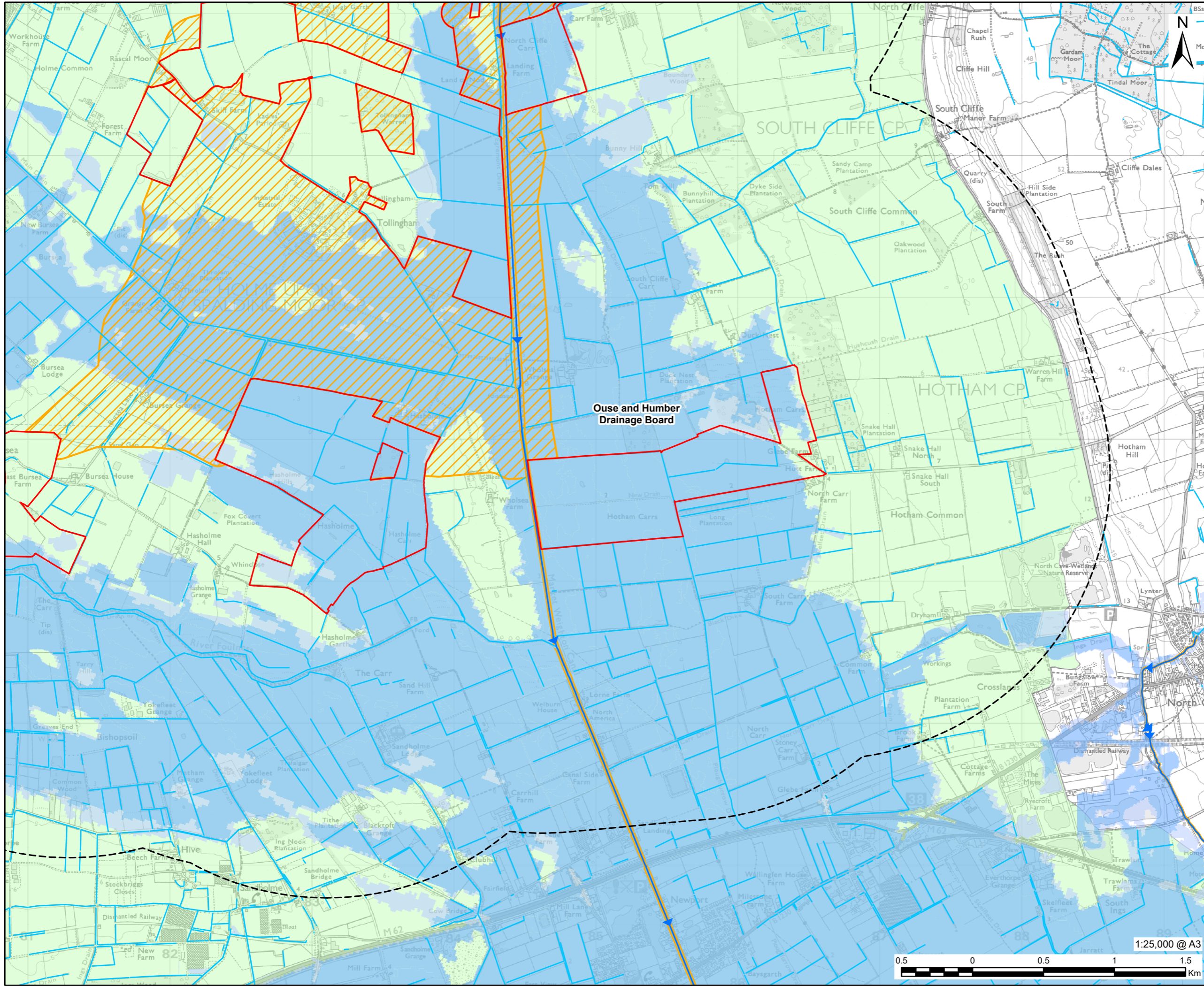
NOTES

© Crown copyright and database rights 2026 Ordnance Survey AC0000808122. Contains OS data © Crown Copyright and database right 2026. © Association of Drainage Authorities copyright and/or database right 2020. All rights reserved. © Environment Agency copyright and/or database right 2020,2025. All rights reserved. Some features of this map are based on digital spatial data from the Centre for Ecology & Hydrology, © NERC (CEH) © Crown Copyright and Database Rights 2025 OS AC0000807064.

FIGURE TITLE
Fluvial Flood Risk
Sheet 5 of 6

FIGURE NUMBER
Figure 9-3

This drawing has been prepared for the use of AECOM's client. It may not be used, modified, reproduced or relied upon by third parties, except as agreed by AECOM or as required by law. AECOM accepts no responsibility, and denies any liability whatsoever, to any party that uses or relies on this drawing without AECOM's express written consent. Do not scale this document. All measurements must be obtained from the stated dimensions.



PROJECT



CLIENT

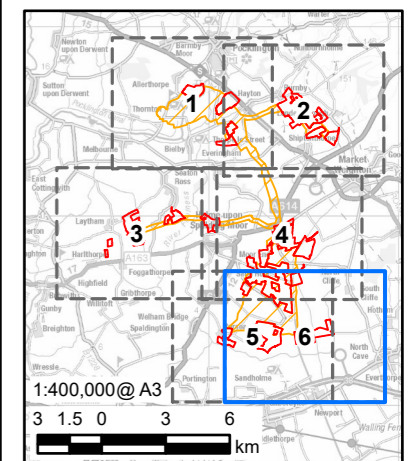


CONSULTANT

AECOM Limited
3 Rivergate
Bristol, BS1 6EW
www.aecom.com

LEGEND

- Scoping Site Boundary**
- Humberhead Sites
 - Cable Route Search Corridor
 - Study Area (2km Buffer of the Scoping Site Boundary)
 - Main River
 - Surface Watercourse
 - Flood Defence
 - Flood Zone 3
 - Flood Zone 2
 - Ouse and Humber Drainage Board



NOTES

© Crown copyright and database rights 2026
Ordnance Survey AC0000808122. Contains
OS data © Crown Copyright and database
right 2026. © Association of Drainage
Authorities copyright and/or database right
2020. All rights reserved. © Environment
Agency copyright and/or database right
2020,2025. All rights reserved. Some
features of this map are based on digital
spatial data from the Centre for Ecology &
Hydrology, © NERC (CEH) © Crown
Copyright and Database Rights 2025 OS
AC0000807064.

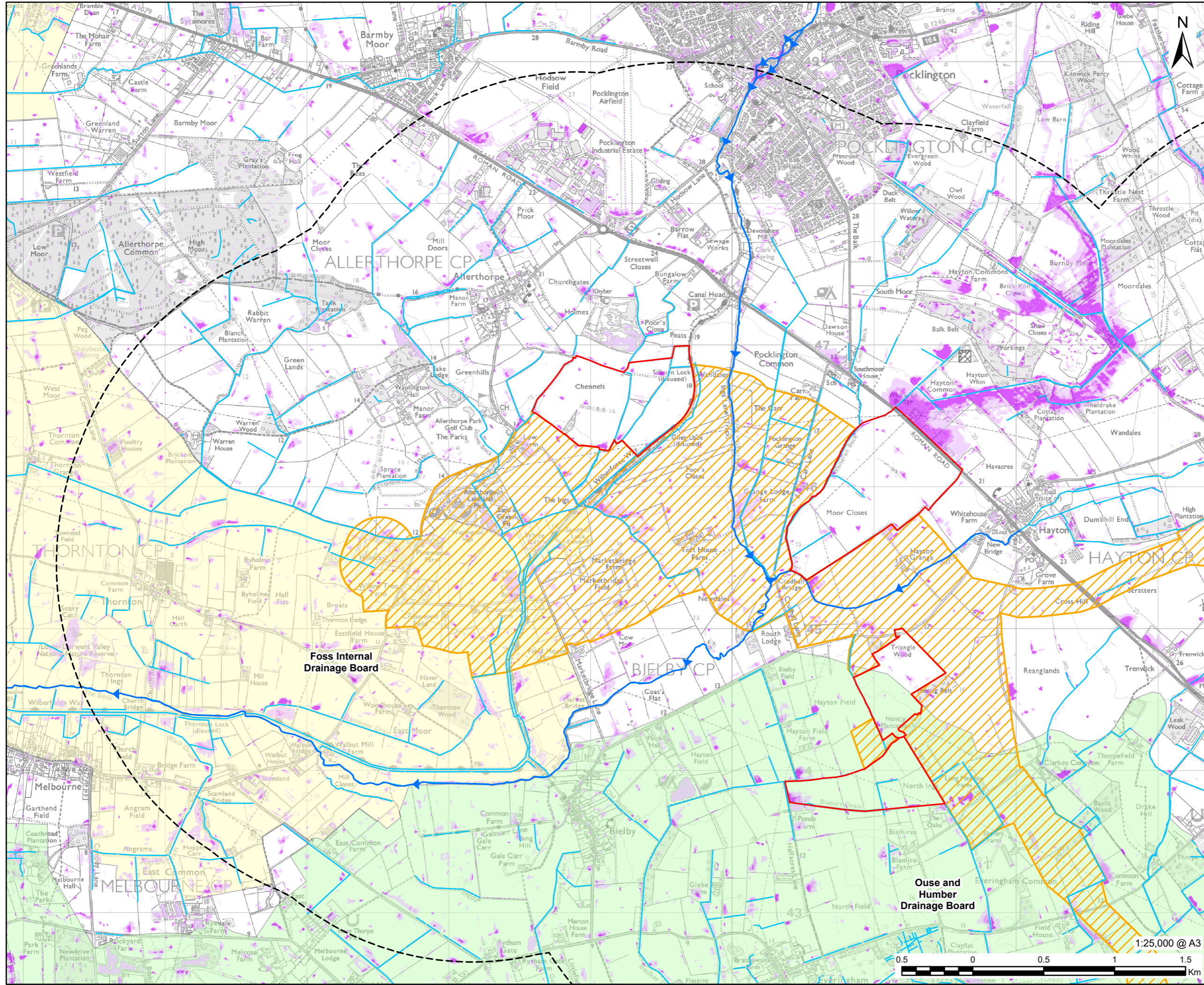
FIGURE TITLE

Fluvial Flood Risk
Sheet 6 of 6

FIGURE NUMBER

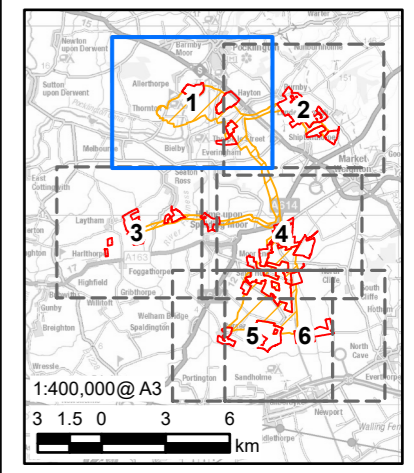
Figure 9-3

This drawing has been prepared for the use of AECOM's client. It may not be used, modified, reproduced or relied upon by third parties, except as agreed by AECOM or as required by law. AECOM accepts no responsibility, and denies any liability whatsoever, to any party that uses or relies on this drawing without AECOM's express written consent. Do not scale this document. All measurements must be obtained from the stated dimensions.



AECOM Limited
3 Rivergate
Bristol, BS1 6EW
www.aecom.com

- Scoping Site Boundary**
- Humberhead Sites
 - Cable Route Search Corridor
 - Study Area (2km Buffer of the Scoping Site Boundary)
 - Main River
 - Surface Watercourse
 - Foss Internal Drainage Board
 - Ouse and Humber Drainage Board
- Risk of Flooding from Surface Water (RoFSW)**
- High
 - Medium
 - Low



NOTES

© Crown copyright and database rights 2026
Ordnance Survey AC0000808122. Contains
OS data © Crown Copyright and database
right 2026. © Association of Drainage
Authorities copyright and/or database right
2020. All rights reserved. © Environment
Agency copyright and/or database right 2025.
All rights reserved.

FIGURE TITLE

Surface Water Flood Risk
Sheet 1 of 6

FIGURE NUMBER

Figure 9-4

This drawing has been prepared for the use of AECOM's client. It may not be used, modified, reproduced or relied upon by third parties, except as agreed by AECOM or as required by law. AECOM accepts no responsibility, and denies any liability whatsoever, to any party that uses or relies on this drawing without AECOM's express written consent. Do not scale this document. All measurements must be obtained from the stated dimensions.



HUMBERHEAD
SOLAR