



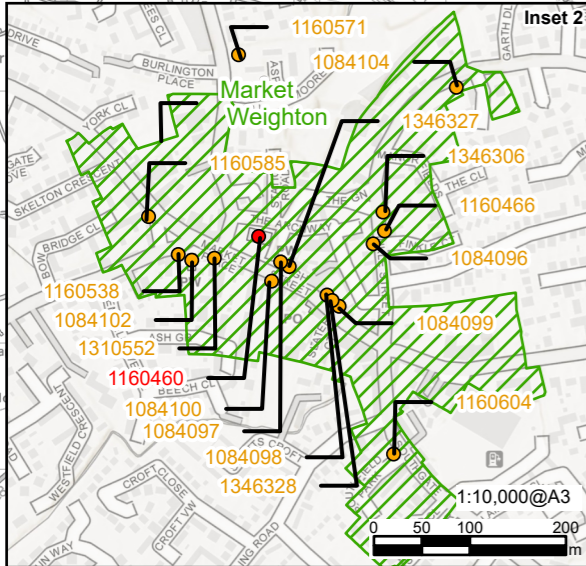
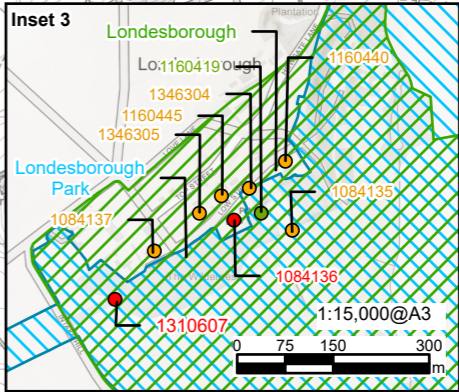
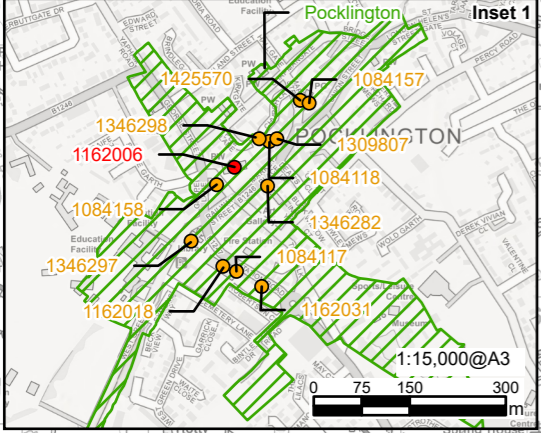
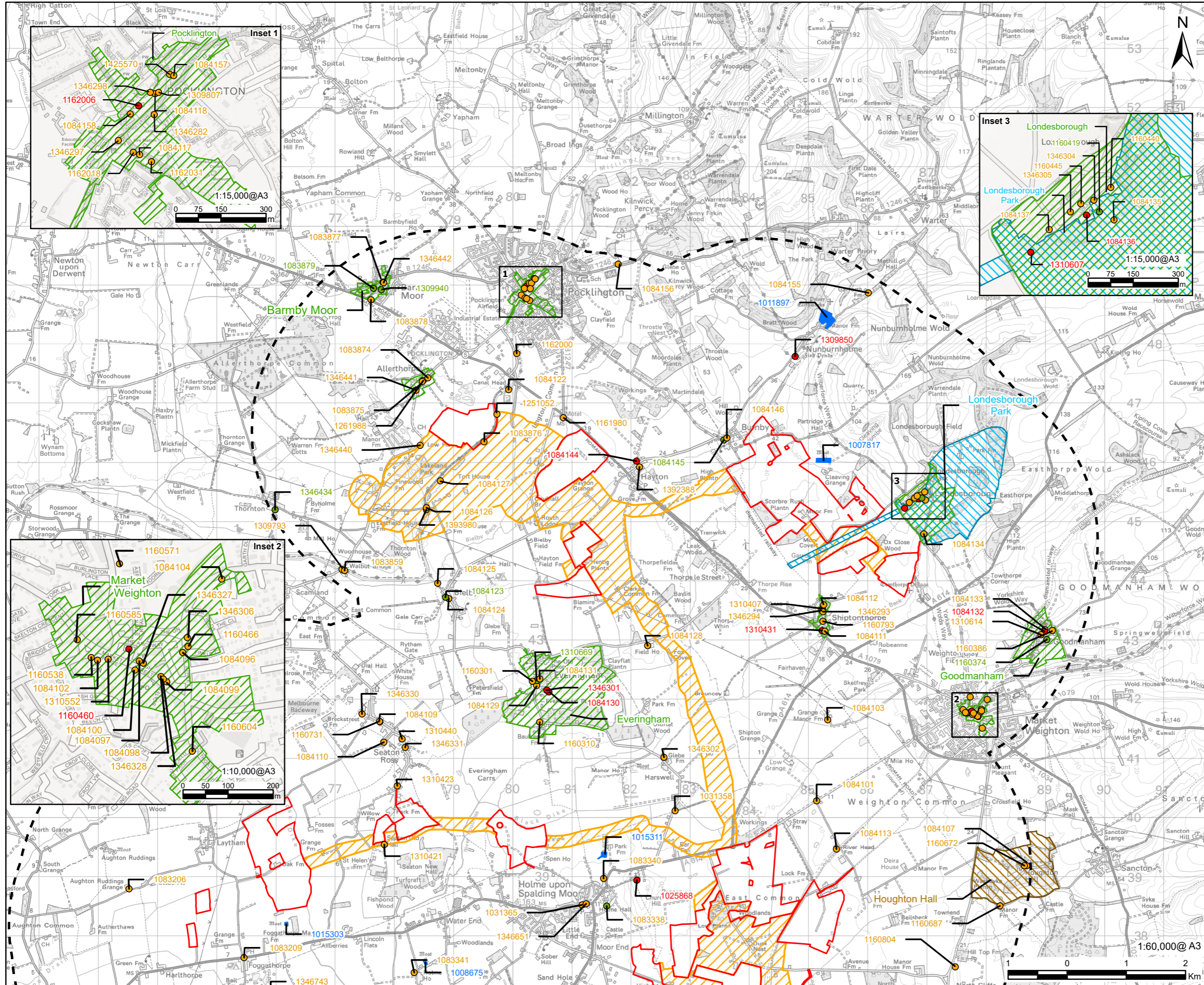
Environmental Impact Assessment Scoping Report

EN0110032

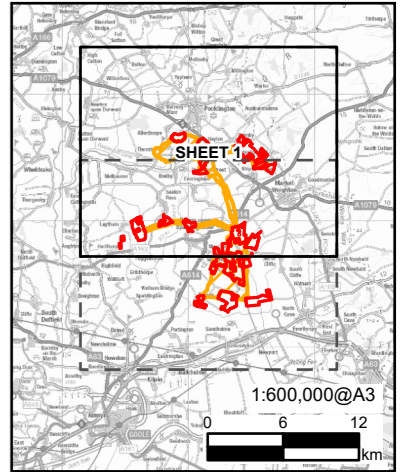
Figures Part 6: 10-1 to 10-2

Part 1	
Figure 1-1	Site Location and Scoping Site Boundary
Figure 1-2	Site Boundary and Land Use
Figure 3-1	Humberhead Sites Field Boundaries
Figure 3-2	Environmental Constraints
Figure 7-1	Study Area Landscape and Visual Appraisal (LVIA)
Figure 7-2	Aerial Photography
Figure 7-3	Landform
Figure 7-4	Landscape Character Areas
Part 2	
Figure 7-5	Landscape Receptors
Figure 7-6	Visual Receptors
Figure 7-7	Flood Risk
Figure 7-8	Agricultural Land Classification
Figure 7-9	Bare Earth Zone of Theoretical Visibility
Figure 7-10	Augmented Zone of Theoretical Visibility
Figure 7-11	Private Receptors
Figure 7-12	Public Receptors
Figure 7-13	Transport Receptors
Part 3	
Figure 7-14	Viewpoints
Figure 8-1	Internationally Statutory Designated Sites
Figure 8-2	National Statutory Designated Sites
Figure 8-3	SSSI Impact Risk Zone
Figure 8-4	Non-Statutory Designated Sites
Figure 8-5	Non-Breeding Bird survey plans for the Humberhead Sites - Overview
Figure 9-1	Surface Water Receptors and their Attributes
Part 4	
Figure 9-2	Ground Water Receptors and their Attributes
Figure 9-3	Fluvial Flood Risk
Figure 9-4	Surface Water Flood Risk (Sheets 1-2)
Part 5	
Figure 9-4	Surface Water Flood Risks (Sheets 3-6)
Figure 9-5	Catchment Plan for Surface Water Framework Directive (WFD) Waterbodies
Part 6	
Figure 10-1	Designated Heritage Assets
Figure 10-2	Non-Designated Heritage Assets
Part 7	
Figure 11-1	Transport Study Area
Figure 11-2	Public Rights of Way

Part 7	
Figure 12-1	Noise and Vibration Study Areas, Sensitive Receptors and Noise Monitoring Locations
Figure 14-1-1	Air Quality Monitoring Locations under the Responsibility of the Local Authority
Figure 14-1-2	Air Quality Study Area
Figure 14-2-1	Predictive Agriculture Land Classification
Figure 14-2-2	Soil Associations



- #### LEGEND
- Scoping Site Boundary
 - Humberhead Sites
 - Cable Route Search Corridor
 - 3km Study Area
 - Listed Building - Grade I
 - Listed Building - Grade II*
 - Listed Building - Grade II
 - Conservation Area
 - Registered Parks and Gardens - Grade II*
 - Registered Parks and Gardens - Grade II
 - Scheduled Monument



NOTES

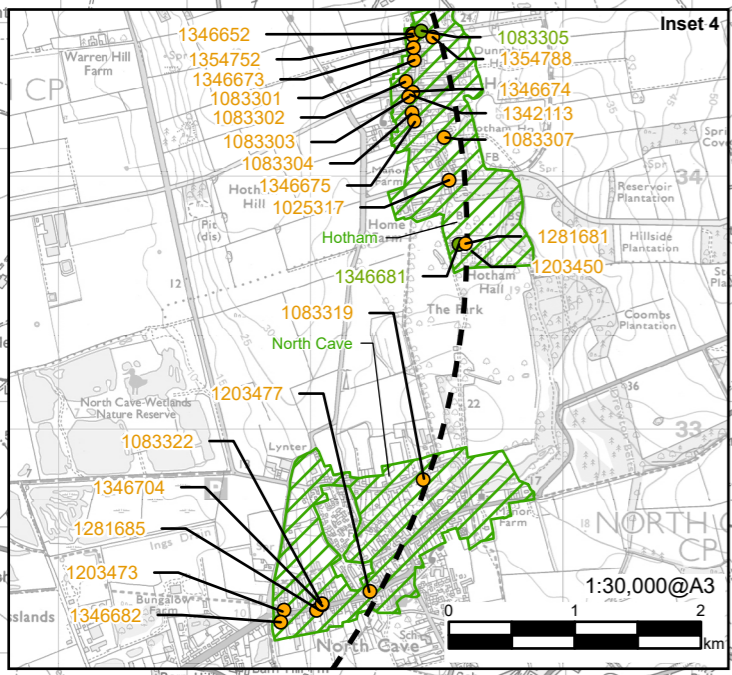
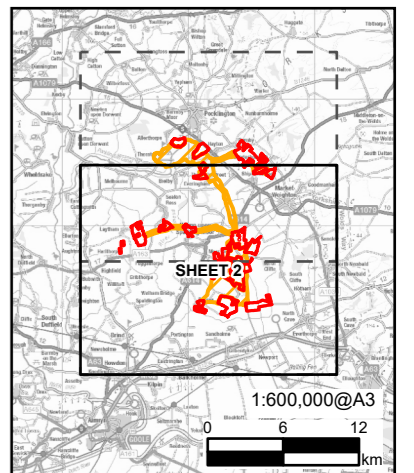
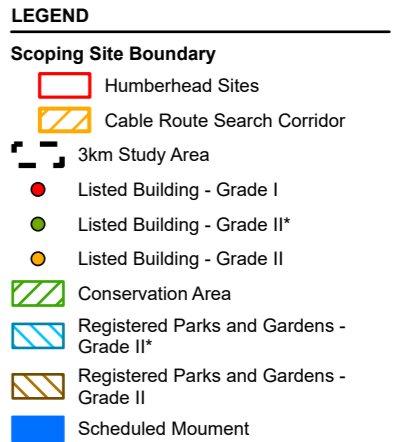
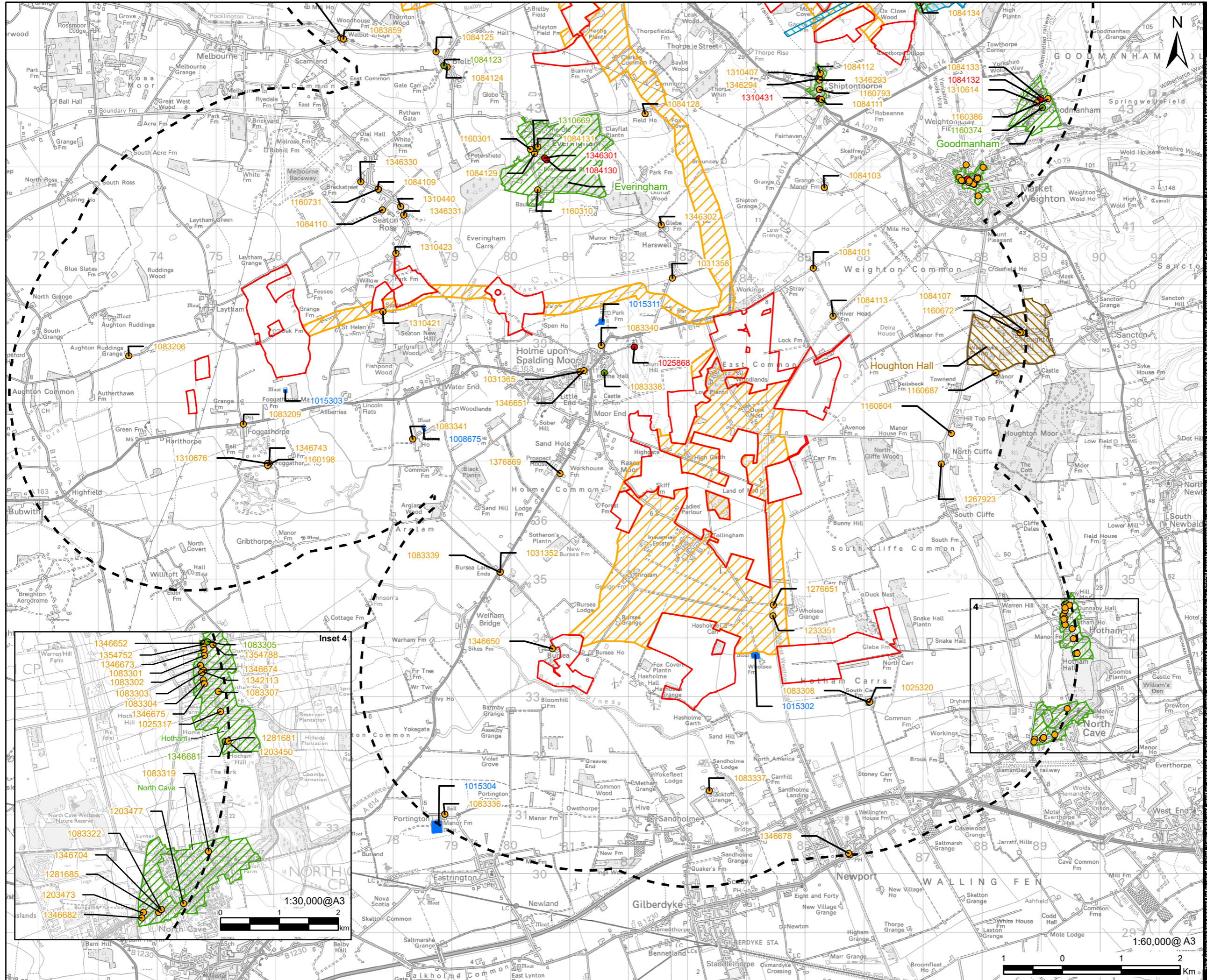
Reproduced from Ordnance Survey digital map data © Crown copyright 2026. All rights reserved. Licence number AC0000808122. © Crown Copyright 2026. Contains Ordnance Survey data © Crown copyright and database right 2026. Released under OGL. © Historic England and Local Planning Authorities 2026. Contains Ordnance Survey data © Crown copyright and database right 2026. Released under OGL.

FIGURE TITLE

Designated Heritage Assets
Sheet 1 of 2

FIGURE NUMBER

Figure 10-1



NOTES

Reproduced from Ordnance Survey digital map data © Crown copyright 2026. All rights reserved. Licence number AC0000808122. © Crown Copyright 2026. Contains Ordnance Survey data © Crown copyright and database right 2026. Released under OGL. © Historic England and Local Planning Authorities 2026. Contains Ordnance Survey data © Crown copyright and database right 2026. Released under OGL.

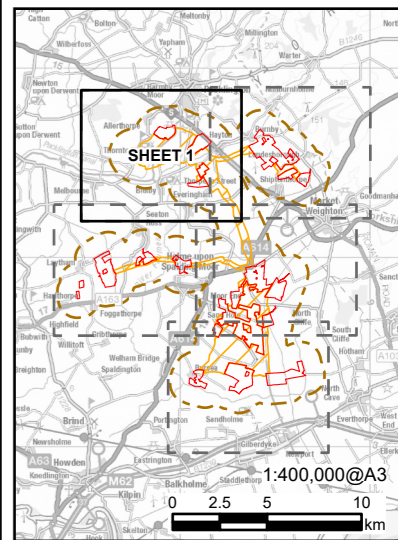
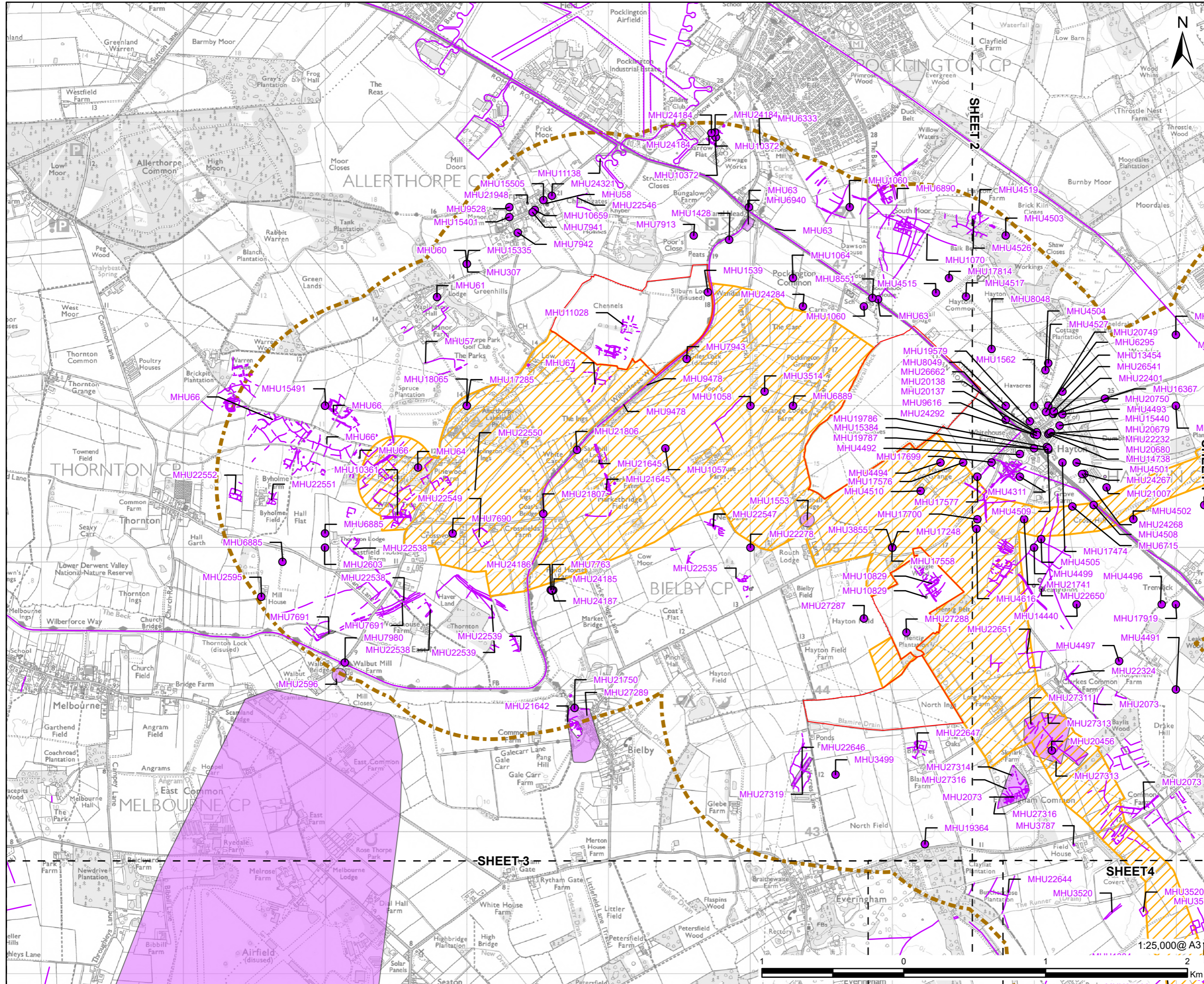
FIGURE TITLE

Designated Heritage Assets
Sheet 2 of 2

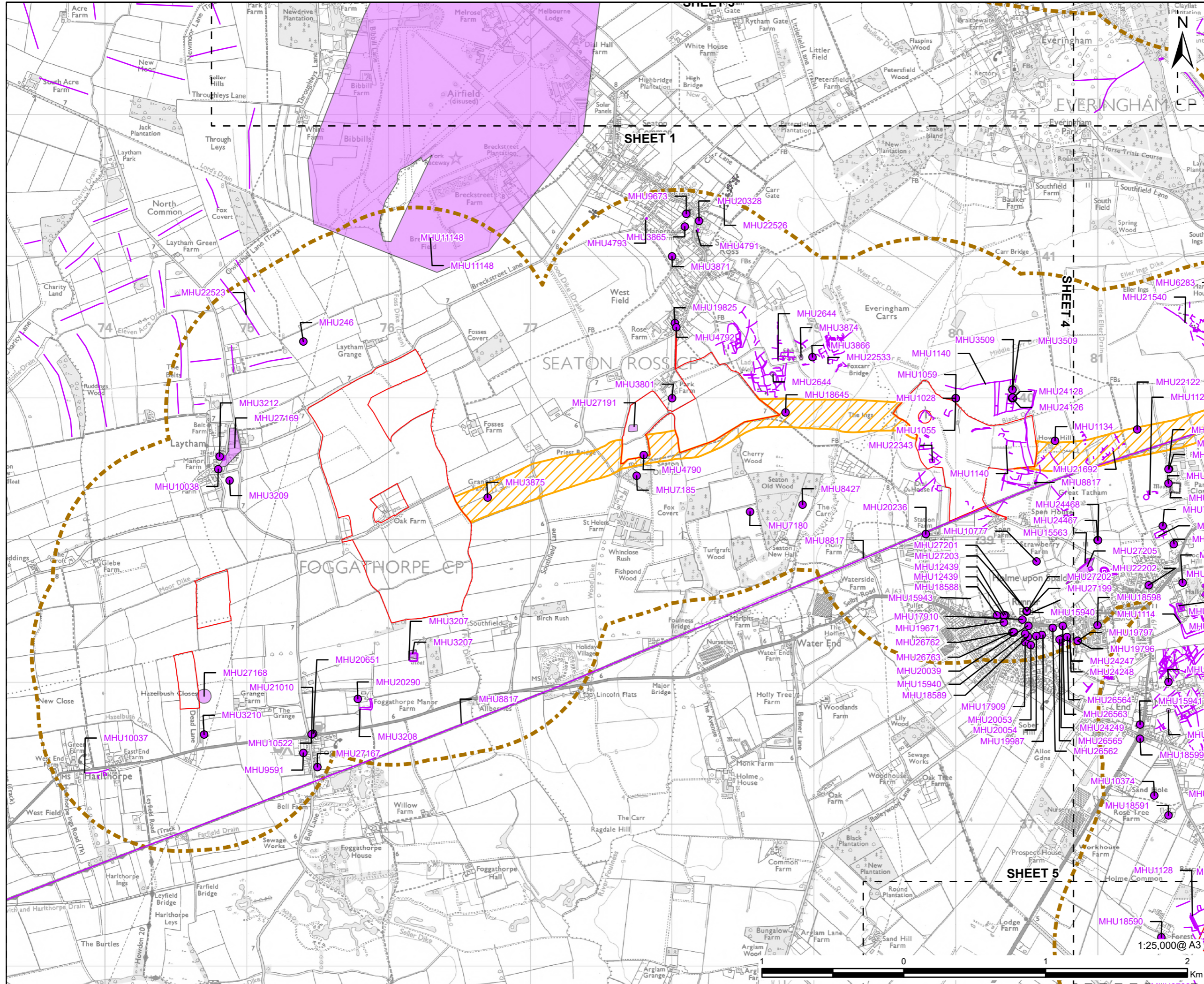
FIGURE NUMBER

Figure 10-1

This drawing has been prepared for the use of the client. It may not be used, modified, reproduced or relied upon by third parties, except as signed by or as required by law. AECOM accepts no responsibility, and denies any liability, whatsoever, to any party that uses or relies on this drawing without the express written consent. Do not scale this document. All measurements must be obtained from the scaled drawings.



This drawing has been prepared for the use of the client. It may not be used, modified, reproduced or relied upon by third parties, except as signed by or on behalf of the client. All measurements must be obtained from the stated dimensions.



AECOM
PROJECT

HUMBERHEAD SOLAR

CLIENT

Island
GREEN POWER

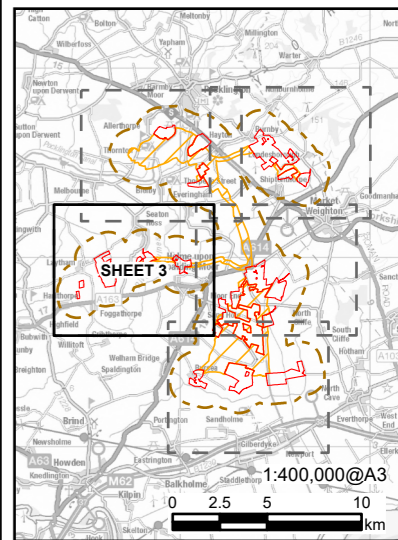
CONSULTANT

AECOM Limited
3 Rivergate
Bristol, BS 1 6EW
www.aecom.com

LEGEND

Scoping Site Boundary

- Humberhead Sites
- Cable Route Search Corridor
- 1km Study Area
- HER Asset-point
- HER Asset-line
- HER Asset-polygon



NOTES

Reproduced from Ordnance Survey digital map data © Crown copyright 2026. All rights reserved. Licence number AC0000808122. HER Data are reproduced with the permission of the Humber HER. Humber Historic Environment Record Copyright ©2026.

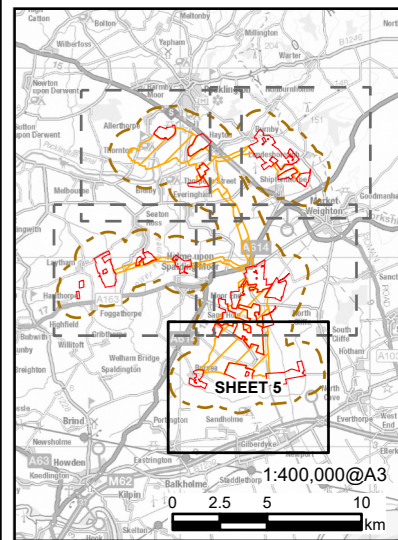
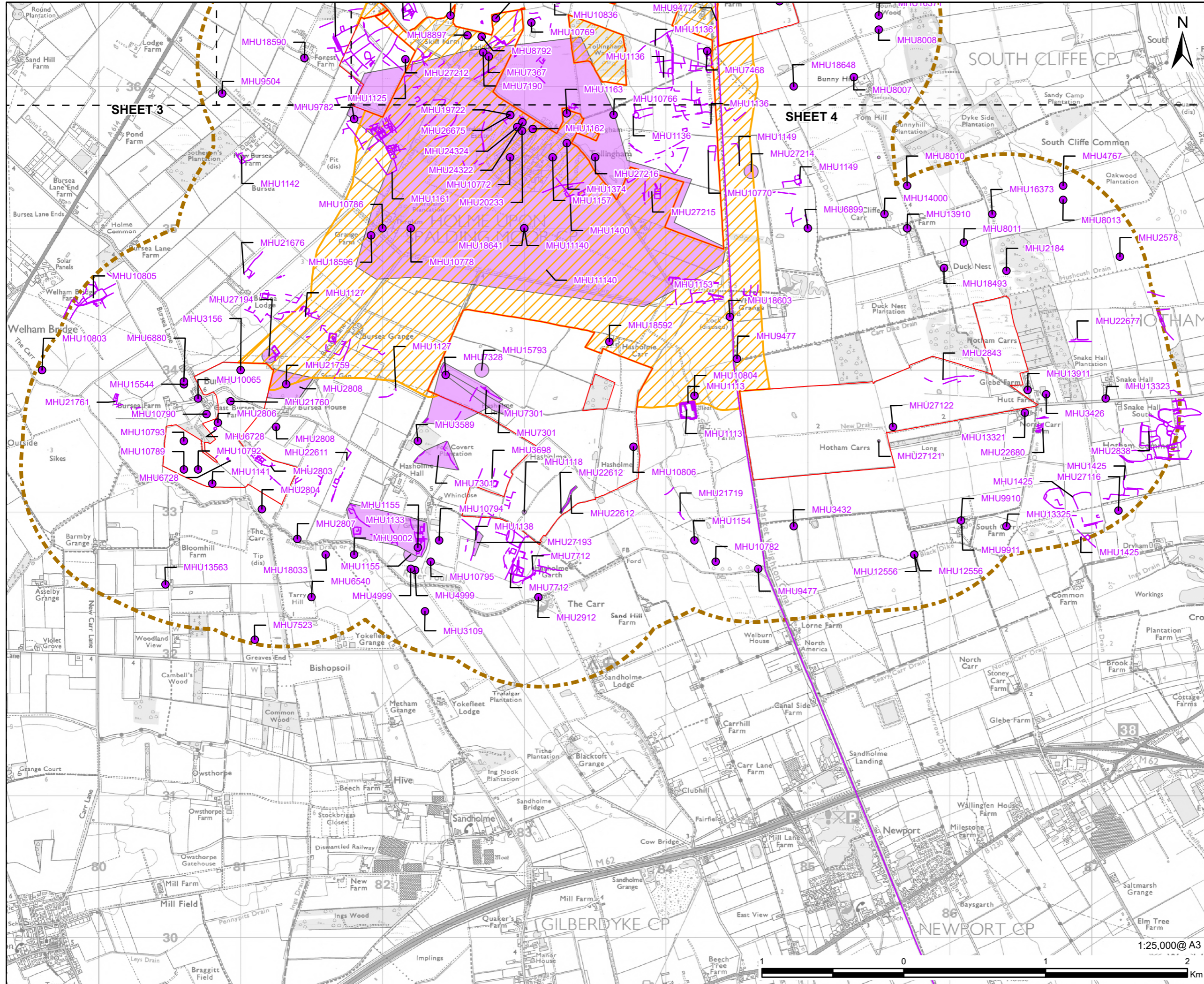
FIGURE TITLE

Non-Designated Heritage Assets
Sheet 3 of 6

FIGURE NUMBER

Figure 10-2

This drawing has been prepared for the use of the client. It may not be used, modified, reproduced or relied upon by third parties, except as signed by or on behalf of AECOM. AECOM accepts no responsibility, and disclaims any liability, whatsoever, to any party that uses or relies on this document. All measurements must be obtained from the stated dimensions.

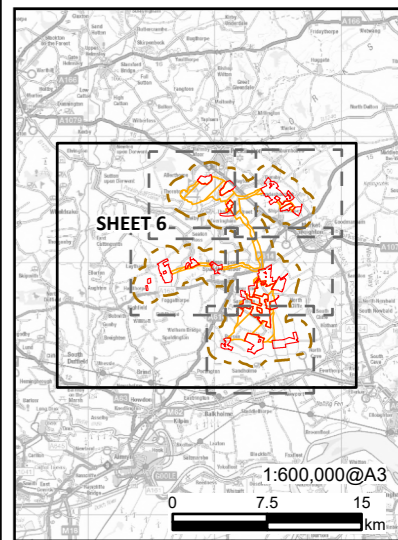
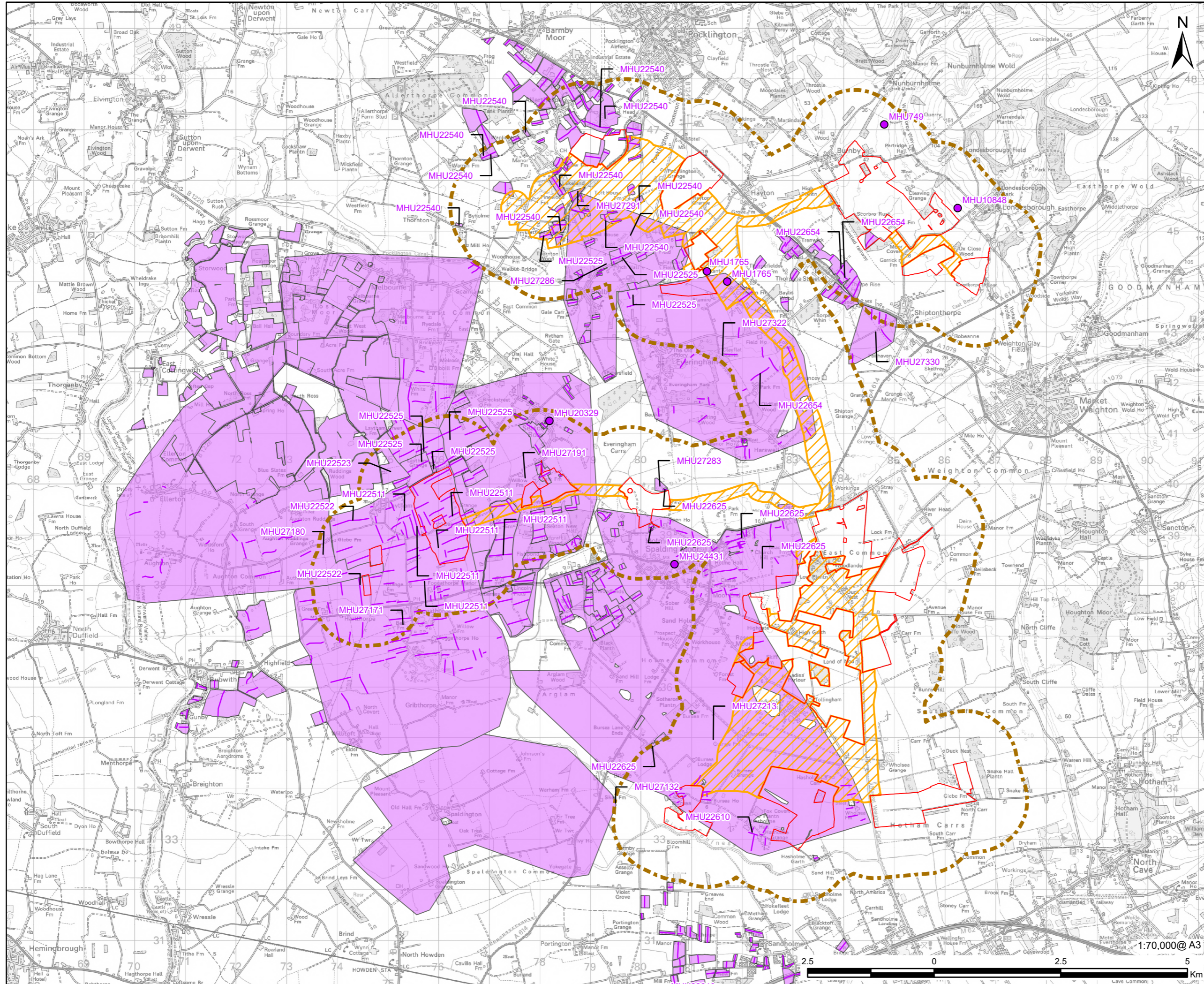


NOTES
Reproduced from Ordnance Survey digital map data © Crown copyright 2026. All rights reserved. Licence number AC000808122. HER Data are reproduced with the permission of the Humber HER. Humber Historic Environment Record Copyright ©2026.

FIGURE TITLE
Non-Designated Heritage Assets
Sheet 5 of 6

FIGURE NUMBER
Figure 10-2

This drawing has been prepared for the use of the client. It may not be used, modified, reproduced or relied upon by third parties, except as signed by or on behalf of AECOM. AECOM accepts no responsibility, and disclaims any liability, whatsoever, to any party that uses or relies on this drawing without the express written consent of AECOM. All measurements must be obtained from the stated dimensions.



This drawing has been prepared for the use of the client. It may not be used, modified, reproduced or relied upon by third parties, except as signed by or on behalf of AECOM. AECOM accepts no responsibility, and denies any liability, whatsoever, to any party that uses or relies on this drawing without the express written consent of AECOM. All measurements must be obtained from the stated dimensions.



HUMBERHEAD
SOLAR