



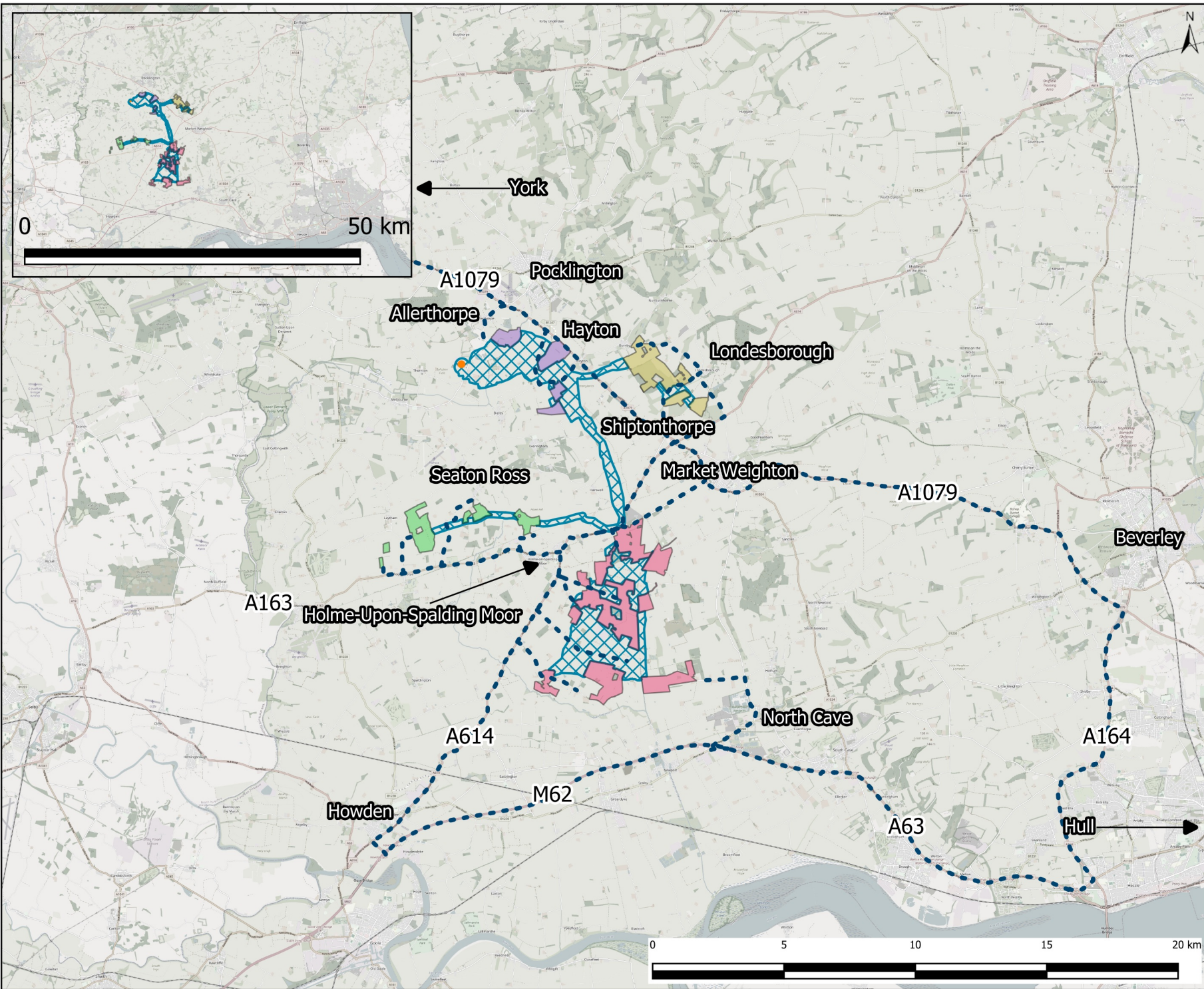
Environmental Impact Assessment Scoping Report

EN0110032

Figures Part 7: 11-1 to 14-2-2

Part 1	
Figure 1-1	Site Location and Scoping Site Boundary
Figure 1-2	Site Boundary and Land Use
Figure 3-1	Humberhead Sites Field Boundaries
Figure 3-2	Environmental Constraints
Figure 7-1	Study Area Landscape and Visual Appraisal (LVIA)
Figure 7-2	Aerial Photography
Figure 7-3	Landform
Figure 7-4	Landscape Character Areas
Part 2	
Figure 7-5	Landscape Receptors
Figure 7-6	Visual Receptors
Figure 7-7	Flood Risk
Figure 7-8	Agricultural Land Classification
Figure 7-9	Bare Earth Zone of Theoretical Visibility
Figure 7-10	Augmented Zone of Theoretical Visibility
Figure 7-11	Private Receptors
Figure 7-12	Public Receptors
Figure 7-13	Transport Receptors
Part 3	
Figure 7-14	Viewpoints
Figure 8-1	Internationally Statutory Designated Sites
Figure 8-2	National Statutory Designated Sites
Figure 8-3	SSSI Impact Risk Zone
Figure 8-4	Non-Statutory Designated Sites
Figure 8-5	Non-Breeding Bird survey plans for the Humberhead Sites - Overview
Figure 9-1	Surface Water Receptors and their Attributes
Part 4	
Figure 9-2	Ground Water Receptors and their Attributes
Figure 9-3	Fluvial Flood Risk
Figure 9-4	Surface Water Flood Risk (Sheets 1-2)
Part 5	
Figure 9-4	Surface Water Flood Risks (Sheets 3-6)
Figure 9-5	Catchment Plan for Surface Water Framework Directive (WFD) Waterbodies
Part 6	
Figure 10-1	Designated Heritage Assets
Figure 10-2	Non-Designated Heritage Assets
Part 7	
Figure 11-1	Transport Study Area
Figure 11-2	Public Rights of Way

Part 7	
Figure 12-1	Noise and Vibration Study Areas, Sensitive Receptors and Noise Monitoring Locations
Figure 14-1-1	Air Quality Monitoring Locations under the Responsibility of the Local Authority
Figure 14-1-2	Air Quality Study Area
Figure 14-2-1	Predictive Agriculture Land Classification
Figure 14-2-2	Soil Associations



Study Area

- Humberhead Site 1
- Humberhead Site 2
- Humberhead Site 3
- Humberhead Site 4
- Cable Route Search Corridor
- PoC - National Grid - Thornton Substation
- Preliminary Construction Route

NOTES

Crown copyright and database rights 2026
OSM Standard

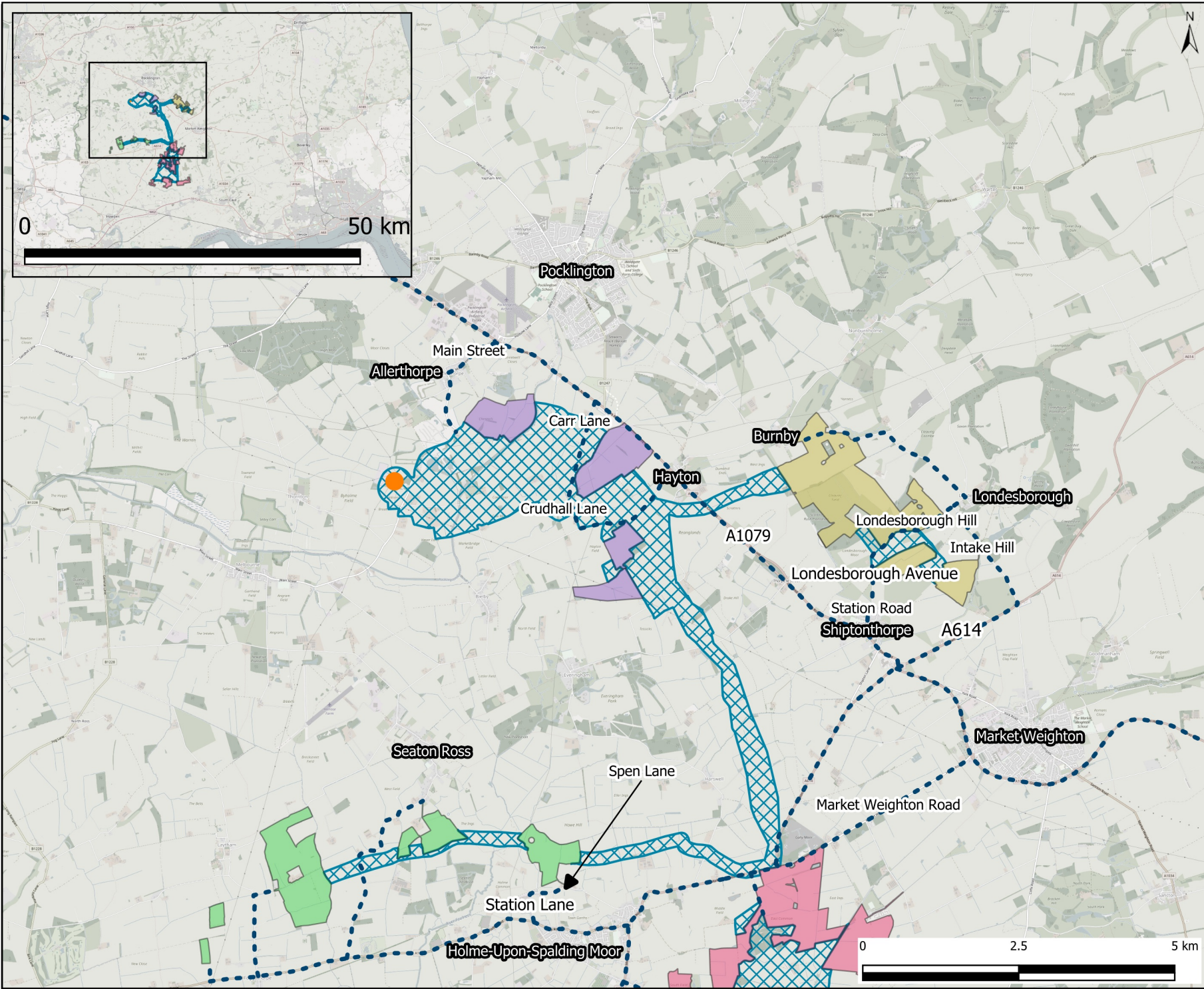
FIGURE TITLE

Study Area

FIGURE NUMBER

Figure 11-1-1

This drawing has been prepared for the use of AECOM's client. It may not be used, modified, reproduced or relied upon by third parties, except as approved by AECOM or as required by law. AECOM accepts responsibility and does not accept liability whatsoever, to any party that uses or relies on this drawing without AECOM's express written consent. Do not scale this document. All measurements must be obtained from the stated dimensions.



LEGEND

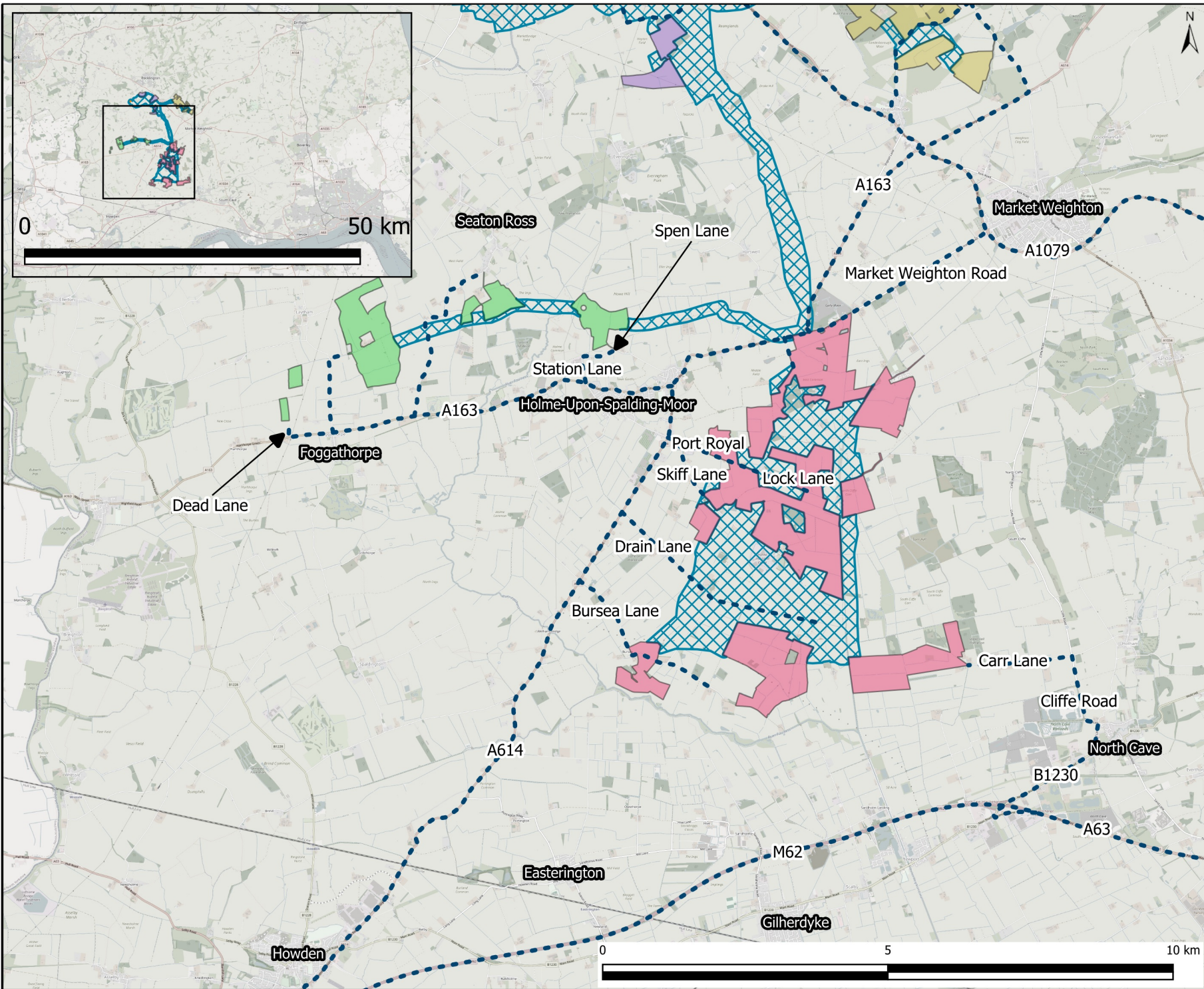
- Study Area**
- Humberhead Site 1
 - Humberhead Site 2
 - Humberhead Site 3
 - Humberhead Site 4
 - Cable Route
 - Search Corridor
 - PoC - National Grid - Thornton Substation
 - Preliminary Construction Route

NOTES
Crown copyright and database rights 2026
OSM Standard

FIGURE TITLE
Study Area

FIGURE NUMBER
Figure 11-1-2

This drawing has been prepared for the use of AECOM's client. It may not be used, modified, reproduced or relied upon by third parties, except as agreed by AECOM in writing. AECOM accepts responsibility and does not accept liability, whatsoever, to any party that uses or relies on this drawing without AECOM's express written consent. Do not scale this document. All measurements must be obtained from the stated dimensions.



LEGEND

Study Area

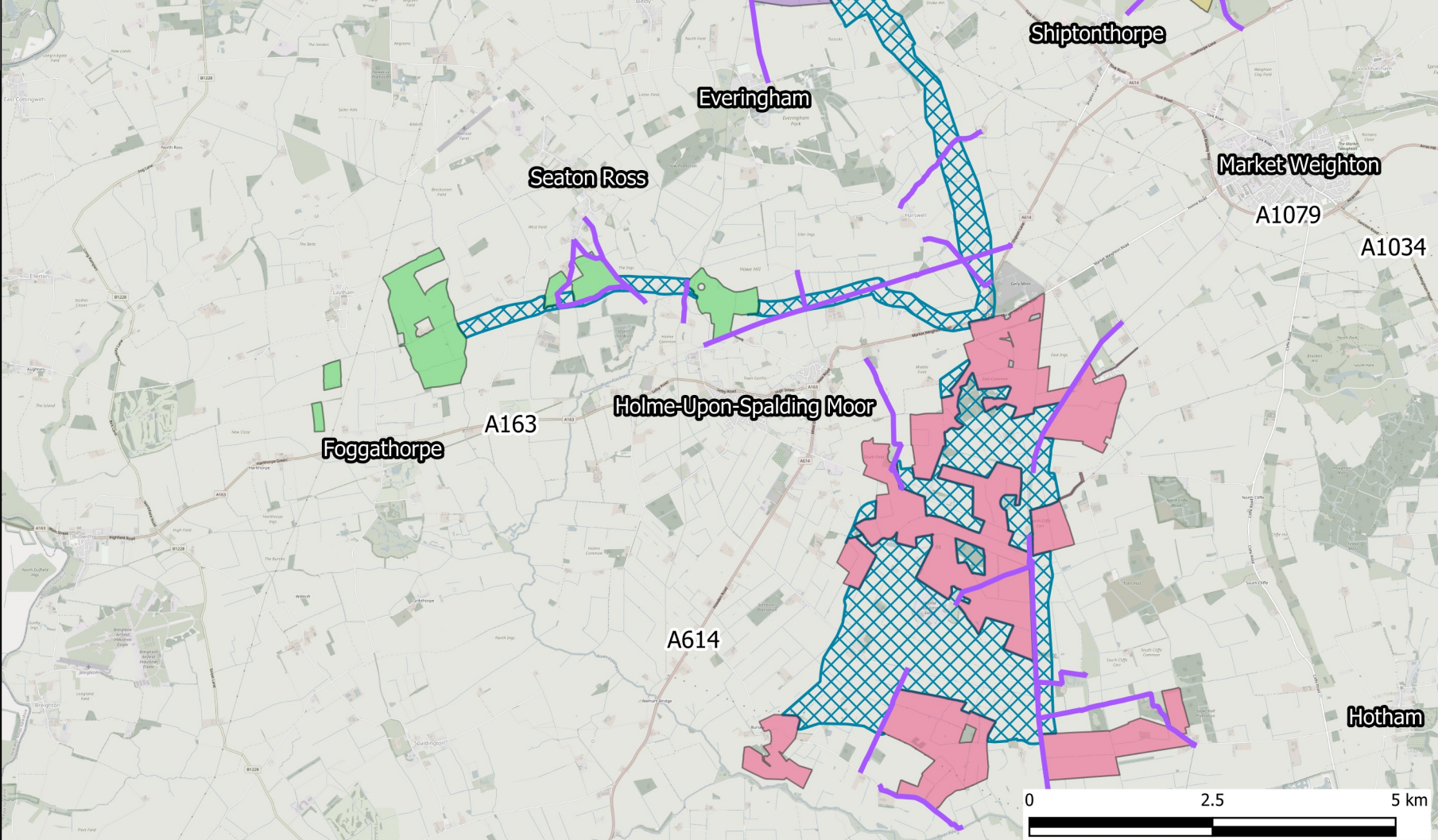
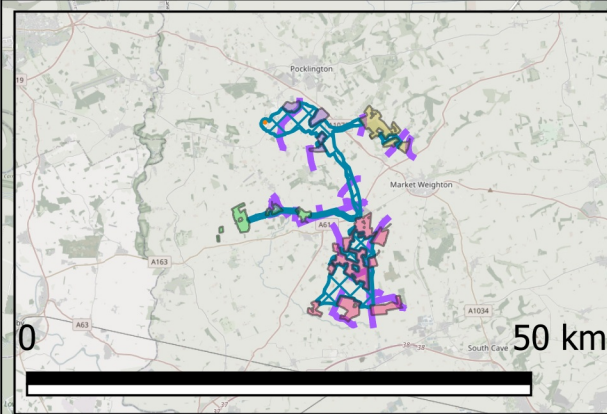
- Humberhead Site 1
- Humberhead Site 2
- Humberhead Site 3
- Humberhead Site 4
- Cable Route
- Search Corridor
- PoC - National Grid - Thornton Substation
- Preliminary Construction Route

NOTES
Crown copyright and database rights 2026 OSM Standard

FIGURE TITLE
Study Area

FIGURE NUMBER
Figure 11-1-3

This drawing has been prepared for the use of AECOM's client. It may not be used, modified, reproduced or relied upon by third parties, except as approved by AECOM or as required by law. AECOM accepts responsibility and does not accept liability whatsoever, to any party that uses or relies on this drawing without AECOM's express written consent. Do not scale this document. All measurements must be obtained from the stated dimensions.



LEGEND

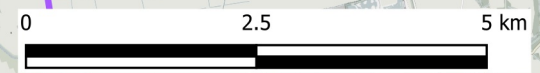
- Study Area**
- Humberhead Site 1
 - Humberhead Site 2
 - Humberhead Site 3
 - Humberhead Site 4
 - Cable Route
 - Search Corridor
 - PoC - National Grid - Thornton Substation
 - Public Rights of Way

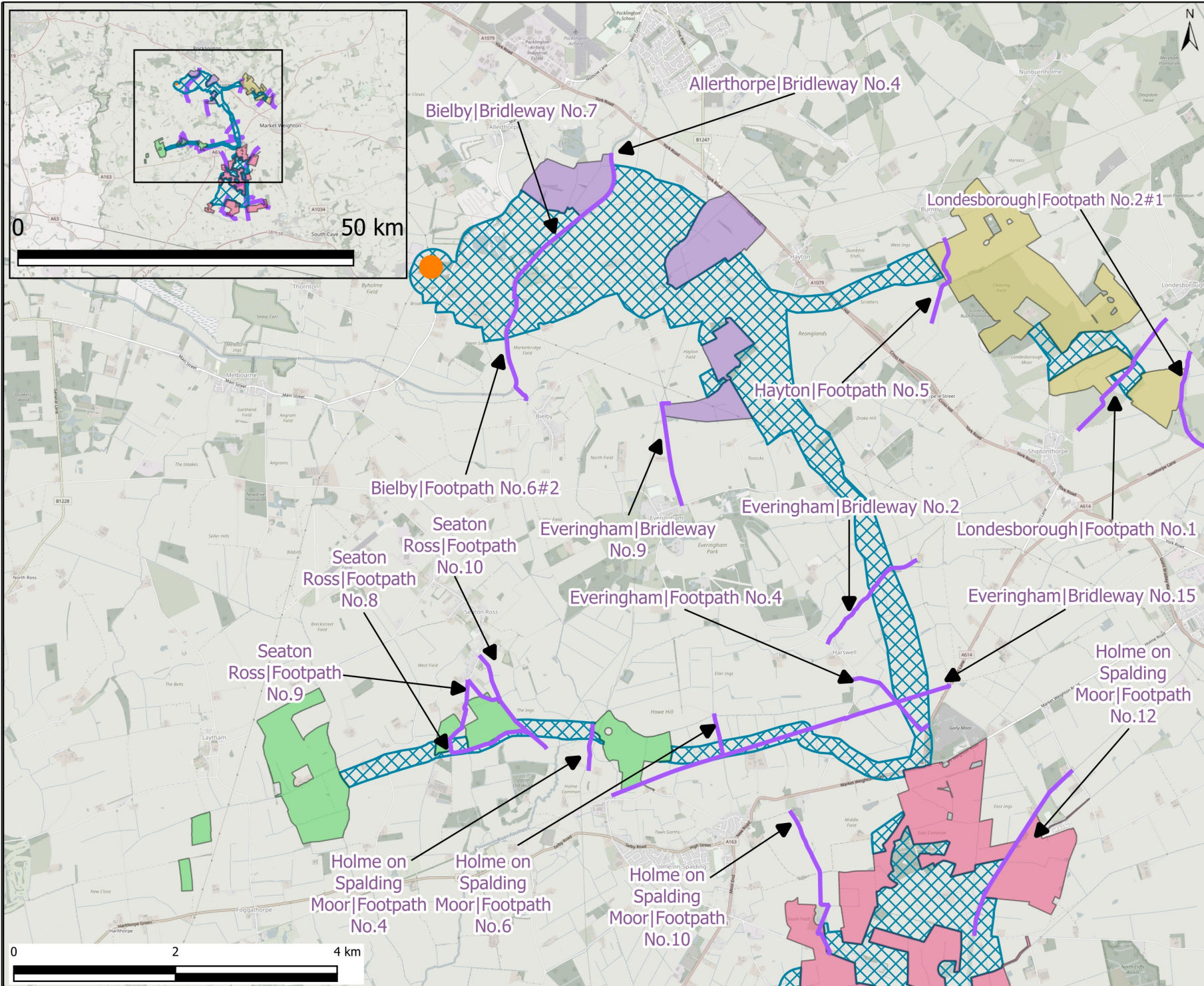
NOTES
Crown copyright and database rights 2026
OSM Standard

FIGURE TITLE
Public Rights of Way

FIGURE NUMBER
Figure 11-2-1

This drawing has been prepared for the use of AECOM's client. It may not be used, modified, reproduced or relied upon by third parties, except as agreed by AECOM in writing. AECOM accepts responsibility and does not accept liability whatsoever, to any party that uses or relies on this drawing without AECOM's express written consent. Do not scale this document. All measurements must be obtained from the stated dimensions.





LEGEND

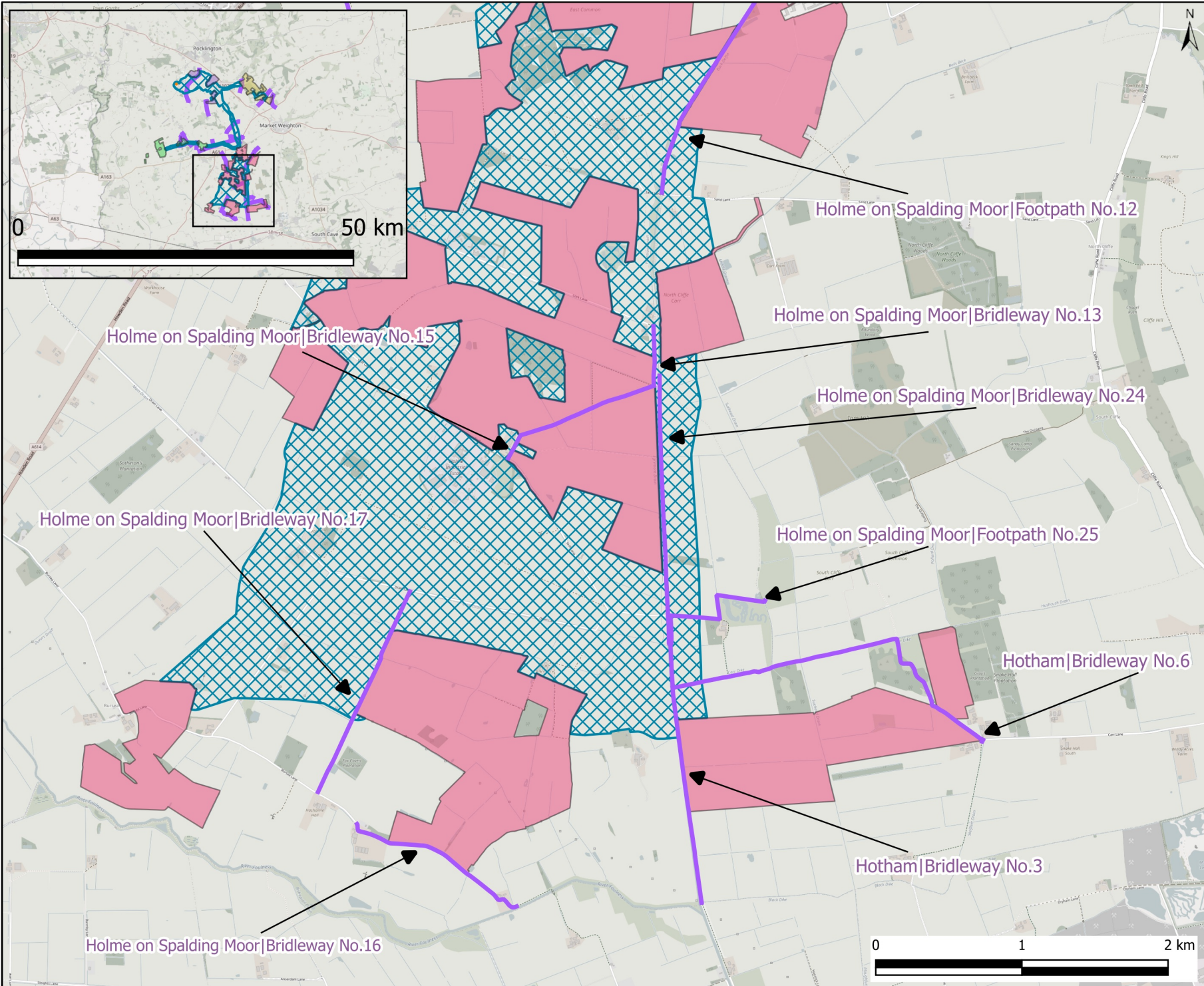
- Study Area**
- Humberhead Site 1
 - Humberhead Site 2
 - Humberhead Site 3
 - Humberhead Site 4
 - Cable Route
 - Search Corridor
 - PoC - National Grid - Thornton Substation
- Public Rights of Way**
- Public Rights of Way

NOTES
Crown copyright and database rights 2026 OSM Standard

FIGURE TITLE
Public Rights of Way

FIGURE NUMBER
Figure 11-2-2

This drawing has been prepared for the use of AECOM's client. It may not be used, modified, reproduced or relied upon by third parties, except as agreed by AECOM in writing. AECOM accepts responsibility and does not accept liability whatsoever to any party that uses or relies on this drawing without AECOM's express written consent. Do not scale this document. All measurements must be obtained from the stated dimensions.



Study Area

- Humberhead Site 1
- Humberhead Site 2
- Humberhead Site 3
- Humberhead Site 4
- Cable Route Search Corridor
- PoC - National Grid - Thornton Substation

Public Rights of Way

- Public Rights of Way

NOTES

Crown copyright and database rights 2026 OSM Standard

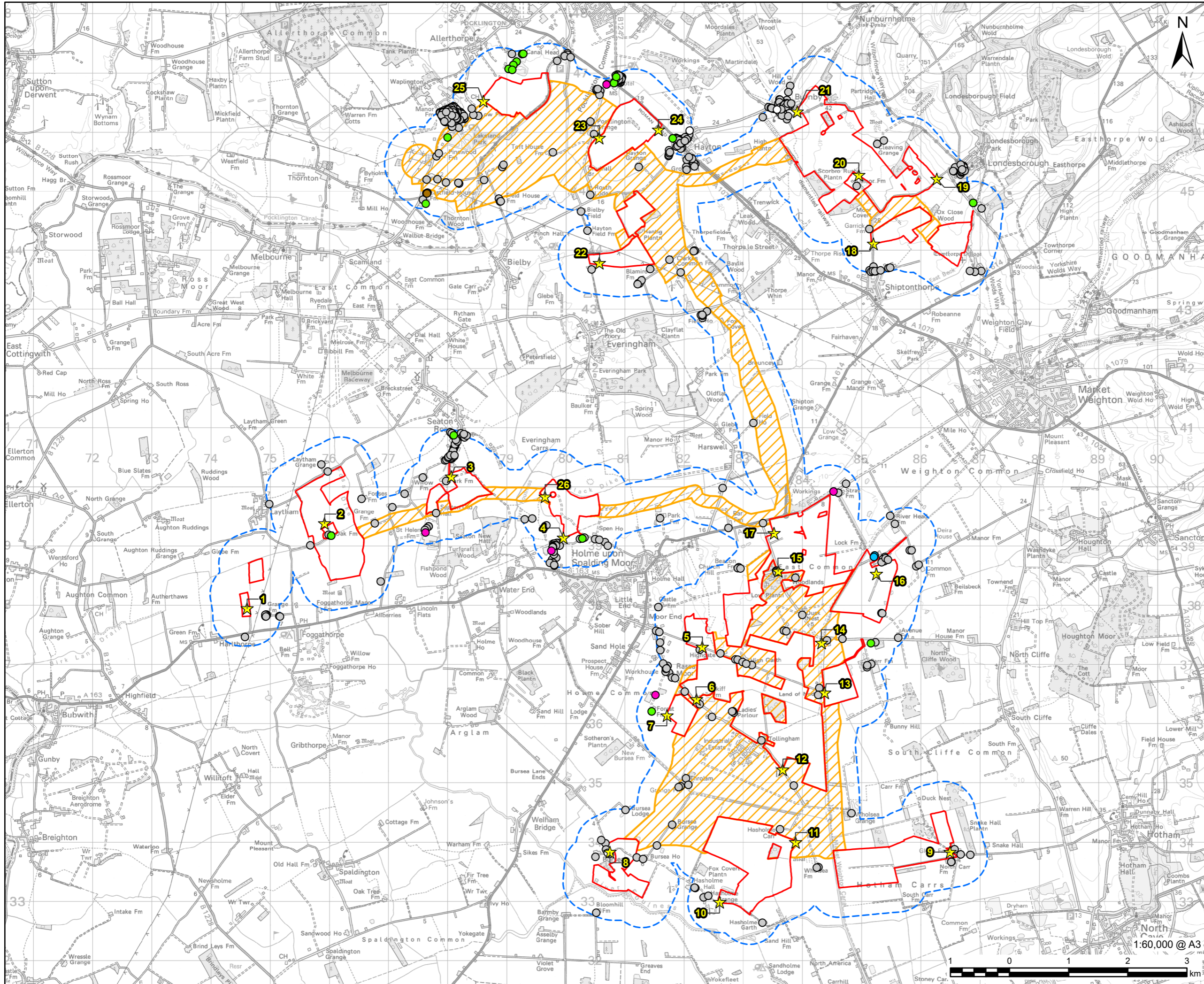
FIGURE TITLE

Public Rights of Way

FIGURE NUMBER

Figure 11-2-3

This drawing has been prepared for the use of ACCOM's client. It may not be used, modified, reproduced or relied upon by third parties, except as agreed by law. ACCOM accepts responsibility and does not accept liability whatsoever, to any party that uses or relies on this drawing without ACCOM's express written consent. Do not scale this document. All measurements must be obtained from the stated dimensions.



LEGEND

Scoping Site Boundary

- Humberhead Sites
- Cable Route Search Corridor
- Noise and Vibration Study Area (500m Buffer of the Humberhead Sites and 300m Buffer of the Cable Route Search Corridor)
- ★ Monitoring Location

Receptors

- Campsite
- Care Home
- Hotel & Guest House
- Office
- Place of Worship
- Residential

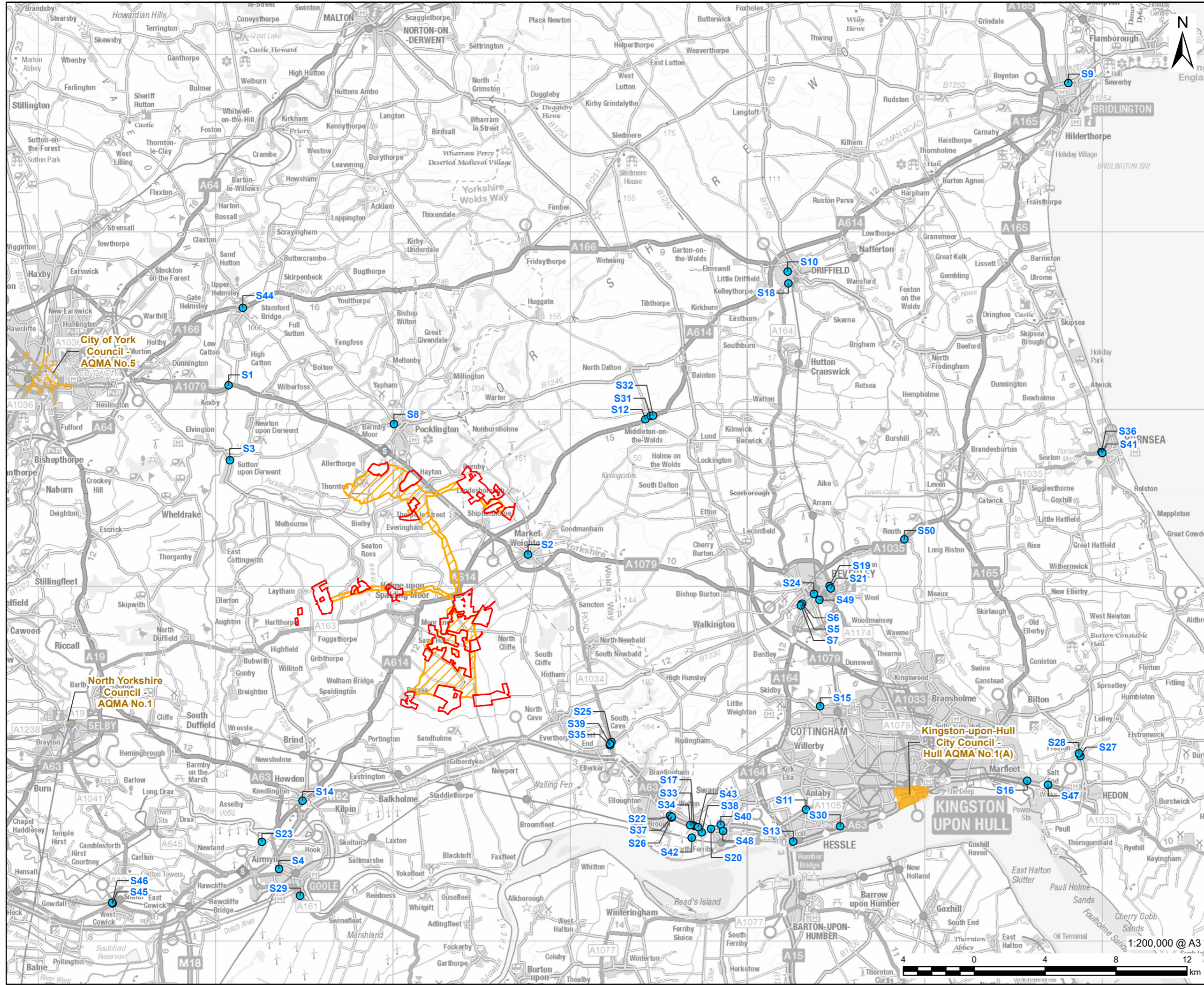
NOTES

© Crown copyright and database rights 2026
 Ordnance Survey AC0000808122. © Local Government Information House Limited copyright and database rights 2026 AC0000808122.

FIGURE TITLE
 Noise and Vibration Study Areas, Sensitive Receptors and Noise Monitoring Locations

FIGURE NUMBER
 Figure 12-1

This drawing has been prepared for the use of AECOM's client. It may not be used, modified, reproduced or relied upon by third parties, except as agreed by AECOM or as required by law. AECOM accepts no responsibility, and denies any liability whatsoever, to any party that uses or relies on this drawing without AECOM's express written consent. Do not scale this document. All measurements must be obtained from the stated dimensions.



PROJECT



CLIENT







CONSULTANT

AECOM Limited
3 Rivergate
Bristol, BS1 6EW
www.aecom.com

LEGEND

Scoping Site Boundary

-  Humberhead Sites
-  Cable Route Search Corridor
-  Air Quality Monitoring Location
-  Air Quality Management Area (AQMA)

NOTES

© Crown copyright and database rights 2026
 Ordnance Survey AC0000808122. Contains OS data © Crown copyright 2025.
 © Crown 2026 copyright and database rights 2026 licensed under Defra's Public Sector Mapping Agreement with Ordnance Survey (licence No. 100022861). Air Quality Monitoring Locations taken from East Riding of Yorkshire Council's 2025 Air Quality Annual Status Report (ASR), published June 2025.

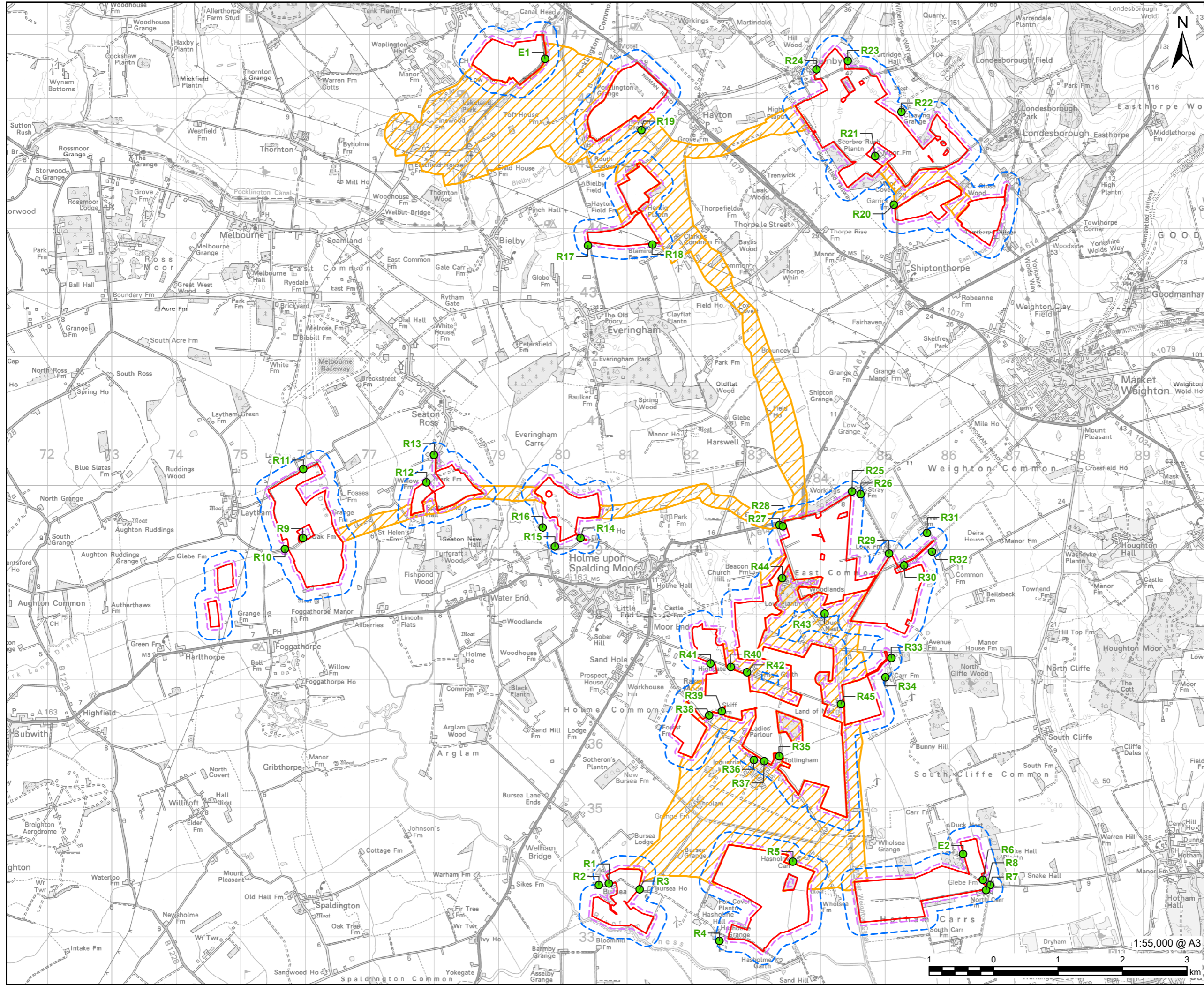
FIGURE TITLE

Air Quality Monitoring Locations under the Responsibility of the Local Authority

FIGURE NUMBER

Figure 14-1-1

This drawing has been prepared for the use of AECOM's client. It may not be used, modified, reproduced or relied upon by third parties, except as agreed by AECOM or as required by law. AECOM accepts no responsibility, and denies any liability whatsoever, to any party that uses or relies on this drawing without AECOM's express written consent. Do not scale this document. All measurements must be obtained from the stated dimensions.



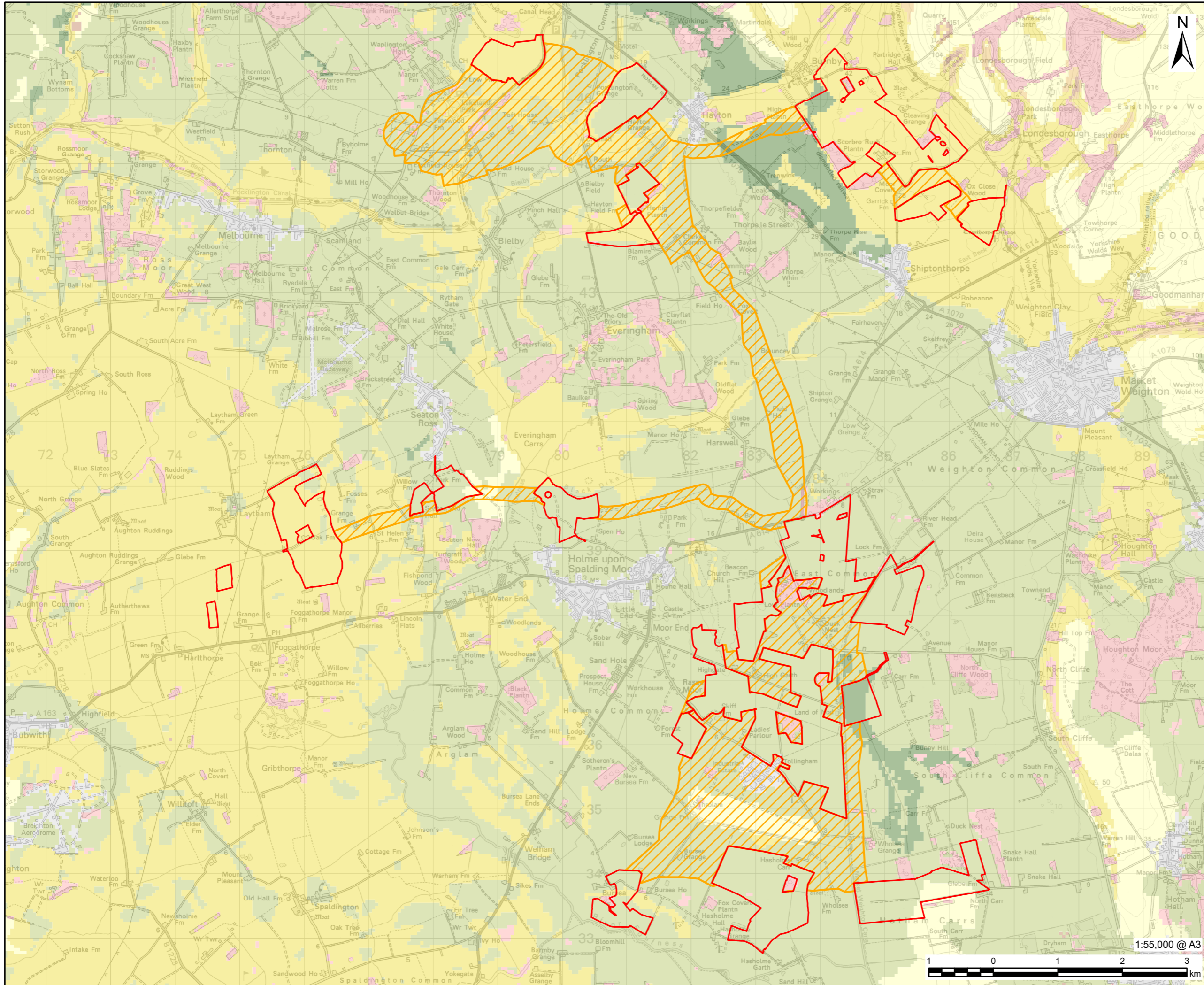
- Scoping Site Boundary**
- Humberhead Sites
 - Cable Route Search Corridor
 - 50m Buffer of the Humberhead Sites
 - 200m Buffer of the Humberhead Sites
 - Representative Receptor

© Crown copyright and database rights 2026
Ordnance Survey AC0000808122.

Study Area

Figure 14-1-2

This drawing has been prepared for the use of AECOM's client. It may not be used, modified, reproduced or relied upon by third parties, except as signed by AECOM or as required by law. AECOM accepts no responsibility, and denies any liability whatsoever, to any party that uses or relies on this drawing without AECOM's express written consent. Do not scale this document. All measurements must be obtained from the stated dimensions.



PROJECT



CLIENT



CONSULTANT

AECOM Limited
3 Rivergate
Bristol, BS1 6EW
www.aecom.com

LEGEND

Scoping Site Boundary

- Humberhead Sites
- Cable Route Search Corridor

Predictive Agricultural Land Classification (ALC)

- Grade 1
- Grade 2
- Grade 3a
- Grade 3b
- Grade 4
- Grade 5
- Non Agricultural
- Urban

NOTES

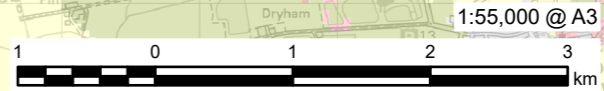
© Crown copyright and database rights 2026
Ordnance Survey AC0000808122.
© Natural England copyright. Contains
Ordnance Survey data © Crown copyright
and database right 2026.

FIGURE TITLE

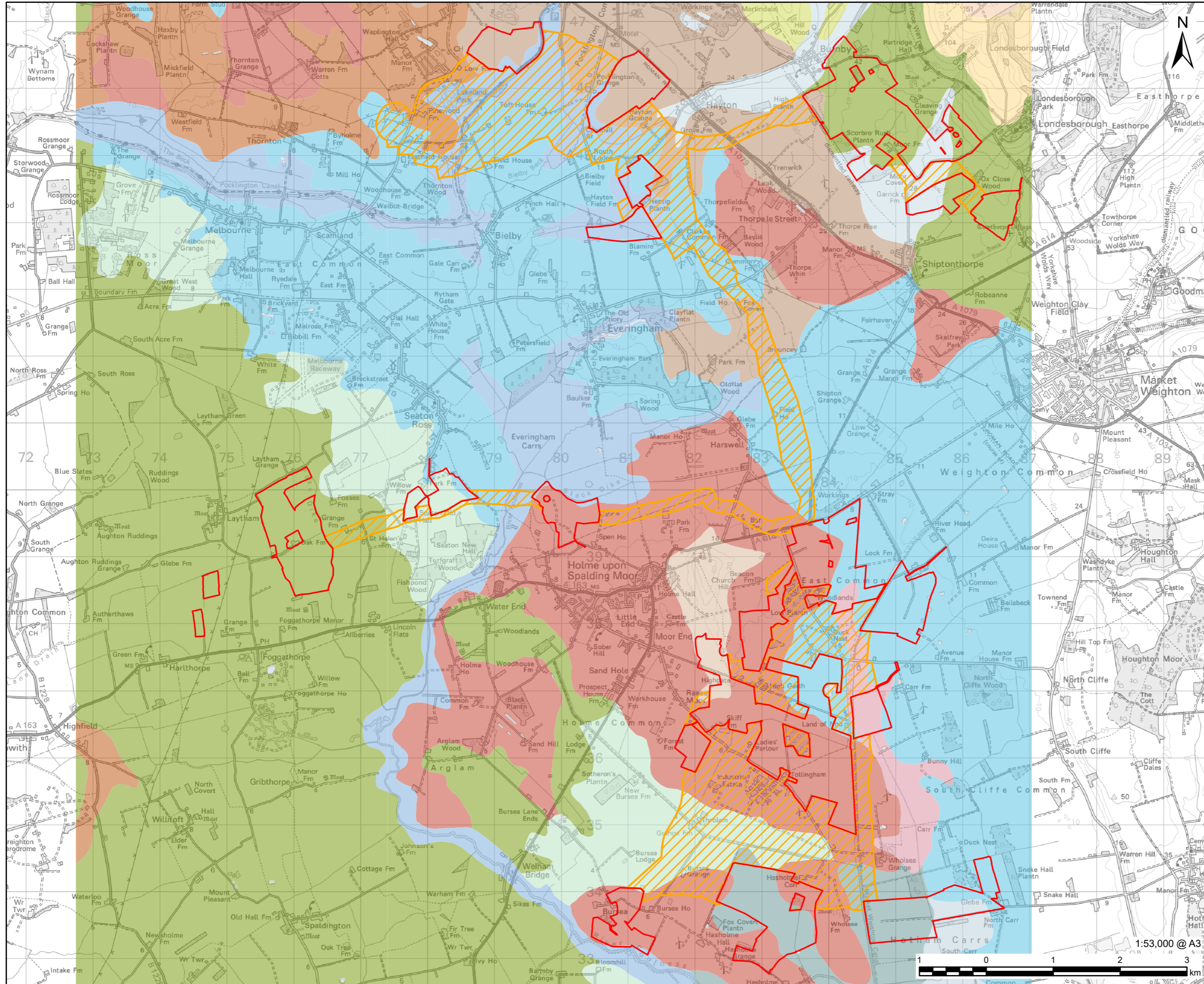
Predictive Agriculture Land
Classification

FIGURE NUMBER

Figure 14-2-1



This drawing has been prepared for the use of AECOM's client. It may not be used, modified, reproduced or relied upon by third parties, except as agreed by AECOM or as required by law. AECOM accepts no responsibility, and denies any liability whatsoever, to any party that uses or relies on this drawing without AECOM's express written consent. Do not scale this document. All measurements must be obtained from the stated dimensions.



Scoping Site Boundary

- Humberhead Sites
- Cable Route Search Corridor

National Soil Map

- ADVENTURERS' 1 (1024a)
- ANDOVER 1 (343h)
- PANHOLES (511c)
- LANDBEACH (512b)
- KEXBY (552a)
- DUNNINGTON HEATH (572g)
- HOLME MOOR (641c)
- BROCKHURST 2 (711c)
- DENCHWORTH (712b)
- FOGGATHORPE 2 (712i)
- FROME (812a)
- FLADBURY 3 (813d)
- NEWCHURCH 2 (814c)
- EVERINGHAM (821a)
- BLACKWOOD (821b)
- SESSAY (831b)
- Isleham 2 (861b)
- Lake

NOTES

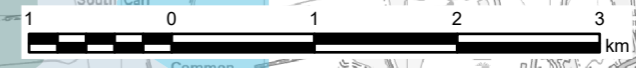
© Crown copyright and database rights 2026
 Ordnance Survey AC0000808122.
 Soils Data © Cranfield University (NSRI) and
 for the Controller of HMSO 2026. Data
 Coverage limited to the immediate Scoping
 Site Boundary.

FIGURE TITLE

Soil Associations

FIGURE NUMBER

Figure 14-2-2



This drawing has been prepared for the use of AECOM's client. It may not be used, modified, reproduced or relied upon by third parties, except as agreed by AECOM or as required by law. AECOM accepts no responsibility, and denies any liability whatsoever, to any party that uses or relies on this drawing without AECOM's express written consent. Do not scale this document. All measurements must be obtained from the stated dimensions.



HUMBERHEAD
SOLAR