



**The Great Grid Upgrade**

Sea Link

# Sea Link

**Volume 9: Examination Submissions**

**Document 9.48: River Fromus Visualisations Part 2 of 3**

**Planning Inspectorate Reference: EN20026**

**Version: A**  
**November 2025**

**nationalgrid**

**Page intentionally blank**

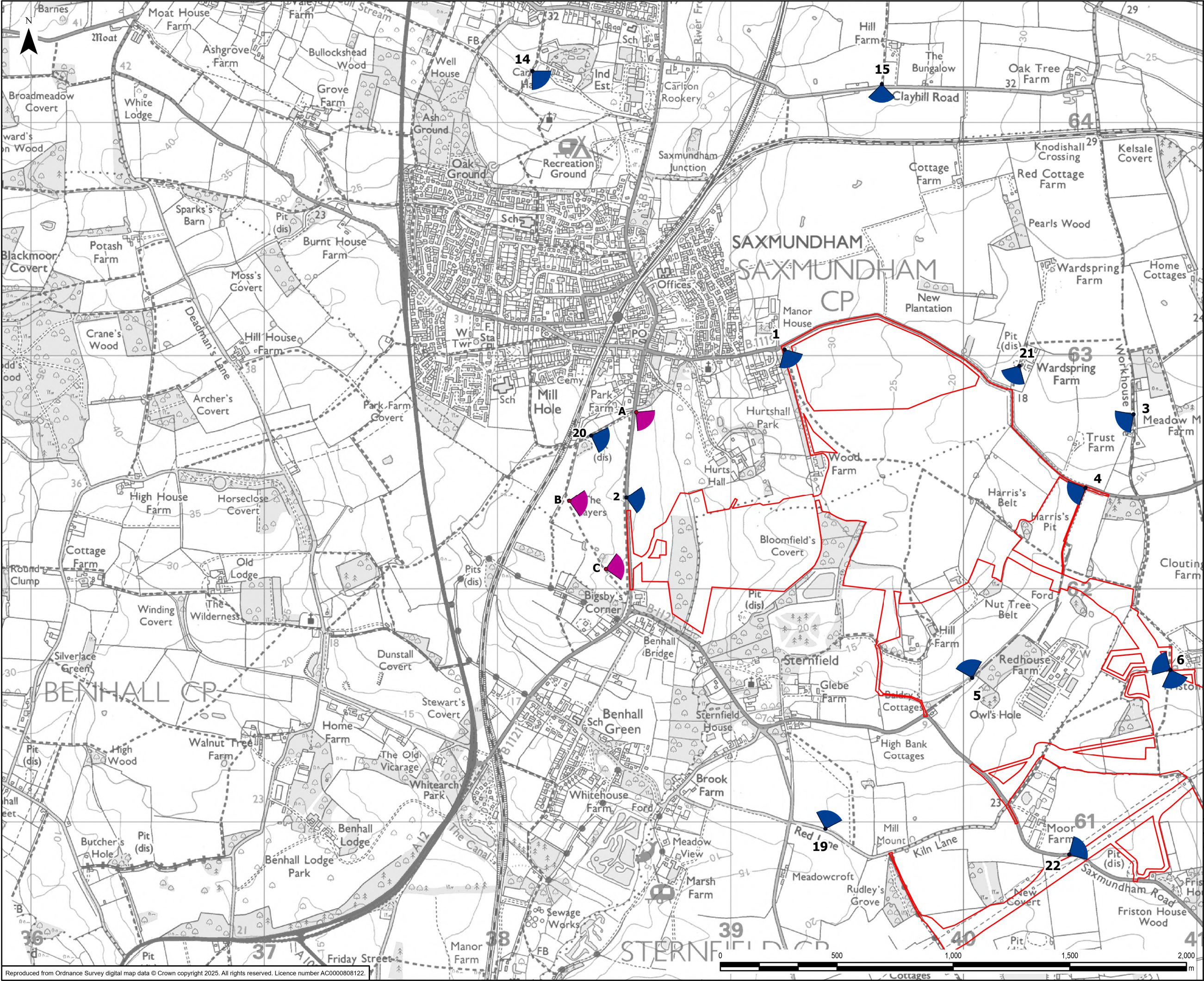


# Contents

1.	Introduction	1
2.	Additional Visualisations	2
3.	Additional Visualisation Conclusions	4
4.	River Fromus Bridge Model Assumptions	5
<b>Appendix A Additional Visualisations - Part 2</b>		<b>A.1</b>
<b>Appendix B River Fromus Bridge Model Comparative Images</b>		<b>B.1</b>
Table 2.1 Additional Visualisations		2
Table 4.2 River Fromus bridge model comparative images		5
Table 4.3 River Fromus bridge model update 2025		6

# Appendix A Additional Visualisations





Legend

Order Limits

Additional Viewpoints (Post DCO Submission)

Representative Viewpoint (DCO)

Type 1 and Type 3

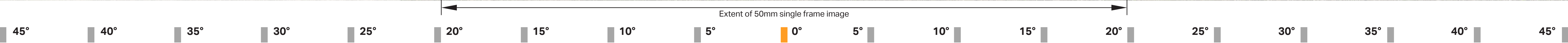
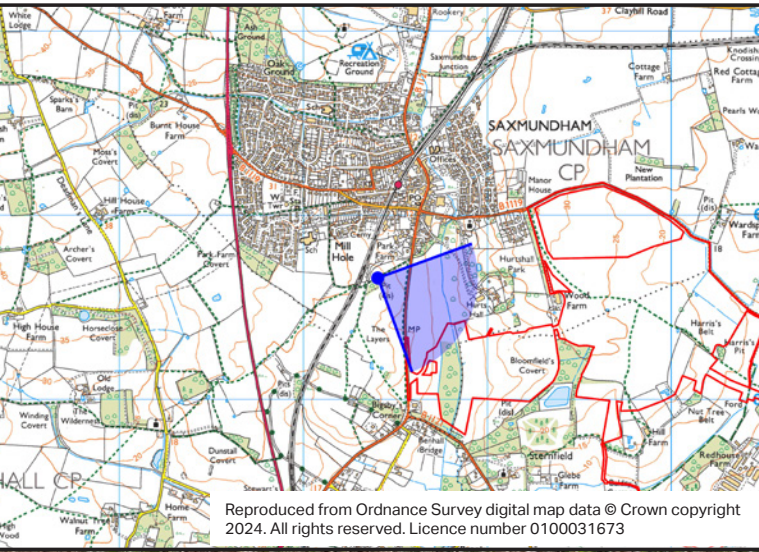
0	27/08/2025	ADDITIONAL RIVER FROMUS VIEWPOINTS	EB	DF	CW
Rev	Date	Description	GIS	Chk	App
nationalgrid					
Scheme: SEA LINK					
Document Title: LOCATION PLAN FOR ADDITIONAL RIVER FROMUS VIEWPOINTS A, B AND C					
Creator: EB	Date: 27/08/2025	Checker: DF	Date: 27/08/2025	Approver: CW	Date: 27/08/2025
Document Ref: -	Scale: 1:15,000	Format: A3	Sheets: 1	Rev: 0	



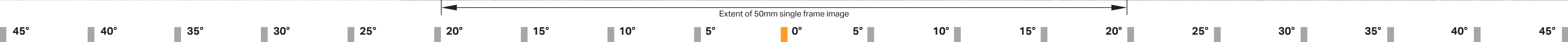


BASELINE (SUMMER)

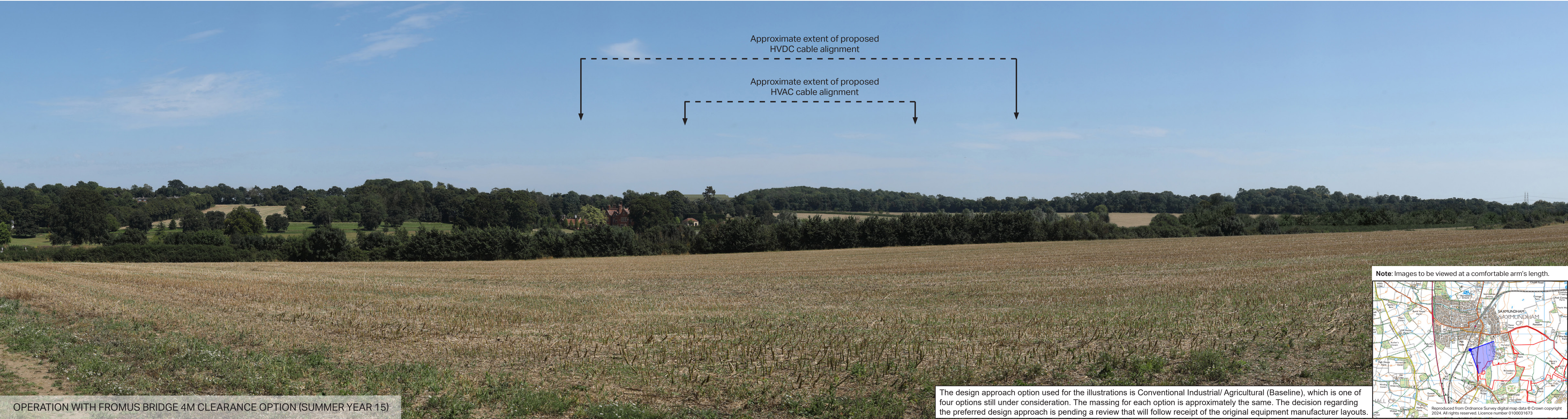
Note: Images to be viewed at a comfortable arm's length.









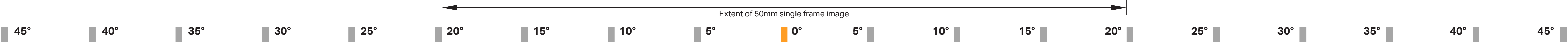


OPERATION WITH FROMUS BRIDGE 4M CLEARANCE OPTION (SUMMER YEAR 15)

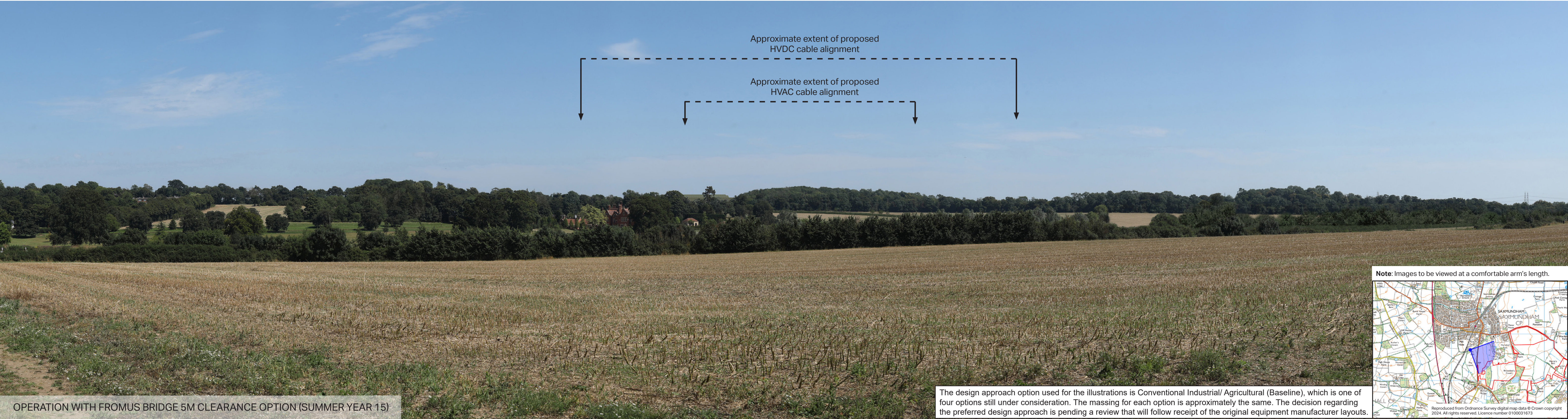
The design approach option used for the illustrations is Conventional Industrial/ Agricultural (Baseline), which is one of four options still under consideration. The massing for each option is approximately the same. The decision regarding the preferred design approach is pending a review that will follow receipt of the original equipment manufacturer layouts.

**Note:** Images to be viewed at a comfortable arm's length.

Reproduced from Ordnance Survey digital map data © Crown copyright 2024. All rights reserved. Licence number 0100031673





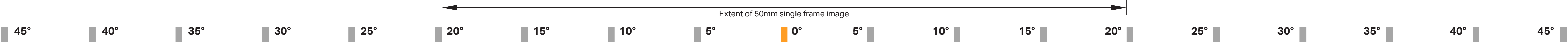


OPERATION WITH FROMUS BRIDGE 5M CLEARANCE OPTION (SUMMER YEAR 15)

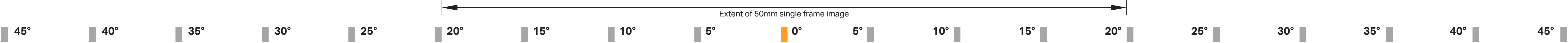
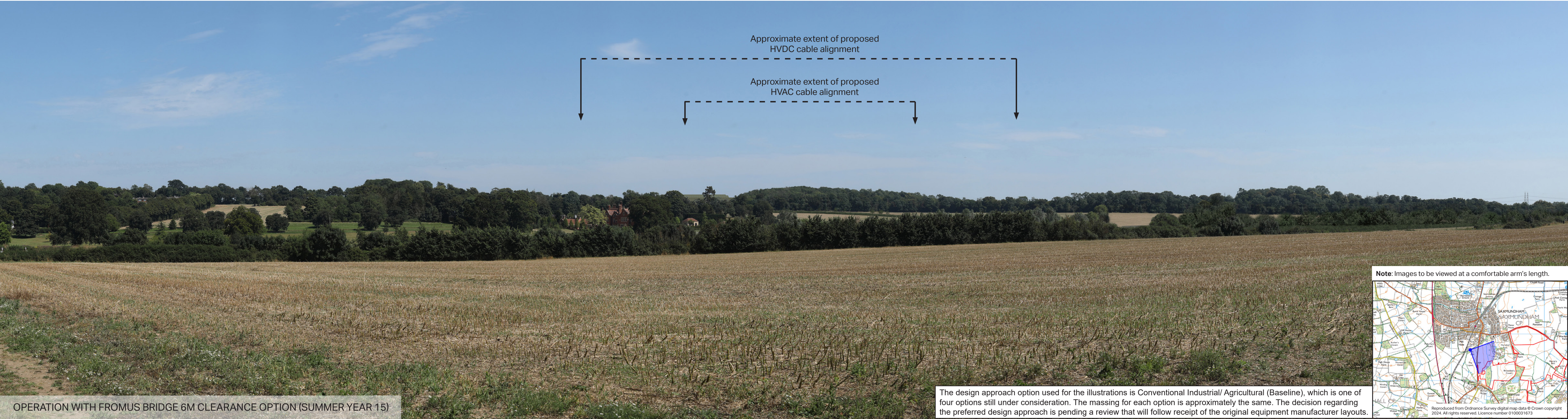
The design approach option used for the illustrations is Conventional Industrial/ Agricultural (Baseline), which is one of four options still under consideration. The massing for each option is approximately the same. The decision regarding the preferred design approach is pending a review that will follow receipt of the original equipment manufacturer layouts.

**Note:** Images to be viewed at a comfortable arm's length.

Reproduced from Ordnance Survey digital map data © Crown copyright 2024. All rights reserved. Licence number 0100031673





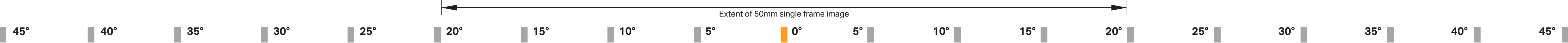
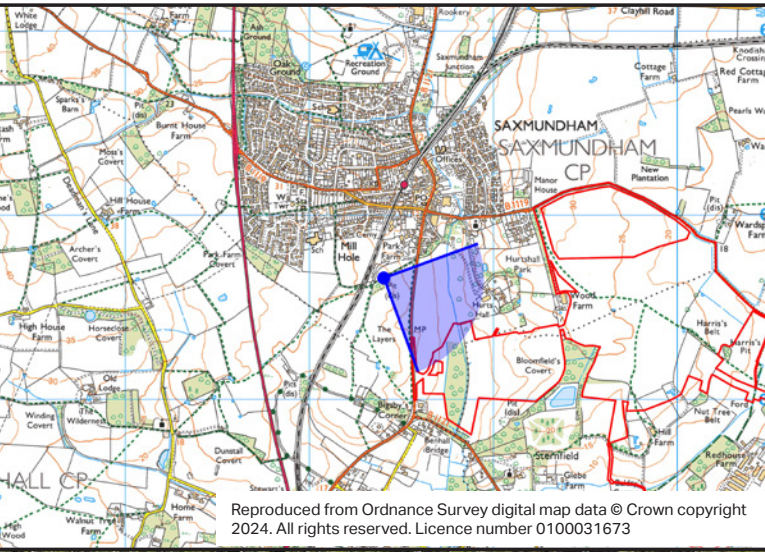






BASELINE (WINTER)

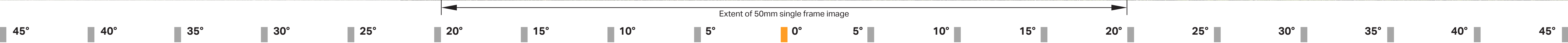
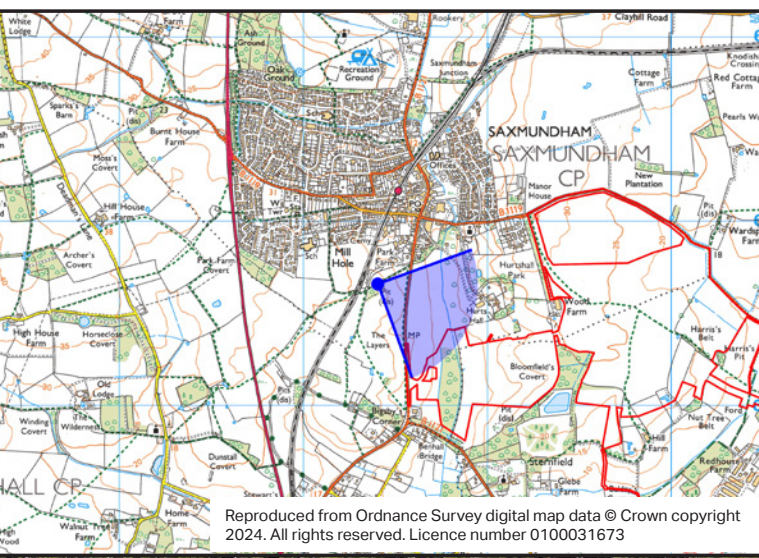
**Note:** Images to be viewed at a comfortable arm's length.







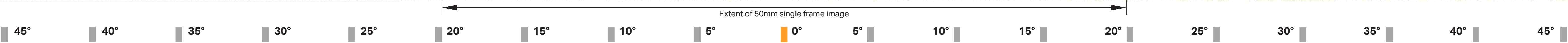
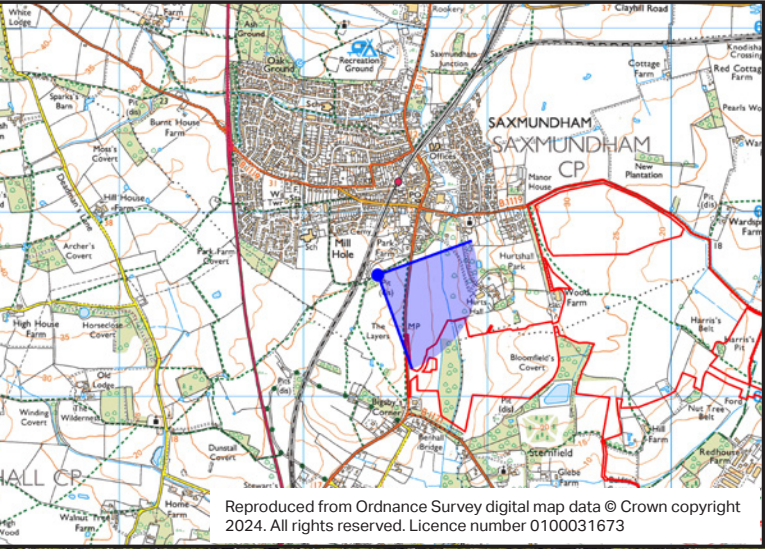
**Note:** Images to be viewed at a comfortable arm's length.







**Note:** Images to be viewed at a comfortable arm's length.



**AECOM**  
Delivering a better world

Visualisation Type: 3  
Projection: Cylindrical  
Enlargement Factor: 96%  
Paper Size: A1  
Date / Time: 03/02/2025, 12:23

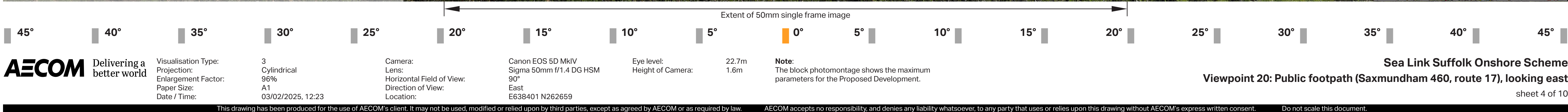
Camera:  
Lens: Sigma 50mm f/1.4 DG HSM  
Horizontal Field of View: 90°  
Direction of View: East  
Location: E638401 N262659

Eye level: 22.7m  
Height of Camera: 1.6m

**Note:**  
The block photomontage shows the maximum parameters for the Proposed Development.

**Sea Link Suffolk Onshore Scheme**  
**Viewpoint 20: Public footpath (Saxmundham 460, route 17), looking east**  
sheet 3 of 10

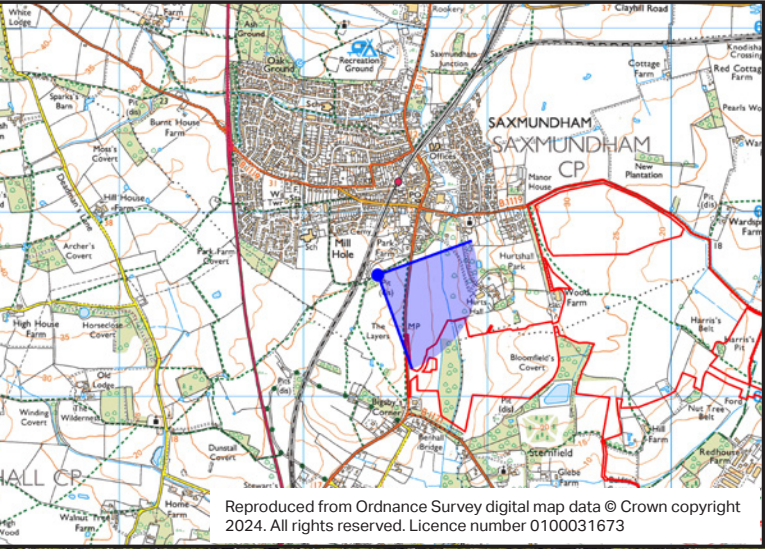








**Note:** Images to be viewed at a comfortable arm's length.



45°

40°

35°

30°

25°

20°

15°

10°

5°

0°

5°

10°

15°

20°

25°

30°

35°

40°

45°

OPERATION WITH FROMUS BRIDGE 6M CLEARANCE OPTION (WINTER YEAR 1)

Extent of 50mm single frame image

**AECOM**

Delivering a better world

Visualisation Type:

3

Projection:

Cylindrical

Enlargement Factor:

96%

Paper Size:

A1

Date / Time:

03/02/2025, 12:23

Camera:

Canon EOS 5D MkIV

Lens:

Sigma 50mm f/1.4 DG HSM

Horizontal Field of View:

90°

Direction of View:

East

Location:

E638401 N262659

Eye level:

22.7m

Height of Camera:

1.6m

**Note:**

The block photomontage shows the maximum parameters for the Proposed Development.

Sea Link Suffolk Onshore Scheme

Viewpoint 20: Public footpath (Saxmundham 460, route 17), looking east

sheet 5 of 10

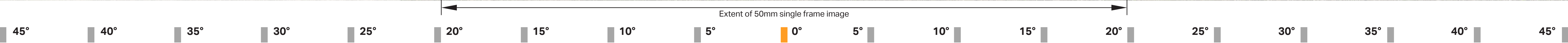
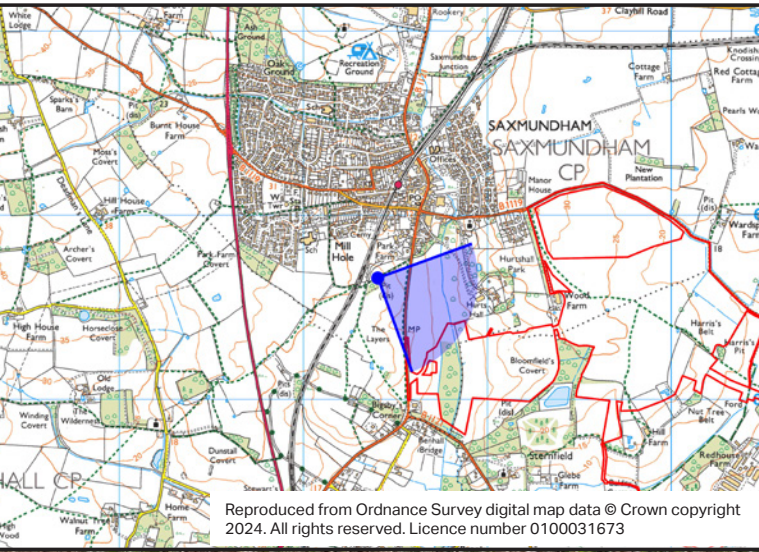
This drawing has been produced for the use of AECOM's client. It may not be used, modified or relied upon by third parties, except as agreed by AECOM or as required by law. AECOM accepts no responsibility, and denies any liability whatsoever, to any party that uses or relies upon this drawing without AECOM's express written consent. Do not scale this document.



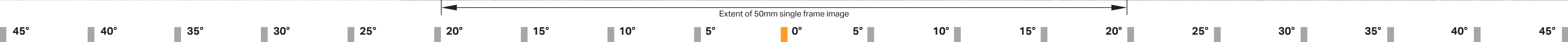


BASELINE (SUMMER)

Note: Images to be viewed at a comfortable arm's length.



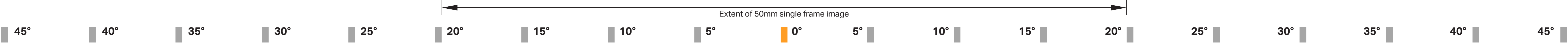
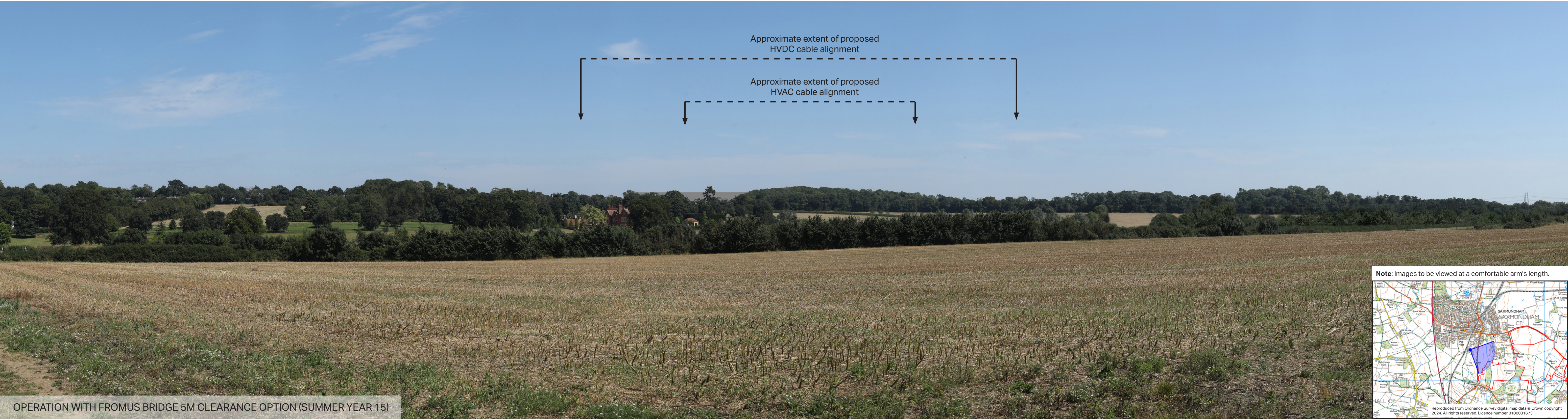






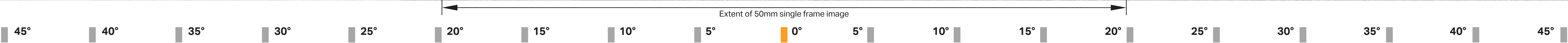
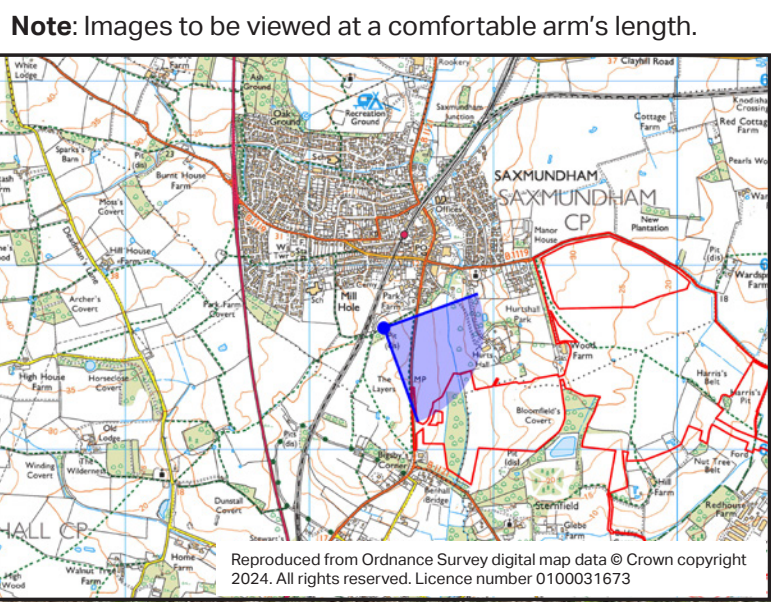
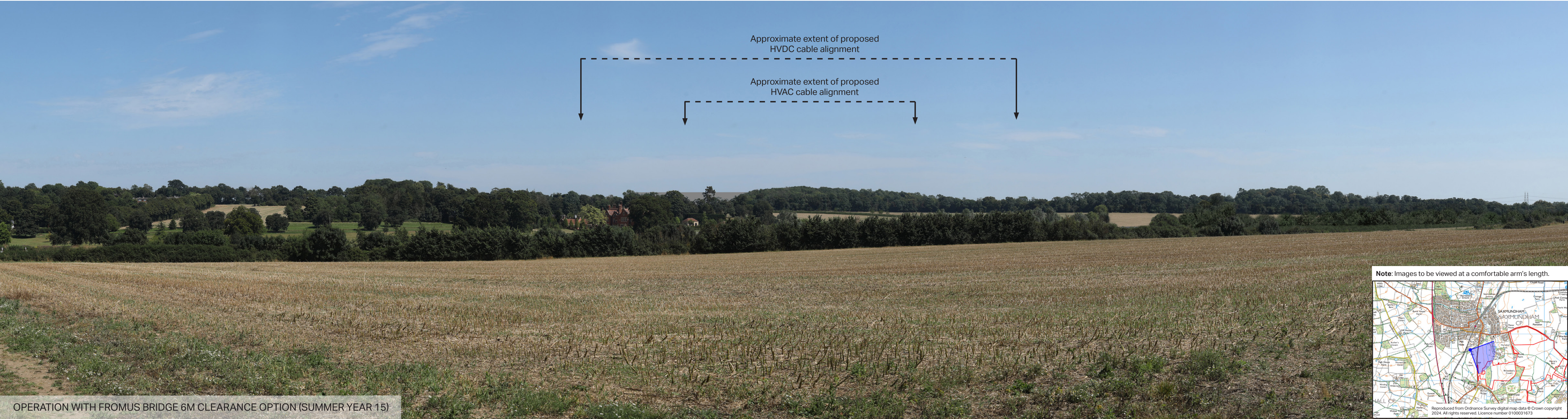






<b>AECOM</b> Delivering a better world	Visualisation Type:	3	Camera:	Canon EOS 5D MkIV	Eye level:	22.7m	<b>Note:</b> The block photomontage shows the maximum parameters for the Proposed Development.	<b>Sea Link Suffolk Onshore Scheme</b> <b>Viewpoint 20: Public footpath (Saxmundham 460, route 17), looking east</b> sheet 9 of 10
	Projection:	Cylindrical	Lens:	Sigma 50mm f/1.4 DG HSM	Height of Camera:	1.6m		
	Enlargement Factor:	96%	Horizontal Field of View:	90°				
	Paper Size:	A1	Direction of View:	East				
	Date / Time:	30/07/2024, 14:38	Location:	E638401 N262659				

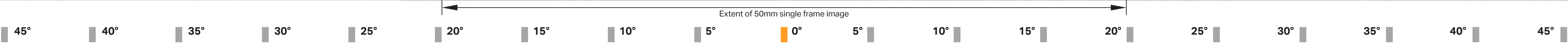








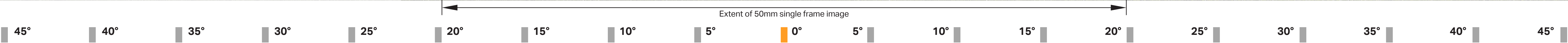
BASELINE (WINTER)







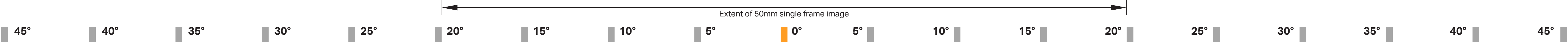
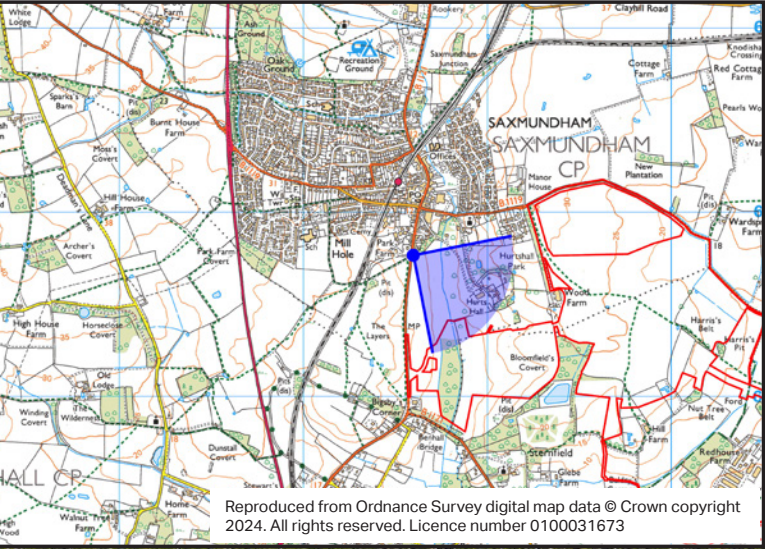
FUTURE BASELINE (PLANTATION REMOVAL) (WINTER)







**Note:** Images to be viewed at a comfortable arm's length.



<b>AECOM</b> Delivering a better world	Visualisation Type:	3	Camera:	Canon EOS 5D MkIV	Eye level:	14.3m	<b>Note:</b> The block photomontage shows the maximum parameters for the Proposed Development.
	Projection:	Cylindrical	Lens:	Sigma 50mm f/1.4 DG HSM	Height of Camera:	1.6m	
	Enlargement Factor:	96%	Horizontal Field of View:	90°			
	Paper Size:	A1	Direction of View:	South East			
	Date / Time:	03/02/2025, 12:38	Location:	E638594 N262759			

**Sea Link Suffolk Onshore Scheme**  
**Additional River Fromus Viewpoint A**

sheet 3 of 8























National Grid plc  
National Grid House,  
Warwick Technology Park,  
Gallows Hill, Warwick.  
CV34 6DA United Kingdom

Registered in England and Wales  
No. 4031152  
[nationalgrid.com](http://nationalgrid.com)