

LE1.1- Amenity Grassland

25% Perennial- Rye Grass
20% Creeping Red Fescue
30% Hard Fescue
10% Smooth Stalked Meadow Grass
10% Brown Top Bent
5% White Clover

LE1.2 - Grassland with bulbs

Galanthus nivalis- Snowdrops
Hyacinthoides non-scripta- Native English Bluebell
Narcissus pseudonarcissus - Wild Daffodil

LE2.2 - Woodland edge

60% trees and 40% shrubs
Transplants
Crataegus monogyna (S)10%
Malus sylvestris 15%
Prunus avium 15%
Prunus padus 15%
Sorbus aucuparia 10%
Salix cinerea 10%
Prunus spinosa (S) 10%
Rosa canina (S) 10%
Viburnum opulus (S) 10%
Feather trees 5%
Acer campestre 2%
Quercus robur 3%

LE2.7- Scattered Trees

Numbers to be included on detailed planting plan

Feather trees
Acer campestre
Betula pendula
Populus tremula
Prunus avium
Prunus padus
Quercus robur
Salix cinerea
Sorbus aucuparia

LE5.1- Individual Trees

Numbers to be included on the detailed planting plans

Standard Trees
Betula pendula
Populus tremula
Quercus robur
Sorbus aucuparia
Ulmus 'New Horizon'

LE1.3- Species rich grassland

Centaurea nigra- Common Knapweed
Leucanthemum vulgare- Ox-eye daisy
Lotus corniculatus- Bird's-foot trefoil
Galium verum- Lady's Bedstraw
Rumex acetosa- Common Sorrel
Lathyrus pratensis- Yellow Meadow Vetchling
Ranunculus acris- Meadow Buttercup
Plantago lanceolata- Ribwort Plantain
Primula veris- Cowslip
Hypochaeris radicata- Common Cat's Ear
Cynosurus cristatus- Crested Dog's-Tail
Briza media- Quaking Grass
Anthoxanthum odoratum- Sweet Vernal Grass
Trisetum flavescens- Yellow Oat-Grass
Festuca rubra- Red Fescue
Agrostis capillaris- Common Bent

LE2.5- Shrubs with intermittent trees

35% feathered trees and 65% shrubs
Crataegus monogyna (S) 15%
Corylus avellana (S) 15%
Crataegus monogyna (S) 15%
Ilex aquifolium (S) 10%
Rosa canina (S) 10%
Viburnum opulis (S) 15%
Feather Trees
Acer campestre 10%
Sorbus aucuparia 10%
Quercus robur 15%

LE3.4 Climbers and Trailers

Numbers to be included on the detailed planting plans

Hedera hibernica
Hedera colchica 'Sulphur Heart'
Parthenocissus quinquefolia

LE2.1 - Woodland

70% trees and 30% shrubs
Transplants
Acer campestre 25%
Betula pendula 15%
Corylus avellana(S) 5%
Crataegus monogyna (S) 5%
Ilex aquifolium (S) 5%
Populus tremula 5%
Prunus spinosa (S) 5%
Rosa canina (S) 5%
Quercus robur 20%
Viburnum opulus (S) 5%
Feather trees 5%
Acer campestre 2%
Quercus robur 3%

LE2.6- Shrubs

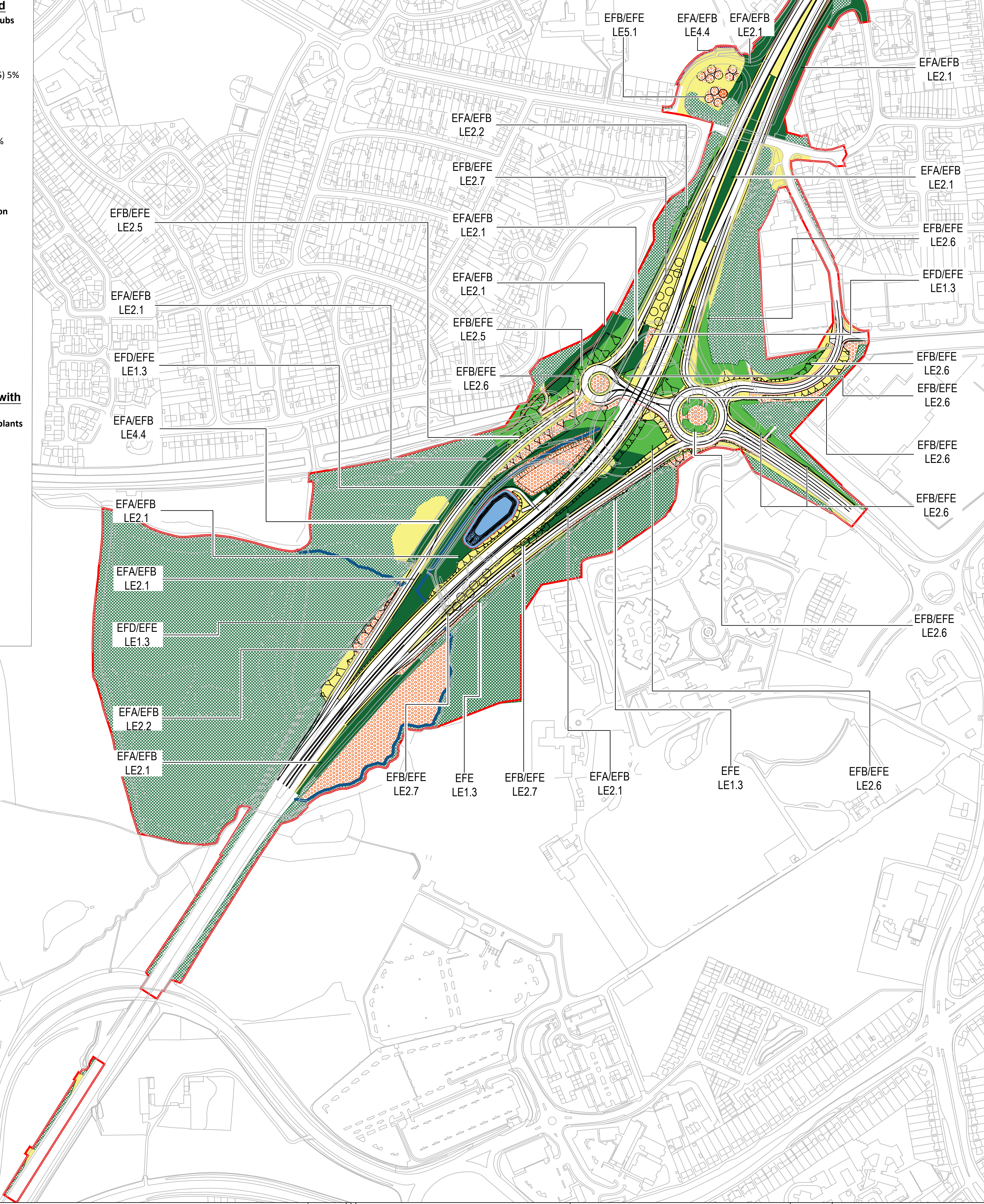
Numbers to be included on detailed planting plans

Cornus sanguinea
Corylus avellana
Crataegus monogyna
Lonicera periclymenum
Rhamnus cathartica
Rosa canina

LE4.4 - Native hedgerow with trees

90% transplants and 10% feather plants

Transplants
Acer campestre 5%
Corylus avellana (S) 5%
Crataegus monogyna (S) 45%
Ilex aquifolium 5%
Prunus spinosa (S) 25%
Viburnum opulus (S) 5%
Feather trees
Prunus avium 5%
Quercus robur 5%



SAFETY, HEALTH AND ENVIRONMENTAL INFORMATION BOX

IT IS ASSUMED THAT ALL WORKS ON THIS DRAWING WILL BE CARRIED OUT BY A COMPETENT CONTRACTOR WORKING, WHERE APPROPRIATE, TO AN APPROPRIATE METHOD STATEMENT.

THIS DRAWING IS TO BE USED ONLY FOR THE PURPOSE OF ISSUE THAT IT WAS ISSUED FOR AND IS SUBJECT TO AMENDMENT.

EXCEPTIONAL RISKS RELATING TO THE WORKS ASSOCIATED WITH THIS DRAWING ARE IDENTIFIED BELOW.

CONSTRUCTION

MAINTENANCE / OPERATION / DECOMMISSIONING / DEMOLITION

- NOTES
- THIS DRAWING IS TO BE READ IN CONJUNCTION WITH ALL OTHER RELEVANT DOCUMENTATION.
 - DO NOT SCALE FROM THIS DRAWING. USE ONLY PRINTED DIMENSIONS.
 - ALL DIMENSIONS IN MILLIMETRES, ALL CHAINAGES, LEVELS AND COORDINATES ARE IN METRES UNLESS DEFINED OTHERWISE.
 - THIS DRAWING IS TO BE READ IN CONJUNCTION WITH THE PROJECT HEALTH & SAFETY FILE FOR ANY IDENTIFIED POTENTIAL RISKS.

Landscape Elements

- Amenity grassland LE1.1
- Grassland with bulbs LE1.2
- Species rich grassland LE1.3
- Woodland LE2.1
- Woodland edge LE2.2
- Linear belts of shrubs and trees LE2.4
- Shrubs with intermittent trees LE2.5
- Shrubs LE2.6
- Native Trees- Scattered trees LE2.7
- Individual trees LE5.1
- Water bodies and associated plants LE6.1
- Banks and ditches LE6.2
- Native hedgerows with trees LE4.4
- Vegetation to be retained
- Water bodies

Environmental functions-

- EFA- Visual screening
- EFB- Landscape integration
- EFC- Enhancing the built environment
- EFD- Nature conservation and biodiversity
- EFE- Visual amenity
- EFF- Heritage
- EFH- Auditory amenity
- EFH- Water quality

First Issue	KH	21/02/19	P01.1
Revision Details	By	Check	Date

DCO SUBMISSION

Client
Highways England
Floor 5
Two Colmore Square
38 Colmore Circus
Birmingham
B4 6BN



A38 DERBY JUNCTIONS

FIGURE 7.8A KINGSWAY JUNCTION LANDSCAPE DESIGN

Designed CL	Drawn KH	Checked JA	Approved SW	Date 27/03/2019
Internal Project No. 0533462			Suitability S0	
Scale @ A1 1:2500			Zone A38/A5111 Kingsway	

THIS DOCUMENT HAS BEEN PREPARED PURSUANT TO AND SUBJECT TO THE TERMS OF AECOM'S APPOINTMENT BY ITS CLIENT. AECOM ACCEPTS NO LIABILITY FOR ANY USE OF THIS DOCUMENT OTHER THAN BY ITS ORIGINAL CLIENT OR FOLLOWING AECOM'S EXPRESS AGREEMENT TO SUCH USE, AND ONLY FOR THE PURPOSES FOR WHICH IT WAS PREPARED AND PROVIDED.

AECOM
Royal Court
Basil Close, Chesterfield
Derbyshire. S41 7SL
Tel01246 209221
Fax01246 209229
www.aecom.com



AECOM Infrastructure & Environment UK Limited
Registered in England Registered number: 880328
Registered office: Scott House, Alencon Link,
Bangor, Hampshire RG21 7PF

Drawing Number Highways England PIN HE514503	1 Originator -ACM	1 Volume -ELS -	Rev P01.1
Z1_ZZ_ZZ_ZZ	-M2-LV-0001	1 Type 1 Role 1 Number	

25% Perennial- Rye Grass
20% Creeping Red Fescue
30% Hard Fescue
10% Smooth Stalked Meadow
Grass
10% Brown Top Bent
5% White Clover

Galanthus nivalis- Snowdrops
Hyacinthoides non-scripta- Native English
Bluebell
Narcissus pseudonarcissus - Wild Daffodil

Centaurea nigra- Common Knapweed
 Leucanthemum vulgare- Ox-eye daisy
 Lotus corniculatus- Bird's-foot trefoil
 Galium verum- Lady's Bedstraw
 Rumex acetosa- Common Sorrel
 Lathyrus pratensis- Yellow Meadow Vetchling
 Ranunculus acris- Meadow Buttercup
 Plantago lanceolata- Ribwort Plantain
 Primula veris- Cowslip
 Hypochaeris radicata- Common Cat's Ear
 Cynosurus cristatus- Crested Dog's-Tail
 Briza media- Quaking Grass
 Anthoxanthum odoratum- Sweet Vernal Grass
 Trisetum flavescens- Yellow Oat-Grass
 Festuca rubra- Red Fescue
 Agrostis capillaris- Common Bent

70% trees and 30% shrubs

Transplants

Acer campestre	25%
Betula pendula	15%
Corylus avellana(S)	5%
Crataegus monogyna (S)	5%
Ilex aquifolium (S)	5%
Populus tremula	5%
Prunus spinosa (S)	5%
Rosa canina (S)	5%
Quercus robur	20%
Viburnum opulus (S)	5%
Feather trees	5%
Acer campestre	2%
Quercus robur	3%

60% trees and 40% shrubs

Transplants

<i>Crataegus monogyna</i> (S)	10%
<i>Malus sylvestris</i>	15%
<i>Prunus avium</i>	15%
<i>Prunus padus</i>	5%
<i>Sorbus aucuparia</i>	10%
<i>Salix cinerea</i>	10%
<i>Prunus spinosa</i> (S)	10%
<i>Rosa canina</i> (S)	10%
<i>Viburnum opulus</i> (S)	10%
Feather trees	5%
<i>Acer campestre</i>	2%
<i>Quercus robur</i>	3%

Numbers to be included on detailed

planting plans
Cornus sanguinea
Corylus avellana
Crataegus monogyna
Lonicera periclymenum
Rhamnus cathartica
Rosa canina

Numbers to be included on detailed planting plans

Achillea millefolium
Cornus sanguinea
Corylus avellana
Crataegus monogyna
Echinacea purpurea
Hypericum hidcote
Lonicera periclymenum
Rhamnus cathartica
Rosa canina
Scabiosa 'Kudo Pink'
Verbena bonariensis

Numbers to be included on detailed planting plan

Feather trees
Acer campestre
Betula pendula
Populus tremula
Prunus avium
Prunus padus
Quercus robur
Salix cinerea
Sorbus aucuparia

Numbers to be included on the detailed planting plans

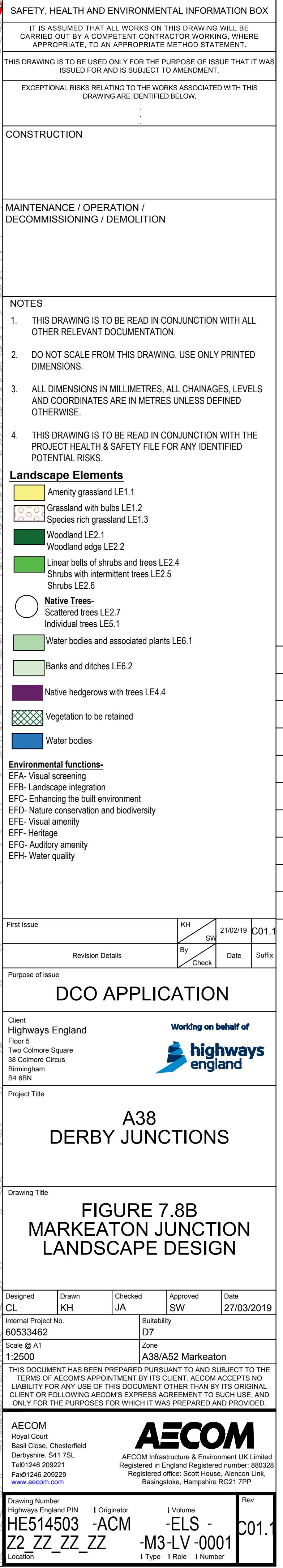
Hedera hibernica
Hedera colchica 'Sulphur Heart'
Parthenocissus quinquefolia

90% transplants and 10% feather trees

Transplants
 Acer campestre 10%
 Corylus avellana (S) 5%
 Crataegus monogyna (S) 60%
 Ilex aquifolium 5%
 Prunus spinosa (S) 5%
 Viburnum opulus (S) 5%
Feather trees
 Prunus spinosa 5%
 Quercus robur 5%

Numbers to be included on the detailed planting plans

Standard Trees
Betula pendula
Populus tremula
Quercus robur
Sorbus aucuparia
Ulmus 'New Horizon'



LE1.1- Amenity Grassland

25% Perennial- Rye Grass
20% Creeping Red Fescue
30% Hard Fescue
10% Smooth Stalked Meadow Grass
10% Brown Top Bent
5% White Clover

LE1.2 - Grassland with bulbs

Galanthus nivalis- Snowdrops
Hyacinthoides non scripta- Native
English Bluebell
Narcissus pseudonarcissus - Wild
Daffodil

LE2.7- Scattered trees

Numbers to be included on detailed
planting plans
Feathered Trees
Betula pendula
Betula pubescens
Quercus petraea
Quercus robur
Populus tremula
Prunus avium
Sorbus aucuparia

LE6.1 Water bodies and
associated plants

Butomus umbellatus 15%
Glyceria fluitans 15%
Iris pseudacorus 10%
Lythrum salicaria 20%
Nymphaea alba (to be specified)
Phalaris arundinacea 10%
Potamogeton natans (to be specified)
Ranunculus aquatilis 20%
Sparganium erectum 10%

LE1.3- Species rich grassland

Wild Flowers 20%
Achillea millefolium 0.5%
Centaurea nigra 3%
Daucus carota 1%
Galium verum 2.5%
Geranium pratense 0.3%
Knautia arvensis 1.2%
Leontodon hispidus 0.4%
Leucanthemum vulgare 0.5%
Lotus corniculatus 0.5%
Malva moschata 1%
Plantago lanceolata 0.5%
Plantago media 0.5%
Primula veris 1%
Prunella vulgaris 1%
Ranunculus acris 2%
Ranunculus bulbosus 2%
Rhinanthus minor 1.5%
Rumex acetosa 1%
Trifolium pratense 0.1%

LE4.4- Native hedgerows with trees

90% transplants and 10% feathered trees
Transplants
Acer campestre 10%
Corylus avellana 5%
Crataegus monogyna 60%
Ilex aquifolium 5%
Lonicera periclymenum 5%
Viburnum opulus 5%
Feathered trees
Prunus avium 5%
Quercus petraea 5%

LE6.2 Banks and Ditches

Caltha palustris 10%
Filipendula ulmaria 20%
Mentha aquatic 10%
Myosotis scorpiodes 10%
Nasturtium officinalis agg 10%
Valeriana dioica 10%
Veronica beccabunga 15%
Veronica catenata 15%

LE2.1 Woodland- Elevated areas

70% trees and 30% shrubs
Transplants
Betula pendula 15%
Betula pubescens 15%
Corylus avellana (S) 5%
Crataegus monogyna (S) 5%
Ilex aquifolium (S) 10%
Prunus avium 5%
Quercus petraea 15%
Quercus robur 15%
Rosa canina (S) 5%
Salix caprea 10%
Salix fragilis 10%
Salix cinerea (S) 5%
Tilia cordata 10%
Viburnum opulus (S) 5%
Feathered trees 5%
Betula pubescens 3%
Quercus robur 2%

LE5.1- Individual trees

Numbers to be included on detailed
planting plans
Standard trees
Betula pendula
Sorbus aucuparia
Ulmus 'New Horizon'

LE2.1 Woodland- Floodplain

75% trees and 25% shrubs
Transplants
Alnus glutinosa 10%
Betula pendula 15%
Betula pubescens 10%
Crataegus monogyna (S) 5%
Ilex aquifolium (S) 5%
Quercus petraea 5%
Rosa canina (S) 5%
Salix caprea 10%
Salix fragilis 10%
Salix cinerea (S) 5%
Tilia cordata 10%
Viburnum opulus (S) 5%
Feathered trees 5%
Alnus glutinosa 2%
Betula pubescens 3%

LE2.2 Woodland Edge

60% trees and 40% shrubs
Transplants
Betula pendula 10%
Corylus avellana (S) 10%
Crataegus monogyna (S) 10%
Ilex aquifolium (S) 10%
Malus sylvestris 10%
Prunus avium 10%
Prunus padus 10%
Quercus robur 10%
Sorbus aucuparia 10%
Viburnum opulus (S) 5%
Feathered trees 5%
Betula pendula 3%
Quercus petraea 2%

LE2.4 Linear belts of shrubs
and Trees

60% trees and 40% shrubs
Transplants
Alnus glutinosa 15%
Betula pubescens 15%
Crataegus monogyna (S) 10%
Ilex aquifolium (S) 10%
Rosa canina (S) 10%
Prunus spinosa (S) 10%
Rosa canina (S) 5%
Salix caprea 15%
Salix fragilis 10%
Viburnum opulus (S) 5%
Feathered trees 5%
Alnus glutinosa 3%
Betula pubescens 2%

LE2.5- Shrubs with intermittent trees

35% feather trees and 65% shrubs
Transplants
Corylus avellana (S) 15%
Crataegus monogyna (S) 15%
Ilex aquifolium (S) 10%
Lonicera periclymenum (S) 5%
Rosa canina (S) 10%
Viburnum opulus (S) 10%
Feathered trees 35%
Populus tremula 15%
Prunus avium 10%
Sorbus aucuparia 10%

LE2.6 - Shrubs

Numbers to be included on detailed
planting plans
Corylus avellana (S)
Crataegus monogyna (S)
Ilex aquifolium (S)
Lonicera periclymenum (S)
Prunus spinosa (S)
Rosa canina (S)
Viburnum opulus (S)



SAFETY, HEALTH AND ENVIRONMENTAL INFORMATION BOX				
IT IS ASSUMED THAT ALL WORKS ON THIS DRAWING WILL BE CARRIED OUT BY A COMPETENT CONTRACTOR WORKING, WHERE APPROPRIATE, TO AN APPROPRIATE METHOD STATEMENT.				
THIS DRAWING IS TO BE USED ONLY FOR THE PURPOSE OF ISSUE THAT IT WAS ISSUED FOR AND IS SUBJECT TO AMENDMENT.				
EXCEPTIONAL RISKS RELATING TO THE WORKS ASSOCIATED WITH THIS DRAWING ARE IDENTIFIED BELOW.				
CONSTRUCTION				
MAINTENANCE / OPERATION / DECOMMISSIONING / DEMOLITION				
NOTES				

1. THIS DRAWING IS TO BE READ IN CONJUNCTION WITH ALL OTHER RELEVANT DOCUMENTATION.
2. DO NOT SCALE FROM THIS DRAWING. USE ONLY PRINTED DIMENSIONS.
3. ALL DIMENSIONS IN MILLIMETRES, ALL CHAINAGES, LEVELS AND COORDINATES ARE IN METRES UNLESS DEFINED OTHERWISE.
4. THIS DRAWING IS TO BE READ IN CONJUNCTION WITH THE PROJECT HEALTH & SAFETY FILE FOR ANY IDENTIFIED POTENTIAL RISKS.

Landscape Elements

- Amenity grassland LE1.1
- Grassland with bulbs LE1.2
- Species rich grassland LE1.3
- Woodland LE2.1
- Woodland edge LE2.2
- Linear belts of shrubs and trees LE2.4
- Shrubs with intermittent trees LE2.5
- Shrubs LE2.6
- Native Trees- Scattered trees LE2.7
- Individual trees LE5.1
- Water bodies and associated plants LE6.1
- Banks and ditches LE6.2
- Native hedgerows with trees LE4.4
- Vegetation to be retained
- Water bodies
- Reinstated agricultural land

Environmental functions-

- EFA- Visual screening
- EFB- Landscape integration
- EFC- Enhancing the built environment
- EFD- Nature conservation and biodiversity
- EFE- Visual amenity
- EFF- Heritage
- EFG- Auditory amenity
- EFH- Water quality

First Issue	KH	21/02/19	P01.1
Revision Details	By	Check	Date

DCO SUBMISSION

Client
Highways England
Floor 5
Two Colmore Square
38 Colmore Circus
Birmingham
B4 6BN

A38
DERBY JUNCTIONS

FIGURE 7.8C
LITTLE EATON JUNCTION
LANDSCAPE DESIGN
PAGE 1 OF 2

Designed CL	Drawn KH	Checked JA	Approved SW	Date 27/03/2019
Internal Project No. 60533462			Suitability D7	
Scale @ A1 1:2500			Zone A38/A61 Little Eaton	

THIS DOCUMENT HAS BEEN PREPARED PURSUANT TO AND SUBJECT TO THE TERMS OF AECOM'S APPOINTMENT BY ITS CLIENT. AECOM ACCEPTS NO LIABILITY FOR ANY USE OF THIS DOCUMENT OTHER THAN BY ITS ORIGINAL CLIENT OR FOLLOWING AECOM'S EXPRESS AGREEMENT TO SUCH USE, AND ONLY FOR THE PURPOSES FOR WHICH IT WAS PREPARED AND PROVIDED.

AECOM
Royal Court
Basil Close, Chesterfield
Derbyshire, S41 7SL
Tel:01246 209221
Fax:01246 209229
www.aecom.com

AECOM
AECOM Infrastructure & Environment UK Limited
Registered in England Registered number: 880328
Registered office: Scott House, Alencon Link,
Basingstoke, Hampshire RG21 7PH

Drawing Number HE514503	1 Originator -ACM	1 Volume -ELS -	Rev P01.1
Z3_ZZ_ZZ_ZZ	-M3-LV-0001	I Type 1 Role 1 Number	

