

A303 Amesbury to Berwick Down

TR010025

2.10 Traffic Regulation Measures Plans (Speed Limits)

APFP Regulation 5(2)(o)

Planning Act 2008

Infrastructure Planning (Applications: Prescribed
Forms and Procedure) Regulations 2009

October 2018



- NOTES:**
1. ALL DIMENSIONS ARE IN METRES UNLESS NOTED OTHERWISE
 2. THESE TRAFFIC REGULATION MEASURES (SPEED LIMITS) PLANS SHOULD BE READ IN CONJUNCTION WITH OTHER PLANS AND APPLICATION DOCUMENTS, IN PARTICULAR THE DEVELOPMENT CONSENT ORDER SCHEDULE ENTITLED 'TRAFFIC REGULATION MEASURES, ETC', THE TRAFFIC REGULATION (CLEARWAYS AND PROHIBITIONS) PLANS, THE CLASSIFICATION OF ROADS PLAN AND THE DE-TRUNKING PLANS.

LEGEND:



THE SCHEME (SHOWN FOR ILLUSTRATIVE PURPOSES ONLY)



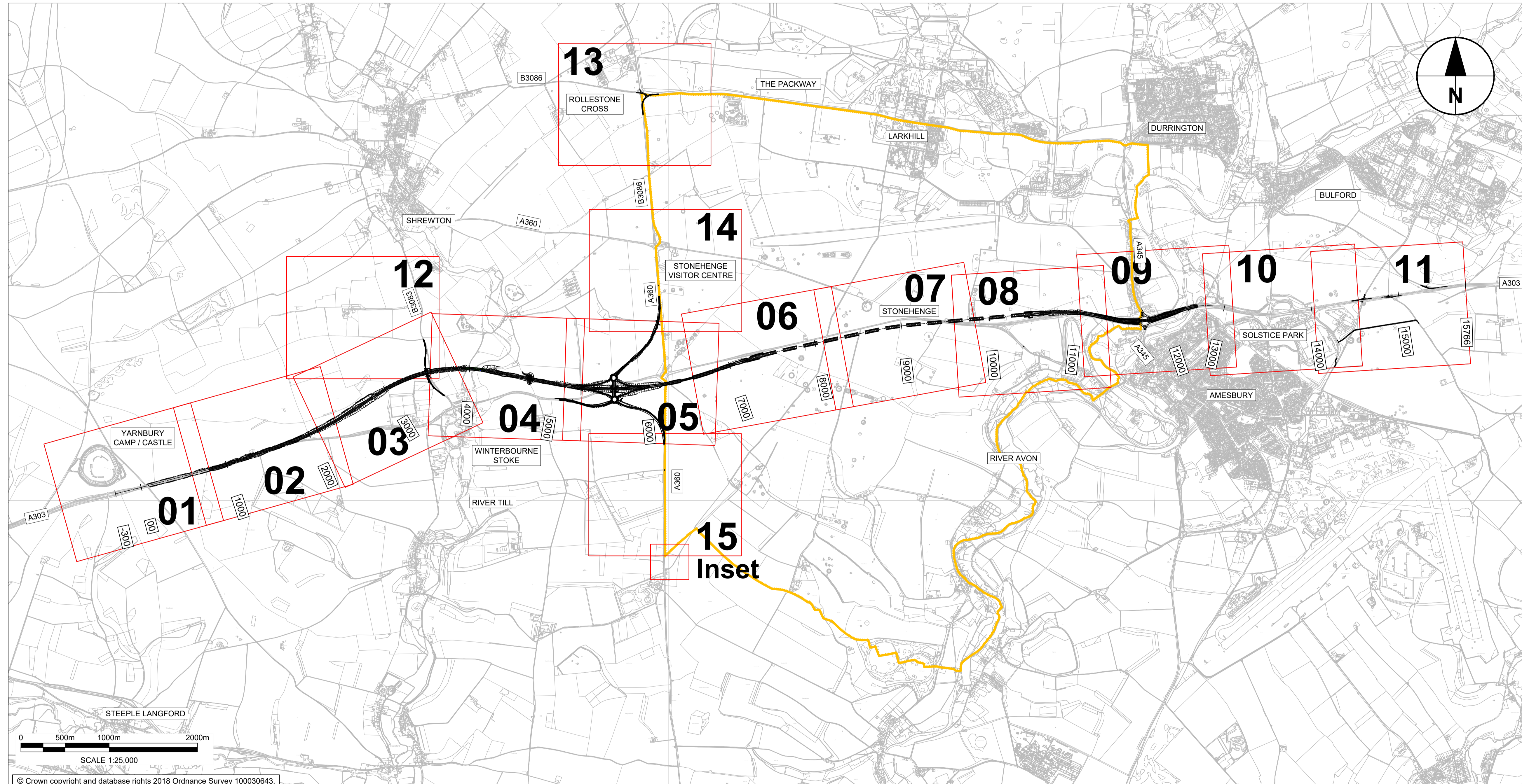
SHEET USED AS PART OF THIS
DRAWING SERIES



WORLD HERITAGE SITE BOUNDARY

CHAINAGE (MEASURED DISTANCE
ALONG THE SCHEME LENGTH)

LIMIT OF ORDNANCE SURVEY



LIMIT OF ORDNANCE SURVEY

SUBMITTED FOR DEVELOPMENT CONSENT ORDER APPLICATION	AV TH	OCT. 2018	P02
Revision Details	By Check	Date	Suffix



Purpose of Issue	
------------------	--

DCO APPLICATION

Project Title

A303
Amesbury to Berwick Down

Drawing Title

TRAFFIC REGULATION
MEASURES PLANS
(SPEED LIMITS)
REGULATION 5(2)(o)
KEY PLAN

Highways England Project Office
Temple Quay House
2 The Square, Temple Quay
Bristol, BS1 6HA

Scale @ A1

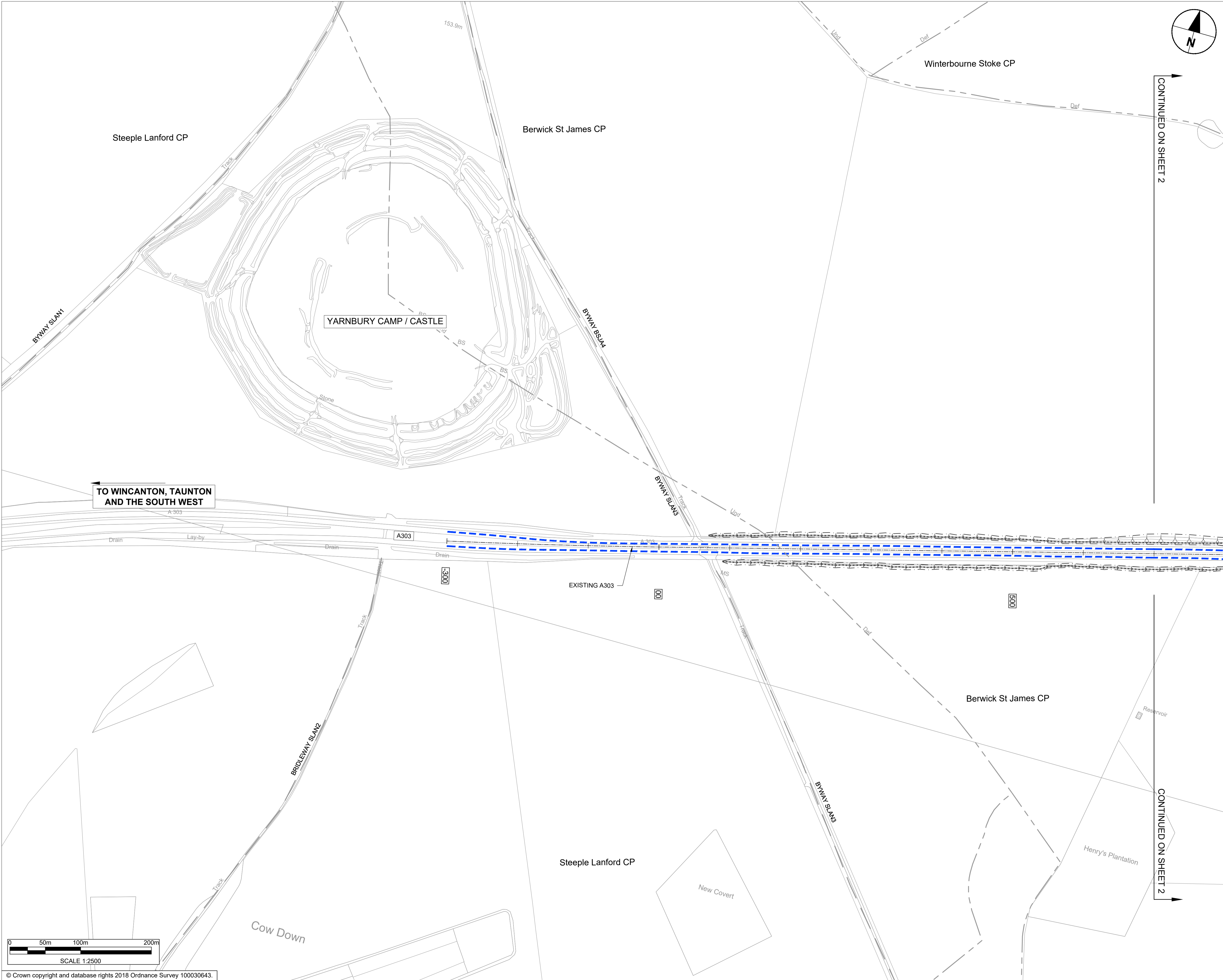
1:25000

Application Document Number

TR010025 - 2.10

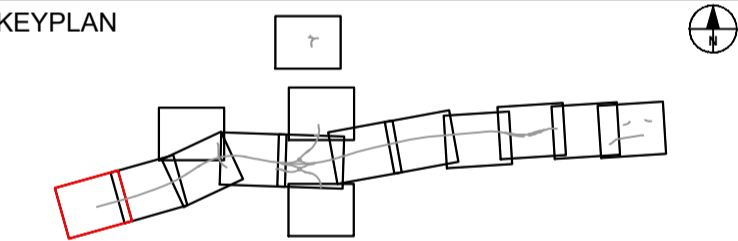
Rev

P02



- NOTES:
1. ALL DIMENSIONS ARE IN METRES UNLESS NOTED OTHERWISE.
 2. THESE TRAFFIC REGULATION MEASURES (SPEED LIMITS) PLANS SHOULD BE READ IN CONJUNCTION WITH OTHER PLANS AND APPLICATION DOCUMENTS, IN PARTICULAR THE DEVELOPMENT CONSENT ORDER SCHEDULE ENTITLED 'TRAFFIC REGULATION MEASURES, ETC'; THE TRAFFIC REGULATION (CLEARWAYS AND PROHIBITIONS) PLANS, THE CLASSIFICATION OF ROADS PLAN AND THE DE-TRUNKING PLANS.

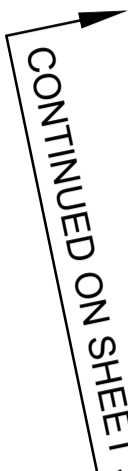
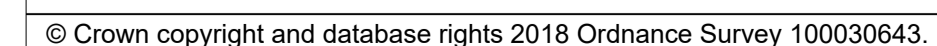
- LEGEND:
- THE SCHEME (SHOWN FOR ILLUSTRATIVE PURPOSES)
 - PROPOSED NATIONAL SPEED LIMIT ON DUAL CARRIAGEWAY AND SLIP ROADS (70MPH)
 - PROPOSED NATIONAL SPEED LIMIT ON SINGLE CARRIAGEWAY ROAD (60MPH)
 - PROPOSED 50MPH SPEED LIMIT
 - PROPOSED 40MPH SPEED LIMIT
 - PROPOSED 30MPH SPEED LIMIT
 - VARIABLE SPEED LIMIT
 - EXISTING PUBLIC RIGHT OF WAY
 - PARISH BOUNDARY
 - CHAINAGE (MEASURED DISTANCE ALONG THE SCHEME LENGTH)



SUBMITTED FOR DEVELOPMENT CONSENT ORDER APPLICATION	AV TH	OCT. 2018	P02
Revision Details	By Check	Date	Suffix



Purpose of Issue	DCO APPLICATION
Project Title	A303 Amesbury to Berwick Down
Drawing Title	TRAFFIC REGULATION MEASURES PLANS (SPEED LIMITS) REGULATION 5(2)(o) SHEET 1 OF 15
Highways England Project Office Temple Quay House 2 The Square, Temple Quay Bristol, BS1 6HA Scale @ A1	1:2500
Application Document Number	TR010025 - 2.10
Rev	P02

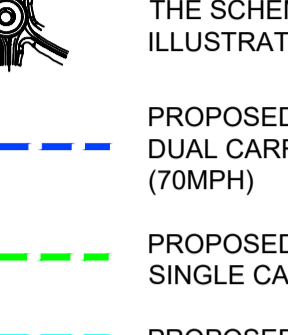


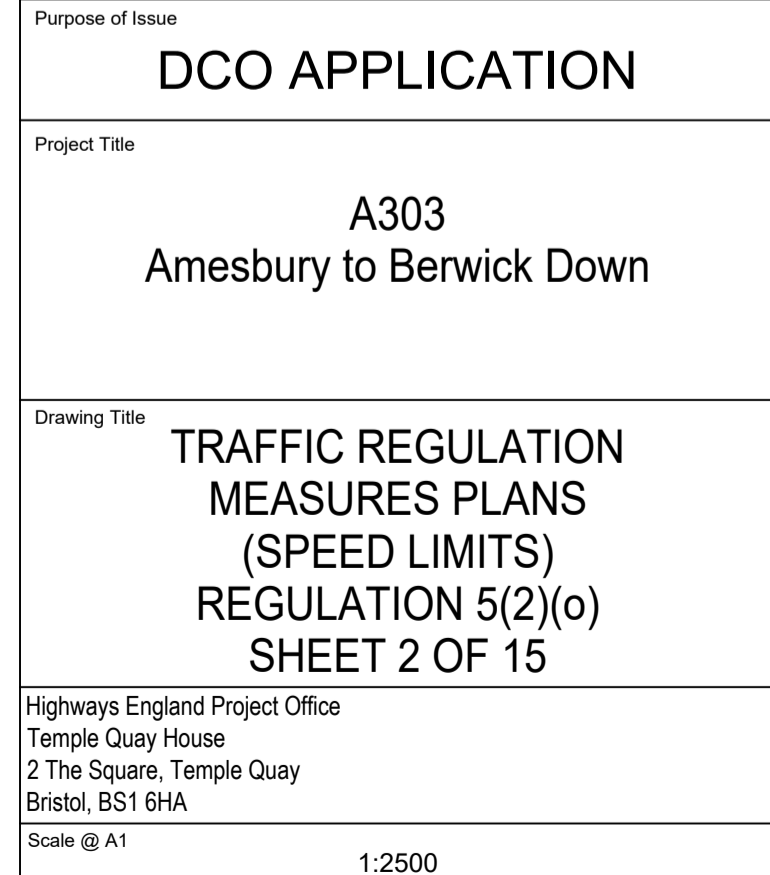
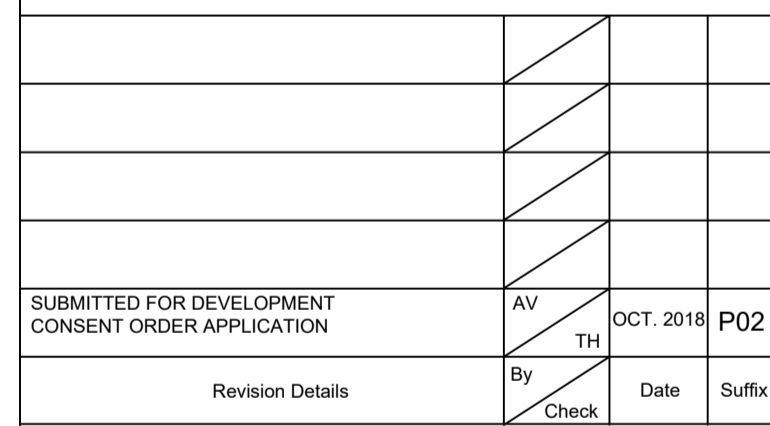
CONTINUED ON SHEET 1

CONTINUED ON SHEET 1

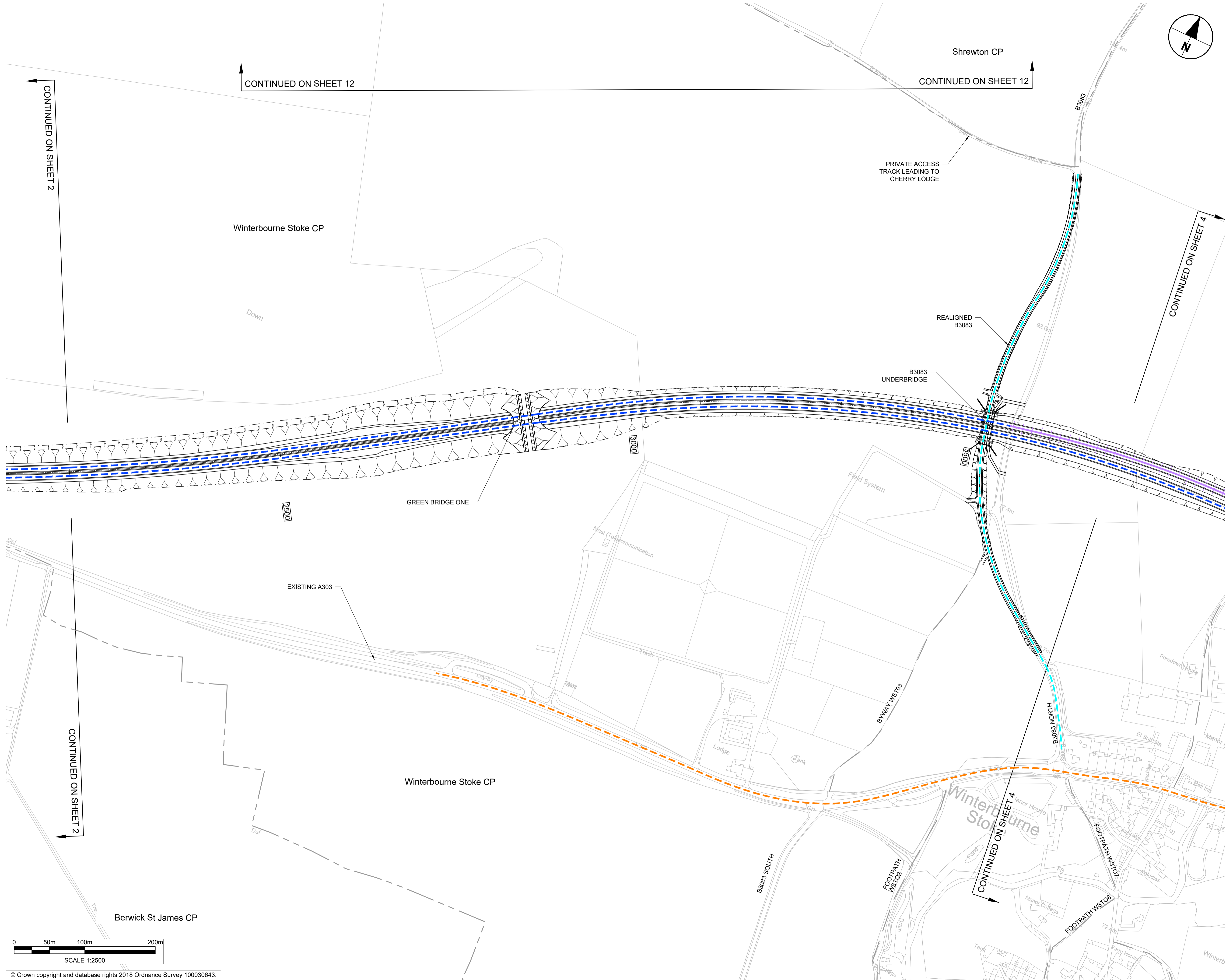
CONTINUED ON SHEET 1

CONTINUED ON SHEET 3

- LEGEND:**
- 
- THE SCHEME (SHOWN FOR ILLUSTRATIVE PURPOSES)
- PROPOSED NATIONAL SPEED LIMIT ON DUAL CARRIAGEWAY AND SLIP ROADS (70MPH)
- PROPOSED NATIONAL SPEED LIMIT ON SINGLE CARRIAGEWAY ROAD (60MPH)
- PROPOSED 50MPH SPEED LIMIT
- PROPOSED 40MPH SPEED LIMIT
- PROPOSED 30MPH SPEED LIMIT
- VARIABLE SPEED LIMIT
- EXISTING PUBLIC RIGHT OF WAY
- PARISH BOUNDARY
- CHAINAGE (MEASURED DISTANCE ALONG THE SCHEME LENGTH)



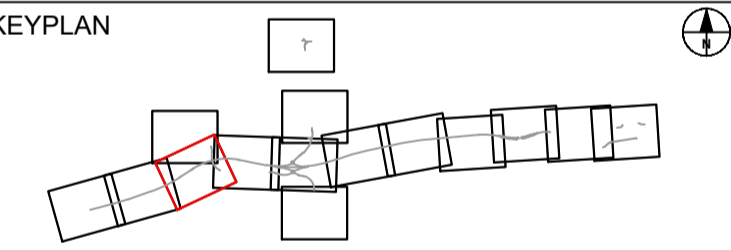
Application Document Number	Rev
TR010025 - 2.10	P02



- NOTES:
1. ALL DIMENSIONS ARE IN METRES UNLESS NOTED OTHERWISE.
 2. THESE TRAFFIC REGULATION MEASURES (SPEED LIMITS) PLANS SHOULD BE READ IN CONJUNCTION WITH OTHER PLANS AND APPLICATION DOCUMENTS. IN PARTICULAR THE DEVELOPMENT CONSENT ORDER SCHEDULE ENTITLED 'TRAFFIC REGULATION MEASURES, ETC'. THE TRAFFIC REGULATION (CLEARWAYS AND PROHIBITIONS) PLANS, THE CLASSIFICATION OF ROADS PLAN AND THE DE-TRUNKING PLANS.

LEGEND:

- THE SCHEME (SHOWN FOR ILLUSTRATIVE PURPOSES)
- PROPOSED NATIONAL SPEED LIMIT ON DUAL CARRIAGEWAY AND SLIP ROADS (70MPH)
- PROPOSED NATIONAL SPEED LIMIT ON SINGLE CARRIAGEWAY ROAD (60MPH)
- PROPOSED 50MPH SPEED LIMIT
- PROPOSED 40MPH SPEED LIMIT
- PROPOSED 30MPH SPEED LIMIT
- VARIABLE SPEED LIMIT
- EXISTING PUBLIC RIGHT OF WAY
- PARISH BOUNDARY
- CHAINAGE (MEASURED DISTANCE ALONG THE SCHEME LENGTH)



SUBMITTED FOR DEVELOPMENT CONSENT ORDER APPLICATION		AV TH	OCT. 2018	P02
Revision Details		By Check	Date	Suffix

highways england

Purpose of Issue
DCO APPLICATION

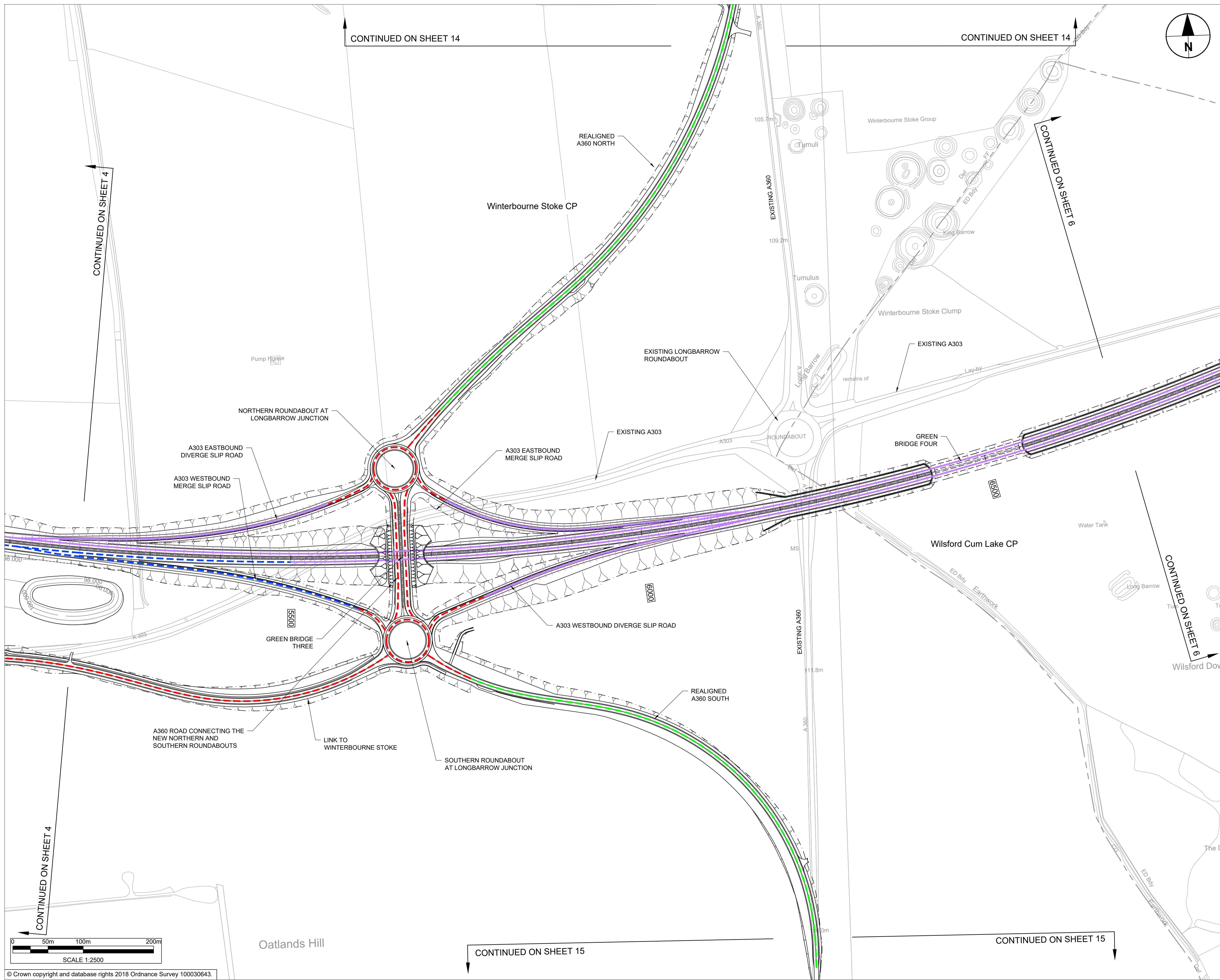
Project Title
**A303
Amesbury to Berwick Down**

Drawing Title
**TRAFFIC REGULATION
MEASURES PLANS
(SPEED LIMITS)
REGULATION 5(2)(o)
SHEET 3 OF 15**

Highways England Project Office
Temple Quay House
2 The Square, Temple Quay
Bristol, BS1 6HA
Scale @ A1 1:2500

Application Document Number
TR010025 - 2.10

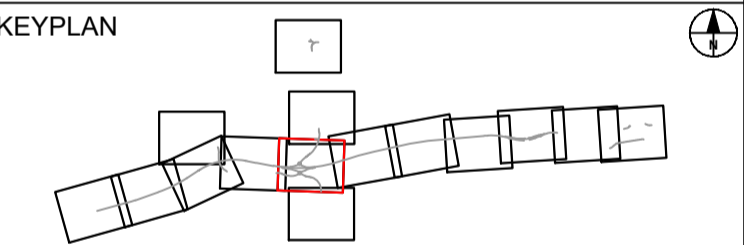
Rev
P02



- NOTES:
1. ALL DIMENSIONS ARE IN METRES UNLESS NOTED OTHERWISE.
 2. THESE TRAFFIC REGULATION MEASURES (SPEED LIMITS) PLANS SHOULD BE READ IN CONJUNCTION WITH OTHER PLANS AND APPLICATION DOCUMENTS, IN PARTICULAR THE DEVELOPMENT CONSENT ORDER SCHEDULE ENTITLED TRAFFIC REGULATION MEASURES, ETC.; THE TRAFFIC REGULATION (CLEARWAYS AND PROHIBITIONS) PLANS, THE CLASSIFICATION OF ROADS PLAN AND THE DE-TRUNKING PLANS.

LEGEND:

- THE SCHEME (SHOWN FOR ILLUSTRATIVE PURPOSES)
- PROPOSED NATIONAL SPEED LIMIT ON DUAL CARRIAGEWAY AND SLIP ROADS (70MPH)
- PROPOSED NATIONAL SPEED LIMIT ON SINGLE CARRIAGEWAY ROAD (60MPH)
- PROPOSED 50MPH SPEED LIMIT
- PROPOSED 40MPH SPEED LIMIT
- PROPOSED 30MPH SPEED LIMIT
- VARIABLE SPEED LIMIT
- EXISTING PUBLIC RIGHT OF WAY
- PARISH BOUNDARY
- CHAINAGE (MEASURED DISTANCE ALONG THE SCHEME LENGTH)



SUBMITTED FOR DEVELOPMENT CONSENT ORDER APPLICATION		AV	TH	OCT. 2018	P02
Revision Details		By	Check	Date	Suffix



Purpose of Issue

DCO APPLICATION

Project Title

**A303
Amesbury to Berwick Down**

Drawing Title

**TRAFFIC REGULATION
MEASURES PLANS
(SPEED LIMITS)
REGULATION 5(2)(o)
SHEET 5 OF 15**

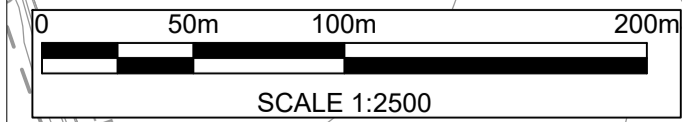
Highways England Project Office
Temple Quay House
2 The Square, Temple Quay
Bristol, BS1 6HA
Scale @ A1

Application Document Number

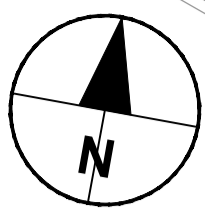
TR010025 - 2.10

Rev

P02



© Crown copyright and database rights 2018 Ordnance Survey 100030643.



NOTES:

1. ALL DIMENSIONS ARE IN METRES UNLESS NOTED OTHERWISE.
2. THESE TRAFFIC REGULATION MEASURES (SPEED LIMITS) PLANS SHOULD BE READ IN CONJUNCTION WITH OTHER PLANS AND APPLICATION DOCUMENTS, IN PARTICULAR THE DEVELOPMENT CONSENT ORDER SCHEDULE ENTITLED 'TRAFFIC REGULATION MEASURES, ETC'; THE TRAFFIC REGULATION (CLEARWAYS AND PROHIBITIONS) PLANS, THE CLASSIFICATION OF ROADS PLAN AND THE DE-TRUNKING PLANS.

LEGEND:



THE SCHEME (SHOWN FOR ILLUSTRATIVE PURPOSES)



PROPOSED NATIONAL SPEED LIMIT ON DUAL CARRIAGEWAY AND SLIP ROADS (70MPH)



PROPOSED NATIONAL SPEED LIMIT ON SINGLE CARRIAGEWAY ROAD (60MPH)



PROPOSED 50MPH SPEED LIMIT



PROPOSED 40MPH SPEED LIMIT



PROPOSED 30MPH SPEED LIMIT



VARIABLE SPEED LIMIT



EXISTING PUBLIC RIGHT OF WAY

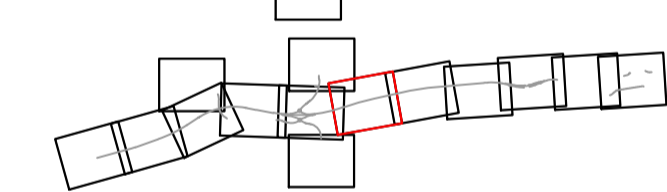


PARISH BOUNDARY



CHAINAGE (MEASURED DISTANCE ALONG THE SCHEME LENGTH)

KEYPLAN



SUBMITTED FOR DEVELOPMENT CONSENT ORDER APPLICATION	AV	TH	OCT. 2018	P02
Revision Details	By	Check	Date	Suffix



Purpose of Issue
DCO APPLICATION

Project Title
**A303
Amesbury to Berwick Down**

Drawing Title
**TRAFFIC REGULATION
MEASURES PLANS
(SPEED LIMITS)
REGULATION 5(2)(o)
SHEET 6 OF 15**

Highways England Project Office
Temple Quay House
2 The Square, Temple Quay
Bristol, BS1 6HA

Scale @ A1

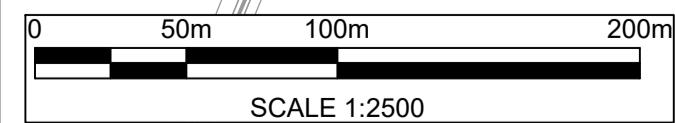
1:2500

Application Document Number

TR010025 - 2.10

Rev

P02




1. ALL DIMENSIONS ARE IN METRES UNLESS NOTED OTHERWISE.
2. THESE TRAFFIC REGULATION MEASURES (SPEED LIMITS) PLANS SHOULD BE READ IN CONJUNCTION WITH OTHER PLANS AND APPLICATION DOCUMENTS, IN PARTICULAR THE DEVELOPMENT CONSENT ORDER SCHEDULE ENTITLED 'TRAFFIC REGULATION MEASURES, ETC.' THE TRAFFIC REGULATION (CLEARWAYS AND PROHIBITIONS) PLANS, THE CLASSIFICATION OF ROADS PLAN AND THE DE-TRUNKING PLANS.

PROPOSED NATIONAL SPEED LIMIT ON SINGLE CARRIAGEWAY ROAD (60MPH)

— — — — PROPOSED 50MPH SPEED LIMIT

--- PROPOSED 40MPH SPEED LIMIT

— — — — PROPOSED 30MPH SPEED LIMIT

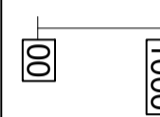


VARIABLE SPEED LIMIT

— — — EXISTING PUBLIC RIGHT OF WAY

— — — — — PARISH BOUNDARY

CHAINAGE (MEASURED DISTANCE
ALONG THE SCHEME LENGTH)

[illegible]

SUBMITTED FOR DEVELOPMENT CONSENT ORDER APPLICATION	AV TH	OCT. 2018	P02
Revision Details	By Check	Date	Suffix



Project Title	A303 Amesbury to Berwick Down
---------------	----------------------------------

Drawing Title

TRAFFIC REGULATION
MEASURES PLANS
(SPEED LIMITS)
REGULATION 5(2)(o)
SHEET 7 OF 15

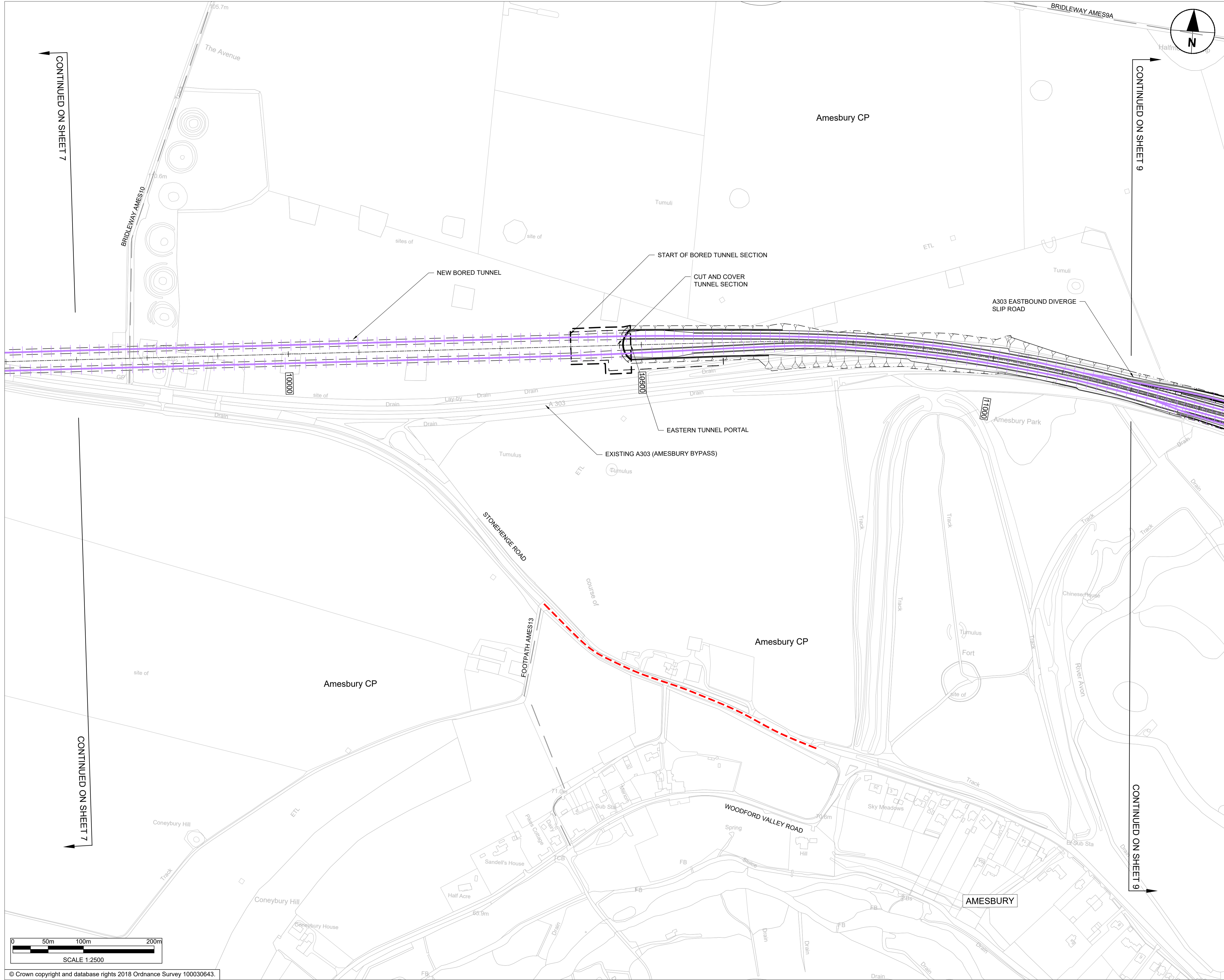
Highways England Project Office
Temple Quay House
2 The Square, Temple Quay
Bristol, BS1 6HA

Scale @ A1

1:2500

Application Document Number
TR010025 - 2.10

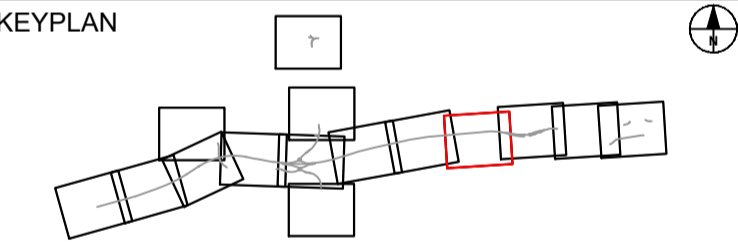
Rev
P02



- NOTES:
1. ALL DIMENSIONS ARE IN METRES UNLESS NOTED OTHERWISE.
 2. THESE TRAFFIC REGULATION MEASURES (SPEED LIMITS) PLANS SHOULD BE READ IN CONJUNCTION WITH OTHER PLANS AND APPLICATION DOCUMENTS, IN PARTICULAR THE DEVELOPMENT CONSENT ORDER SCHEDULE ENTITLED 'TRAFFIC REGULATION MEASURES, ETC'; THE TRAFFIC REGULATION (CLEARWAYS AND PROHIBITIONS) PLANS, THE CLASSIFICATION OF ROADS PLAN AND THE DE-TRUNKING PLANS.

LEGEND:

- THE SCHEME (SHOWN FOR ILLUSTRATIVE PURPOSES)
- PROPOSED NATIONAL SPEED LIMIT ON DUAL CARRIAGEWAY AND SLIP ROADS (70MPH)
- PROPOSED NATIONAL SPEED LIMIT ON SINGLE CARRIAGEWAY ROAD (60MPH)
- PROPOSED 50MPH SPEED LIMIT
- PROPOSED 40MPH SPEED LIMIT
- PROPOSED 30MPH SPEED LIMIT
- VARIABLE SPEED LIMIT
- EXISTING PUBLIC RIGHT OF WAY
- PARISH BOUNDARY
- CHAINAGE (MEASURED DISTANCE ALONG THE SCHEME LENGTH)



SUBMITTED FOR DEVELOPMENT CONSENT ORDER APPLICATION	AV	TH	OCT. 2018	P02
Revision Details	By	Check	Date	Suffix



Purpose of Issue

DCO APPLICATION

Project Title

**A303
Amesbury to Berwick Down**

Drawing Title

**TRAFFIC REGULATION
MEASURES PLANS
(SPEED LIMITS)
REGULATION 5(2)(o)
SHEET 8 OF 15**

Highways England Project Office
Temple Quay House
2 The Square, Temple Quay
Bristol, BS1 6HA
Scale @ A1

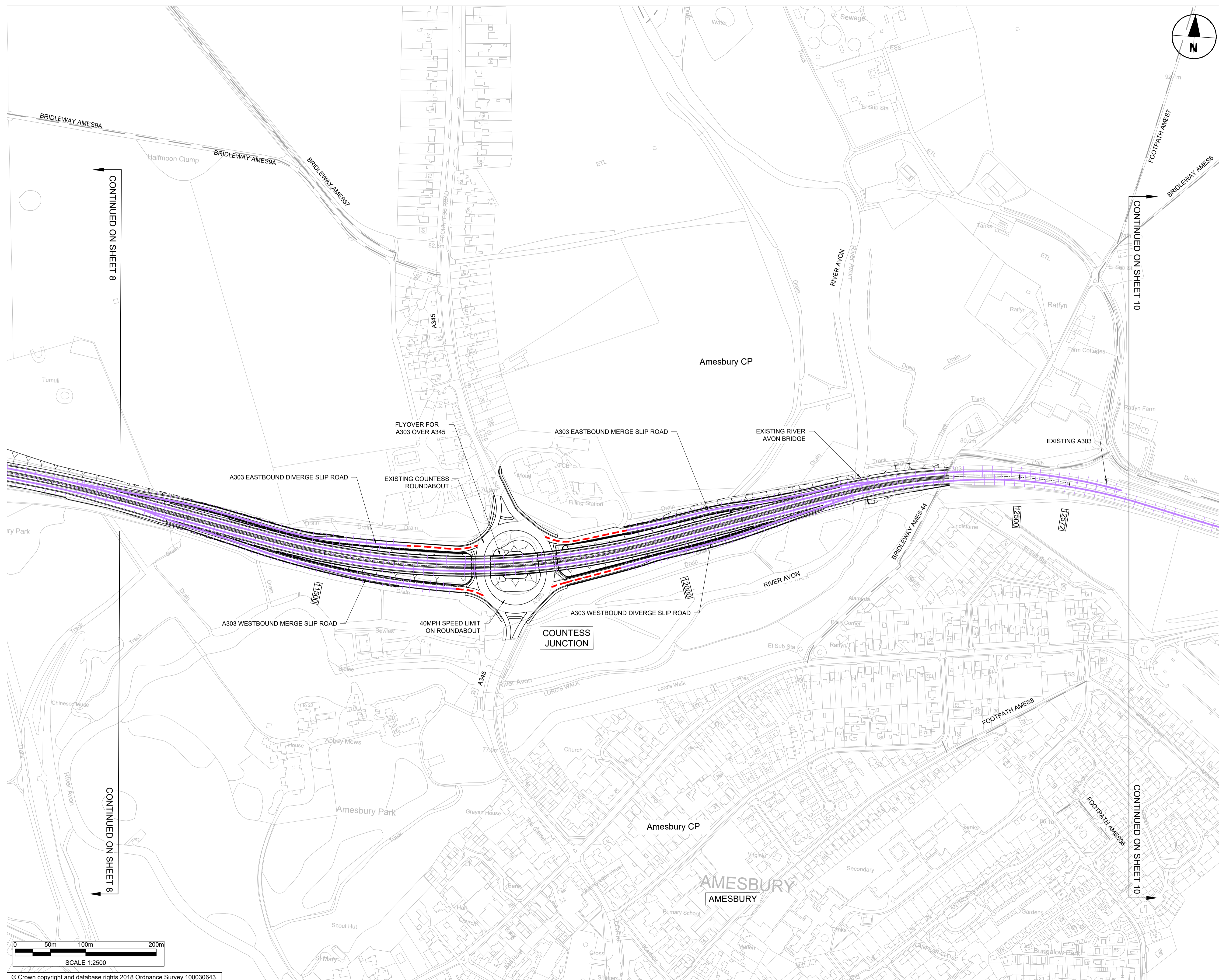
1:2500

Application Document Number

TR010025 - 2.10

Rev

P02



NOTES:

1. ALL DIMENSIONS ARE IN METRES UNLESS NOTED OTHERWISE.
2. THESE TRAFFIC REGULATION MEASURES (SPEED LIMITS) PLANS SHOULD BE READ IN CONJUNCTION WITH OTHER PLANS AND APPLICATION DOCUMENTS, IN PARTICULAR THE DEVELOPMENT CONSENT ORDER SCHEDULE ENTITLED 'TRAFFIC REGULATION MEASURES, ETC', THE 'TRAFFIC REGULATION (CLEARWAYS AND PROHIBITIONS) PLANS, THE CLASSIFICATION OF ROADS PLAN AND THE DE-TRUNKING PLANS.

LEGEND:



THE SCHEME (SHOWN FOR ILLUSTRATIVE PURPOSES)

PROPOSED NATIONAL SPEED LIMIT ON
DUAL CARRIAGEWAY AND SLIP ROADS
(70MPH)

PROPOSED NATIONAL SPEED LIMIT ON
SINGLE CARRIAGEWAY ROAD (60MPH)

PROPOSED 50MPH SPEED LIMIT

PROPOSED 40MPH SPEED LIMIT

PROPOSED 30MPH SPEED LIMIT

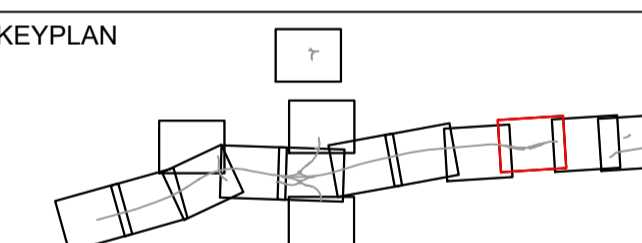
- VARIABLE SPEED LIMIT

— EXISTING PUBLIC RIGHT OF WAY

— PARISH BOUNDARY

CHAINAGE (MEASURED DISTANCE
ALONG THE SCHEME LENGTH)

KEYPLAN



SUBMITTED FOR DEVELOPMENT CONSENT ORDER APPLICATION	AV TH	OCT. 2018	P02
Revision Details	By ✓ Check	Date	Suffix



	Purpose of Issue
--	------------------

DCO APPLICATION

Project Title

A303
Amesbury to Berwick Down

Drawing Title

TRAFFIC REGULATION
MEASURES PLANS
(SPEED LIMITS)
REGULATION 5(2)(o)
SHEET 9 OF 15

Highways England Project Office
Temple Quay House
2 The Square, Temple Quay
Bristol, BS1 6HA

Scale @ A1

1:2500

Application Document Number

Document Number
TR010025 - 2.10

Rev

P02



1. ALL DIMENSIONS ARE IN METRES UNLESS NOTED OTHERWISE.
2. THESE TRAFFIC REGULATION MEASURES (SPEED LIMITS) PLANS SHOULD BE READ IN CONJUNCTION WITH OTHER PLANS AND APPLICATION DOCUMENTS, IN PARTICULAR THE DEVELOPMENT CONSENT ORDER SCHEDULE ENTITLED 'TRAFFIC REGULATION MEASURES, ETC', THE TRAFFIC REGULATION (CLEARWAYS AND PROHIBITIONS) PLANS, THE CLASSIFICATION OF ROADS PLAN AND THE DE-TRUNKING PLANS.



PROPOSED NATIONAL SPEED LIMIT ON
SINGLE CARRIAGEWAY ROAD (60MPH)

--- PROPOSED 50MPH SPEED LIMIT

--- PROPOSED 40MPH SPEED LIMIT

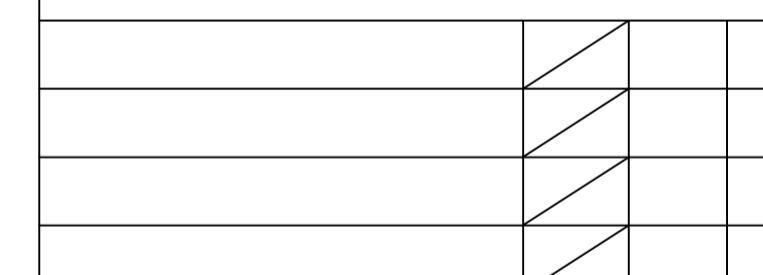
--- PROPOSED 30MPH SPEED LIMIT

VARIABLE SPEED LIMIT

— — — EXISTING PUBLIC RIGHT OF WAY

--- PARISH BOUNDARY

CHAINAGE (MEASURED DISTANCE
ALONG THE SCHEME LENGTH)



SUBMITTED FOR DEVELOPMENT CONSENT ORDER APPLICATION	AV	OCT. 2018	PO
--	----	-----------	----

Revision Details	By Check	Date	Su
------------------	-------------	------	----



Project Title	A303 Amesbury to Berwick Down
---------------	----------------------------------

Drawing Title	<p>TRAFFIC REGULATION MEASURES PLANS (SPEED LIMITS) REGULATION 5(2)(o) SHEET 11 OF 15</p>
---------------	---

Highways England Project Office
Temple Quay House
2 The Square, Temple Quay
Bristol BS1 6HA

Scale @ A1 1:2500

Application Document Number	Rev
TR010025 - 2.10	P02



1. ALL DIMENSIONS ARE IN METRES UNLESS NOTED OTHERWISE.
2. THESE TRAFFIC REGULATION MEASURES (SPEED LIMITS) PLANS SHOULD BE READ IN CONJUNCTION WITH OTHER PLANS AND APPLICATION DOCUMENTS, IN PARTICULAR THE DEVELOPMENT CONSENT ORDER SCHEDULE ENTITLED 'TRAFFIC REGULATION MEASURES, ETC', THE TRAFFIC REGULATION (CLEARWAYS AND PROHIBITIONS) PLANS, THE CLASSIFICATION OF ROADS PLAN AND THE DE-TRUNKING PLANS.

PROPOSED NATIONAL SPEED LIMIT ON
DUAL CARRIAGEWAY AND SLIP ROADS
(70MPH)

PROPOSED NATIONAL SPEED LIMIT ON SINGLE CARRIAGEWAY ROAD (60MPH)

— — — — PROPOSED 50MPH SPEED LIMIT

--- PROPOSED 40MPH SPEED LIMIT

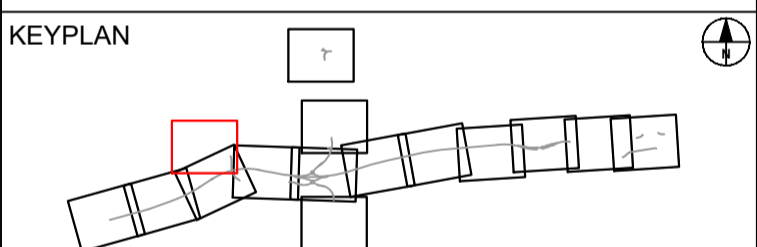
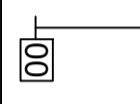
— — — — PROPOSED 30MPH SPEED LIMIT

 VARIABLE SPEED LIMIT

— — — EXISTING PUBLIC RIGHT OF WAY

— — — — — PARISH BOUNDARY

CHAINAGE (MEASURED DISTANCE
ALONG THE SCHEME LENGTH)



SUBMITTED FOR DEVELOPMENT CONSENT ORDER APPLICATION	AV TH	OCT. 2018	P02
Revision Details	By Check	Date	Suffix



Purpose of Issue

DCO APPLICATION

Project Title	A303 Amesbury to Berwick Down
---------------	----------------------------------

Drawing Title	<p>TRAFFIC REGULATION MEASURES PLANS (SPEED LIMITS) REGULATION 5(2)(o) SHEET 12 OF 15</p>
---------------	---

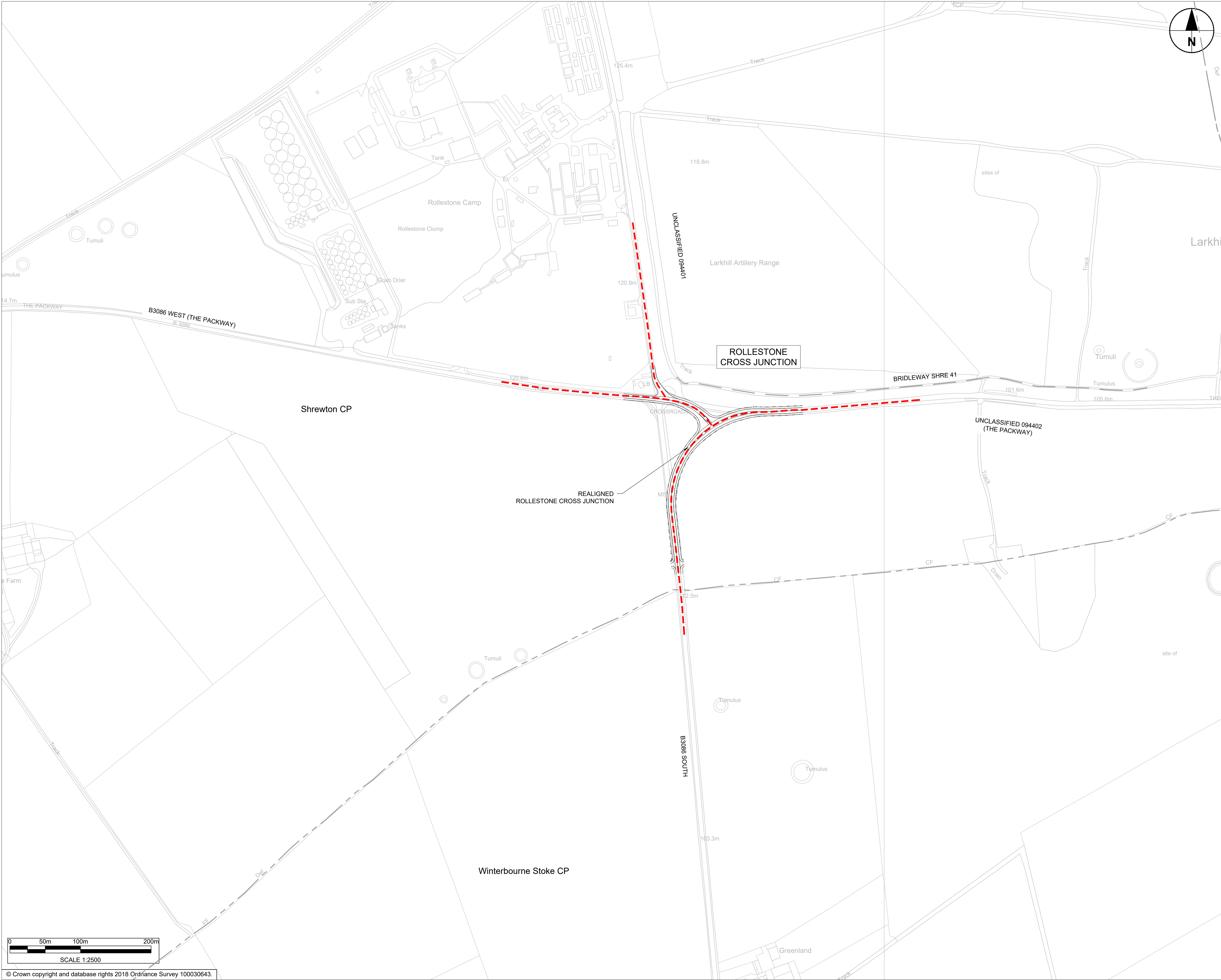
Scale @ A1

1:2500

Application Document Number

TR010025 - 2.10

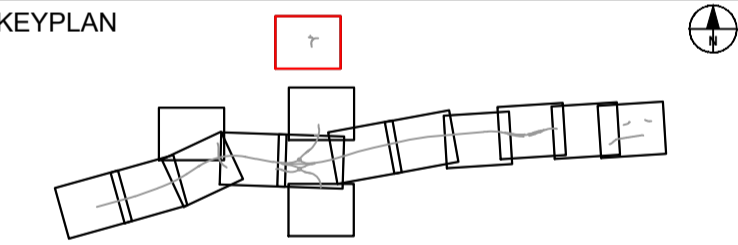
Rev
P02



- NOTES:
1. ALL DIMENSIONS ARE IN METRES UNLESS NOTED OTHERWISE.
 2. THESE TRAFFIC REGULATION MEASURES (SPEED LIMITS) PLANS SHOULD BE READ IN CONJUNCTION WITH OTHER PLANS AND APPLICATION DOCUMENTS, IN PARTICULAR THE DEVELOPMENT CONSENT ORDER SCHEDULE ENTITLED TRAFFIC REGULATION MEASURES, ETC.; THE TRAFFIC REGULATION (CLEARWAYS AND PROHIBITIONS) PLANS, THE CLASSIFICATION OF ROADS PLAN AND THE DE-TRUNKING PLANS.

LEGEND:

- THE SCHEME (SHOWN FOR ILLUSTRATIVE PURPOSES)
- PROPOSED NATIONAL SPEED LIMIT ON DUAL CARRIAGEWAY AND SLIP ROADS (70MPH)
- PROPOSED NATIONAL SPEED LIMIT ON SINGLE CARRIAGEWAY ROAD (60MPH)
- PROPOSED 50MPH SPEED LIMIT
- PROPOSED 40MPH SPEED LIMIT
- PROPOSED 30MPH SPEED LIMIT
- VARIABLE SPEED LIMIT
- EXISTING PUBLIC RIGHT OF WAY
- PARISH BOUNDARY
- CHAINAGE (MEASURED DISTANCE ALONG THE SCHEME LENGTH)



SUBMITTED FOR DEVELOPMENT CONSENT ORDER APPLICATION	AV By	TH Date	OCT. 2018 P02 Suffix



Purpose of Issue

DCO APPLICATION

Project Title

**A303
Amesbury to Berwick Down**

Drawing Title

**TRAFFIC REGULATION
MEASURES PLANS
(SPEED LIMITS)
REGULATION 5(2)(o)
SHEET 13 OF 15**

Highways England Project Office
Temple Quay House
2 The Square, Temple Quay
Bristol, BS1 6HA
Scale @ A1

Application Document Number











TR010025 - 2.10

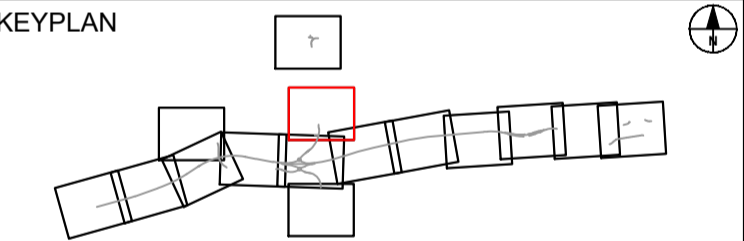
Rev

P02



- NOTES:
1. ALL DIMENSIONS ARE IN METRES UNLESS NOTED OTHERWISE.
 2. THESE TRAFFIC REGULATION MEASURES (SPEED LIMITS) PLANS SHOULD BE READ IN CONJUNCTION WITH OTHER PLANS AND APPLICATION DOCUMENTS, IN PARTICULAR THE DEVELOPMENT CONSENT ORDER SCHEDULE ENTITLED 'TRAFFIC REGULATION MEASURES, ETC'; THE TRAFFIC REGULATION (CLEARWAYS AND PROHIBITIONS) PLANS, THE CLASSIFICATION OF ROADS PLAN AND THE DE-TRUNKING PLANS.

- LEGEND:
-  THE SCHEME (SHOWN FOR ILLUSTRATIVE PURPOSES)
 -  PROPOSED NATIONAL SPEED LIMIT ON DUAL CARRIAGEWAY AND SLIP ROADS (70MPH)
 -  PROPOSED NATIONAL SPEED LIMIT ON SINGLE CARRIAGEWAY ROAD (60MPH)
 -  PROPOSED 50MPH SPEED LIMIT
 -  PROPOSED 40MPH SPEED LIMIT
 -  PROPOSED 30MPH SPEED LIMIT
 -  VARIABLE SPEED LIMIT
 -  EXISTING PUBLIC RIGHT OF WAY
 -  PARISH BOUNDARY
 -  CHAINAGE (MEASURED DISTANCE ALONG THE SCHEME LENGTH)



SUBMITTED FOR DEVELOPMENT CONSENT ORDER APPLICATION	AV	TH	OCT. 2018	P02
Revision Details	By	Check	Date	Suffix

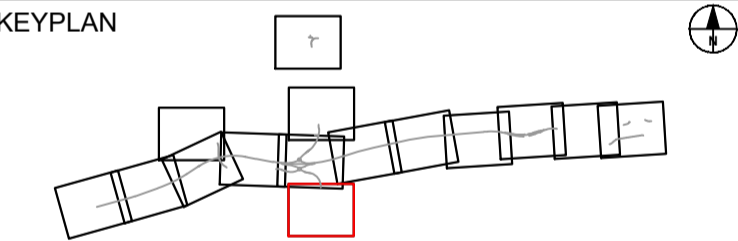


Purpose of Issue	DCO APPLICATION
Project Title	A303 Amesbury to Berwick Down
Drawing Title	TRAFFIC REGULATION MEASURES PLANS (SPEED LIMITS) REGULATION 5(2)(o) SHEET 14 OF 15
Highways England Project Office Temple Quay House 2 The Square, Temple Quay Bristol, BS1 6HA Scale @ A1	
1:2500	
Application Document Number	Rev
TR010025 - 2.10	P02



- NOTES:
1. ALL DIMENSIONS ARE IN METRES UNLESS NOTED OTHERWISE.
 2. THESE TRAFFIC REGULATION MEASURES (SPEED LIMITS) PLANS SHOULD BE READ IN CONJUNCTION WITH OTHER PLANS AND APPLICATION DOCUMENTS, IN PARTICULAR THE DEVELOPMENT CONSENT ORDER SCHEDULE ENTITLED TRAFFIC REGULATION MEASURES, ETC.; THE TRAFFIC REGULATION (CLEARWAYS AND PROHIBITIONS) PLANS, THE CLASSIFICATION OF ROADS PLAN AND THE DE-TRUNKING PLANS.

- LEGEND:
- THE SCHEME (SHOWN FOR ILLUSTRATIVE PURPOSES)
 - PROPOSED NATIONAL SPEED LIMIT ON DUAL CARRIAGEWAY AND SLIP ROADS (70MPH)
 - PROPOSED NATIONAL SPEED LIMIT ON SINGLE CARRIAGEWAY ROAD (60MPH)
 - PROPOSED 50MPH SPEED LIMIT
 - PROPOSED 40MPH SPEED LIMIT
 - PROPOSED 30MPH SPEED LIMIT
 - VARIABLE SPEED LIMIT
 - EXISTING PUBLIC RIGHT OF WAY
 - PARISH BOUNDARY
 - CHAINAGE (MEASURED DISTANCE ALONG THE SCHEME LENGTH)



SUBMITTED FOR DEVELOPMENT CONSENT ORDER APPLICATION	AV	TH	OCT. 2018	P02
Revision Details	By	Check	Date	Suffix



Purpose of Issue
DCO APPLICATION

Project Title
**A303
Amesbury to Berwick Down**

Drawing Title
**TRAFFIC REGULATION
MEASURES PLANS
(SPEED LIMITS)
REGULATION 5(2)(o)
SHEET 15 OF 15**

Highways England Project Office
Temple Quay House
2 The Square, Temple Quay
Bristol, BS1 6HA
Scale @ A1
1:2500

Application Document Number
TR010025 - 2.10

Rev
P02