

A303 Amesbury to Berwick Down

TR010025

5.1 Consultation Report Appendix

Appendix C: Development of the Statement of Community Consultation (SoCC)

APFP Regulation 5(2)(q)

Planning Act 2008

Infrastructure Planning (Applications: Prescribed
Forms and Procedure) Regulations 2009

October 2018



THIS PAGE HAS INTENTIONALLY BEEN LEFT BLANK

Appendix C Development of the Statement of Community Consultation (SoCC)

Contents	Page
C1: Correspondence with Wiltshire Council regarding draft SoCC	3
C2: Copy of the draft SoCC provided to local authorities	6
C3: Response from Wiltshire Council on draft SoCC	17
C4: Letter from Highways England to Wiltshire Council detailing how feedback on first draft of SoCC has been addressed	20
C5: SoCC submitted to Wiltshire Council for consultation, and related correspondence	24
C6: Letter and e-mail from Wiltshire Council with their response to consultation on SoCC, 18 December 2017	38
C7: Schedule of comments received from Wiltshire Council on draft SoCC with Highways England's consideration of the comments	44
C8: Published statement of Community Consultation (SoCC)	50
C9: List of recipients who were notified of SoCC correspondence and corresponding emails	64
C10: Letter and email to Wiltshire Council regarding omitted Stonehenge Trader advert	74
C11: Letter from Wiltshire Council regarding omitted Stonehenge Trader advert, 2 October 2018	84

THIS PAGE HAS INTENTIONALLY BEEN LEFT BLANK

C1 Correspondence with Wiltshire Council regarding draft SoCC

Email and letter to Wiltshire Council outlining the draft Statement of Community Consultation (SoCC) approach, 19 and 17 October 2017

From: Day, Jacqueline [<mailto:Jacqueline.Day@highwaysengland.co.uk>]
Sent: 19 October 2017 12:55
To: 'Roberts, Dave' <Dave.Roberts@wiltshire.gov.uk>; 'Jones, Karen' <Karen.Jones@wiltshire.gov.uk>
Cc: Eastgate, Anna <Anna.Eastgate@macegroup.com>
Subject: SoCC Draft for review.

Dave

Further to our conversation yesterday, please find attached the letter and draft SoCC for comment.

Once we have all comments back from you and Karen, we shall then consider them, and issue you with the formal SoCC.

Kind regards
Jacqui

Jacqueline Day Senior Stakeholder and Communications Manager
Tel: 0300 4704157
Mobile: 07712 403257



Wilshire Council
County Hall
Bythesea Road
Trowbridge
Wiltshire
BA14 8JN

17th October 2017

Dear Sirs,

Re: A303 Stonehenge – Amesbury to Berwick Down

Thank you for arranging to meet with us to discuss the above.

We are currently working towards our statutory consultation phase of the project and anticipate that the consultation period will run from 5 February 2018 to 3 April 2018. As part of the formal process, we are required to produce a Statement of Community Consultation (SoCC) and consult with the Council on it to inform what should be included within it.

The purpose of writing is to advise that we intend to commence the formal 28 day consultation on the SoCC pursuant to Section 47 of the Planning Act 2008 at the beginning of November 2017. In the intervening period, we would like to seek your informal comments on the current draft to enable us to consider any feedback you may have at this stage. With this in mind, we would be pleased to receive any comments or observations you have on or before Thursday 26 October 2017.

In reviewing the document, there are a couple of issues on which we would appreciate your specific feedback as follows:-

1. We anticipate following a similar format to the informal consultation which took place between January 2017 and March 2017. The list of locations is included in the SoCC where there were eight venues with ten events, one at each location with an additional event being held at each of Manor Barn and Antrobus House. If the Council has any further suggestions for suitable locations, we would be happy to give that further consideration.
2. Hard to Reach Groups – we are particularly interested in ensuring the consultation is accessible to all. With this in mind, there will be a varied range of materials in

Page 1 of 2

Registered office Bridge House, 1 Walnut Tree Close, Guildford GU1 4LZ
Highways England Company Limited registered in England and Wales number 09346363



different formats to assist people understand the project. However, to ensure they engage with the consultation, we are approaching some GP surgeries to ascertain if they would be prepared to have the consultation booklet and feedback form in the surgery during the consultation period. We are also considering whether to approach the local Job Centres in the vicinity of the project. Whilst there is no guarantee they will be prepared to support the consultation in this way, we would value any feedback you have in this regard with a particular focus on hard to reach.

3. We are intending to put the consultation booklet and feedback form in other 'pop-up' locations and would welcome any suggestions from the Council as to suitable sites.
4. With regard to visitors, we have made an approach to the Stonehenge Visitors' Centre with a view to undertaking some form of consultation activity there whether it be a 'pop-up' location to obtain the visitors' views for the duration of the consultation or a specific event
5. The Consultation Zone included within the SoCC is still subject to final sign off. This is the area which was used for the purposes of the earlier consultation. A final consultation zone will be included within the formal consultation on the SoCC but we would welcome your comments in the meantime.
6. As the proposal is wholly within the administrative area of Wiltshire Council, we are not required to formally consult any neighbouring authorities as to the content of the SoCC. However, working with our stakeholders and in particular the affected local authorities is important to us and therefore we had intended to consult the neighbouring authorities of Hampshire, Somerset and Dorset on an informal basis. We would be grateful if you could provide us with your views as to whether you would prefer to co-ordinate a response from those authorities or whether we should make a direct approach to them through the contacts we already have.

Of course, we welcome any comments you have on the SoCC, the above are just some matters on which we would specifically request your feedback.

Yours sincerely,

Page 2 of 2

Registered office Bridge House, 1 Walnut Tree Close, Guildford GU1 4LZ
Highways England Company Limited registered in England and Wales number 09346363



C2 Copy of the draft SoCC provided to the local authority, 27 September 2017

A303 Stonehenge - Amesbury to Berwick Down

Statement of Community Consultation (SoCC)

Introduction

Highways England is inviting feedback on its planned upgrade and improvements to the A303 between Amesbury and Berwick Down (the Scheme). The purpose of this document, known as the Statement of Community Consultation (SoCC), is to set out how Highways England will consult the community more widely about its proposals for the Scheme. The SoCC provides details of where further information can be obtained or viewed and how comments and representations on the proposal can be made.

The Application

The Scheme is classed as a nationally significant infrastructure project (NSIP) under the Planning Act 2008 (PA 2008). As such Highways England is required to make an application for a Development Consent Order (DCO) to construct and operate the Scheme. Highways England intends to make its application by Autumn 2018. The DCO application will be submitted to the Planning Inspectorate who will examine the application and make a recommendation to the Secretary of State for Transport, who will then make a decision as to whether the Scheme should proceed.

A National Policy Statement (NPS) is a document published by government which sets out the objectives and policies for the development of types of infrastructure. It provides the policy framework for the Secretary of State to make a decision on DCO applications. The NPS for National Networks applies to the development of NSIPs on the national road and rail networks in England. The NPS for National Networks is available on the Government's website:

<https://www.gov.uk/government/publications/national-policy-statement-for-national-networks>

Under the PA 2008, Highways England is required to consult on its proposals prior to the submission of the DCO application. This pre-application consultation is an important opportunity to provide feedback on the proposal, and as part of the examination process, the Planning Inspectorate will consider whether the consultation has been adequate. Highways England has prepared this SoCC in accordance with section 47 of the PA 2008 and has consulted with Wiltshire Council about the plans to consult the local community and more widely, and has taken its views into account. Feedback from the consultation will be recorded and carefully considered by Highways England in developing its proposals for the Scheme.

More information about the Planning Inspectorate and the Planning Act 2008 can be found on the Planning Inspectorate's National Infrastructure Planning Portal website: <https://infrastructure.planninginspectorate.gov.uk/> or by calling them on 0303 444 5000

The Scheme

Highways England is proposing to upgrade eight miles of single carriageway road to dual carriageway on the A303 trunk road between Amesbury and Berwick Down in Wiltshire. The

The key features of the Scheme are:

- A new free-flowing, high-quality dual carriageway;
- A twin bore tunnel of at least 1.8 miles in length underneath part of the Stonehenge and Avebury World Heritage Site (WHS) ;
- A new junction to the east of the WHS between the A303 and A345 accommodating free-flowing traffic movements between both roads;
- A new junction to the west of and outside the WHS accommodating free flowing A303 and A360 traffic movements as well as a link to Winterbourne Stoke;
- A new bypass to the north of the village of Winterbourne Stoke including a viaduct over the Till Valley;
- De-trunking of the existing A303 and improvements to the local road network.

In line with this aim, Highways England has set out four broad objectives:

- Economic growth – In combination with other schemes on the route, to enable growth in jobs and housing by providing a free flowing and reliable connection between the South East and the South West peninsula.
- Transport – To create a high-quality route that resolves current and predicted traffic problems and improves links between London and the South West.
- Environment and community – To contribute to the enhancement of the historic landscape within the WHS, to improve biodiversity along the route and to provide a positive legacy to communities adjoining the road.
- Cultural heritage – To contribute to the conservation and enhancement of the WHS by improving access both within and to the site.

Consultation

A consultation was undertaken between January and March 2017 on proposed options for the Scheme. The consultation culminated in a preferred route being announced in September 2017. More details are available in the *A303 Stonehenge, Amesbury to Berwick Down: Moving forward – the preferred route*, a copy of which is available here:

www.highways.gov.uk/a303stonehenge/consultation

Since that consultation and the announcement of the preferred route in September 2017, the design has been developed further and Highways England is now able to present the design in more detail and seek further views on the Scheme. Highways England is holding an eight week public consultation, starting on **Monday 5 February 2018** and ending on **Tuesday 3 April 2018**. The consultation will focus on the development of the preferred route. The consultation materials will provide information on the proposed layout, tunnel section, junctions and access arrangements, including any design changes since the preferred route announcement and the reasons for them.

The Scheme is an Environmental Impact Assessment Development (EIA Development) as defined by the Infrastructure Planning (Environmental Impact Assessment) Regulations 2017 (the EIA Regulations). An Environmental Statement will be submitted as part of the DCO application and, in accordance with the EIA Regulations, the Preliminary Environmental Information Report (PEIR) will form part of the consultation material. The PEIR will present environmental information collated and it will explain the likely environmental effects of the Scheme known at the time of the consultation. It will also outline the mitigation measures that are expected to be implemented in order to minimise any negative effects. Highways England will continue to develop the Environmental Statement and mitigation measures which will be submitted as part of the DCO application and incorporated into the design of the Scheme.

All feedback received during the consultation period will be considered and will influence, where possible, further refinements to the Scheme and the approach to environmental mitigation.

Highways England will be using a range of methods during the consultation period to ensure that the local community and other interested parties have an opportunity to view and comment on the proposals. This will involve:

Method	Detail
Statutory public consultation events	<p>Statutory public consultation events will be held at the following dates, times and locations</p> <p>The Manor Barn High St, Winterbourne Stoke, SP3 4SZ</p> <p>Antrobus House 39 Salisbury Rd, Amesbury, SP4 7HH</p> <p>Shrewton Village Hall Recreation Ground, The Hollow, Shrewton, SP3 4JY</p> <p>Avon Valley College Recreation Rd, Durrington, SP4 8HH</p> <p>Larkhill Primary School</p>

	<p>Wilson Road, Larkhill, SP4 8QB</p> <p>The Guildhall, Salisbury The Market Place, Salisbury, SP1 1JH</p> <p>Grove Hall The Grove Building, Church Street, Mere, BA12 6DS</p> <p>Society of Antiquaries Burlington House, Piccadilly, London, W1J 0BE</p> <p>Highways England will have consultation materials, information displays and staff available throughout these events to explain the proposals and answer any questions.</p> <p>They will be arranged at times to ensure that everyone in the community has an opportunity to attend, including hard to reach groups, for example between 14.00 and 20.00 weekdays and 12.00 – 17.00 on Saturdays.</p>
Publication of consultation materials	<p>Including the consultation booklet, feedback form, a series of plans including a Scheme layout plan, the Preliminary Environmental Information Report, background documents, copies of consultation events boards and this SoCC on the Scheme webpage: www.highways.gov.uk/a303stonehenge</p>
Consultation booklet and feedback form pop-up locations	<p>A consultation Booklet providing information about the Scheme and the issues being consulted on will be delivered to homes and businesses in the Consultation Zone shown at Appendix 1 and to those registered as interested parties. Copies will also be made available at a number of static information points, including GP surgeries within the consultation zone, listed below.</p>
Ad Hoc meetings	<p>Meetings with residents, businesses and interest groups about either the Scheme in general or particular issues can be arranged upon request to Highways England using the published email address, postal address or telephone number</p>
Media	<p>The DCO application and the consultation will be advertised in one or more local newspapers (<i>Stonehenge Trader, Wiltshire Gazette and Herald, Salisbury Journal, Wiltshire Times</i>) for at least two successive weeks and once in a national newspaper (<i>The Times and The Guardian</i>) and the <i>London Gazette</i>. In addition adverts will be placed in local newspapers at the launch of the consultation and</p>

	reminders will be placed ahead of the exhibition events. Press releases providing details of the consultation and how the community and road users can participate will be issued.
Social media	The consultation will be advertised on Twitter: @A303Stonehenge Facebook: A303 Stonehenge

Deposit of these consultation materials

Available to view between Monday 5 February 2018 and Tuesday 3 April 2018 at the following community facilities:

Please note that viewing locations may be closed on bank holidays.

Location	Opening times
Amesbury Library Smithfield Street, Amesbury, Salisbury SP4 7AL	Monday to Friday 10.00 to 16.00 Saturday 10.00 to 12.00
Tidworth Leisure Centre Nadder Road, Tidworth SP9 7QW	Monday to Friday 09.00 to 21.00 Saturday 08.00 to 17.00 Sunday 08.00 to 20.00
Salisbury Library Market Place, Salisbury SP1 1BL	Monday 10.00-19.00 Tuesday & Friday 09.00 to 19.00 Wednesday, Thursday & Saturday 09.00 to 17.00
Wiltshire Council Offices County Hall, Bythesea Road, Trowbridge BA14 8JN	Monday to Friday 09.00 to 17.00
Wilton Library South Street, Wilton SP2 0JS	Tuesday 10.00 to 19.00 Thursday & Friday 10.00 to 17.00 Saturday 10.00 to 13.00
Devizes Community Hub and Library Sheep Street, Devizes SN10 1DL	Monday to Friday 08.30 to 17.30
Marlborough Library, 91 High Street, Marlborough SN8 1HD	Monday 14.00 to 19.00 Tuesday closed, Wednesday & Friday 09.30 to 17.00 Thursday 09.30 to 19.00 Saturday 09.30 to 13.00
Warminster Library, 3 Horseshoe Walk, Warminster BA12 9BT	Monday 10.00 to 19.00, Tuesday & Friday 09.30 to 17.00 Wednesday 09.30 to 12.30 Thursday 09.30 to 19.00

Westbury Library, Westbury House, Edward Street, BA13 3BD	<p>Saturday 09.30 to 16.00 Sunday closed</p> <p>Monday 14.00 to 19.00, Tuesday & Friday 09.30 to 17.00 Wednesday closed Thursday 09.30 to 19.00 Saturday 09.30 to 13.00 Sunday closed</p>
---	---

Consultation booklet and feedback form pop-up locations:

Location	Opening times
The Barcroft Medical Practice Barcroft Medical Centre Amesbury, Wiltshire, SP4 7DL	Monday to Friday 08.00 to 13.00 and 14.00 to 18.30 Weekends Closed
St Melor Surgery Edwards Road, Amesbury, Salisbury SP4 7LT	Monday to Friday 08.00 to 18.00 Weekends Closed
Larkhill Medical Centre Willoughby Road, Larkhill, Salisbury, Durrington, Wiltshire SP4 8QY	Monday, Tuesday, Thursday & Friday 08:00 to 12:30 and 13:30 to 16:30 Wednesday 08:00 to 12:30 and 14:45 to 16:30 Weekends Closed
Till Orchard Surgery, High Street, Shrewton, Salisbury SP3 4BZ	Monday to Tuesday 08.00 to 13.00 and 14.00 to 18.30 Wednesday 08.00 to 13.00 Thursday & Friday 08.00 to 13.00 and 14.00 to 18.30 Weekends Closed
Cross Plain Health Centre High Street, Shrewton, Salisbury SP3 4DB	Monday & Tuesday 08:30 to 13.00 and 14.00 to 18.00 Wednesday 08:30 to 13.00 Thursday & Friday 08.00 to 13.00 and 14.00 to 18.00 Weekends Closed

Next steps

- All of the consultation materials will be available to view free of charge on the Scheme website or at the locations listed above. Copies of the consultation materials may be requested from Highways England using the published email address, postal address or telephone number. A CD can be provided free of charge and paper copies of the consultation leaflet and SoCC will be supplied free of charge. Paper copies of other consultation materials are priced at £15 for the PEIR, £10 for an A3 copy of the consultation event boards and £7.50 for an A1 copy of the Scheme layout plan. Prices include VAT at 20% and UK postage. Please contact Highways England for further details regarding payment methods
- Following the consultation period, Highways England will produce a consultation report to summarise the views and comments received and outline how these views and comments have been taken into consideration in developing the Scheme. Highways England will send this report to the Planning Inspectorate as part of the DCO application. The Planning Inspectorate will decide whether the DCO application meets the required standards to proceed to examination, and as part of this will determine whether the pre-application consultation has been adequate.

Making your comments

Comments on the proposals can be made by:

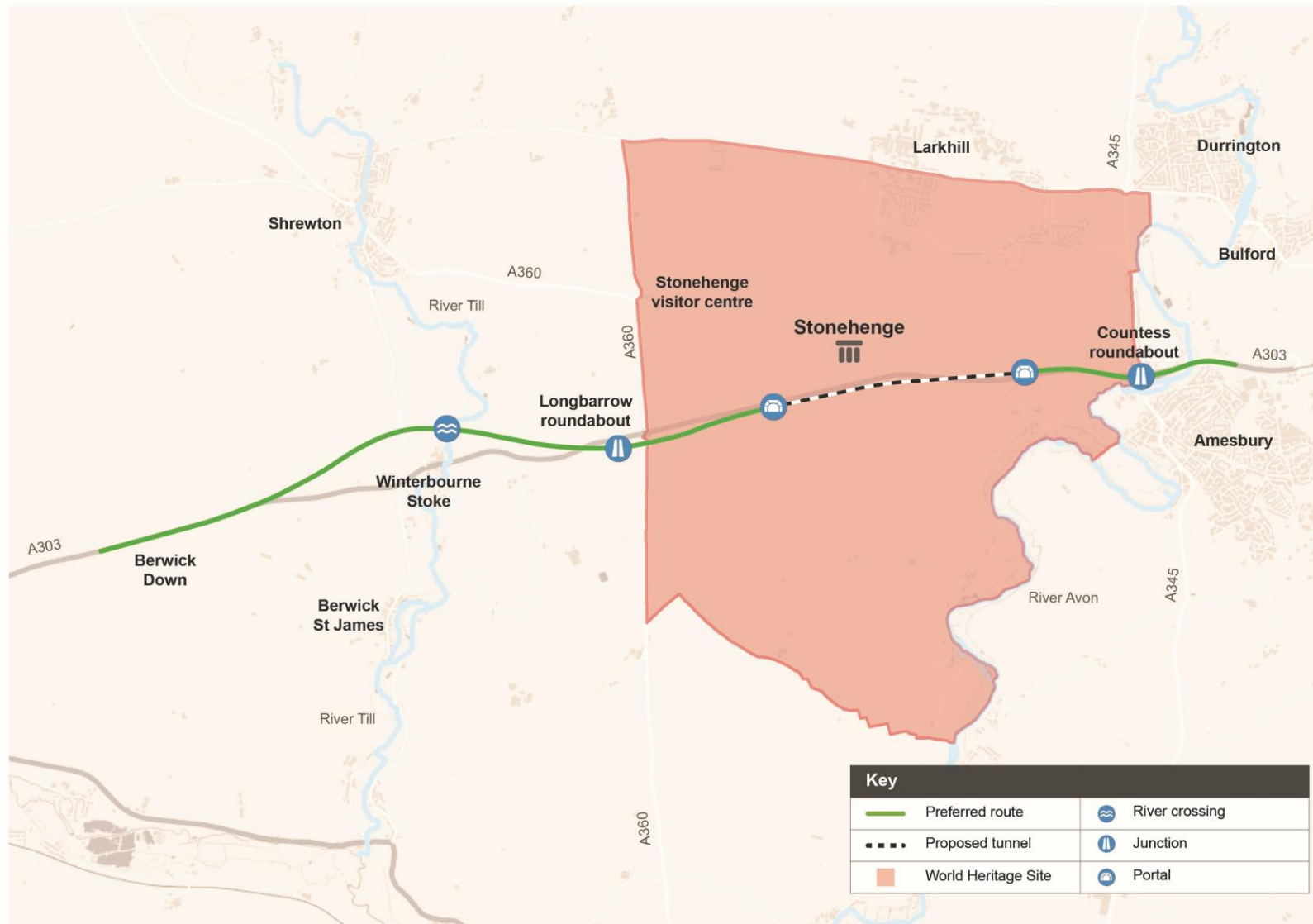
- Completing the consultation response form. This is enclosed with the consultation booklet and is also available to complete online on the Scheme webpage at: www.highways.gov.uk/A303stonehenge
- Alternatively a paper copy can be printed from the webpage or requested free of charge by using the published contact information
- Emailing the Scheme at: a303stonehenge@highwaysengland.co.uk
- Writing to us at: Freepost, A303 Stonehenge Consultation

If you have any questions about this consultation please contact the project team using any of these details or by calling 0300 123 500

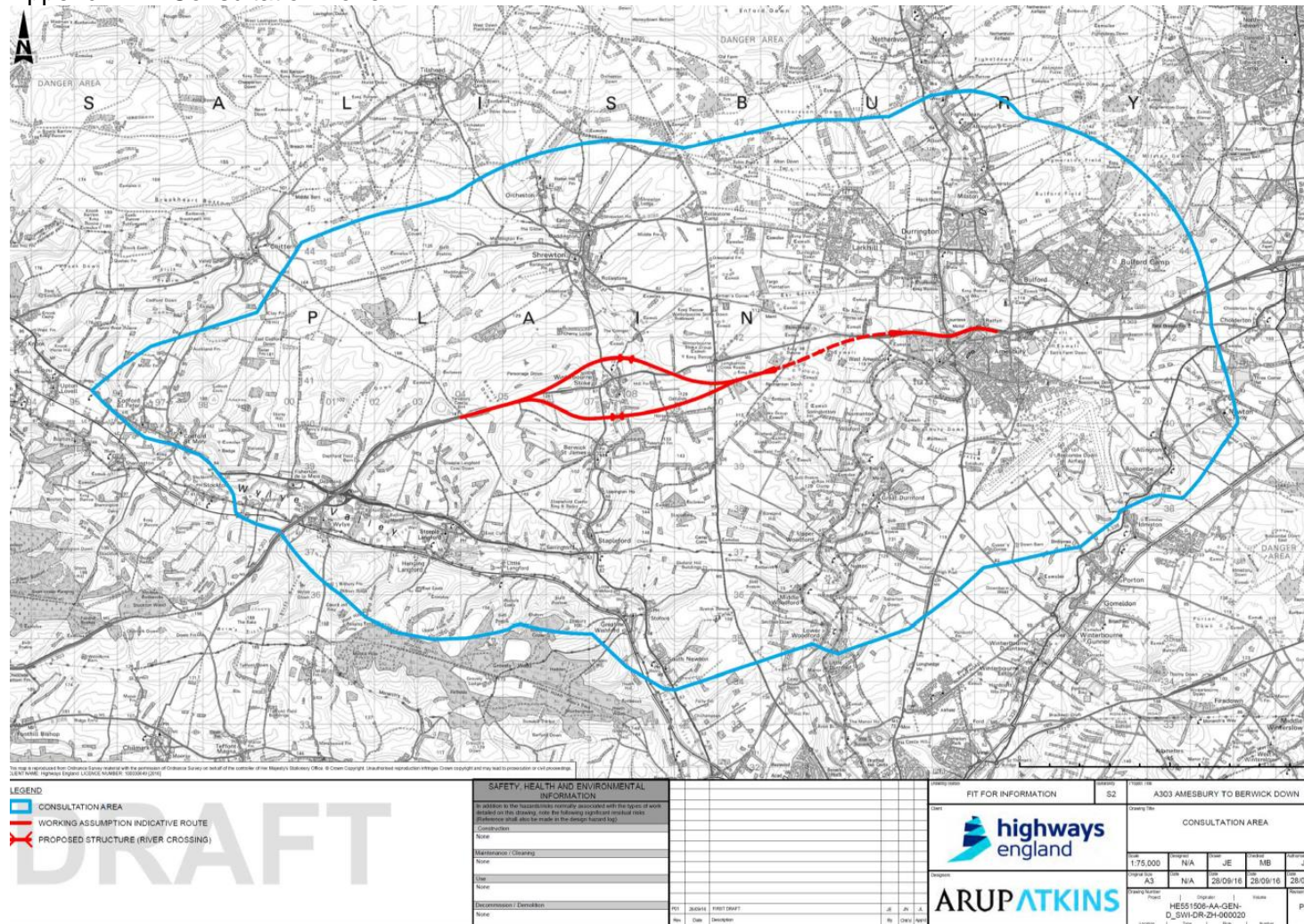
The deadline for all responses to be **received** is **Tuesday 3 April 2018**.

Date: (**Date of SoCC**)

Appendix 1



Appendix 2 – Consultation Zone



C3 Response from Wiltshire Council on draft SoCC, 2 November 2017

From: Jones, Karen [REDACTED]
Sent: 02 November 2017 15:13
To: Day, Jacqueline
Cc: Khansari, Parvis; Roberts, Dave
Subject: A303 - Draft SoCC

Jacqui,

Thank you for the opportunity to comment on the draft Statement of Community Consultation for the A303 scheme. Please find our initial comments attached.

We look forward to receiving the revised draft SoCC in due course.

Kind Regards,

Karen

Karen Jones

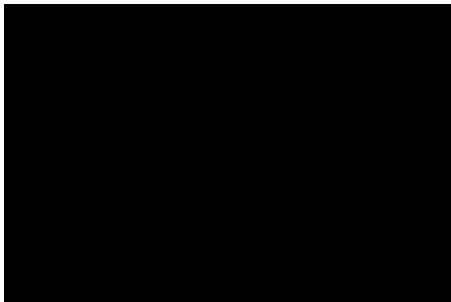
Business Analyst

[REDACTED]

Programme Office | Wiltshire Council | County Hall | Trowbridge | BA14 8JN

[REDACTED]

2nd November 2017



Highways and Transport
County Hall
Bythesea Road
Trowbridge
Wiltshire
BA14 8JN

Your ref:

Our ref:

Dear Ms Day

Re: A303 Stonehenge – Amesbury to Berwick Down, Draft Statement of Community Consultation (SoCC)

Thank you for the opportunity to comment on the draft Statement of Community Consultation (SoCC) for the A303 Amesbury to Berwick Down A303 scheme received on 19th October 2017.

Wiltshire Council has considered the documentation and has the following comments to make:

- All references to the Planning Act 2008 should be revised to state the Planning Act 2008 (as amended)

Size and Coverage of Consultation Exercise:

- There are 18 separate Area Boards across Wiltshire. Please consider holding a consultation for the South West Wiltshire Area Board (suggested venue the Nadder Centre in Tisbury or a suitable venue in Mere), the Westbury Area Board (suggested venue the Laverton Hall or Leigh Park Community Centre) and the Warminster Area Board
- The Wiltshire Council OCM websites could also be used to sign post people to the on-line consultation material and to notify people of dates, times and venues for the consultation events
- Consideration should also be given to utilising County Hall in Trowbridge and the History Centre in Chippenham for consultation display materials and possible use as a deposit point for consultation responses
- You may also wish to consider having information available at local farmers or regular area markets within the consultation zone
- Please consider holding more consultation events at the weekend to enable people who commute during the week to actively participate in the consultation

The Design and Format of Consultation Materials:

- Following the initial public consultation for the scheme, the Council were notified of difficulties from some residents in submitting more detailed written responses or letters to the consultation rather than use the questionnaire format. Please consider how options of how people respond to the consultation could be expanded to enable these detailed responses to be more readily received

Issues which could be Covered in Consultation Materials:

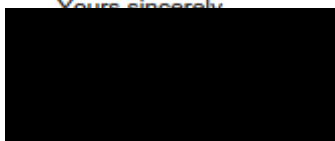
- Please ensure that detailed technical information is available for review by interested residents within the consultation period

Local Bodies and Representative Groups who should be Consulted:

- Consideration should be given to sending posters, leaflets and consultation event timings to all Town and Parish Councils. It may also be worthwhile to request that they forward this information onto all Village Halls, as many hard to reach groups meet in these venues at various times and dates
- With respect to hard to reach young people, it's noted that Avon Valley College has been identified for engagement. You may wish to consider Stonehenge School as an additional educational establishment

We look forward to receiving the updated draft SoCC for formal consideration pursuant to Section 47 of the Planning Act 2008 (as amended).

Yours sincerely,



Parvis Khansari
Associate Director
Highways and Transport

Direct line: 01225 713340
Email: parvis.khansari@wiltshire.gov.uk

C4 Letter from Highways England to Wiltshire Council detailing how feedback on first draft of SoCC has been address, 23 November 2017



Karen Jones
Business Analyst
Wiltshire Council
County Hall
Bythesea Road
Trowbridge
BA14 8JN

Jacqueline Day
Communications and Stakeholder Lead
Stonehenge
Highways England
Temple Quay House
2 The Square
Temple Quay
Bristol
BS1 6HA

Phone: 0300 123 5000
Email: Jacqueline.day@highwaysengland.co.uk
A303Stonehenge@highwaysengland.co.uk

23rd November 2017

Dear Ms Jones,

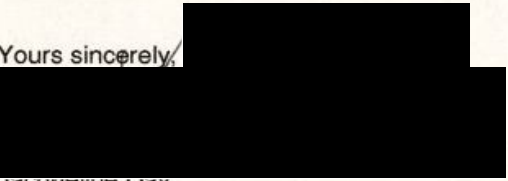
**A303 STONEHENGE – Amesbury to Berwick Down
Response to Wiltshire Council comments on the draft SoCC**

I write with regard to the above matter and further to your helpful letter of 2 November 2017.

Please find attached a table setting out your comments and Highways England's response to them.

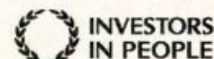
Please do get in touch if you wish to discuss them.

Yours sincerely,


Jacqueline Day
Senior Stakeholder and Communications Manager

Page 1 of 1

Registered office Bridge House, 1 Walnut Tree Close, Guildford GU1 4LZ
Highways England Company Limited registered in England and Wales number 09346363



Number	Category	Wiltshire Council Comments	Highways England Response
1.	General	Reference to the Planning Act 2008 should include 'as amended'	Agreed
2.	Size & Coverage of Consultation	There are 18 separate Area Boards across Wiltshire. Please consider holding a consultation for the South West Wiltshire Area Board (suggested venue the Nadder Centre in Tisbury or a suitable venue in Mere), the Westbury Area Board (suggested venue the Laverton Hall or Leigh Park Community Centre) and the Warminster Area Board	The SoCC refers to meetings with the Council and Members as well as community/area forums. Highways England will be happy to attend an event upon request.
3.	Size & Coverage of Consultation	The Wiltshire Council OCM websites (community blogs) could also be used to sign post people to the on-line consultation material and to notify people of dates, times and venues for the consultation events	This seems like a good idea and Highways England will liaise with Dave Roberts from the Council to facilitate this.
4.	Size & Coverage of Consultation	Consideration should also be given to utilising County Hall in Trowbridge and the History Centre in Chippenham for consultation display materials and possible use as a deposit point for consultation responses	It is the intention to put some form of signposting material in County Hall as well as the deposit documents in the library. Contact will be made with the History Centre in Chippenham with a view to having some consultation booklets and response forms available
5.	Size & Coverage of Consultation	You may also wish to consider having information available at local farmers or regular area markets within the consultation zone	Flyers and posters will be displayed in communities in the vicinity of the Scheme. Dave Roberts has provided a list of Parish Clerks to enable us to do this

6.	Size & Coverage of Consultation	Please consider holding more consultation events at the weekend to enable people who commute during the week to actively participate in the consultation	There are scheduled to be four weekend events which is double the weekend events held for the consultation that began in January 2017. The consultation events will be held between 2-8pm on weekdays and 11 to 5pm on Saturdays.
7.	Design & Format of Materials	Following the initial public consultation for the scheme, the Council were notified of difficulties from some residents in submitting more detailed written responses or letters to the consultation rather than use the questionnaire format. Please consider how options of how people respond to the consultation could be expanded to enable these detailed responses to be more readily received	Highways England has not been made aware of complaints. Responses last time were received by email and in writing by post. Where more space was required on the response form, additional sheets were made available at the consultation event. Highways England will commit to including some text on the form which enables a separate sheet to be used and submitted
8.	Issues for consultation period	Please ensure that detailed technical information is available for review by interested residents within the consultation period	Highways England can confirm that this will be the case and information deposit locations will be checked throughout the consultation period
9.	Consultation Groups & Bodies	Consideration should be given to sending posters, leaflets and consultation event timings to all Town and Parish Councils. It may also be worthwhile to request that they forward this information onto all Village Halls, as many hard to reach groups meet in these venues at various times and dates	Highways England will provide a commitment to do this
10.	Consultation Groups & Bodies	With respect to hard to reach young people, it's noted that Avon Valley	Subject to the school agreeing, Highways England will provide a commitment to undertaking a short presentation in assembly

		College has been identified for engagement. You may wish to consider Stonehenge School as an additional educational establishment	with the permission of the school and providing consultation booklets and response forms to capture the views of students
--	--	---	---

C5 SoCC submitted to Wiltshire Council for review and related correspondence, 23 November 2017

From: A303 ABD Project Management Office (PMO)

[REDACTED]

Sent: 23 November 2017 12:47

To: Jones, Karen

[REDACTED]

Cc: Roberts, Dave

[REDACTED]

Subject: A303 Stonehenge SOCC for Wiltshire Council 2/2

Importance: High

Good afternoon Karen,

Please find attached covering letter and the Statement of Community Consultation on which we are seeking your formal views.

Kind regards,

Lewis Somerville, A303 Stonehenge PMO

Highways England | Temple Quay House | 2 The Square, Temple Quay | Bristol | BS1 6HA

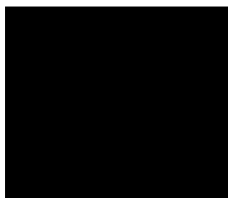
[REDACTED]



[REDACTED]

[REDACTED]

[REDACTED]



Jacqueline Day
Communications and Stakeholder Lead
Stonehenge
Highways England
Temple Quay House
2 The Square
Temple Quay
Bristol
BS1 6HA

Phone: 0300 123 5000
Email: Jacqueline.day@highwaysengland.co.uk
A303Stonehenge@highwaysengland.co.uk

23rd November 2017

Dear Ms Jones,

A303 STONEHENGE – Amesbury to Berwick Down
The Planning Act 2008 Section 43 and 47 - Statement of Community Consultation

I write with regard to the above matter and further to our recent exchange of correspondence regarding the Statement of Community Consultation (SoCC). I have sent a response to the Council in relation to the informal comments received under separate correspondence.

Highways England is now formally writing to consult Wiltshire Council in respect of the SoCC for the above Scheme. In this regard, the 28 day consultation period will commence on Friday 24th November 2017 and end on 22nd December 2017, being the last date by which I would appreciate your formal response.

I attach herewith the SoCC upon which we are seeking your formal views and would make the following comments:

1. The area of consultation shown on the plan attached to the SoCC is currently being considered and it is anticipated there will be a minor extension to the areas covered to the north, east and west extents. When the plan is updated, I will send an updated version to you.
2. The venues for the consultation events set out in the SoCC are currently being booked and are subject to availability however, Highways England is committing to the number of events in those locations and will write to you again once confirmation has been received.

Page 1 of 2

Registered office Bridge House, 1 Walnut Tree Close, Guildford GU1 4LZ
Highways England Company Limited registered in England and Wales number 09346363



INVESTORS
IN PEOPLE

Should you require any further information or wish to discuss this matter further, I would be happy to meet with you at a convenient time to you. Please do get in touch.

Yours sincerely,

Jacqueline Day
Senior Stakeholder and Communications Manager

A303 Stonehenge - Amesbury to Berwick Down

Statement of Community Consultation (SoCC)

HE551506-AMW-VSS-SW _ZZ_ZZ_ZZ-RP-ZM-0002

Date: 22 November 2017

Version: 1.0

Introduction

Highways England is publishing this Statement of Community Consultation (SoCC) in connection with its proposed upgrade and improvements to the A303 between Amesbury and Berwick Down (the Scheme). The purpose of this document is to set out how Highways England will consult the community about its proposals for the Scheme. The SoCC provides details of where further information can be obtained or viewed and how comments and representations on the proposal can be made.

The Application

The Scheme is classed as a nationally significant infrastructure project (NSIP) under the Planning Act 2008 as amended (PA 2008) and Highways England is publishing this statement under Section 47 of the PA 2008. Highways England has consulted Wiltshire Council, the local authority responsible for the area where the Scheme will be built, about its plans to consult the community and hastaken the Council's views into account in developing this statement.

Highways England is required to make an application for a Development Consent Order (DCO) to construct and maintain the Scheme and intends to make its application by Autumn 2018. The DCO application will be submitted to the Planning Inspectorate who will examine the application and make a recommendation to the Secretary of State for Transport, who will then make a decision as to whether the Scheme should proceed.

Government policy relating to the development of the national road network is set out in the National Networks National Policy Statement (NNNPS). This provides the framework for DCO applications to be considered against. The NNNPS is available on the Government's website:

<https://www.gov.uk/government/publications/national-policy-statement-for-national-networks>

Under the PA 2008, Highways England is required to consult on its proposals prior to the submission of the DCO application. This pre-application consultation is an important opportunity to provide feedback on the proposal, and, as part of the examination process, the Secretary of State will consider whether the consultation has been adequate. Feedback from the consultation will be recorded and carefully considered by Highways England in developing its proposals for the Scheme.

More information about the Planning Inspectorate and the PA 2008 can be found on the Planning Inspectorate's National Infrastructure Planning Portal website: <https://infrastructure.planninginspectorate.gov.uk/> or by calling them on 0303 444 5000

The Scheme

Highways England is proposing to upgrade eight miles (13km) of mostly single carriageway road to dual carriageway on the A303 trunk road between Amesbury and Berwick Down in Wiltshire.

The key features of the Scheme are:

- A new free-flowing, high-quality dual carriageway;
- A twin bore tunnel of a minimum 2.9km (1.8 miles) in length within the Stonehenge, Avebury and Associated Sites World Heritage Site (WHS);
- A new junction between the A303 and A345 accommodating free-flowing traffic movements between both roads;
- A new junction between the A303 and A360 outside the WHS accommodating free-flowing traffic movements between the two roads as well as providing a link to Winterbourne Stoke;
- A new bypass to the north of the village of Winterbourne Stoke including a viaduct over the Till Valley;
- De-trunking of sections of the existing A303 and the A360 and improvements to the local road network.

The Scheme has four broad objectives:

- Transport – To create a high quality reliable route between the South East and the South West that meets the future needs of traffic.
- Economic growth – To enable growth in jobs and housing by providing a free-flowing and reliable connection between the South East and the South West.
- Cultural heritage – To help conserve and enhance the World Heritage Site and to make it easier to reach and explore.
- Environment and community – To improve biodiversity and provide a positive legacy for nearby communities.

Consultation

In accordance with Section 47 of the PA 2008, Highways England is consulting people living in the vicinity of the proposed scheme.

An options consultation was undertaken between 12 January 2017 and 5 March 2017 on proposed route options for the Scheme. The consultation was followed by the announcement of the preferred route in September 2017. More details of this consultation and the preferred route are available at:

www.highways.gov.uk/a303stonehenge/consultation

Since the 2017 consultation and the announcement of the preferred route, the Scheme has been developed further. Highways England is now able to present the proposals in more detail and seek further views on the Scheme.

To do this Highways England is holding an eight week public consultation, starting on **Monday 5 February 2018** and ending on **Tuesday 3 April 2018**. The consultation will focus on the development of the details of the preferred route. The consultation materials will provide information on the proposed layout, tunnel, junctions and access arrangements.

The Scheme is an Environmental Impact Assessment Development (EIA Development) as defined by the Infrastructure Planning (Environmental Impact Assessment) Regulations 2017 (the EIA Regulations). An Environmental Statement will be submitted as part of the DCO application and, in accordance with the EIA Regulations, the Preliminary Environmental Information Report (PEI Report) will form part of the consultation material. The PEI Report will present environmental information collated and it will explain the likely environmental effects of the Scheme as they are understood at the time of the consultation. It will also outline the mitigation measures that are expected to be implemented in order to avoid or reduce those effects. Highways England will continue to develop the Environmental Statement and mitigation measures which will be submitted as part of the DCO application and incorporated into the design of the Scheme.

Feedback received during the consultation period will be considered and will inform further refinements to the Scheme and the approach to environmental mitigation.

Highways England will be using a range of methods or channels during the consultation period to ensure that the local community and other interested parties have an opportunity to view and comment on the proposals. This will involve:

Method	Detail	Dates and times
Public Information Events	Public information events will be held during the following dates, times and locations:	

	Avon Valley College Recreation Rd, Durrington, SP4 8HH	Tuesday 6 February 2018 at 14.00 to 20.00
	Larkhill Primary School Wilson Road, Larkhill, SP4 8QB	Wednesday 7 February 2018 at 14.00 to 20.00
	Antrobus House 39 Salisbury Rd, Amesbury, SP4 7HH	Friday 9 February 2018 at 14.00 to 20.00 and Saturday 10 February 2018 at 11.00 to 17.00
	Avebury [venue to be identified]	Thursday 22 February 2018 at 14.00 to 20.00
	Shrewton Village Hall Recreation Ground, The Hollow, Shrewton, SP3 4JY	Saturday 24 February 2018 at 11.00 to 17.00
	Grove Hall The Grove Building, Church Street, Mere, BA12 6DS	Wednesday 28 February 2018 at 14.00 to 20.00
	Society of Antiquaries Burlington House, Piccadilly, London, W1J 0BE	Thursday 1 March 2018 at 12.00 to 20.00
	The Guildhall, Salisbury The Market Place, Salisbury, SP1 1JH	Saturday 3 March 2018 at 11.00 to 17.00
	The Manor Barn High St, Winterbourne Stoke, SP3 4SZ	Friday 9 March 2018 at 14.00 to 20.00 and Saturday 10 March 2018 at 11.00 to 17.00
	<p>Highways England will have consultation materials, information displays and staff available throughout these events to explain the proposals and answer any questions.</p> <p>The public will be informed of the exhibitions through channels including advertisements in appropriate local newspapers, via our website, the media and direct communications.</p>	

	<p>A similar event will be held on Monday 5 February 2018 at [TBC] for statutory consultees.</p> <p>Response forms will be available at the exhibition events for members of the public to record their comments and these can either be left with the project team and/or sent back separately via the Freepost address noted below or online using the Scheme website</p>	
Scheme website	<p>A full summary of the scheme, copies of the supporting project documents and a feedback form will be provided on a dedicated project website: www.highways.gov.uk/a303stonehenge</p>	
Scheme leaflet	<p>A scheme leaflet and details of the planned public information events will be delivered to homes and businesses in the locality of the Scheme. See Appendix 2 for the plan of the distribution area</p>	
Council and community area forum briefings	<p>Local council officers and members and community/area forums within close proximity to the Scheme will be offered briefings to discuss the proposal</p>	
Stakeholder forum briefings and groups	<p>When invited, and where possible to do so, the scheme team will attend meetings of local community groups affected by the Scheme</p>	
Ad Hoc meetings	<p>Meetings with residents, businesses and interest groups about either the Scheme in general or particular issues can be arranged upon request to Highways England using the published email address, postal address or telephone number</p>	
Media	<p>The consultation will be advertised in the following local newspapers (<i>Stonehenge Trader</i>, <i>Wiltshire Gazette and Herald</i>, <i>Salisbury Journal</i>, <i>Wiltshire Times</i>) for at least two successive weeks and once in the following national newspapers (<i>The Times and The Guardian</i>) and the <i>London Gazette</i>. In addition adverts will be placed in local newspapers ahead the launch of the consultation and reminders will be placed ahead of the public information events. Press releases providing details of the consultation and how the community and other interested parties can participate will be issued.</p>	
Social media	<p>The consultation will be advertised on Twitter: @A303Stonehenge</p>	

Deposit of consultation materials

Information about the proposed Scheme including this updated SoCC, the PEI Report, the consultation booklet, response form, policy guidance documents and other relevant technical documents will be available online and will be added to throughout the course of the project. They will be available to view free of charge between Monday 5 February 2018 and Tuesday 3 April 2018 at the following community facilities:

(Please note that viewing locations may be closed on bank holidays).

Location	Opening times
Amesbury Library Smithfield Street, Amesbury, Salisbury SP4 7AL	Monday to Friday 10.00 to 16.00 Saturday 10.00 to 12.00
Tidworth Leisure Centre Nadder Road, Tidworth SP9 7QW	Monday to Friday 09.00 to 21.00 Saturday 08.00 to 17.00 Sunday 08.00 to 20.00
Salisbury Library Market Place, Salisbury SP1 1BL	Monday 10.00-19.00 Tuesday & Friday 09.00 to 19.00 Wednesday, Thursday & Saturday 09.00 to 17.00
Wiltshire Council Offices County Hall, Bythesea Road, Trowbridge BA14 8JN	Monday to Friday 09.00 to 17.00
Wilton Library South Street, Wilton SP2 0JS	Tuesday 10.00 to 19.00 Thursday & Friday 10.00 to 17.00 Saturday 10.00 to 13.00
Devizes Community Hub and Library Sheep Street, Devizes SN10 1DL	Monday to Friday 08.30 to 17.30
Marlborough Library, 91 High Street, Marlborough SN8 1HD	Monday 14.00 to 19.00 Tuesday closed, Wednesday & Friday 09.30 to 17.00 Thursday 09.30 to 19.00 Saturday 09.30 to 13.00
Warminster Library, 3 Horseshoe Walk, Warminster BA12 9BT	Monday 10.00 to 19.00, Tuesday & Friday 09.30 to 17.00 Wednesday 09.30 to 12.30 Thursday 09.30 to 19.00 Saturday 09.30 to 16.00 Sunday closed

Westbury Library, Westbury House, Edward Street, BA13 3BD	Monday 14.00 to 19.00, Tuesday & Friday 09.30 to 17.00 Wednesday closed Thursday 09.30 to 19.00 Saturday 09.30 to 13.00 Sunday closed
---	--

In addition, consultation booklets and response forms will be available throughout the consultation period at the following locations:

Location	Opening times
Stonehenge Visitors Centre, Near Amesbury, Wiltshire SP4 7DE	Every day 09.30 to 17.00
The Barcroft Medical Practice, Barcroft Medical Centre, Amesbury, Wiltshire SP4 7DL	Monday to Friday 08.00 to 13.00 and 14.00 to 18.30 Weekends Closed
St Melor Surgery, Edwards Road, Amesbury, Salisbury SP4 7LT	Monday to Friday 08.00 to 18.00 Weekends Closed
Larkhill Medical Centre, Willoughby Road, Larkhill, Salisbury, Durrington, Wiltshire SP4 8QY	Monday, Tuesday, Thursday & Friday 08:00 to 12:30 and 13:30 to 16:30 Wednesday 08:00 to 12:30 and 14:45 to 16:30 Weekends Closed
Till Orchard Surgery, High Street, Shrewton, Salisbury SP3 4BZ	Monday to Tuesday 08.00 to 13.00 and 14.00 to 18.30 Wednesday 08.00 to 13.00 Thursday & Friday 08.00 to 13.00 and 14.00 to 18.30 Weekends Closed
Cross Plain Health Centre, High Street, Shrewton, Salisbury SP3 4DB	Monday & Tuesday 08:30 to 13.00 and 14.00 to 18.00 Wednesday 08:30 to 13.00 Thursday & Friday 08.00 to 13.00 and 14.00 to 18.00 Weekends Closed

Next steps

- All of the consultation materials will be available to view free of charge on the Scheme website or at the library locations listed above. Copies of the consultation materials may be requested from Highways England using the published email address, freepost address or telephone number. Paper copies of the consultation booklet, response form and SoCC will be supplied free of charge however there may be a charge for paper copies of other consultation materials. Please contact Highways England for further details.

Following the consultation period, Highways England will review all of the responses received and produce a consultation report. This report will summarise the views and comments received and outline how these have been taken into consideration in further developing the Scheme. Highways England will send this report to the Planning Inspectorate as part of the DCO application.

Making your comments

Comments on the proposals can be made by:

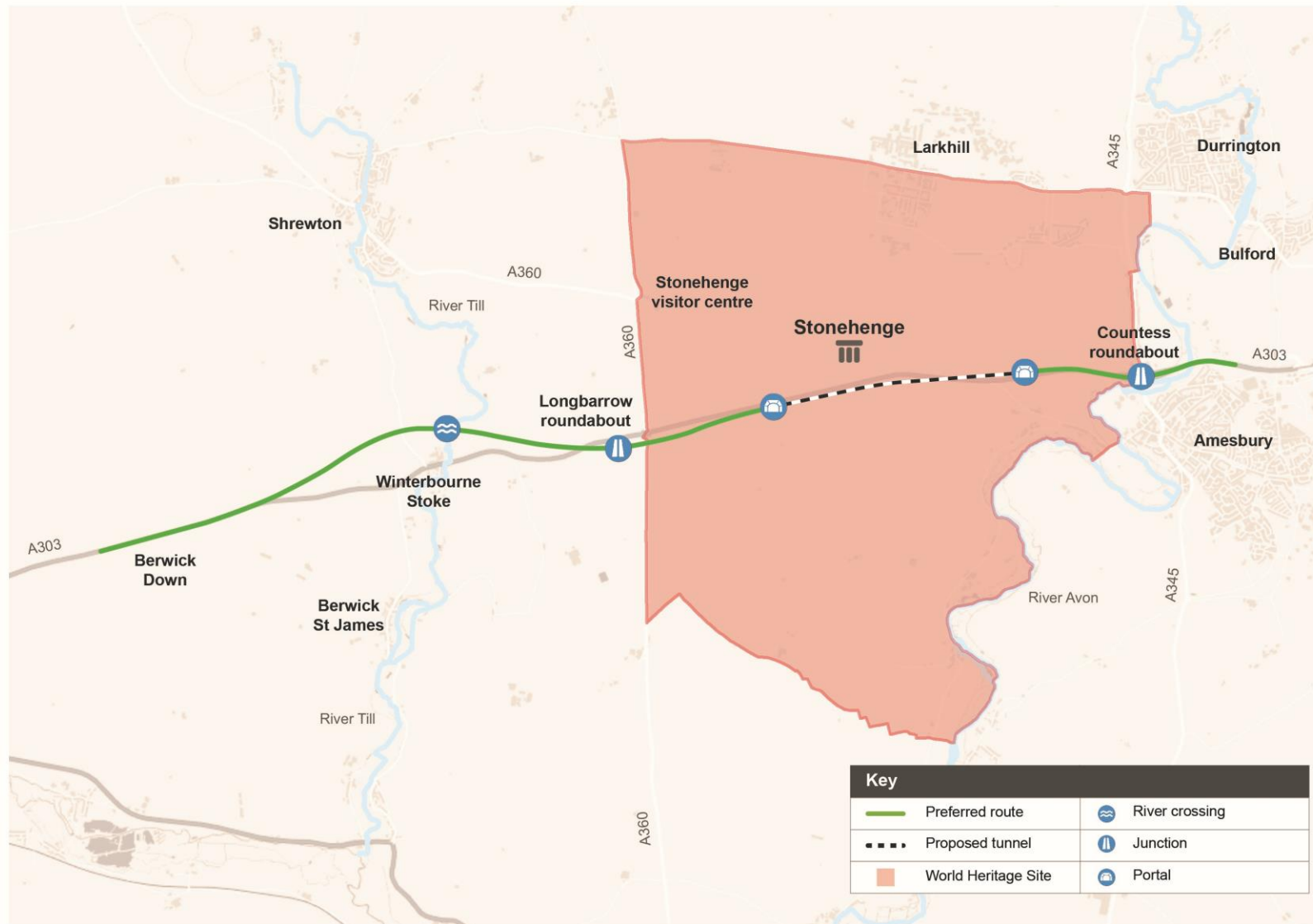
- Completing the consultation response form. This is enclosed with the consultation booklet which will be available at the public information events and deposit points and is also available to complete online on the Scheme webpage at: www.highways.gov.uk/A303stonehenge
- Alternatively a paper copy can be printed from the webpage or requested free of charge by using the published contact information:
 - Emailing the Scheme at: a303stonehenge@highwaysengland.co.uk
 - Writing to us at: Freepost, A303 Stonehenge Consultation

If you have any questions about this consultation, please contact the project team using any of these details or by calling 0300 123 500

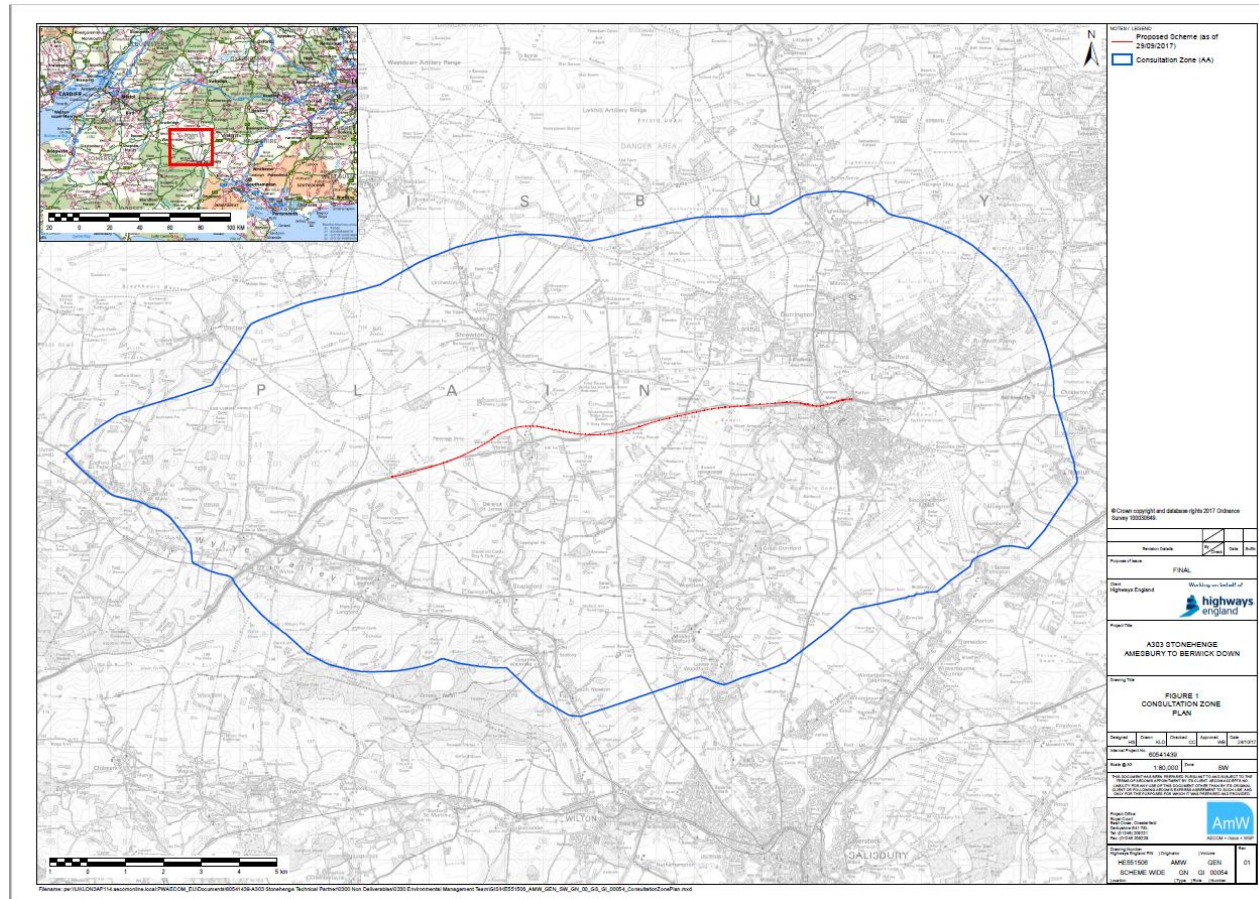
The deadline for all responses to be **received** is 23.59 on **Tuesday 3 April 2018**.

Date: (**Date of SoCC**)

Appendix 1



Appendix 2 – Area of Consultation



C6 Letter and e-mail from Wiltshire Council with their response to consultation on SoCC, 18 December 2017

From: [REDACTED]
To: [REDACTED]
Subject: RE: A303 Stonehenge SOCC for Wiltshire Council 2/2

From: Jones, Karen [REDACTED]
Sent: 18 December 2017 13:38
To: A303 ABD Project Management Office (PMO) [REDACTED]
Cc: Khansari, Parvis [REDACTED]; Cain, Frank [REDACTED]
Subject: RE: A303 Stonehenge SOCC for Wiltshire Council 2/2

Dear Lewis,

Thank you for the opportunity to comment on the Statement of Community Consultation for the A303 Amesbury to Berwick Down scheme. Please find attached our response.

Please do not hesitate to contact us if you have any questions or require further information.

Kind Regards,
Karen

Karen Jones
Business Analyst

18th December 2017

Mr Lewis Somerville
A303 Stonehenge PMO



Highways and Transport
County Hall
Bythesea Road
Trowbridge
Wiltshire
BA14 8JN

Your ref:

Our ref:

Dear Mr Somerville

Re: A303 Stonehenge – Amesbury to Berwick Down, Statement of Community Consultation (SoCC)

Thank you for the opportunity to comment on the revised Statement of Community Consultation (SoCC) for the A303 Amesbury to Berwick Down A303 scheme received on 23rd November 2017.

Receipt of the updated Consultation venues and distribution points, received on 6th December 2017, is acknowledged. As previously notified, the Council is content for our buildings and libraries to be utilised as deposit points.

The tabular response to our informal comments is also appreciated, however it is noted that whilst Highways England's response appears to agree with the majority of points made, the SoCC has not been amended accordingly. The Council believes that these agreed changes should be reflected in the SoCC to provide clear evidence at the outset of the depth of penetration for the community consultation. This will help to mitigate any allegations, which may be received, stating that affected communities / people were not made aware of the consultation. Please see comments in the updated table below:

Number	Category	Wiltshire Council Comments	Highways England Response	Wiltshire Council Response
1.	General	Reference to the Planning Act 2008 should include 'as amended'	Agreed	The reference to the Planning Act 2008 at the bottom of page 2 should also read the "Planning Act 2008 as amended".
2.	Size & Coverage of Consultation	There are 18 separate Area Boards across Wiltshire. Please consider holding a consultation for the South West Area Board (suggested venue the Nadder Centre in Tisbury or a suitable venue in Mere), the Westbury Area Board (suggested venue the Laverton Hall or Leigh Park Community Centre) and the Warminster Area Board	The SoCC refers to meetings with the Council and Members as well as community / area forums. Highways England will be happy to attend an event upon request	It is noted that this has not been expressly covered within the revised SoCC. The text currently reads, "within close proximity to the Scheme" (page 7), however those within South West Wiltshire, Westbury and Warminster will be directly impacted by the A303 corridor improvements and therefore, we urge you to consider holding a consultation event in these localities
3.	Size & Coverage of Consultation	The Wiltshire Council OCM websites (community blogs) could also be used to sign post people to the on-line consultation material and to notify people of dates, times and venues for the consultation events	This seems like a good idea and Highways England will liaise with Dave Roberts from the Council to facilitate this	It is noted that this has not been expressly stated within the revised SoCC. Please amend the text at the bottom of page 6 to accommodate this
4.	Size & Coverage of Consultation	Consideration should also be given to utilising County Hall in Trowbridge and the History Centre in Chippenham for consultation display materials and possible use as a deposit point for consultation responses	It is the intention to put some form of signposting material in County Hall as well as the deposit documents in the library. Contact will be made with the History Centre in Chippenham with a view to having some consultation booklets and response forms available	Thank you for the inclusion of Wiltshire Council Offices at County Hall within the revised SoCC. However, it is noted that there is no mention of the History Centre in Chippenham. Please amend the text on pages 8 and 9 accordingly

Number	Category	Wiltshire Council Comments	Highways England Response	Wiltshire Council Response
5.	Size & Coverage of Consultation	You may also wish to consider having information available at local farmers or regular area markets within the consultation zone	Flyers and posters will be displayed in communities in the vicinity of the Scheme. Dave Roberts has provided a list of Parish Clerks to enable us to do this	The SoCC states that the scheme leaflet will be delivered to homes and businesses in the locality of the Scheme (page 7). Please amend this to also include community facilities and village halls
6.	Size & Coverage of Consultation	Please consider holding more consultation events at the weekends to enable people who commute during the week to actively participate in the consultation	There are scheduled to be four weekend events which is double the weekend events held for the consultation that began in January 2017. The consultation events will be held between 2-8pm on weekdays and 11 to 5pm on Saturdays	Noted
7.	Design & Format of Materials	Following the initial public consultation for the scheme, the Council were notified of difficulties from some residents in submitting more detailed written response or letters to the consultation rather than use the questionnaire format. Please consider how options of how people respond to the consultation could be expanded to enable these more detailed responses to be more readily received	Highways England has not been made aware of complaints. Responses last time were received by email and in writing by post. Where more space was required on the response form, additional sheets were made available at the consultation event. Highways England will commit to including some text on the form which enables a separate sheet to be used and submitted	Whilst it is acknowledged that responses were received by email and in writing by post during the last consultation, the feedback which we received indicated that the correct method for doing so was unclear. Therefore, please amend the text under Making your comments on page 10 to state that written responses can also be submitted via email and by post and provide the correct addresses for doing so

Number	Category	Wiltshire Council Comments	Highways England Response	Wiltshire Council Response
8.	Issues for Consultation Period	Please ensure that detailed technical information is available for review by interested residents within the consultation period	Highways England can confirm that this will be the case and information deposit locations will be checked throughout the consultation period	It is acknowledged that in the Deposit of consultation materials section on page 8, it states that "other relevant technical documents" will be made available. However, the Council is seeking assurance that all supporting technical information, referenced within technical reports, will be made available upon request and would like the text to be amended to incorporate this
9.	Consultation Groups & Bodies	Consideration should be given to sending posters, leaflets and consultation event timings to all Town and Parish Councils. It may also be worthwhile to request they forward this information onto all Village Halls, as many hard to reach groups meet in these venues at various times and dates	Highways England will provide a commitment to do this	It is noted that this has not been expressly covered within the revised SoCC. Please revise the text accordingly
10.	Consultation Groups & Bodies	With respect to hard to reach young people, it's noted that Avon Valley College has been identified for engagement. You may wish to consider Stonehenge School as an additional educational establishment	Subject to the school agreeing, Highways England will provide a commitment to undertaking a short presentation in assembly with the permission of the school and providing consultation booklets and response forms to capture the views of students	It is noted that this has not been expressly stated within the revised SoCC. Please revise the text accordingly

In addition to the above, upon further review of the documentation, the Council would like to make the following comments:

SoCC Reference	SoCC Text	Wiltshire Council Comment
Template guidance at bottom of page 2	Under Section 37 of the Planning Act 2008 requires promoters on Nationally Significant Infrastructure Projects (NSIP) must detail how they intend to comply with the consultation requirements set out in sections 42, 47 and 48 of the Act	Suggest wording is changed as follows: "Under Section 37 of the Planning Act 2008 as amended, promoters on Nationally Significant Infrastructure Projects (NSIP) are required to detail how they intend to comply with the consultation requirements set out in sections 42, 47 and 48 of the Act"
Last bullet point in key features of the Scheme on page 4	De-trunking of sections of the existing A303 and A360 and improvements to the local road network	Please remove reference to A360. This will be subject to realignment and not de-trunking
Fourth paragraph on page 5	To do this Highways England is holding an eight week public consultation, starting on Monday 5 February 2018 and ending on Tuesday 3 April 2018	Whilst it is acknowledged that Highways England have their own consultation procedures, the Council would commit to a 12-week consultation period for projects of this nature in accordance with its compact agreement with voluntary organisations and Town / Parish councils. Please consider an extension to the consultation period
Fourth paragraph on page 5	The consultation materials will provide information on the proposed layout, tunnel, junctions and access arrangements	The Council would expect the consultation to also include off-site mitigation works, for example the works at Rolleston cross roads
Scheme leaflet section on page 7	A scheme leaflet and details of the planned public information events will be delivered to homes and businesses in the locality of the Scheme	Please consider amending the wording to reference when the information will be distributed within the community
First bullet point in Next steps on page 10	Please contact Highways England for further details	Please consider providing the appropriate contact details here, or a link to those referenced below in the Making your comments section
Making your comments section on page 10	Scheme webpage address and email address	Please consider providing hyperlinks for the electronic communication addresses contained within this section

C7 Schedule of comments received from Wiltshire Council on draft SoCC with Highways England's consideration of the comments

The below table outlines the responses received on the draft SoCC from Wiltshire Council on 2 November 2017 and comments on the revised SoCC on 18 December 2018. It also shows how these comments were considered in the final version of the SoCC.

Category of Comment / Section of SoCC	Suggestion or comments made by Wiltshire Council (2 November 2017)	Regard had to suggestion by Highways England (23 November 2017)	Response from Wiltshire Council to SoCC consultation (18 December 2018)	How Highways England considered the comments on the SoCC consultation
General	Reference to the Planning Act 2008 should include 'as amended'	Agreed	The reference to the Planning Act 2008 at the bottom of page 2 should also read the "Planning Act 2008 as amended".	The first reference to the Planning Act 2008 within the final version of the SoCC includes "as amended". Subsequent references to the Act are written as "PA 2008" (page 2).
Size and Coverage of Consultation	There are 18 separate Area Boards across Wiltshire. Please consider holding a consultation for the South West Wiltshire Area Board (suggested venue the Nadder Centre in Tisbury or a suitable venue in Mere), the Westbury Area Board (suggested venue the Laverton Hall or Leigh Park Community Centre) and the Warminster Area Board	The SoCC refers to meetings with the Council and Members as well as community/area forums. Highways England will be happy to attend an event upon request.	It is noted that this has not been expressly covered within the revised SoCC. The text currently reads, "within close proximity to the Scheme" (page 7), however those within South West Wiltshire, Westbury and Warminster will be directly impacted by the A303 corridor improvements and therefore, we urge you to consider holding a consultation event in these localities.	The final version of the SoCC lists the public information events which were held during the consultation period, including at Warminster Civic Centre (23 February 2018), the Laverton Hall in Westbury (27 February 2018), and Mere Lecture Hall in Mere (also in south west Wiltshire) (1 March 2018 and rescheduled for 13 April 2018).
Size and Coverage of Consultation	The Wiltshire Council OCM websites (community blogs) could also be used to sign post people to the on-line consultation material and to notify people of dates, times and venues for the consultation events	Highways England will liaise with the Council to facilitate this	It is noted that this has not been expressly stated within the revised SoCC. Please amend the text at the bottom of page 6 to accommodate this	Text at the bottom of page 5 in the final SoCC states: "We will also provide information about the consultation to the Wiltshire Council 'Our Community Matters' for them to include on the community blog pages".

Category of Comment / Section of SoCC	Suggestion or comments made by Wiltshire Council (2 November 2017)	Regard had to suggestion by Highways England (23 November 2017)	Response from Wiltshire Council to SoCC consultation (18 December 2018)	How Highways England considered the comments on the SoCC consultation
Size and Coverage of Consultation	Consideration should also be given to utilising County Hall in Trowbridge and the History Centre in Chippenham for consultation display materials and possible use as a deposit point for consultation responses	It is the intention to put some form of signposting material in County Hall as well as the deposit documents in the library. Contact will be made with the History Centre in Chippenham with a view to having some consultation booklets and response forms available	Thank you for the inclusion of Wiltshire Council Offices at County Hall within the revised SoCC. However, it is noted that there is no mention of the History Centre in Chippenham. Please amend the text on pages 8 and 9 accordingly.	Wiltshire and Swindon History Centre in Chippenham is included in the 'Deposit of consultation materials' section of the final SoCC as a place to view documentation (page 8).
Size and Coverage of Consultation	You may also wish to consider having information available at local farmers or regular area markets within the consultation zone	Flyers and posters will be displayed in communities in the vicinity of the Scheme. Dave Roberts has provided a list of Parish Clerks to enable us to do this	The SoCC states that the scheme leaflet will be delivered to homes and businesses in the locality of the Scheme (page 7). Please amend this to also include community facilities and village halls	The final SoCC (page 5) states "The public will be informed of the information events through channels including advertisements in appropriate local newspapers, via the website, the media and direct communications. "
Size and Coverage of Consultation	Please consider holding more consultation events at the weekend to enable people who commute during the week to actively participate in the consultation	There are scheduled to be four weekend events which are double the weekend events held for the consultation that began in January 2017. The consultation events will be held between 2-8pm on weekdays and 11 to 5pm on Saturdays	Noted	No further action was required in the final SoCC.
Design and Format of Materials	Following the initial public consultation for the scheme, the Council were	Highways England has not been made aware of complaints. Responses	Whilst it is acknowledged that responses were received by email and in writing by post during the	Text within the final SoCC (page 9) was updated accordingly with the line "written responses can then be submitted by email and by post using the scheme

Category of Comment / Section of SoCC	Suggestion or comments made by Wiltshire Council (2 November 2017)	Regard had to suggestion by Highways England (23 November 2017)	Response from Wiltshire Council to SoCC consultation (18 December 2018)	How Highways England considered the comments on the SoCC consultation
	notified of difficulties from some residents in submitting more detailed written responses or letters to the consultation rather than use the questionnaire format. Please consider how options of how people respond to the consultation could be expanded to enable these detailed responses to be more readily received	last time were received by email and in writing by post. Where more space was required on the response form, additional sheets were made available at the consultation event. Highways England will commit to including some text on the form which enables a separate sheet to be used and submitted	last consultation, the feedback which we received indicated that the correct method for doing so was unclear. Therefore, please amend the text under Making your comments on page 10 to state that written responses can also be submitted via email and by post and provide the correct addresses for doing so	email address or freepost address"
Issues for Consultation Period	Please ensure that detailed technical information is available for review by interested residents within the consultation period	Highways England can confirm that this will be the case and information deposit locations will be checked throughout the consultation period	It is acknowledged that in the Deposit of consultation materials section on page 8, it states that "other relevant technical documents" will be made available. However, the Council is seeking assurance that all supporting technical information, referenced within technical reports, will be made available upon request and would like the text to be amended to incorporate this	Text within the final SoCC (page 7) states: "...other relevant documents will be available online and at the deposit locations below. The information may be added to throughout the consultation. They will be available to view free of charge..."
Consultation Groups and Bodies	Consideration should be given to sending posters, leaflets and consultation event timings to all Town and Parish Councils. It may also be worthwhile to	Highways England will provide a commitment to do this	It is noted that this has not been expressly covered within the revised SoCC. Please revise the text accordingly.	Text has been updated within the final SoCC (page 6) to include "Copies will also be provided to the Parish Clerks for inclusion on community notices boards". The final SoCC (page 5) also states "The public will

Category of Comment / Section of SoCC	Suggestion or comments made by Wiltshire Council (2 November 2017)	Regard had to suggestion by Highways England (23 November 2017)	Response from Wiltshire Council to SoCC consultation (18 December 2018)	How Highways England considered the comments on the SoCC consultation
	request that they forward this information onto all Village Halls, as many hard to reach groups meet in these venues at various times and dates			be informed of the information events through channels including advertisements in appropriate local newspapers, via the website, the media and direct communications. “
Consultation Groups and Bodies	With respect to hard to reach young people, it's noted that Avon Valley College has been identified for engagement. You may wish to consider Stonehenge School as an additional educational establishment	Subject to an agreement from the School, Highways England will provide a commitment to providing a short presentation, providing consultation and response forms to capture the views of students	It is noted that this has not been expressly stated within the revised SoCC. Please revise the text accordingly	The final SoCC included the statement “we will offer to attend Stonehenge School with a view to providing information about the consultation” (page 6)
Template guidance at bottom of page 2	-	-	Suggest wording is changed as follows: “Under Section 37 of the Planning Act 2008 as amended, promoters on Nationally Significant Infrastructure Projects (“NSIP”) are required to detail how they intend to comply with the consultation requirements set out in sections 42, 47 and 48 of the Act”	The final SoCC made reference to Highways England's duty under Section 47 of the PA 2008 to prepare a SoCC. No reference of Section 37 required in the SoCC.
Last bullet point in key features of the Scheme on page 4	-	-	Please remove reference to A360. This will be subject to realignment and not de-trunking	Reference to the A360 remains in the revised SoCC (page 2). There is no mention of de-trunking in the final SoCC

Category of Comment / Section of SoCC	Suggestion or comments made by Wiltshire Council (2 November 2017)	Regard had to suggestion by Highways England (23 November 2017)	Response from Wiltshire Council to SoCC consultation (18 December 2018)	How Highways England considered the comments on the SoCC consultation
Fourth paragraph on page 5	-	-	Whilst it is acknowledged that Highways England have their own consultation procedures, the Council would commit to a 12-week consultation period for projects of this nature in accordance with its compact agreement with voluntary organisations and Town / Parish councils. Please consider an extension to the consultation period	<p>The consultation period (originally 8 weeks) was double the minimum statutory period, and as such was considered as being adequate time for people to review information and provide feedback on the scheme.</p> <p>The consultation period was extended to 10 weeks as a consequence of adverse winter weather conditions in the Wiltshire area in March 2018 causing the postponement of the two planned public information events.</p>
Fourth paragraph on page 5	-	-	The Council would expect the consultation to also include off-site mitigation works, for example the works at Rollestone cross roads	The consultation material included modifications to Rollestone crossroads, changes to local roads east of Solstice Park junction and traffic management during construction.
Scheme leaflet section on page 7	-	-	Please consider amending the wording to reference when the information will be distributed within the community	Text within the final SoCC (page 6) stated: "A scheme leaflet and details of the planned public information events will be delivered to homes and businesses in the locality of the Scheme at the start of the consultation period. See Appendix 2 for the plan of the distribution area".
First bullet point in next steps on page 10	-	-	Please consider providing the appropriate contact details here, or a link to those referenced below in the Making your comments section	<p>Appropriate contact details and links were provided in the 'making your comments' section and the 'next steps' section of the final SoCC (page 9)</p> <p>It stated: "Please contact Highways England for further details using the email address, postal address or telephone number provided below:</p> <ul style="list-style-type: none"> By emailing:

Category of Comment / Section of SoCC	Suggestion or comments made by Wiltshire Council (2 November 2017)	Regard had to suggestion by Highways England (23 November 2017)	Response from Wiltshire Council to SoCC consultation (18 December 2018)	How Highways England considered the comments on the SoCC consultation
				A303Stonehenge@highwaysengland.co.uk <ul style="list-style-type: none"> In writing: Freepost, A303 STONEHENGE CONSULTATION By calling: 0300 123 5000
Making your comments section on page 10	-	-	Please consider providing hyperlinks for the electronic communication addresses contained within this section	Appropriate contact details and links were provided in the 'making your comments' section (www.highways.gov.uk/A303Stonehenge/consultation) and the 'next steps' section of the final SoCC (page 9). The online version of the SoCC provided hyperlinks to the relevant webpages.

C8 Published Statement of Community Consultation (SoCC)

A303 Stonehenge

Amesbury to Berwick Down

Statement of Community Consultation (SoCC)



Introduction

Highways England is publishing this Statement of Community Consultation (SoCC) in connection with its proposed upgrade to the A303 past Stonehenge between Amesbury and Berwick Down (the Scheme). The purpose of this document is to set out how Highways England will consult the local community about its proposals for the Scheme. The SoCC provides details of where further information can be obtained or viewed and how comments and representations on the proposal can be made. A plan of the Scheme can be seen in Appendix 1.

The Application

The Scheme is classed as a Nationally Significant Infrastructure Project (NSIP) under the Planning Act 2008 as amended (PA 2008) which means that Highways England is required to make an application to the Secretary of State for Transport for permission to build and operate the proposed Scheme. The permission is called a Development Consent Order (DCO). Highways England intends to submit the DCO application in autumn 2018. The Planning Inspectorate will examine the application and make a recommendation to the Secretary of State, who will then make a decision as to whether the Scheme should proceed.

Highways England has a duty under Section 47 of the PA 2008 to prepare a SoCC. Highways England has consulted Wiltshire Council, the local authority responsible for the area where the proposed Scheme would be built, about its plans to consult on the proposals and has taken the Council's views into account in developing this statement.

Government policy relating to the development of the national road network is set out in the National Policy Statement for National Networks (NPSNN). This provides the policy context for this DCO. The NPSNN is available on the Government's website:

<https://www.gov.uk/government/publications/national-policy-statement-for-national-networks>

Under the PA 2008, Highways England is required to consult on its proposals for the Scheme prior to the submission of the DCO application. This pre-application consultation is an important opportunity to provide feedback on the proposal. Feedback from the consultation will be recorded and carefully considered by Highways England in developing its proposals for the Scheme. As part of the application process, the Secretary of State will consider whether the consultation undertaken by Highways England has been adequate.

More information about the Planning Inspectorate and the PA 2008 can be found on the Planning Inspectorate's National Infrastructure Planning Portal website: <https://infrastructure.planninginspectorate.gov.uk/> or by calling them on 0303 444 5000

The Scheme

Highways England is proposing to upgrade the A303 past Stonehenge between Amesbury and Berwick Down to a dual two-lane carriageway. The Scheme is approximately 8 miles (nearly 13km) long and comprises the following key elements:

- A bypass to the north of Winterbourne Stoke with a viaduct over the Till valley;
- A new junction between the A303 and A360 to the west of and outside the Stonehenge, Avebury and Associated Sites World Heritage Site (The World Heritage Site), replacing the existing Longbarrow roundabout;
- A twin-bore tunnel at least 1.8 miles (2.9 km) long past Stonehenge;
- A new junction between the A303 and A345 at the site of the existing Countess roundabout.

The Scheme has four broad objectives:

- Transport – To create a high quality reliable route between the South East and the South West that meets the future needs of traffic.
- Economic growth – To enable growth in jobs and housing by providing a free-flowing and reliable connection between the South East and the South West.
- Cultural heritage – To help conserve and enhance the World Heritage Site and to make it easier to reach and explore.
- Environment and community – To improve biodiversity and provide a positive legacy for nearby communities.

Consultation

In accordance with Section 47 of the PA 2008, Highways England is consulting people on the Scheme proposal.

An options consultation was undertaken between 12 January 2017 and 5 March 2017 on route proposals for the Scheme. The consultation was followed by the announcement of the preferred route in September 2017. More details of this consultation and the preferred route are available at: www.highways.gov.uk/A303Stonehenge/consultation

Since the 2017 consultation and the announcement of the preferred route, the Scheme has been developed further. Highways England is now able to present the proposals in more detail and seek further views on the Scheme.

To do this Highways England is holding an eight week public consultation, starting on **Thursday 8 February 2018** and ending on **Friday 6 April 2018**. The

consultation will focus on the development of the details of the proposed Scheme. The consultation materials will provide information on the proposed layout, tunnel and junctions.

The proposed Scheme is the type of development that requires an Environmental Impact Assessment (EIA) under the Infrastructure Planning (Environmental Impact Assessment) Regulations 2017 (the EIA Regulations).

Highways England is continuing to gather environmental information and this is an ongoing process for the purposes of EIA, which will result in an Environmental Statement (ES) being produced and submitted as part of the DCO application. At this stage, a Preliminary Environmental Information Report (PEI Report) has been produced and will form part of the consultation material. The PEI Report is preliminary and the findings will be developed further in the Environmental Statement to reflect the evolution of the design of the proposed Scheme, informed by the feedback from the consultation, and the ongoing EIA process.

Feedback received during the consultation period will be considered and will inform further refinements to the Scheme and the approach to environmental mitigation.

Highways England will be using a range of methods and channels during the consultation period to ensure that the local community and other interested parties have an opportunity to view and comment on the proposals. This will include:

Method	Detail	
Public Information Events	Public information events will be held during the following dates, times and locations:	
	Location	Dates and times
	Antrobus House 39 Salisbury Rd, Amesbury, SP4 7HH	Friday 9 February 2018 at 14.00 to 20.00 and Saturday 10 February 2018 at 11.00 to 17.00
	Kennet Valley Village Hall Overton Road, Lockeridge, Marlborough, SN8 4EL	Thursday 22 February 2018 at 14.00 to 20.00
	Warminster Civic Centre, Sambourne Road, Warminster, BA12 8LB	Friday 23 February 2018 at 14.00 to 20.00
	Shrewton Village Hall Recreation Ground, The Hollow, Shrewton, SP3 4JY	Saturday 24 February 2018 at 11.00 to 17.00

	The Laverton Hall Bratton Road, Westbury, The Laverton, BA13 3EN	Tuesday 27 February 2018 at 14.00 to 20.00
	Mere Lecture Hall Salisbury Street, Mere, BA12 6HA	Thursday 1 March 2018 at 14.00 to 20.00
	The Guildhall The Market Place, Salisbury, SP1 1JH	Saturday 3 March 2018 at 11.00 to 17.00
	Society of Antiquaries Burlington House, Piccadilly, London, W1J 0BE	Thursday 8 March 2018 at 12.00 to 20.00
	The Manor Barn High Street, Winterbourne Stoke, SP3 4SZ	Friday 9 March 2018 at 14.00 to 20.00 and Saturday 10 March 2018 at 11.00 to 17.00
	Avon Valley College Recreation Road, Durrington, SP4 8HH	Tuesday 13 March 2018 at 14.00 to 20.00
	Larkhill Primary School Wilson Road, Larkhill, SP4 8QB	Wednesday 14 March 2018 at 16.00 to 20.30
	Antrobus House 39 Salisbury Rd, Amesbury, SP4 7HH	Friday 23 March 2018 at 14.00 to 20.00
<p>Highways England will have consultation materials, information displays and staff available at these events to explain the proposals and answer any questions.</p> <p>The public will be informed of the information events through channels including advertisements in appropriate local newspapers, via our website, the media and direct communications.</p> <p>Response forms will be available at the information events for members of the public to record their comments. These can either be completed and left with the project team or sent back separately instead via the Freepost address noted below, or completed and submitted online using the Scheme website.</p>		

Scheme website	A full summary of the Scheme, copies of the supporting project documents and a response form will be provided on a dedicated project website: www.highways.gov.uk/A303Stonehenge/consultation
Scheme leaflet	A scheme leaflet and details of the planned public information events will be delivered to homes and businesses in the locality of the Scheme at the start of the consultation period. See Appendix 2 for the plan of the distribution area. Copies will also be provided to the Parish Clerks for inclusion on community notice boards.
Council and community area forum briefings	Local council officers and members and community/area forums within close proximity to the Scheme will be offered briefings to discuss the proposal
Stakeholder forum briefings and groups	When invited, and where possible to do so, the scheme team will attend meetings of local community groups affected by the Scheme
Ad Hoc meetings	Meetings with residents, businesses and interest groups about either the Scheme in general or particular issues can be arranged upon request to Highways England using the published email address, postal address or telephone number
Media	<p>The consultation will be advertised in local newspapers the <i>Wiltshire Gazette and Herald</i>, <i>Salisbury Journal</i> for at least two successive weeks and once in the <i>Wiltshire Times</i> and <i>Stonehenge Trader</i> and once in the national newspapers (<i>The Times</i> and <i>The Guardian</i>) and the <i>London Gazette</i>.</p> <p>In addition adverts will be placed in local newspapers ahead of the launch of the consultation and reminders will be placed ahead of the public information events. Press releases providing details of the consultation and how the community and other interested parties can participate will be issued.</p>
Social media	<p>The consultation will be advertised on Twitter: @A303Stonehenge</p> <p>We will also provide information about the consultation to the Wiltshire Council 'Our Community Matters' for them to include on the community blog pages.</p>
Education	We will offer to attend Stonehenge School with a view to providing information about the consultation

Deposit of consultation materials

Information about the proposed Scheme including this SoCC, the PEI Report, the consultation booklet, response form and other relevant documents will be available online and at the deposit locations below. The information may be added to throughout the consultation. They will be available to view free of charge between Thursday 8 February 2018 and Friday 6 April 2018 at the following community facilities:

(Please note that the following times may be subject to change during bank holidays).

Location	Opening times
Amesbury Library Smithfield Street, Amesbury, Salisbury, SP4 7AL	Monday to Friday 10.00 to 16.00 Saturday 10.00 to 12.00
Tidworth Leisure Centre Nadder Road, Tidworth, SP9 7QW	Monday to Friday 09.00 to 21.00 Saturday 08.00 to 17.00 Sunday 08.00 to 20.00
Salisbury Library Market Place, Salisbury, SP1 1BL	Monday 10.00 to 19.00 Tuesday & Friday 09.00 to 19.00 Wednesday, Thursday & Saturday 09.00 to 17.00
Wiltshire Council Offices County Hall, Bythesea Road, Trowbridge, BA14 8JN	Monday to Friday 09.00 to 17.00
Wilton Library South Street, Wilton, SP2 0JS	Tuesday 10.00 to 19.00 Thursday & Friday 10.00 to 17.00 Saturday 10.00 to 13.00
Devizes Community Hub and Library Sheep Street, Devizes, SN10 1DL	Monday to Friday 08.30 to 17.30
Marlborough Library 91 High Street, Marlborough, SN8 1HD	Monday 14.00 to 19.00 Tuesday closed, Wednesday & Friday 09.30 to 17.00 Thursday 09.30 to 19.00 Saturday 09.30 to 13.00
Warminster Library 3 Horseshoe Walk, Warminster, BA12 9BT	Monday 10.00 to 19.00, Tuesday & Friday 09.30 to 17.00 Wednesday 09.30 to 12.30 Thursday 09.30 to 19.00 Saturday 09.30 to 16.00 Sunday closed

Westbury Library Westbury House, Edward Street, BA13 3BD	Monday 14.00 to 19.00, Tuesday & Friday 09.30 to 17.00 Wednesday closed Thursday 09.30 to 19.00 Saturday 09.30 to 13.00 Sunday closed
The Wiltshire and Swindon History Centre Cocklebury Road, Chippenham, SN15 3QN	Tuesday to Friday 09.30 to 17.30, Saturday 09.30 to 17.00 Sunday & Monday closed

In addition, consultation booklets and response forms will be available throughout the consultation period at the following locations:

Location	Opening times
Stonehenge Visitors Centre Near Amesbury, Wiltshire, SP4 7DE	Every day 09.30 to 17.00
The Barcroft Medical Practice Barcroft Medical Centre, Amesbury, Wiltshire, SP4 7DL	Monday to Friday 08.00 to 13.00 and 14.00 to 18.30 Weekends closed
St Melor Surgery Edwards Road, Amesbury, Salisbury, SP4 7LT	Monday to Friday 08.00 to 18.00 Weekends closed
Larkhill Medical Centre Willoughby Road, Larkhill, Salisbury, Durrington, Wiltshire, SP4 8QY	Monday, Tuesday, Thursday & Friday 08:00 to 12:30 and 13:30 to 16:30 Wednesday 08:00 to 12:30 and 14:45 to 16:30 Weekends closed
Till Orchard Surgery High Street, Shrewton, Salisbury, SP3 4BZ	Monday to Tuesday 08.00 to 13.00 and 14.00 to 18.30 Wednesday 08.00 to 13.00 Thursday & Friday 08.00 to 13.00 and 14.00 to 18.30 Weekends closed
Cross Plain Health Centre High Street, Shrewton, Salisbury, SP3 4DB	Monday & Tuesday 08:30 to 13.00 and 14.00 to 18.00 Wednesday 08:30 to 13.00 Thursday & Friday 08.00 to 13.00 and 14.00 to 18.00 Weekends closed

Making your comments

Comments on the proposals can be made by:

- Completing the consultation response form. This will be available at the public information events and deposit points and is also available to complete online on the Scheme webpage at:
www.highways.gov.uk/A303Stonehenge/consultation
- Alternatively a paper copy can be printed from the webpage or requested free of charge by:
 - Emailing the Scheme at:
A303Stonehenge@highwaysengland.co.uk
 - Writing to us at: Freepost, A303 STONEHENGE CONSULTATION
 - By calling 0300 123 5000

Written responses can then be submitted by email and by post using the scheme email address or freepost address set out above

If you have any questions about this consultation, please contact the project team using any of these details.

The deadline for all responses to be **received** is 23.59 on **Friday 6 April 2018**.

Next steps

- All of the consultation material will be available to view free of charge on the Scheme website or at the library locations listed above.
- A single set of paper copies of the consultation booklet, Non-Technical Summary of the Preliminary Environmental Information Report, response form and Statement of Community Consultation will be supplied free of charge. A digital copy on a USB drive of these items will be supplied free of charge through the post if requested. Please contact Highways England for further details using the email address, postal address or telephone number provided below:
 - By emailing: A303Stonehenge@highwaysengland.co.uk
 - In writing: Freepost, A303 STONEHENGE CONSULTATION
 - By calling: 0300 123 5000

- If you do not have access to a computer a printed copy of the scheme plans and the PEI Report can be sent to you if requested. A charge of £135 + VAT/delivery costs will be made for each copy provided.

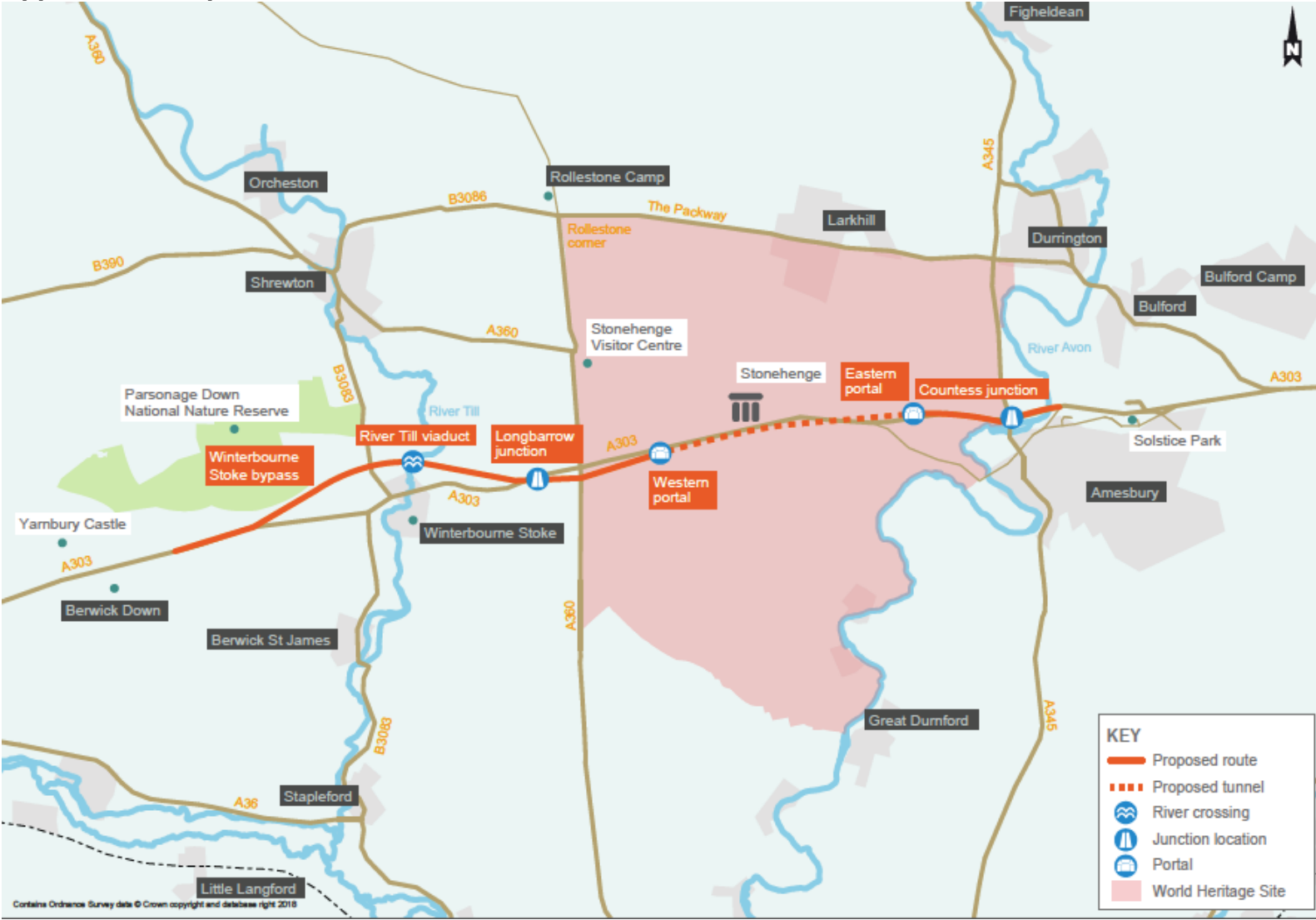
Following the consultation period, Highways England will review all of the responses received and produce a consultation report. This report will summarise the views and comments received and outline how these have been taken into consideration in further developing the Scheme. Highways England will send this report to the Planning Inspectorate as part of the DCO application.

Data protection

Your comments will be analysed by Highways England and any of its appointed agents. Copies may be made available in due course to the Secretary of State, the Planning Inspectorate and other relevant statutory authorities so that your comments can be considered as part of the Development Consent Order (DCO) application process. We will request that your personal details are not placed on public record and will be held securely by Highways England in accordance with the Data Protection Act 1998 and will be used solely in connection with the consultation process and subsequent DCO application and, except as noted above, will not be passed to third parties.

Date: **31 January 2018**

Appendix 1: Proposed scheme



If you need help accessing this or any other Highways England information, please call **0300 123 5000** and we will help you.

© Crown copyright 2018

You may re-use this information (not including logos) free of charge in any format or medium, under the terms of the Open Government Licence. To view this licence: visit www.nationalarchives.gov.uk/doc/open-government-licence/ write to the **Information Policy Team, The National Archives, Kew, London TW9 4DU**, or email psi@nationalarchives.gsi.gov.uk.

This document is also available on our website at www.gov.uk/highways

If you have any enquiries about this publication email info@highwaysengland.co.uk or call **0300 123 5000***. Please quote the Highways England publications code **PR174/17**.

Highways England creative job number BED18 0022

*Calls to 03 numbers cost no more than a national rate call to an 01 or 02 number and must count towards any inclusive minutes in the same way as 01 and 02 calls. These rules apply to calls from any type of line including mobile, BT, other fixed line or payphone. Calls may be recorded or monitored.

Printed on paper from well-managed forests and other controlled sources.

Registered office Bridge House, 1 Walnut Tree Close, Guildford GU1 4LZ
Highways England Company Limited registered in England and Wales number 09346363

C9 List of recipients who were notified of SoCC correspondence and corresponding emails

Table C9 -1 List of MPs who received the email dated 31 January 2018 advising of the published SoCC

Name	Position	Constituency
John Glen	Member of Parliament	Salisbury
Andrew Murrison	Member of Parliament	South West Wiltshire
James Gray	Member of Parliament	North Wiltshire
Robert Buckland	Member of Parliament	South Swindon
Claire Perry	Member of Parliament	Devizes
Justin Tomlinson	Member of Parliament	North Swindon

Table C9-2 List of officials, Councillors and organisations informing them of the publication of SoCC, sent 31 January 2018

Name	Position / organisation
Allington Parish Council clerk	Allington Parish Council
Wendy Brown	Amesbury Town Council
Andrew Williams	Amesbury Town Council
Neil Macdougall	Berwick St James Parish Meeting
Bulford Parish Council parish clerk	Bulford Parish Council
Chitterne Parish Council clerk	Chitterne Parish Council
Cholderton Parish Council clerk	Cholderton Parish Meeting
Charles Smith	Dinton Parish Council
Durnford Parish Council clerk	Durnford Parish Council
Durrington Parish Council clerk	Durrington Parish Council
Robert McCarthy	East Knoyle Parish Council
John Menzies	Figheledean Parish Council
Graham Smith	Fovant Parish Council
Chris Musselwhite	Great Wishford Parish Council
Idminton Parish Council clerk	Idminton Parish Council
Ludgershall Town Council	Town council
Milston Parish Council clerk	Milston Parish Council
John Badgery	Orcheston Parish Council
Shrewton Parish Council clerk and chair	Shrewton Parish Council

Cllr John Berry	Shrewton Parish Council
Richard Botten	South Newton & Stoford Parish Council
Monika Geoghegan	Stapleford Parish Council
Stapleford Parish Council clerk	Stapleford Parish Council
Jenny Macdougall	Steeple Langford Parish Council and Wyle Parish Council
Adam Harris	Tilshead Parish Council
Trudie James	Tilshead Parish Council
Eddie Deighton	Wilford cum Lake Parish Meeting
Winterbourne Parish Council clerk	Winterbourne Parish Council
Winterbourne Stoke Parish Council clerk	Winterbourne Stoke Parish Council
Dr Andy Shuttleworth, chair	Winterbourne Stoke Parish Council
Woodford Parish Council clerk	Woodford Parish Council
Jackie Clark	Chairman, Area Board Representative and Bulford Council
Cllr Tony Deane	Wiltshire Council
Cllr Darren Henry	Wiltshire Council
Cllr Fleur de Rhé-Philippe	Wiltshire Council
Cllr Fred Westmoreland	Wiltshire Council
Cllr George Jeans	Wiltshire Council
Cllr Graham Wright	Wiltshire Council
Cllr John Frederick Smale	Wiltshire Council
Cllr Robert Yuill	Wiltshire Council

Table C9-3 Email to officials advising of publication of Statement of Community Consultation (SoCC), dated 31 January 2018 and 1 February 2018

Name	Position / organisation	Date notified
Heather Sebire	English Heritage Trust	31 January 2018
Jennifer Davies	English Heritage Trust	31 January 2018
Jessica Trethowan	English Heritage Trust	31 January 2018
Karen Jones	Wiltshire Council	31 January 2018
Nicola Snashall	National Trust	31 January 2018
Nigel Blackler	Cornwall Council	31 January 2018
Parvis Khansari	Wiltshire Council	31 January 2018
Phil McMahon	Historic England	31 January 2018
Phillip Morris	The National Trust	31 January 2018
Sunita Mills	Somerset County Council	31 January 2018
Cllr John Woodman	Somerset County Council	31 January 2018
Paula Hewitt	Somerset County Council	31 January 2018
Deborah House	Swindon and Wiltshire LEP	31 January 2018
Mike O'Dowd-Jones	Somerset County Council	31 January 2018
Peter Doyle	Devon County Council	31 January 2018

Cllr Andrea Davis	Devon County Council	31 January 2018
Dave Black	Devon County Council	31 January 2018
Laura Russ	Dorset County Council	31 January 2018
Cllr Daryl Turner	Dorset County Council	31 January 2018
Andrew Minting	Wiltshire Council	1 February 2018
Fiona Elphick Wiltshire Council 1 February 2018 Clare King	Wiltshire Council	1 February 2018
Daniel Everett	Wiltshire Council	1 February 2018
John Carter	Wiltshire Council	1 February 2018
Gary Tomsett	Wiltshire Council	1 February 2018
Kevin Marshall	Wiltshire Council	1 February 2018
Maxine Russell	Wiltshire Council	1 February 2018
Melanie Ponmeroy-Kellinger	Wiltshire Council	1 February 2018
Mike Wilmott	Wiltshire Council	1 February 2018
Charles Routh	Natural England	1 February 2018
Katherine Burt	The Environment Agency	1 February 2018
Katherine Ryan	National Trust	1 February 2018

C9.1 Email to various officials, Councillors and organisations informing them of publication of SoCC (a list of these can be found in Appendix H), 31 January 2018

From: I
Sent: 31 January 2018 15:29
To:
Cc: UK-Project-A303-Voicemail <
Subject: Stonehenge Project

Dear Councillors,

I hope you're well.

I just wanted to let you know that the Statement of Community Consultation has been published today setting out the dates of the forthcoming public consultation on the A303 Stonehenge project. The notice which has been published in some national publications sets out the dates and times of the public events and the consultation period which runs from 8 February and run until 6 April. The full details of the scheme won't go live until the day of the official launch on the 8th but you may well get calls from the media who will start to become aware.

This consultation is a major step forward in the development of the scheme and an important part of the statutory planning process and we look forward to showing you the details of how the scheme is evolving and getting your views.

We very much look forward to see you at one of the events in the near future where we can explain in much more detail.

Kind regards

Jacqui

Jacqueline Day Senior Stakeholder and Communications Manager

Highways England | Temple Quay House | 2 The Square, Temple Quay | Bristol | BS1 6HA

Web: <http://www.highways.gov.uk>

C9.2 E-mail to MPs to advise of publication of SoCC (a list of these can be found in Appendix H), 31 January 2018

From: UK-Project-A303-Voicemail
To: Day, Jacqueline
Subject: RE: Stonehenge Project

From: Day, Jacqueline [mailto:Jacqueline.Day@highwaysengland.co.uk]

Sent: 31 January 2018 15:43

[Redacted content] uk'

All,

I just wanted to let you know that the Statement of Community Consultation has been published today setting out the dates of the forthcoming public consultation on the A303 Stonehenge project. The notice which has been published in some national publications sets out the dates and times of the public events and the consultation period which runs from 8 February and run until 6 April. The full details of the scheme won't go live until the day of the official launch on the 8th but you may well get calls from the media who will start to become aware.

This consultation is a major step forward in the development of the scheme and an important part of the statutory planning process and we look forward to showing you the details of how the scheme is evolving and getting your views.

If you have any queries please do not hesitate to contact me.

Kind regards

Jacqui

Jacqueline Day Senior Stakeholder and Communications Manager

[Redacted signature]

Highways England | Temple Quay House | 2 The Square, Temple Quay | Bristol | BS1 6HA
Web: <http://www.highways.gov.uk>

C9.3 E-mail to stakeholders regarding publication of SoCC and including the South West Local Enterprise Partnership informing of the consultation period, 31 January 2018

From: Day, Jacqueline [REDACTED]

Sent: 31 January 2018 14:58

To: 'Peter Doyle' [REDACTED] 'andrea.davis' [REDACTED]

[REDACTED] 'dave.black' [REDACTED]

Cc: UK-Project-A303-Voicemail <A303@wsp.com>; Page-Dove, Andrew [REDACTED]

[REDACTED] Taylor, Holly [REDACTED]

Subject: SoCC - A303 Stonehenge

Importance: High

All,

I just wanted to let you know that the Statement of Community Consultation has been published today setting out the dates of the forthcoming public consultation on the A303 Stonehenge project. The notice which has been published in some national publications sets out the dates and times of the public events and the consultation period which runs from 8 February and run until 6 April. The full details of the scheme won't go live until the day of the official launch on the 8th but you may well get calls from the media who will start to become aware.

This consultation is a major step forward in the development of the scheme and an important part of the statutory planning process and we look forward to showing you the details of how the scheme is evolving and getting your views.

If you have any queries please do not hesitate to contact me.

Kind regards

Jacqui

Jacqueline Day Senior Stakeholder and Communications Manager

[REDACTED]

[REDACTED]

Highways England | Temple Quay House | 2 The Square, Temple Quay | Bristol | BS1 6HA

Web: <http://www.highways.gov.uk>

C9.4 E-mail to Somerset council regarding the publication of the SoCC and out-reach to the local steering group for further engagement if required, 2 February 2018

From: Damrel, Jeremy [REDACTED]
Sent: 02 February 2018 08:47
To: [REDACTED]
Cc: Day, Jacqueline [REDACTED] Eastgate, Anna [REDACTED] White, Olivia <[REDACTED]>
Subject: A303 Stonehenge - public consultation

Sunita

We have now published our Statement of Community Consultation – you will see that the consultation runs from 8 February to 6 April. I would like to take this opportunity to repeat my offer at the recent steering group meeting – to meet with those who are interested to talk in more detail about the scheme. Please can you circulate the SOCC and extend my offer.

I would be grateful if all could consider the opportunities members of the group have to raise awareness of the scheme and to encourage advocacy, as we discussed at the meeting. I suggest using the SOCC and the consultation website as a tool in this would be easy and effective.

Regards

Jeremy

Jeremy Damrel, Project Director, A303 Stonehenge Technical Partner

[REDACTED]

[REDACTED]

[REDACTED]

C9 5 E-mail to Environmental Working Group regarding consultation period (members of this group can be seen in appendix B2), 1 February 2018

From: Stewart, Ross [REDACTED]
Sent: 01 February 2018 11:21
Subject: A303 Environmental Working Group - Statement of Community Consultation (SoCC)

Good morning all,

Thank you to those who were able to attend the second meeting of the environmental working group yesterday morning, I hope it was as useful for you as it was for us.

Further to discussions on the coming statutory consultation and for your information, we are sharing with you the A303 Stonehenge Statement of Community Consultation (attached).

If you have any questions relating to the attached please contact me in the first instance.

For both those who were unable to attend and those in attendance yesterday, I will be circulating meeting minutes in due course.

Regards,

Ross

Ross Stewart, BSc (Hons) MSc

Environmental Management Team, A303 Stonehenge Technical Partner
[REDACTED]

Senior - Environmental Assessment
[REDACTED]

C9.6 E-mail to Swindon and Wiltshire LEP (Local Enterprise Partnership), 31 January 2018 (see Appendix H)

From: Day, Jacqueline <Jacqueline.Day@highwaysengland.co.uk>
Sent: 31 January 2018 16:43
To: @heartofswlep.co.uk'; ' @swlep.co.uk'
Cc: UK - Project - A303; Taylor, Holly; Page-Dove, Andrew
Subject: SoCC - A303 Stonehenge

I hope you are well.

I just wanted to let you know that the Statement of Community Consultation has been published today setting out the dates of the forthcoming public consultation on the A303 Stonehenge project. The notice which has been published in some national publications sets out the dates and times of the public events and the consultation period which runs from 8 February and run until 6 April. The full details of the scheme won't go live until the day of the official launch on the 8th but you may well get calls from the media who will start to become aware.

This consultation is a major step forward in the development of the scheme and an important part of the statutory planning process and we look forward to showing you the details of how the scheme is evolving and getting your views.

If you have any queries please do not hesitate to contact me.

Kind regards

Jacqui

Jacqueline Day Senior Stakeholder and Communications Manager

Highways England | Temple Quay House | 2 The Square, Temple Quay | Bristol | BS1 6HA
Web: <http://www.highways.gov.uk>

- C10 Letter and email to Wiltshire Council regarding omitted Stonehenge Trader advert
- C10.1 Letter to Wiltshire Council regarding omitted Stonehenge Trader advert , 24 September 2018

Parvis Khansari
Wiltshire Council
County Hall
Bythesea Road
Trowbridge
Wiltshire
BA14 8JN

David Bullock
Highways England
Complex Infrastructure Programme
Temple Quay House
2, The Square
Temple Quay
Bristol
BS1 6HA

Date: 24 September 2018

Dear Parvis,

Re: Advertising the A303 – Amesbury to Berwick Down statutory consultation

Further to my email of 19 September 2018 and our conversation on 24 September 2018, I am writing to confirm that one of the commitments made in the Statement of Community Consultation (SoCC) for advertising the statutory consultation in February 2018, on the A303 – Amesbury to Berwick Down scheme was unfortunately not fulfilled.

We have prepared the following information and in doing so are satisfied that it demonstrates that the omission has not resulted in any geographical area within the consultation zone being excluded from the publicity of the consultation and the effectiveness and adequacy of the consultation has not been undermined. The full consultation zone (as outlined in the SoCC) and surrounding communities were effectively covered by the notices that were published in the three local and two national newspapers and through additional publicity about the consultation, such as through media engagement and social media. I invite you to consider the information below and should you agree with our assessment that the adequacy of the consultation undertaken is not impacted, we would appreciate confirmation to that effect, so that it can be included within the application documents shortly to be submitted to the Planning Inspectorate.

Commitment in the SoCC

On page 6 of the SoCC, Highways England stated:

“The consultation will be advertised in the following local newspapers Wiltshire Gazette and Herald, Salisbury Journal, for at least two successive weeks and once in the Wiltshire Times and Stonehenge Trader and once in the national newspapers (The Times and The Guardian) and the London Gazette.

In addition, adverts will be placed in local newspapers ahead of the launch of the consultation and reminders will be placed ahead of the public information events. Press releases providing details of the consultation and how the community and other interested parties can participate will be issued.”

I can confirm publicity was undertaken in compliance with the requirements of section 48 of the PA 2008 and the APFP Regulations in relation to the number, frequency and location of newspaper notices placed, as outlined in the below two tables.

Publication of the SoCC notices

Names	Week 1	Week 2
National newspapers		
The Times	02 February 2018	07 February 2018
The Guardian	31 January 2018	07 February 2018
London Gazette	31 January 2018	07 February 2018
Local newspapers		
Wiltshire Gazette and Herald	01 February 2018	08 February 2018
Salisbury Journal	01 February 2018	08 February 2018
Wiltshire Times	n/a	09 February 2018

Publication of the s48 notices

Names	Week 1	Week 2
National newspaper		
The Times	02 February 2018	07 February 2018
The Guardian	31 January 2018	07 February 2018
The London Gazette	31 January 2018	07 February 2018
Local newspaper		
Salisbury Journal	01 February 2018	08 February 2018
Wiltshire Gazette & Herald	01 February 2018	08 February 2018
Wiltshire Times	n/a	09 February 2018

However, in addition to the three local newspapers that notices were placed in, being the Salisbury Journal, the Wiltshire Gazette and Herald and the Wiltshire Times, Highways England had proposed in the SoCC to also publicise the consultation in the Stonehenge Trader.

Unfortunately, due to an administrative error, the notice was not placed in the Stonehenge Trader.

That publication is a free through-the-door newspaper distributed to around 11,700 properties in Amesbury, Durrington, Bulford and the surrounding villages and 300 copies are distributed to local shops, pubs and other community amenities in this area.

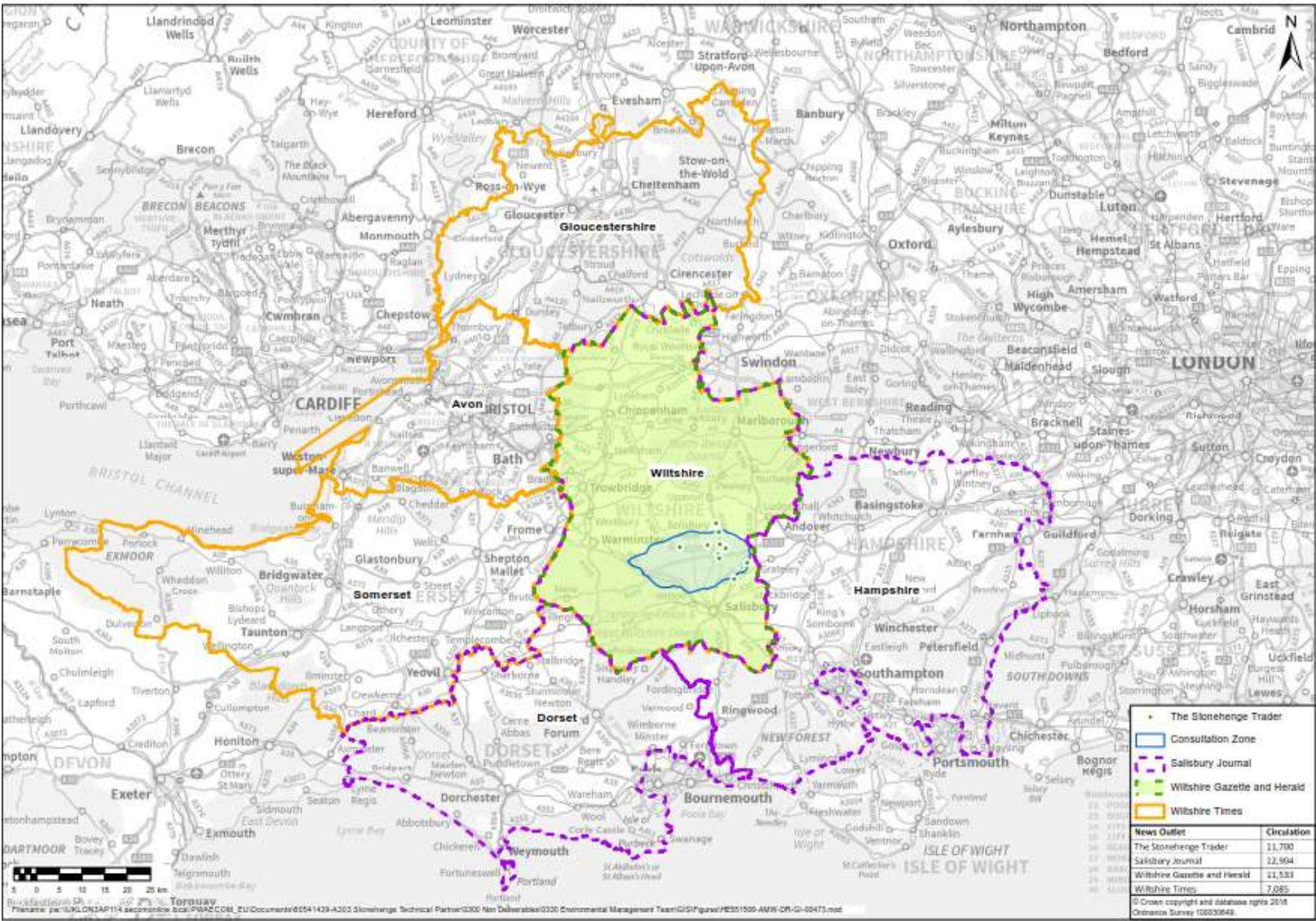
The below table outlines the circulation for the papers in which the consultation was advertised, relative to that of the Stonehenge Trader. The information below demonstrates that the Wiltshire Times and Wiltshire Gazette and Herald covered the same geographical area as the Stonehenge Trader and have similar circulation numbers. Moreover, they are weekly publications, where as the Stonehenge Trader is only published monthly.

The circulation of publications mentioned in the SoCC

News outlet	Media type	Geographical coverage	Frequency	Circulation
Stonehenge Trader	Regional magazine	South West (Wiltshire)	Monthly – 1st of each month	11,700 (estimated)
Wiltshire Gazette and Herald	Regional newspaper	Wiltshire	Weekly - Thursday	11,533
Wiltshire Times	Regional newspaper	Wiltshire, Avon, Gloucestershire and Somerset	Weekly - Friday	7,085
Salisbury Journal	Regional newspaper	Wiltshire, Dorset and Hampshire	Weekly - Thursday	12,904
The Times	National newspaper	National	Daily	433,604
London Gazette	Magazine	National	Daily	Unknown
The Guardian	National newspaper	National	Daily	142,318

The map below illustrates the cross-over in geographical coverage of the Stonehenge Trader with the three regional newspapers in which the consultation was advertised. In addition, the consultation was advertised in The Times and the Guardian, both of which have national circulation.

Figure 1 Map of the coverage of the Stonehenge Trader and other local publications



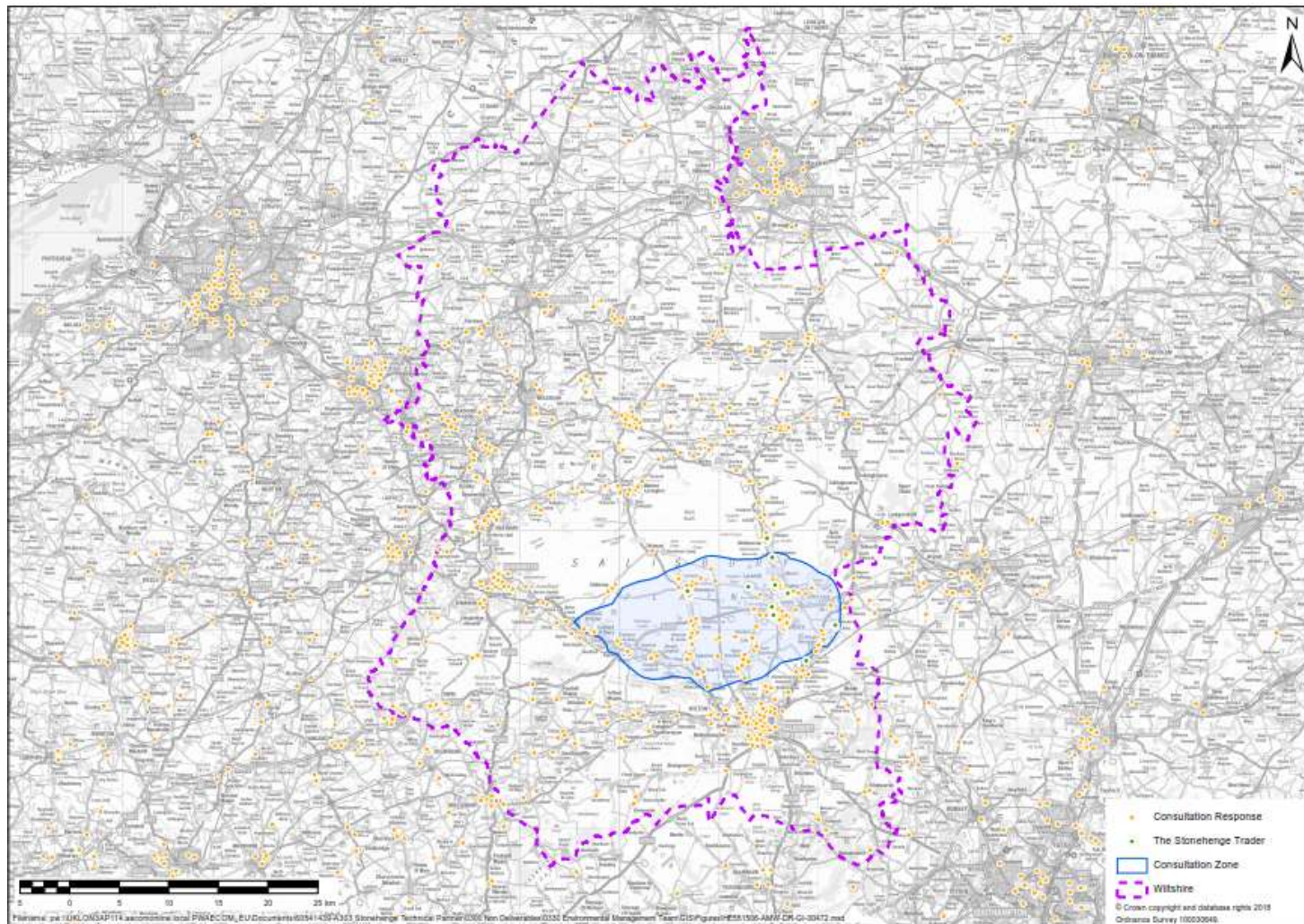
In addition to paid advertising, Highways England undertook substantial additional communications as part of the publicity for the consultation, this included:

- Letters were sent to 13,500 properties in the identified consultation zone, plus prescribed consultees, landowners and interested parties. The consultation zone covers the majority of the Stonehenge Trader delivery area. The exceptions are Porton (Stonehenge Trader delivers 410 copies), Netheravon (Stonehenge Trader delivers 750 copies) and Haxton & Fittleton (Stonehenge Trader delivers 100 copies). However, as these locations lie outside of the consultation zone they are not considered to be within those areas most likely to be affected by the scheme in which consultation was required.
- A series of parish, town and county council meetings were held to discuss and promote the consultation
- A Community Forum was established which first met in February 2018 to encourage local people to have their say
- Emails and bulletins were sent to those registered to receive information about the scheme on 8 February and 21 March.
- A Highways England scheme webpage and consultation page went live 8 February 2018 to provide information on the scheme and to enable people to submit their responses to the consultation online
- The consultation and consultation events were promoted on Highways England's social media accounts
- Copies of printed consultation information were placed at ten deposit points and six information points and given to 19 parish councils to display. This group of parish councils covered the majority of the areas the Stonehenge Trader distributed in except Bulford Parish Council (who only wanted to receive the consultation material by email) and Netheravon, Haxton and Fittleton. Netheravon, Haxton and Fittleton are outside the consultation zone as explained above.
- 14 public consultation events were held in a wide spread of locations.
- The consultation was publicised via Amesbury's Community Matters Blog and email list, through Wiltshire Council's Community Engagement Manager for Amesbury

It is also noteworthy that the consultation resulted in significant media coverage across a range of TV, radio, local and national newspapers.

The map below illustrates the geographical coverage of the responses received, relative to the geographical distribution of the Stonehenge Trader and demonstrates that responses were received across the distribution area for that publication.

Figure 2 Geographical coverage of the responses received and the distribution of the Stonehenge Trader

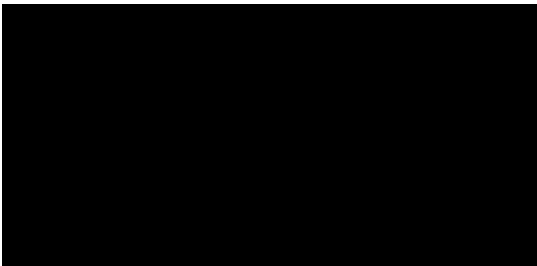




I hope the above reassures you that Highways England undertook a compliant consultation which met the needs of the local community.

If you have any questions on any of the above, please don't hesitate to contact me. As you are aware we are due to shortly submit the Development Consent Order application so your quick response would be much appreciated.

Yours sincerely,



David Bullock

Project Manager for Highways England

C10.2 Email to Wiltshire Council regarding omitted Stonehenge Trader advert, 28 September 2018

From: Bullock, David [<mailto:David.Bullock@highwaysengland.co.uk>]
 Sent: 28 September 2018 12:14
 To: Khansari, Parvis <Parvis.Khansari@wiltshire.gov.uk>
 Cc: Jones, Karen <Karen.Jones@wiltshire.gov.uk>; emma.harling-phillips@pinsentmasons.com;
cjacob@gmail.com
 Subject: SoCC Query

Dear Parvis,

Further to our earlier conversation, I can confirm that the consultation was not published in the Stonehenge Trader at any point in the consultation process. As such, that omission applies to both the original and extended consultation. However, for the reasons previously explained, we are of the view that this is not undermined the effectiveness of the consultation undertaken or prejudiced any consultees.

In relation to your query regarding the commitment in the SoCC to place reminders ahead of the public events. The commitment in the Statement of Community Consultation states that *“adverts will be placed in local newspapers ahead of the launch of consultation and reminders will be placed ahead of the public event.”*

In addition to the statutory notices outlined in our letter dated the 24 September 2018, at the start of consultation half page adverts were placed in The Wiltshire Times (16 February 2018), The Wiltshire Gazette and Herald (15 February 2018), Swindon Star (15 February 2018), the Salisbury Journal (15 February 2018) and The Times (7 and 13 February 2018) and Guardian (7 February 2018).

These adverts in the regional press acted as a reminder of the public events for the events for the following weeks.



Warrior on regimental visit

The Prince of Wales visits the 1st Battalion, The Buffs (East Kent Regiment) in Salisbury.

Improving the A303 past Stonehenge

We are consulting on improvements to the A303 between Salisbury and Berwick Down.

The need to improve this road to make travelling between the South West and the South East easier and safer, reduce congestion, make journey times more reliable and support wider economic growth.

Removing sight and noise of traffic from Stonehenge and provides the opportunity to reconnect the World Heritage Site with its surroundings, helping visitors to re-experience the natural setting.

Make your voice heard

This is your opportunity to tell us what you think before we submit our Application to the Planning Inspectorate for a Development Consent Order.

Visit our website: www.highways.gov.uk/A303Stonehengeconsultation

Join us at one of our information events. Members of our team will be on hand to answer your questions. See our website for details.

See the proposals

Copies of consultation mappings, maps and representations are available at locations in the local area, as well as online.

Call us on 0300 123 5000 for details.

The consultation will run from 9 February to 9 April 2018.

www.highways.gov.uk/A303Stonehengeconsultation

In addition, every public event was promoted on the @A303Stonehenge Twitter account and ad-vans were used to further remind people of the consultation being undertaken.



With the consultation being extended due to severe winter weather, the marketing approach changed with a full re-issue of notices, a press release and letters to promote the rescheduled events.

Mid-analysis of consultation feedback showed responses from a narrow demographic. We therefore recognised the need to reach other demographics and road-users. During 21 to 31 March adverts appeared on various websites and platforms, including Facebook and Instagram paid-for advertising. From Thursday 22 to 31 March, two vans liveried with digital display boards ran along the A303 to promote the consultation to local people and road users.



The above demonstrates the range of measures taken to advertise the consultation and remind consultees of the events taking place, beyond the use of adverts in publications. We believe this demonstrates that the commitment in the SoCC to provide reminders about the consultation was met by Highways England in order to deliver a comprehensive and effective consultation.

Please let me know if the above is sufficient, and if you have any further questions please do not hesitate to contact me.

Kind regards,

David Bullock
Highways England

C11 Letter from Wilshire Council regarding omitted Stonehenge Trade advert, 2 October 2018

2nd October 2018

Mr David Bullock
A303 Project Manager
Highways England
Complex Infrastructure Programme
Temple Quay House
2 The Square
Temple Quay
Bristol
BS1 6HA

Highways and Transport
County Hall
Bythesea Road
Trowbridge
Wiltshire
BA14 8JN

Your ref:

Our ref:

Dear David,

Re: Advertising the A303 – Amesbury to Berwick Down statutory consultation

Thank you for your letter dated 24th September and follow-up clarification email sent on the 28th September regarding Highways England's omission to advertise the A303 Amesbury to Berwick Down statutory consultation at all in the Stonehenge Trader publication.

This is unfortunate as the Stonehenge Trader, as identified in the Statement of Community Consultation (SoCC), is the local publication to the Stonehenge / Amesbury area, which is that which is most affected by the proposals.

Furthermore, it is disappointing that administrative errors resulted in Highways England missing the opportunity to utilise the Stonehenge Trader's geographical reach into the local area at both the launch of the statutory consultation and when the SoCC was re-issued in March following the adverse weather notifying the public of the extension to the consultation period and re-arrangement of two of the public information events.

However, The Council notes that the newspaper adverts were only one method specified within the SoCC to inform the public of the consultation, how they could find out further information and notify Highways England of their views on the proposals.

Fourteen public information events were held in the surrounding local area and further afield across the County and in London. Ten public libraries and public buildings were used as deposit points, where consultation forms and consultation documentation were available to be viewed in hard copy. Additionally, six health facilities were utilised for members of the public to pick up consultation booklets and response forms. Scheme leaflets were delivered to residential and business addresses within the consultation zone and copies provided to parish clerks for the community notice boards, unless expressly requested otherwise. A selection of briefings and ad hoc meetings were also held during the consultation period, i.e. Community Area Boards, Local Councillors and the Community Forum. The scheme had its own dedicated website and Twitter channel. The consultation was also extensively covered on local radio stations and news channels. Additionally,

mobile adverts were driven along the A303 route to inform local people and road users and adverts promoting the consultation were procured on Facebook and Instagram.

In addition to the activities undertaken by Highways England, Wiltshire Council promoted the consultation on its website and through its 'Our Community Matters' site. The Amesbury Community Engagement Manager shared the consultation material with all 22 Town and Parish Councils within the Amesbury Community Area and with the other Community Engagement Managers across the entire Wiltshire Council area who have in turn shared it with those groups who have shown an interest in their areas. Several parishes also informed residents of the consultation through inclusion within their parish newsletters.

From Highways England's analysis, it appears that there were three villages who would normally receive the Stonehenge Trader publication but would not have been sent a leaflet direct to their door informing them of the consultation. These have been identified as Netheravon, Haxton and Fittleton, and Porton. These villages are within the Tidworth and Amesbury Area Board areas respectively. Highways England delivered a presentation on the A303 scheme and answered questions at the Tidworth Area Board meeting on 26th March 2018. The scheme has also been a semi-regular feature at the Amesbury Area Board, with presentations and the opportunity to ask questions to Highways England representatives at the meetings held on 18th January and 22nd March 2018. Furthermore, these areas have been confirmed as part of the Salisbury Journal distribution area, which reaches north of Salisbury to the Upavon and Enford areas.

Whilst it is extremely regrettable that the Stonehenge Trader publication was not utilised by Highways England to strengthen community engagement and penetration, Wiltshire Council is of the view that when taking the full range of promotional activities into account, the overall penetration for community awareness of the statutory consultation was sufficient.

As the published Statements of Community Consultation have not been fully complied with, it is Highways England's decision on whether to proceed with the Development Consent Order application. Wiltshire Council will provide the Inspector with its assessment of the soundness of the community engagement when requested to do so through a Statement on the Adequacy of Community Consultation.

Yours sincerely,



Parvis Khansari
Director
Highways and Transport

Direct line: 01225 713340
Email: parvis.khansari@wiltshire.gov.uk

If you need help accessing this or any other Highways England information, please call **0300 123 5000** and we will help you.

© Crown copyright 2018.

You may re-use this information (not including logos) free of charge in any format or medium, under the terms of the Open Government Licence. To view this licence: visit www.nationalarchives.gov.uk/doc/open-government-licence/ write to the Information Policy Team, The National Archives, Kew, London TW9 4DU, or email psi@nationalarchives.gsi.gov.uk.

This document is also available on our website at www.gov.uk/highways

If you have any enquiries about this document email info@a303stonehenge.co.uk or call **0300 123 5000**.*

*Calls to 03 numbers cost no more than a national rate call to an 01 or 02 number and must count towards any inclusive minutes in the same way as 01 and 02 calls.

These rules apply to calls from any type of line including mobile, BT, other fixed line or payphone. Calls may be recorded or monitored.

Registered office Bridge House, 1 Walnut Tree Close, Guildford GU1 4LZ
Highways England Company Limited registered in England and Wales number 09346363