

NOTES / LEGEND

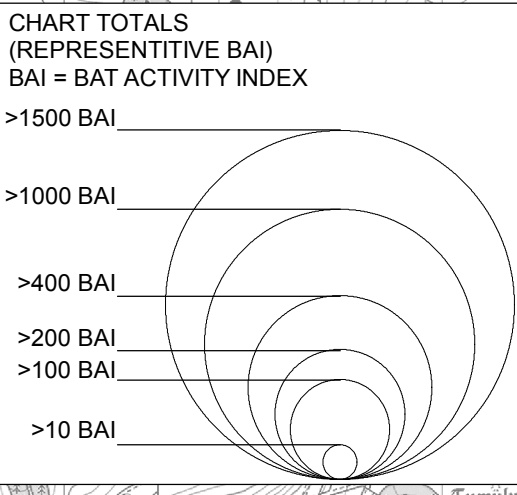
- Indicative centreline
- Proposed tunnel
- Proposed scheme boundary
- Static Bat Detector Locations

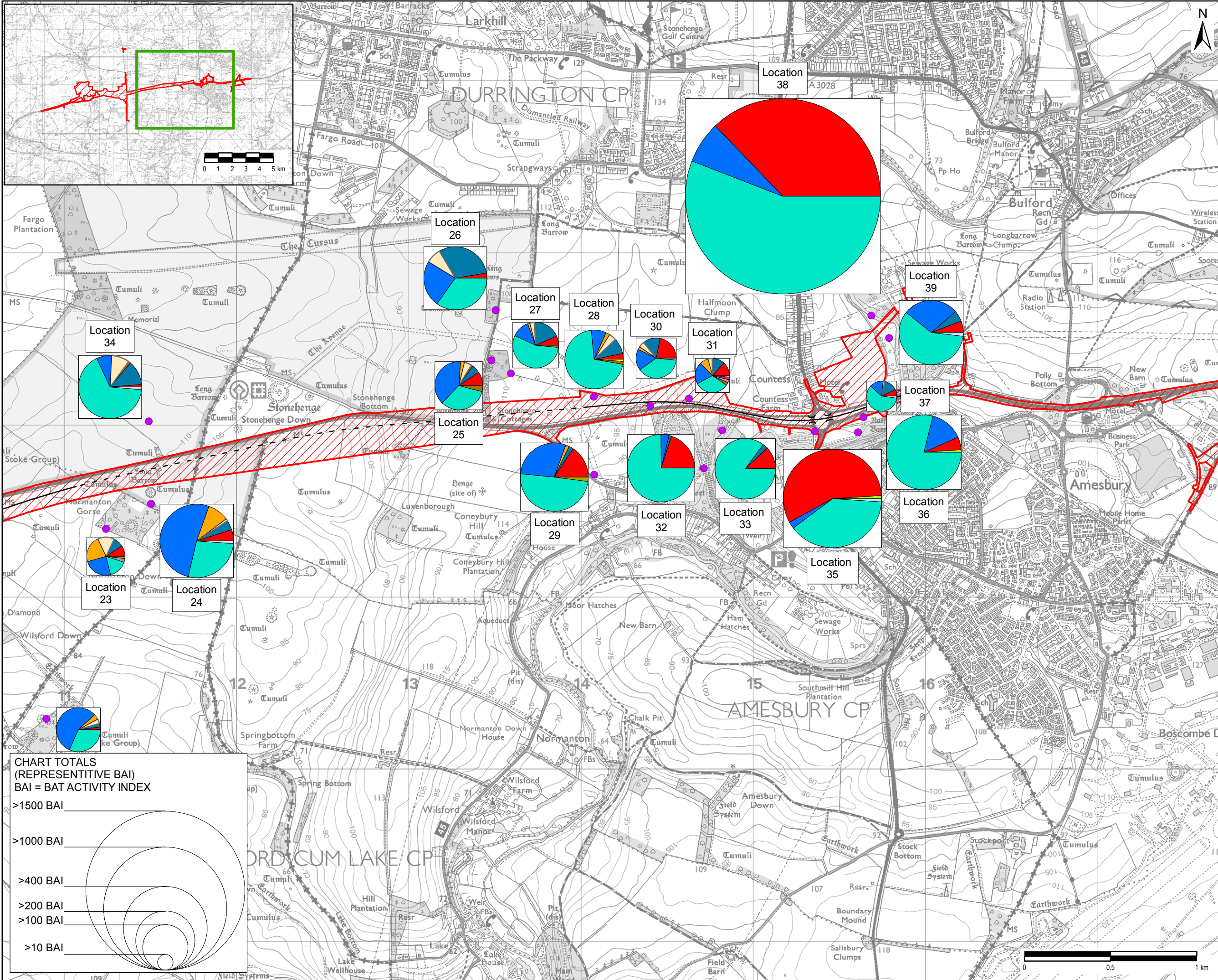
Bat Activity Index

- Lesser horseshoe bat
- Greater horseshoe bat
- Daubenton's bat
- Natter's bat
- Brandt's bat
- Whiskered bat
- Myotis species
- Noctule bat
- Leisler's bat
- Nyctalus species
- Serotine bat
- Common pipistrelle bat
- Soprano pipistrelle bat
- Nathusius' pipistrelle bat
- Pipistrelle species
- Plecotus species
- Plecotus / Myotis
- Plecotus / serotine
- Barbastelle bat
- Big bat

Contains OS Data © Crown Copyright and database rights 2018

Revision Details		By	Check	Date	Suffix
Purpose of issue		FINAL			
Client		Highways England			
Working on behalf of		highways england			
Project Title		A303 AMESBURY TO BERWICK DOWN			
Drawing Title		FIGURE 8.15A BAT ACTIVITY STATIC MONITORING SURVEYS			
Designed	MC	Drawn	GM	Checked	JDS
Approved	SP	Date	31/08/18		
Internal Project No.		60541200			
Scale @ A3	1:20,000	Zone	SW		
THIS DOCUMENT HAS BEEN PREPARED PURSUANT TO AND SUBJECT TO THE TERMS OF AECOM'S APPOINTMENT BY ITS CLIENT. AECOM ACCEPTS NO LIABILITY FOR ANY USE OF THIS DOCUMENT OTHER THAN BY ITS ORIGINAL CLIENT OR FOLLOWING AECOM'S EXPRESS AGREEMENT TO SUCH USE, AND ONLY FOR THE PURPOSES FOR WHICH IT WAS PREPARED AND PROVIDED.					
Highways England		Temple Quay House		2 The Square, Temple Quay	
Bristol		BS1 6HA		AmW	
AECOM + mace + WSP					
Drawing Number	HE551506	Originator	AMW	Volume	GEN
Highways England PIN	SCHEME WIDE	DR	GI	00470	01
Location		Type	Role	Number	





NOTES / LEGEND

- Indicative centreline
- Proposed tunnel
- Proposed scheme boundary
- Static Bat Detector Locations

Bat Activity Index

- Lesser horseshoe bat
- Greater horseshoe bat
- Daubenton's bat
- Natter's bat
- Brandt's bat
- Whiskered bat
- Myotis species
- Noctule bat
- Leisler's bat
- Nyctalus species
- Serotine bat
- Common pipistrelle bat
- Soprano pipistrelle bat
- Nathusius' pipistrelle bat
- Pipistrelle species
- Plecotus species
- Plecotus / Myotis
- Plecotus / serotine
- Barbastelle bat
- Big bat

Contains OS Data © Crown Copyright and database rights 2018

Revision Details		By	Check	Date	Suffix
Purpose of issue		FINAL			
Client		Highways England			
Working on behalf of					
Project Title		A303 AMESBURY TO BERWICK DOWN			
Drawing Title		FIGURE 8.15B BAT ACTIVITY STATIC MONITORING SURVEYS			
Designed	MC	Drawn	GM	Checked	JDS
Approved	SMO	Date	31/08/18		
Internal Project No.		60541200			
Scale @ A3	1:20,000	Zone	SW		
THIS DOCUMENT HAS BEEN PREPARED PURSUANT TO AND SUBJECT TO THE TERMS OF AECOM'S APPOINTMENT BY ITS CLIENT. AECOM ACCEPTS NO LIABILITY FOR ANY USE OF THIS DOCUMENT OTHER THAN BY ITS ORIGINAL CLIENT OR FOLLOWING AECOM'S EXPRESS AGREEMENT TO SUCH USE, AND ONLY FOR THE PURPOSES FOR WHICH IT WAS PREPARED AND PROVIDED.					
Highways England				AECOM + mace + WSP	
Drawing Number	HE551506	Originator	AMW	Volume	GEN
Highways England PIN	SCHEME WIDE	DR	GI	00470	01
Location		Type	Role	Number	

