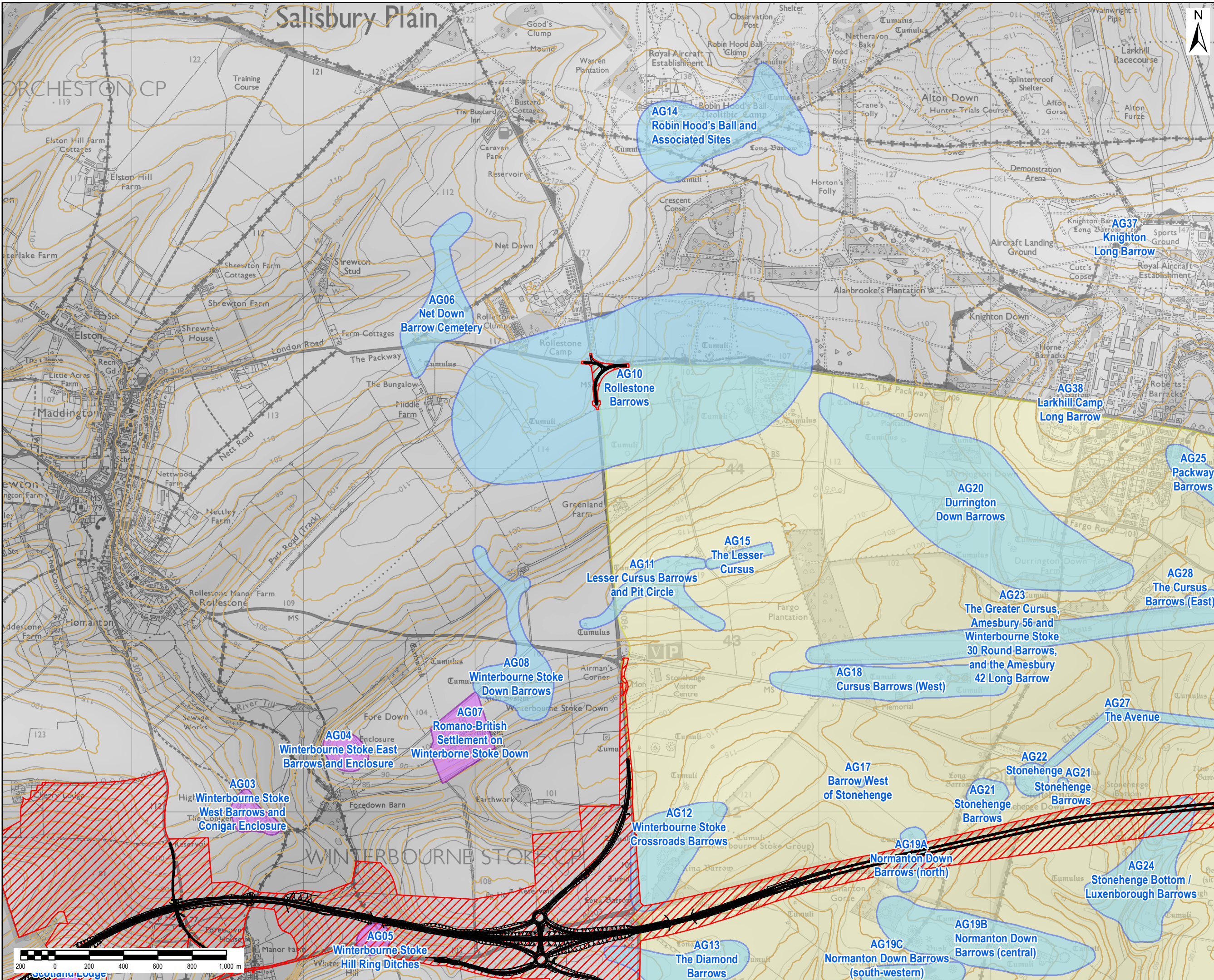


NOTES / LEGEND

- Indicative centreline
- Proposed scheme boundary
- 2km Study Area
- World Heritage Site
- HIA Asset Groups

© Crown copyright and database rights 2017 Ordnance Survey 100030649. © Historic England 2018.

Revision Details	By	Check	Date	Suffix
Purpose of issue				
FINAL				
Client		Working on behalf of		
Highways England				
Project Title				
A303 AMESBURY TO BERWICK DOWN				
Drawing Title				
HIA FIGURE 9 KEY MAP INDICATING THE LOCATION OF ASSET GROUPS				
Designed	Drawn	Checked	Approved	Date
HS	GM	CC	WB	04/09/18
Internal Project No.				
60541200				
Scale @ A3		Zone		
1:75,000		SW		
THIS DOCUMENT HAS BEEN PREPARED PURSUANT TO AND SUBJECT TO THE TERMS OF AECOM'S APPOINTMENT BY ITS CLIENT. AECOM ACCEPTS NO LIABILITY FOR ANY USE OF THIS DOCUMENT OTHER THAN BY ITS ORIGINAL CLIENT OR FOLLOWING AECOM'S EXPRESS AGREEMENT TO SUCH USE, AND ONLY FOR THE PURPOSES FOR WHICH IT WAS PREPARED AND PROVIDED.				
Highways England Temple Quay House 2 The Square, Temple Quay Bristol BS1 6HA				 AECOM + mace + WSP
Drawing Number		Originator		Rev
HE551506		AMW		01
SCHEME WIDE		DR		GI 00457
Location		Type		Role
				Number



- NOTES / LEGEND
- Proposed route alignment
 - Proposed structure
 - Proposed scheme boundary
 - 5m Contour Intervals
 - Asset Groups outside the WHS addressed in the Environmental Statement
 - Asset Groups within or with a relationship to the WHS
 - World Heritage Site

© Crown copyright and database rights 2017 Ordnance Survey 100030649.
Historic Environment Record (HER) © Wiltshire Council October 2017. Data reproduced with permission from Wiltshire Council Archaeology Service.
© Historic England 2017. Contains Ordnance Survey data © Crown copyright and database right 2017. The Historic England GIS Data contained in this material was obtained on 09-11-2017. The most publicly available up to date Historic England GIS Data can be obtained from HistoricEngland.org.uk

Revision Details	By	Check	Date	Suffix

Purpose of issue
FINAL

Client
Highways England
Working on behalf of

Project Title
A303 AMESBURY TO BERWICK DOWN

Drawing Title
HIA FIGURE 9A
KEY MAP INDICATING THE
LOCATION OF ASSET GROUPS

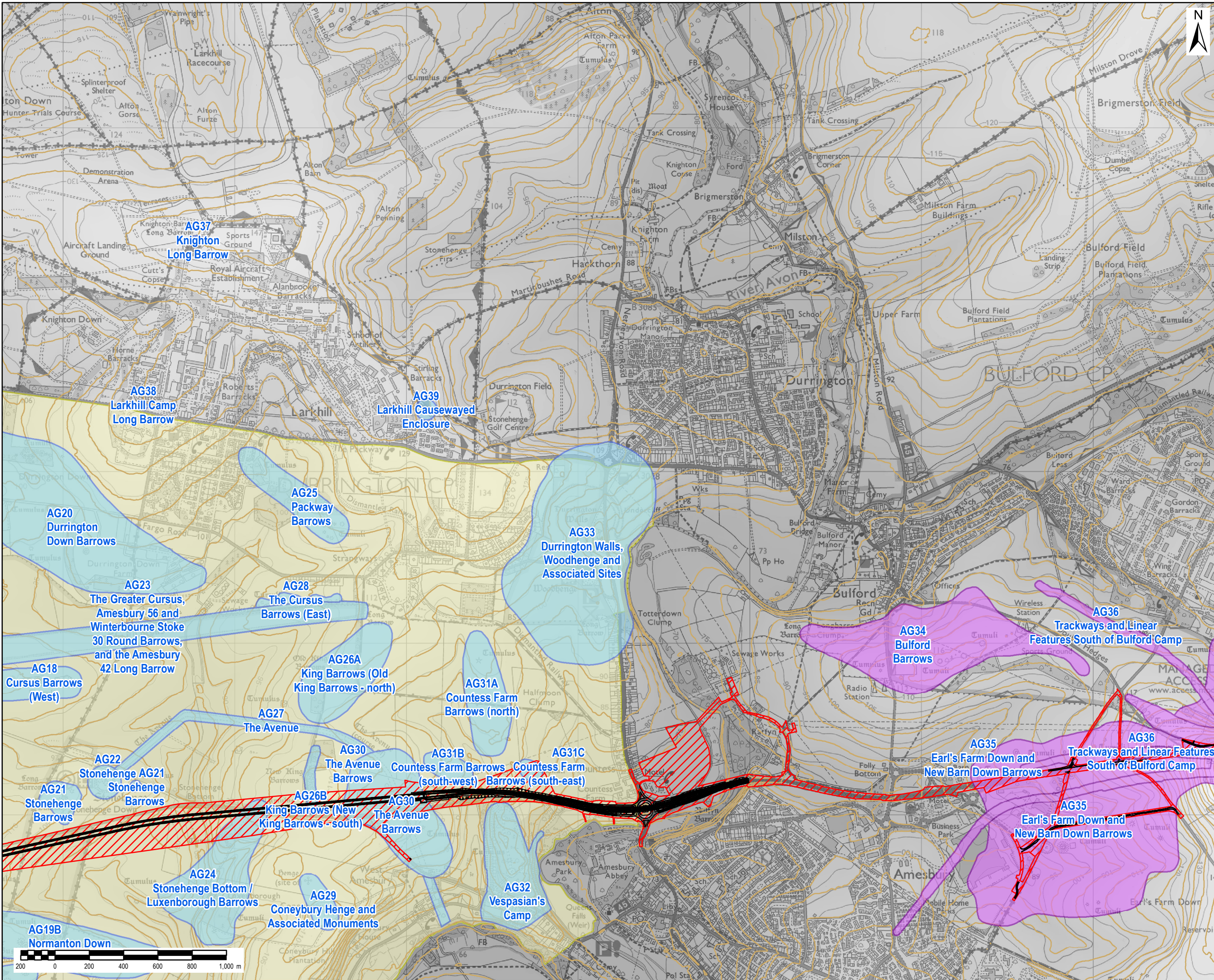
Designed	Drawn	Checked	Approved	Date
LO	GM/TD	CC	LO	05/10/18
Internal Project No. 60541200				
Scale @ A3 1:20,000		Zone SW		

THIS DOCUMENT HAS BEEN PREPARED PURSUANT TO AND SUBJECT TO THE TERMS OF AECOM'S APPOINTMENT BY ITS CLIENT. AECOM ACCEPTS NO LIABILITY FOR ANY USE OF THIS DOCUMENT OTHER THAN BY ITS ORIGINAL CLIENT OR FOLLOWING AECOM'S EXPRESS AGREEMENT TO SUCH USE, AND ONLY FOR THE PURPOSES FOR WHICH IT WAS PREPARED AND PROVIDED.

Highways England
Temple Quay House
2 The Square, Temple Quay
Bristol
BS1 6HA

AECOM + mace + WSP

Drawing Number	Highways England PIN	Originator	Volume	Rev
HE551506	AMW	AMW	GEN	01
SCHEME WIDE		DR	GI	00349
Location		Type	Role	Number



- NOTES / LEGEND
- Proposed route alignment
 - Proposed structure
 - Proposed scheme boundary
 - 5m Contour Intervals
 - Asset Groups outside the WHS addressed in the Environmental Statement
 - Asset Groups within or with a relationship to the WHS
 - World Heritage Site

© Crown copyright and database rights 2017 Ordnance Survey 100030649.
Historic Environment Record (HER) © Wiltshire Council October 2017. Data reproduced with permission from Wiltshire Council Archaeology Service
© Historic England 2017. Contains Ordnance Survey data © Crown copyright and database right 2017. The Historic England GIS Data contained in this material was obtained on 09-11-2017. The most publicly available up to date Historic England GIS Data can be obtained from HistoricEngland.org.uk

Revision Details			
	By	Date	Suffix

Purpose of issue
FINAL

Client
Highways England

Working on behalf of

Project Title
A303 AMESBURY TO BERWICK DOWN

Drawing Title
HIA FIGURE 9B
KEY MAP INDICATING THE LOCATION OF ASSET GROUPS

Designed	Drawn	Checked	Approved	Date
LO	GM/TD	CC	LO	05/10/18

Internal Project No. 60541200

Scale @ A3	Zone
1:20,000	SW

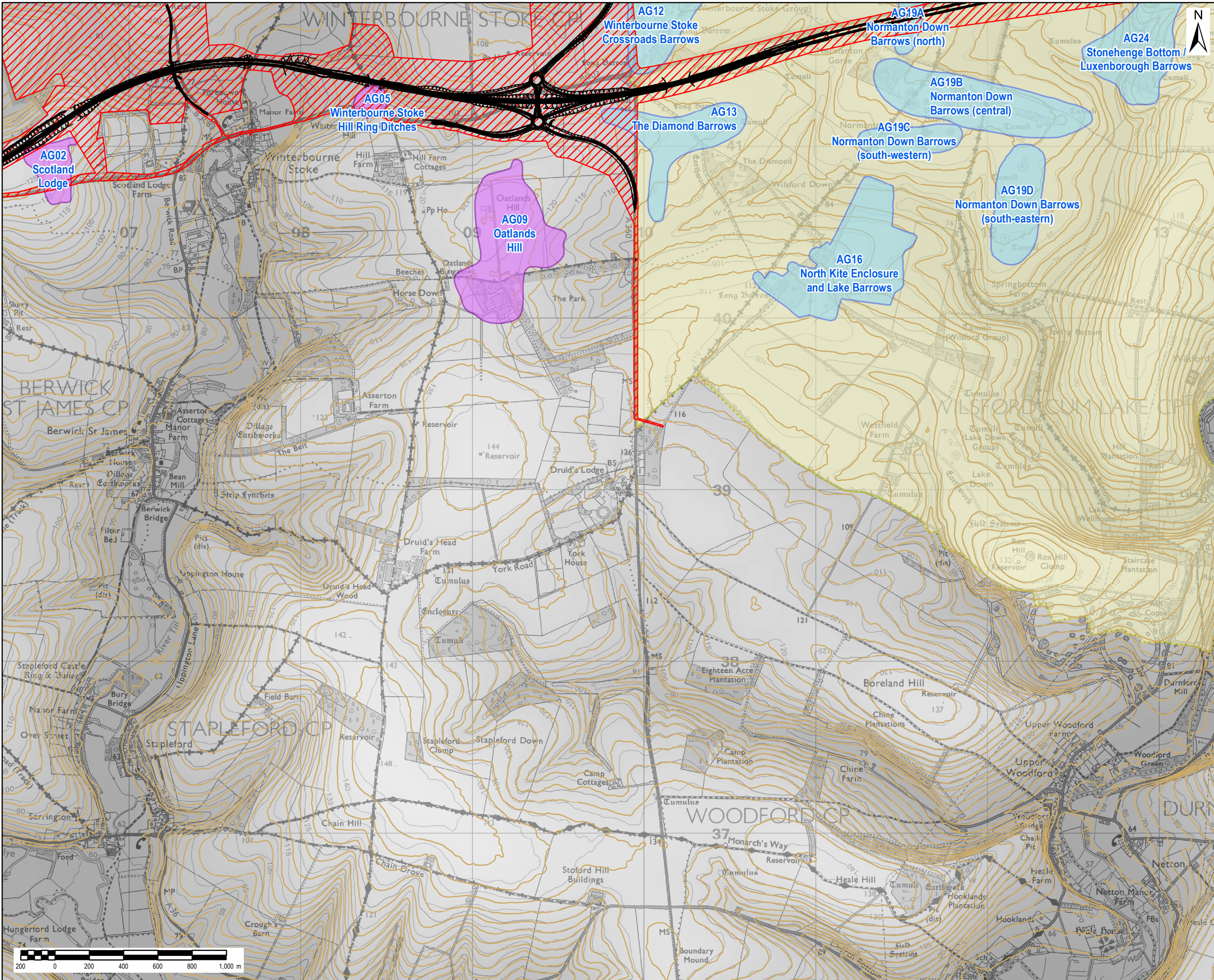
THIS DOCUMENT HAS BEEN PREPARED PURSUANT TO AND SUBJECT TO THE TERMS OF AECOM'S APPOINTMENT BY ITS CLIENT. AECOM ACCEPTS NO LIABILITY FOR ANY USE OF THIS DOCUMENT OTHER THAN BY ITS ORIGINAL CLIENT OR FOLLOWING AECOM'S EXPRESS AGREEMENT TO SUCH USE, AND ONLY FOR THE PURPOSES FOR WHICH IT WAS PREPARED AND PROVIDED.

Highways England
Temple Quay House
2 The Square, Temple Quay
Bristol
BS1 6HA

AECOM + mace + WSP

Drawing Number	Originator	Volume	Rev
HE551506	AMW	GEN	01

SCHEME WIDE	DR	GI	00349
Location	Type	Role	Number



- NOTES / LEGEND
- Proposed route alignment
 - Proposed structure
 - Proposed scheme boundary
 - 5m Contour Intervals
 - Asset Groups outside the WHS addressed in the Environmental Statement
 - Asset Groups within or with a relationship to the WHS
 - World Heritage Site

© Crown copyright and database rights 2017 Ordnance Survey 100030649.
Historic Environment Record (HER) © Wiltshire Council October 2017. Data reproduced with permission from Wiltshire Council Archaeology Service
© Historic England 2017. Contains Ordnance Survey data © Crown copyright and database right 2017. The Historic England GIS Data contained in this material was obtained on 09-11-2017. The most publicly available up to date Historic England GIS Data can be obtained from HistoricEngland.org.uk

Revision Details	By	Check	Date	Suffix

Purpose of issue
FINAL

Client
Highways England
Working on behalf of

Project Title
A303 AMESBURY TO BERWICK DOWN

Drawing Title
HIA FIGURE 9C
KEY MAP INDICATING THE
LOCATION OF ASSET GROUPS

Designed	Drawn	Checked	Approved	Date
LO	GM/TD	CC	LO	05/10/18

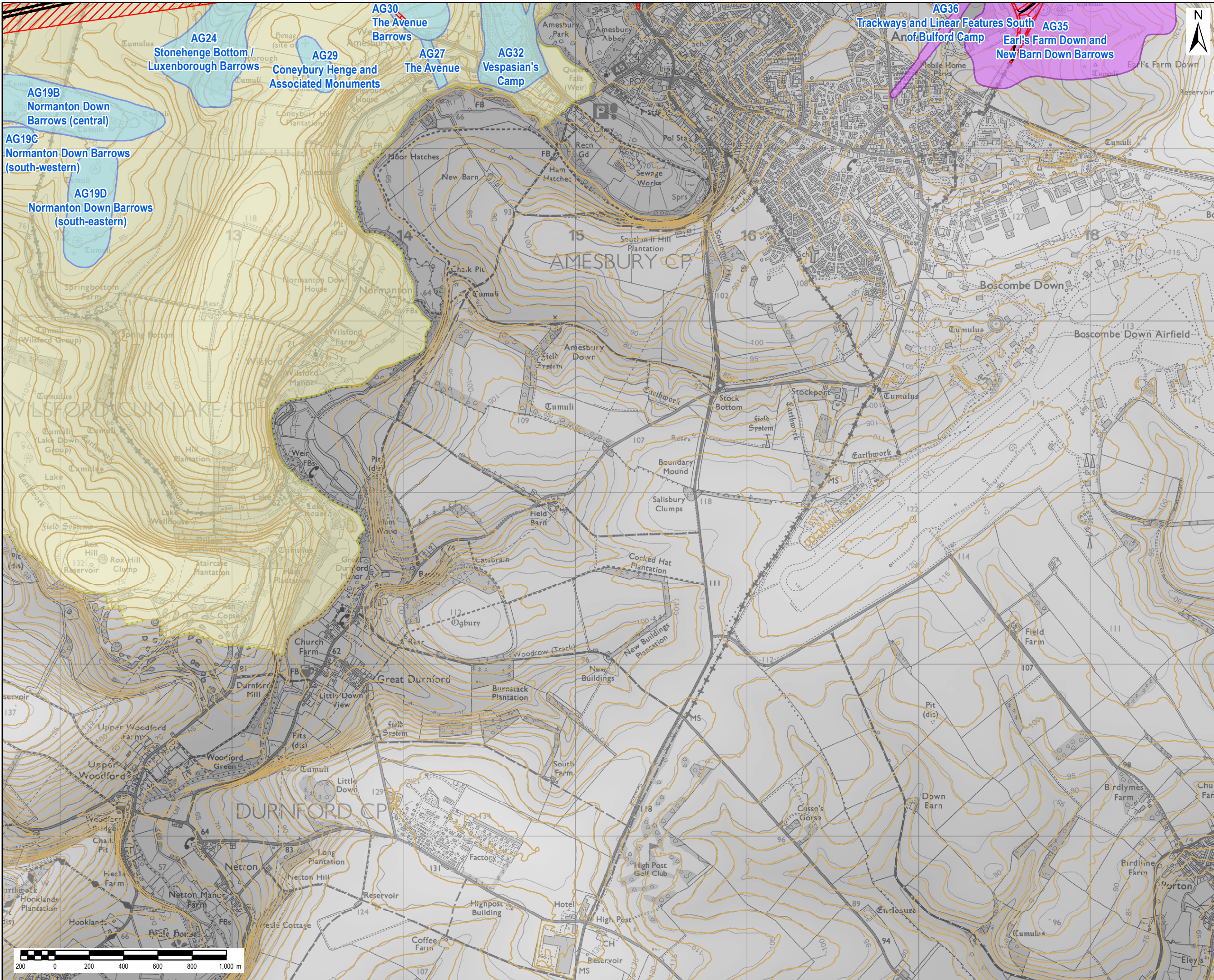
Internal Project No.	60541200
Scale @ A3	1:20,000
Zone	SW

THIS DOCUMENT HAS BEEN PREPARED PURSUANT TO AND SUBJECT TO THE TERMS OF AECOM'S APPOINTMENT BY ITS CLIENT. AECOM ACCEPTS NO LIABILITY FOR ANY USE OF THIS DOCUMENT OTHER THAN BY ITS ORIGINAL CLIENT OR FOLLOWING AECOM'S EXPRESS AGREEMENT TO SUCH USE, AND ONLY FOR THE PURPOSES FOR WHICH IT WAS PREPARED AND PROVIDED.

Highways England
Temple Quay House
2 The Square, Temple Quay
Bristol
BS1 6HA

AECOM + mace + WSP

Drawing Number	Originator	Volume	Rev
HE551506	AMW	GEN	01
Scheme Wide	DR	GI	00349
Location	Type	Role	Number

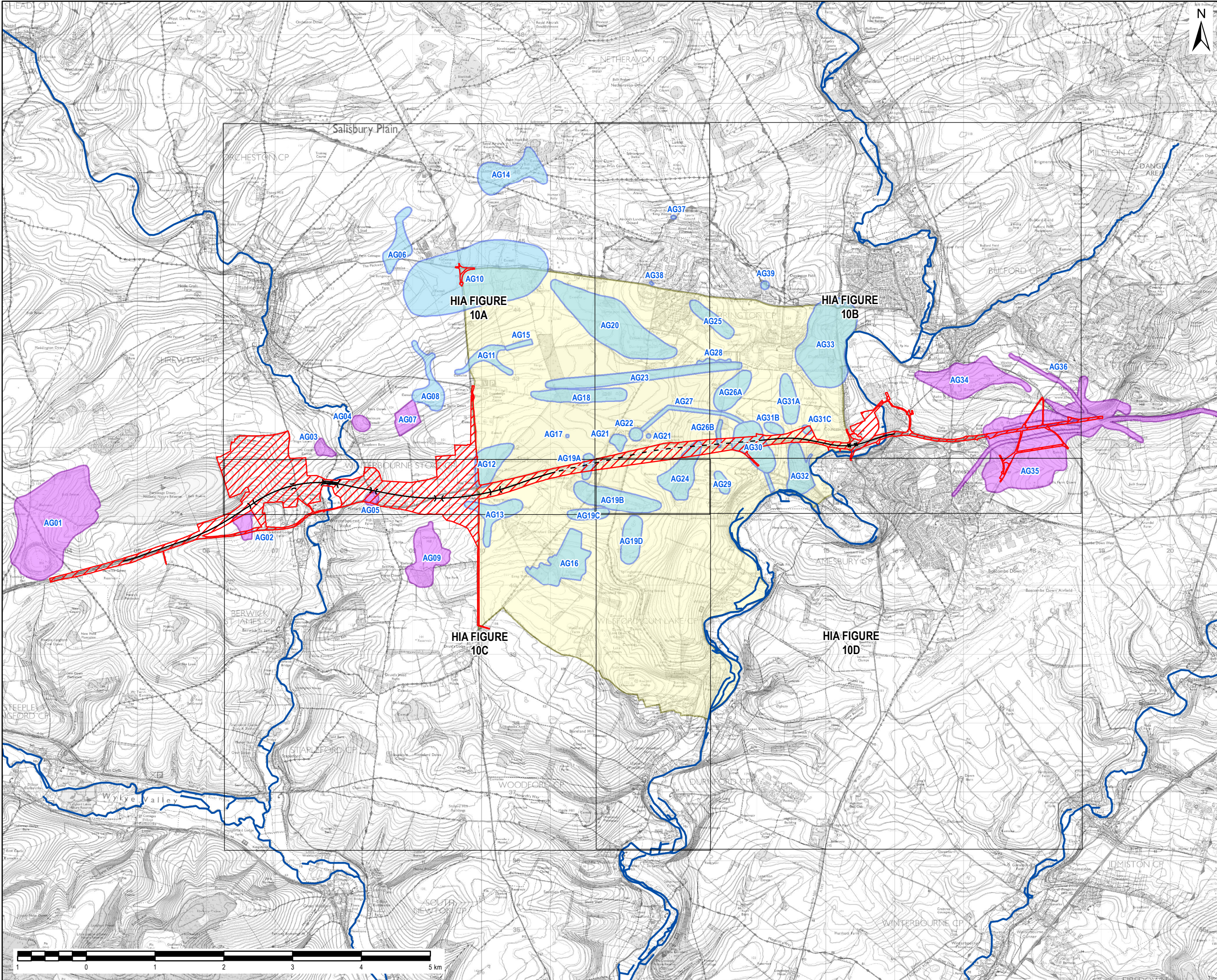


NOTES / LEGEND

- Proposed route alignment
- Proposed scheme boundary
- 5m Contour Intervals
- Asset Groups outside the WHS addressed in the Environmental Statement
- Asset Groups within or with a relationship to the WHS
- World Heritage Site

© Crown copyright and database rights 2017 Ordnance Survey 100030649.
Historic Environment Record (HER) © Wiltshire Council October 2017. Data reproduced with permission from Wiltshire Council Archaeology Service
© Historic England 2017. Contains Ordnance Survey data © Crown copyright and database right 2017. The Historic England GIS Data contained in this material was obtained on 09-11-2017. The most publicly available up to date Historic England GIS Data can be obtained from HistoricEngland.org.uk

Revision Details		By	Check	Date	Suffix
Purpose of issue		FINAL			
Client		Working on behalf of			
Highways England					
Project Title					
A303 AMESBURY TO BERWICK DOWN					
Drawing Title					
HIA FIGURE 9D KEY MAP INDICATING THE LOCATION OF ASSET GROUPS					
Designed	Drawn	Checked	Approved	Date	
LO	GM/TD	CC	LO	05/10/18	
Internal Project No.					
60541200					
Scale @ A3		Zone			
1:20,000		SW			
THIS DOCUMENT HAS BEEN PREPARED PURSUANT TO AND SUBJECT TO THE TERMS OF AECOM'S APPOINTMENT BY ITS CLIENT. AECOM ACCEPTS NO LIABILITY FOR ANY USE OF THIS DOCUMENT OTHER THAN BY ITS ORIGINAL CLIENT OR FOLLOWING AECOM'S EXPRESS AGREEMENT TO SUCH USE, AND ONLY FOR THE PURPOSES FOR WHICH IT WAS PREPARED AND PROVIDED.					
Highways England Temple Quay House 2 The Square, Temple Quay Bristol BS1 6HA					 AECOM + mace + WSP
Drawing Number	Originator	Volume	Rev		
HE551506	AMW	GEN			01
SCHEME WIDE		DR	GI	00349	
Location		Type	Role	Number	

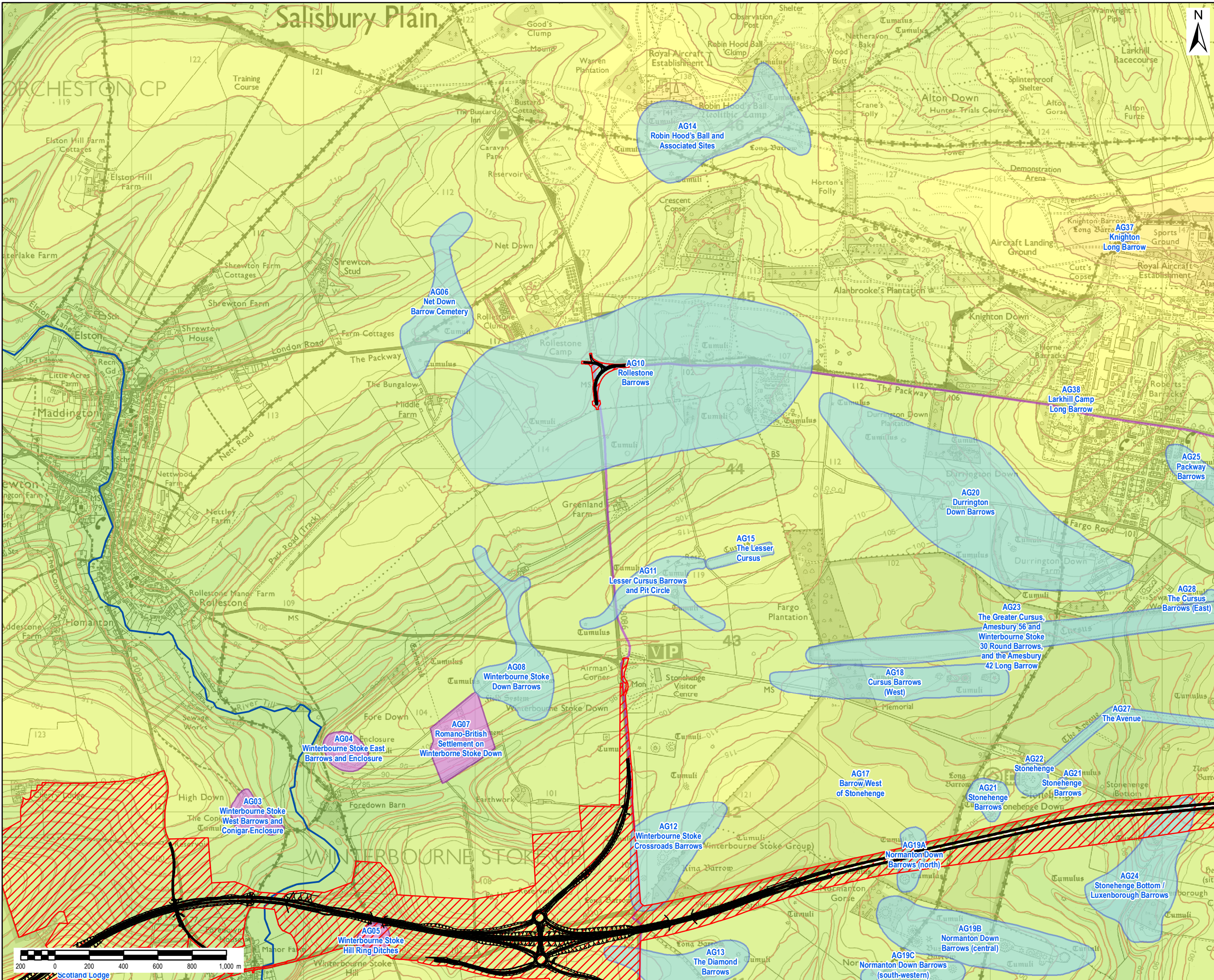


NOTES / LEGEND

- Indicative centreline
- Proposed scheme boundary
- Watercourse
- 5m Contour Intervals
- Watercourse
- Asset Groups outside the WHS addressed in the Environmental Statement
- Asset Groups within or with a relationship to the WHS
- World Heritage Site

© Crown copyright and database rights 2017 Ordnance Survey 100030649.
Historic Environment Record (HER) © Wiltshire Council October 2017. Data reproduced with permission from Wiltshire Council Archaeology Service
© Historic England 2017. Contains Ordnance Survey data © Crown copyright and database right 2017. The Historic England GIS Data contained in this material was obtained on 09-11-2017. The most publicly available up to date Historic England GIS Data can be obtained from HistoricEngland.org.uk

Revision Details	By	Check	Date	Suffix					
Purpose of issue	FINAL								
Client	Highways England								
	Working on behalf of								
Project Title	A303 AMESBURY TO BERWICK DOWN								
Drawing Title	HIA FIGURE 10 KEY MAP INDICATING THE LOCATION OF ASSET GROUPS IN RELATION TO TOPOGRAPHY AND WATER COURSES								
Designed	LO	Drawn	GM/TD	Checked	CC	Approved	LO	Date	04/09/18
Internal Project No.	60541200								
Scale @ A3	1:50,000		Zone	SW					
THIS DOCUMENT HAS BEEN PREPARED PURSUANT TO AND SUBJECT TO THE TERMS OF AECOM'S APPOINTMENT BY ITS CLIENT. AECOM ACCEPTS NO LIABILITY FOR ANY USE OF THIS DOCUMENT OTHER THAN BY ITS ORIGINAL CLIENT OR FOLLOWING AECOM'S EXPRESS AGREEMENT TO SUCH USE, AND ONLY FOR THE PURPOSES FOR WHICH IT WAS PREPARED AND PROVIDED.									
Highways England Temple Quay House 2 The Square, Temple Quay Bristol BS1 6HA									 AECOM + mace + WSP
Drawing Number	HE551506	Highways England PIN	AMW	Originator	AMW	Volume	GEN	Rev	01
SCHEME WIDE		DR	GI	00349					
Location		Type	Role	Number					



NOTES / LEGEND

- Proposed route alignment
- Proposed structure
- Proposed scheme boundary
- 5m Contour Intervals
- Watercourse
- Asset Groups outside the WHS addressed in the Environmental Statement
- Asset Groups within or with a relationship to the WHS
- World Heritage Site

Topography (m)

- >70 - 80
- >80 - 90
- >90 - 100
- >100 - 110
- >110 - 120
- >120 - 130
- >130 - 140
- >140 - 150

© Crown copyright and database rights 2017 Ordnance Survey 100030649.
Historic Environment Record (HER) © Wiltshire Council October 2017. Data reproduced with permission from Wiltshire Council Archaeology Service.
© Historic England 2017. Contains Ordnance Survey data © Crown copyright and database right 2017. The Historic England GIS Data contained in this material was obtained on 09-11-2017. The most publicly available up to date Historic England GIS Data can be obtained from HistoricEngland.org.uk

Revision Details		By	Check	Date	Suffix

Purpose of issue
FINAL

Client
Highways England

Working on behalf of
highways england

Project Title
A303 AMESBURY TO BERWICK DOWN

Drawing Title
FIGURE 10A - HIA KEY MAP INDICATING THE LOCATION OF ASSET GROUPS IN RELATION TO TOPOGRAPHY AND WATER COURSES

Designed	Drawn	Checked	Approved	Date
LO	GM/TD	CC	LO	
				05/10/18

Internal Project No.
60541200

Scale @ A3
1:20,000

Zone
SW

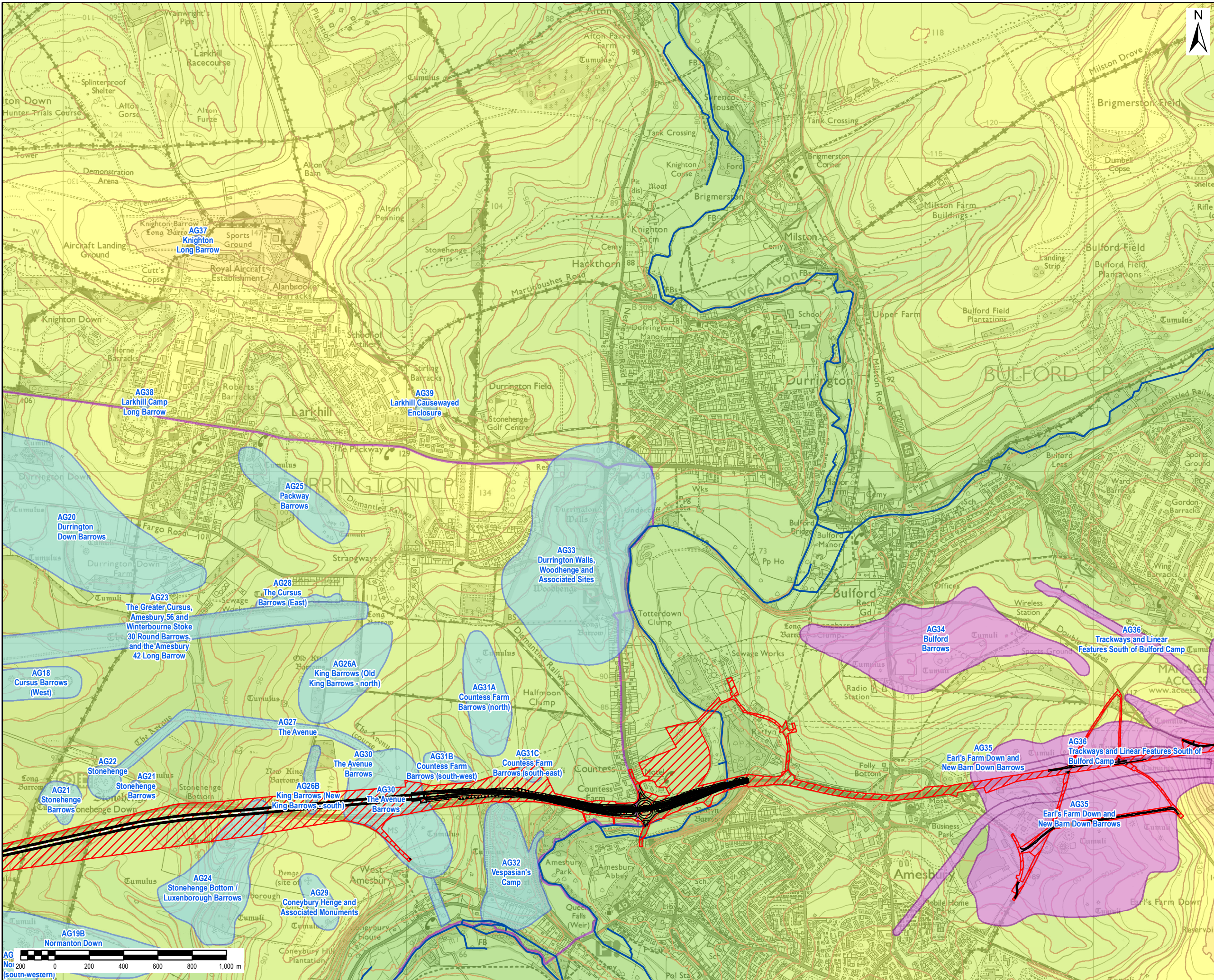
THIS DOCUMENT HAS BEEN PREPARED PURSUANT TO AND SUBJECT TO THE TERMS OF AECOM'S APPOINTMENT BY ITS CLIENT. AECOM ACCEPTS NO LIABILITY FOR ANY USE OF THIS DOCUMENT OTHER THAN BY ITS ORIGINAL CLIENT OR FOLLOWING AECOM'S EXPRESS AGREEMENT TO SUCH USE, AND ONLY FOR THE PURPOSES FOR WHICH IT WAS PREPARED AND PROVIDED.

Highways England
Temple Quay House
2 The Square, Temple Quay
Bristol
BS1 6HA

AmW
AECOM + mace + WSP

Drawing Number	Originator	Volume	Rev
HE551506	AMW	GEN	01

SCHEME WIDE	DR	GI	00349
Location	Type	Role	Number



NOTES / LEGEND

Proposed route alignment

Proposed structure

Proposed scheme boundary

5m Contour Intervals

Watercourse

Asset Groups outside the WHS addressed in the Environmental Statement

Asset Groups within or with a relationship to the WHS

World Heritage Site

Topography (m)

>60 - 70

>70 - 80

>80 - 90

>90 - 100

>100 - 110

>110 - 120

>120 - 130

>130 - 140

>140 - 150

>150 - 160

>160 - 170

Revision Details

By

Check

Date

Suffix

Purpose of issue

FINAL

Client

Highways England

Working on behalf of

highways

england

Project Title

A303 AMESBURY TO BERWICK DOWN

Drawing Title

FIGURE 10B - HIA
KEY MAP INDICATING THE LOCATION OF
ASSET GROUPS IN RELATION TO
TOPOGRAPHY AND WATER COURSES

Designed

LO

Drawn

GM/TD

Checked

CC

Approved

LO

Date

05/10/18

Internal Project No.

60541200

Scale @ A3

1:20,000

Zone

SW

THIS DOCUMENT HAS BEEN PREPARED PURSUANT TO AND SUBJECT TO THE
TERMS OF AECOM'S APPOINTMENT BY ITS CLIENT. AECOM ACCEPTS NO
LIABILITY FOR ANY USE OF THIS DOCUMENT OTHER THAN BY ITS ORIGINAL
CLIENT OR FOLLOWING AECOM'S EXPRESS AGREEMENT TO SUCH USE, AND
ONLY FOR THE PURPOSES FOR WHICH IT WAS PREPARED AND PROVIDED.

Highways England
Temple Quay House
2 The Square, Temple Quay
Bristol
BS1 6HA

AmW

AECOM + mace + WSP

Drawing Number

HE551506

Originator

AMW

Volume

GEN

Rev

01

SCHEME WIDE

DR

GI

00349

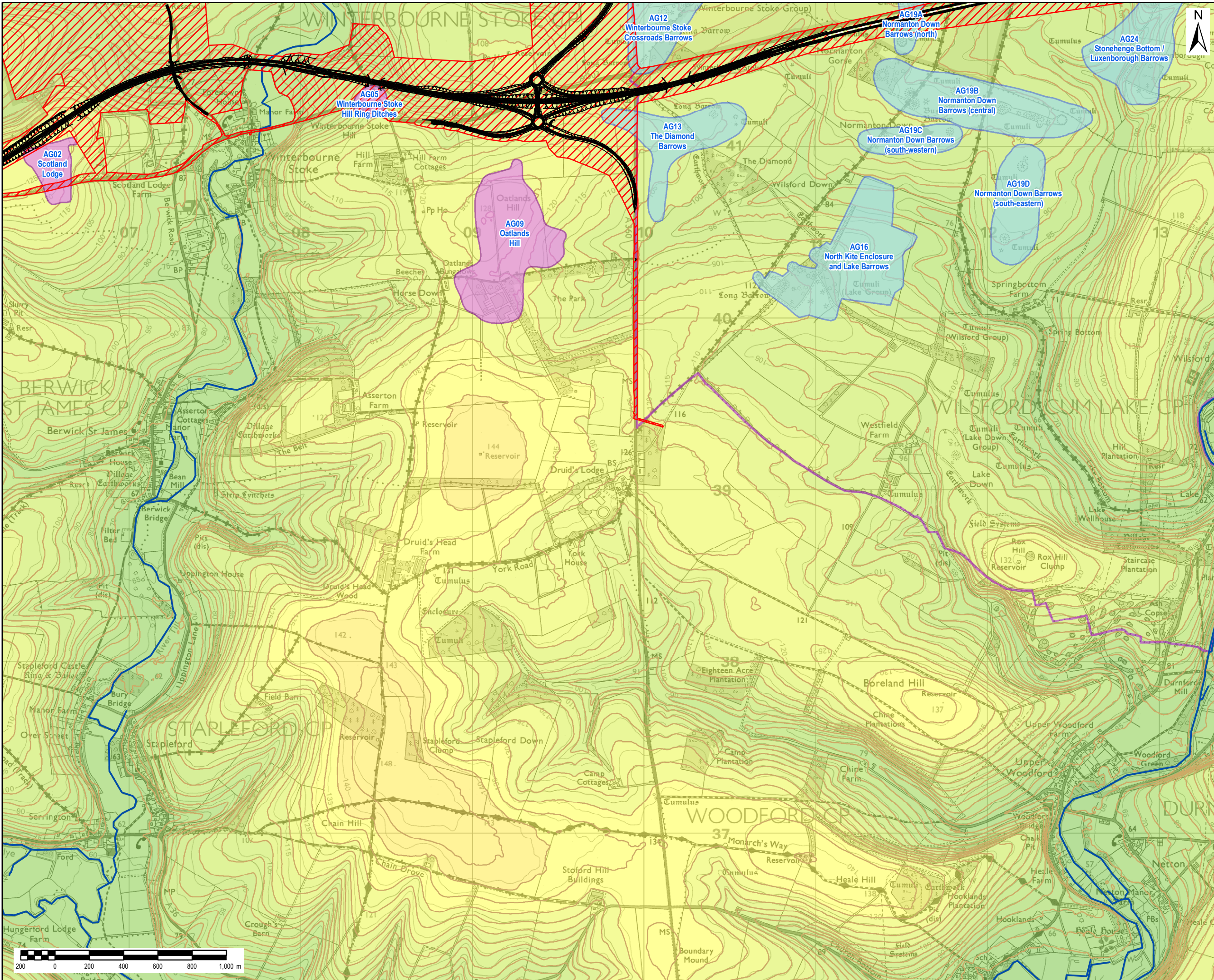
Location

Type

Role

Number

Filename: pw:\UKLON3AP114.aecomonline.local\PWAECOM_EU\Documents\60541439-A303 Stonehenge Technical Partner\0300 Non Deliverables\0330 Environmental Management Team\GIS\Figures\HE551506-AMW-DR-GI-00385.mxd



NOTES / LEGEND

- Proposed route alignment
- Proposed structure
- Proposed scheme boundary
- 5m Contour Intervals
- Watercourse
- Asset Groups outside the WHS addressed in the Environmental Statement
- Asset Groups within or with a relationship to the WHS
- World Heritage Site

Topography (m)

>50 - 60
>60 - 70
>70 - 80
>80 - 90
>90 - 100
>100 - 110
>110 - 120
>120 - 130
>130 - 140
>140 - 150

© Crown copyright and database rights 2017 Ordnance Survey 100030649.
Historic Environment Record (HER) © Wiltshire Council October 2017. Data reproduced with permission from Wiltshire Council Archaeology Service
© Historic England 2017. Contains Ordnance Survey data © Crown copyright and database right 2017. The Historic England GIS Data contained in this material was obtained on 09-11-2017. The most publicly available up to date Historic England GIS Data can be obtained from HistoricEngland.org.uk

Revision Details	By	Check	Date	Suffix

Purpose of issue

FINAL

Client

Highways England

Working on behalf of

highways england

Project Title

A303 AMESBURY TO BERWICK DOWN

Drawing Title

FIGURE 10C - HIA
KEY MAP INDICATING THE LOCATION OF ASSET GROUPS IN RELATION TO TOPOGRAPHY AND WATER COURSES

Designed	Drawn	Checked	Approved	Date
LO	GM/TD	CC	LO	05/10/18

Internal Project No.

60541200

Scale @ A3	Zone
1:20,000	SW

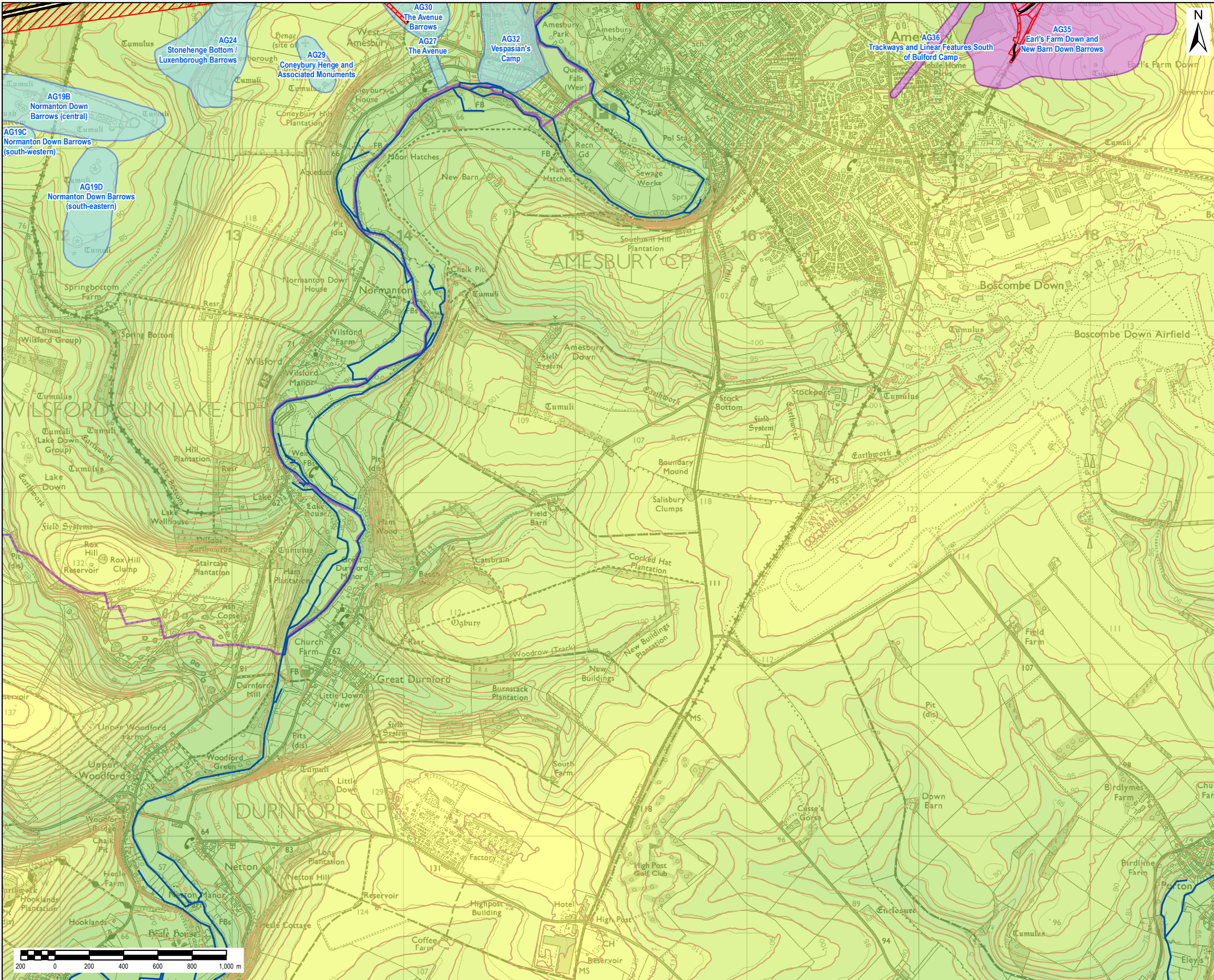
THIS DOCUMENT HAS BEEN PREPARED PURSUANT TO AND SUBJECT TO THE TERMS OF AECOM'S APPOINTMENT BY ITS CLIENT. AECOM ACCEPTS NO LIABILITY FOR ANY USE OF THIS DOCUMENT OTHER THAN BY ITS ORIGINAL CLIENT OR FOLLOWING AECOM'S EXPRESS AGREEMENT TO SUCH USE, AND ONLY FOR THE PURPOSES FOR WHICH IT WAS PREPARED AND PROVIDED.

Highways England
Temple Quay House
2 The Square, Temple Quay
Bristol
BS1 6HA

AmW
AECOM + mace + WSP

Drawing Number	Highways England PIN	Originator	Volume	Rev
HE551506	AMW	GEN	01	

SCHEME WIDE	DR	GI	00349
Location	Type	Role	Number



NOTES / LEGEND

Proposed route alignment

Proposed scheme boundary

5m Contour Intervals

Watercourse

Asset Groups outside the WHS addressed in the Environmental Statement

Asset Groups within or with a relationship to the WHS

World Heritage Site

Topography (m)

>50 - 60

>60 - 70

>70 - 80

>80 - 90

>90 - 100

>100 - 110

>110 - 120

>120 - 130

>130 - 140

>140 - 150

© Crown copyright and database rights 2017 Ordnance Survey 100030649.
Historic Environment Record (HER) © Wiltshire Council October 2017. Data reproduced with permission from Wiltshire Council Archaeology Service
© Historic England 2017. Contains Ordnance Survey data © Crown copyright and database right 2017. The Historic England GIS Data contained in this material was obtained on 09-11-2017. The most publicly available up to date Historic England GIS Data can be obtained from HistoricEngland.org.uk

Revision Details	By	Check	Date	Suffix

Purpose of issue

FINAL

Client

Highways England

Working on behalf of

Project Title

A303 AMESBURY TO BERWICK DOWN

Drawing Title

FIGURE 10D - HIA
KEY MAP INDICATING THE LOCATION
OF ASSET GROUPS IN RELATION TO
TOPOGRAPHY AND WATER COURSES

Designed

LO

Drawn

GM/TD

Checked

CC

Approved

LO

Date

05/10/18

Internal Project No.

60541200

Scale @ A3

1:20,000

Zone

SW

THIS DOCUMENT HAS BEEN PREPARED PURSUANT TO AND SUBJECT TO THE TERMS OF AECOM'S APPOINTMENT BY ITS CLIENT. AECOM ACCEPTS NO LIABILITY FOR ANY USE OF THIS DOCUMENT OTHER THAN BY ITS ORIGINAL CLIENT OR FOLLOWING AECOM'S EXPRESS AGREEMENT TO SUCH USE, AND ONLY FOR THE PURPOSES FOR WHICH IT WAS PREPARED AND PROVIDED.

Highways England
Temple Quay House
2 The Square, Temple Quay
Bristol
BS1 6HA

AECOM + mace + WSP

Drawing Number

HE551506

Originator

AMW

Volume

GEN

Rev

01

SCHEME WIDE

DR

GI

00349

Location

Type

Role

Number

Filename: pw:\UKLON3AP114.aecomonline.local\PWAECOM_EU\Documents\60541439-A303 Stonehenge Technical Partner\0300 Non Deliverables\0330 Environmental Management Team\GIS\Figures\HE551506-AMW-DR-GI-00385.mxd