

M25 junction 28 improvement scheme

TR010029

2.7 Scheme layout plans

APFP Regulation 5(2)(o)
Planning Act 2008

Infrastructure Planning (Applications: Prescribed Forms and Procedure) Regulations 2009



Infrastructure Planning

Planning Act 2008

The Infrastructure Planning (Applications: Prescribed Forms and Procedure) Regulations 2009

M25 junction 28 improvement scheme Development Consent Order 202[x]

2.7 SCHEME LAYOUT PLANS

Regulation Number:	Regulation 5(2)(o)
Planning Inspectorate Scheme Reference	TR010029
Application Document Reference	TR010029/APP/2.7
Author:	M25 junction 28 scheme, Project Team, Highways England

Version	Date	Status of Version
<u>1</u>	<u>April 2021</u>	<u>Deadline 5, incorporated changes 1-4</u>
0	May 2020	Application issue

Table of contents

Chapter	Pages
1. Introduction	4
2. Schedule of plans included in this application document	5

1. Introduction

- 1.1.1 Highways England (the “Applicant”) has applied to the Secretary of State for a Development Consent Order (“DCO”) to authorise a scheme for alterations to the M25 junction 28 (the “Scheme”). The application is submitted to the Planning Inspectorate (the “Inspectorate”) in accordance with section 37 of the Planning Act 2008 (the “2008 Act”).
- 1.1.2 This document comprises part of the suite of application documents and is submitted in compliance with Regulation 5(2)(o) of the Infrastructure Planning (Applications: Prescribed Forms and Procedures) Regulations 2009, which requires:
- 5(2)(o) ‘any other plans, drawings and sections necessary to describe the proposals for which development consent is sought, showing details of design, external appearance, and the preferred layout of buildings and structures, drainage, surface water management, means of vehicular and pedestrian access, any car parking to be provided, and means of landscaping;’*
- 1.1.3 The Scheme layout plans have been included in the application to show the key features of the Scheme for which development consent is sought, for example, the proposed highway works and the areas of environmental mitigation.

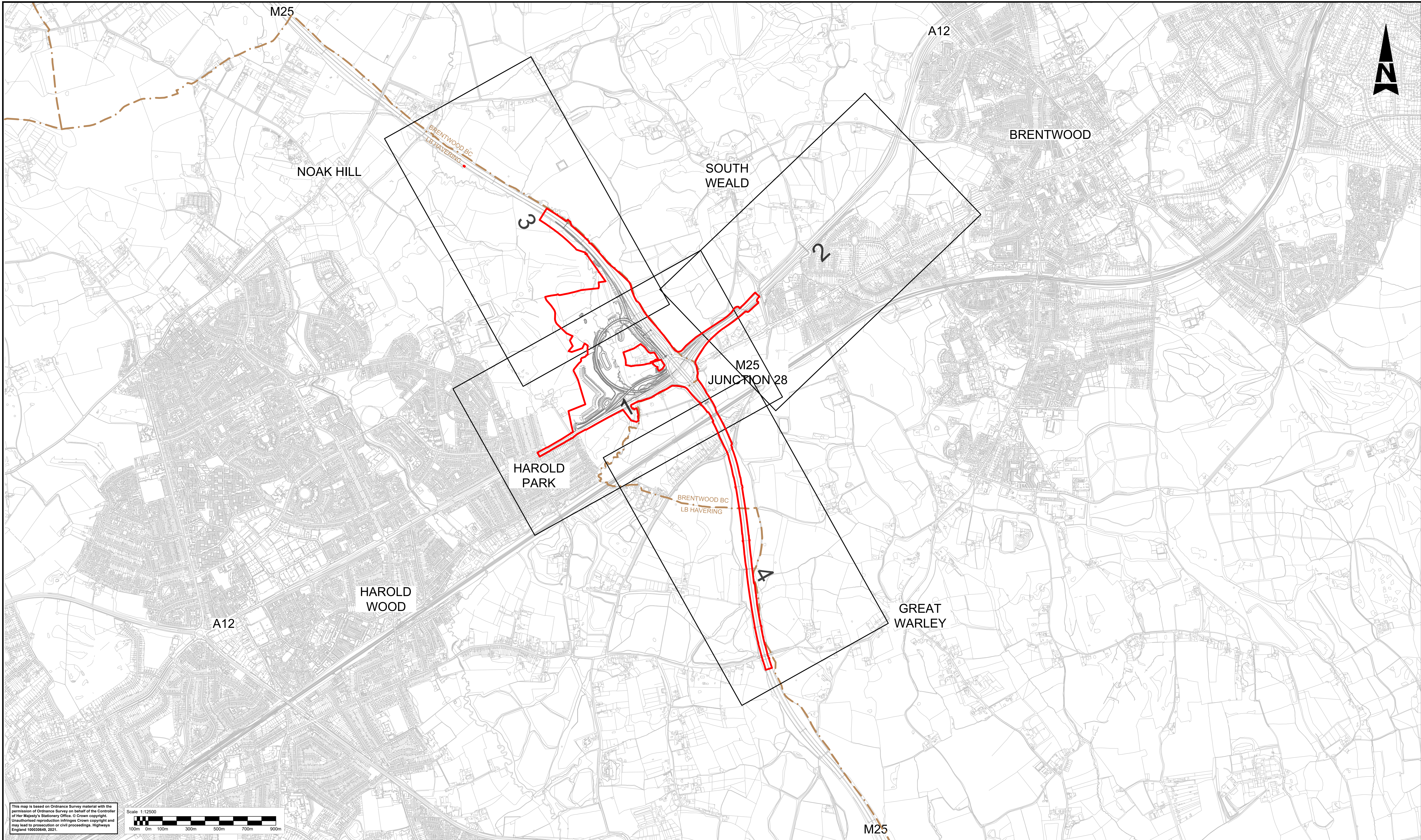
2. Schedule of plans included in this application document

4.1.52.1.1 Scheme layout plans (Key Plan, Sheet 1 and 3 of 4) have been updated at Deadline 5.

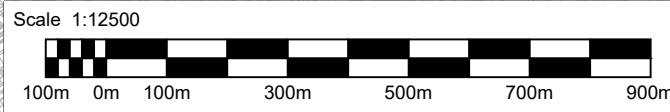
Document title	Document number	Version
Scheme layout plans - Regulation 5(2)(o) Key Plan	TR010029/APP/2.7	0 <u>1</u>
Scheme layout plans - Regulation 5(2)(o) Sheet 1 of 4	TR010029/APP/2.7	0 <u>1</u>
Scheme layout plans - Regulation 5(2)(o) Sheet 2 of 4	TR010029/APP/2.7	0
Scheme layout plans - Regulation 5(2)(o) Sheet 3 of 4	TR010029/APP/2.7	0 <u>1</u>
Scheme layout plans - Regulation 5(2)(o) Sheet 4 of 4	TR010029/APP/2.7	0

DO NOT SCALE

0 10 100
Millimetres



This map is based on Ordnance Survey material with the permission of Ordnance Survey on behalf of the Controller of Her Majesty's Stationery Office. © Crown copyright. Unauthorized reproduction infringes Crown copyright and may lead to prosecution or civil proceedings. Highways England 100030649, 2021.



LEGEND:

2

SHEET NUMBER FOR SCHEME LAYOUT IN THIS AREA



—

DEVELOPMENT CONSENT ORDER (DCO) BOUNDARY

- - -

LOCAL AUTHORITY BOUNDARY

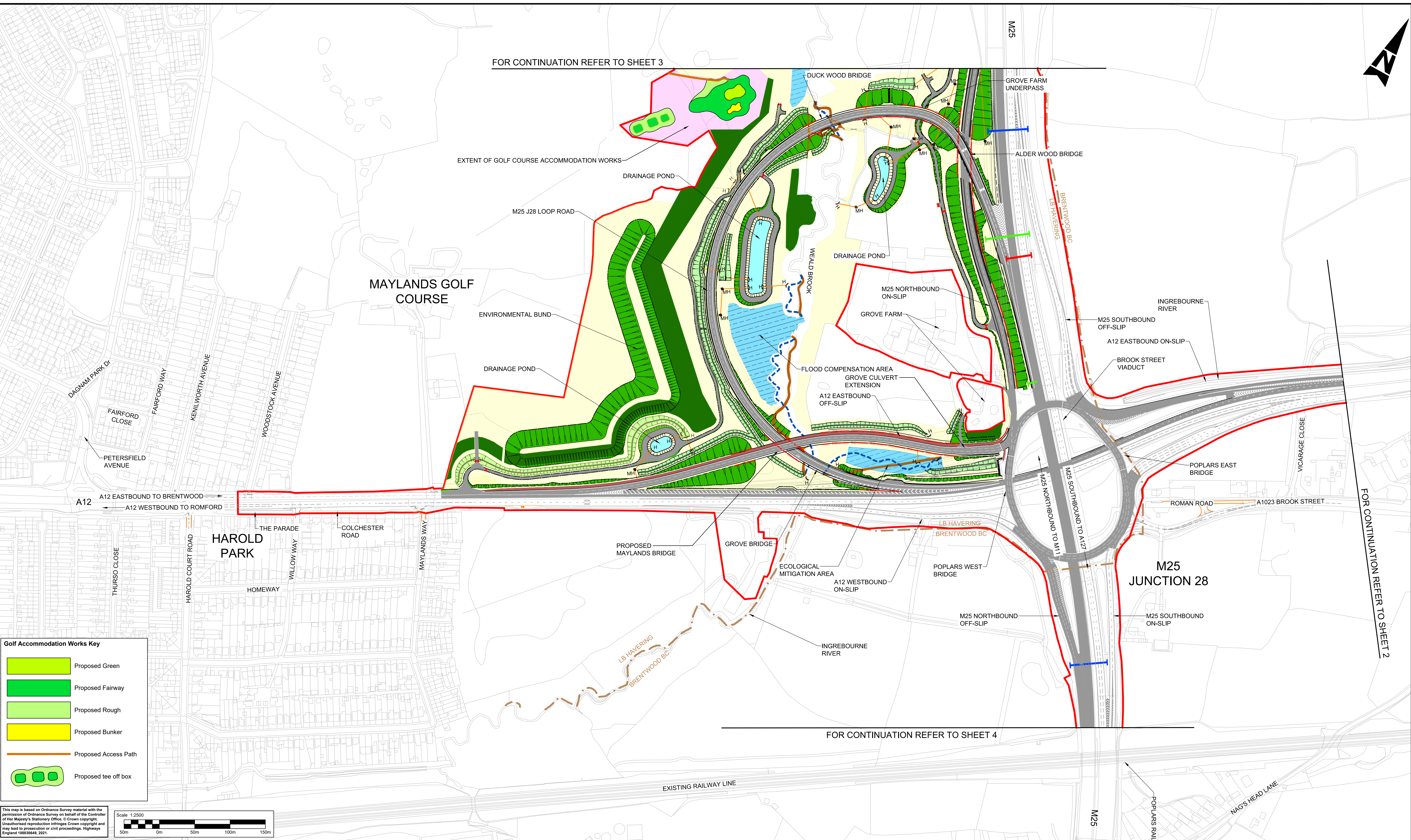
Description						
Status	Revision	Drawn	Checked	Reviewed	Authorised	Issue Date
Description						
Status	Revision	Drawn	Checked	Reviewed	Authorised	Issue Date
Description						
Status	Revision	Drawn	Checked	Reviewed	Authorised	Issue Date
Description						
Status	Revision	Drawn	Checked	Reviewed	Authorised	Issue Date
Description						

Drawing Suitability		Status	Project Title	
DCO EXAMINATION		A4	M25 junction 28 improvement scheme	
 SNC • LAVALIN ATKINS Member of the SNC-Lavalin Group Copyright © SNC Lavalin (2020)		Amlin House Atkins 4th Floor 90-96 Victoria Road Chelmsford Essex CM1 1QU Tel: +44 (0)1245 245245 Fax: +44 (0)1245 345010 www.atkinsglobal.com		
Client		Drawing Number		Rev:
 Working on behalf of		TR010029/APP/2.7		1
HE PIN: HE551519		Scale: 1:12500	Original Size: A1	

DO NOT SCALE

100
0 10
Millimetres

FOR CONTINUATION REFER TO SHEET 3



FOR CONTINUATION REFER TO SHEET 2

FOR CONTINUATION REFER TO SHEET 4

Golf Accommodation Works Key

- Proposed Green
- Proposed Fairway
- Proposed Rough
- Proposed Bunker
- Proposed Access Path
- Proposed tee off box

This map is based on Ordnance Survey material with the permission of Ordnance Survey on behalf of the Controller of Her Majesty's Stationary Office. © Crown copyright. Unauthorised reproduction infringes Crown copyright and may lead to prosecution or civil proceedings. Highways England 100030649, 2021.

Scale 1:2500

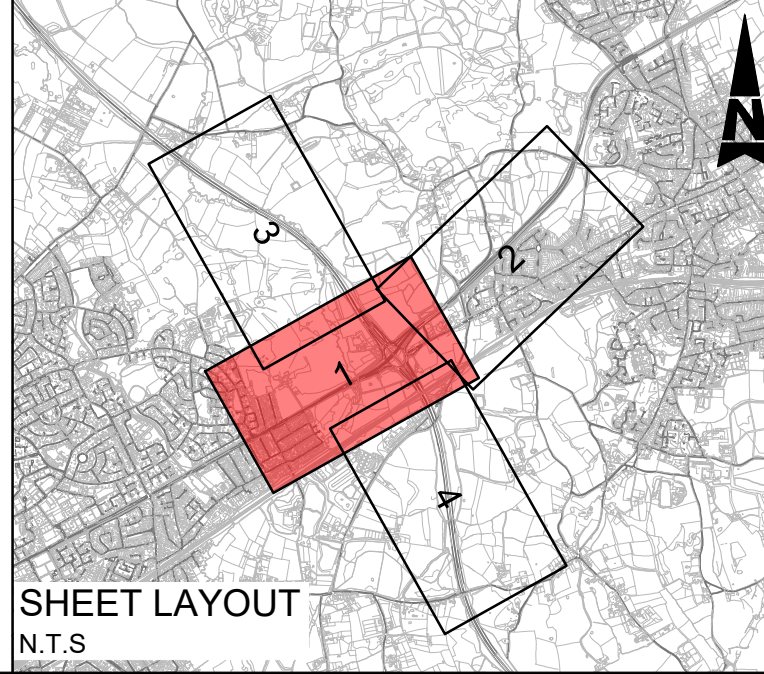
50m 0m 50m 100m 150m

NOTES:

1. This drawing illustrates the layout for the M25 Junction 28 Improvement scheme.

LEGEND

- DCO boundary
- Local Authority boundary
- Carriageway/ access track and existing carriageway resurfacing
- Earthworks
- Earthworks (varying slope)
- Footway
- Existing gantry (to be removed)
- Existing gantry to be retained with signs to be replaced
- Proposed Gantry / cantilever
- Retaining wall
- Realignment of watercourses
- Existing watercourse removed
- Drainage ditch
- Drainage headwall and manhole outside carriageway footprint
- Drainage pipe (outside of carriageway footprint)
- Gate
- Lighting column
- Environmental mitigation area/grassland (see Figure 2.2 in the ES (application document TR010029/6.2) for further details)
- Golf Course accommodation works (For more details on proposals, refer to Golf Accommodation Works Key)
- Native woodland
- Ground lowering for flood compensation or ecological mitigation

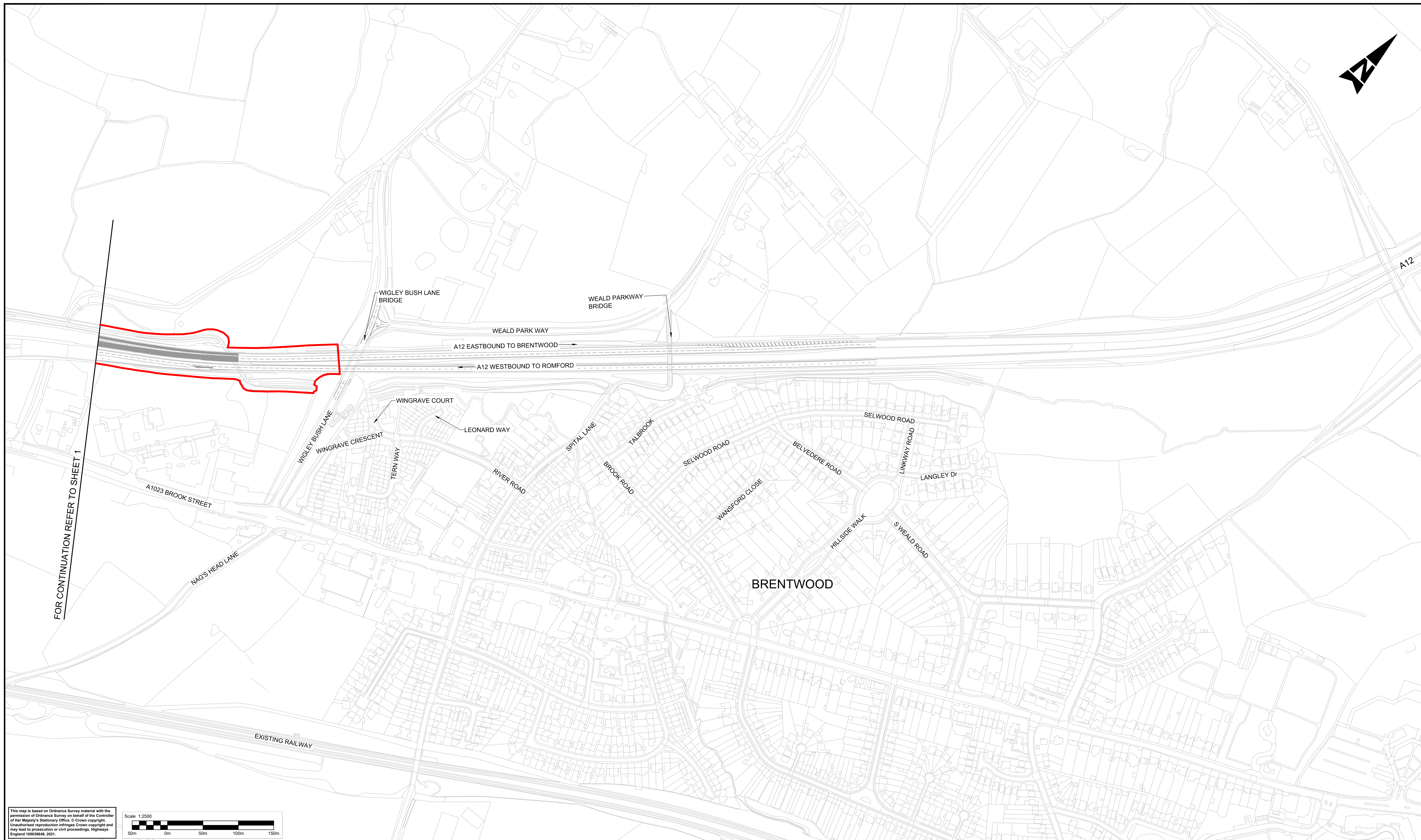


Description						
Status	Revision	Drawn	Checked	Reviewed	Authorised	Issue Date
Description						
Status	Revision	Drawn	Checked	Reviewed	Authorised	Issue Date
Description						
Status	Revision	Drawn	Checked	Reviewed	Authorised	Issue Date
Description						
Status	Revision	Drawn	Checked	Reviewed	Authorised	Issue Date

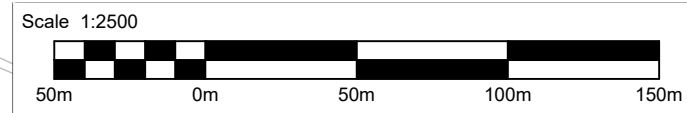
Drawing Suitability	DCO EXAMINATION	Status	A4	Project Title	M25 junction 28 improvement scheme
		Amlin House Atkins 4th Floor 90-96 Victoria Road Chelmsford Essex CM1 1QU Tel: +44 (0)1245 245245 Fax: +44 (0)1245 345010 www.atkinsglobal.com		Drawing Title SCHEME LAYOUT PLANS REGULATION 5(2)(o) SHEET 1 OF 4	
Client	Working on behalf of 	Drawing Number	TR010029/APP/2.7	Rev.	1
HE PIN: HE551519		Scale: 1:2500	Original Size: A1		

DO NOT SCALE

100
0 10
Millimetres



This map is based on Ordnance Survey material with the permission of Ordnance Survey on behalf of the Controller of Her Majesty's Stationery Office. © Crown copyright. Unauthorised reproduction infringes Crown copyright and may lead to prosecution or civil proceedings. Highways England 100030649, 2021.



NOTES:

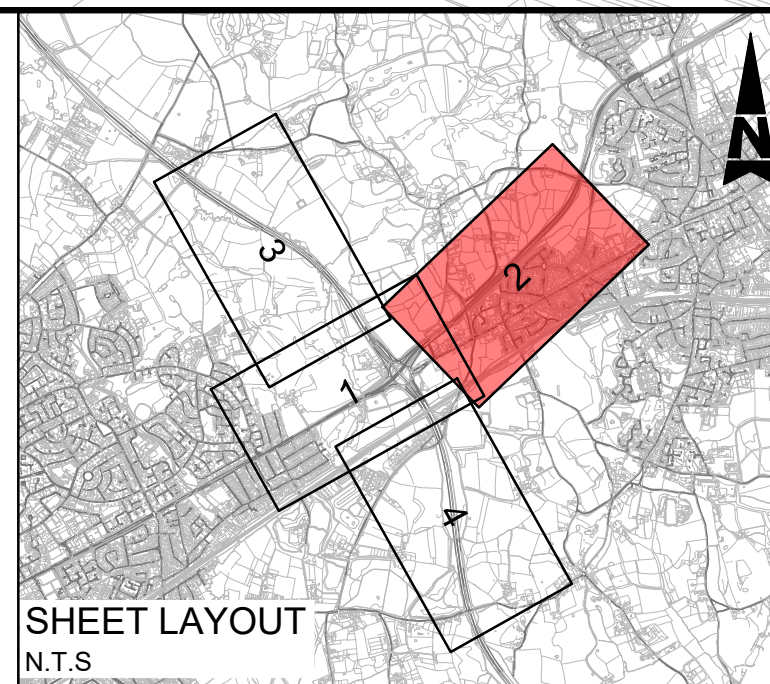
1. This drawing illustrates the layout for the M25 Junction 28 Improvement scheme.

LEGEND



- DCO boundary
- Local Authority boundary
- Carriageway/ access track and existing carriageway resurfacing
- Earthworks
- Earthworks (varying slope)

- Footway
- Existing gantry (to be removed)
- Existing gantry to be retained with signs to be replaced
- Proposed Gantry / cantilever
- Retaining wall
- Realignment of watercourses
- Existing watercourse removed
- Drainage ditch
- Drainage headwall and manhole outside carriageway footprint

- Drainage pipe (outside of carriageway footprint)
- Gate
- Lighting column
- Environmental mitigation area/grassland (see Figure 2.2 in the ES (application document TR010029/6.2) for further details)
- Golf Course accommodation works (For more details on proposals, refer to Golf Accommodation Works Key)
- Native woodland
- Ground lowering for flood compensation or ecological mitigation



Description						
Status	Revision	Drawn	Checked	Reviewed	Authorised	Issue Date
Description						
Status	Revision	Drawn	Checked	Reviewed	Authorised	Issue Date
Description						
Status	Revision	Drawn	Checked	Reviewed	Authorised	Issue Date
Description						
Status	Revision	Drawn	Checked	Reviewed	Authorised	Issue Date

Drawing Suitability		Status	Project Title	
DCO APPLICATION		A4	M25 junction 28 improvement scheme	
 SNC • LAVALIN ATKINS Member of the SNC-Lavalin Group Copyright © SNC Lavalin (2020)		Amlin House Atkins 4th Floor 90-96 Victoria Road Chelmsford Essex CM1 1QU Tel: +44 (0)1245 245245 Fax: +44 (0)1245 345010 www.atkinsglobal.com		Drawing Title SCHEME LAYOUT PLANS REGULATION 5(2)(o) SHEET 2 OF 4
Client		Drawing Number		Rev.
Working on behalf of  highways england		TR010029/APP/2.7		0
HE PIN: HE551519		Scale: 1:2500		Original Size: A1

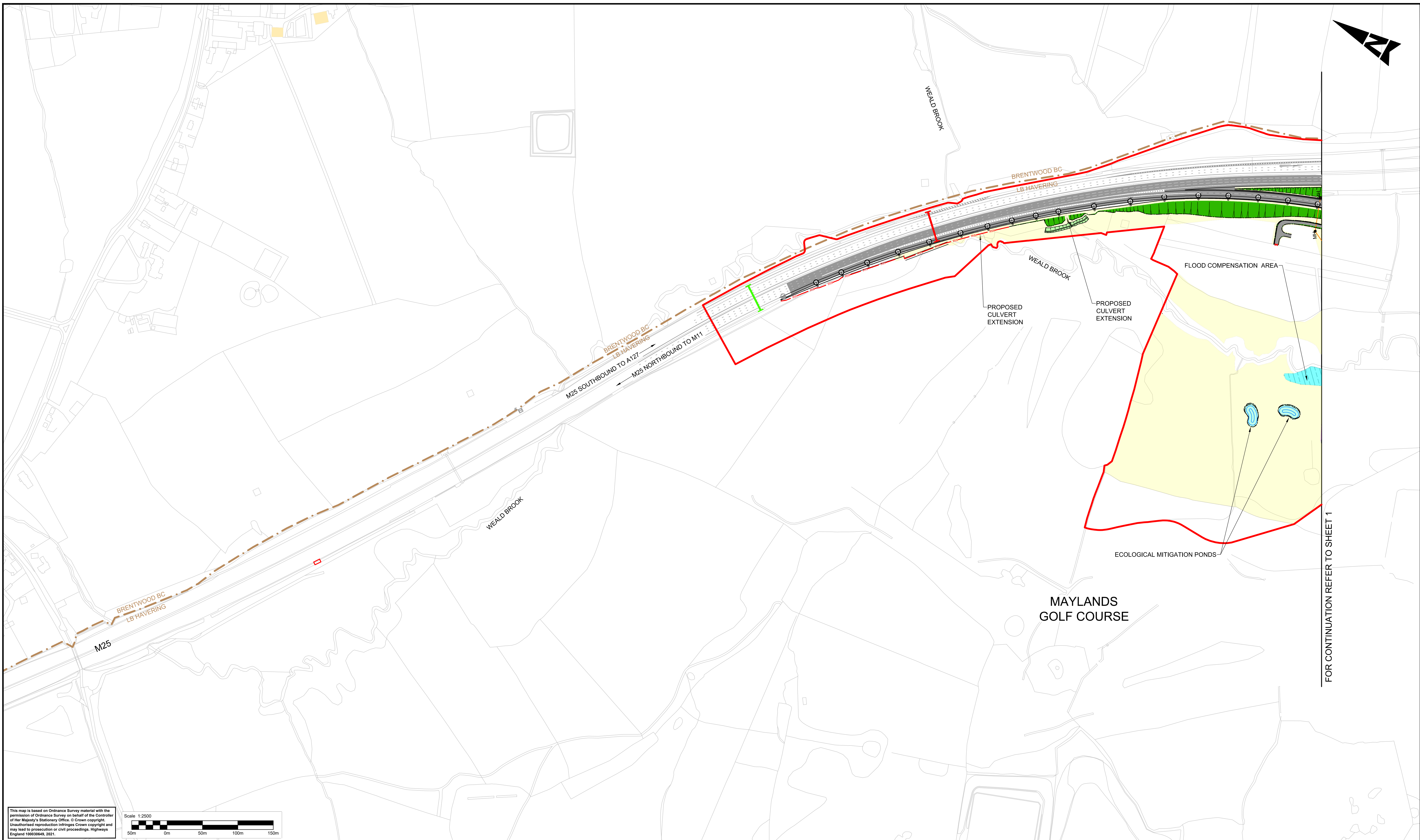
DO NOT SCALE

Millimetres

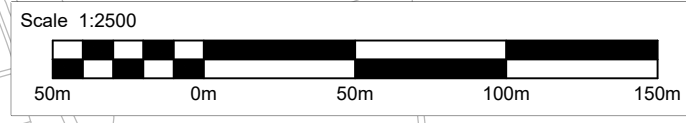
0

10

100



This map is based on Ordnance Survey material with the permission of Ordnance Survey on behalf of the Controller of Her Majesty's Stationery Office. © Crown copyright. Unauthorised reproduction infringes Crown copyright and may lead to prosecution or civil proceedings. Highways England 100030649, 2021.



NOTES:

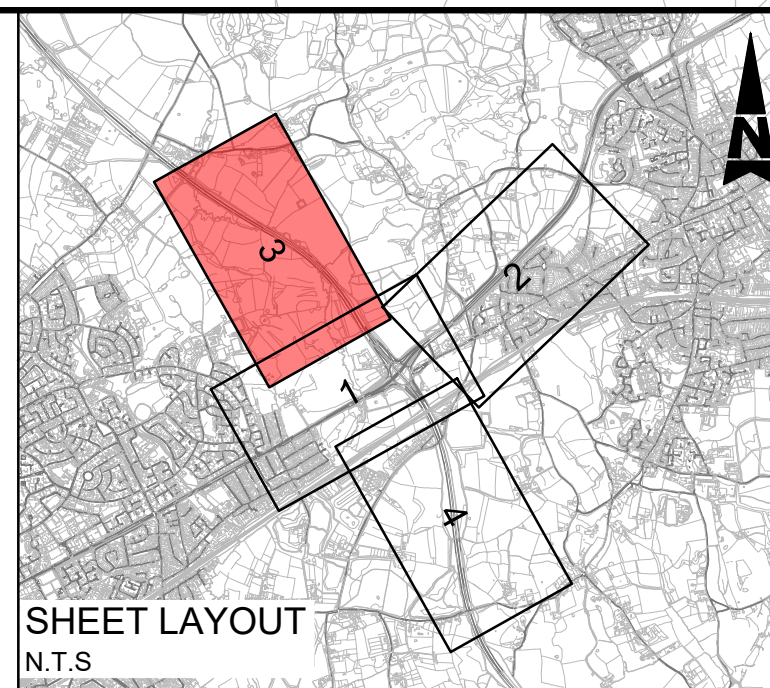
1. This drawing illustrates the layout for the M25 Junction 28 Improvement scheme.

LEGEND

- DCO boundary
Local Authority boundary
Carriageway/ access track and existing carriageway resurfacing
Earthworks
Earthworks (varying slope)



- Footway
Existing gantry (to be removed)
Existing gantry to be retained with signs to be replaced
Proposed Gantry / cantilever
Retaining wall
Realignment of watercourses
Existing watercourse removed
Drainage ditch
Drainage headwall and manhole outside carriageway footprint

- Drainage pipe (outside of carriageway footprint)
Gate
Lighting column
Environmental mitigation area/grassland (see Figure 2.2 in the ES (application document TR010029/6.2) for further details)
Golf Course accommodation works (For more details on proposals, refer to Golf Accommodation Works Key)
Native woodland
Ground lowering for flood compensation or ecological mitigation



SHEET LAYOUT
N.T.S

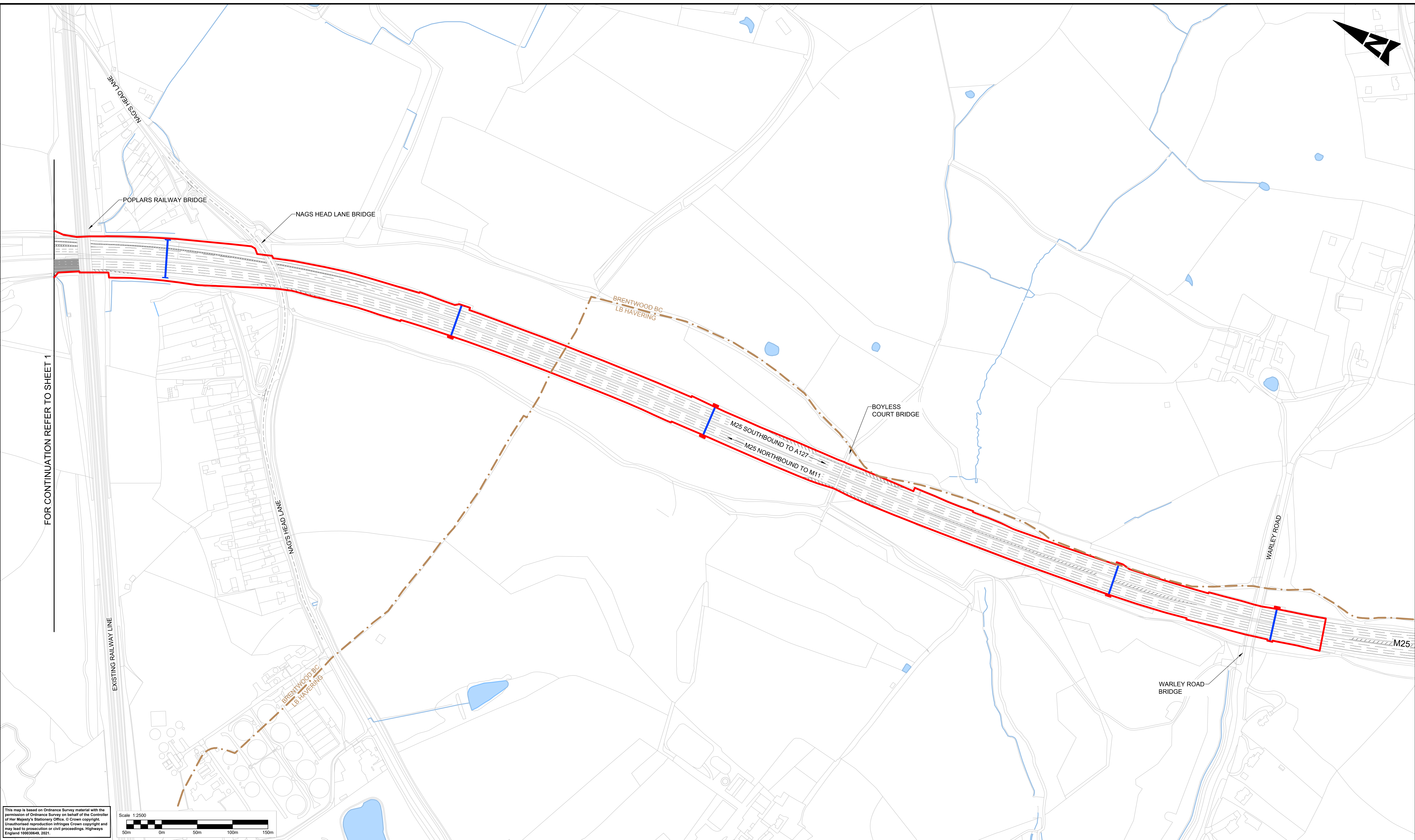
Description						
Status	Revision	Drawn	Checked	Reviewed	Authorised	Issue Date
Description						
Status	Revision	Drawn	Checked	Reviewed	Authorised	Issue Date
Description						
Status	Revision	Drawn	Checked	Reviewed	Authorised	Issue Date
Description						
Status	Revision	Drawn	Checked	Reviewed	Authorised	Issue Date

Drawing Suitability		Status		Project Title		
DCO EXAMINATION		A4		M25 junction 28 improvement scheme		
 SNC • LAVALIN ATKINS Member of the SNC-Lavalin Group Copyright © SNC Lavalin (2020)		Amlin House Atkins 4th Floor 90-96 Victoria Road Chelmsford Essex CM1 1QU Tel: +44 (0)1245 245245 Fax: +44 (0)1245 345010 www.atkinsglobal.com		Drawing Title SCHEME LAYOUT PLANS REGULATION 5(2)(o) SHEET 3 OF 4		
Client		Working on behalf of  highways england		Drawing Number TR010029/APP/2.7		Rev: 1
HE PIN: HE551519		Scale: 1:2500		Original Size: A1		

DO NOT SCALE

100
0 10
Millimetres

FOR CONTINUATION REFER TO SHEET 1



This map is based on Ordnance Survey material with the permission of Ordnance Survey on behalf of the Controller of Her Majesty's Stationary Office. © Crown copyright. Unauthorised reproduction infringes Crown copyright and may lead to prosecution or civil proceedings. Highways England 10003649, 2021.

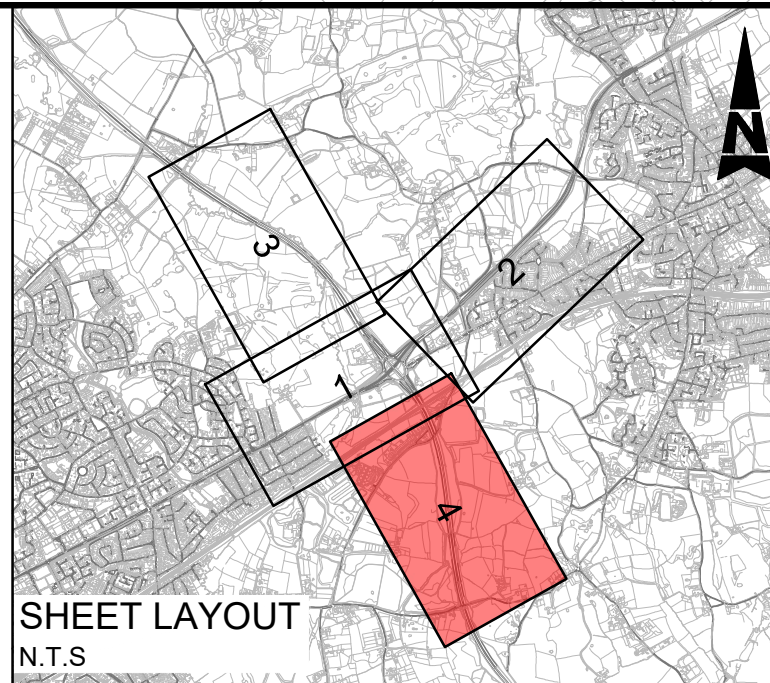


NOTES:

- This drawing illustrates the layout for the M25 Junction 28 Improvement scheme.

LEGEND

	DCO boundary		Footway		Drainage pipe (outside of carriageway footprint)
	Local Authority boundary		Existing gantry (to be removed)		Gate
	Carriageway/ access track and existing carriageway resurfacing		Existing gantry to be retained with signs to be replaced		Lighting column
	Earthworks		Proposed Gantry / cantilever		Environmental mitigation area/grassland (see Figure 2.2 in the ES (application document TR010029/6.2) for further details)
	Earthworks (varying slope)		Retaining wall		Golf Course accommodation works (For more details on proposals, refer to Golf Accommodation Works Key)
			Realignment of watercourses		Native woodland
			Existing watercourse removed		Ground lowering for flood compensation or ecological mitigation
			Drainage ditch		
			Drainage headwall and manhole outside carriageway footprint		



Description	Status	Revision	Drawn	Checked	Reviewed	Authorised	Issue Date
Description	Status	Revision	Drawn	Checked	Reviewed	Authorised	Issue Date
Description	Status	Revision	Drawn	Checked	Reviewed	Authorised	Issue Date
Description	Status	Revision	Drawn	Checked	Reviewed	Authorised	Issue Date
Description	Status	Revision	Drawn	Checked	Reviewed	Authorised	Issue Date
Description	Status	Revision	Drawn	Checked	Reviewed	Authorised	Issue Date

Drawing Suitability	DCO APPLICATION	Status	A4	Project Title	M25 junction 28 improvement scheme
	Atkins		Working on behalf of	Drawing Title	SCHEME LAYOUT PLANS REGULATION 5(2)(o) SHEET 4 OF 4
Amlin House Atkins 4th Floor 90-96 Victoria Road Chelmsford Essex CM1 1QU Tel: +44 (0)1245 245245 Fax: +44 (0)1245 345010 www.atkinsglobal.com		Client		Drawing Number	TR010029/APP/2.7
Member of the SNC-Lavalin Group Copyright © SNC Lavalin (2020)		Rev.		0	
HE PIN: HE551519		Scale: 1:2500		Original Size: A1	

© Crown copyright (2021)

You may re-use this information (not including logos) free of charge in any format or medium, under the terms of the Open Government Licence. To view this licence:

visit www.nationalarchives.gov.uk/doc/open-government-licence/
write to the Information Policy Team, **The National Archives, Kew, London TW9 4DU**,
or email psi@nationalarchives.gsi.gov.uk.

Printed on paper from well-managed forests and other controlled sources.

Registered office Bridge House, 1 Walnut Tree Close, Guilford GU1 4LZ
Highways England Company Limited registered in England and Wales number 09346363

