

M25 junction 28 improvement scheme

TR010029

9.128 Draft Unilateral Undertaking to LB Havering and Brentwood BC

Rule 8(1)(k)

Planning Act 2008

Infrastructure Planning (Examination Procedure) Rules 2010

Volume 9

June 2021

Infrastructure Planning

Planning Act 2008

The Infrastructure Planning (Examination Procedure) Rules 2010

M25 junction 28 scheme Development Consent Order 202[x]

9.128 Draft Unilateral Undertaking to LB Havering and Brentwood BC

Rule Number:	Rule 8(1)(k)
Planning Inspectorate Scheme Reference	TR010029
Application Document Reference	TR010029/APP/9.128
Author:	M25 junction 28 improvement scheme Highways England

Version	Date	Status of Version
0	30 June 2021	Deadline 9

Table of contents

Chapter	Pages
1. Introduction	4
2. Draft Unilateral obligation	5

1. Introduction

- 1.1.1 At the Issue Specific Hearing on 12 May 2021 (ISH3), Highways England explained that it proposes to secure the central part of the proposed upgrade of a route for non-motorised users (NMUs) by way of a section 106 planning obligation, given under a planning agreement or failing agreement a unilateral planning obligation.
- 1.1.2 Although there have been constructive discussions and correspondence between the relevant parties an agreement has not been reached and it appears unlikely that an agreement will be reached and completed before the close of the examination on 7 July 2021.
- 1.1.3 Accordingly Highways England has prepared a short unilateral obligation under section 106 of the Town and Country Planning Act 1990. In short it requires Highways England to construct the central part of the wider NMU route (the central part being, in essence, the part of the route as it passes through junction 28) before the loop road comprised in the DCO scheme (i.e. Work No. 6 in the dDCO) is opened to traffic.
- 1.1.4 The draft acknowledges the wider NMU route from Brentwood to Harold Hill, designated funds for which have been approved by Highways England. However, regulation of the works to construct the wider route is beyond the scope of the obligation and also beyond the scope of the ExA's concerns regarding delivery of the central section. Highways England appreciates, however, that provision of the wider route depends upon agreements being reached with the relevant highway authorities, namely Essex County Council to the east of Junction 28 and TfL to the west of it.

2. Draft Unilateral obligation

DATED

(1) HIGHWAYS ENGLAND COMPANY LIMITED

TO

(2) THE LONDON BOROUGH OF HAVERING

AND

(3) BRENTWOOD BOROUGH COUNCIL

**UNILATERAL OBLIGATION UNDER SECTION 106 TOWN AND
COUNTRY PLANNING ACT 1990
WORKS TO M25 JUNCTION 28 - NON MOTORISED USERS**

THIS PLANNING OBLIGATION is given the day of 2021

BY

- (1) **HIGHWAYS ENGLAND COMPANY LIMITED** (Company number 09346363) of Bridge House, 1 Walnut Tree Close, Guildford GU1 4LZ (“Highways England”)

TO

- (2) **THE LONDON BOROUGH OF HAVERING** of Town Hall, Main Road, Romford, RM1 3BB (“LBH”);

AND

- (3) **BRENTWOOD BOROUGH COUNCIL** of Town Hall, Ingrave Road, Brentwood, Essex CM15 8AY (“BBC”)

BACKGROUND

- (A) Highways England has made an application (the “Application”) for a development consent order (“DCO”) to improve junction 28 of the M25 (“Junction 28”)
- (B) The Application is the subject of an examination under the Planning Act 2008 that began on 7 January 2021 and which is due to end on 7 July 2021
- (C) Highways England is willing to fund and construct a scheme (the “NMU Scheme”) to improve facilities for non-motorised users along a route from Brentwood to Harold Hill
- (D) The route of the NMU Scheme passes through Junction 28 and Highways England is willing to construct the part of the NMU Scheme that passes through Junction 28 at the same time as the scheme the subject of the Application is being constructed
- (E) The Junction Section falls within the area for which LBH and BBC are the local planning authorities
- (F) The works comprised within the Junction Section are permitted development under Part 9 of Schedule 2 of The Town and Country Planning (General Permitted Development) (England) Order 2015

1 DEFINITIONS

“**Loop Road**” means the road comprising Work No. 6 in the draft DCO the subject of the Application as at the date of this deed

“**NMU Scheme**” means the scheme shown on the plans at Annex 1 of this obligation and which comprises improvements to facilities for non-motorised users between the junction of Kavanaghs Road and Brook Street (A1023) to the junction of Green Way and Harold Court Road

“**Junction Section**” means that part of the NMU Scheme shown within the area edged by a dotted red line on the plan at Annex 2 of this obligation for which part Highways England is the highway authority and which comprises the works described in the schedule to this obligation

- 2 This is a planning obligation made under section 106 of the Town and Country Planning Act 1990 and which is enforceable by LBH and BBC as regards their respective areas
- 3 Highways England is the freehold owner of the land shown edged by a dotted red line on the plan at Annex 2 under HMLR title numbers EGL545805, EGL545065, EX326047, EGL541621, EX821546 and EX822515 and also comprising unregistered land which is the relevant land in which Highways England is interested for the purposes of Section 106(9)(b) of the Town and Country Planning Act 1990
- 4 Highways England undertakes to construct the Junction Section to an appropriate standard commensurate with its use by members of the general public no later than the date by which the Loop Road is opened to the general public for traffic

The Schedule

The works comprise the construction of a new shared footway and cycleway surfaced in asphalt that is 3 metres wide (except for a short length that is 2.7 metres wide), the works being illuminated by street lighting, including associated relocation and adjustment of existing road restraint systems, the provision of pedestrian guard railings, remodelled earthworks and signage. Existing traffic signals to be modified and converted to toucan crossings with button controls for pedestrians and cyclists

This obligation has been executed as a deed and is delivered and takes effect on the date stated at the beginning of it.

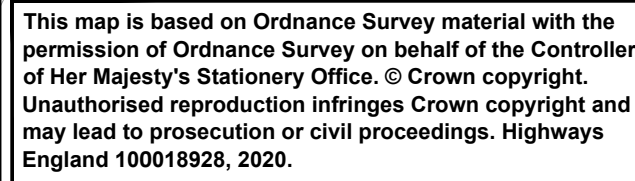
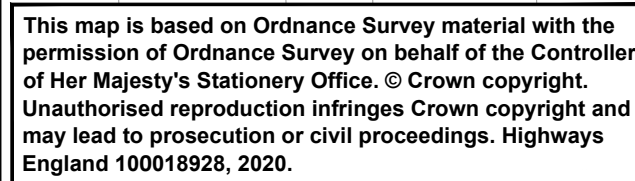
Executed as a deed by affixing the)	
common seal of HIGHWAYS ENGLAND)	
COMPANY LIMITED in the presence of)	[COMMON SEAL]

.....
Director

.....
[Director or Secretary]

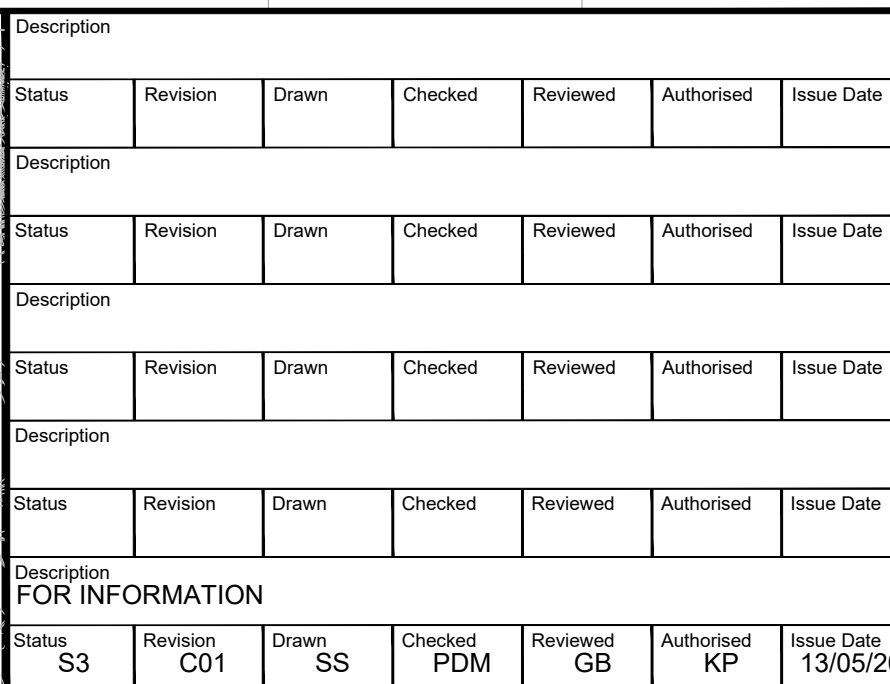
ANNEX 1



Plans showing the NMU Scheme



- ## SAFETY, HEALTH AND ENVIRONMENTAL INFORMATION

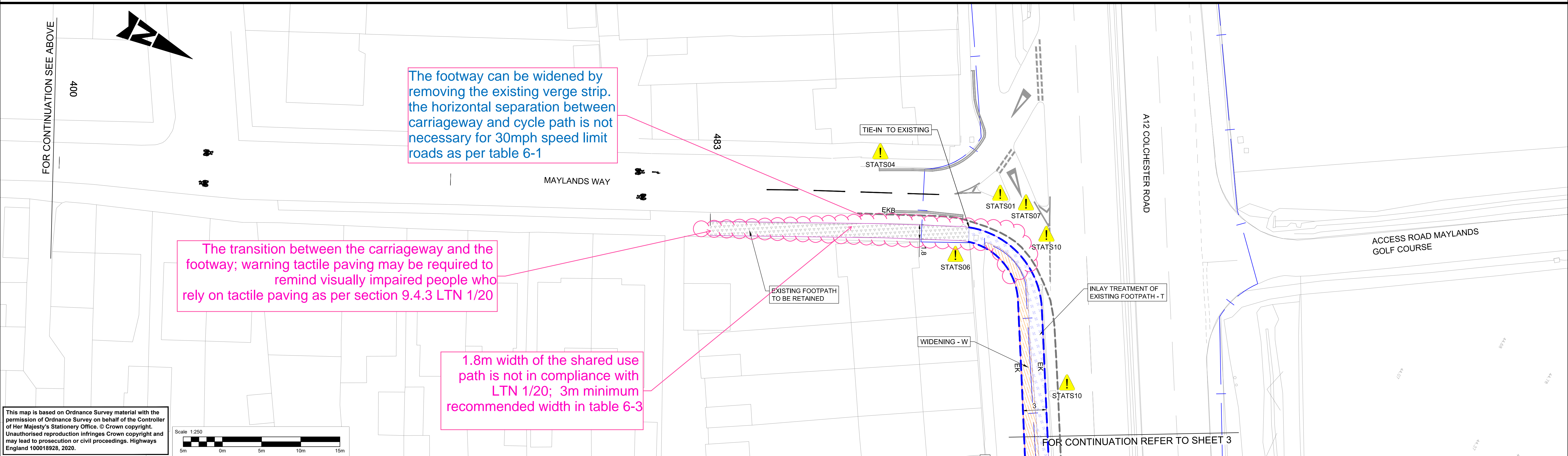
Construction
STAT501 - Working close to UK Power networks (UKPN).
STAT504 - Working close to Thames Water_Water (TW).
STAT505 - Working close to W.
STAT506 - Working close to Virgin Media (V-M).
STAT507 - Working close to GL.
STAT510 - Working close to BTO
Working adjacent to live traffic
Working with hot materials
Maintenance / Cleaning
NONE IDENTIFIED AT THIS STAGE
Use
Dust And Noise Pollution
Decommissioning / Demolition
NONE IDENTIFIED AT THIS STAGE



Drawing Suitability		Status S3		Project Title M25 J28 Designated Funds Detailed Design																																											
 SNC • LAVALIN ATKINS Member of the SNC-Lavalin Group Copyright © SNC Lavalin (2019)		Amlin House Atkins 4th Floor 90-96 Victoria Road Chelmsford Essex CM1 1QU Tel: +44 (0)1245 245245 Fax: +44 (0)1245 345010 www.atkinsglobal.com		Drawing Title M25 J28 SHARED PATH KERBS & PAVEMENT LAYOUT																																											
Client 		<table border="1"> <tr> <td colspan="2">Drawing Number</td> <td colspan="2"> Originator</td> <td colspan="2"> Volume</td> </tr> <tr> <td colspan="2">Project</td> <td colspan="2">HE601750 - ATK</td> <td colspan="2">- HKF -</td> </tr> <tr> <td colspan="2"></td> <td colspan="2">XX_ML</td> <td colspan="2">- DR - CH - 001101</td> </tr> <tr> <td colspan="2">Location</td> <td>Type</td> <td>Role</td> <td colspan="2">Number</td> </tr> <tr> <td>Original Size:</td> <td>A1</td> <td>Scale:</td> <td>1:250</td> <td>Project Ref. No:</td> <td>5158157</td> </tr> <tr> <td></td> <td></td> <td></td> <td></td> <td>Sheet:</td> <td>1 of 10</td> </tr> <tr> <td></td> <td></td> <td></td> <td></td> <td>Rev:</td> <td>C01</td> </tr> </table>				Drawing Number		Originator		Volume		Project		HE601750 - ATK		- HKF -				XX_ML		- DR - CH - 001101		Location		Type	Role	Number		Original Size:	A1	Scale:	1:250	Project Ref. No:	5158157					Sheet:	1 of 10					Rev:	C01
Drawing Number		Originator		Volume																																											
Project		HE601750 - ATK		- HKF -																																											
		XX_ML		- DR - CH - 001101																																											
Location		Type	Role	Number																																											
Original Size:	A1	Scale:	1:250	Project Ref. No:	5158157																																										
				Sheet:	1 of 10																																										
				Rev:	C01																																										

DO NOT SCALE

100
0 10
Millimetres



<div>NOTES :</div> <div><div>1. ALL DIMENSIONS ARE IN METERS UNLESS OTHERWISE SPECIFIED.</div><div>2. FOR GENERAL ARRANGEMENT DETAILS REFER TO HE601750-ATK-HGN-XX_ML-DR-CH-000101 TO 000110.</div><div>3. FOR STANDARD DETAILS REFER DRAWING HE601750-ATK-HGN-XX_ML-DE-CH-000001 & 000002.</div><div>4. FOR PAVEMENT CONSTRUCTION DETAILS REFER TO TYPICAL CROSS SECTION DRAWINGS HE601750-ATK-HGN-XX_ML_XS-DR-CH-000001 TO 000003.</div></div>		<div>SAFETY, HEALTH AND ENVIRONMENTAL INFORMATION</div> <div>In addition to the hazards/risks normally associated with the types of work detailed on this drawing, note the following significant residual risks (Reference shall also be made to the design hazard log).</div> <div>Construction</div> <div>STATS01 - Working close to UK Power networks (UKPN).</div> <div>STATS04 - Working close to Thames Water_Water (TW).</div> <div>STATS05 - Working close to W.</div> <div>STATS06 - Working close to Virgin Media (V-M).</div> <div>STATS07 - Working close to GL.</div> <div>STATS10 - Working close to BTO</div> <div>Working adjacent to live traffic</div> <div>Working with hot materials</div> <div>Maintenance / Cleaning</div> <div>NONE IDENTIFIED AT THIS STAGE</div> <div>Use</div> <div>Dust And Noise Pollution</div> <div>Decommissioning / Demolition</div> <div>NONE IDENTIFIED AT THIS STAGE</div>		<div><div><div><div><div></div><div></div><div></div><div></div><div></div><div></div><div></div><div></div><div></div><div></div><div></div><div></div><div></div><div></div><div></div><div></div><div></div><div></div><div></div><div></div><div></div><div></div><div></div><div></div><div></div><div></div><div></div><div></div><div></div><div></div><div></div><div></div><div></div><div></div><div></div><div></div><div></div><div></div><div></div><div></div><div></div><div></div><div></div><div></div><div></div><div></div><div></div><div></div><div></div><div></div><div></div><div></div><div></div><div></div><div></div><div></div><div></div><div></div><div></div><div></div><div></div><div></div><div></div><div></div><div></div><div></div><div></div><div></div><div></div><div></div><div></div><div></div><div></div><div></div><div></div><div></div><div></div><div></div><div></div><div></div><div></div><div></div><div></div><div></div><div></div><div></div><div></div><div></div><div></div><div></div><div></div><div></div><div></div><div></div><div></div><div></div><div></div><div></div><div></div><div></div><div></div><div></div><div></div><div></div><div></div><div></div><div></div><div></div><div></div><div></div><div></div><div></div><div></div><div></div><div></div><div></div><div></div><div></div><div></div><div></div><div></div><div></div><div></div><div></div><div></div><div></div><div></div><div></div><div></div><div></div><div></div><div></div><div></div><div></div><div></div><div></div><div></div><div></div><div></div><div></div><div></div><div></div><div></div><div></div><div></div><div></div><div></div><div></div><div></div><div></div><div></div><div></div><div></div><div></div><div></div><div></div><div></div><div></div><div></div><div></div><div></div><div></div><div></div><div></div><div></div><div></div><div></div><div></div><div></div><div></div><div></div><div></div><div></div><div></div><div></div><div></div><div></div><div></div><div></div><div></div><div></div><div></div><div></div><div></div><div></div><div></div><div></div><div></div><div></div><div></div><div></div><div></div><div></div><div></div><div></div><div></div><div></div><div></div><div></div><div></div><div></div><div></div><div></div><div></div><div></div><div></div><div></div><div></div><div></div><div></div><div></div><div></div><div></div><div></div><div></div><div></div><div></div><div></div><div></div><div></div><div></div><div></div><div></div><div></div><div></div><div></div><div></div><div></div><div></div><div></div><div></div><div></div><div></div><div></div><div></div><div></div><div></div><div></div><div></div><div></div><div></div><div></div><div></div><div></div><div></div><div></div><div></div><div></div><div></div><div></div><div></div><div></div><div></div><div></div><div></div><div></div><div></div><div></div><div></div><div></div><div></div><div></div><div></div><div></div><div></div><div></div><div></div><div></div><div></div><div></div><div></div><div></div><div></div><div></div><div></div><div></div><div></div><div></div><div></div><div></div><div></div><div></div><div></div><div></div><div></div><div></div><div></div><div></div><div></div><div></div><div></div><div></div><div></div><div></div><div></div><div></div><div></div><div></div><div></div><div></div><div></div><div></div><div></div><div></div><div></div><div></div><div></div><div></div><div></div><div></div><div></div><div></div><div></div><div></div><div></div><div></div><div></div><div></div><div></div><div></div><div></div><div></div><div></div><div></div><div></div><div></div><div></div><div></div><div></div><div></div><div></div><div></div><div></div><div></div><div></div><div></div><div></div><div></div><div></div><div></div><div></div><div></div><div></div><div></div><div></div><div></div><div></div><div></div><div></div><div></div><div></div><div></div><div></div><div></div><div></div><div></div><div></div><div></div><div></div><div></div><div></div><div></div><div></div><div></div><div></div><div></div><div></div><div></div><div></div><div></div><div></div><div></div><div></div><div></div><div></div><div></div><div></div><div></div><div></div><div></div><div></div><div></div><div></div><div></div><div></div><div></div><div></div><div></div><div></div><div></div><div></div><div></div><div></div><div></div><div></div><div></div><div></div><div></div><div></div><div></div><div></div><div></div><div></div><div></div><div></div><div></div><div></div><div></div><div></div><div></div><div></div><div></div><div></div><div></div><div></div><div></div><div></div><div></div><div></div><div></div><div></div><div></div><div></div><div></div><div></div><div></div><div></div><div></div><div></div><div></div><div></div><div></div><div></div><div></div><div></div><div></div><div></div><div></div><div></div><div></div><div></div><div></div><div></div><div></div><div></div><div></div><div></div><div></div><div></div><div></div><div></div><div></div><div></div><div></div><div></div><div></div><div></div><div></div><div></div><div></div><div></div><div></div><div></div><div></div><div></div><div></div><div></div><div></div><div></div><div></div><div></div><div></div><div></div><div></div><div></div><div></div><div></div><div></div><div></div><div></div><div></div><div></div><div></div><div></div><div></div><div></div><div></div><div></div><div></div><div></div><div></div><div></div><div></div><div></div><div></div><div></div><div></div><div></div><div></div><div></div><div></div><div></div><div></div><div></div><div></div><div></div><div></div><div></div><div></div><div></div><div></div><div></div><div></div><div></div><div></div><div></div><div></div><div></div><div></div><div></div><div></div><div></div><div></div><div></div><div></div><div></div><div></div><div></div><div></div><div></div><div></div><div></div><div></div><div></div><div></div><div></div><div></div><div></div><div></div><div></div><div></div><div></div><div></div><div></div><div></div><div></div><div></div><div></div><div></div><div></div><div></div><div></div><div></div><div></div><div></div><div></div><div></div><div></div><div></div><div></div><div></div><div></div><div></div><div></div><div></div><div></div><div></div><div></div><div></div><div></div><div></div><div></div><div></div><div></div><div></div><div></div><div></div><div></div><div></div><div></div><div></div><div></div><div></div><div></div><div></div><div></div><div></div><div></div><div></div><div></div><div></div><div></div><div></div><div></div><div></div><div></div><div></div><div></div><div></div><div></div><div></div><div></div><div></div><div></div><div></div><div></div><div></div><div></div><div></div><div></div><div></div><div></div><div></div><div></div><div></div><div></div><div></div><div></div><div></div><div></div><div></div><div></div><div></div><div></div><div></div><div></div><div></div><div></div><div></div><div></div><div></div><div></div><div></div><div></div><div></div><div></div><div></div><div></div><div></div><div></div><div></div><div></div><div></div><div></div><div></div><div></div><div></div><div></div><div></div><div></div><div></div><div></div><div></div><div></div><div></div><div></div><div></div><div></div><div></div><div></div><div></div><div></div><div></div><div></div><div></div><div></div><div></div><div></div><div></div><div></div><div></div><div></div><div></div><div></div><div></div><div></div><div></div><div></div><div></div><div></div><div></div><div></div><div></div><div></div><div></div><div></div><div></div><div></div><div></div><div></div><div></div><div></div><div></div><div></div><div></div><div></div><div></div><div></div><div></div><div></div><div></div><div></div><div></div><div></div><div></div><div></div><div></div><div></div><div></div><div></div><div></div><div></div><div></div><div></div><div></div><div></div><div></div><div></div><div></div><div></div><div></div><div></div><div></div><div></div><div></div><div></div><div></div><div></div><div></div><div></div><div></div><div></div><div></div><div></div><div></div><div></div><div></div><div></div><div></div><div></div><div></div><div></div><div></div><div></div><div></div><div></div><div></div><div></div><div></div><div></div><div></div><div></div><div></div><div></div><div></div><div></div><div></div><div></div><div></div><div></div><div></div><div></div><div></div><div></div><div></div><div></div><div></div><div></div><div></div><div></div><div></div><div></div><div></div><div></div><div></div><div></div><div></div><div></div><div></div><div></div><div></div><div></div><div></div><div></div><div></div><div></div><div></div><div></div><div></div><div></div><div></div><div></div><div></div><div></div><div></div><div></div><div></div><div></div><div></div><div></div><div></div><div></div><div></div><div></div><div></div><div></div><div></div><div></div><div></div><div></div><div></div><div></div><div></div><div></div><div></div><div></div><div></div><div></div><div></div><div></div><div></div><div></div><div></div><div></div><div></div><div></div><div></div><div></div><div></div><div></div><div></div><div></div><div></div><div></div><div></div><div></div><div></div><div></div><div></div><div></div><div></div><div></div><div></div><div></div><div></div><div></div><div></div><div></div><div></div><div></div><div></div><div></div><div></div><div></div><div></div><div></div><div></div><div></div><div></div><div></div><div></div><div></div><div></div><div></div><div></div><div></div><div></div><div></div><div></div><div></div><div></div><div></div><div></div><div></div><div></div><div></div><div></div><div></div><div></div><div></div><div></div><div></div><div></div><div></div><div></div><div></div><div></div><div></div><div></div><div></div><div></div><div></div><div></div><div></div><div></div><div></div><div></div><div></div><div></div><div></div><div></div><div></div><div></div><div></div><div></div><div></div><div></div><div></div><div></div><div></div><div></div><div></div><div></div><div></div><div></div><div></div><div></div><div></div><div></div><div></div><div></div><div></div><div></div><div></div><div></div><div></div><div></div><div></div><div></div><div></div><div></div><div></div><div></div><div></div><div></div><div></div><div></div><div></div><div></div><div></div><div></div><div></div><div></div><div></div><div></div><div></div><div></div><div></div><div></div><div></div><div></div><div></div><div></div><div></div><div></div><div></div><div></div><div></div><div></div><div></div><div></div><div></div><div></div><div></div><div></div><div></div><div></div><div></div><div></div><div></div><div></div><div></div><div></div><div></div><div></div><div></div><div></div><div></div><div></div><div></div><div></div><div></div><div></div><div></div><div></div><div></div><div></div><div></div><div></div><div></div><div></div><div></div><div></div><div></div><div></div><div></div><div></div><div></div><div></div><div></div><div></div><div></div><div></div><div></div><div></div><div></div><div></div><div></div><div></div><div></div><div></div><div></div><div></div><div></div><div></div><div></div><div></div><div></div><div></div><div></div><div></div><div></div><div></div><div></div><div></div><div></div><div></div><div></div><div></div><div></div><div></div><div></div><div></div><div></div><div></div><div></div><div></div><div></div><div></div><div></div><div></div><div></div><div></div><div></div><div></div><div></div><div></div><div></div><div></div><div></div><div></div><div></div><div></div><div></div><div></div><div></div><div></div><div></div><div></div><div></div><div></div><div></div><div></div><div></div><div></div><div></div><div></div><div></div><div></div><div></div><div></div><div></div><div></div><div></div><div></div><div></div><div></div><div></div><div></div><div></div><div></div><div></div><div></div><div></div><div></div><div></div><div></div><div></div><div></div><div></div><div></div><div></div><div></div><div></div><div></div><div></div><div></div><div></div><div></div><div></div><div></div><div></div><div></div><div></div><div></div><div></div><div></div><div></div></div></div></div></div>	
--	--	--	--	--	--

DO NOT SCALE

Millimetres

0

10

100

FOR CONTINUATION REFER TO SHEET 4

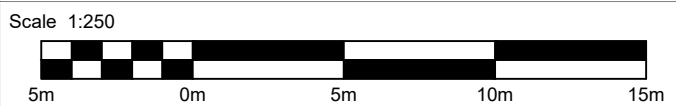
FOR CONTINUATION REFER TO SHEET 6

uneven cracked concrete surface. The surfacing requirements to be in compliance with section 15.2.15

In table 6-1, the buffer/absolute minimum separation to be 1.5m for 50mph speed limit road, 3m for 70mph

Min horizontal radii- 4m for 10kph cycle design speed, table 5-1, not compliance with ltn1/20

This map is based on Ordnance Survey material with the permission of Ordnance Survey on behalf of the Controller of Her Majesty's Stationery Office. © Crown copyright. Unauthorised reproduction infringes Crown copyright and may lead to prosecution or civil proceedings. Highways England 100018928, 2020.



- NOTES :
- ALL DIMENSIONS ARE IN METERS UNLESS OTHERWISE SPECIFIED.
 - FOR GENERAL ARRANGEMENT DETAILS REFER TO HE601750-ATK-HGN-XX_ML-DR-CH-000101 TO 000110.
 - FOR STANDARD DETAILS REFER DRAWING HE601750-ATK-HGN-XX_ML-DE-CH-000001 & 000002.
 - FOR PAVEMENT CONSTRUCTION DETAILS REFER TO TYPICAL CROSS SECTION DRAWINGS HE601750-ATK-HGN-XX_ML_XS-DR-CH-000001 TO 000003.

SAFETY, HEALTH AND ENVIRONMENTAL INFORMATION

In addition to the hazards/risks normally associated with the types of work detailed on this drawing, note the following significant residual risks (Reference shall also be made to the design hazard log).

Construction

STATS01 - Working close to UK Power networks (UKPN).
STATS04 - Working close to Thames Water_Water (TW).
STATS05 - Working close to W.
STATS06 - Working close to Virgin Media (V-M).
STATS07 - Working close to GL.
STATS10 - Working close to BTO

Working adjacent to live traffic

Working with hot materials

Maintenance / Cleaning

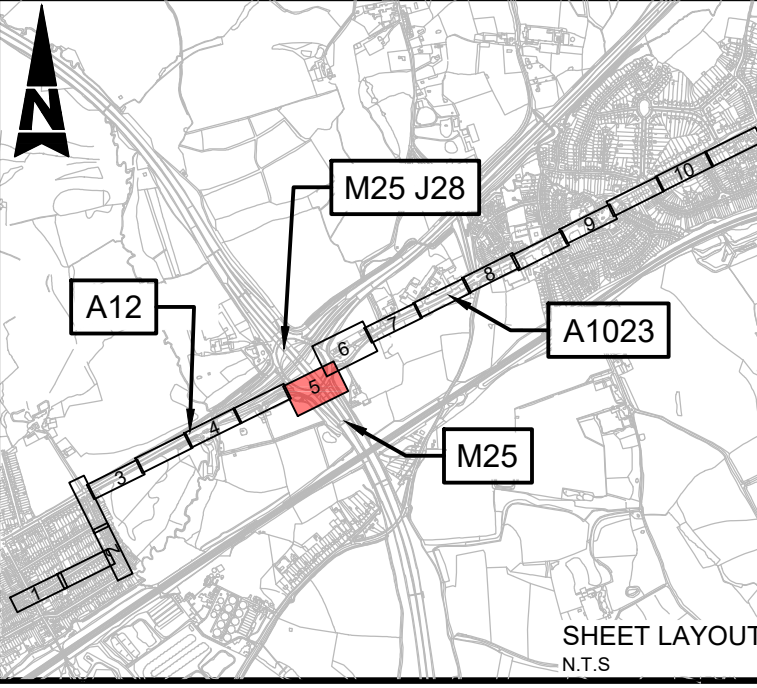
NONE IDENTIFIED AT THIS STAGE

Use

Dust And Noise Pollution

Decommissioning / Demolition

NONE IDENTIFIED AT THIS STAGE



KEY:

- | | | | |
|--|---|--|---|
| | LAND OWNERSHIP BOUNDARY | | PROPOSED DOUBLE KERB (HEIGHT - 250mm) |
| | PROPOSED ROAD MARKING | | PROPOSED HB2 KERB (HEIGHT - 125mm) |
| | EXISTING ROAD MARKING | | PROPOSED HB3 KERB (HEIGHT - 100mm) |
| | NEW PCC TACTILE BLISTER PAVING (RED) 400x400x65mm | | PROPOSED TRANSITION KERB |
| | NEW PCC TACTILE BLISTER PAVING (BUFF) 400x400x65mm | | PROPOSED DROPPED KERB (HEIGHT - 20mm) |
| | WIDENING - W | | PROPOSED KB1 TRANSITION KERB |
| | REGRADED AREA - R | | PROPOSED KB2 KERB (HEIGHT - 140mm) |
| | INLAY TREATMENT OF EXISTING FOOTPATH - T | | PROPOSED KB3 TRANSITION KERB |
| | NEW CONSTRUCTION - N1 | | EXISTING KERB TO BE RETAINED |
| | NEW CONSTRUCTION WITH MAINTENANCE VEHICLE ACCESS - N2 | | PROPOSED EDGE KERB |
| | NEW CONSTRUCTION - N3 | | PROPOSED WOODEN PEG |
| | NEW CONSTRUCTION - TERRAM MEMBRANE - N4 | | PROPOSED FLUSH KERB |
| | EXISTING FOOTPATH TO BE RETAINED | | |
| | SITE SPECIFIC H & S HAZARDS - REFER TO SAFETY, HEALTH AND ENVIRONMENTAL INFORMATION BOX | | |

SNC-LAVALIN
ATKINS

Member of the SNC-Lavalin Group
Copyright © SNC Lavalin (2019)

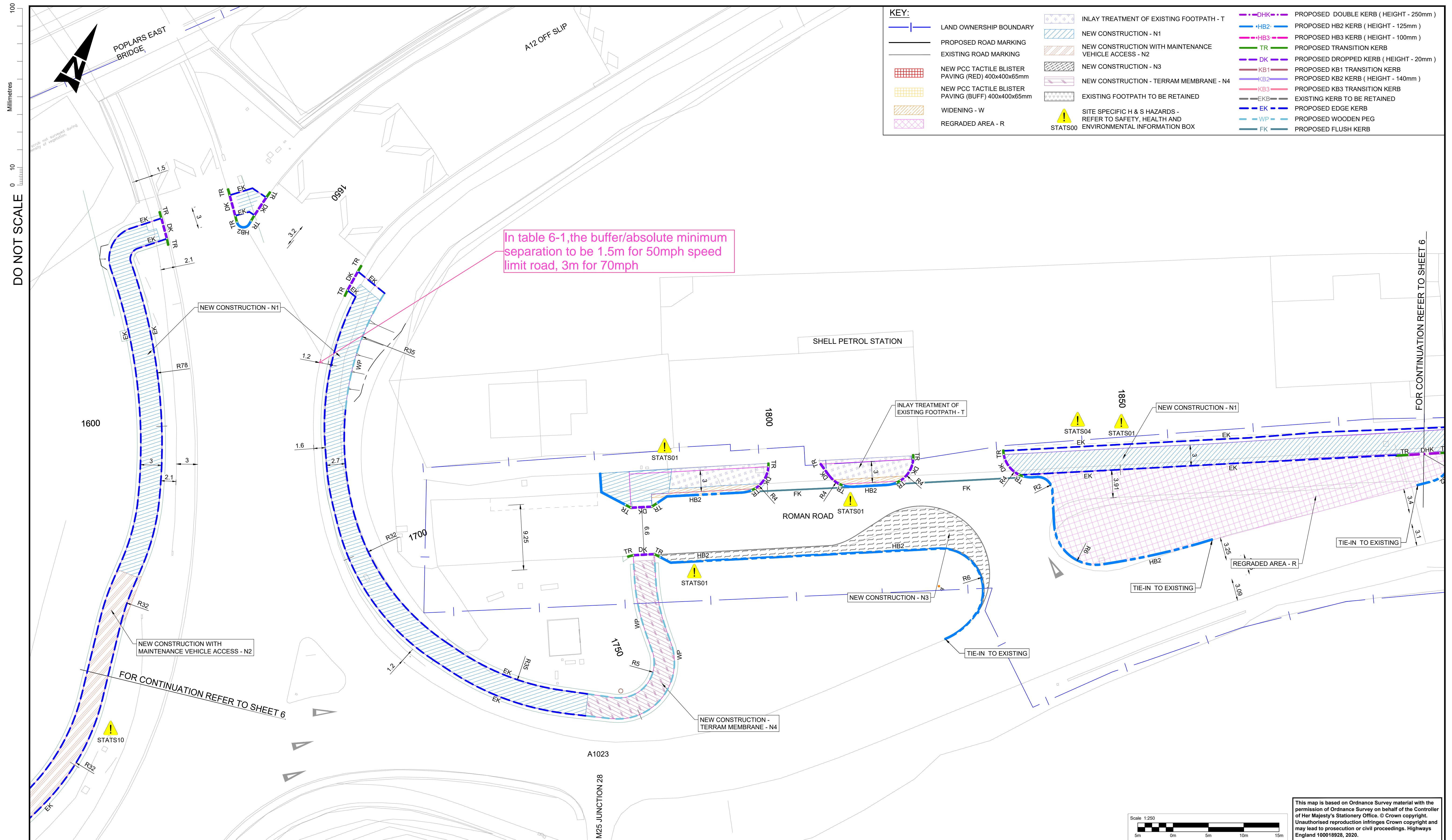
Working on behalf of
highways
england

Amlin House
Atkins 4th Floor
90-96 Victoria Road
Chelmsford
Essex CM1 1QU
Tel: +44 (0)1245 245245
Fax: +44 (0)1245 345010
www.atkinsglobal.com

Drawing Suitability S3 Status S3 Project Title M25 J28 Designated Funds Detailed Design

Drawing Title M25 J28 SHARED PATH KERBS & PAVEMENT LAYOUT

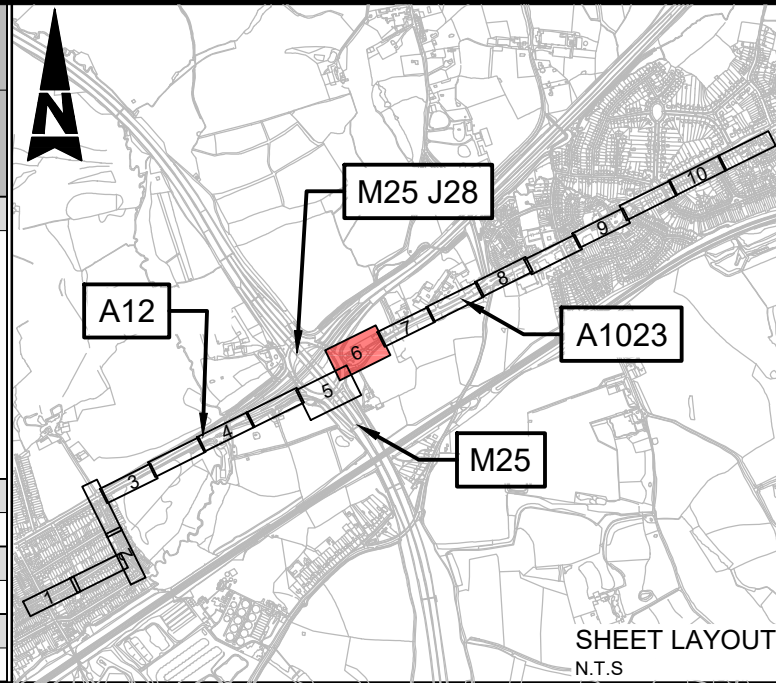
Drawing Number HE601750 - ATK - HKF - XX_ML - DR - CH - 001105
Project Originator Volume
Location Type Role Number
Original Size: A1 Scale: 1:250 Project Ref. No: 5158157 Sheet: 5 of 10 Rev: C02





NOTES :

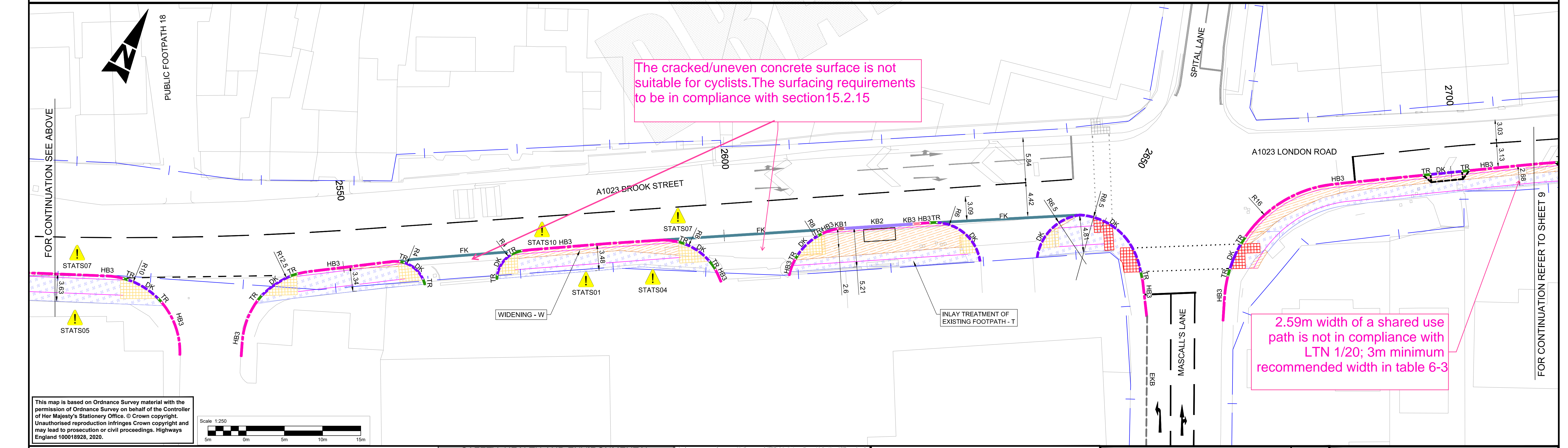
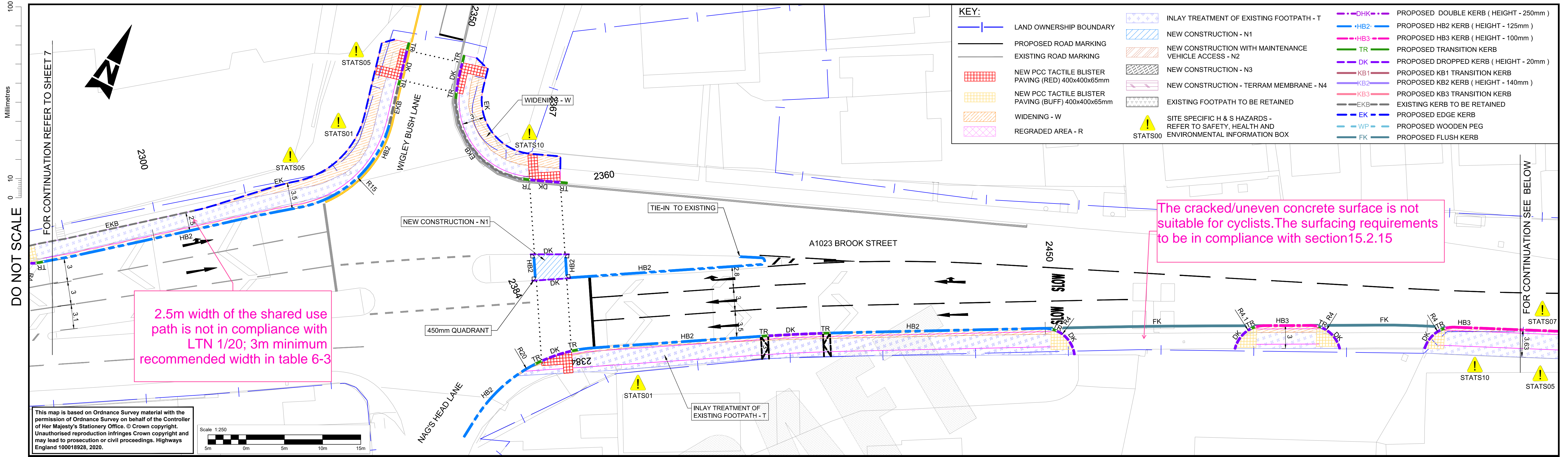
1. ALL DIMENSIONS ARE IN METERS UNLESS OTHERWISE SPECIFIED.
2. FOR GENERAL ARRANGEMENT DETAILS REFER TO HE601750-ATK-HGN-XX_ML-DR-CH-000101 TO 000110.
3. FOR STANDARD DETAILS REFER DRAWING HE601750-ATK-HGN-XX_ML-DE-CH-000001 & 000002.
4. FOR PAVEMENT CONSTRUCTION DETAILS REFER TO TYPICAL CROSS SECTION DRAWINGS HE601750-ATK-HGN-XX_ML_XS-DR-CH-000001 TO 000003.

SAFETY, HEALTH AND ENVIRONMENTAL INFORMATION	
In addition to the hazards/risks normally associated with the types of work detailed on this drawing, note the following significant residual risks (Reference shall also be made to the design hazard log).	
Construction	
STATS01 - Working close to UK Power networks (UKPN).	
STATS04 - Working close to Thames Water_Water (TW).	
STATS05 - Working close to W.	
STATS06 - Working close to Virgin Media (V-M).	
STATS07 - Working close to GL.	
STATS10 - Working close to BTO	
Working adjacent to live traffic	
Working with hot materials	
Maintenance / Cleaning	
NONE IDENTIFIED AT THIS STAGE	
Use	
Dust And Noise Pollution	
Decommissioning / Demolition	
NONE IDENTIFIED AT THIS STAGE	



Description							
Status	Revision	Drawn	Checked	Reviewed	Authorised	Issue Date	
Description							
Status	Revision	Drawn	Checked	Reviewed	Authorised	Issue Date	
Description							
Status	Revision	Drawn	Checked	Reviewed	Authorised	Issue Date	
Description							
FOR INFORMATION							
Status	Revision	Drawn	Checked	Reviewed	Authorised	Issue Date	
S3	C01	SN	PDM	GB	KP	13/05/20	
Description							
FOR CONSTRUCTION							
Status	Revision	Drawn	Checked	Reviewed	Authorised	Issue Date	
S3	C02	SN	PDM	GB	KP	10/08/20	

Drawing Suitability		Project Title M25 J28 Designated Funds Detailed Design	
		Status S3	
 <p>SNC-LAVALIN ATKINS</p> <p>Member of the SNC-Lavalin Group Copyright © SNC Lavalin (2019)</p>		<p>Amlin House Atkins 4th Floor 90-96 Victoria Road Chelmsford Essex CM1 1QU Tel: +44 (0)1245 245245 Fax: +44 (0)1245 345010 www.atkinsglobal.com</p>	
<p>Client</p> <p>Working on behalf of</p> 		<p>Drawing Number Project HE601750 - ATK - HKF - XX_ML - DR - CH - 001106</p> <p>Location</p>	
		<p>Type</p> <p>Role</p> <p>Number</p>	
Original Size: A1		<p>Scale: 1:250</p> <p>Project Ref. No: 5158157</p> <p>Sheet: 6 of 10</p> <p>Rev: C02</p>	



NOTES:

- ALL DIMENSIONS ARE IN METERS UNLESS OTHERWISE SPECIFIED.
- FOR GENERAL ARRANGEMENT DETAILS REFER TO HE601750-ATK-HGN-XX_ML-DR-CH-000101 TO 000110.
- FOR STANDARD DETAILS REFER DRAWING HE601750-ATK-HGN-XX_ML-DE-CH-000001 & 000002.
- FOR PAVEMENT CONSTRUCTION DETAILS REFER TO TYPICAL CROSS SECTION DRAWINGS HE601750-ATK-HGN-XX_ML-XS-DR-CH-000001 TO 000003.

SAFETY, HEALTH AND ENVIRONMENTAL INFORMATION

In addition to the hazards/risks normally associated with the types of work detailed on this drawing, note the following significant residual risks (Reference shall also be made to the design hazard log).

Construction
STATS01 - Working close to UK Power networks (UKPN).
STATS04 - Working close to Thames Water_Water (TW).
STATS05 - Working close to W.
STATS06 - Working close to Virgin Media (V-M).
STATS07 - Working close to GL.
STATS10 - Working close to BTO.
Working adjacent to live traffic
Working with hot materials
Maintenance / Cleaning
NONE IDENTIFIED AT THIS STAGE
Use
Dust And Noise Pollution
Decommissioning / Demolition
NONE IDENTIFIED AT THIS STAGE

SHEET LAYOUT

N.T.S.

Description	Status	Revision	Drawn	Checked	Reviewed	Authorised	Issue Date
FOR INFORMATION	S3	P01	SS	PDM	GB	---	11/05/20
FIRST ISSUE	S3	C01	SS	PDM	GB	KP	13/05/20
FOR CONSTRUCTION APPROVAL	S3	P03	SC	PDM	GB	---	23/06/20
FOR CONSTRUCTION APPROVAL	S3	C02	SC	PDM	SC	KP	26/06/20

Drawing Suitability

Status **S3**

Project Title **M25 J28 Designated Funds Detailed Design**

Drawing Title **M25 J28 SHARED PATH KERBS & PAVEMENT LAYOUT**

Drawing Number **HE601750 - ATK - HKF - XX_ML - DR - CH - 001108**

Location **A1**

Scale: **1:250**

Project Ref. No: **5158157**

Sheet: **8 of 10**

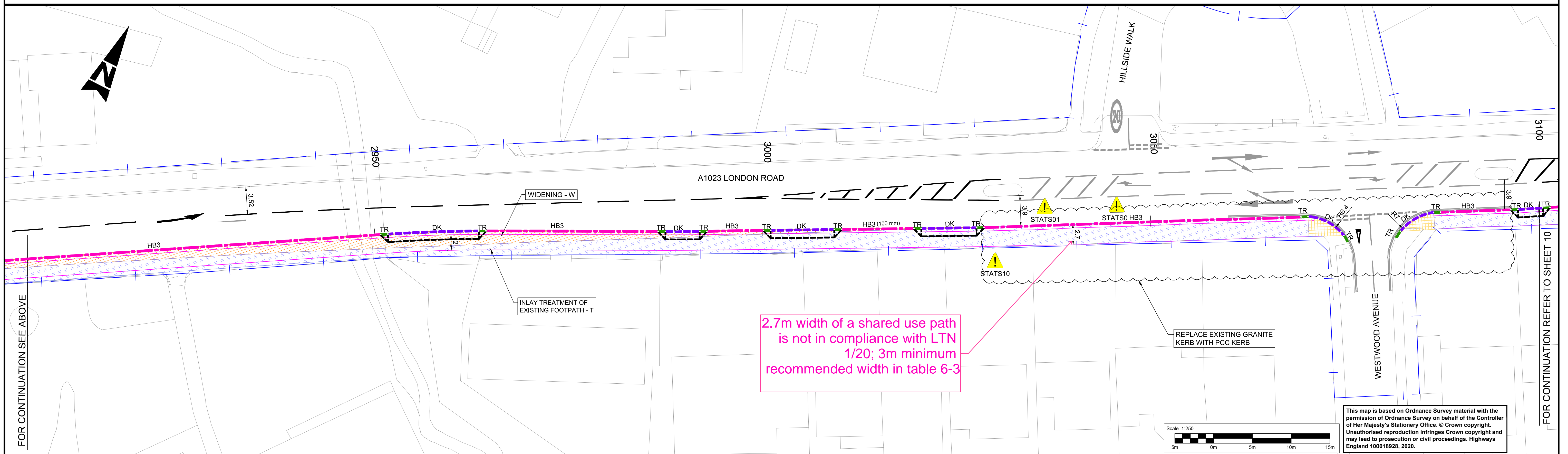
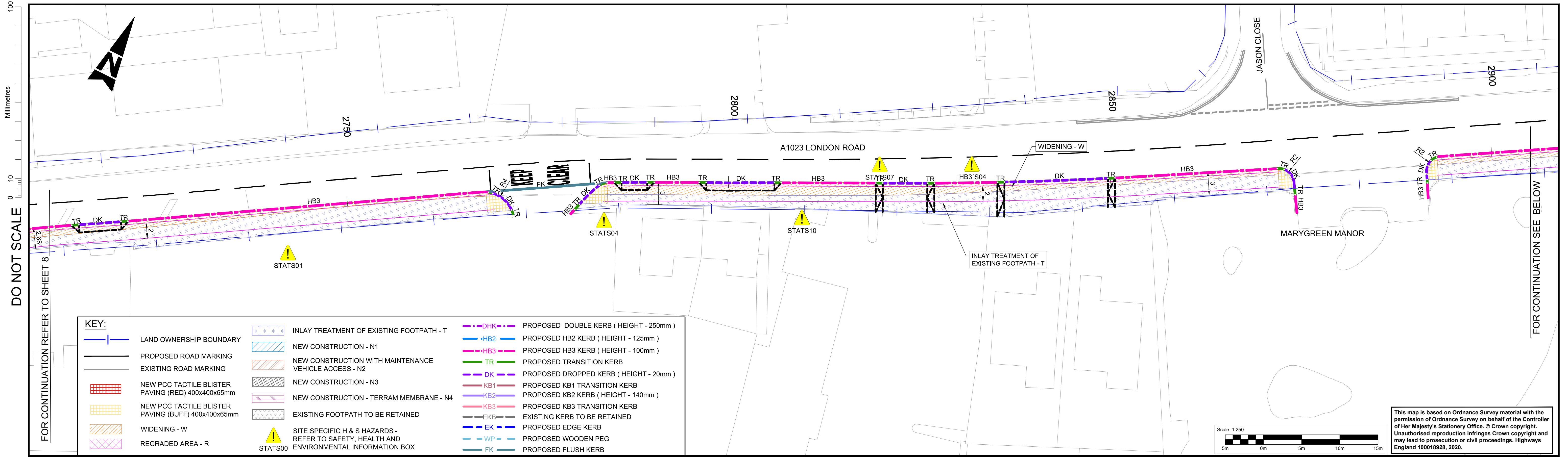
Rev: **C02**

Client **Working on behalf of highways england**

Copyright © Atkins Limited (2017)

Member of the SNC-Lavalin Group

Epsom Gateway
Ashley Avenue
Epsom
Surrey
KT18 5AL
Tel: +44 (0)1372 726140
Fax: +44 (0)1372 740055
www.atkinsglobal.com



ANNEX 2

Plan showing the Junction Section

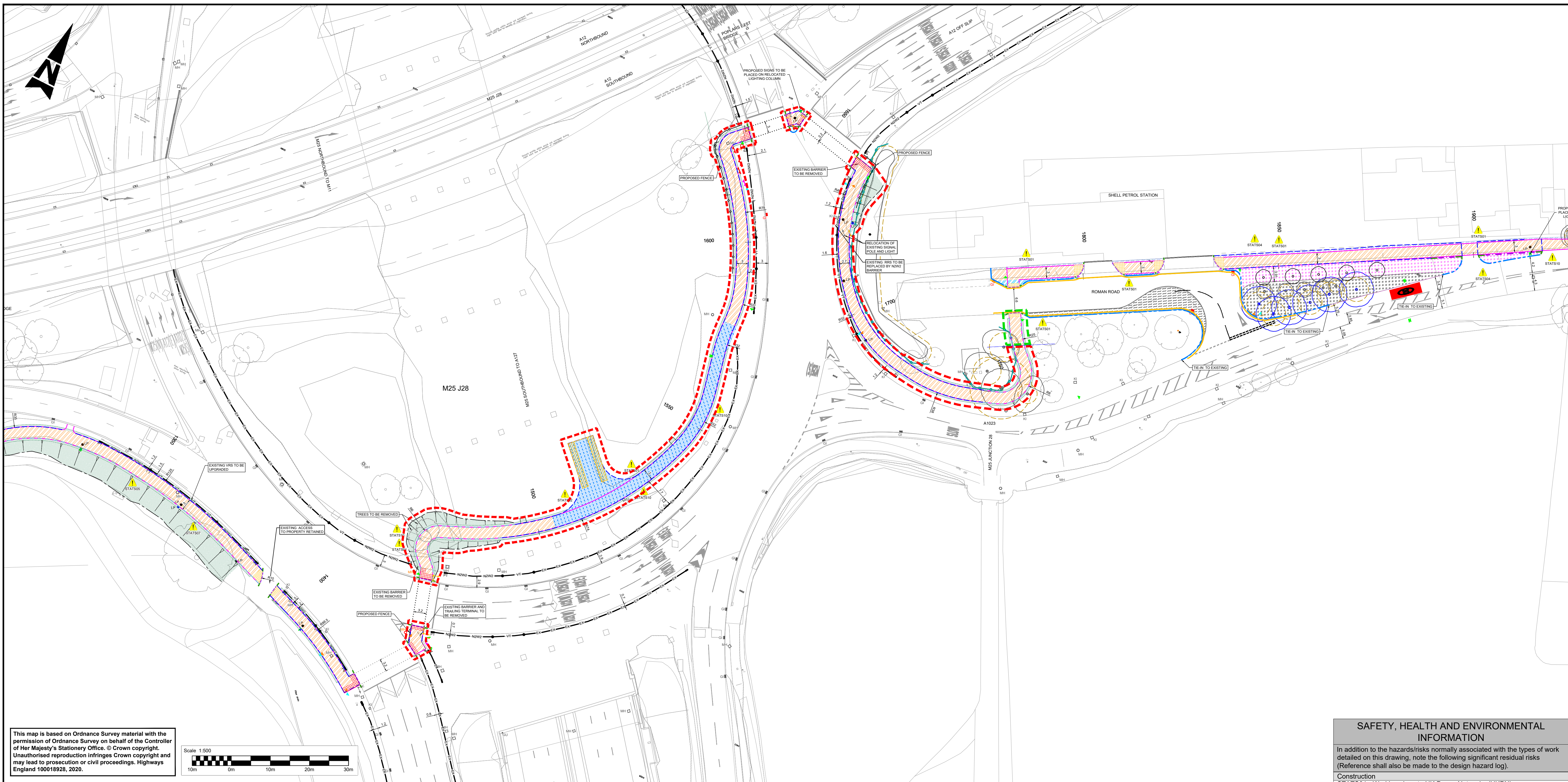
DO NOT SCALE

Millimetres

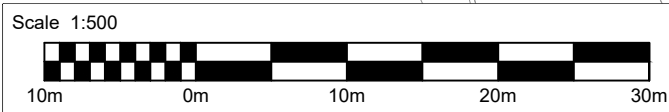
0

10

100



This map is based on Ordnance Survey material with the permission of Ordnance Survey on behalf of the Controller of Her Majesty's Stationery Office. © Crown copyright. Unauthorised reproduction infringes Crown copyright and may lead to prosecution or civil proceedings. Highways England 100018928, 2020.



KEY:

- | | | | |
|--|--|--|---|
| | LAND OWNERSHIP BOUNDARY | | PROPOSED LANDSCAPE |
| | EXISTING TREE | | PROPOSED REGRADED CARRIAGEWAY |
| | PROPOSED / RELOCATED TREE | | PROPOSED SHARED PATH WITH MAINTENANCE VEHICLE ACCESS |
| | SECTION MARKER | | PROPOSED FOOTPATH |
| | PROPOSED SHARED PATH | | EXISTING LANDSCAPE |
| | PROPOSED BUFFER | | PROPOSED EARTHWORKS WITH GRASS LANDSCAPING |
| | PROPOSED PROPERTY CLEARANCE | | SITE SPECIFIC H & S HAZARDS - REFER TO SAFETY, HEALTH AND ENVIRONMENTAL INFORMATION BOX |
| | PROPOSED GRASS VERGE | | EXISTING TELEGRAPH PHONE |
| | PROPOSED OUTFALL | | RELOCATED POSITION OF EXISTING TELEGRAPH PHONE |
| | PROPOSED MANHOLE | | |
| | PROPOSED CATCH PIT | | |
| | PROPOSED GRATE INLET | | |
| | PROPOSED KERB INLET | | |
| | FLOW DIRECTION | | |
| | EXISTING MANHOLE TO KERB INLET TO BE RETAINED | | |
| | EXISTING GRATE INLET TO BE RETAINED | | |
| | EXISTING KERB INLET TO BE RETAINED | | |
| | EXISTING MANHOLE TO GRATE INLET TO BE RETAINED | | |
| | EXISTING GULLY TO BE RETAINED | | |
| | EXISTING MANHOLE TO BE RETAINED | | |
| | EXISTING OUTFALL TO BE RETAINED | | |
| | EXISTING MANHOLE TO BE DEMOLISHED | | |
| | EXISTING GRATE INLET TO BE DEMOLISHED | | |
| | EXISTING KERB INLET TO BE DEMOLISHED | | |
| | EXISTING MANHOLE TO BE ABANDONED | | |
| | EXISTING GULLY TO BE ABANDONED | | |
| | EXISTING MANHOLE TO BE ABANDONED | | |

- | | | | | | |
|--|--|--|--|--|---------------------------------------|
| | PROPOSED OUTFALL | | EXISTING KERB INLET TO BE RETAINED | | EXISTING GRATE INLET TO BE DEMOLISHED |
| | PROPOSED MANHOLE | | EXISTING MANHOLE TO GRATE INLET TO BE RETAINED | | EXISTING KERB INLET TO BE DEMOLISHED |
| | PROPOSED CATCH PIT | | EXISTING GULLY TO BE RETAINED | | EXISTING MANHOLE TO BE DEMOLISHED |
| | PROPOSED GRATE INLET | | EXISTING MANHOLE TO BE RETAINED | | EXISTING GULLY TO BE ABANDONED |
| | PROPOSED KERB INLET | | EXISTING OUTFALL TO BE RETAINED | | EXISTING MANHOLE TO BE ABANDONED |
| | FLOW DIRECTION | | EXISTING MANHOLE TO BE DEMOLISHED | | |
| | EXISTING MANHOLE TO KERB INLET TO BE RETAINED | | EXISTING GULLY TO BE ABANDONED | | |
| | EXISTING GRATE INLET TO BE RETAINED | | EXISTING MANHOLE TO BE ABANDONED | | |
| | EXISTING KERB INLET TO BE RETAINED | | | | |
| | EXISTING MANHOLE TO GRATE INLET TO BE RETAINED | | | | |
| | EXISTING GULLY TO BE RETAINED | | | | |
| | EXISTING MANHOLE TO BE RETAINED | | | | |
| | EXISTING OUTFALL TO BE RETAINED | | | | |
| | EXISTING MANHOLE TO BE DEMOLISHED | | | | |
| | EXISTING GRATE INLET TO BE DEMOLISHED | | | | |
| | EXISTING KERB INLET TO BE DEMOLISHED | | | | |
| | EXISTING MANHOLE TO BE ABANDONED | | | | |
| | EXISTING GULLY TO BE ABANDONED | | | | |
| | EXISTING MANHOLE TO BE ABANDONED | | | | |

EXTENT OF NMU ROUTE PROVIDED IN M25 J28 IMPROVEMENT SCHEME

- | | |
|--|---------------------------------|
| | IN HIGHWAYS ENGLAND HIGHWAY |
| | IN ESSEX COUNTY COUNCIL HIGHWAY |

- | | | | |
|--|-------|--|---|
| | CC/CX | | EXISTING CONTROL BOX / CCTV TO BE RELOCATED |
| | CC/CX | | RELOCATED POSITION OF EXISTING CONTROL BOX / CCTV |
| | BL | | EXISTING BOLLARD TO BE REMOVED |
| | BL | | RELOCATED KEEP - LEFT BOLLARD |
| | LP | | EXISTING LIGHTING COLUMN TO BE RELOCATED |
| | LP | | RELOCATED POSITION OF EXISTING LIGHTING COLUMN |
| | LP | | RETAINED EXISTING LIGHTING COLUMN |
| | LP | | EXISTING TRAFFIC SIGN AND POST |
| | LP | | PROPOSED TRAFFIC SIGN AND POST |
| | LP | | RETAINED EXISTING TRAFFIC SIGN AND POST |
| | LP | | RELOCATED EXISTING TRAFFIC SIGN AND POST |
| | LP | | EXISTING SIGN AND POST TO BE REMOVED |

- | | |
|--|--|
| | NEW PCC TACTILE BLISTER PAVING (RED) 400x400x65mm |
| | NEW PCC TACTILE BLISTER PAVING (BUFF) 400x400x65mm |
| | EXISTING TRAFFIC SIGNAL |
| | PROPOSED TRAFFIC SIGNAL |
| | PROPOSED DOUBLE KERB (HEIGHT - 250mm) |
| | PROPOSED HB2 KERB (HEIGHT - 125mm) |
| | PROPOSED HB3 KERB (HEIGHT - 100mm) |
| | PROPOSED TRANSITION KERB |
| | PROPOSED DROPPED KERB (HEIGHT - 20mm) |
| | PROPOSED KB1 TRANSITION KERB |
| | PROPOSED KB2 KERB (HEIGHT - 140mm) |

- | | |
|--|-----------------------------------|
| | PROPOSED KB3 TRANSITION KERB |
| | EXISTING KERB TO BE RETAINED |
| | PROPOSED EDGE KERB |
| | PROPOSED WOODEN PEG |
| | PROPOSED FLUSH KERB |
| | PROPOSED PEDESTRIAN GUARD RAILING |
| | EXISTING VRS |
| | PROPOSED VRS P1 TERMINAL |
| | PROPOSED VRS P4 TERMINAL |
| | PROPOSED VRS TRANSITION |
| | CHANGE IN BARRIER TYPE |
| | SLOPE TO ENTRANCE |

SAFETY, HEALTH AND ENVIRONMENTAL INFORMATION

In addition to the hazards/risks normally associated with the types of work detailed on this drawing, note the following significant residual risks (Reference shall also be made to the design hazard log).

- | |
|---|
| Construction |
| STATS01 - Working close to UK Power Networks (UKPN) |
| STATS02 - Working close to Z |
| STATS05 - Working close to W |
| STATS07 - Working close to GL |
| STATS10 - Working close to BTL |
| Working adjacent to live traffic |
| Working with hot materials |
| Maintenance / Cleaning |
| NONE IDENTIFIED AT THIS STAGE |

Use
NONE IDENTIFIED AT THIS STAGE

Decommissioning / Demolition
NONE IDENTIFIED AT THIS STAGE

Description						
Status	Revision	Drawn	Checked	Reviewed	Authorised	Issue Date
Description						
Status	Revision	Drawn	Checked	Reviewed	Authorised	Issue Date
Description						
First Issue						
Status	Revision	Drawn	Checked	Reviewed	Authorised	Issue Date
A1	C01	ML	SRH	SRH	PG	24/06/21
Scale amended to 1:500						
Status	Revision	Drawn	Checked	Reviewed	Authorised	Issue Date
S2	P02	AL	SRH	SRH	---	28/06/21
Description						
Boundaries clarified						
Status	Revision	Drawn	Checked	Reviewed	Authorised	Issue Date
A1	C02	AL	SRH	SRH	PG	29/06/21

Drawing Suitability		Status	Project Title
APPROVED - PUBLISHED		A1	M25 junction 28 improvement scheme
 ATKINS Member of the SNC-Lavalin Group Copyright © SNC Lavalin (2021)		Drawing Title	
Amlin House Atkins 4th Floor 90-96 Victoria Road Chelmsford Essex CM1 1QU Tel: +44 (0)1245 245245 Fax: +44 (0)1245 345010 www.atkinsglobal.com		DESIGNATED FUNDS - NMU ROUTE BROOK STREET ROUNDABOUT	
Client		Drawing Number	Project
Working on behalf of		HE551519	J28
		Originator	Volume
		ATK	HGN
		DR	CX
		Type	Role
		Number	Number
		Original Size	Scale
		A1	1:500
		Project Ref. No.	5158157
		Sheet	1 of 1
		Rev.	C02

© Crown copyright (2021).

You may re-use this information (not including logos) free of charge in any format or medium, under the terms of the Open Government Licence. To view this licence:

visit www.nationalarchives.gov.uk/doc/open-government-licence/

write to the Information Policy Team, **The National Archives**, Kew, London TW9 4DU,
or email psi@nationalarchives.gsi.gov.uk.

Printed on paper from well-managed forests and other controlled sources.

Registered office Bridge House, 1 Walnut Tree Close, Guildford GU1 4LZ

Highways England Company Limited registered in England and Wales number 09346363

