

M25 junction 28 improvement scheme TR010029

6.2 Environmental Statement Chapter 7: Biodiversity figures

APFP Regulation 5(2)(a)
Planning Act 2008

Infrastructure Planning (Applications: Prescribed Forms and Procedure) Regulations 2009



Infrastructure Planning

Planning Act 2008

The Infrastructure Planning (Applications: Prescribed Forms and Procedure) Regulations 2009

M25 junction 28 scheme Development Consent Order 202[x]

6.2 ENVIRONMENTAL STATEMENT CHAPTER 7: BIODIVERSITY FIGURES

Regulation Number:	Regulation 5(2)(a)
Planning Inspectorate Scheme Reference:	TR010029
Application Document Reference:	TR010029/APP/6.2
Author:	M25 junction 28 improvement scheme project team, Highways England

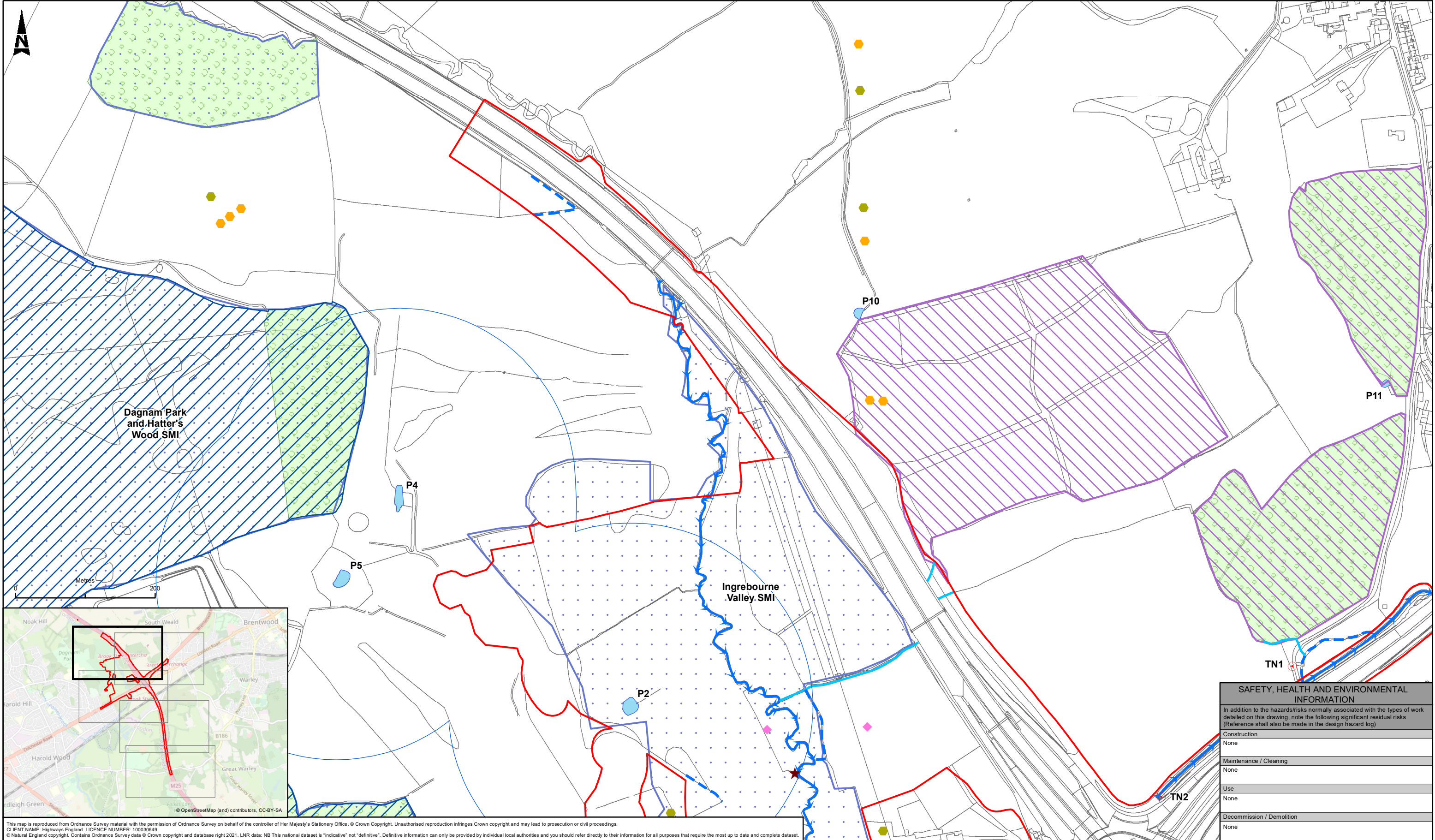
Version	Date	Status of Version
2	June 2021	Deadline 9, final version
1	May 2020	Application issue

Table of contents

Chapter	Pages
2. Schedule of figures included in this application document	4

2. Schedule of figures included in this application document

Document title	Document number	Revision
Figure 7.1 Ecological Constraints Sheet 1 of 5	TR010029/APP/6.2	1
Figure 7.1 Ecological Constraints Sheet 2 of 5	TR010029/APP/6.2	1
Figure 7.1 Ecological Constraints Sheet 3 of 5	TR010029/APP/6.2	1
Figure 7.1 Ecological Constraints Sheet 4 of 5	TR010029/APP/6.2	1
Figure 7.1 Ecological Constraints Sheet 5 of 5	TR010029/APP/6.2	1
Figure 7.2 Phase 1 Habitat Survey Sheet 1 of 5	TR010029/APP/6.2	1
Figure 7.2 Phase 1 Habitat Survey Sheet 2 of 5	TR010029/APP/6.2	1
Figure 7.2 Phase 1 Habitat Survey Sheet 3 of 5	TR010029/APP/6.2	1
Figure 7.2 Phase 1 Habitat Survey Sheet 4 of 5	TR010029/APP/6.2	1
Figure 7.2 Phase 1 Habitat Survey Sheet 5 of 5	TR010029/APP/6.2	1
Figure 7.3 Biodiversity Designated Sites Sheet 1 of 2	TR010029/APP/6.2	1
Figure 7.3 Biodiversity Designated Sites Sheet 2 of 2	TR010029/APP/6.2	1
Figure 7.4 Priority Habitats	TR010029/APP/6.2	1



This map is reproduced from Ordnance Survey material with the permission of Ordnance Survey on behalf of the controller of Her Majesty's Stationery Office. © Crown Copyright. Unauthorised reproduction infringes Crown copyright and may lead to prosecution or civil proceedings.
CLIENT NAME: Highways England LICENCE NUMBER: 100030649
© Natural England copyright. Contains Ordnance Survey data © Crown copyright and database right 2021. LNR data: NB This national dataset is "indicative" not "definitive". Definitive information can only be provided by individual local authorities and you should refer directly to their information for all purposes that require the most up to date and complete dataset.

LEGEND

DCO Boundary

Ponds

Running water

Wet ditch

Dry ditch

Target Notes

Desk Study - Designated Sites And Ancient Woodland

Sites of Importance for Nature Conservation (SINCs, name for locally designated site in Greater London)

Local Wildlife Sites (LoWS, name of locally designated sites in Essex)

Ancient Woodland

Local Nature Reserves (LNR)

Desk Study - Protected Species Records

Notable Bat Species

Grass Snake

Great Crested Newt

Hedgehog

Slow-worm

London BAP Bird Record

Schedule 1 Bird Record

Field Survey

Building With Bat Roost Potential

250m Great Crested Newt Sensitive Area

Kingfisher identified along Weald Brook

Common Lizard

Otter Spraint

Bat Roost - Tree

TN1 Penny Royal

TN2 Himalayan Balsam

Field Survey - Invasive Species

Himalayan Balsam

Signal Crayfish Recorded

Note: For locations of non-native goldenrod, see Phase 1 habitat drawing (Figure 7.2).

Description

Status

Revision

Drawn

Checked

Reviewed

Authorised

Issue Date

Description

Status

Revision

Drawn

Checked

Reviewed

Authorised

Issue Date

Description

Status

Revision

Drawn

Checked

Reviewed

Authorised

Issue Date

Description

Status

Revision

Drawn

Checked

Reviewed

Authorised

Issue Date

Description

Status

Revision

Drawn

Checked

Reviewed

Authorised

Issue Date

Description

Status

Revision

Drawn

Checked

Reviewed

Authorised

Issue Date

PUBLISHED

ATKINS

Member of the SNC-Lavalin Group

Epsom Gateway
Ashley Avenue
Epsom
Surrey
KT18 5AL
Tel: +44 (0) 1372 726140
Fax: +44 (0) 1372 740055
www.atkinsglobal.com

Copyright © Atkins Limited (2021)

Status

A1

Project Title

M25 Junction 28

Drawing Title

FIGURE 7.1
ECOLOGICAL CONSTRAINTS
SHEET 1 OF 5

Drawing Number

HE551519 - ATK - EBD
XX - GS - GI - 000003

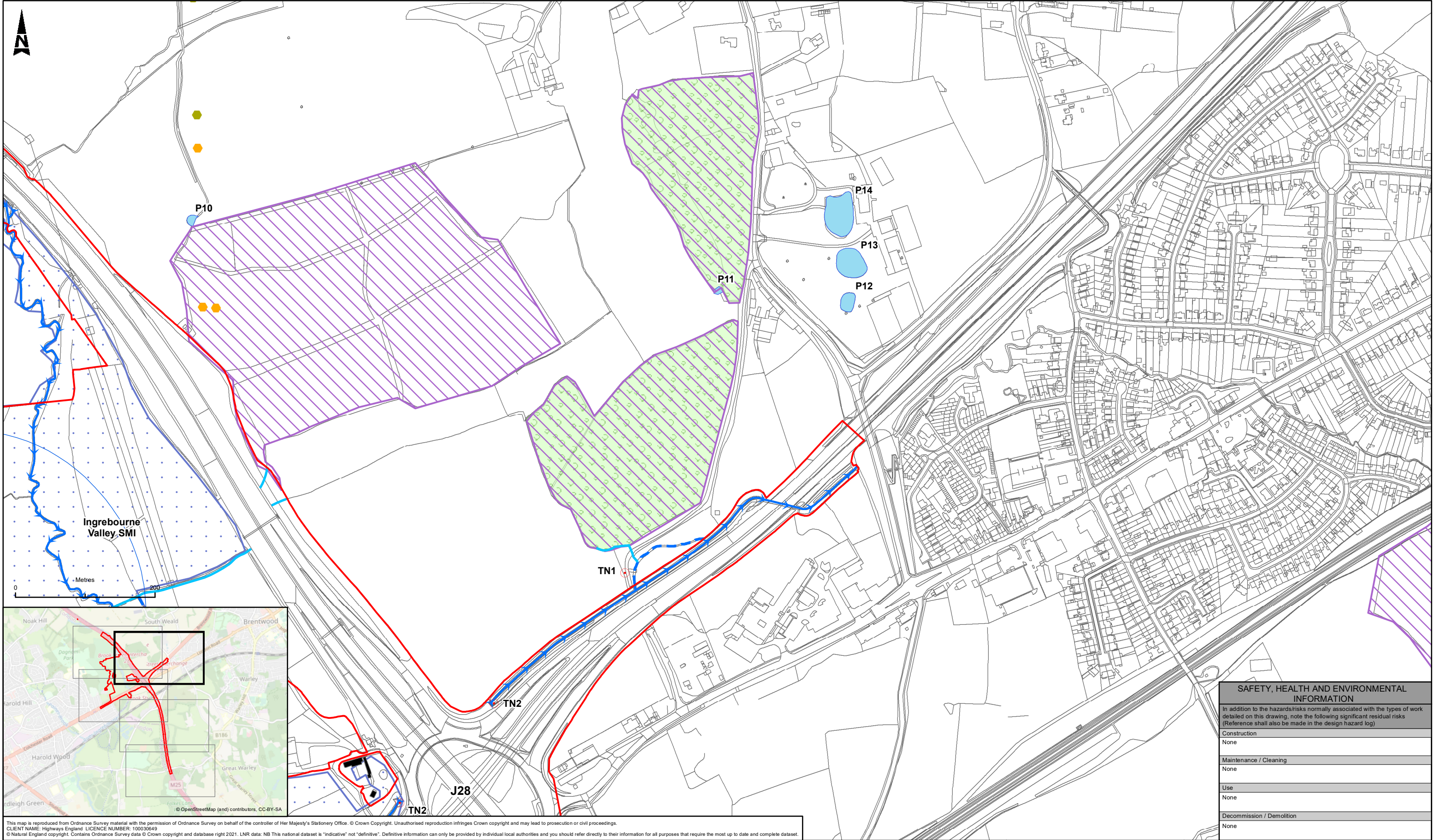
Original Size: A3

Scale: 1:5,000

Project Ref. No: ---

Sheet: 1 of 5

Rev: C02



This map is reproduced from Ordnance Survey material with the permission of Ordnance Survey on behalf of the controller of Her Majesty's Stationery Office. © Crown Copyright. Unauthorised reproduction infringes Crown copyright and may lead to prosecution or civil proceedings.
CLIENT NAME: Highways England LICENCE NUMBER: 100030649
© Natural England copyright. Contains Ordnance Survey data © Crown copyright and database right 2021. LNR data: NB This national dataset is "indicative" not "definitive". Definitive information can only be provided by individual local authorities and you should refer directly to their information for all purposes that require the most up to date and complete dataset.

LEGEND

- DCO Boundary
- Ponds
- Running water
- Wet ditch
- Dry ditch
- Target Notes

Desk Study - Designated Sites And Ancient Woodland

- Sites of Importance for Nature Conservation (SINCs, name for locally designated site in Greater London)
- Local Wildlife Sites (LoWS, name of locally designated sites in Essex)
- Ancient Woodland
- Local Nature Reserves (LNR)

Desk Study - Protected Species Records

- Notable Bat Species
- Grass Snake
- Great Crested Newt
- Hedgehog
- Slow-worm
- London BAP Bird Record
- Schedule 1 Bird Record

Field Survey

- Building With Bat Roost Potential
- 250m Great Crested Newt Sensitive Area
- Kingfisher identified along Weald Brook
- Common Lizard
- Otter Spraint
- Bat Roost - Tree

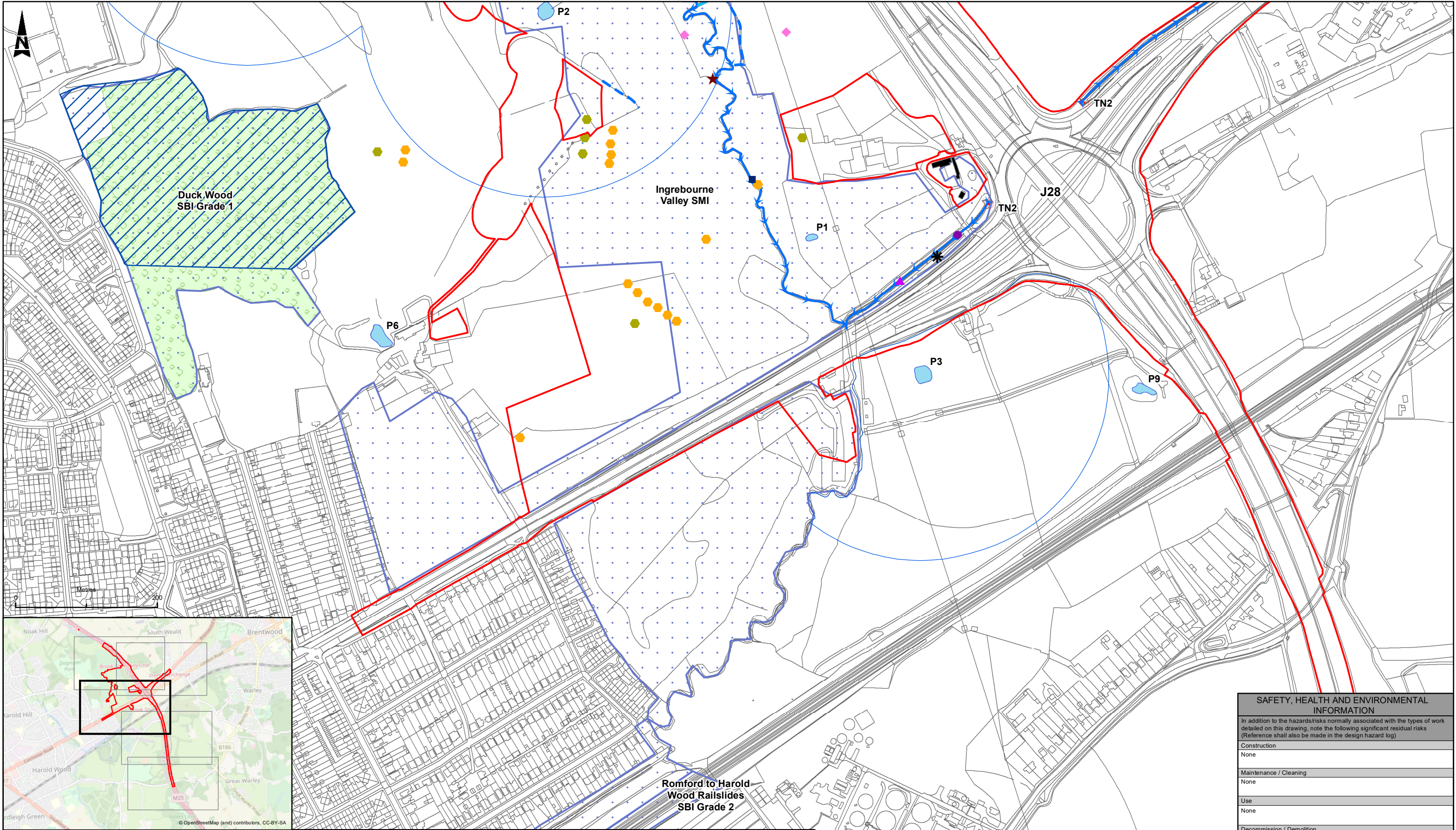
TN1 Penny Royal
TN2 Himalayan Balsam
Field Survey - Invasive Species

- Himalayan Balsam
- Signal Crayfish Recorded

Note: For locations of non-native goldenrod, see Phase 1 habitat drawing (Figure 7.2).

SAFETY, HEALTH AND ENVIRONMENTAL INFORMATION	
In addition to the hazards/risks normally associated with the types of work detailed on this drawing, note the following significant residual risks (Reference shall also be made in the design hazard log)	
Construction	None
Maintenance / Cleaning	None
Use	None
Decommission / Demolition	None

Description							Drawing Suitability			Status		Project Title																		
Status							PUBLISHED			A1		M25 Junction 28																		
Revision																														
Drawn							Checked			Reviewed		Authorised																		
Issue Date																														
Description												Drawing Title																		
Status							ATKINS			Epsom Gateway Ashley Avenue Epsom Surrey KT18 5AL																				
Revision							Member of the SNC-Lavalin Group																							
Drawn																														
Checked							Reviewed			Tel: +44 (0) 1372 726140		FIGURE 7.1 ECOLOGICAL CONSTRAINTS SHEET 2 OF 5																		
Issue Date										Fax: +44 (0) 1372 740055																				
Drawn																														
Checked																														
Reviewed							Authorised			Copyright © Atkins Limited (2021)																				
Issue Date										www.atkinsglobal.com																				
Drawn																														
Description												Client			Drawing Number															
PUBLISHED															Project			Originator			Volume									
Status							A1			HE551519 - ATK - EBD																				
Revision							C02			XX - GS - GI - 000004																				
Drawn							SD																							
Checked							JB			Reviewed			EM			Role			Number											
Issue Date							22/06/21			PG						Original Size:			A3											
Description												Scale			1:5,000			Project Ref:			Sheet:			Rev:						
PUBLISHED																		2 of 5			C02									
Status							A1			C01			SD			JB			EM			PG			Issue Date			18/05/20		
Drawn																														
Checked																														
Reviewed																														
Authorised																														
Issue Date																														



This map is reproduced from Ordnance Survey material with the permission of Ordnance Survey on behalf of the controller of Her Majesty's Stationery Office. © Crown Copyright. Unauthorised reproduction infringes Crown copyright and may lead to prosecution or civil proceedings.
CLIENT NAME: Highways England LICENCE NUMBER: 10003849
© Natural England copyright. Contains Ordnance Survey data © Crown copyright and database right 2021. LNR data: NB This national dataset is "indicative" not "definitive". Definitive information can only be provided by individual local authorities and you should refer directly to their information for all purposes that require the most up to date and complete dataset.

LEGEND

- DCO Boundary
- Ponds
- Running water
- Wet ditch
- Dry ditch
- Target Notes

Desk Study - Designated Sites And Ancient Woodland

- Sites of Importance for Nature Conservation (SINCs, name for locally designated site in Greater London)
- Local Wildlife Sites (LoWS, name of locally designated sites in Essex)
- Ancient Woodland
- Local Nature Reserves (LNR)

Desk Study - Protected Species Records

- Notable Bat Species
- Grass Snake
- Great Crested Newt
- Hedgehog
- Slow-worm
- London BAP Bird Record
- Schedule 1 Bird Record

Field Survey

- Building With Bat Roost Potential
- 250m Great Crested Newt Sensitive Area
- Kingfisher identified along Weald Brook
- Common Lizard
- Otter Spraint
- Bat Roost - Tree

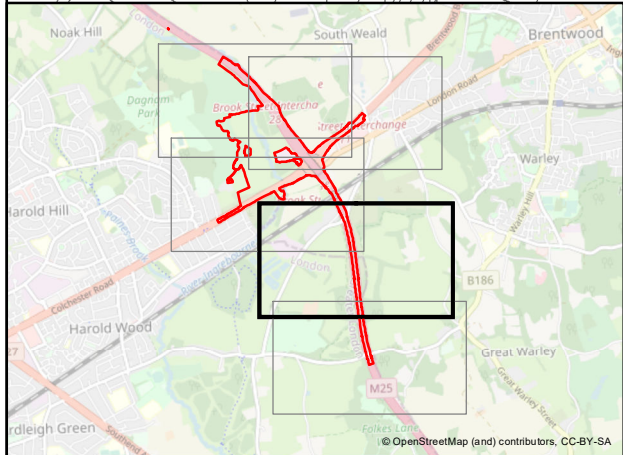
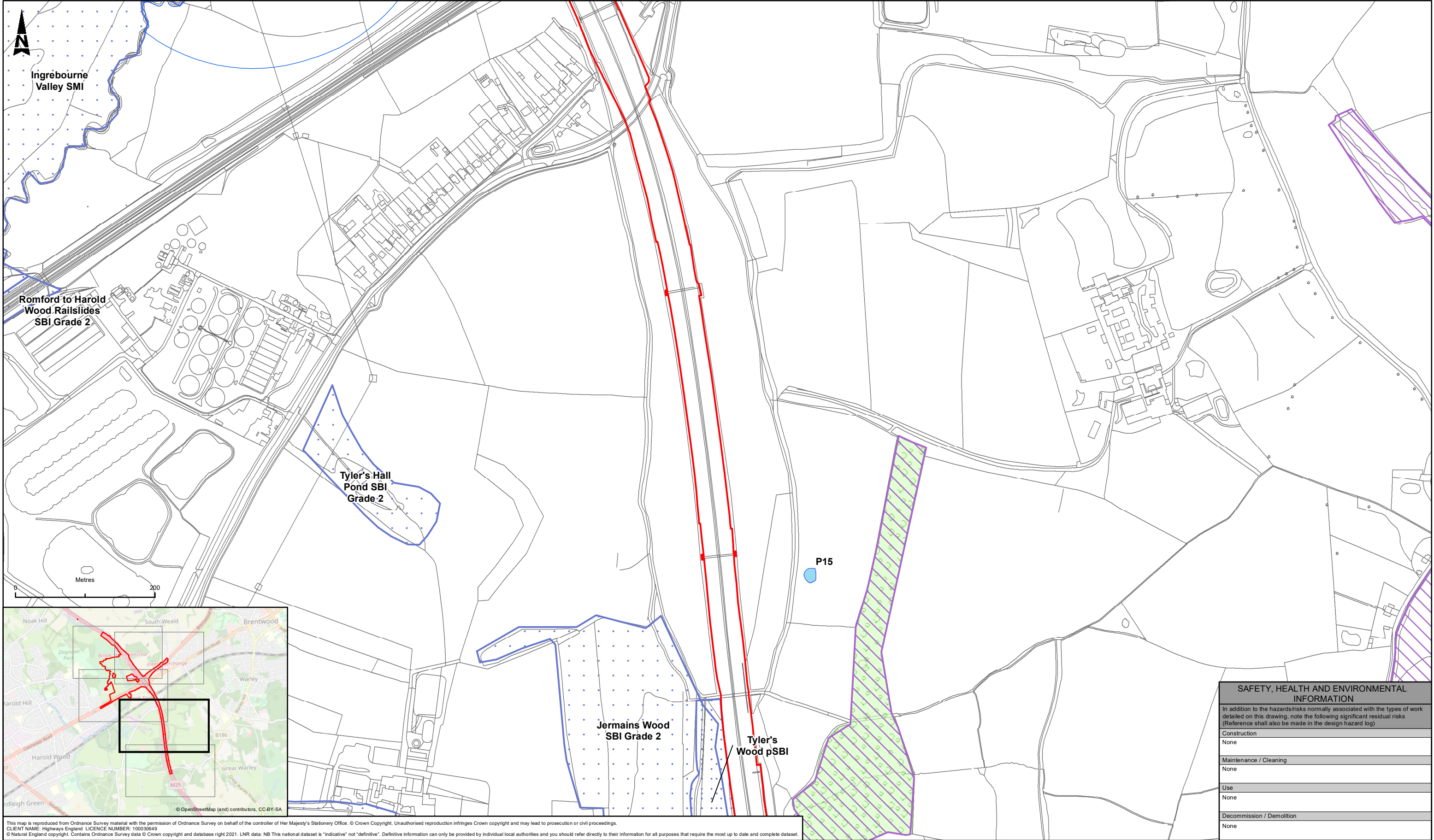
TN1 Penny Royal
TN2 Himalayan Balsam
Field Survey - Invasive Species

- Himalayan Balsam
- Signal Crayfish Recorded

Note: For locations of non-native goldenrod, see Phase 1 habitat drawing (Figure 7.2).

SAFETY, HEALTH AND ENVIRONMENTAL INFORMATION	
In addition to the hazards/risks normally associated with the types of work detailed on this drawing, note the following significant residual risks (Reference shall also be made in the design hazard log)	
Construction	None
Maintenance / Cleaning	None
Use	None
Decommission / Demolition	None

Description							Drawing Suitability			Status		Project Title		
Status							PUBLISHED			A1		M25 Junction 28		
Revision														
Drawn														
Checked														
Reviewed														
Authorised														
Issue Date														
Description														
Status							ATKINS					Drawing Title		
Revision							Member of the SNC-Lavalin Group					FIGURE 7.1		
Drawn												ECOLOGICAL CONSTRAINTS		
Checked												SHEET 3 OF 5		
Reviewed														
Authorised														
Issue Date														
Description														
Status							Copyright © Atkins Limited (2021)							
Revision														
Drawn														
Checked														
Reviewed														
Authorised														
Issue Date														
Description														
PUBLISHED														
Status							Client					Drawing Number		
Revision												Project		
A1												Originator		
Drawn												Volume		
SD												HE551519 - ATK - EBD		
Checked												XX - GS - GI - 000005		
JB														
Reviewed														
EM														
Authorised														
PG														
Issue Date														
22/06/21														
Description														
PUBLISHED														
Status														
Revision														
C01														
Drawn														
SD														
Checked														
JB														
Reviewed														
EM														
Authorised														
PG														
Issue Date														
18/05/20														
Description														
PUBLISHED														
Status														
Revision														
C01														
Drawn														
SD														
Checked														
JB														
Reviewed														
EM														
Authorised														
PG														
Issue Date														
18/05/20														
Description														
PUBLISHED														
Status														
Revision														
C01														
Drawn														
SD														
Checked														
JB														
Reviewed														
EM														
Authorised														
PG														
Issue Date														
18/05/20														
Description														
PUBLISHED														
Status														
Revision														
C01														
Drawn														
SD														
Checked														
JB														
Reviewed														
EM														
Authorised														
PG														
Issue Date														
18/05/20														
Description														
PUBLISHED														
Status														
Revision														
C01														
Drawn														
SD														
Checked														
JB														
Reviewed														
EM														
Authorised														
PG														
Issue Date														
18/05/20														
Description														
PUBLISHED														
Status														
Revision														
C01														
Drawn														
SD														
Checked														
JB														
Reviewed														
EM														
Authorised														
PG														
Issue Date														
18/05/20														
Description														
PUBLISHED														
Status														
Revision														
C01														
Drawn														
SD														
Checked														
JB														
Reviewed														
EM														
Authorised														
PG														
Issue Date														
18/05/20														
Description														
PUBLISHED														
Status														
Revision														
C01														
Drawn														
SD														
Checked														
JB														
Reviewed														
EM														
Authorised														
PG														
Issue Date														
18/05/20														
Description														
PUBLISHED														
Status														
Revision														
C01														
Drawn														
SD														
Checked														
JB														
Reviewed														
EM														
Authorised														
PG														
Issue Date														
18/05/20														
Description														
PUBLISHED														
Status														
Revision														
C01														
Drawn														
SD														
Checked														
JB														
Reviewed														
EM														
Authorised														
PG														
Issue Date														
18/05/20														
Description														
PUBLISHED														
Status														
Revision														
C01														
Drawn														
SD														
Checked														
JB														
Reviewed														
EM														
Authorised														
PG														
Issue Date														
18/05/20														
Description														
PUBLISHED														
Status														
Revision														
C01														
Drawn														
SD														
Checked														
JB														
Reviewed														
EM														
Authorised														
PG														
Issue Date														
18/05/20														
Description														
PUBLISHED														
Status														
Revision														
C01														
Drawn														
SD														
Checked														
JB														
Reviewed														
EM														
Authorised														
PG														
Issue Date														
18/05/20														
Description														
PUBLISHED														
Status														
Revision														
C01														
Drawn														
SD														
Checked														
JB														
Reviewed														
EM														
Authorised														
PG														
Issue Date														
18/05/20														
Description														
PUBLISHED														
Status														
Revision														
C01														
Drawn														
SD														
Checked														
JB														
Reviewed														
EM														
Authorised														
PG														
Issue Date														
18/05/20														
Description														
PUBLISHED														
Status														
Revision														
C01														
Drawn														
SD														
Checked														
JB														
Reviewed														
EM														
Authorised														
PG														
Issue Date														
18/05/20														
Description														
PUBLISHED														
Status														
Revision														
C01														
Drawn														
SD														
Checked														
JB														
Reviewed														
EM														
Authorised														
PG														
Issue Date														
18/05/20														
Description														
PUBLISHED														
Status														
Revision														
C01														
Drawn														
SD														
Checked														
JB														
Reviewed														
EM														
Authorised														
PG														
Issue Date														
18/05/20														
Description														
PUBLISHED														
Status														
Revision														
C01														
Drawn														
SD														
Checked														
JB														
Reviewed														
EM														
Authorised														
PG														
Issue Date														
18/05/20														
Description														
PUBLISHED														
Status														
Revision														
C01														
Drawn														
SD														
Checked														
JB														
Reviewed														
EM														
Authorised														
PG														
Issue Date														
18/05/20														
Description														
PUBLISHED														
Status														
Revision														
C01														
Drawn														
SD														
Checked														
JB														
Reviewed														
EM														
Authorised														



This map is reproduced from Ordnance Survey material with the permission of Ordnance Survey on behalf of the controller of Her Majesty's Stationery Office. © Crown Copyright. Unauthorised reproduction infringes Crown copyright and may lead to prosecution or civil proceedings.
CLIENT NAME: Highways England LICENCE NUMBER: 100030649
© Natural England copyright. Contains Ordnance Survey data © Crown copyright and database right 2021. LNR data: NB This national dataset is "indicative" not "definitive". Definitive information can only be provided by individual local authorities and you should refer directly to their information for all purposes that require the most up to date and complete dataset.

LEGEND

DCO Boundary

Ponds

Running water

Wet ditch

Dry ditch

Target Notes

Desk Study - Designated Sites And Ancient Woodland

Sites of Importance for Nature Conservation (SINCs, name for locally designated site in Greater London)

Local Wildlife Sites (LoWS, name of locally designated sites in Essex)

Ancient Woodland

Local Nature Reserves (LNR)

Desk Study - Protected Species Records

Notable Bat Species

Grass Snake

Great Crested Newt

Hedgehog

Slow-worm

London BAP Bird Record

Schedule 1 Bird Record

Field Survey

Building With Bat Roost Potential

250m Great Crested Newt Sensitive Area

Kingfisher identified along Weald Brook

Common Lizard

Otter Spraint

Bat Roost - Tree

TN1 Penny Royal

TN2 Himalayan Balsam

Field Survey - Invasive Species

Himalayan Balsam

Signal Crayfish Recorded

Note: For locations of non-native goldenrod, see Phase 1 habitat drawing (Figure 7.2).

Description

Status

Revision

Drawn

Checked

Reviewed

Authorised

Issue Date

Description

Status

Revision

Drawn

Checked

Reviewed

Authorised

Issue Date

Description

Status

Revision

Drawn

Checked

Reviewed

Authorised

Issue Date

Description

Status

Revision

Drawn

Checked

Reviewed

Authorised

Issue Date

Description

Status

Revision

Drawn

Checked

Reviewed

Authorised

Issue Date

Description

Status

Revision

Drawn

Checked

Reviewed

Authorised

Issue Date

Drawing Suitability

Status

Project Title

Drawing Title

Drawing Number

ATKINS

Member of the SNC-Lavalin Group

Epsom Gateway
Ashley Avenue
Epsom
Surrey
KT18 5AL
Tel: +44 (0) 1372 726140
Fax: +44 (0) 1372 740055
www.atkinsglobal.com

Copyright © Atkins Limited (2021)

Client

highways
england

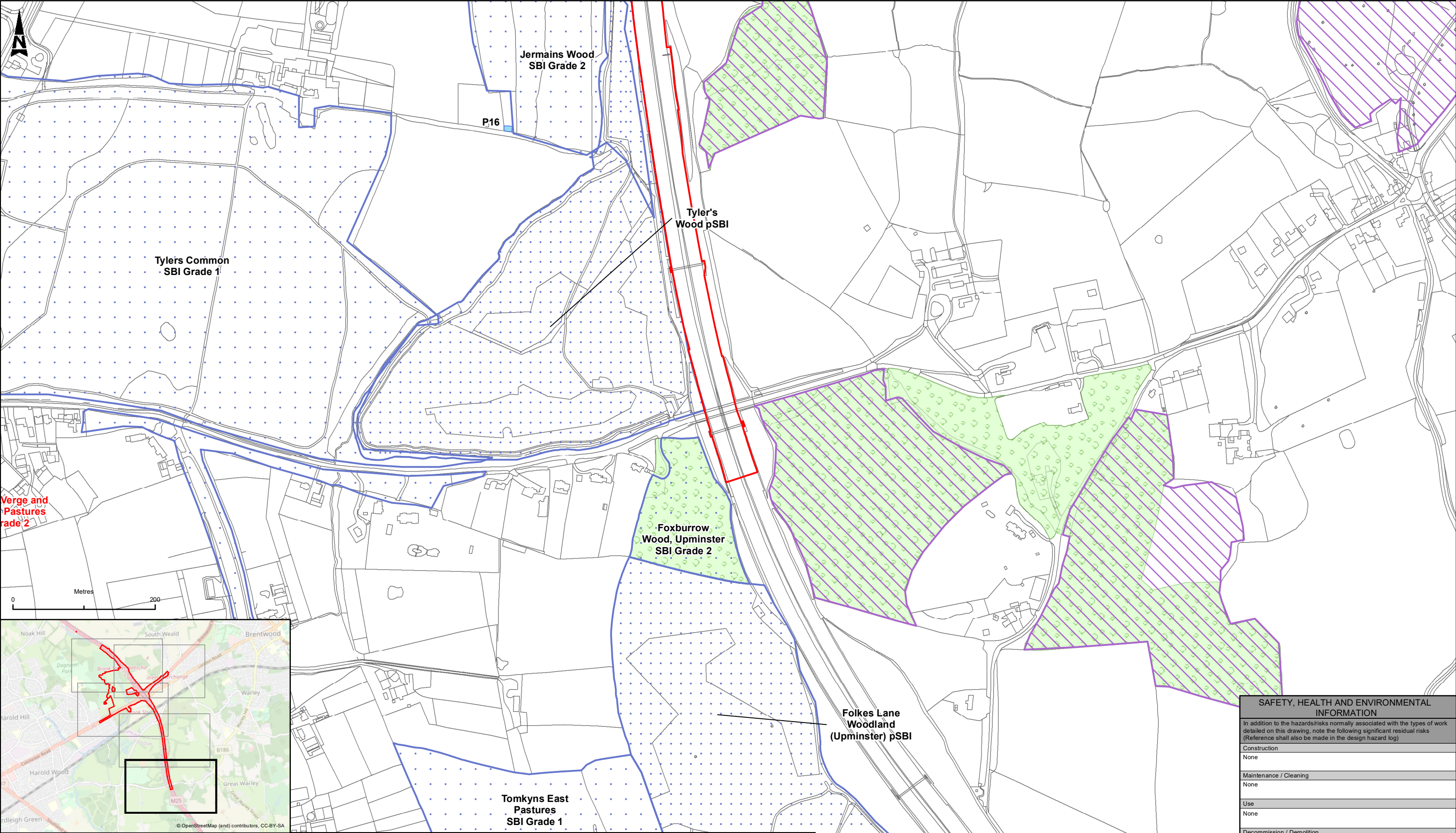
Original Size: A3

Scale: 1:5,000

Project Ref. No: ---

Sheet: 4 of 5

Rev: C02



This map is reproduced from Ordnance Survey material with the permission of Ordnance Survey on behalf of the controller of Her Majesty's Stationery Office. © Crown Copyright. Unauthorised reproduction infringes Crown copyright and may lead to prosecution or civil proceedings.
CLIENT NAME: Highways England LICENCE NUMBER: 10003849
© Natural England copyright. Contains Ordnance Survey data © Crown copyright and database right 2021. LNR data: NB This national dataset is "indicative" not "definitive". Definitive information can only be provided by individual local authorities and you should refer directly to their information for all purposes that require the most up to date and complete dataset.

LEGEND

DCO Boundary

Ponds

Running water

Wet ditch

Dry ditch

Target Notes

Desk Study - Designated Sites And Ancient Woodland

Sites of Importance for Nature Conservation (SINCs, name for locally designated site in Greater London)

Local Wildlife Sites (LoWS, name of locally designated sites in Essex)

Ancient Woodland

Local Nature Reserves (LNR)

Desk Study - Protected Species Records

Notable Bat Species

Grass Snake

Great Crested Newt

Hedgehog

Slow-worm

London BAP Bird Record

Schedule 1 Bird Record

Field Survey

Building With Bat Roost Potential

250m Great Crested Newt Sensitive Area

Kingfisher identified along Weald Brook

Common Lizard

Otter Spraint

Bat Roost - Tree

TN1 Penny Royal
TN2 Himalayan Balsam
Field Survey - Invasive Species

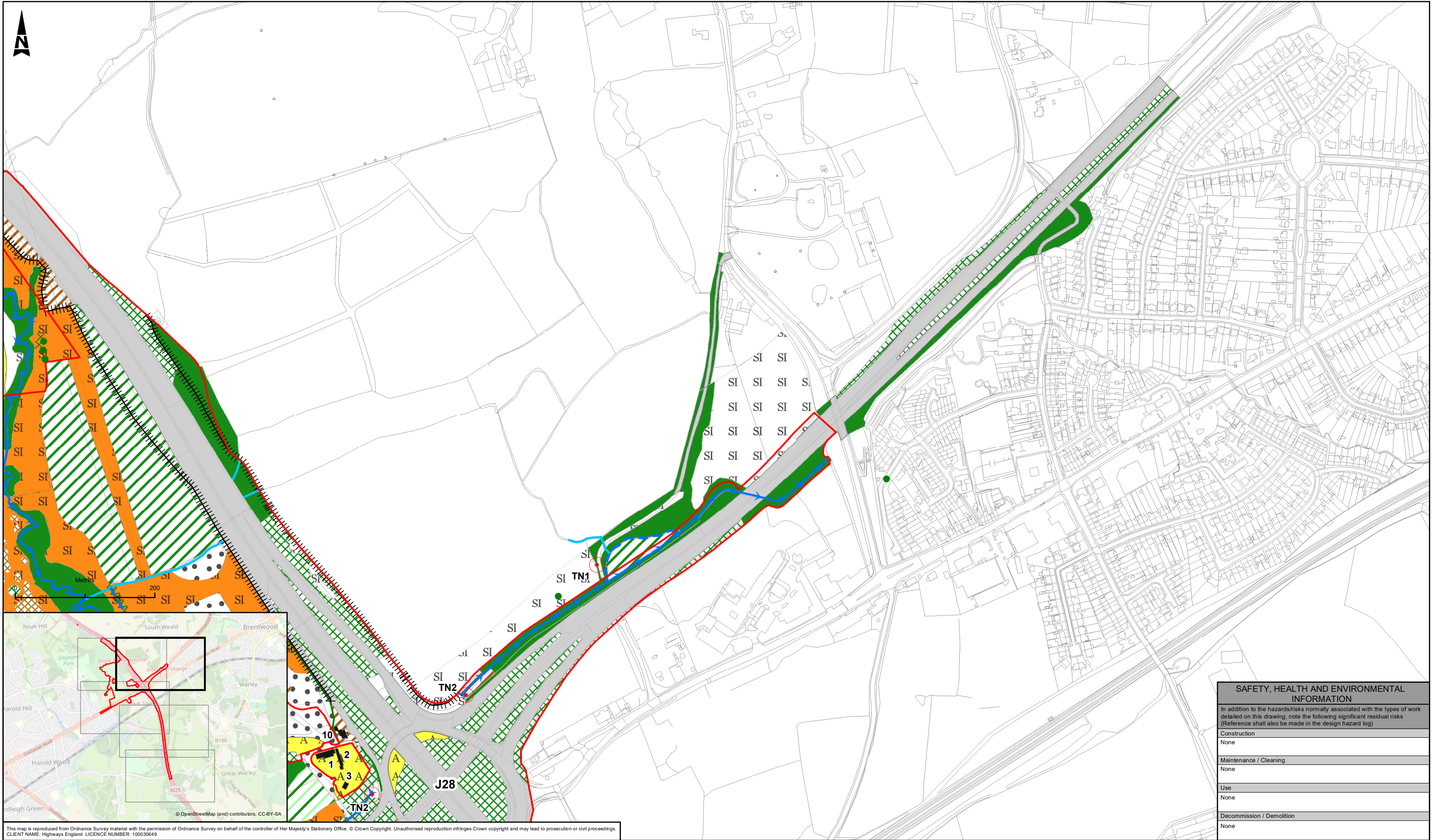
Himalayan Balsam

Signal Crayfish Recorded

Note: For locations of non-native goldenrod, see Phase 1 habitat drawing (Figure 7.2).

SAFETY, HEALTH AND ENVIRONMENTAL INFORMATION	
In addition to the hazards/risks normally associated with the types of work detailed on this drawing, note the following significant residual risks (Reference shall also be made in the design hazard log)	
Construction	None
Maintenance / Cleaning	None
Use	None
Decommission / Demolition	None

Description							Drawing Suitability			Status	Project Title			
Status Revision Drawn Checked Reviewed Authorised Issue Date							PUBLISHED			A1	M25 Junction 28			
Description							ATKINS			Epsom Gateway Ashley Avenue Epsom Surrey KT18 5AL	Drawing Title			
Status Revision Drawn Checked Reviewed Authorised Issue Date							Member of the SNC-Lavalin Group			Tel: +44 (0) 1372 726140 Fax: +44 (0) 1372 740055	FIGURE 7.1 ECOLOGICAL CONSTRAINTS SHEET 5 OF 5			
Description							Copyright © Atkins Limited (2021)			www.atkinsglobal.com				
Status Revision Drawn Checked Reviewed Authorised Issue Date														
Description PUBLISHED							Client				Drawing Number			
Status A1 Revision C02 Drawn SD Checked JB Reviewed EM Authorised PG Issue Date 22/06/21											Project Originator Volume HE551519 - ATK - EBD XX - GS - GI - 000007			
Description PUBLISHED											Location Type Role Number			
Status A1 Revision C01 Drawn SD Checked JB Reviewed EM Authorised PG Issue Date 18/05/20											Original Size: A3 Scale: 1:5,000 Project Ref. No: --- Sheet: 5 of 5 Rev: C02			



This map is reproduced from Ordnance Survey material with the permission of Ordnance Survey on behalf of the controller of Her Majesty's Stationery Office. © Crown Copyright. Unauthorised reproduction infringes Crown copyright and may lead to prosecution or civil proceedings.
CLIENT NAME: Highways England LICENCE NUMBER: 100030649

LEGEND

DCO Boundary

Scattered scrub

Scattered trees

Target Notes

TN1 Penny Royal

TN2 Himalayan Balsam

Phase 1 Habitats

Broad-leaved Semi-natural Woodland

Broad-leaved Plantation Woodland

Mixed Plantation Woodland

Dense Scrub

Scattered Scrub

Broad-leaved Scattered Trees

Semi-improved Neutral Grassland

Poor Semi-improved Grassland

Improved Grassland

Tall Ruderal Herb and Fern

Standing Water

Arable Cultivated Land

Amenity Grassland

Introduced Shrub - Non-Native Invasive Goldenrod

Building

Bare Ground

Hardstanding

Sand Bunkers

Species-rich defunct hedge

Species poor hedge and trees

Species-poor intact hedge

Fence

Running water

Wet ditch

Dry ditch

Grass track

Description

Status

Revision

Drawn

Checked

Reviewed

Authorised

Issue Date

Description

Status

Revision

Drawn

Checked

Reviewed

Authorised

Issue Date

Description

Status

Revision

Drawn

Checked

Reviewed

Authorised

Issue Date

Description

Status

Revision

Drawn

Checked

Reviewed

Authorised

Issue Date

Description

Status

Revision

Drawn

Checked

Reviewed

Authorised

Issue Date

Description

Status

Revision

Drawn

Checked

Reviewed

Authorised

Issue Date

ATKINS

Member of the SNC-Lavalin Group

Epsom Gateway

Ashley Avenue

Epsom

Surrey

KT18 5AL

Tel: +44 (0) 1372 726140

Fax: +44 (0) 1372 740055

www.atkinsglobal.com

Copyright © Atkins Limited (2021)

highways

england

Project

Originator

Volume

HE551519 - ATK - EBD

XX - GS - GI - 000009

Location

Type

Project Ref. No.

Role

Number

Rev.

A3

1:5,000

2 of 5

C02

SAFETY, HEALTH AND ENVIRONMENTAL INFORMATION

In addition to the hazards/risks normally associated with the types of work detailed on this drawing, note the following significant residual risks (Reference shall also be made in the design hazard log)

Construction

None

Maintenance / Cleaning

None

Use

None

Decommission / Demolition

None

Project Title

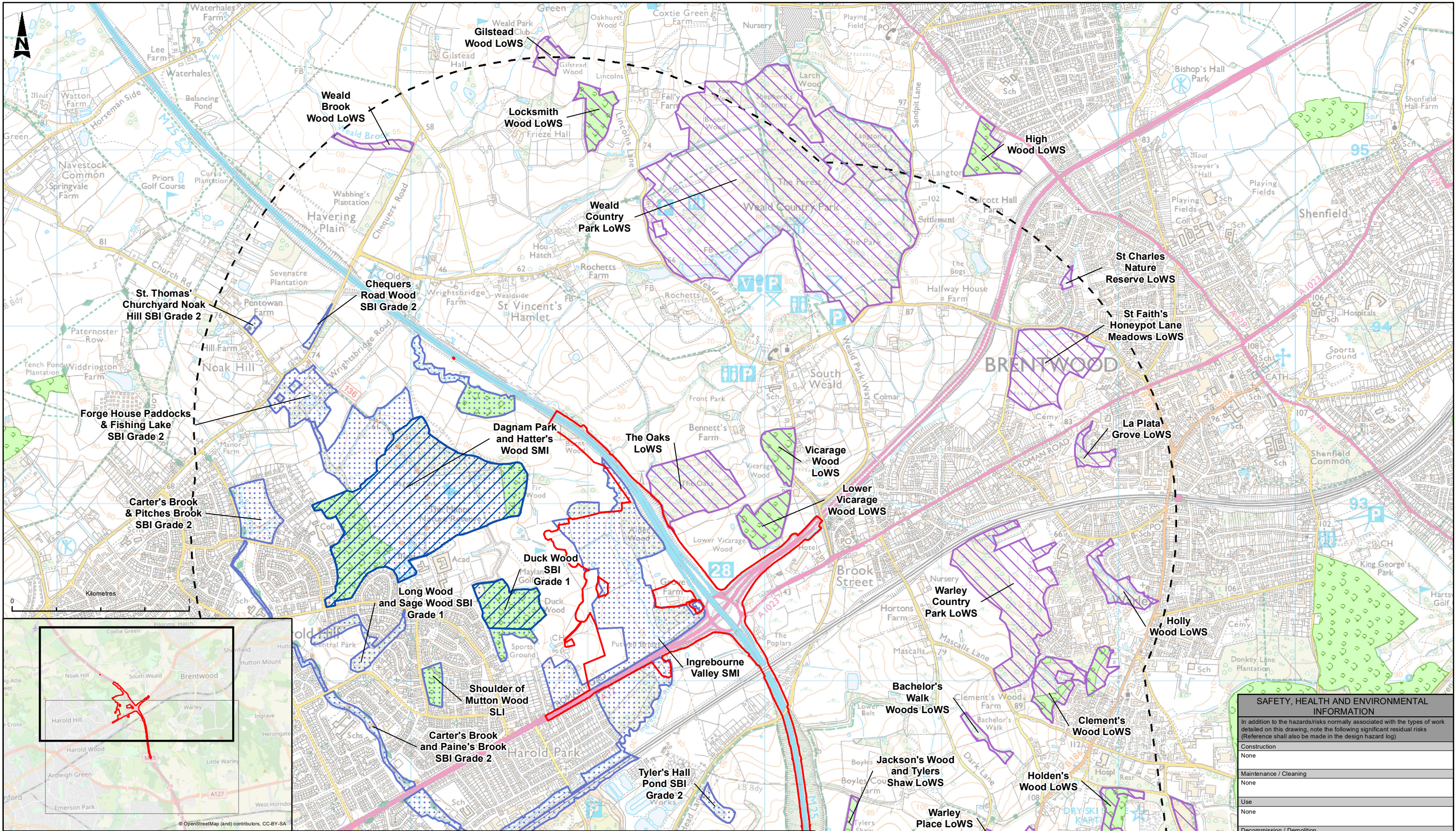
Drawing Title

Drawing Number

M25 Junction 28

FIGURE 7.2
PHASE 1 HABITAT SURVEY
SHEET 2 OF 5

HE551519 - ATK - EBD
XX - GS - GI - 000009



This map is reproduced from Ordnance Survey material with the permission of Ordnance Survey on behalf of the controller of Her Majesty's Stationery Office. © Crown Copyright. Unauthorised reproduction infringes Crown copyright and may lead to prosecution or civil proceedings.
CLIENT NAME: Highways England LICENCE NUMBER: 10003649
© Natural England copyright. Contains Ordnance Survey data © Crown copyright and database right 2021. LNR data: NB This national dataset is "indicative" not "definitive". Definitive information can only be provided by individual local authorities and you should refer directly to their information for all purposes that require the most up to date and complete dataset.

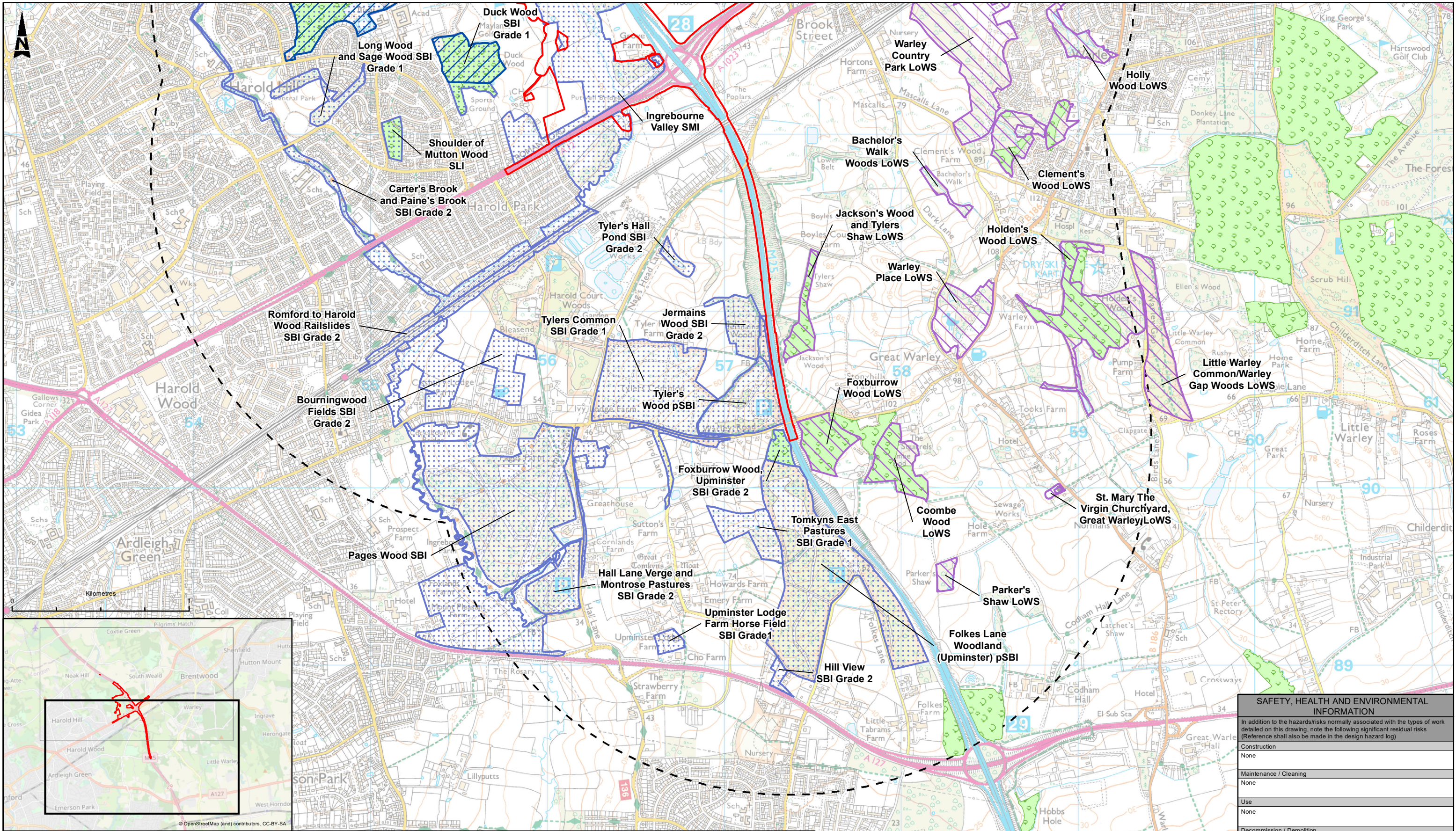
LEGEND

- DCO Boundary
- 2km Study Area
- Ancient Woodland
- Local Nature Reserves (LNR)
- Local Wildlife Sites (LoWS, name of locally designated sites in Essex)

Sites of Importance for Nature Conservation (SINCs, name of locally designated sites in Greater London)

Classified into four categories:
Sites of Metropolitan Importance (SMI);
Sites of Borough Importance Grade 1 (SBI Grade 1);
Sites of Borough Importance Grade 2 (SBI Grade 2); and
Sites of Local Importance (SLI).
Additional sites identified in the Havering Local Plan 2016-2031 Proposals Map Changes Booklet July 2017 are identified as Proposed Sites of Borough Importance (pSBI).

Description		Drawing Suitability		Status		Project Title	
Status	Revision	Drawn	Checked	Reviewed	Authorised	Issue Date	M25 Junction 28
Description		PUBLISHED		A1		Drawing Title	
Status	Revision	Drawn	Checked	Reviewed	Authorised	Issue Date	FIGURE 7.3 BIODIVERSITY DESIGNATED SITES SHEET 1 OF 2
Description		ATKINS		Member of the SNC-Lavalin Group		Drawing Number	
Status	Revision	Drawn	Checked	Reviewed	Authorised	Issue Date	Project Originator Volume HE551519 - ATK - EBD XX - GS - GI - 000001
Description		highways england		Copyright © Atkins Limited (2021) www.atkinsglobal.com		Location Scale Project Ref. No. Sheet Rev.	
Status	Revision	Drawn	Checked	Reviewed	Authorised	Issue Date	A3 1:20,000 --- 1 of 2 C03



This map is reproduced from Ordnance Survey material with the permission of Ordnance Survey on behalf of the controller of Her Majesty's Stationery Office. © Crown Copyright. Unauthorised reproduction infringes Crown copyright and may lead to prosecution or civil proceedings.
CLIENT NAME: Highways England LICENCE NUMBER: 10003649
© Natural England copyright. Contains Ordnance Survey data © Crown copyright and database right 2021. LNR data: NB This national dataset is "indicative" not "definitive". Definitive information can only be provided by individual local authorities and you should refer directly to their information for all purposes that require the most up to date and complete dataset.

LEGEND

- DCO Boundary
- 2km Study Area
- Ancient Woodland
- Local Nature Reserves (LNR)
- Local Wildlife Sites (LoWS, name of locally designated sites in Essex)

Sites of Importance for Nature Conservation (SINCs, name of locally designated sites in Greater London)

Classified into four categories:
Sites of Metropolitan Importance (SMI);
Sites of Borough Importance Grade 1 (SBI Grade 1);
Sites of Borough Importance Grade 2 (SBI Grade 2); and
Sites of Local Importance (SLI).
Additional sites identified in the Havering Local Plan 2016-2031 Proposals Map Changes Booklet July 2017 are identified as Proposed Sites of Borough Importance (pSBI).

Description		Drawing Suitability		Status		Project Title	
Status		PUBLISHED		A1		M25 Junction 28	
Description		ATKINS		Epsom Gateway Ashley Avenue Epsom Surrey KT18 5AL		Drawing Title	
Status		Member of the SNC-Lavalin Group		Tel: +44 (0) 1372 726140 Fax: +44 (0) 1372 740055		FIGURE 7.3 BIODIVERSITY DESIGNATED SITES SHEET 2 OF 2	
Description		Copyright © Atkins Limited (2021)		www.atkinsglobal.com		Drawing Number	
Status		Client				Project	
Description		HE551519 - ATK - EBD		XX - GS - GI - 000002		Originator	
Status		Location		Type		Role	
A1		A3		Scale 1:20,000		Project Ref. No.	
Revision C02		Drawn SD		Checked JB		Reviewed EM	
Issue Date 09/03/20		Authorised PG		Issue Date 09/03/20		Number	
						Rev: C03	

© Crown copyright (2021).

You may re-use this information (not including logos) free of charge in any format or medium, under the terms of the Open Government Licence. To view this licence:

visit www.nationalarchives.gov.uk/doc/open-government-licence/
write to the Information Policy Team, **The National Archives, Kew, London TW9 4DU**,
or email psi@nationalarchives.gsi.gov.uk.

Printed on paper from well-managed forests and other controlled sources.

Registered office Bridge House, 1 Walnut Tree Close, Guildford GU1 4LZ
Highways England Company Limited registered in England and Wales number 09346363

