

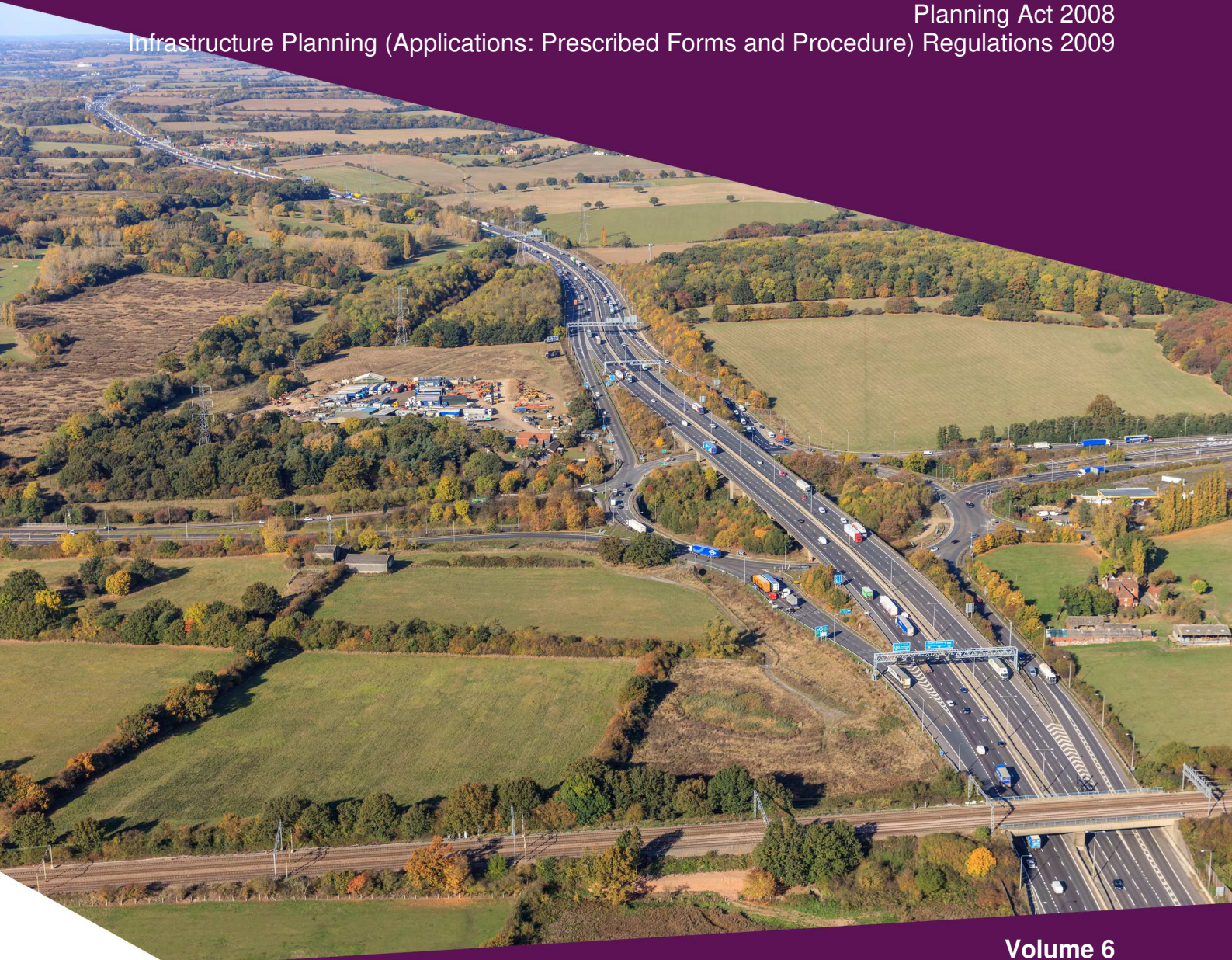
M25 junction 28 improvement scheme TR010029

6.2 Environmental Statement

Chapter 8: Road drainage and the water environment figures

APFP Regulation 5(2)(a)
Planning Act 2008

Infrastructure Planning (Applications: Prescribed Forms and Procedure) Regulations 2009



Infrastructure Planning

Planning Act 2008

The Infrastructure Planning (Applications: Prescribed Forms and Procedure) Regulations 2009

M25 junction 28 scheme Development Consent Order 202[x]

6.2 ENVIRONMENTAL STATEMENT CHAPTER 8: ROAD DRAINAGE AND THE WATER ENVIRONMENT FIGURES

Regulation Number:	Regulation 5(2)(a)
Planning Inspectorate Scheme Reference:	TR010029
Application Document Reference:	TR010029/APP/6.2
Author:	M25 junction 28 improvement scheme project team, Highways England

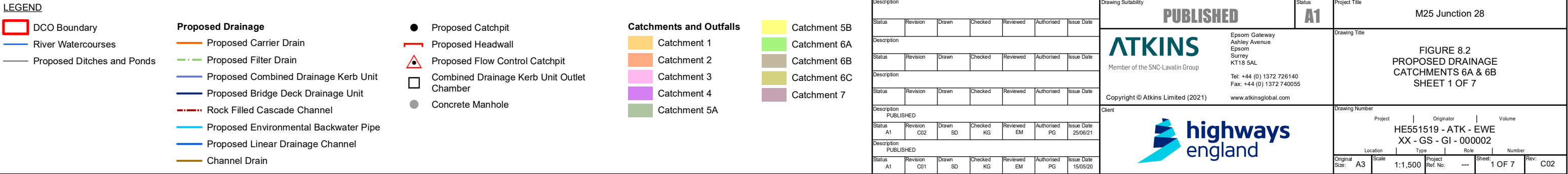
Version	Date	Status of Version
3	June 2021	Deadline 9, final version
2	4 February 2021	Deadline 2
1	May 2020	Application issue

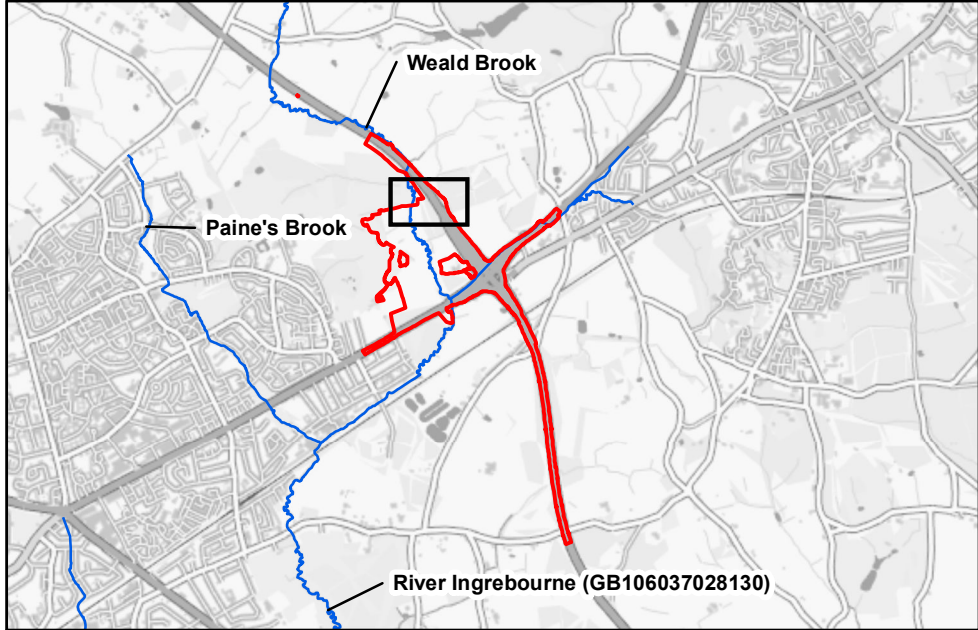
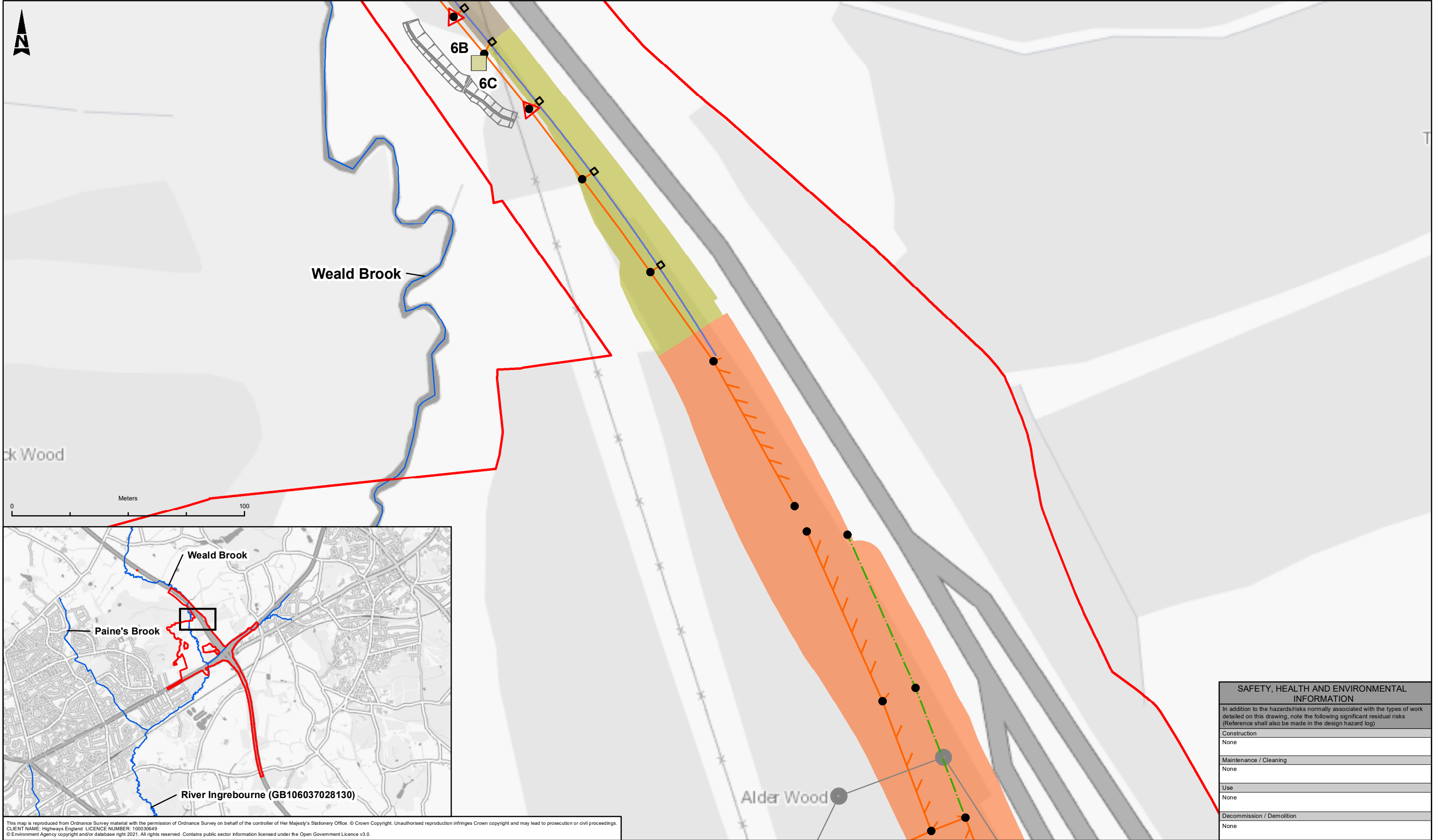
Table of contents

Chapter	Pages
1. Schedule of figures included in this application document	4

1. Schedule of figures included in this application document

Document title	Document number	Revision
Figure 8.1 Water Environment	TR010029/APP/6.2	2
Figure 8.2 Proposed Drainage Catchments 6A and 6B Sheet 1 of 7	TR010029/APP/6.2	1
Figure 8.2 Proposed Drainage Catchments 2 and 6C Sheet 2 of 7	TR010029/APP/6.2	1
Figure 8.2 Proposed Drainage Catchments 1 and 2 Sheet 3 of 7	TR010029/APP/6.2	1
Figure 8.2 Proposed Drainage Catchment 7 Sheet 4 of 7	TR010029/APP/6.2	1
Figure 8.2 Proposed Drainage Catchment 4, 5A and 5B Sheet 5 of 7	TR010029/APP/6.2	1
Figure 8.2 Proposed Drainage Catchment 1 and 3 Sheet 6 of 7	TR010029/APP/6.2	1
Figure 8.2 Proposed Drainage Catchment 3 Sheet 7 of 7	TR010029/APP/6.2	1





This map is reproduced from Ordnance Survey material with the permission of Ordnance Survey on behalf of the controller of Her Majesty's Stationery Office. © Crown Copyright. Unauthorised reproduction infringes Crown copyright and may lead to prosecution or civil proceedings.
CLIENT NAME: Highways England; LICENCE NUMBER: 100030649
© Environment Agency copyright and/or database right 2021. All rights reserved. Contains public sector information licensed under the Open Government Licence v3.0.

LEGEND

DCO Boundary

River Watercourses

Proposed Ditches and Ponds

Proposed Drainage

Proposed Carrier Drain

Proposed Filter Drain

Proposed Combined Drainage Kerb Unit

Proposed Bridge Deck Drainage Unit

Rock Filled Cascade Channel

Proposed Environmental Backwater Pipe

Proposed Linear Drainage Channel

Channel Drain

Proposed Catchpit

Proposed Headwall

Proposed Flow Control Catchpit

Combined Drainage Kerb Unit Outlet Chamber

Concrete Manhole

Catchments and Outfalls

Catchment 1

Catchment 2

Catchment 3

Catchment 4

Catchment 5A

Catchment 5B

Catchment 6A

Catchment 6B

Catchment 6C

Catchment 7

Description	Status	Revision	Drawn	Checked	Reviewed	Authorised	Issue Date
PUBLISHED	A1	C02	SD	KG	EM	PG	25/06/21
Description	Status	Revision	Drawn	Checked	Reviewed	Authorised	Issue Date
PUBLISHED	A1	C01	SD	KG	EM	PG	15/05/20

PUBLISHED

ATKINS

Member of the SNC-Lavalin Group

Epsom Gateway
Ashley Avenue
Epsom
Surrey
KT18 5AL

Tel: +44 (0) 1372 726140
Fax: +44 (0) 1372 740055
www.atkinsglobal.com

Copyright © Atkins Limited (2021)

Project Title

M25 Junction 28

Drawing Title

FIGURE 8.2
PROPOSED DRAINAGE
CATCHMENTS 2 & 6C
SHEET 2 OF 7

Drawing Number

Project: HE551519 - ATK - EWE
Originator: XX - GS - GI - 000003
Volume: ---

Original Size: A3

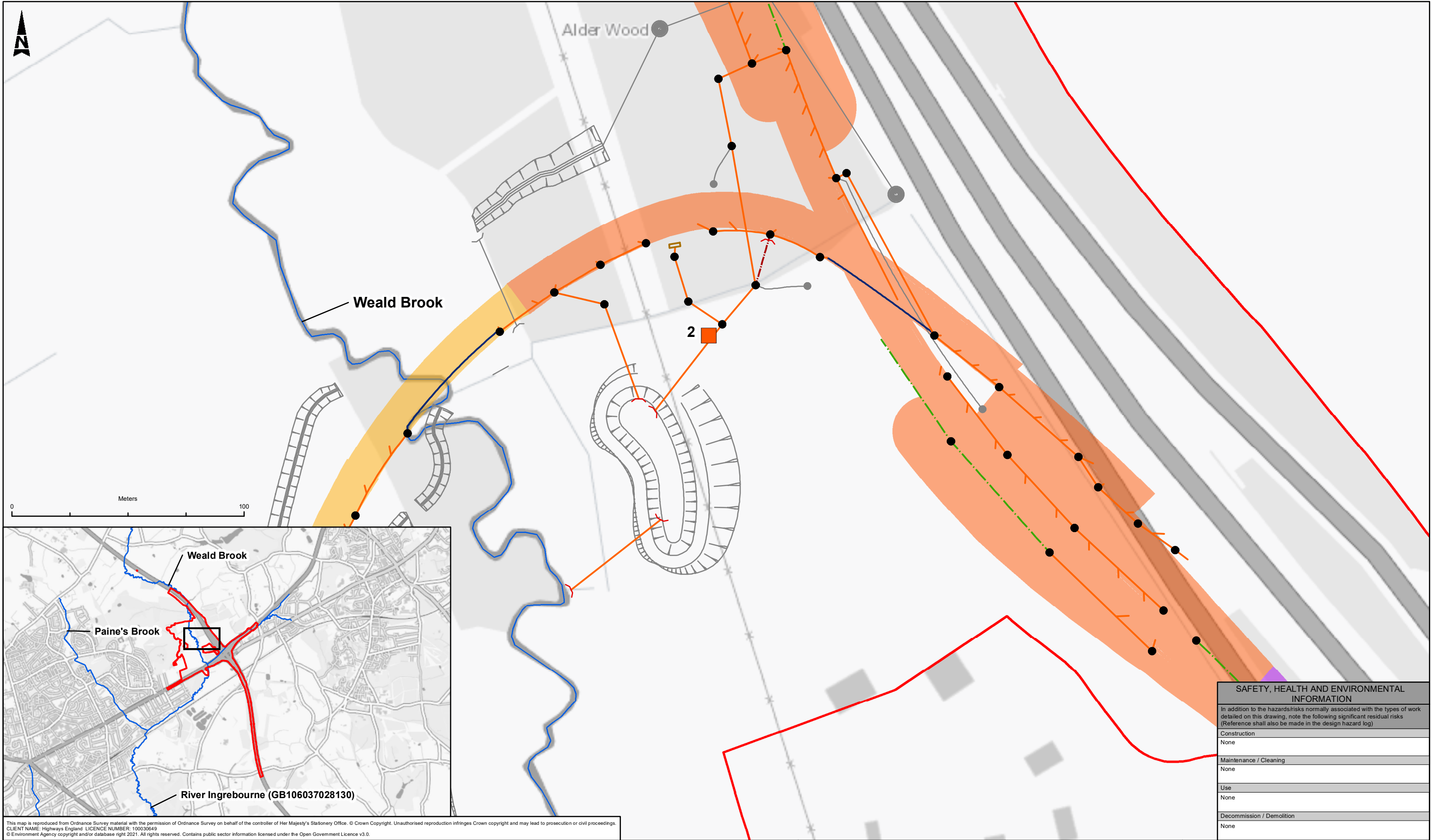
Scale: 1:1,500

Project Ref. No: ---

Role: ---

Sheet: 2 OF 7

Rev: C02



This map is reproduced from Ordnance Survey material with the permission of Ordnance Survey on behalf of the controller of Her Majesty's Stationery Office. © Crown Copyright. Unauthorised reproduction infringes Crown copyright and may lead to prosecution or civil proceedings.
CLIENT NAME: Highways England; LICENCE NUMBER: 100030649
© Environment Agency copyright and/or database right 2021. All rights reserved. Contains public sector information licensed under the Open Government Licence v3.0.

LEGEND

DCO Boundary

River Watercourses

Proposed Ditches and Ponds

Proposed Drainage

Proposed Carrier Drain

Proposed Filter Drain

Proposed Combined Drainage Kerb Unit

Proposed Bridge Deck Drainage Unit

Rock Filled Cascade Channel

Proposed Environmental Backwater Pipe

Proposed Linear Drainage Channel

Channel Drain

Proposed Catchpit

Proposed Headwall

Proposed Flow Control Catchpit

Combined Drainage Kerb Unit Outlet Chamber

Concrete Manhole

Catchments and Outfalls

Catchment 1

Catchment 2

Catchment 3

Catchment 4

Catchment 5A

Catchment 5B

Catchment 6A

Catchment 6B

Catchment 6C

Catchment 7

Description						
Status	Revision	Drawn	Checked	Reviewed	Authorised	Issue Date
Description						
Status	Revision	Drawn	Checked	Reviewed	Authorised	Issue Date
Description						
Status	Revision	Drawn	Checked	Reviewed	Authorised	Issue Date
Description						
PUBLISHED						
Status	Revision	Drawn	Checked	Reviewed	Authorised	Issue Date
A1	C02	SD	KG	EM	PG	25/06/21
Description						
PUBLISHED						
Status	Revision	Drawn	Checked	Reviewed	Authorised	Issue Date
A1	C01	SD	KG	EM	PG	15/05/20

Drawing Suitability

PUBLISHED

ATKINS

Member of the SNC-Lavalin Group

Copyright © Atkins Limited (2021)

www.atkinsglobal.com

Client

highways
england

Status

A1

Project Title

M25 Junction 28

Drawing Title

FIGURE 8.2
PROPOSED DRAINAGE
CATCHMENTS 1 & 2
SHEET 3 OF 7

Drawing Number

Project

HE551519 - ATK - EWE

Originator

XX - GS - GI - 000004

Volume

Original Size

A3

Scale

1:1,500

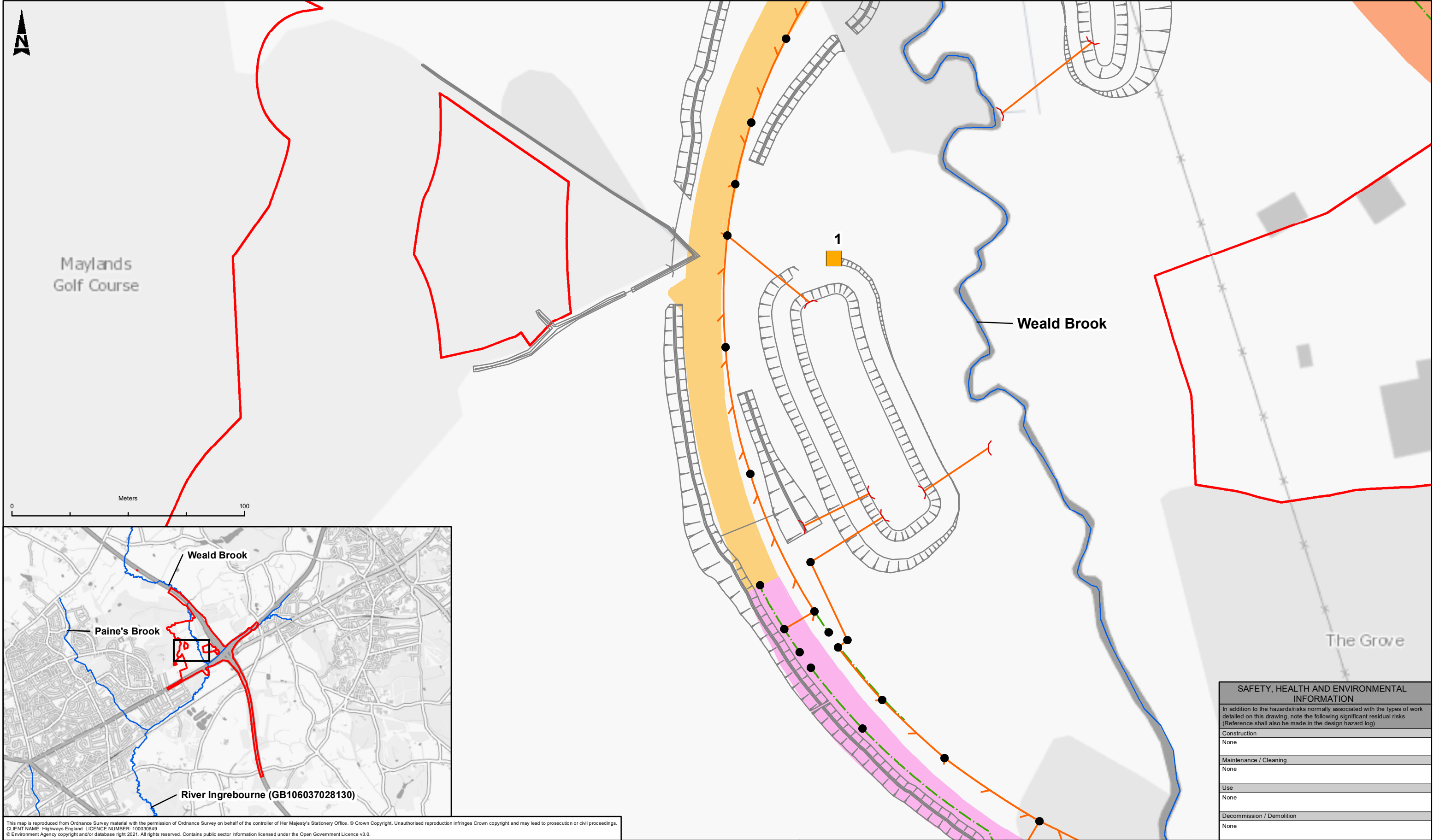
Project Ref. No.

Sheet

3 OF 7

Rev.

C02



This map is reproduced from Ordnance Survey material with the permission of Ordnance Survey on behalf of the controller of Her Majesty's Stationery Office. © Crown Copyright. Unauthorised reproduction infringes Crown copyright and may lead to prosecution or civil proceedings.
CLIENT NAME: Highways England; LICENCE NUMBER: 100030649
© Environment Agency copyright and/or database right 2021. All rights reserved. Contains public sector information licensed under the Open Government Licence v3.0.

LEGEND

DCO Boundary

River Watercourses

Proposed Ditches and Ponds

Proposed Drainage

Proposed Carrier Drain

Proposed Filter Drain

Proposed Combined Drainage Kerb Unit

Proposed Bridge Deck Drainage Unit

Rock Filled Cascade Channel

Proposed Environmental Backwater Pipe

Proposed Linear Drainage Channel

Channel Drain

Proposed Catchpit

Proposed Headwall

Proposed Flow Control Catchpit

Combined Drainage Kerb Unit Outlet Chamber

Concrete Manhole

Catchments and Outfalls

Catchment 1

Catchment 2

Catchment 3

Catchment 4

Catchment 5A

Catchment 5B

Catchment 6A

Catchment 6B

Catchment 6C

Catchment 7

Description						
Status	Revision	Drawn	Checked	Reviewed	Authorised	Issue Date
PUBLISHED						
Description						
Status	Revision	Drawn	Checked	Reviewed	Authorised	Issue Date
PUBLISHED						
Description						
Status	Revision	Drawn	Checked	Reviewed	Authorised	Issue Date
PUBLISHED						
Description						
Status	Revision	Drawn	Checked	Reviewed	Authorised	Issue Date
PUBLISHED						

Drawing Suitability

PUBLISHED

ATKINS

Member of the SNC-Lavalin Group

Epsom Gateway

Ashley Avenue

Epsom

Surrey

KT18 5AL

Tel: +44 (0) 1372 726140

Fax: +44 (0) 1372 740055

www.atkinsglobal.com

Copyright © Atkins Limited (2021)

Status

A1

Project Title

M25 Junction 28

Drawing Title

FIGURE 8.2
PROPOSED DRAINAGE
CATCHMENTS 1 & 3
SHEET 6 OF 7

Drawing Number

ProjectHE551519 - ATK - EWE
OriginatorXX - GS - GI - 000007
Volume

Original Size

A3

Scale

1:1,500

Project Ref. No.

Sheet

6 OF 7

Rev.

C02

© Crown copyright (2021).

You may re-use this information (not including logos) free of charge in any format or medium, under the terms of the Open Government Licence. To view this licence:

visit www.nationalarchives.gov.uk/doc/open-government-licence/
write to the Information Policy Team, **The National Archives, Kew, London TW9 4DU**,
or email psi@nationalarchives.gsi.gov.uk.

Printed on paper from well-managed forests and other controlled sources.

Registered office Bridge House, 1 Walnut Tree Close, Guildford GU1 4LZ
Highways England Company Limited registered in England and Wales number 09346363

