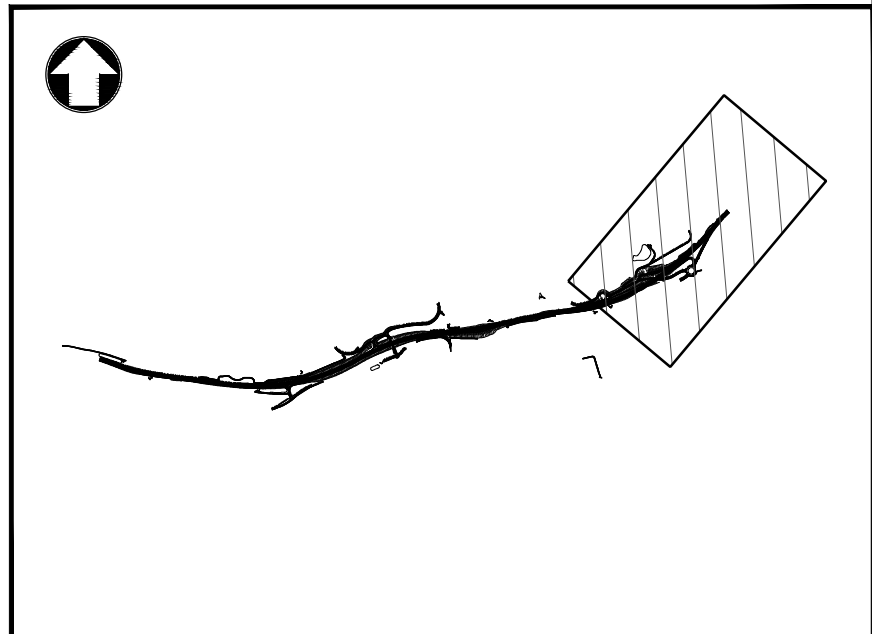
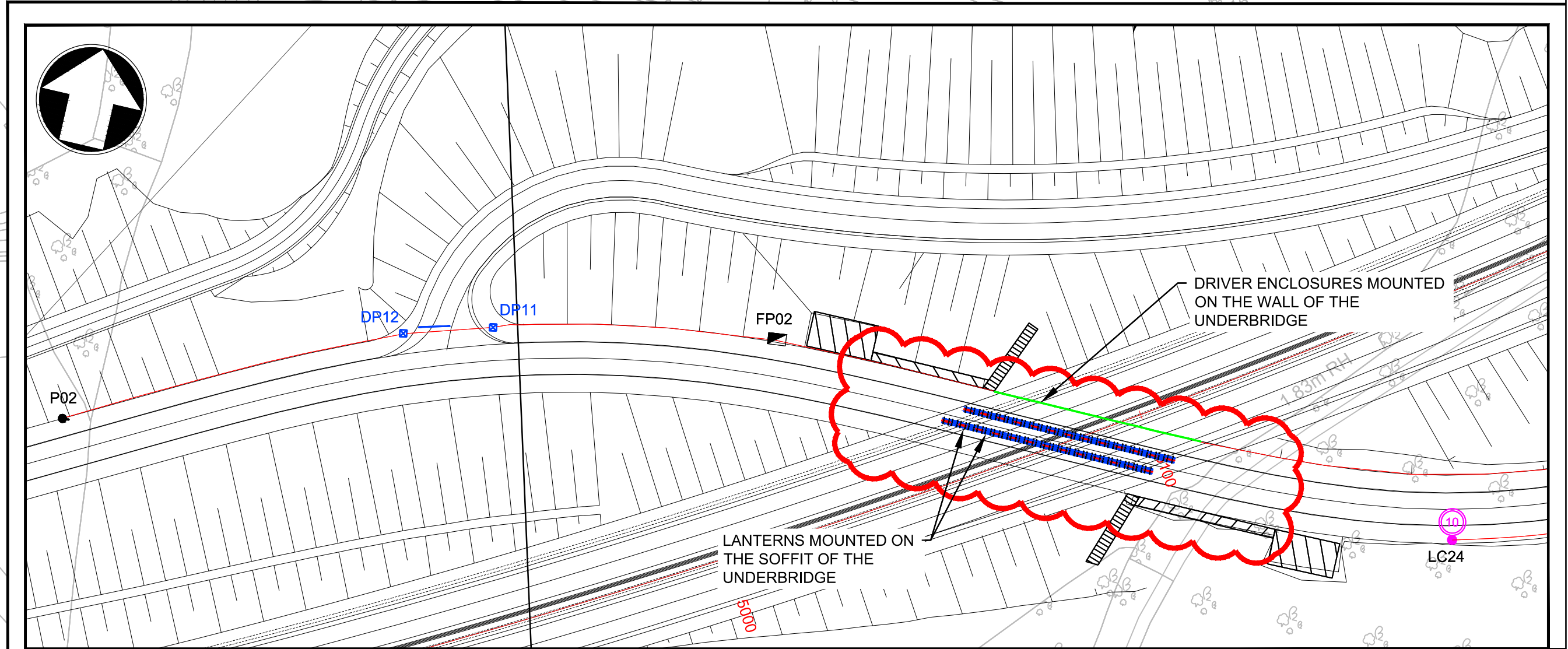
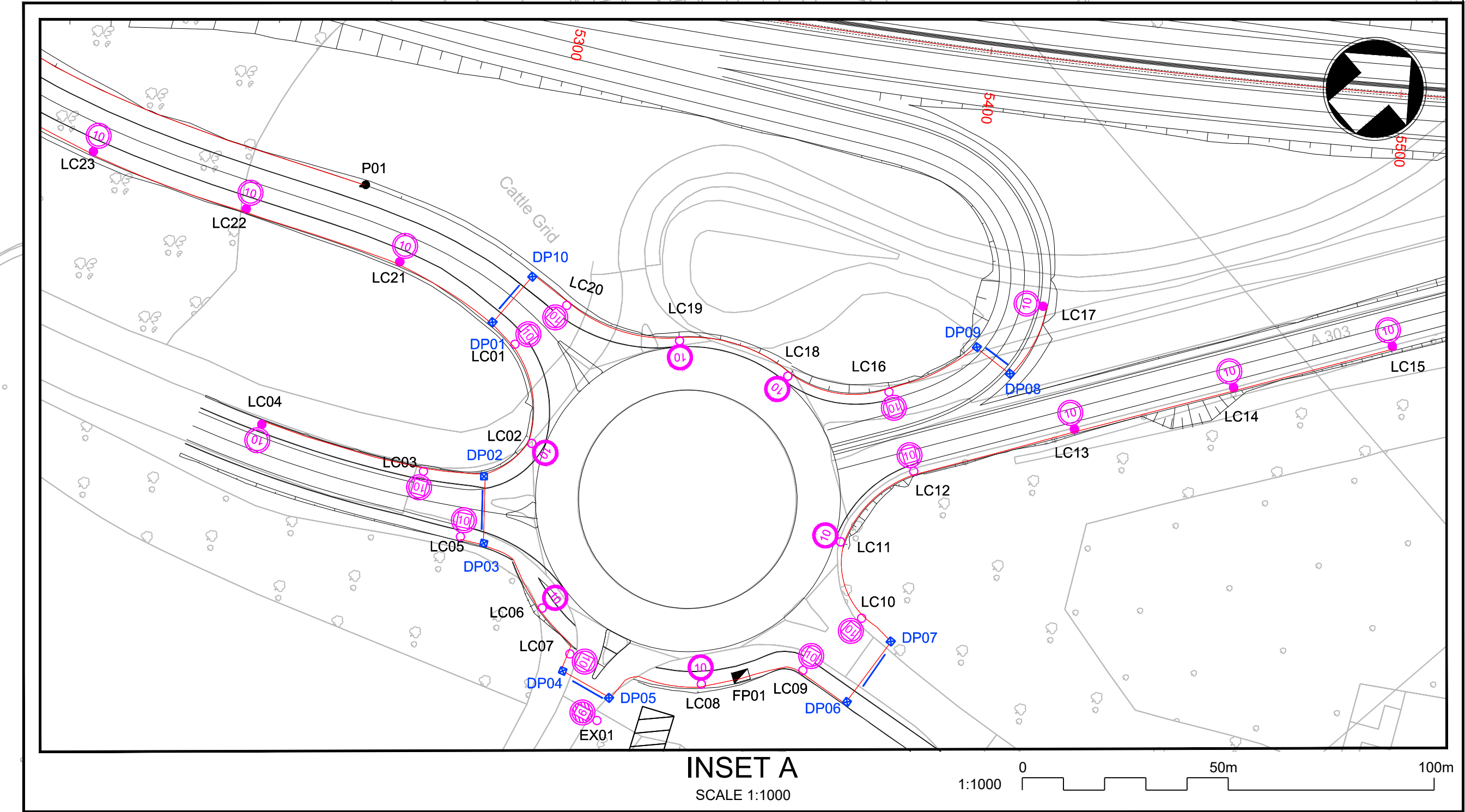


- HIGHWAY LIGHTING NOTES**
- DO NOT SCALE FROM THIS DRAWING.
 - THIS PRELIMINARY LIGHTING DESIGN IS BASED ON THE RECOMMENDATIONS PROVIDED IN BS 5489-1:2013 - CODE OF PRACTICE FOR THE DESIGN OF ROAD LIGHTING, PART 1: LIGHTING OF ROADS AND PUBLIC AMENITY AREAS AND BS EN13201:2015 ROAD LIGHTING, PART 2: PERFORMANCE REQUIREMENTS.
 - FOR CONFIRMATION OF LIGHTING CLASSES PLEASE REFER TO LIGHTING AND ELECTRICAL PRELIMINARY DESIGN RATIONALE DOCUMENT HE551507-MMSJV-HLG-000-RP-EO-00010.
 - ALL PROPOSED LANTERNS ARE SUPPLIED BY CU PHOSCO.
 - ALL PROPOSED LANTERNS ARE G6 LUMINOUS INTENSITY CLASS IN ACCORDANCE WITH DMRB TD 34/07, 2.9 TO LIMIT THE ENVIRONMENTAL IMPACT.
 - ALL PROPOSED LIGHTING COLUMN LOCATIONS ARE INDICATIVE AND SUBJECT TO CONFIRMATION AT THE DETAILED DESIGN STAGE.
 - PROPOSED FEEDER PILLAR LOCATIONS ARE INDICATIVE AND SUBJECT TO CONFIRMATION AT THE DETAILED DESIGN STAGE.
 - DUE TO UNKNOWN GROUND OBSTRUCTIONS, THE PROPOSED HDPE ELECTRICAL CABLE DUCT ROUTE IS SUBJECT TO CONFIRMATION ON SITE.
 - ALL PROPOSED STREETLIGHTING COLUMNS ARE PASSIVELY SAFE AS NO VRS IS AVAILABLE.
 - ALL LIGHTING COLUMNS ARE AT LEAST MINIMUM CLEARANCE FROM THE EDGE OF THE CARRIAGEWAY AS RECOMMENDED IN BS 5489-1:2013 4.3.3.3 TABLE 2.
- UNDERBRIDGE LIGHTING NOTES**
- AS INDICATED BY THE CLOUD, THE PROPOSED DESIGN FOR THE UNDERBRIDGE LIGHTING IS FOR ILLUSTRATIVE PURPOSES ONLY. FINAL EQUIPMENT QUANTITIES / WATTAGE, BASED ON THE UNDERBRIDGE LIGHTING REQUIREMENTS TO BE DETERMINED AT THE DETAILED DESIGN STAGE.
 - INDICATIVE POSITION OF LANTERN DRIVERS. HOWEVER SUBJECT TO DETAILED DESIGN.

- PROPOSED 10M LIGHTING COLUMN. POST TOP MOUNTED CU PHOSCO P850. LAMP FLUX: 17.06KLM. LUMINAIRE TILT: ZERO DEGREES FROM HORIZONTAL & LUMINOUS INTENSITY CLASS G6.
- PROPOSED 10M LIGHTING COLUMN. POST TOP MOUNTED CU PHOSCO P850. LAMP FLUX: 16.83KLM. LUMINAIRE TILT: ZERO DEGREES FROM HORIZONTAL & LUMINOUS INTENSITY CLASS G6.
- PROPOSED 10M LIGHTING COLUMN. POST TOP MOUNTED CU PHOSCO P850. LAMP FLUX: 25.29KLM. LUMINAIRE TILT: ZERO DEGREES FROM HORIZONTAL & LUMINOUS INTENSITY CLASS G6.
- INDICATIVE 100MM HDPE DUCT ROUTE
- INDICATIVE DUCT ROAD CROSSING (INCLUDING SPARE DUCT)
- INDICATIVE DRAW PIT LOCATION
- INDICATIVE FEEDER PILLAR LOCATIONS
- LOW WATTAGE LANTERN
- HIGH WATTAGE LANTERN
- PHOTOMETER MOUNTED ON 6M POLE (P01, P02)

THIS DOCUMENT IS ISSUED FOR THE PARTY WHICH COMMISSIONED IT AND FOR SPECIFIC PURPOSES CONNECTED WITH THE CAPTIONED PROJECT ONLY. IT SHOULD NOT BE RELIED UPON BY ANY OTHER PARTY OR USED FOR ANY OTHER PURPOSE. WE ACCEPT NO RESPONSIBILITY FOR THE CONSEQUENCES OF THIS DOCUMENT BEING RELIED UPON BY ANY OTHER PARTY, OR BEING USED FOR ANY OTHER PURPOSE, OR CONTAINING ANY ERROR OR OMISSION WHICH IS DUE TO AN ERROR OR OMISSION IN DATA SUPPLIED TO US BY OTHER PARTIES.



Project Title					
A303 SPARKFORD TO ILCHESTER DUALLING					
Drawing Title					
PROPOSED LIGHTING LAYOUT					
Drawing Status					Suitability
Published - DEFINITION					A3
Scale	Designed	Drawn	Checked	Approved	
AS SHOWN	KS	SB	AS	NE	
Original Size	Date	Date	Date	Date	
A1	03/05/18	20/07/18	20/07/18	20/07/18	
Drawing Number					Project Ref. No.
HE PIN					389107
HE551507 - MMSJV - HLG -					Revision
000 - DR - EO - 0010					C01
REV.	DATE	AMENDMENT DETAILS		ORIG	CHK'D
				APP'D	