

A428 Black Cat to Caxton Gibbet improvements

TR010044

Volume 2

2.10 Engineering Section Drawings – Part 1

Planning Act 2008

Regulations 5(2)(o), 5(2)(p), 6(2)(a) and 6(2)(b)

Infrastructure Planning (Applications: Prescribed Forms and
Procedure) Regulations 2009

26 February 2021

Infrastructure Planning

Planning Act 2008

**The Infrastructure Planning
(Applications: Prescribed Forms and
Procedure) Regulations 2009**

**A428 Black Cat to Caxton Gibbet
improvements**
Development Consent Order 202[]

Engineering Section Drawings – Part 1

Regulation Reference:	Regulation 5(2)(o), 5(2)(p), 6(2)(a) and 6(2)(b)
Planning Inspectorate Scheme Reference	TR010044
Application Document Reference	TR010044/APP/2.10
Author	A428 Black Cat to Caxton Gibbet improvements Project Team, Highways England

Version	Date	Status of Version
Rev 1	26 February 2021	DCO Application

Table of contents

Chapter	Pages
1	1
1.1	1
2	3
Appendix A	14

1 Introduction

1.1 General

1.1.1 Highways England (the Applicant) has submitted an application under Section 37 of the Planning Act 2008 (PA 2008) for an order to grant development consent for the A428 Black Cat to Caxton Gibbet improvements (the Scheme).

1.1.2 These Engineering Section Drawings (these Drawings) have been prepared to accompany the application for a Development Consent Order (DCO), made by the Applicant to the Secretary of State for Transport (SoS) via the Planning Inspectorate (the Inspectorate).

1.1.3 The Application is seeking powers to construct a new 10 mile (16km) dual 2-lane carriageway from Black Cat roundabout to Caxton Gibbet roundabout, to be known as the A421, and in addition approximately 1.8 miles (3km) of tie-in works. A detailed description of the Scheme can be found in **Chapter 2** of the Environmental Statement [TR01044/APP/6.1].

1.1.4 These Drawings comprise part of the suite of Application documentation and are included in the Application in compliance with Regulation 5(2)(o), 5(2)(p), 6(2)(a) and 6(2)(b) of the Infrastructure Planning (Applications: Prescribed Forms and Procedure) Regulations 2009 (the 2009 Regulations), which requires:

'5(2)(o) any other plans, drawings and sections necessary to describe the proposals for which development consent is sought, showing details of design, external appearance, and the preferred layout of buildings or structures, drainage, surface water management, means of vehicular and pedestrian access, any car parking to be provided, and means of landscaping'

'5(2)(p) any of the documents prescribed by Regulation 6 which are relevant to the particular project.'

'6(2) If the application is for highway related development or for the construction or alteration of a railway, it must be accompanied by section drawings to suitable horizontal and vertical scales which show, by reference to Ordnance Survey or Chart datum-

(a) the levels of the proposed works, including in particular and where relevant

(i) ground levels;

(ii) the height of every proposed bridge, viaduct, aqueduct, embankment, and elevated guideway;

(iii) the depth of every proposed cutting and tunnel;

(iv) the levels of the bed of any tidal waters or inland waterway in which it is proposed that any works should be situated;

(v) the height of every structure or device (including a cable, but not catenary and related equipment) intended to be erected above, on or below the surface of, or on or beneath the bed of tidal waters or an inland waterway; and

(vi) drainage outfall details for highways;

(b) a cross section of every intended tunnel and any altered gradient of a carriageway or a way forming part of a guided transport system on either side of every level crossing, bridge, tunnel or underpass which would carry the carriageway or way or through which it would pass.'

- 1.1.5 These Drawings are also being submitted under Regulation 5(4) of the 2009 Regulations which states:

"Where a plan comprises three or more separate sheets a key plan must be provided showing the relationship between the different sheets."

- 1.1.6 As these Drawings are part of the Application documentation, they should be read alongside and are informed by the other Application documents. In particular, these Plans should be read alongside Schedule 1 of the draft DCO [TR010044/APP/3.1], the Works Plans [TR010044/APP/2.3] and the General Arrangement Plans [TR010044/APP/2.4].

- 1.1.7 The Works Plans illustrate the location of the new highway centrelines used in the section drawings.

- 1.1.8 The section drawings are provided in compliance with Regulation 6(2) as stated above. Each feature required by Regulation 6(2) to be shown on the section drawings is identified by reference to the centreline of the highway (where the feature is situated on, over or under the highway); other features (such as borrow pits and flood compensation areas) are identified by reference to the cross-sections as shown on the Works Plans. The location of features (shown in the Engineering Section drawings) is identified by cross-reference to the Works Plans.

- 1.1.9 The works associated with the de-trunking of the existing A428 do not involve any change in vertical or horizontal alignment. The designs are therefore based on existing levels, and as such, sections of these works would be ineffective in demonstrating any level variation and therefore have not been provided.

2 Schedule of plans included in this application document

Drawing Number	Drawing Title	Revision
Part 1		
HE551495-ACM-LSI-ZN1_SW_Z_ZZ-DR-DC-3054	Drainage Engineering Plan Regulation 5(2)(o) & 6(2) Key Plan	P01
HE551495-ACM-LSI-ZN1_SW_Z_ZZ-DR-DC-0501	Drainage Engineering Plan Regulation 5(2)(o) & 6(2) Sheet 1 of 16	P04
HE551495-ACM-LSI-ZN1_SW_Z_ZZ-DR-DC-0502	Drainage Engineering Plan Regulation 5(2)(o) & 6(2) Sheet 2 of 16	P04
HE551495-ACM-LSI-ZN2_SW_Z_ZZ-DR-DC-0503	Drainage Engineering Plan Regulation 5(2)(o) & 6(2) Sheet 3 of 16	P04
HE551495-ACM-LSI-ZN2_SW_Z_ZZ-DR-DC-0504	Drainage Engineering Plan Regulation 5(2)(o) & 6(2) Sheet 4 of 16	P04
HE551495-ACM-LSI-ZN2_SW_Z_ZZ-DR-DC-0505	Drainage Engineering Plan Regulation 5(2)(o) & 6(2) Sheet 5 of 16	P04
HE551495-ACM-LSI-ZN3_SW_Z_ZZ-DR-DC-0506	Drainage Engineering Plan Regulation 5(2)(o) & 6(2) Sheet 6 of 16	P04
HE551495-ACM-LSI-ZN3_SW_Z_ZZ-DR-DC-0507	Drainage Engineering Plan Regulation 5(2)(o) & 6(2) Sheet 7 of 16	P04
HE551495-ACM-LSI-ZN3_SW_Z_ZZ-DR-DC-0508	Drainage Engineering Plan Regulation 5(2)(o) & 6(2) Sheet 8 of 16	P04
HE551495-ACM-LSI-ZN4_SW_Z_ZZ-DR-DC-0509	Drainage Engineering Plan Regulation 5(2)(o) & 6(2) Sheet 9 of 16	P04
HE551495-ACM-LSI-ZN4_SW_Z_ZZ-DR-DC-0510	Drainage Engineering Plan Regulation 5(2)(o) & 6(2) Sheet 10 of 16	P04

Drawing Number	Drawing Title	Revision
HE551495-ACM-LSI-ZN4_SW_Z_ZZ-DR-DC-0511	Drainage Engineering Plan Regulation 5(2)(o) & 6(2) Sheet 11 of 16	P04
HE551495-ACM-LSI-ZN5_SW_Z_ZZ-DR-DC-0512	Drainage Engineering Plan Regulation 5(2)(o) & 6(2) Sheet 12 of 16	P04
HE551495-ACM-LSI-ZN5_SW_Z_ZZ-DR-DC-0513	Drainage Engineering Plan Regulation 5(2)(o) & 6(2) Sheet 13 of 16	P04
HE551495-ACM-LSI-ZN1_SW_Z_ZZ-DR-DC-0514	Drainage Engineering Plan Regulation 5(2)(o) & 6(2) Sheet 14 of 16	P04
HE551495-ACM-LSI-ZN2_SW_Z_ZZ-DR-DC-0515	Drainage Engineering Plan Regulation 5(2)(o) & 6(2) Sheet 15 of 16	P04
HE551495-ACM-LSI-ZN5_SW_Z_ZZ-DR-DC-0516	Drainage Engineering Plan Regulation 5(2)(o) & 6(2) Sheet 16 of 16	P04
Part 2		
HE551495-ACM-LSI-GEN_SW_Z_ZZ-DR-DC-2460	Engineering Sections (Cross Sections) Regulations 5(2)(o) & 6(2) Key Plan	P04
HE551495-ACM-LSI-ZN1_SW_Z_ZZ-DR-DC-2461	Engineering Sections (Cross Sections) Regulations 5(2)(o) & 6(2) Sheet 1	P04
HE551495-ACM-LSI-ZN1_SW_Z_ZZ-DR-DC-2462	Engineering Sections (Cross Sections) Regulations 5(2)(o) & 6(2) Sheet 2	P04
HE551495-ACM-LSI-ZN1_SW_Z_ZZ-DR-DC-2463	Engineering Sections (Cross Sections) Regulations 5(2)(o) & 6(2) Sheet 3	P04
HE551495-ACM-LSI-ZN1_SW_Z_ZZ-DR-DC-2464	Engineering Sections (Cross Sections) Regulations 5(2)(o) & 6(2) Sheet 4	P04
HE551495-ACM-LSI-ZN1_SW_Z_ZZ-DR-DC-2465	Engineering Sections (Cross Sections) Regulations 5(2)(o) & 6(2) Sheet 5	P04

Drawing Number	Drawing Title	Revision
HE551495-ACM-LSI-ZN1_SW_Z_ZZ-DR-DC-2466	Engineering Sections (Cross Sections) Regulations 5(2)(o) & 6(2) Sheet 6	P04
HE551495-ACM-LSI-ZN1_SW_Z_ZZ-DR-DC-2467	Engineering Sections (Cross Sections) Regulations 5(2)(o) & 6(2) Sheet 7	P04
HE551495-ACM-LSI-ZN1_SW_Z_ZZ-DR-DC-2468	Engineering Sections (Cross Sections) Regulations 5(2)(o) & 6(2) Sheet 8	P04
HE551495-ACM-LSI-ZN1_SW_Z_ZZ-DR-DC-2469	Engineering Sections (Cross Sections) Regulations 5(2)(o) & 6(2) Sheet 9	P04
HE551495-ACM-LSI-ZN1_SW_Z_ZZ-DR-DC-2470	Engineering Sections (Cross Sections) Regulations 5(2)(o) & 6(2) Sheet 10	P04
HE551495-ACM-LSI-ZN2_SW_Z_ZZ-DR-DC-2471	Engineering Sections (Cross Sections) Regulations 5(2)(o) & 6(2) Sheet 11	P04
HE551495-ACM-LSI-ZN2_SW_Z_ZZ-DR-DC-2472	Engineering Sections (Cross Sections) Regulations 5(2)(o) & 6(2) Sheet 12	P04
HE551495-ACM-LSI-ZN2_SW_Z_ZZ-DR-DC-2473	Engineering Sections (Cross Sections) Regulations 5(2)(o) & 6(2) Sheet 13	P04
HE551495-ACM-LSI-ZN2_SW_Z_ZZ-DR-DC-2474	Engineering Sections (Cross Sections) Regulations 5(2)(o) & 6(2) Sheet 14	P04
HE551495-ACM-LSI-ZN2_SW_Z_ZZ-DR-DC-2475	Engineering Sections (Cross Sections) Regulations 5(2)(o) & 6(2) Sheet 15	P04
HE551495-ACM-LSI-ZN3_SW_Z_ZZ-DR-DC-2476	Engineering Sections (Cross Sections) Regulations 5(2)(o) & 6(2) Sheet 16	P04
HE551495-ACM-LSI-ZN3_SW_Z_ZZ-DR-DC-2477	Engineering Sections (Cross Sections) Regulations 5(2)(o) & 6(2) Sheet 17	P04

Drawing Number	Drawing Title	Revision
HE551495-ACM-LSI-ZN3_SW_Z_ZZ-DR-DC-2478	Engineering Sections (Cross Sections) Regulations 5(2)(o) & 6(2) Sheet 18	P04
HE551495-ACM-LSI-ZN3_SW_Z_ZZ-DR-DC-2479	Engineering Sections (Cross Sections) Regulations 5(2)(o) & 6(2) Sheet 19	P04
HE551495-ACM-LSI-ZN3_SW_Z_ZZ-DR-DC-2480	Engineering Sections (Cross Sections) Regulations 5(2)(o) & 6(2) Sheet 20	P04
HE551495-ACM-LSI-ZN4_SW_Z_ZZ-DR-DC-2481	Engineering Sections (Cross Sections) Regulations 5(2)(o) & 6(2) Sheet 21	P04
HE551495-ACM-LSI-ZN4_SW_Z_ZZ-DR-DC-2482	Engineering Sections (Cross Sections) Regulations 5(2)(o) & 6(2) Sheet 22	P04
HE551495-ACM-LSI-ZN1_SW_Z_ZZ-DR-DC-2483	Engineering Sections (Cross Sections) Regulations 5(2)(o) & 6(2) Sheet 23	P04
HE551495-ACM-LSI-ZN1_SW_Z_ZZ-DR-DC-2484	Engineering Sections (Cross Sections) Regulations 5(2)(o) & 6(2) Sheet 24	P04
HE551495-ACM-LSI-ZN1_SW_Z_ZZ-DR-DC-2485	Engineering Sections (Cross Sections) Regulations 5(2)(o) & 6(2) Sheet 25	P04
<u>Part 3</u>		
HE551495-ACM-LSI-ZN5_SW_Z_ZZ-DR-DC-3501	Structure Engineering Drawings and Sections Regulation 5(2)(o) Sheet 1	P04
HE551495-ACM-LSI-ZN5_SW_Z_ZZ-DR-DC-3502	Structure Engineering Drawings and Sections Regulation 5(2)(o) Sheet 2	P04
HE551495-ACM-LSI-ZN5_SW_Z_ZZ-DR-DC-3503	Structure Engineering Drawings and Sections Regulation 5(2)(o) Sheet 3	P04
HE551495-ACM-LSI-ZN5_SW_Z_ZZ-DR-DC-3504	Structure Engineering Drawings and Sections Regulation 5(2)(o) Sheet 4	P04

Drawing Number	Drawing Title	Revision
HE551495-ACM-LSI-ZN5_SW_Z_ZZ-DR-DC-3505	Structure Engineering Drawings and Sections Regulation 5(2)(o) Sheet 5	P04
HE551495-ACM-LSI-ZN5_SW_Z_ZZ-DR-DC-3506	Structure Engineering Drawings and Sections Regulation 5(2)(o) Sheet 6	P04
HE551495-ACM-LSI-ZN5_SW_Z_ZZ-DR-DC-3507	Structure Engineering Drawings and Sections Regulation 5(2)(o) Sheet 7	P04
HE551495-ACM-LSI-ZN5_SW_Z_ZZ-DR-DC-3508	Structure Engineering Drawings and Sections Regulation 5(2)(o) Sheet 8	P04
HE551495-ACM-LSI-ZN5_SW_Z_ZZ-DR-DC-3509	Structure Engineering Drawings and Sections Regulation 5(2)(o) Sheet 9	P04
HE551495-ACM-LSI-ZN5_SW_Z_ZZ-DR-DC-3510	Structure Engineering Drawings and Sections Regulation 5(2)(o) Sheet 10	P04
HE551495-ACM-LSI-ZN5_SW_Z_ZZ-DR-DC-3511	Structure Engineering Drawings and Sections Regulation 5(2)(o) Sheet 11	P04
HE551495-ACM-LSI-ZN5_SW_Z_ZZ-DR-DC-3512	Structure Engineering Drawings and Sections Regulation 5(2)(o) Sheet 12	P04
HE551495-ACM-LSI-ZN5_SW_Z_ZZ-DR-DC-3513	Structure Engineering Drawings and Sections Regulation 5(2)(o) Sheet 13	P04
HE551495-ACM-LSI-ZN5_SW_Z_ZZ-DR-DC-3514	Structure Engineering Drawings and Sections Regulation 5(2)(o) Sheet 14	P05
HE551495-ACM-LSI-ZN5_SW_Z_ZZ-DR-DC-3515	Structure Engineering Drawings and Sections Regulation 5(2)(o) Sheet 15	P04
HE551495-ACM-LSI-ZN5_SW_Z_ZZ-DR-DC-3516	Structure Engineering Drawings and Sections Regulation 5(2)(o) Sheet 16	P04

Drawing Number	Drawing Title	Revision
HE551495-ACM-LSI-ZN5_SW_Z_ZZ-DR-DC-3517	Structure Engineering Drawings and Sections Regulation 5(2)(o) Sheet 17	P04
HE551495-ACM-LSI-ZN5_SW_Z_ZZ-DR-DC-3518	Structure Engineering Drawings and Sections Regulation 5(2)(o) Sheet 18	P05
HE551495-ACM-LSI-ZN5_SW_Z_ZZ-DR-DC-3519	Structure Engineering Drawings and Sections Regulation 5(2)(o) Sheet 19	P04
HE551495-ACM-LSI-ZN5_SW_Z_ZZ-DR-DC-3523	Structure Engineering Drawings and Sections Regulation 5(2)(o) Sheet 20	P04
HE551495-ACM-LSI-ZN5_SW_Z_ZZ-DR-DC-3529	Structure Engineering Drawings and Sections Regulation 5(2)(o) Sheet 21	P01
Part 4		
HE551495-ACM-LSI-ZN1_SW_Z_ZZ-DR-DC-2401	Engineering Sections (Plan and Profiles) Regulation 5(2)(o) & 6(2) Sheet 1	P05
HE551495-ACM-LSI-ZN1_SW_Z_ZZ-DR-DC-2402	Engineering Sections (Plan and Profiles) Regulation 5(2)(o) & 6(2) Sheet 2	P05
HE551495-ACM-LSI-ZN2_SW_Z_ZZ-DR-DC-2403	Engineering Sections (Plan and Profiles) Regulation 5(2)(o) & 6(2) Sheet 3	P05
HE551495-ACM-LSI-ZN2_SW_Z_ZZ-DR-DC-2404	Engineering Sections (Plan and Profiles) Regulation 5(2)(o) & 6(2) Sheet 4	P05
HE551495-ACM-LSI-ZN2_SW_Z_ZZ-DR-DC-2405	Engineering Sections (Plan and Profiles) Regulation 5(2)(o) & 6(2) Sheet 5	P05
HE551495-ACM-LSI-ZN3_SW_Z_ZZ-DR-DC-2406	Engineering Sections (Plan and Profiles) Regulation 5(2)(o) & 6(2) Sheet 6	P05
HE551495-ACM-LSI-ZN3_SW_Z_ZZ-DR-DC-2407	Engineering Sections (Plan and Profiles) Regulation 5(2)(o) & 6(2) Sheet 7	P05

Drawing Number	Drawing Title	Revision
HE551495-ACM-LSI-ZN4_SW_Z_ZZ-DR-DC-2408	Engineering Sections (Plan and Profiles) Regulation 5(2)(o) & 6(2) Sheet 8	P05
HE551495-ACM-LSI-ZN4_SW_Z_ZZ-DR-DC-2409	Engineering Sections (Plan and Profiles) Regulation 5(2)(o) & 6(2) Sheet 9	P05
HE551495-ACM-LSI-ZN4_SW_Z_ZZ-DR-DC-2410	Engineering Sections (Plan and Profiles) Regulation 5(2)(o) & 6(2) Sheet 10	P05
HE551495-ACM-LSI-ZN5_SW_Z_ZZ-DR-DC-2411	Engineering Sections (Plan and Profiles) Regulation 5(2)(o) & 6(2) Sheet 11	P05
HE551495-ACM-LSI-ZN5_SW_Z_ZZ-DR-DC-2412	Engineering Sections (Plan and Profiles) Regulation 5(2)(o) & 6(2) Sheet 12	P05
Part 5		
HE551495-ACM-LSI-ZN1_SW_Z_ZZ-DR-DC-2413	Engineering Sections (Plan and Profiles) Regulation 5(2)(o) & 6(2) Sheet 13	P04
HE551495-ACM-LSI-ZN1_SW_Z_ZZ-DR-DC-2414	Engineering Sections (Plan and Profiles) Regulation 5(2)(o) & 6(2) Sheet 14	P04
HE551495-ACM-LSI-ZN1_SW_Z_ZZ-DR-DC-2415	Engineering Sections (Plan and Profiles) Regulation 5(2)(o) & 6(2) Sheet 15	P04
HE551495-ACM-LSI-ZN1_SW_Z_ZZ-DR-DC-2416	Engineering Sections (Plan and Profiles) Regulation 5(2)(o) & 6(2) Sheet 16	P04
HE551495-ACM-LSI-ZN1_SW_Z_ZZ-DR-DC-2417	Engineering Sections (Plan and Profiles) Regulation 5(2)(o) & 6(2) Sheet 17	P04
HE551495-ACM-LSI-ZN1_SW_Z_ZZ-DR-DC-2418	Engineering Sections (Plan and Profiles) Regulation 5(2)(o) & 6(2) Sheet 18	P04
HE551495-ACM-LSI-ZN1_SW_Z_ZZ-DR-DC-2419	Engineering Sections (Plan and Profiles) Regulation 5(2)(o) & 6(2) Sheet 19	P04

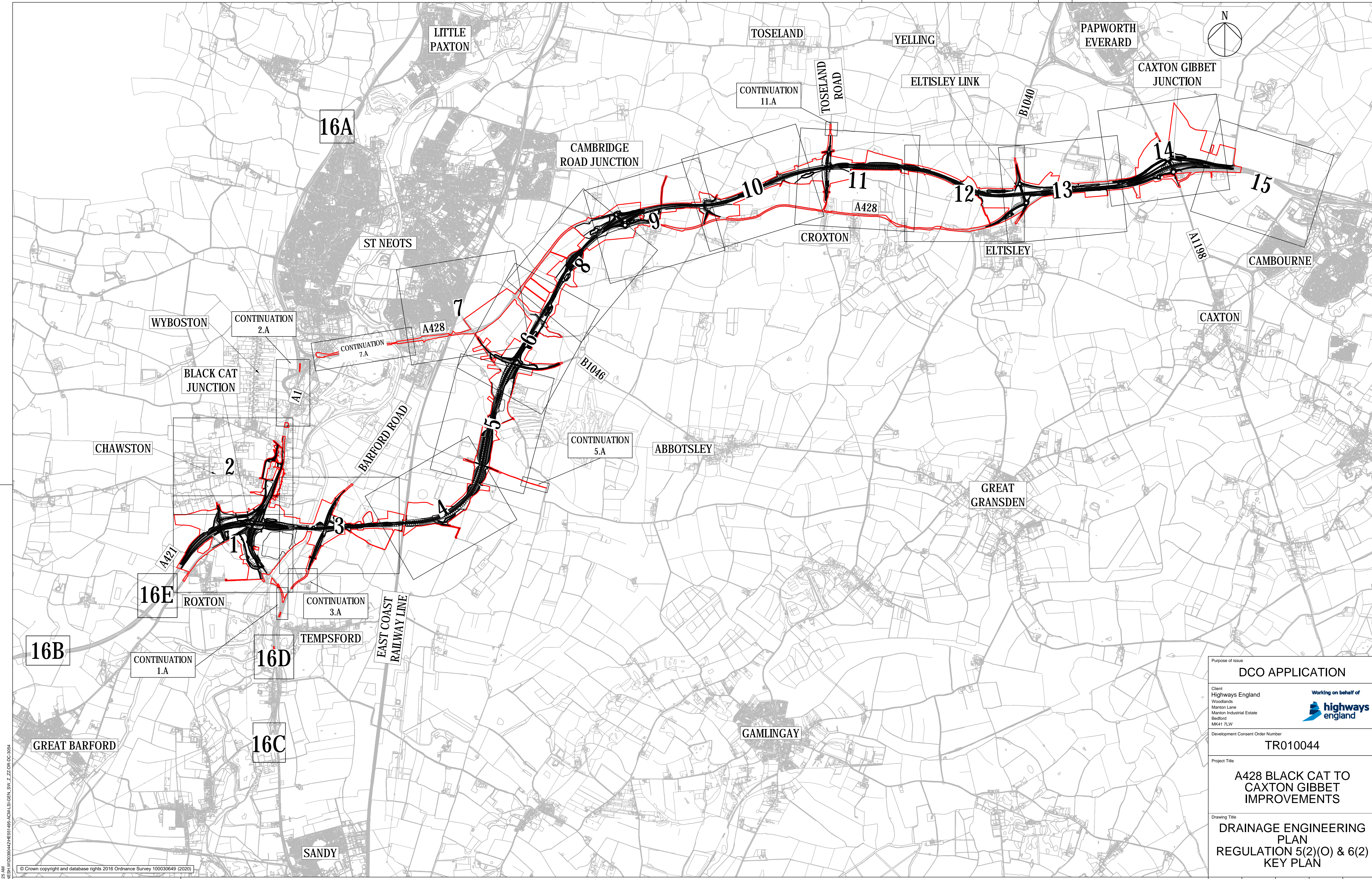
Drawing Number	Drawing Title	Revision
HE551495-ACM-LSI-ZN1_SW_Z_ZZ-DR-DC-2420	Engineering Sections (Plan and Profiles) Regulation 5(2)(o) & 6(2) Sheet 20	P04
HE551495-ACM-LSI-ZN1_SW_Z_ZZ-DR-DC-2421	Engineering Sections (Plan and Profiles) Regulation 5(2)(o) & 6(2) Sheet 21	P04
HE551495-ACM-LSI-ZN1_SW_Z_ZZ-DR-DC-2422	Engineering Sections (Plan and Profiles) Regulation 5(2)(o) & 6(2) Sheet 22	P04
HE551495-ACM-LSI-ZN1_SW_Z_ZZ-DR-DC-2423	Engineering Sections (Plan and Profiles) Regulation 5(2)(o) & 6(2) Sheet 23	P04
HE551495-ACM-LSI-ZN1_SW_Z_ZZ-DR-DC-2424	Engineering Sections (Plan and Profiles) Regulation 5(2)(o) & 6(2) Sheet 24	P04
HE551495-ACM-LSI-ZN1_SW_Z_ZZ-DR-DC-2425	Engineering Sections (Plan and Profiles) Regulation 5(2)(o) & 6(2) Sheet 25	P04
HE551495-ACM-LSI-ZN1_SW_Z_ZZ-DR-DC-2426	Engineering Sections (Plan and Profiles) Regulation 5(2)(o) & 6(2) Sheet 26	P04
HE551495-ACM-LSI-ZN1_SW_Z_ZZ-DR-DC-2427	Engineering Sections (Plan and Profiles) Regulation 5(2)(o) & 6(2) Sheet 27	P04
HE551495-ACM-LSI-ZN1_SW_Z_ZZ-DR-DC-2428	Engineering Sections (Plan and Profiles) Regulation 5(2)(o) & 6(2) Sheet 28	P04
HE551495-ACM-LSI-ZN2_SW_Z_ZZ-DR-DC-2429	Engineering Sections (Plan and Profiles) Regulation 5(2)(o) & 6(2) Sheet 29	P04
HE551495-ACM-LSI-ZN2_SW_Z_ZZ-DR-DC-2430	Engineering Sections (Plan and Profiles) Regulation 5(2)(o) & 6(2) Sheet 30	P04
HE551495-ACM-LSI-ZN2_SW_Z_ZZ-DR-DC-2431	Engineering Sections (Plan and Profiles) Regulation 5(2)(o) & 6(2) Sheet 31	P04

Drawing Number	Drawing Title	Revision
HE551495-ACM-LSI-ZN2_SW_Z_ZZ-DR-DC-2432	Engineering Sections (Plan and Profiles) Regulation 5(2)(o) & 6(2) Sheet 32	P04
HE551495-ACM-LSI-ZN2_SW_Z_ZZ-DR-DC-2433	Engineering Sections (Plan and Profiles) Regulation 5(2)(o) & 6(2) Sheet 33	P04
HE551495-ACM-LSI-ZN2_SW_Z_ZZ-DR-DC-2434	Engineering Sections (Plan and Profiles) Regulation 5(2)(o) & 6(2) Sheet 34	P04
Part 6		
HE551495-ACM-LSI-ZN2_SW_Z_ZZ-DR-DC-2435	Engineering Sections (Plan and Profiles) Regulation 5(2)(o) & 6(2) Sheet 35	P04
HE551495-ACM-LSI-ZN3_SW_Z_ZZ-DR-DC-2436	Engineering Sections (Plan and Profiles) Regulation 5(2)(o) & 6(2) Sheet 36	P04
HE551495-ACM-LSI-ZN3_SW_Z_ZZ-DR-DC-2437	Engineering Sections (Plan and Profiles) Regulation 5(2)(o) & 6(2) Sheet 37	P04
HE551495-ACM-LSI-ZN3_SW_Z_ZZ-DR-DC-2438	Engineering Sections (Plan and Profiles) Regulation 5(2)(o) & 6(2) Sheet 38	P04
HE551495-ACM-LSI-ZN3_SW_Z_ZZ-DR-DC-2439	Engineering Sections (Plan and Profiles) Regulation 5(2)(o) & 6(2) Sheet 39	P04
HE551495-ACM-LSI-ZN3_SW_Z_ZZ-DR-DC-2440	Engineering Sections (Plan and Profiles) Regulation 5(2)(o) & 6(2) Sheet 40	P04
HE551495-ACM-LSI-ZN3_SW_Z_ZZ-DR-DC-2441	Engineering Sections (Plan and Profiles) Regulation 5(2)(o) & 6(2) Sheet 41	P04
HE551495-ACM-LSI-ZN3_SW_Z_ZZ-DR-DC-2442	Engineering Sections (Plan and Profiles) Regulation 5(2)(o) & 6(2) Sheet 42	P04
HE551495-ACM-LSI-ZN4_SW_Z_ZZ-DR-DC-2443	Engineering Sections (Plan and Profiles) Regulation 5(2)(o) & 6(2) Sheet 43	P04

Drawing Number	Drawing Title	Revision
HE551495-ACM-LSI-ZN4_SW_Z_ZZ-DR-DC-2444	Engineering Sections (Plan and Profiles) Regulation 5(2)(o) & 6(2) Sheet 44	P04
HE551495-ACM-LSI-ZN4_SW_Z_ZZ-DR-DC-2445	Engineering Sections (Plan and Profiles) Regulation 5(2)(o) & 6(2) Sheet 45	P04
HE551495-ACM-LSI-ZN4_SW_Z_ZZ-DR-DC-2446	Engineering Sections (Plan and Profiles) Regulation 5(2)(o) & 6(2) Sheet 46	P04
HE551495-ACM-LSI-ZN4_SW_Z_ZZ-DR-DC-2447	Engineering Sections (Plan and Profiles) Regulation 5(2)(o) & 6(2) Sheet 47	P04
HE551495-ACM-LSI-ZN4_SW_Z_ZZ-DR-DC-2448	Engineering Sections (Plan and Profiles) Regulation 5(2)(o) & 6(2) Sheet 48	P04
HE551495-ACM-LSI-ZN4_SW_Z_ZZ-DR-DC-2449	Engineering Sections (Plan and Profiles) Regulation 5(2)(o) & 6(2) Sheet 49	P04
HE551495-ACM-LSI-ZN5_SW_Z_ZZ-DR-DC-2450	Engineering Sections (Plan and Profiles) Regulation 5(2)(o) & 6(2) Sheet 50	P04
HE551495-ACM-LSI-ZN5_SW_Z_ZZ-DR-DC-2451	Engineering Sections (Plan and Profiles) Regulation 5(2)(o) & 6(2) Sheet 51	P04
HE551495-ACM-LSI-ZN5_SW_Z_ZZ-DR-DC-2452	Engineering Sections (Plan and Profiles) Regulation 5(2)(o) & 6(2) Sheet 52	P04
HE551495-ACM-LSI-ZN5_SW_Z_ZZ-DR-DC-2453	Engineering Sections (Plan and Profiles) Regulation 5(2)(o) & 6(2) Sheet 53	P04
HE551495-ACM-LSI-ZN5_SW_Z_ZZ-DR-DC-2454	Engineering Sections (Plan and Profiles) Regulation 5(2)(o) & 6(2) Sheet 54	P04
HE551495-ACM-LSI-ZN5_SW_Z_ZZ-DR-DC-2455	Engineering Sections (Plan and Profiles) Regulation 5(2)(o) & 6(2) Sheet 55	P04

Drawing Number	Drawing Title	Revision
HE551495-ACM-LSI-ZN5_SW_Z_ZZ-DR-DC-2456	Engineering Sections (Plan and Profiles) Regulation 5(2)(o) & 6(2) Sheet 56	P04
HE551495-ACM-LSI-ZN5_SW_Z_ZZ-DR-DC-2457	Engineering Sections (Plan and Profiles) Regulation 5(2)(o) & 6(2) Sheet 57	P03

Appendix A Engineering section drawings



Proj Data: Thursday, February 11, 2021 11:27:25 AM
File Name: C:\p1\work\16030649\DCO\LSI\GEN\SW_Z_ZZ.DR.DC-3054

© Crown copyright and database rights 2016 Ordnance Survey 100030649 (2020)				
NOTES				
1. ALL DIMENSIONS ARE IN METRES UNLESS DEFINED OTHERWISE.				
2. THIS PLAN SHOULD BE READ IN CONJUNCTION WITH OTHER PLAN APPLICATION DOCUMENTS IN PARTICULAR SCHEDULE 3 OF THE DEVELOPMENT CONSENT ORDER.				
KEY				
— DEVELOPMENT CONSENT ORDER (DCO) BOUNDARY				
Revision Details				
Final for DCO Application	JB	03/02/21	P01	
By	TD	Date	Suffix	
Check				

Purpose of Issue
DCO APPLICATION

Client
Highways England
Woodlands
Manton Lane
Manton Industrial Estate
Bedford
MK41 7LW

Working on behalf of
**highways
england**

Development Consent Order Number
TR010044

Project Title
**A428 BLACK CAT TO
CAXTON GIBBET
IMPROVEMENTS**

Drawing Title
**DRAINAGE ENGINEERING
PLAN
REGULATION 5(2)(O) & 6(2)
KEY PLAN**

Designed
JJP

Drawn
JB

Checked
JMW

Approved
TD

Date
03/02/21

Internal Project No.
60541541

Suitability
D7

Scale @ A1

Zone
ZN1

Drawing Number
Highways England PIN
HE551495

I Originator
-ACM

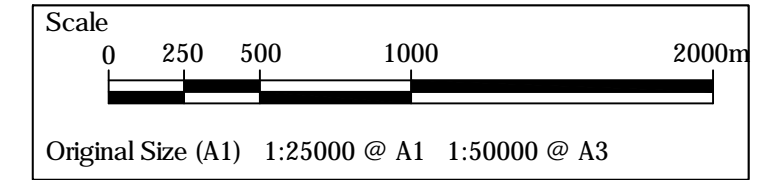
I Volume
-LSI -

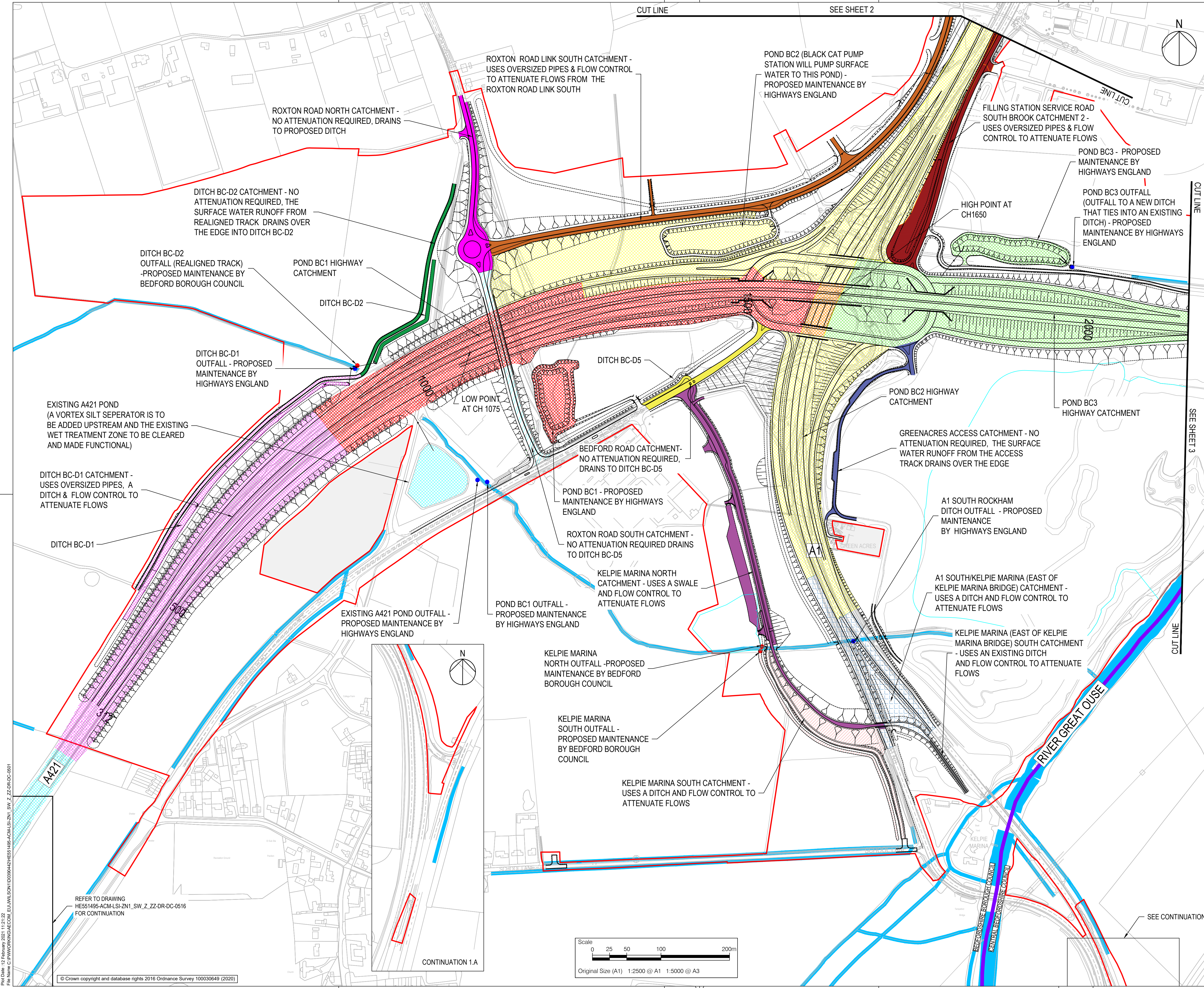
Location
ZN1_SW_Z_ZZ

I Type
-DR-DC-3054

I Role
1 Number

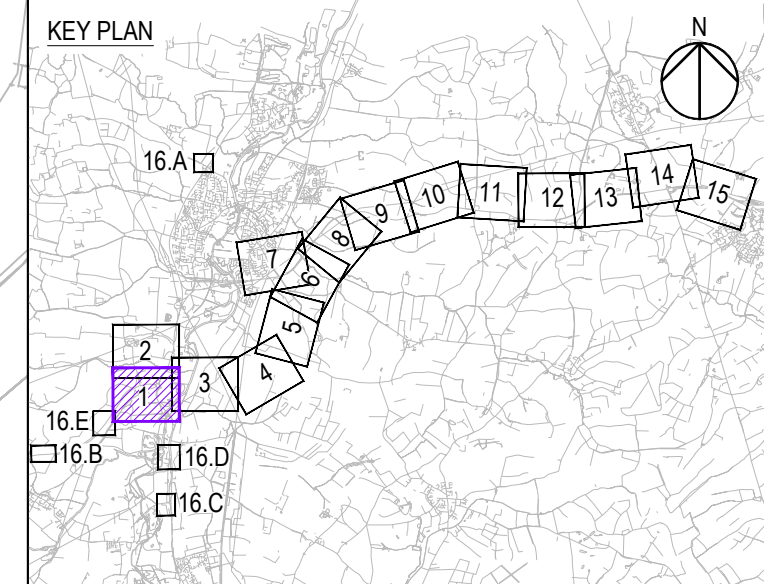
Rev
P01





- NOTES
1. ALL DIMENSIONS ARE IN METRES UNLESS STATED OTHERWISE.
 2. DO NOT SCALE FROM THIS DRAWING. USE ONLY PRINTED DIMENSIONS.
 3. THE PROPOSED WORKS SHOWN ARE ILLUSTRATIVE ONLY AND WILL BE SUBJECT TO CHANGE AS PART OF DETAILED DESIGN DEVELOPMENT. ANY CHANGES WILL BE LIMITED TO BEING WITHIN THE ORDER LIMITS AND ANY OTHER CONSTRAINTS INCLUDED IN THE DEVELOPMENT CONSENT ORDER.
 4. ALL SOLID FILL HATCHES SHOW HIGHWAY CATCHMENTS INCLUDING CARRIAGEWAYS, VERGES AND CUTTINGS.
 5. THE NAMING OF THE CATCHMENT AREAS ARE TO DIFFERENTIATE BETWEEN THEM AND ARE THE PURPOSE OF THE DRAINAGE ENGINEERING PLANS ONLY.
 6. THESE DRAINAGE PLANS SHOULD BE READ IN CONJUNCTION WITH ALL OTHER PLANS AND DOCUMENTATION, IN PARTICULAR THE ROAD DRAINAGE STRATEGY REPORT [TR010044/APP13.3]

- LEGEND
- ORDER LIMITS
 - LAND SURROUNDED BY, BUT NOT INCLUDED WITHIN THE ORDER LIMITS
 - LOCAL AUTHORITY BOUNDARY
 - EXISTING WATERCOURSE
 - OUTFALL MAINTAINED BY HIGHWAYS ENGLAND
 - OUTFALL MAINTAINED BY LOCAL HIGHWAY AUTHORITY
 - EXISTING A421 POND HIGHWAY CATCHMENT
 - POND BC1 HIGHWAY CATCHMENT
 - POND BC2 HIGHWAY CATCHMENT
 - POND BC3 HIGHWAY CATCHMENT
 - PROPOSED BC-D1 CATCHMENT
 - PROPOSED BC-D2 CATCHMENT
 - FILLING STATION SERVICE ROAD SOUTH BROOK CATCHMENT 2
 - ROXTON ROAD LINK SOUTH CATCHMENT
 - ROXTON ROAD NORTH CATCHMENT
 - ROXTON ROAD SOUTH CATCHMENT
 - BEDFORD ROAD CATCHMENT
 - KELPIE MARINA NORTH CATCHMENT
 - KELPIE MARINA SOUTH CATCHMENT
 - A1 SOUTH/KELPIE MARINA CATCHMENT
 - KELPIE MARINA (EAST OF KELPIE MARINA BRIDGE) SOUTH CATCHMENT
 - GREENACRES ACCESS CATCHMENT



Final for DCO Application	JB	TD	03/02/21	P04
Revision Details	By	Check	Date	Suffix

DCO APPLICATION

Client
Highways England
Woodlands
Manton Lane
Manton Industrial Estate
Bedford
MK41 7LW

Working on behalf of
highways england

Development Consent Order Number
TR010044

Project Title
A428 BLACK CAT TO CAXTON GIBBET IMPROVEMENTS

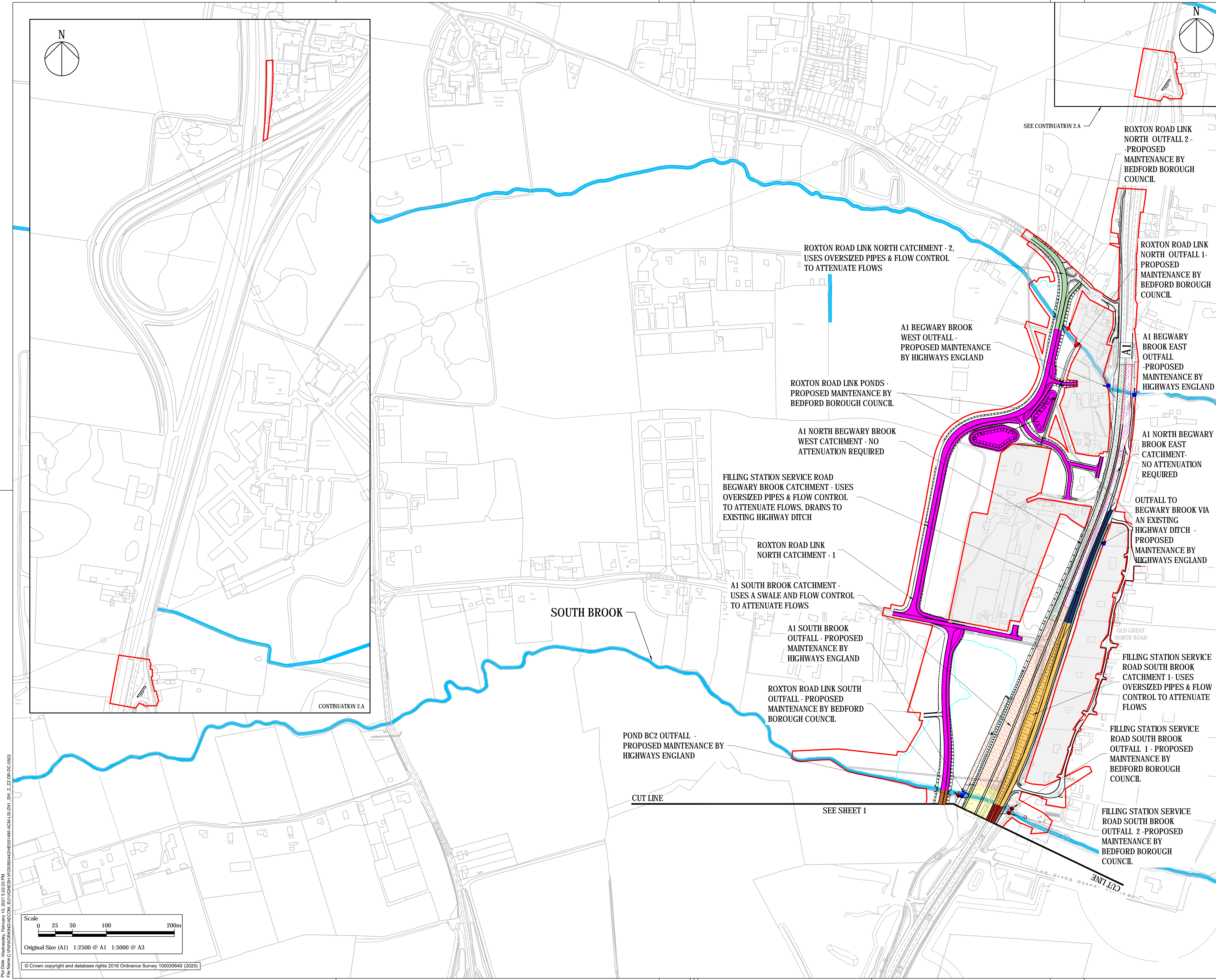
Drawing Title
**DRAINAGE ENGINEERING PLAN
REGULATION 5(2)(O) & 6(2)
SHEET 1**

Designed JJP	Drawn JB	Checked JMW	Approved TD	Date 03/02/21
Internal Project No. 60541541		Suitability D7		
Scale @ A1 1:2500		Zone ZN1		

THIS DOCUMENT HAS BEEN PREPARED PURSUANT TO AND SUBJECT TO THE TERMS OF AECOM'S APPOINTMENT BY ITS CLIENT. AECOM ACCEPTS NO LIABILITY FOR ANY USE OF THIS DOCUMENT OTHER THAN BY ITS ORIGINAL CLIENT OR FOLLOWING AECOM'S EXPRESS AGREEMENT TO SUCH USE, AND ONLY FOR THE PURPOSES FOR WHICH IT WAS PREPARED AND PROVIDED.

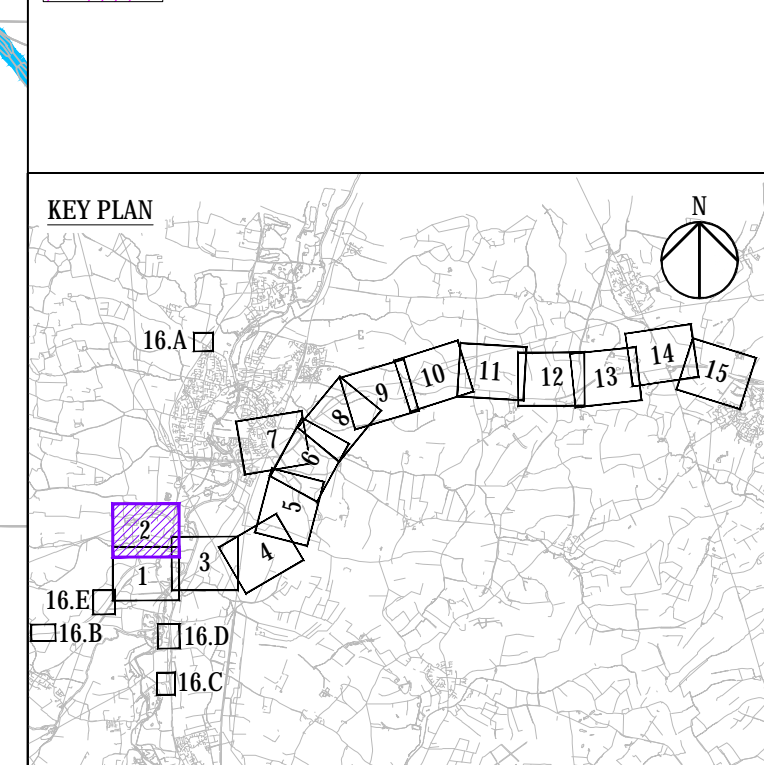
Drawing Number HE551495 -ACM	1 Originator -LSI	1 Volume -DC-0501	Rev P04
Location ZN1_SW_Z_ZZ -DR-DC-0501			1 Type 1 Role 1 Number

Rev Date: 03 February 2021 1:01:27
File Name: C:\P\010044\DCO\APP13.3\HE551495-ACM-LSI-ZN1_SW_Z_ZZ-DR-DC-0501



- NOTES
1. ALL DIMENSIONS ARE IN METRES UNLESS STATED OTHERWISE.
 2. DO NOT SCALE FROM THIS DRAWING. USE ONLY PRINTED DIMENSIONS.
 3. THE PROPOSED WORKS SHOWN ARE ILLUSTRATIVE ONLY AND WILL BE SUBJECT TO CHANGE AS PART OF DETAILED DESIGN DEVELOPMENT. ANY CHANGES WILL BE LIMITED TO BEING WITHIN THE ORDER LIMITS AND ANY OTHER CONSTRAINTS INCLUDED IN THE DEVELOPMENT CONSENT ORDER.
 4. ALL SOLID FILL HATCHES SHOW HIGHWAY CATCHMENTS INCLUDING CARRIAGEWAYS, VERGES AND CUTTINGS.
 5. THE NAMING OF THE CATCHMENT AREAS ARE TO DIFFERENTIATE BETWEEN THEM AND ARE THE PURPOSE OF THE DRAINAGE ENGINEERING PLANS ONLY.
 6. THESE DRAINAGE PLANS SHOULD BE READ IN CONJUNCTION WITH ALL OTHER PLANS AND DOCUMENTATION, IN PARTICULAR THE ROAD DRAINAGE STRATEGY REPORT [TR010044/APP/13.3]

- LEGEND
- ORDER LIMITS
 - LAND SURROUNDED BY, BUT NOT INCLUDED WITHIN THE ORDER LIMITS
 - EXISTING WATERCOURSE
 - OUTFALL MAINTAINED BY HIGHWAYS ENGLAND
 - OUTFALL MAINTAINED BY LOCAL HIGHWAY AUTHORITY
 - POND BC2 HIGHWAY CATCHMENT
 - A1 SOUTH BROOK CATCHMENT
 - ROXTON ROAD LINK NORTH CATCHMENT - 1
 - ROXTON ROAD LINK NORTH CATCHMENT - 2
 - FILLING STATION SERVICE ROAD SOUTH BROOK CATCHMENT 1
 - FILLING STATION SERVICE ROAD BEGWARY BROOK CATCHMENT
 - A1 NORTH BEGWARY BROOK WEST CATCHMENT
 - A1 NORTH BEGWARY BROOK EAST CATCHMENT



Final for DCO Application	JB	TD	03/02/21	P04
Revision Details	By	Check	Date	Suffix

Purpose of issue

DCO APPLICATION

Client
Highways England
Woodlands
Manton Lane
Manton Industrial Estate
Bedford
MK41 7LW

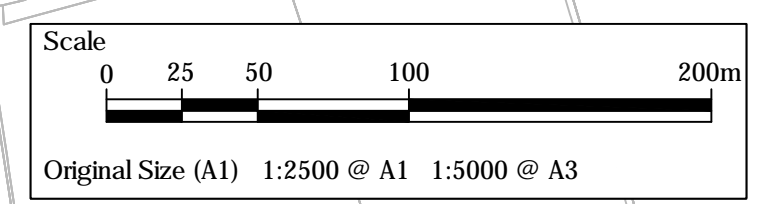
Development Consent Order Number
TR010044

Project Title
A428 BLACK CAT TO CAXTON GIBBET IMPROVEMENTS

Drawing Title
**DRAINAGE ENGINEERING PLAN
REGULATION 5(2)(O) & 6(2)
SHEET 2**

Designed JJP	Drawn JB	Checked JMW	Approved TD	Date 03/02/21
Internal Project No. 60541541		Suitability D7		
Scale @ A1 1:2500		Zone ZN1		
THIS DOCUMENT HAS BEEN PREPARED PURSUANT TO AND SUBJECT TO THE TERMS OF AECOM'S APPOINTMENT BY ITS CLIENT. AECOM ACCEPTS NO LIABILITY FOR ANY USE OF THIS DOCUMENT OTHER THAN BY ITS ORIGINAL CLIENT OR FOLLOWING AECOM'S EXPRESS AGREEMENT TO SUCH USE, AND ONLY FOR THE PURPOSES FOR WHICH IT WAS PREPARED AND PROVIDED.				
Drawing Number HE551495 -ACM		1 Originator -LSI		1 Volume -
Location ZN1_SW_Z_ZZ		1 Type -DR		1 Number -DC-0502
				Rev P04

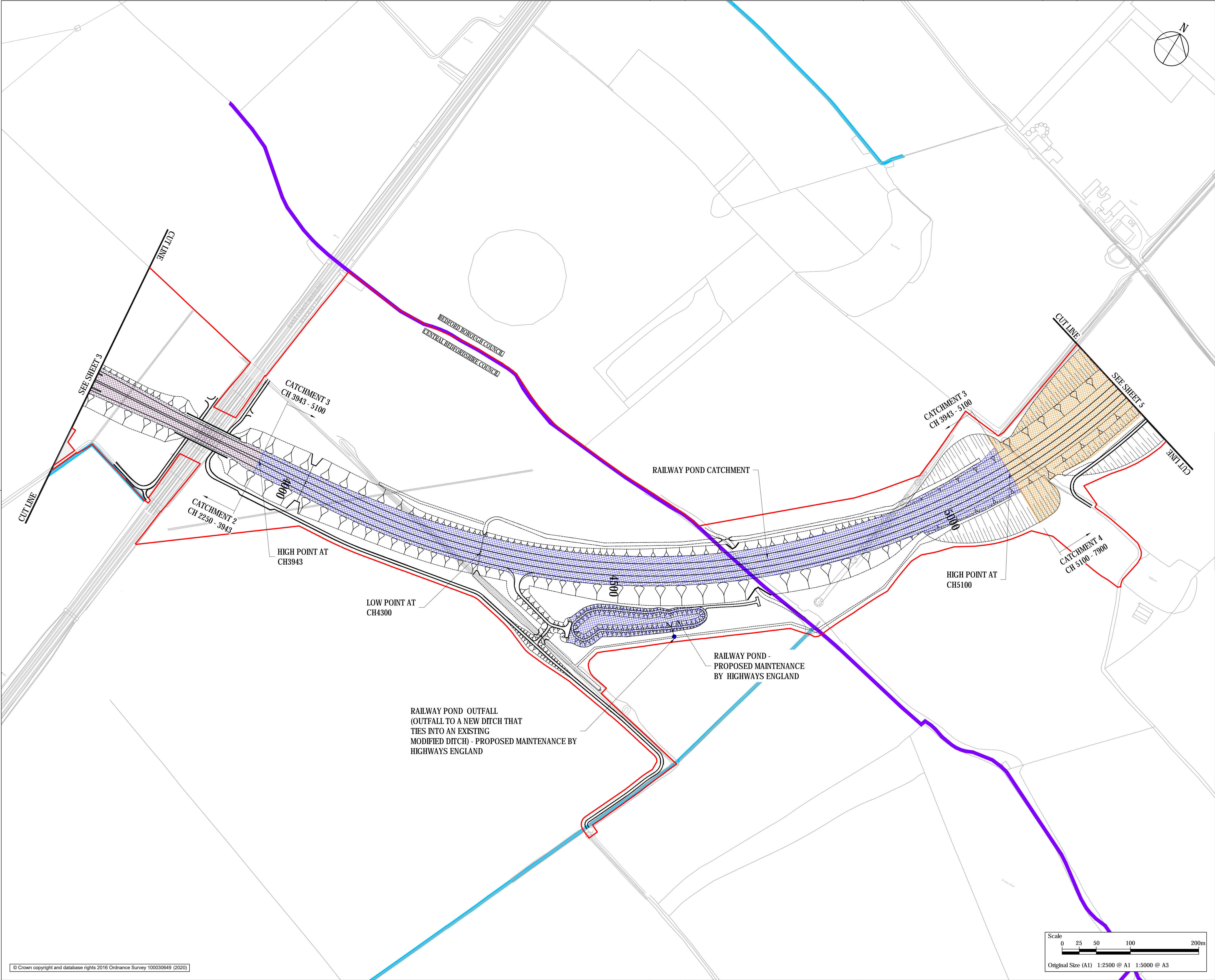
Plot Date: Wednesday, February 10, 2021, 6:52:21 PM
File Name: C:\P\010044\DCO\APP\13.3\DR010044-DCO-APP-13.3-SW_Z_ZZ-DC-0502



Original Size (A1) 1:2500 @ A1 1:5000 @ A3

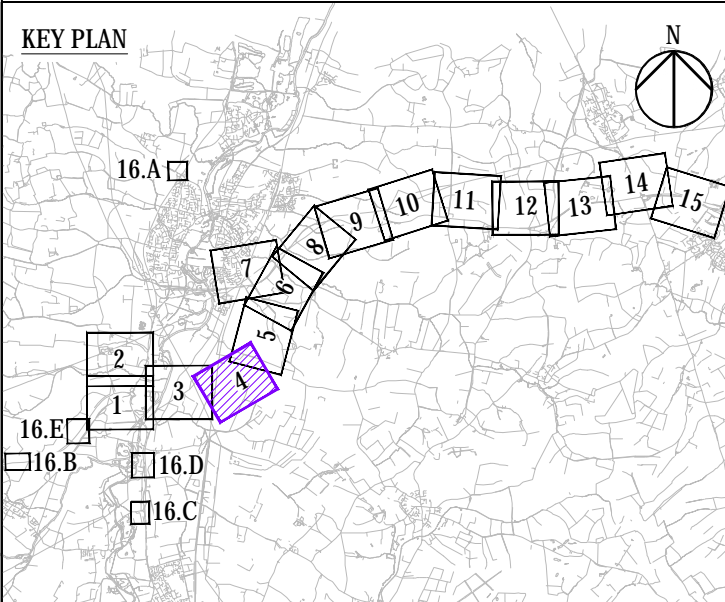
© Crown copyright and database rights 2016 Ordnance Survey 100030649 (2020)

Rev'd Date: Wednesday, 18/02/2021 6:50:10 PM
File Name: C:\P\WORK\6044\DCOM_REV\05\HE551495-ACM\LSI_ZN2_SW_Z_ZZ-DC-0504



- NOTES
1. ALL DIMENSIONS ARE IN METRES UNLESS STATED OTHERWISE.
 2. DO NOT SCALE FROM THIS DRAWING. USE ONLY PRINTED DIMENSIONS.
 3. THE PROPOSED WORKS SHOWN ARE ILLUSTRATIVE ONLY AND WILL BE SUBJECT TO CHANGE AS PART OF DETAILED DESIGN DEVELOPMENT. ANY CHANGES WILL BE LIMITED TO BEING WITHIN THE ORDER LIMITS AND ANY OTHER CONSTRAINTS INCLUDED IN THE DEVELOPMENT CONSENT ORDER.
 4. ALL SOLID FILL HATCHES SHOW HIGHWAY CATCHMENTS INCLUDING CARRIAGeways, VERGES AND CUTTINGS.
 5. THE NAMING OF THE CATCHMENT AREAS ARE TO DIFFERENTIATE BETWEEN THEM AND ARE THE PURPOSE OF THE DRAINAGE ENGINEERING PLANS ONLY.
 6. THESE DRAINAGE PLANS SHOULD BE READ IN CONJUNCTION WITH ALL OTHER PLANS AND DOCUMENTATION, IN PARTICULAR THE ROAD DRAINAGE STRATEGY REPORT [TR010044/APP/13.3]

- LEGEND
- ORDER LIMITS
 - LAND SURROUNDED BY, BUT NOT INCLUDED WITHIN THE ORDER LIMITS
 - LOCAL AUTHORITY BOUNDARY
 - EXISTING WATERCOURSE
 - OUTFALL MAINTAINED BY HIGHWAYS ENGLAND
 - OUTFALL MAINTAINED BY LOCAL HIGHWAY AUTHORITY
 - RECTORY FARM POND HIGHWAY CATCHMENT
 - RAILWAY POND HIGHWAY CATCHMENT
 - HEN BROOK SOUTH POND HIGHWAY CATCHMENT



Final for DCO Application	JB	TD	03/02/21	P04
Revision Details	By	Check	Date	Suffix

DCO APPLICATION

Client
Highways England
Woodlands
Manton Lane
Manton Industrial Estate
Bedford
MK41 7LW



Development Consent Order Number
TR010044

Project Title
A428 BLACK CAT TO CAXTON GIBBET IMPROVEMENTS

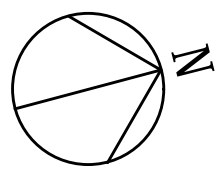
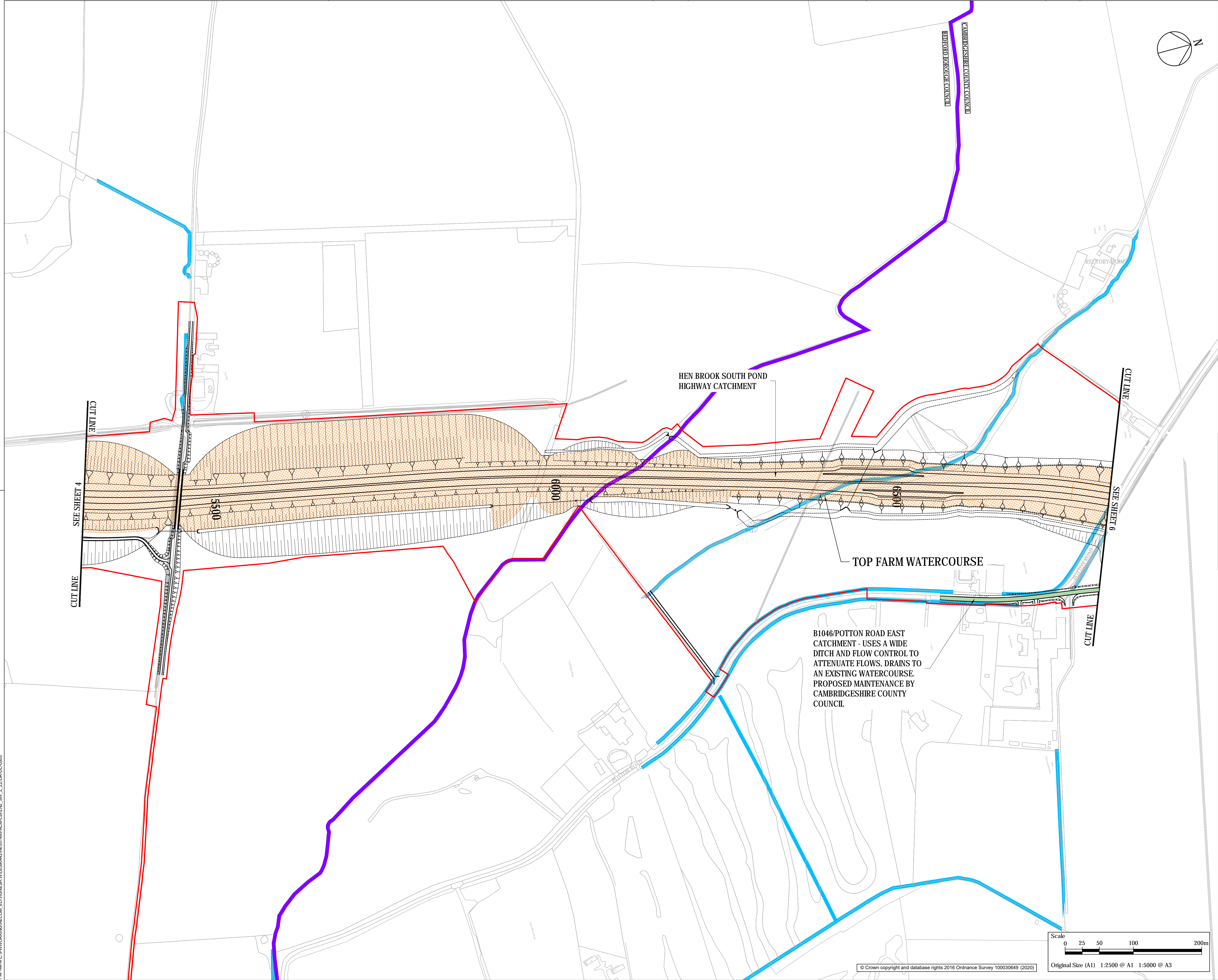
DRAINAGE ENGINEERING PLAN REGULATION 5(2)(O) & 6(2) SHEET 4

Designed JJP	Drawn JB	Checked JMW	Approved TD	Date 03/02/21
Internal Project No. 60541541	Suitability D7	Zone ZN2		

THIS DOCUMENT HAS BEEN PREPARED PURSUANT TO AND SUBJECT TO THE TERMS OF AECOM'S APPOINTMENT BY ITS CLIENT. AECOM ACCEPTS NO LIABILITY FOR ANY USE OF THIS DOCUMENT OTHER THAN BY ITS ORIGINAL CLIENT OR FOLLOWING AECOM'S EXPRESS AGREEMENT TO SUCH USE, AND ONLY FOR THE PURPOSES FOR WHICH IT WAS PREPARED AND PROVIDED.

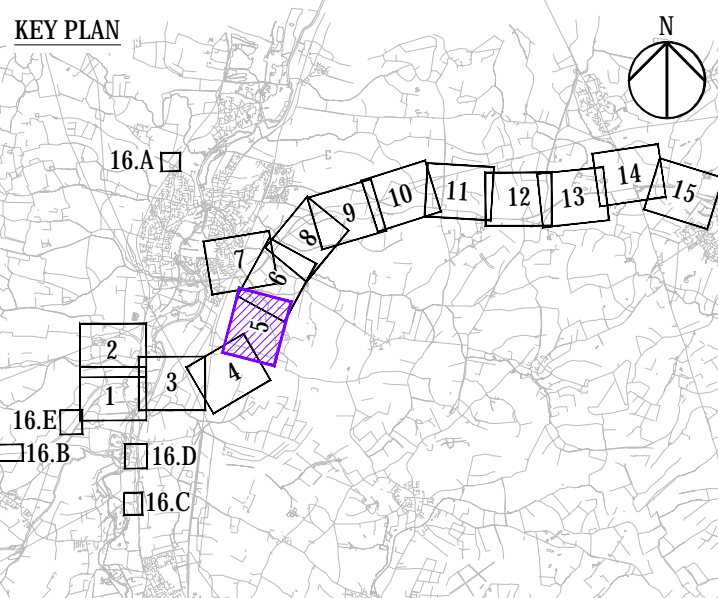
Drawing Number HE551495 -ACM -LSI -	1 Originator 1 Volume	Rev P04
Location ZN2_SW_Z_ZZ -DR -DC-0504	1 Type 1 Role 1 Number	

Plot Date: Wednesday, February 13, 2025 6:55:31 PM
File Name: C:\P\WORK\60541541\DCOM_REV\03\02\21\HE551495-ACM-LSI-ZN2_SW_Z_ZZ-DC-0505



- NOTES
1. ALL DIMENSIONS ARE IN METRES UNLESS STATED OTHERWISE.
 2. DO NOT SCALE FROM THIS DRAWING. USE ONLY PRINTED DIMENSIONS.
 3. THE PROPOSED WORKS SHOWN ARE ILLUSTRATIVE ONLY AND WILL BE SUBJECT TO CHANGE AS PART OF DETAILED DESIGN DEVELOPMENT. ANY CHANGES WILL BE LIMITED TO BEING WITHIN THE ORDER LIMITS AND ANY OTHER CONSTRAINTS INCLUDED IN THE DEVELOPMENT CONSENT ORDER.
 4. ALL SOLID FILL HATCHES SHOW HIGHWAY CATCHMENTS INCLUDING CARRIAGEWAYS, VERGES AND CUTTINGS.
 5. THE NAMING OF THE CATCHMENT AREAS ARE TO DIFFERENTIATE BETWEEN THEM AND ARE THE PURPOSE OF THE DRAINAGE ENGINEERING PLANS ONLY.
 6. THESE DRAINAGE PLANS SHOULD BE READ IN CONJUNCTION WITH ALL OTHER PLANS AND DOCUMENTATION, IN PARTICULAR THE ROAD DRAINAGE STRATEGY REPORT [TR010044/APP/13.3]

- LEGEND
- ORDER LIMITS
 - LOCAL AUTHORITY BOUNDARY
 - EXISTING WATERCOURSE
 - OUTFALL MAINTAINED BY HIGHWAYS ENGLAND
 - OUTFALL MAINTAINED BY LOCAL HIGHWAY AUTHORITY
 - HEN BROOK SOUTH POND HIGHWAY CATCHMENT
 - B1046/POTTON ROAD EAST CATCHMENT



Final for DCO Application	JB	TD	03/02/21	P04
Revision Details	By	Check	Date	Suffix

Purpose of issue

DCO APPLICATION

Client
Highways England
Woodlands
Manton Lane
Manton Industrial Estate
Bedford
MK41 7LW

Development Consent Order Number
TR010044

Project Title
A428 BLACK CAT TO CAXTON GIBBET IMPROVEMENTS

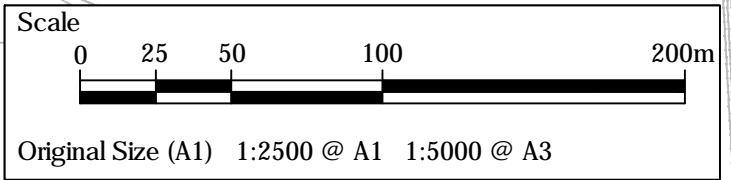
Drawing Title
**DRAINAGE ENGINEERING PLAN
REGULATION 5(2)(O) & 6(2)
SHEET 5**

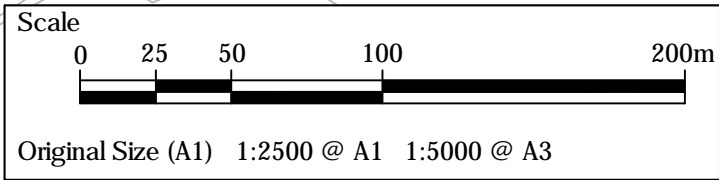
Designed JJP	Drawn JB	Checked JMW	Approved TD	Date 03/02/21
Internal Project No. 60541541		Suitability D7		
Scale @ A1 1:2500		Zone ZN2		



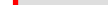





THIS DOCUMENT HAS BEEN PREPARED PURSUANT TO AND SUBJECT TO THE TERMS OF AECOM'S APPOINTMENT BY ITS CLIENT. AECOM ACCEPTS NO LIABILITY FOR ANY USE OF THIS DOCUMENT OTHER THAN BY ITS ORIGINAL CLIENT OR FOLLOWING AECOM'S EXPRESS AGREEMENT TO SUCH USE, AND ONLY FOR THE PURPOSES FOR WHICH IT WAS PREPARED AND PROVIDED.

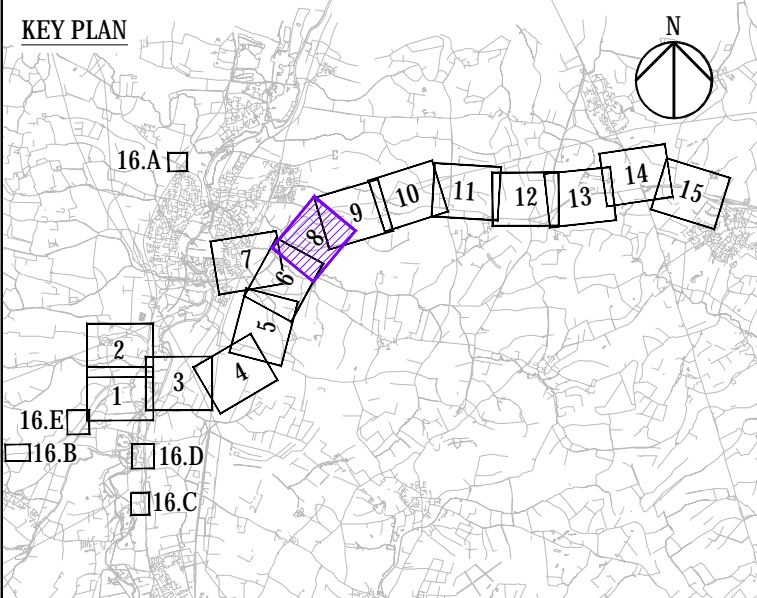
Drawing Number HE551495 -ACM -LSI -	1 Originator 1 Volume	Rev P04
Location ZN2_SW_Z_ZZ -DR -DC-0505	1 Type 1 Role 1 Number	

© Crown copyright and database rights 2016 Ordnance Survey 100030649 (2020)





- | LEGEND | |
|-------------------------------------------------------------------------------------|--------------------------------------------------------------|
|  | ORDER LIMITS |
|  | LAND SURROUNDED BY, BUT NOT INCLUDED WITHIN THE ORDER LIMITS |
|  | EXISTING WATERCOURSE |
|  | OUTFALL MAINTAINED BY HIGHWAYS ENGLAND |
|  | OUTFALL MAINTAINED BY LOCAL HIGHWAY AUTHORITY |
|  | HEN BROOK NORTH POND HIGHWAY CATCHMENT |
|  | WINTRINGHAM BROOK POND POND HIGHWAY CATCHMENT |
|  | WINTINGHAM BROOK TRIBUTARY WEST POND HIGHWAY CATCHMENT |



Final for DCO Application	JB TD	03/02/21	P04
Revision Details	By Check	Date	Suffix

Client
Highways England
Woodlands
Manton Lane
Manton Industrial Estate
Bedford
MK41 7LW

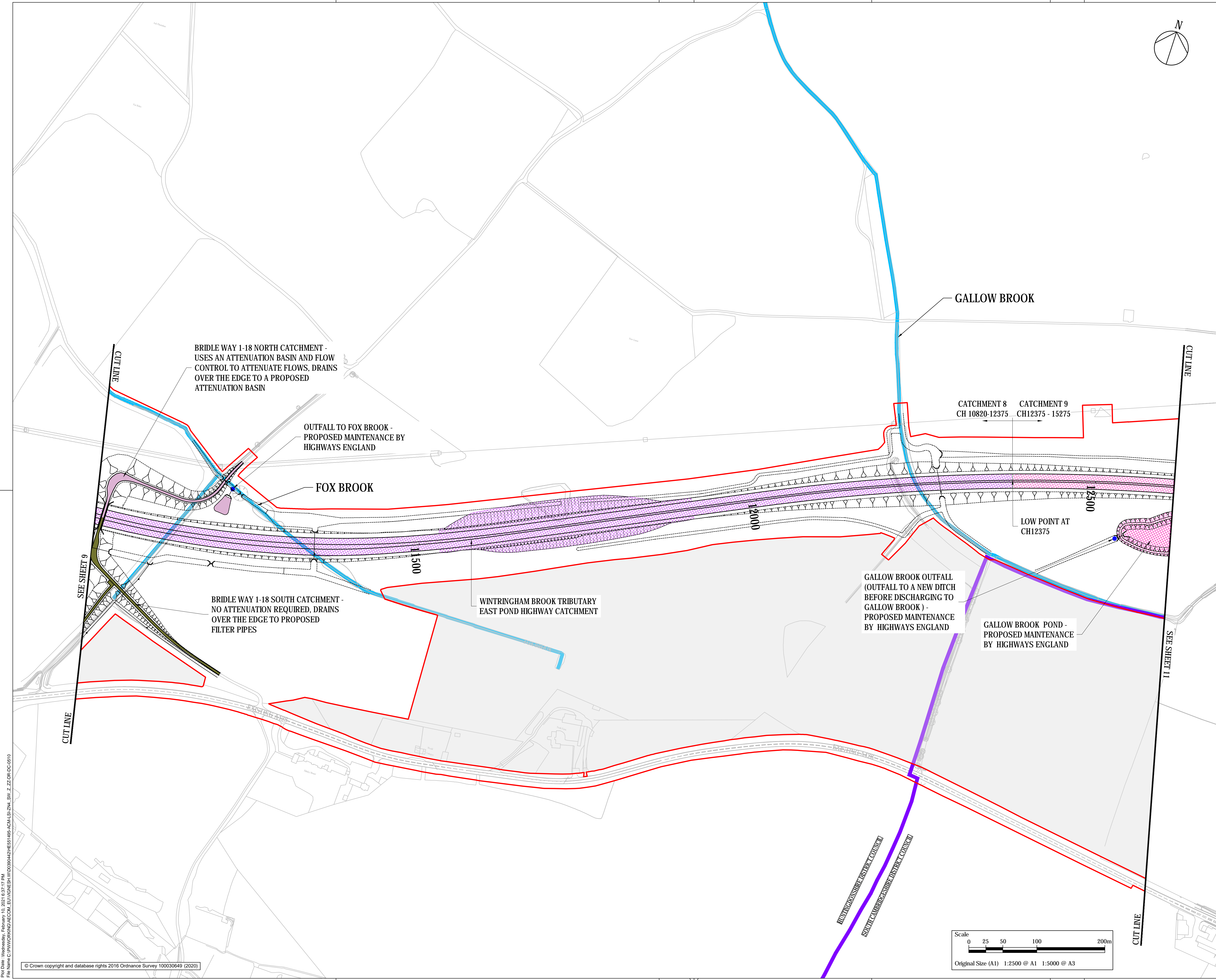
Project Title
A428 BLACK CAT TO CAXTON GIBBET IMPROVEMENTS

DRAINAGE ENGINEERING
PLAN
REGULATION 5(2)(O) & 6(2)
SHEET 8

Designed JJP	Drawn JB	Checked JMW	Approved TD	Date 03/02/21
Internal Project No. 60541541			Suitability D7	
Scale @ A1 1:2500			Zone ZN3	

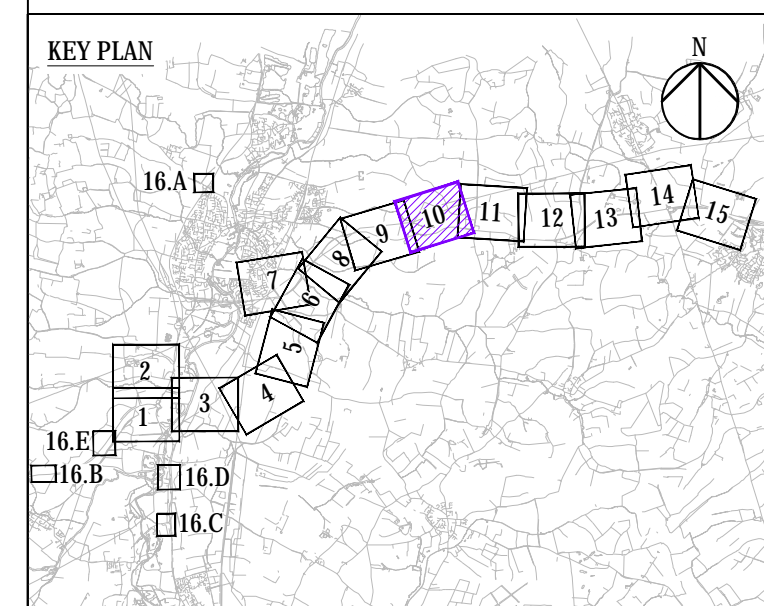
THIS DOCUMENT HAS BEEN PREPARED PURSUANT TO AND SUBJECT TO THE TERMS OF AECOM'S APPOINTMENT BY ITS CLIENT. AECOM ACCEPTS NO LIABILITY FOR ANY USE OF THIS DOCUMENT OTHER THAN BY ITS ORIGINAL CLIENT OR FOLLOWING AECOM'S EXPRESS AGREEMENT TO SUCH USE, AND ONLY FOR THE PURPOSES FOR WHICH IT WAS PREPARED AND PROVIDED.

Drawing Number			Rev
Highways England PIN	I Originator	I Volume	P04
HE551495	-ACM	-LSI -	
ZN3_SW_Z_ZZ	-DR	-DC-0508	
Location	I Type	I Role I Number	



- NOTES
1. ALL DIMENSIONS ARE IN METRES UNLESS STATED OTHERWISE.
 2. DO NOT SCALE FROM THIS DRAWING. USE ONLY PRINTED DIMENSIONS.
 3. THE PROPOSED WORKS SHOWN ARE ILLUSTRATIVE ONLY AND WILL BE SUBJECT TO CHANGE AS PART OF DETAILED DESIGN DEVELOPMENT. ANY CHANGES WILL BE LIMITED TO BEING WITHIN THE ORDER LIMITS AND ANY OTHER CONSTRAINTS INCLUDED IN THE DEVELOPMENT CONSENT ORDER.
 4. ALL SOLID FILL HATCHES SHOW HIGHWAY CATCHMENTS INCLUDING CARRIAGeways, VERGES AND CUTTINGS.
 5. THE NAMING OF THE CATCHMENT AREAS ARE TO DIFFERENTIATE BETWEEN THEM AND ARE THE PURPOSE OF THE DRAINAGE ENGINEERING PLANS ONLY.
 6. THESE DRAINAGE PLANS SHOULD BE READ IN CONJUNCTION WITH ALL OTHER PLANS AND DOCUMENTATION, IN PARTICULAR THE ROAD DRAINAGE STRATEGY REPORT [TR010044/APP/13.3]

- LEGEND
- ORDER LIMITS
 - LAND SURROUNDED BY, BUT NOT INCLUDED WITHIN THE ORDER LIMITS
 - LOCAL AUTHORITY BOUNDARY
 - EXISTING WATERCOURSE
 - OUTFALL MAINTAINED BY HIGHWAYS ENGLAND
 - OUTFALL MAINTAINED BY LOCAL HIGHWAY AUTHORITY
 - WINTRINGHAM BROOK TRIBUTARY EAST POND HIGHWAY CATCHMENT
 - GALLOW BROOK POND HIGHWAY CATCHMENT
 - BRIDLE WAY 1-18 NORTH CATCHMENT
 - BRIDLE WAY 1-18 SOUTH CATCHMENT



Final for DCO Application	JB	TD	03/02/21	P04
Revision Details	By	Check	Date	Suffix
Purpose of issue				

DCO APPLICATION

Client
Highways England
Woodlands
Manton Lane
Manton Industrial Estate
Bedford
MK41 7LW

Working on behalf of
highways england

Development Consent Order Number
TR010044

Project Title
A428 BLACK CAT TO CAXTON GIBBET IMPROVEMENTS

Drawing Title
**DRAINAGE ENGINEERING PLAN
REGULATION 5(2)(O) & 6(2)
SHEET 10**

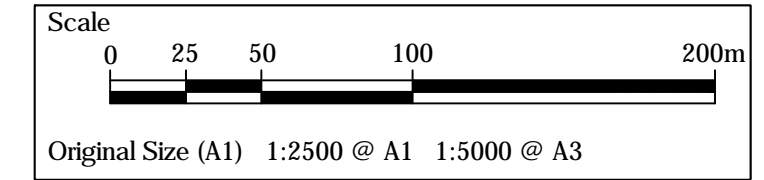
Designed JJP	Drawn JB	Checked JMW	Approved TD	Date 03/02/21
Internal Project No. 60541541		Suitability D7		
Scale @ A1 1:2500		Zone ZN4		

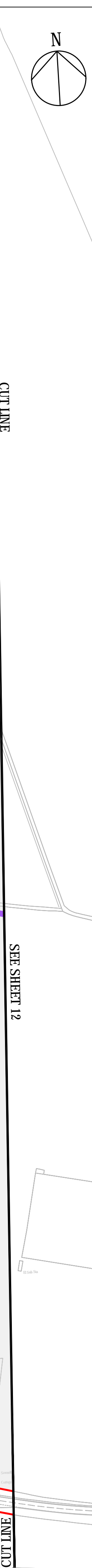
THIS DOCUMENT HAS BEEN PREPARED PURSUANT TO AND SUBJECT TO THE TERMS OF AECOM'S APPOINTMENT BY ITS CLIENT. AECOM ACCEPTS NO LIABILITY FOR ANY USE OF THIS DOCUMENT OTHER THAN BY ITS ORIGINAL CLIENT OR FOLLOWING AECOM'S EXPRESS AGREEMENT TO SUCH USE, AND ONLY FOR THE PURPOSES FOR WHICH IT WAS PREPARED AND PROVIDED.





Drawing Number HE551495 -ACM	1 Originator -LSI	1 Volume -DC-0510	Rev P04
Location ZN4_SW_Z_ZZ	1 Type -DR	1 Role -DC	1 Number 0510

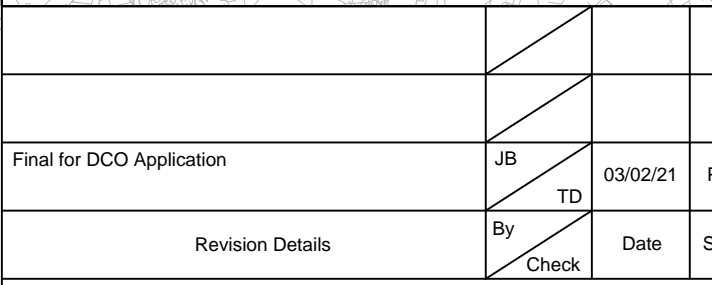
Plot Date: Wednesday, 24/02/2021 15:07:17 PM
File Name: C:\P\WORK\60541541\DCO\DRAWINGS\HE551495-ACM-LSI-ZN4_SW_Z_ZZ-DR-DC-0510

© Crown copyright and database rights 2016 Ordnance Survey 100030649 (2020)





- LEGEND**
-  ORDER LIMITS
 -  LAND SURROUNDED BY, BUT NOT INCLUDED WITHIN THE ORDER LIMITS
 -  LOCAL AUTHORITY BOUNDARY
 -  EXISTING WATERCOURSE
 -  OUTFALL MAINTAINED BY HIGHWAYS ENGLAND
 -  OUTFALL MAINTAINED BY LOCAL HIGHWAY AUTHORITY
 -  GALLOW BROOK POND HIGHWAY CATCHMENT
 -  TOSELAND ROAD NORTH CATCHMENT 1
 -  TOSELAND ROAD NORTH CATCHMENT 2
 -  TOSELAND ROAD SOUTH CATCHMENT 1
 -  TOSELAND ROAD SOUTH CATCHMENT 2
 -  EXISTING TOSELAND ROAD CATCHMENT



Client
Highways England
Woodlands
Manton Lane
Manton Industrial Estate
Bedford
MK41 7LW

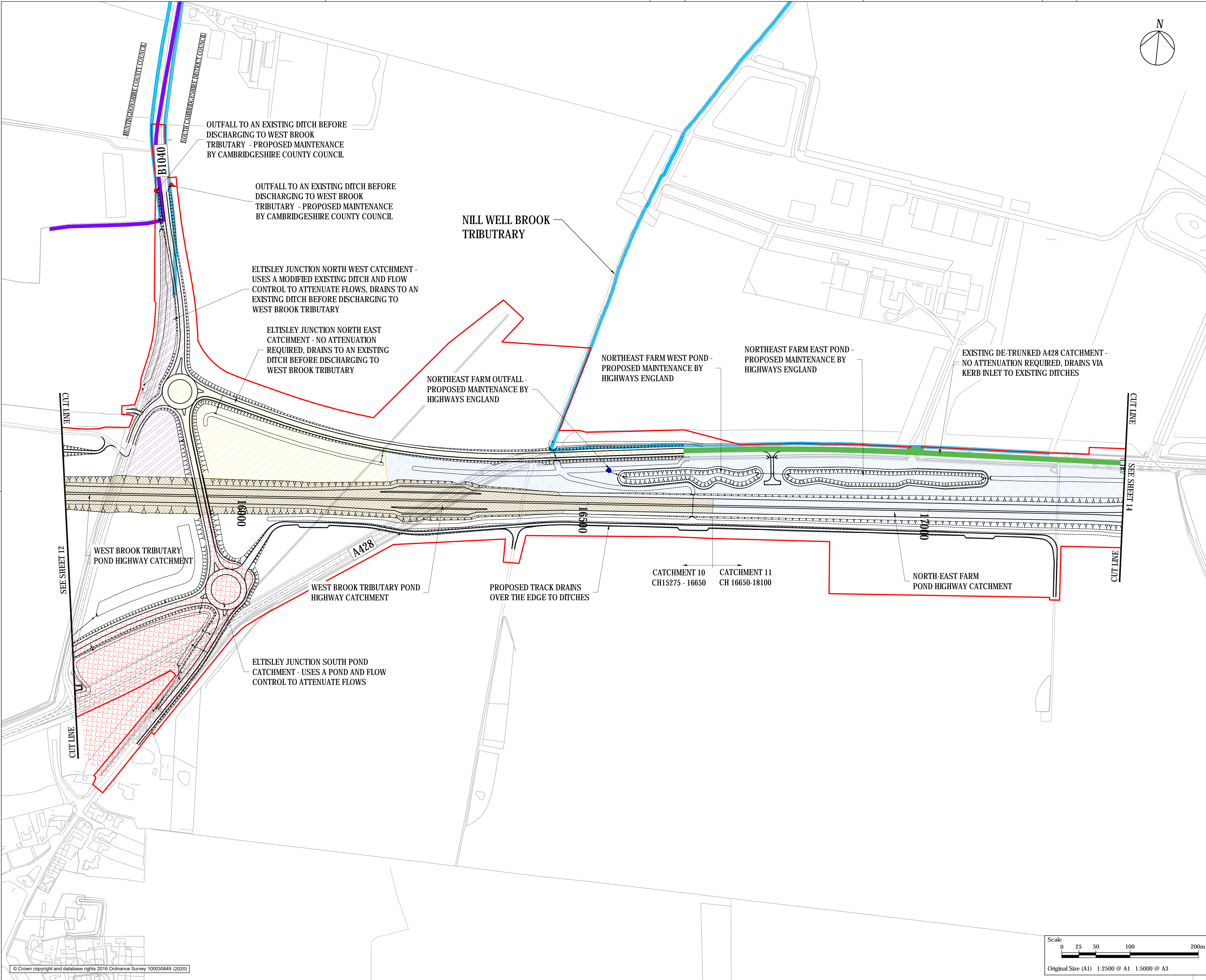
Project Title

A428 BLACK CAT TO
CAXTON GIBBET
IMPROVEMENTS

Designed JJP	Drawn JB	Checked JMW	Approved TD	Date 03/02/21
Internal Project No. 60541541			Suitability D7	
Scale @ A1 1:2500			Zone ZN4	

Drawing Number			Highways England PIN		I Originator	I Volume	Rev
HE551495			-ACM		-LSI	-	P0
ZN4_SW_Z_ZZ			-DR		-DC	-0511	
Location			I Type	I Role	I Number		

Proj Data: Thursday, February 11, 2021 15:03:29 PM
File Name: C:\P\01\WORKING\DCO\CM_EU\163856\W\00090442\HE551495-ACM-LSI-ZN5_SW_Z_ZZ-DC-0513



NOTES

- ALL DIMENSIONS ARE IN METRES UNLESS STATED OTHERWISE.
- DO NOT SCALE FROM THIS DRAWING. USE ONLY PRINTED DIMENSIONS.
- THE PROPOSED WORKS SHOWN ARE ILLUSTRATIVE ONLY AND WILL BE SUBJECT TO CHANGE AS PART OF DETAILED DESIGN DEVELOPMENT. ANY CHANGES WILL BE LIMITED TO BEING WITHIN THE ORDER LIMITS AND ANY OTHER CONSTRAINTS INCLUDED IN THE DEVELOPMENT CONSENT ORDER.
- ALL SOLID FILL HATCHES SHOW HIGHWAY CATCHMENTS INCLUDING CARRIAGEWAYS, VERGES AND CUTTINGS.
- THE NAMING OF THE CATCHMENT AREAS ARE TO DIFFERENTIATE BETWEEN THEM AND ARE THE PURPOSE OF THE DRAINAGE ENGINEERING PLANS ONLY.
- THESE DRAINAGE PLANS SHOULD BE READ IN CONJUNCTION WITH ALL OTHER PLANS AND DOCUMENTATION, IN PARTICULAR THE ROAD DRAINAGE STRATEGY REPORT [TR010044/APP/13.3]

LEGEND

- ORDER LIMITS
- LOCAL AUTHORITY BOUNDARY
- EXISTING WATERCOURSE
- OUTFALL MAINTAINED BY HIGHWAYS ENGLAND
- OUTFALL MAINTAINED BY LOCAL HIGHWAY AUTHORITY
- WEST BROOK TRIBUTARY POND HIGHWAY CATCHMENT
- NORTH-EAST FARM POND HIGHWAY CATCHMENT
- ELTISLEY JUNCTION SOUTH POND CATCHMENT
- ELTISLEY JUNCTION NORTH WEST CATCHMENT
- ELTISLEY JUNCTION NORTH EAST CATCHMENT
- EXISTING DE-TRUNKED A428 CATCHMENT

KEY PLAN

Final for DCO Application	JB	TD	03/02/21	P04
Revision Details	By	Check	Date	Suffix
Purpose of issue				

DCO APPLICATION

Client
Highways England
Woodlands
Manton Lane
Manton Industrial Estate
Bedford
MK41 7LW

Development Consent Order Number
TR010044

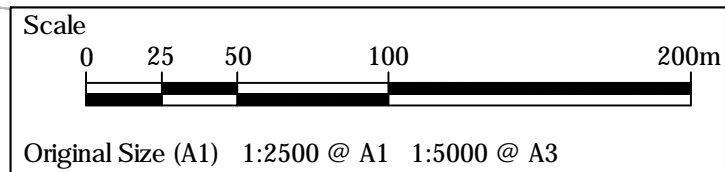
Project Title
A428 BLACK CAT TO CAXTON GIBBET IMPROVEMENTS

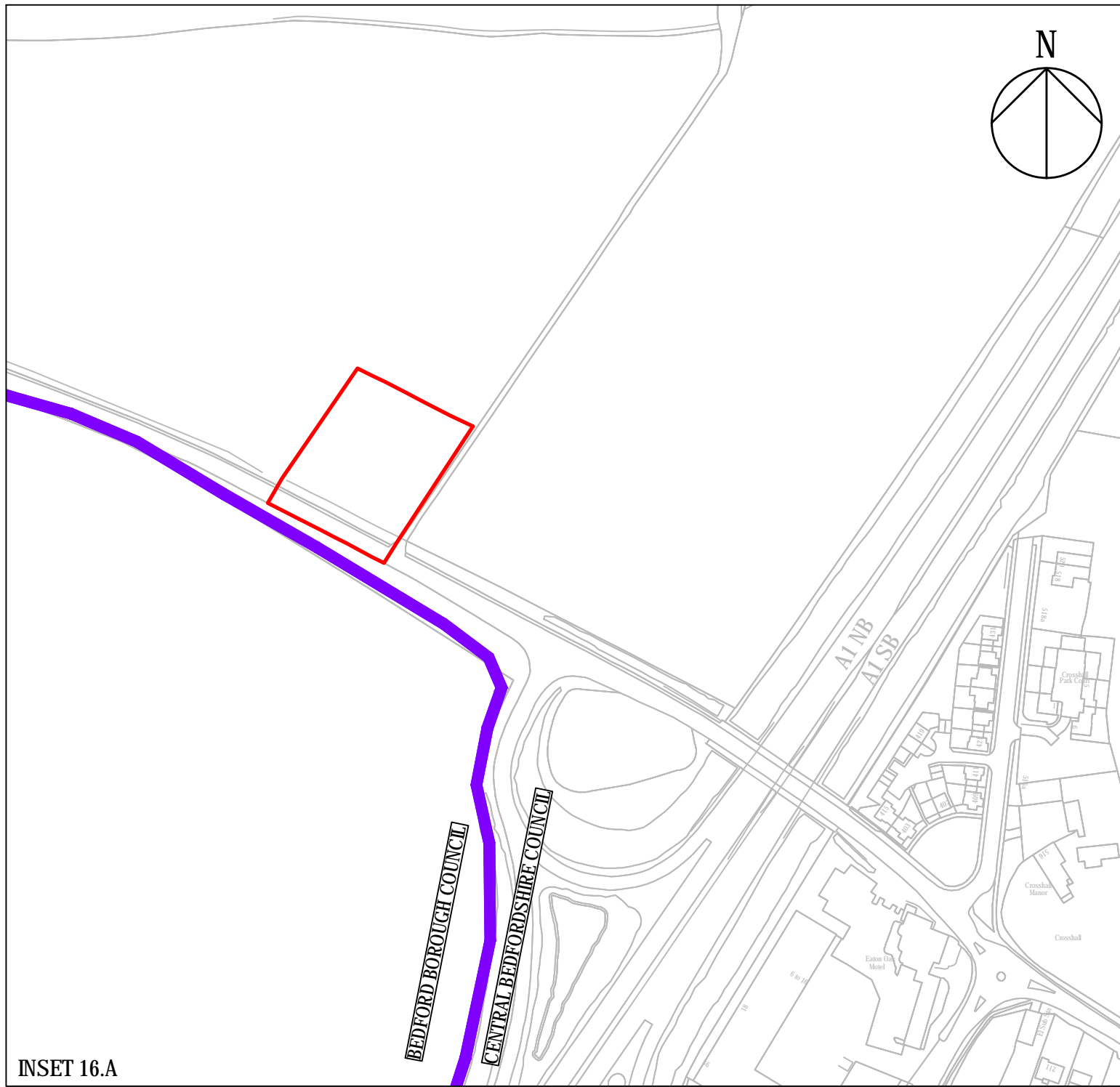
Drawing Title
**DRAINAGE ENGINEERING PLAN
REGULATION 5(2)(O) & 6(2)
SHEET 13**

Designed JJP	Drawn JB	Checked JMW	Approved TD	Date 03/02/21
Internal Project No. 60541541		Suitability D7		
Scale @ A1 1:2500		Zone ZN5		

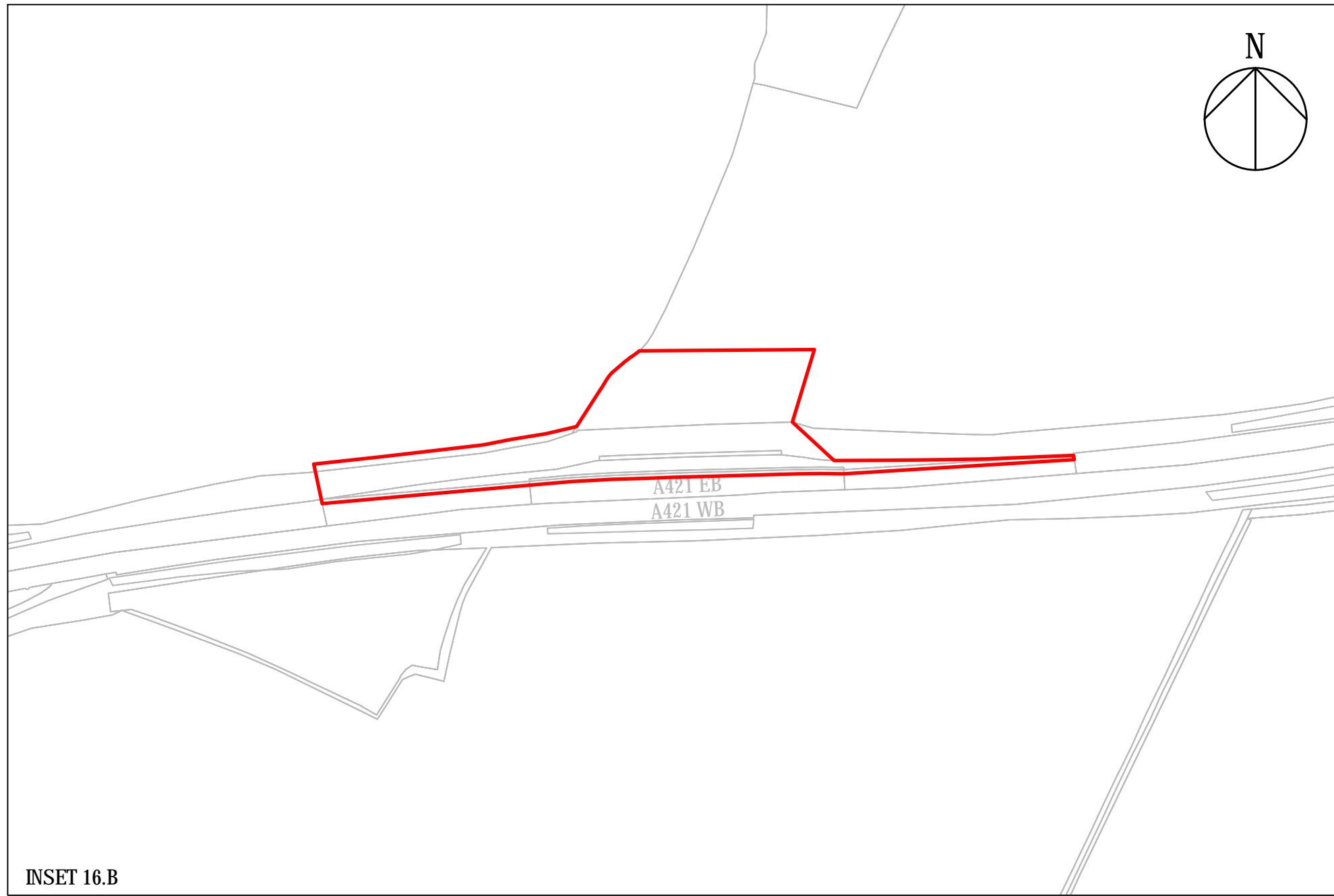
THIS DOCUMENT HAS BEEN PREPARED PURSUANT TO AND SUBJECT TO THE TERMS OF AECOM'S APPOINTMENT BY ITS CLIENT. AECOM ACCEPTS NO LIABILITY FOR ANY USE OF THIS DOCUMENT OTHER THAN BY ITS ORIGINAL CLIENT OR FOLLOWING AECOM'S EXPRESS AGREEMENT TO SUCH USE, AND ONLY FOR THE PURPOSES FOR WHICH IT WAS PREPARED AND PROVIDED.

Drawing Number HE551495 -ACM -LSI - ZN5_SW_Z_ZZ -DR -DC-0513	Rev P04
--------------------------------------------------------------------	------------

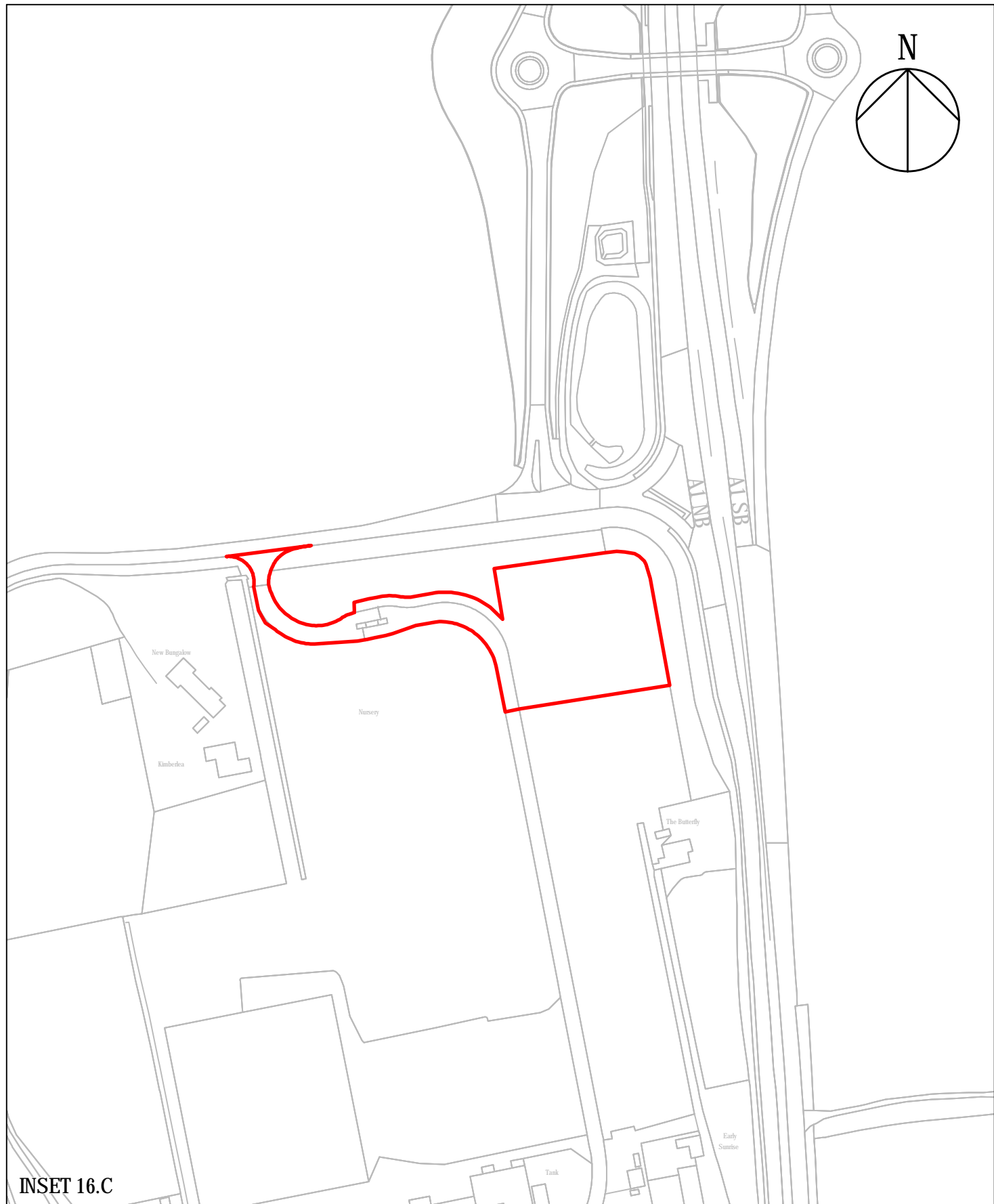




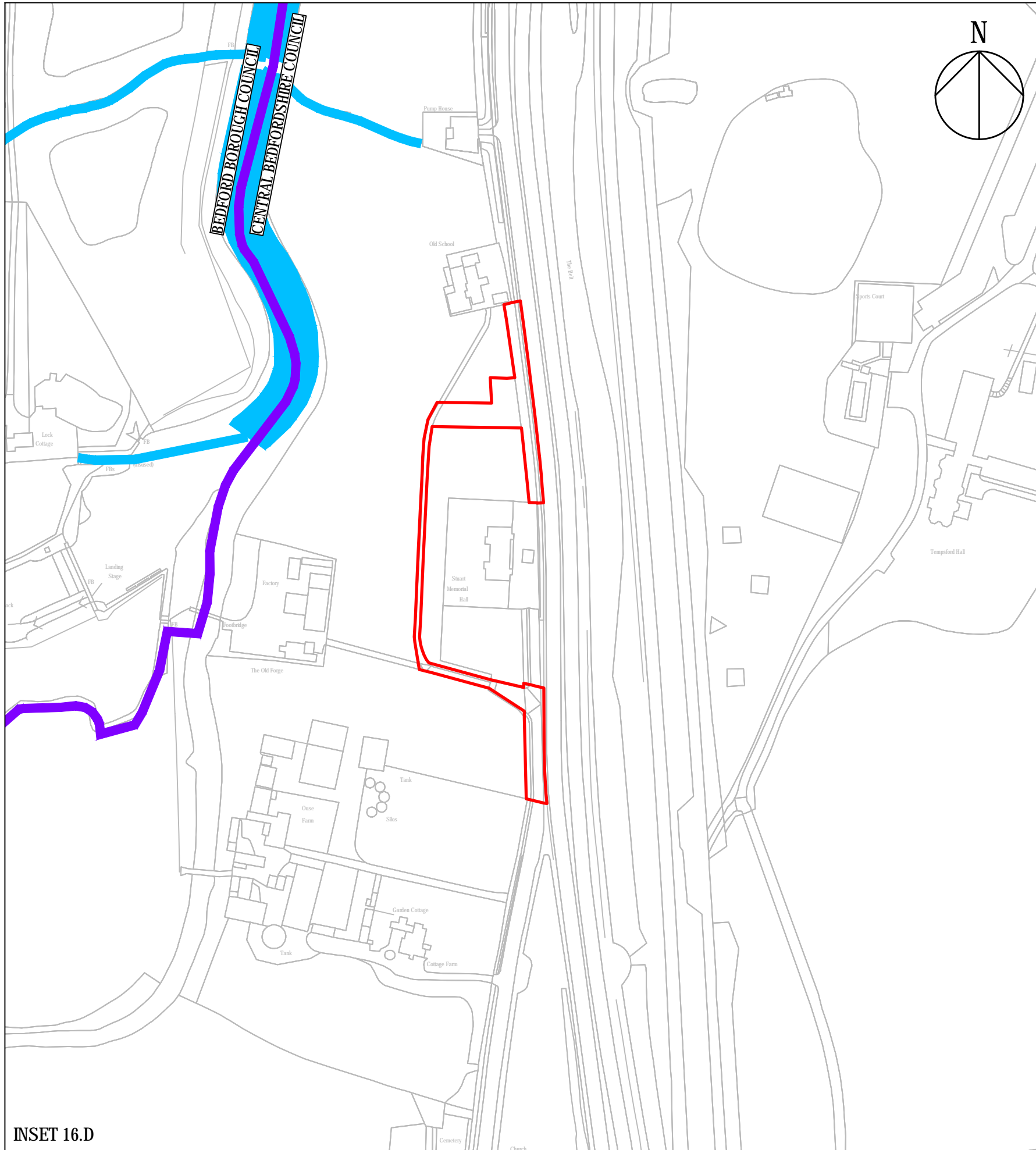
INSET 16.A



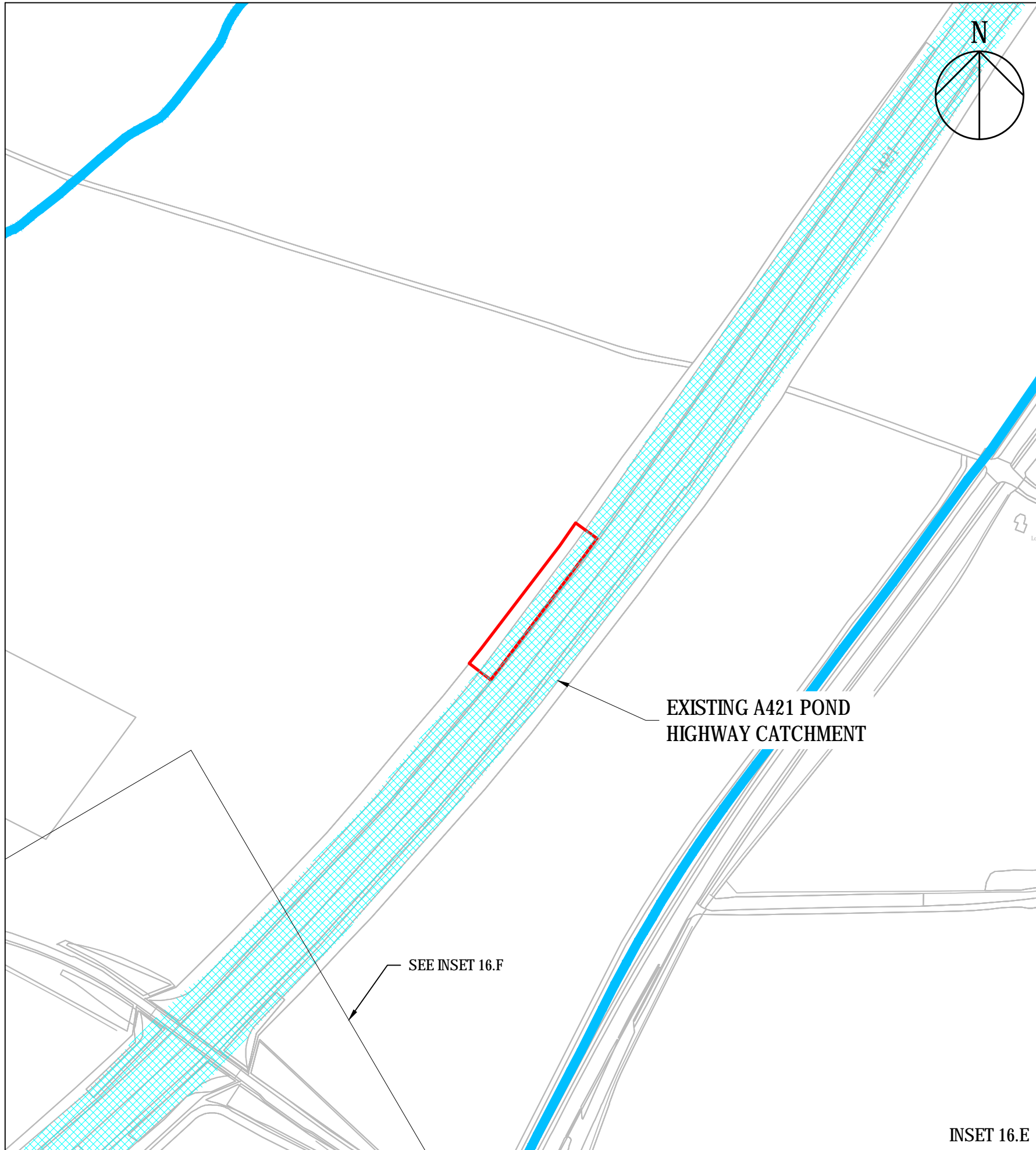
INSET 16.B



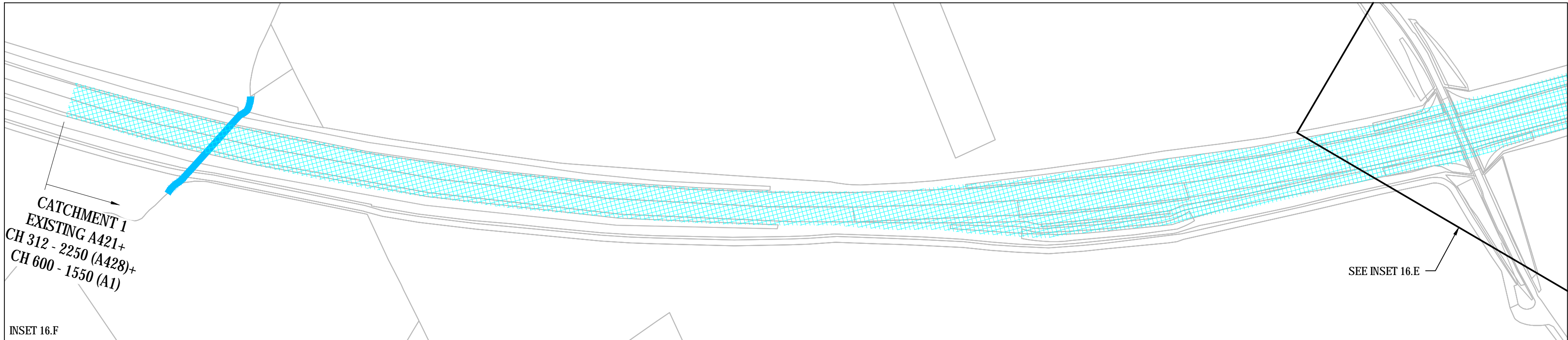
INSET 16.C



INSET 16.D



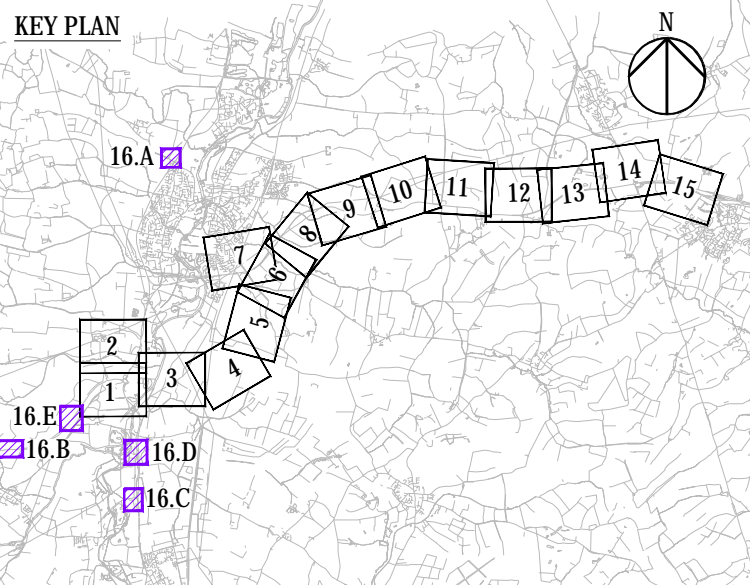
INSET 16.E



INSET 16.F

- NOTES
1. ALL DIMENSIONS ARE IN METRES UNLESS STATED OTHERWISE.
 2. DO NOT SCALE FROM THIS DRAWING. USE ONLY PRINTED DIMENSIONS.
 3. THE PROPOSED WORKS SHOWN ARE ILLUSTRATIVE ONLY AND WILL BE SUBJECT TO CHANGE AS PART OF DETAILED DESIGN DEVELOPMENT. ANY CHANGES WILL BE LIMITED TO BEING WITHIN THE ORDER LIMITS AND ANY OTHER CONSTRAINTS INCLUDED IN THE DEVELOPMENT CONSENT ORDER.
 4. ALL SOLID FILL HATCHES SHOW HIGHWAY CATCHMENTS INCLUDING CARRIAGeways, VERGES AND CUTTINGS.
 5. THE NAMING OF THE CATCHMENT AREAS ARE TO DIFFERENTIATE BETWEEN THEM AND ARE THE PURPOSE OF THE DRAINAGE ENGINEERING PLANS ONLY.
 6. THESE DRAINAGE PLANS SHOULD BE READ IN CONJUNCTION WITH ALL OTHER PLANS AND DOCUMENTATION, IN PARTICULAR THE ROAD DRAINAGE STRATEGY REPORT [TR010044/APP/13.3]

- LEGEND
- ORDER LIMITS
 - LOCAL AUTHORITY BOUNDARY
 - EXISTING WATERCOURSE
 - OUTFALL MAINTAINED BY HIGHWAYS ENGLAND
 - OUTFALL MAINTAINED BY LOCAL HIGHWAY AUTHORITY
 - EXISTING A421 POND HIGHWAY CATCHMENT



Final for DCO Application	JB	TD	03/02/21	P04
Revision Details	By	Check	Date	Suffix

Purpose of issue

DCO APPLICATION

Client
Highways England
Woodlands
Manton Lane
Manton Industrial Estate
Bedford
MK41 7LW

Development Consent Order Number
TR010044

Project Title
A428 BLACK CAT TO CAXTON GIBBET IMPROVEMENTS

Drawing Title
**DRAINAGE ENGINEERING PLAN
REGULATION 5(2)(O) & 6(2)
SHEET 16**

Designed JJP	Drawn JB	Checked JMW	Approved TD	Date 03/02/21
Internal Project No. 60541541	Suitability D7	Scale @ A1 1:2500	Zone ZN5	

THIS DOCUMENT HAS BEEN PREPARED PURSUANT TO AND SUBJECT TO THE TERMS OF AECOM'S APPOINTMENT BY ITS CLIENT. AECOM ACCEPTS NO LIABILITY FOR ANY USE OF THIS DOCUMENT OTHER THAN BY ITS ORIGINAL CLIENT OR FOLLOWING AECOM'S EXPRESS AGREEMENT TO SUCH USE, AND ONLY FOR THE PURPOSES FOR WHICH IT WAS PREPARED AND PROVIDED.

Drawing Number HE551495 -ACM -LSI -	Rev P04
Location ZN5_SW_Z_ZZ -DR -DC-0516	