

A1 in Northumberland: Morpeth to Ellingham

Scheme Number: TR010059

7.24.1 Applicant's Response to Deadline 5 and 5a Submissions - Appendix i Geomorphological Map

Rule 8(1)(c)

Planning Act 2008

Infrastructure Planning (Examination Procedure) Rules 2010

Infrastructure Planning

Planning Act 2008

**The Infrastructure Planning
(Examination Procedure) Rules
2010**

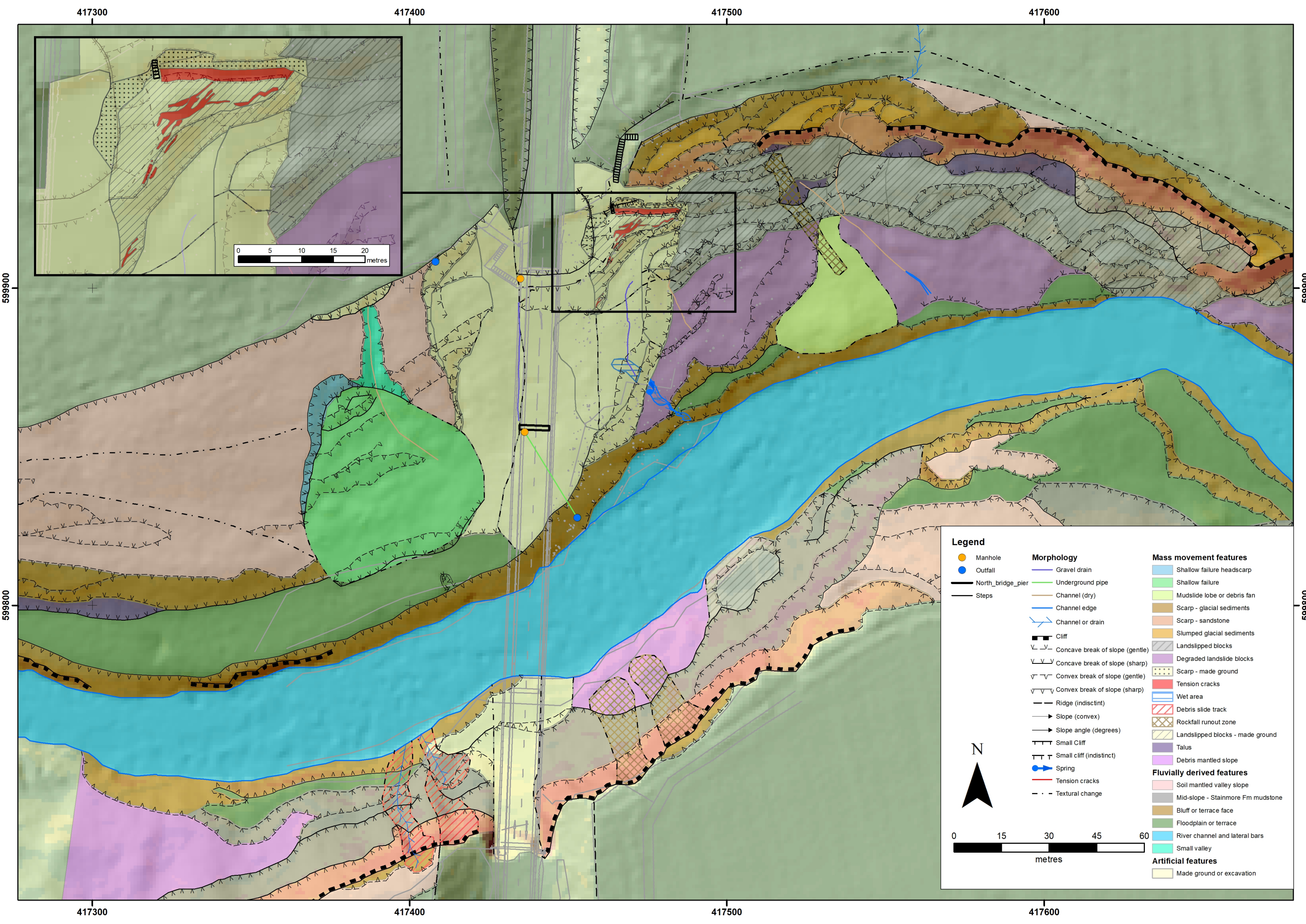
**The A1 in Northumberland: Morpeth to
Ellingham**

Development Consent Order 20[xx]

Appendix i Geomorphological Map

Rule Reference:	8(1)(c)
Planning Inspectorate Scheme Reference:	TR010059
Doc Reference:	7.24.1
Author:	A1 in Northumberland: Morpeth to Ellingham Project Team, Highways England

Version	Date	Status of Version
Rev 0	May 2021	Deadline 6



© Crown copyright 2021.

You may re-use this information (not including logos) free of charge in any format or medium, under the terms of the Open Government Licence. To view this licence:

visit www.nationalarchives.gov.uk/doc/open-government-licence/

write to the **Information Policy Team, The National Archives, Kew, London TW9 4DU**, or email

psi@nationalarchives.gsi.gov.uk.

This document is also available on our website at www.gov.uk/highways

If you have any enquiries about this document
A1inNorthumberland@highwaysengland.co.uk
or call **0300 470 4580***.