

FIGURE 12.8

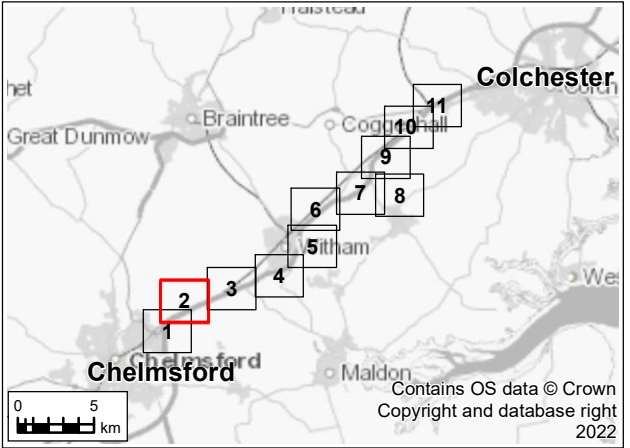
Legend

— Proposed Scheme

--- Operational Noise Study Area

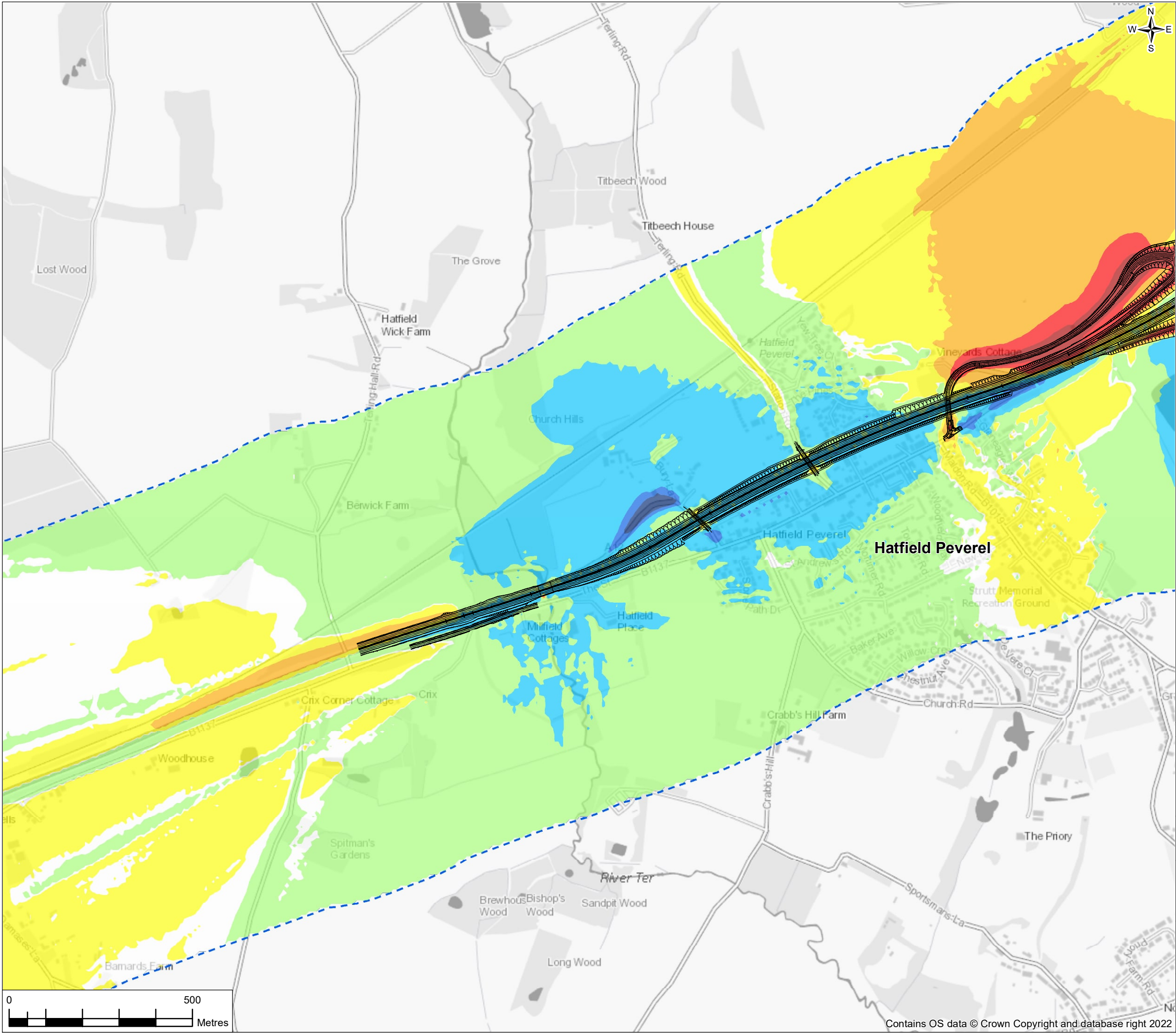
Short Term Noise Change $L_{A10,18h}$ dB for the Daytime

- <=-5.0dB
- 4.9 to -3.0dB
- 2.9 to -1dB
- 0.9 to -0.1dB
- 0dB
- 0.1 to 0.9dB
- 1.0 to 2.9dB
- 3.0 to 4.9 dB
- >=5dB



P01	26/07/22	For DCO application		AD	FR	RS	SG
Rev.	Rev. Date	Purpose of revision		Drawn	Check'd	Rev'd	Appr'd
Development Consent Order Drawing Number: TR010060/APP/6.2				APFP Regulation: Regulation 5(2)(a)			
Client <div><div></div><div><div>national</div><div>highways</div></div></div>							
Project <div>REGIONAL DELIVERY PARTNERSHIP</div> <div>A12 CHELMSFORD TO A120 WIDENING SCHEME</div>							
Drawing Title <div>ENVIRONMENTAL STATEMENT</div> <div>NOISE CHANGE CONTOUR MAP</div> <div>- OPENING YEAR 2027</div> <div>SHEET 2 OF 11</div>							
Drawing Status <div>S4 – SUITABLE FOR STAGE APPROVAL</div>							
Scale @ A3		1:10000			DO NOT SCALE		
Jacobs No.		B36601D1					
Client No.		HE551497					
Drawing Number		HE551497-JAC-LDC-SCHW-SK-GI-0130					
<div><div>© Copyright 2022 Jacobs U.K. Limited. The concepts and information contained in this document are the property of Jacobs. Use or copying of this document in whole or in part without the written permission of Jacobs constitutes an infringement of copyright.</div><div>Limitation: This drawing has been prepared on behalf of, and for the exclusive use of Jacobs' Client, and is subject to, and issued in accordance with, the provisions of the contract between Jacobs and the Client. Jacobs accepts no liability or responsibility whatsoever for, or in respect of, any use of, or reliance upon, this drawing by any third party.</div></div>							

FIGURE 12.8



Legend

Proposed Scheme

Operational Noise Study Area

Short Term Noise Change $L_{A10,18h}$ dB for the Daytime

- ≤ -5.0 dB
- 4.9 to -3.0dB
- 2.9 to -1dB
- 0.9 to -0.1dB
- 0dB
- 0.1 to 0.9dB
- 1.0 to 2.9dB
- 3.0 to 4.9 dB
- ≥ 5 dB

Colchester

Chelmsford

Contains OS data © Crown Copyright and database right 2022

P01	26/07/22	For DCO application	AD	FR	RS	SG
Rev.	Rev. Date	Purpose of revision	Drawn	Check'd	Rev'd	Appr'd
Development Consent Order Drawing Number: TR010060/APP/6.2			APFP Regulation: Regulation 5(2)(a)			
Client 						
Project REGIONAL DELIVERY PARTNERSHIP A12 CHELMSFORD TO A120 WIDENING SCHEME						
Drawing Title ENVIRONMENTAL STATEMENT NOISE CHANGE CONTOUR MAP - OPENING YEAR 2027 SHEET 3 OF 11						
Drawing Status S4 – SUITABLE FOR STAGE APPROVAL						
Scale @ A3		1:10000	DO NOT SCALE			
Jacobs No.		B36601D1	Rev P01			
Client No.		HE551497				
Drawing Number		HE551497-JAC-LDC-SCHW-SK-GI-0131				

© Copyright 2022 Jacobs U.K. Limited. The concepts and information contained in this document are the property of Jacobs. Use or copying of this document in whole or in part without the written permission of Jacobs constitutes an infringement of copyright. Limitation: This drawing has been prepared on behalf of, and for the exclusive use of Jacobs' Client, and is subject to, and issued in accordance with, the provisions of the contract between Jacobs and the Client. Jacobs accepts no liability or responsibility whatsoever for, or in respect of, any use of, or reliance upon, this drawing by any third party.

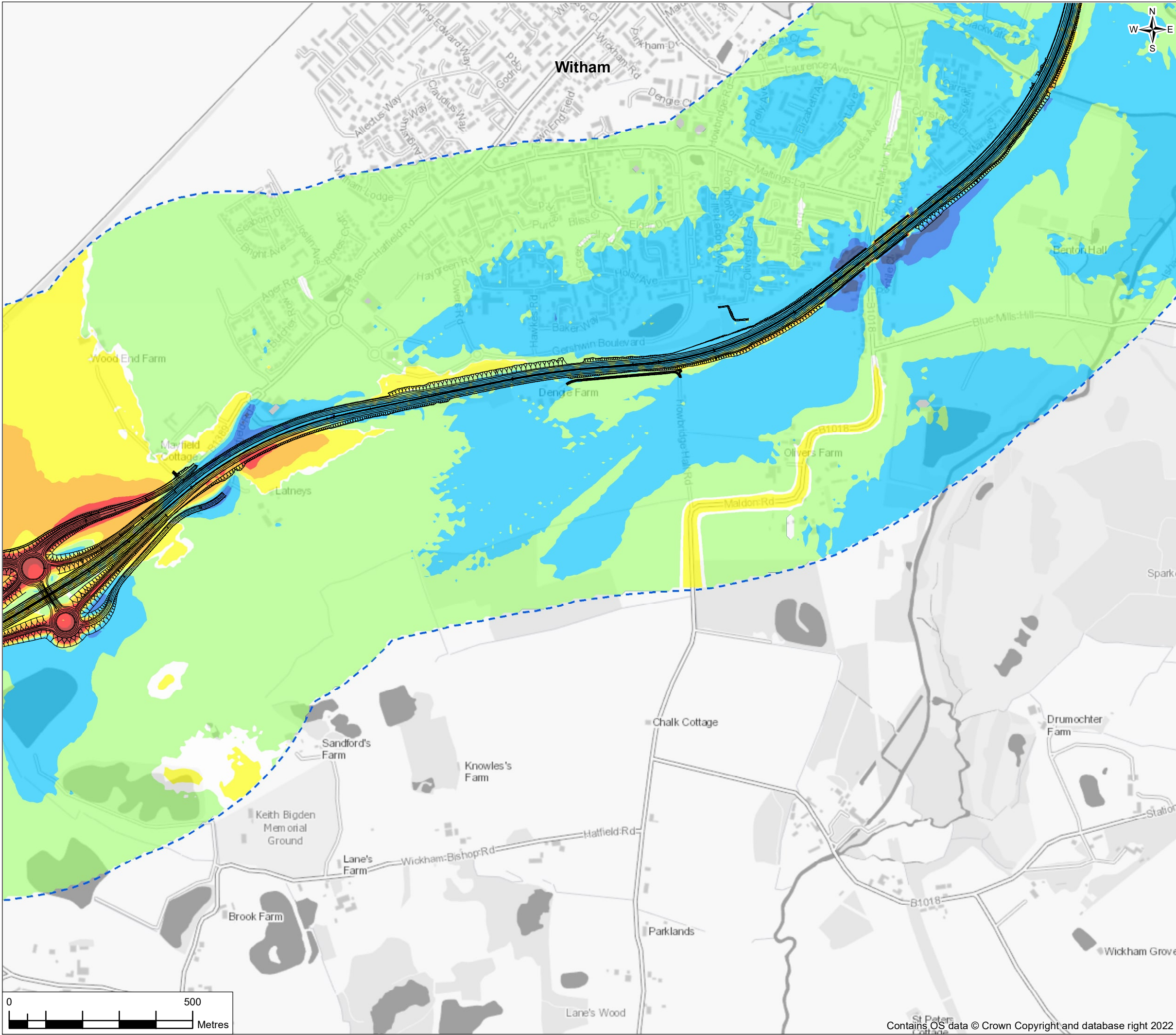


FIGURE 12.8

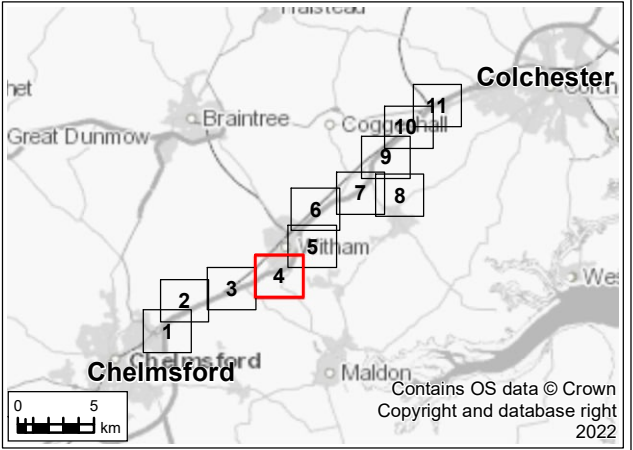
Legend

— Proposed Scheme

--- Operational Noise Study Area

Short Term Noise Change $L_{A10,18h}$ dB for the Daytime

- <=-5.0dB
- 4.9 to -3.0dB
- 2.9 to -1dB
- 0.9 to -0.1dB
- 0dB
- 0.1 to 0.9dB
- 1.0 to 2.9dB
- 3.0 to 4.9 dB
- >=5dB



P01	26/07/22	For DCO application		AD	FR	RS	SG
Rev.	Rev. Date	Purpose of revision		Drawn	Check'd	Rev'd	Appr'd
Development Consent Order Drawing Number: TR010060/APP/6.2				APFP Regulation: Regulation 5(2)(a)			
Client <div></div>							
Project REGIONAL DELIVERY PARTNERSHIP A12 CHELMSFORD TO A120 WIDENING SCHEME							
Drawing Title ENVIRONMENTAL STATEMENT NOISE CHANGE CONTOUR MAP - OPENING YEAR 2027 SHEET 4 OF 11							
Drawing Status S4 – SUITABLE FOR STAGE APPROVAL							
Scale @ A3		1:10000			DO NOT SCALE		
Jacobs No.		B36601D1					
Client No.		HE551497			Rev P01		
Drawing Number HE551497-JAC-LDC-SCHW-SK-GI-0132							
© Copyright 2022 Jacobs U.K. Limited. The concepts and information contained in this document are the property of Jacobs. Use or copying of this document in whole or in part without the written permission of Jacobs constitutes an infringement of copyright. Limitation: This drawing has been prepared on behalf of, and for the exclusive use of Jacobs' Client, and is subject to, and issued in accordance with, the provisions of the contract between Jacobs and the Client. Jacobs accepts no liability or responsibility whatsoever for, in respect of any use of, or reliance upon, this drawing by any third party.							

© Copyright 2022 Jacobs U.K. Limited. The concepts and information contained in this document are the property of Jacobs. Use or copying of this document in whole or in part without the written permission of Jacobs constitutes an infringement of copyright. Limitation: This drawing has been prepared on behalf of, and for the exclusive use of Jacobs' Client, and is subject to, and issued in accordance with, the provisions of the contract between Jacobs and the Client. Jacobs accepts no liability or responsibility whatsoever for, or in respect of, any use of, or reliance upon, this drawing by any third party.

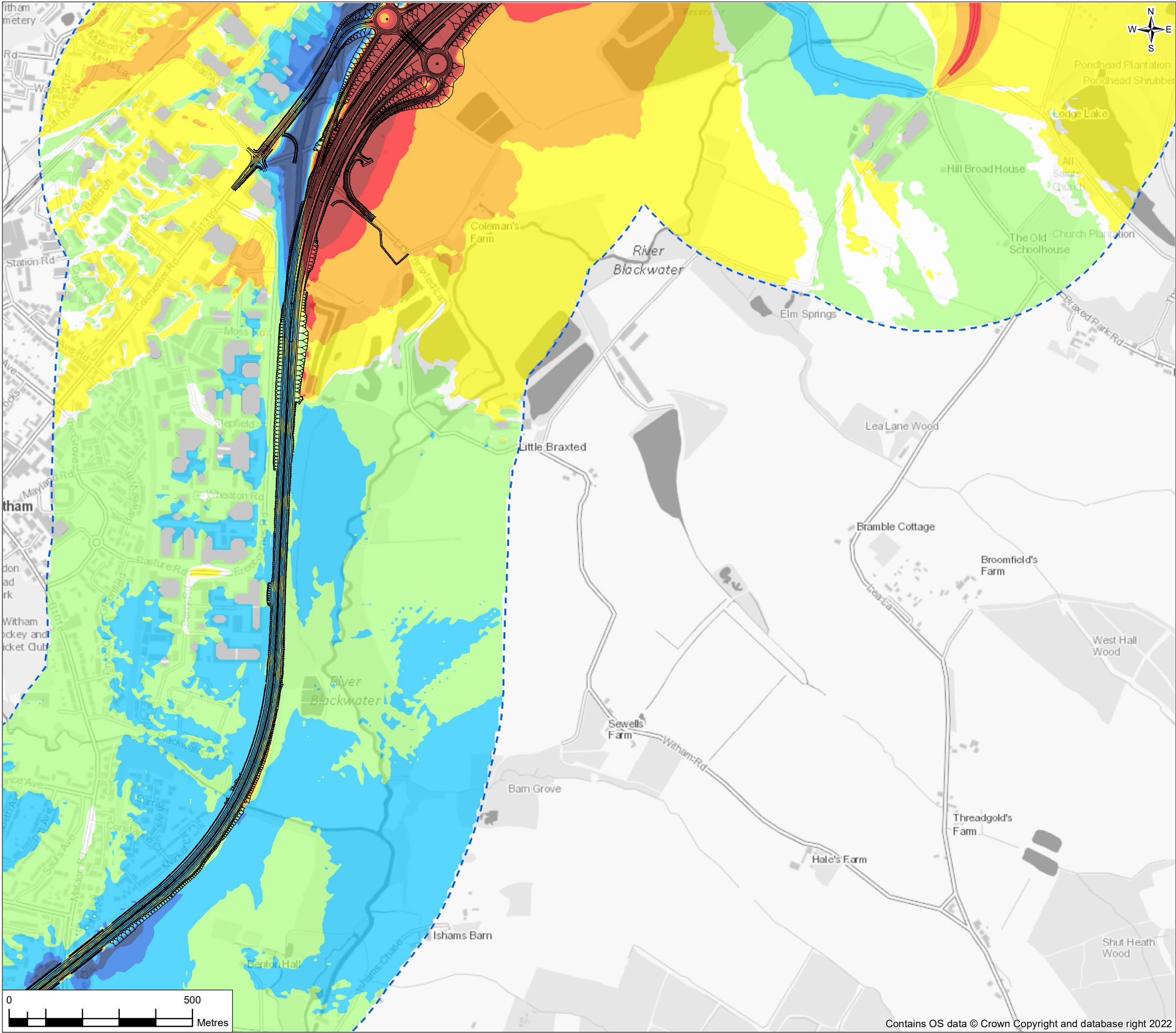


FIGURE 12.8

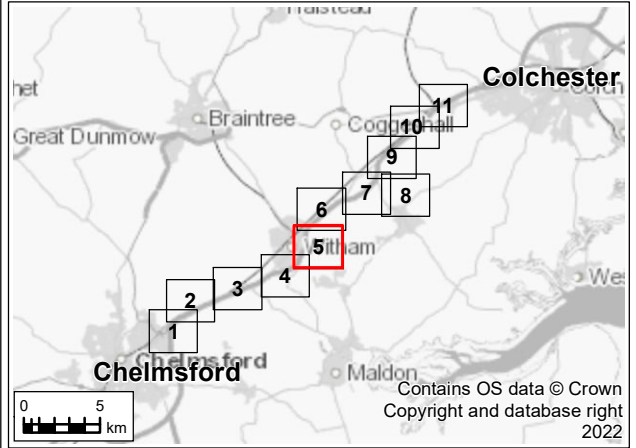
Legend

— Proposed Scheme

--- Operational Noise Study Area

Short Term Noise Change $L_{A10,18h}$ dB for the Daytime

- ≤ -5.0dB
- 4.9 to -3.0dB
- 2.9 to -1dB
- 0.9 to -0.1dB
- 0dB
- 0.1 to 0.9dB
- 1.0 to 2.9dB
- 3.0 to 4.9 dB
- ≥ 5dB




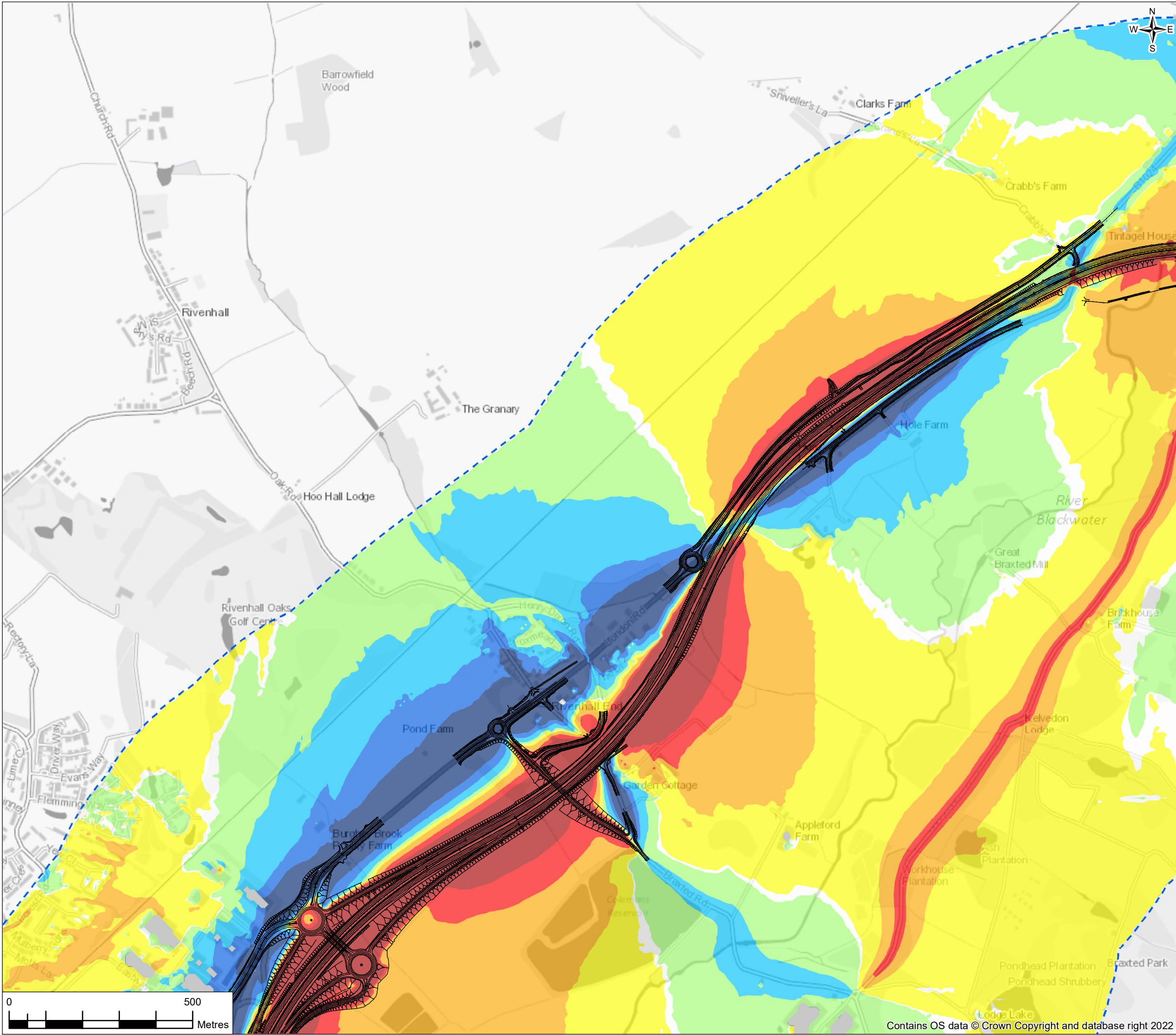
P01	26/07/22	For DCO application		AD	FR	RS	SG
Rev.	Rev. Date	Purpose of revision		Drawn	Check'd	Rev'd	Appr'd
Development Consent Order Drawing Number: TR010060/APP/6.2				APFP Regulation: Regulation 5(2)(a)			
Client							
Project		REGIONAL DELIVERY PARTNERSHIP A12 CHELMSFORD TO A120 WIDENING SCHEME					
Drawing Title		ENVIRONMENTAL STATEMENT NOISE CHANGE CONTOUR MAP - OPENING YEAR 2027 SHEET 5 OF 11					
Drawing Status		S4 – SUITABLE FOR STAGE APPROVAL					
Scale @ A3		1:10000				DO NOT SCALE	
Jacobs No.		B36601D1					
Client No.		HE551497					
Drawing Number		HE551497-JAC-LDC-SCHW-SK-GI-0484					
<small>© Copyright 2022 Jacobs U.K. Limited. The concepts and information contained in this document are the property of Jacobs. Use or copying of this document in whole or in part without the written permission of Jacobs constitutes an infringement of copyright. Limitation: This drawing has been prepared on behalf of, and for the exclusive use of Jacobs' Client, and is subject to, and issued in accordance with, the provisions of the contract between Jacobs and the Client. Jacobs accepts no liability or responsibility whatsoever for, or in respect of, any use of, or reliance upon, this drawing by any third party.</small>							

FIGURE 12.8



Legend

— Proposed Scheme

--- Operational Noise Study Area

Short Term Noise Change $L_{A10,18h}$ dB for the Daytime

- <=-5.0dB
- 4.9 to -3.0dB
- 2.9 to -1dB
- 0.9 to -0.1dB
- 0dB
- 0.1 to 0.9dB
- 1.0 to 2.9dB
- 3.0 to 4.9 dB
- >=5dB

P01	26/07/22	For DCO application	AD	FR	RS	SG
Rev.	Rev. Date	Purpose of revision	Drawn	Check'd	Rev'd	Appr'd
Development Consent Order Drawing Number: TR010060/APP/6.2			APFP Regulation: Regulation 5(2)(a)			
Client						
Project						
REGIONAL DELIVERY PARTNERSHIP A12 CHELMSFORD TO A120 WIDENING SCHEME						
Drawing Title						
ENVIRONMENTAL STATEMENT NOISE CHANGE CONTOUR MAP - OPENING YEAR 2027 SHEET 6 OF 11						
Drawing Status						
S4 – SUITABLE FOR STAGE APPROVAL						
Scale @ A3		1:10000		DO NOT SCALE		
Jacobs No.		B36601D1		Rev P01		
Client No.		HE551497				
Drawing Number						
HE551497-JAC-LDC-SCHW-SK-GI-0485						

© Copyright 2022 Jacobs U.K. Limited. The concepts and information contained in this document are the property of Jacobs. Use or copying of this document in whole or in part without the written permission of Jacobs constitutes an infringement of copyright. Limitation: This drawing has been prepared on behalf of, and for the exclusive use of Jacobs' Client, and is subject to, and issued in accordance with, the provisions of the contract between Jacobs and the Client. Jacobs accepts no liability or responsibility whatsoever for, or in respect of, any use of, or reliance upon, this drawing by any third party.

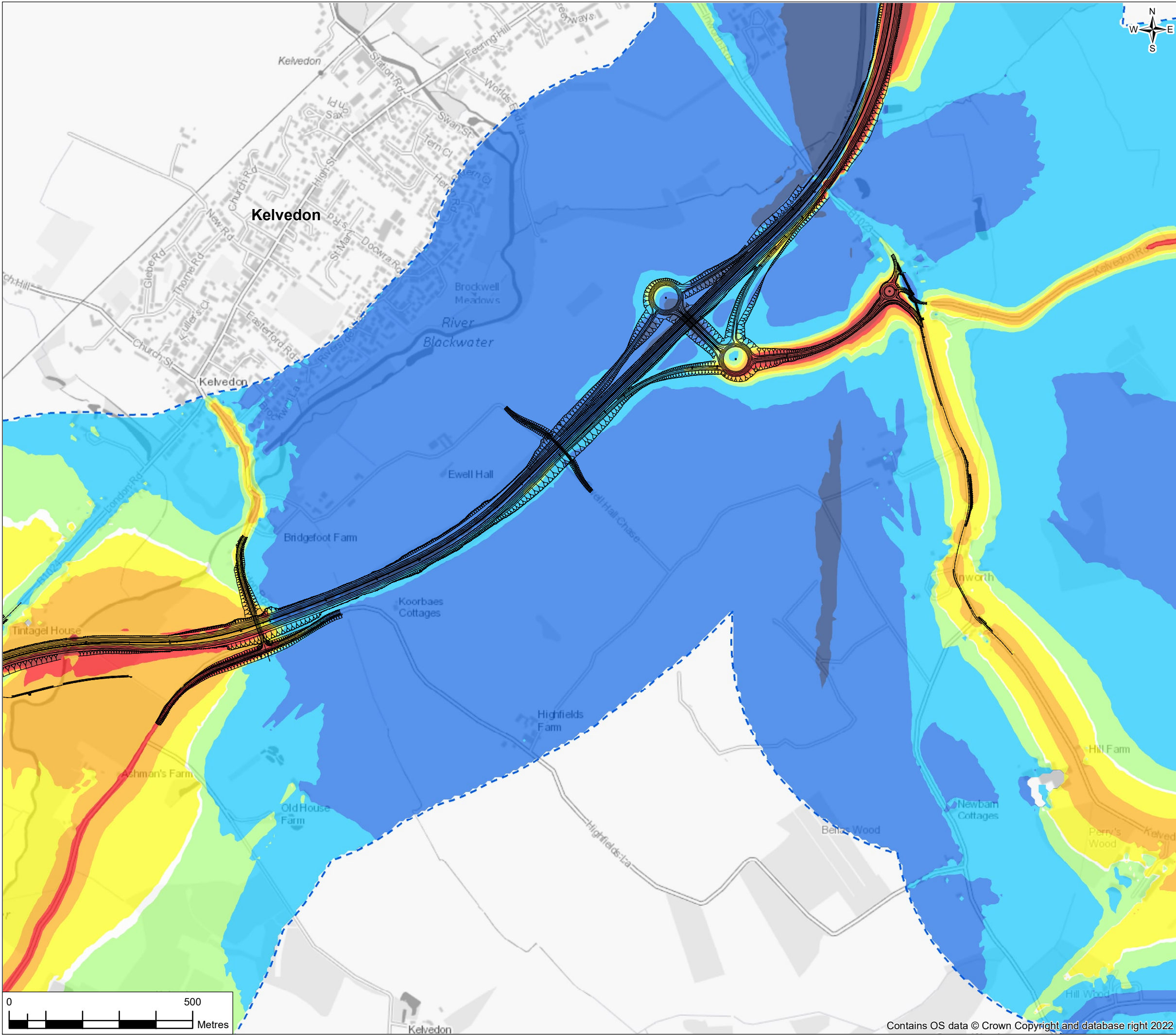


FIGURE 12.8

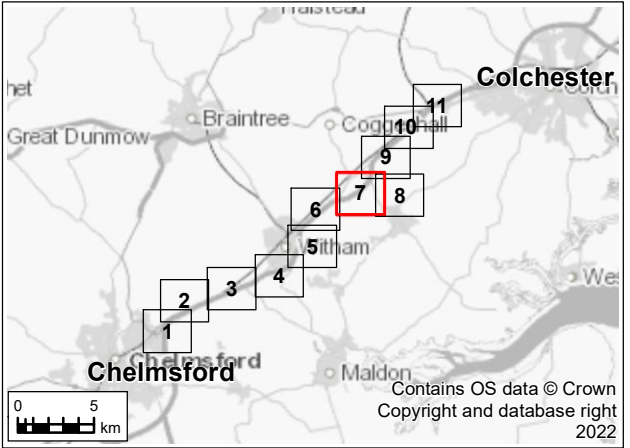
Legend

— Proposed Scheme

--- Operational Noise Study Area

Short Term Noise Change $L_{A10,18h}$ dB for the Daytime

- <=-5.0dB
- 4.9 to -3.0dB
- 2.9 to -1dB
- 0.9 to -0.1dB
- 0dB
- 0.1 to 0.9dB
- 1.0 to 2.9dB
- 3.0 to 4.9 dB
- >=5dB



P01	26/07/22	For DCO application		AD	FR	RS	SG
Rev.	Rev. Date	Purpose of revision		Drawn	Check'd	Rev'd	Appr'd
Development Consent Order Drawing Number: TR010060/APP/6.2				APFP Regulation: Regulation 5(2)(a)			
Client							
Project		REGIONAL DELIVERY PARTNERSHIP A12 CHELMSFORD TO A120 WIDENING SCHEME					
Drawing Title		ENVIRONMENTAL STATEMENT NOISE CHANGE CONTOUR MAP - OPENING YEAR 2027 SHEET 7 OF 11					
Drawing Status		S4 – SUITABLE FOR STAGE APPROVAL					
Scale @ A3		1:10000				DO NOT SCALE	
Jacobs No.		B36601D1					
Client No.		HE551497				Rev	P01
Drawing Number		HE551497-JAC-LDC-SCHW-SK-GI-0486					

© Copyright 2022 Jacobs U.K. Limited. The concepts and information contained in this document are the property of Jacobs. Use or copying of this document in whole or in part without the written permission of Jacobs constitutes an infringement of copyright. The limitation: This drawing has been prepared on behalf of, and for the exclusive use of Jacobs' Client, and is subject to, and issued in accordance with, the provisions of the contract between Jacobs and the Client. Jacobs accepts no liability or responsibility whatsoever for, in respect of, any use of, or reliance upon, this drawing by any third party.

© Copyright 2022 Jacobs U.K. Limited. The concepts and information contained in this document are the property of Jacobs. Use or copying of this document in whole or in part without the written permission of Jacobs constitutes an infringement of copyright. Limitation: This drawing has been prepared on behalf of, and for the exclusive use of Jacobs' Client, and is subject to, and issued in accordance with, the provisions of the contract between Jacobs and the Client. Jacobs accepts no liability or responsibility whatsoever for, or in respect of, any use of, or reliance upon, this drawing by any third party.

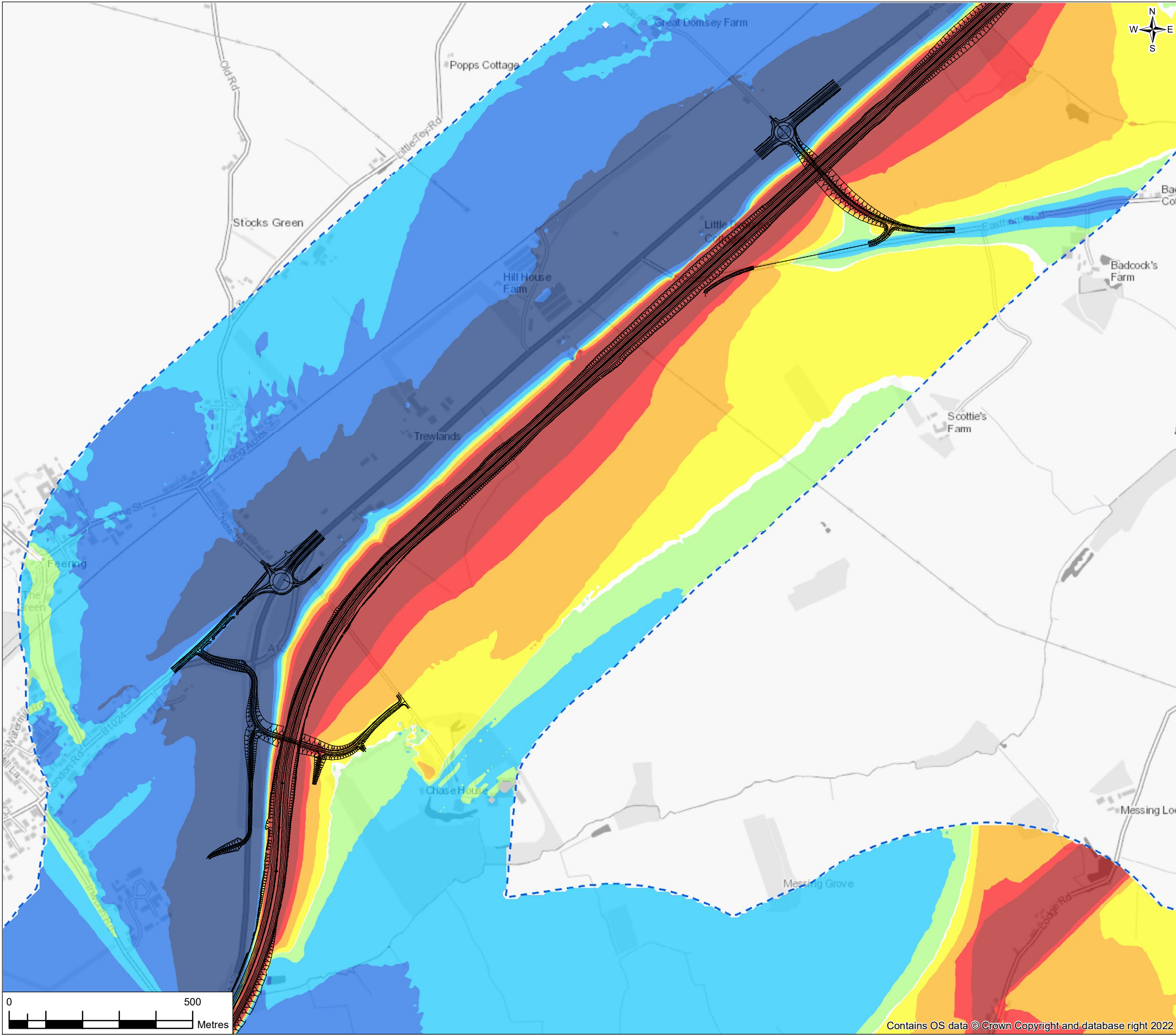


FIGURE 12.8

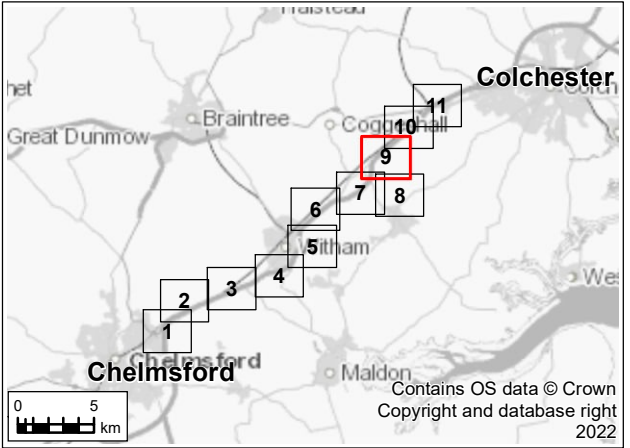
Legend


— Proposed Scheme

--- Operational Noise Study Area

Short Term Noise Change $L_{A10,18h}$ dB for the Daytime

- ≤ -5.0 dB
- 4.9 to -3.0dB
- 2.9 to -1dB
- 0.9 to -0.1dB
- 0dB
- 0.1 to 0.9dB
- 1.0 to 2.9dB
- 3.0 to 4.9 dB
- ≥ 5 dB



P01	26/07/22	For DCO application		AD	FR	RS	SG
Rev.	Rev. Date	Purpose of revision		Drawn	Check'd	Rev'd	Appr'd
Development Consent Order Drawing Number: TR010060/APP/6.2				APFP Regulation: Regulation 5(2)(a)			
<div>Client</div> <div></div>							
<div>Project</div> <div>REGIONAL DELIVERY PARTNERSHIP A12 CHELMSFORD TO A120 WIDENING SCHEME</div>							
<div>Drawing Title</div> <div>ENVIRONMENTAL STATEMENT NOISE CHANGE CONTOUR MAP - OPENING YEAR 2027 SHEET 9 OF 11</div>							
<div>Drawing Status</div> <div>S4 – SUITABLE FOR STAGE APPROVAL</div>							
Scale @ A3		1:10000				DO NOT SCALE	
Jacobs No.		B36601D1					
Client No.		HE551497				Rev	P01
<div>Drawing Number</div> <div>HE551497-JAC-LDC-SCHW-SK-GI-0488</div>							

© Copyright 2022 Jacobs U.K. Limited. The concepts and information contained in this document are the property of Jacobs. Use or copying of this document in whole or in part without the written permission of Jacobs constitutes an infringement of copyright. Limitation: This drawing has been prepared on behalf of, and for the exclusive use of Jacobs' Client, and is subject to, and issued in accordance with, the provisions of the contract between Jacobs and the Client. Jacobs accepts no liability or responsibility whatsoever for, or in respect of, any use of, or reliance upon, this drawing by any third party.

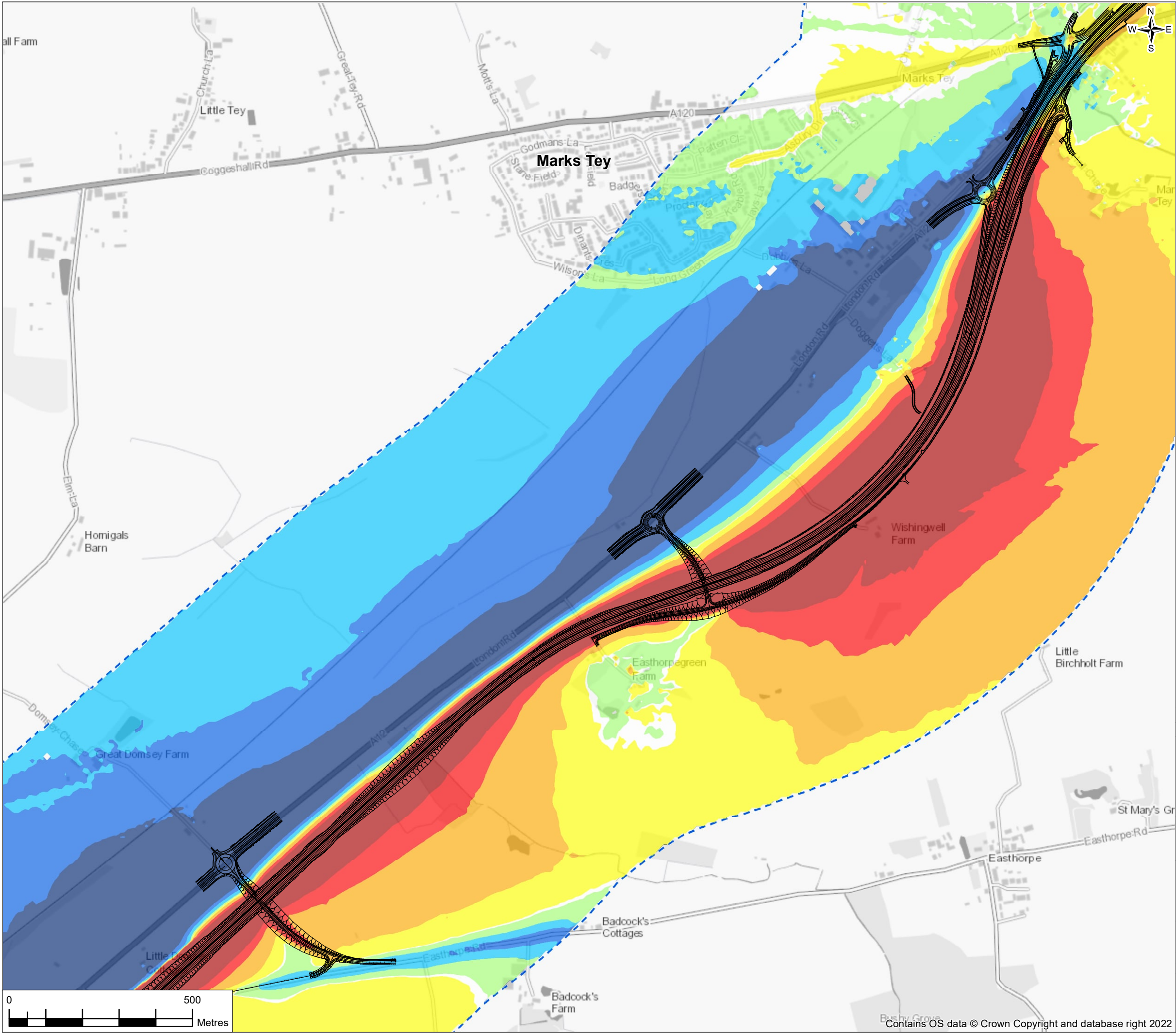


FIGURE 12.8

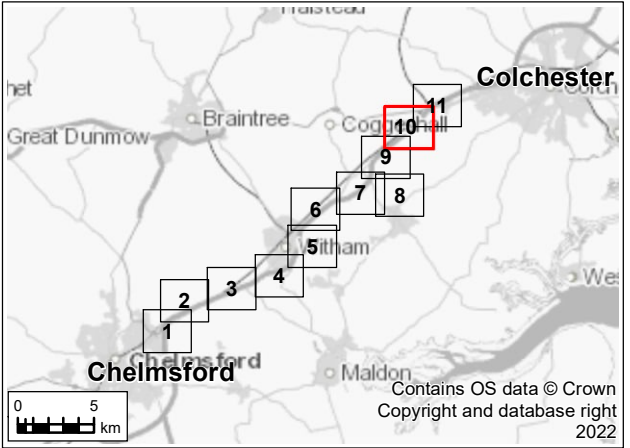
Legend


— Proposed Scheme

--- Operational Noise Study Area

Short Term Noise Change $L_{A10,18h}$ dB for the Daytime

- <=-5.0dB
- 4.9 to -3.0dB
- 2.9 to -1dB
- 0.9 to -0.1dB
- 0dB
- 0.1 to 0.9dB
- 1.0 to 2.9dB
- 3.0 to 4.9 dB
- >=5dB



P01	26/07/22	For DCO application		AD	FR	RS	SG
Rev.	Rev. Date	Purpose of revision		Drawn	Check'd	Rev'd	Appr'd
Development Consent Order Drawing Number: TR010060/APP/6.2				APFR Regulation: Regulation 5(2)(a)			
<div>Client</div> <div></div>							
<div>Project</div> <div>REGIONAL DELIVERY PARTNERSHIP A12 CHELMSFORD TO A120 WIDENING SCHEME</div>							
<div>Drawing Title</div> <div>ENVIRONMENTAL STATEMENT NOISE CHANGE CONTOUR MAP - OPENING YEAR 2027 SHEET 10 OF 11</div>							
<div>Drawing Status</div> <div>S4 – SUITABLE FOR STAGE APPROVAL</div>							
Scale @ A3		1:10000			DO NOT SCALE		
Jacobs No.		B36601D1					
Client No.		HE551497			Rev P01		
<div>Drawing Number</div> <div>HE551497-JAC-LDC-SCHW-SK-GI-0489</div>							

© Copyright 2022 Jacobs U.K. Limited. The concepts and information contained in this document are the property of Jacobs. Use or copying of this document in whole or in part without the written permission of Jacobs constitutes an infringement of copyright. Limitation: This drawing has been prepared on behalf of, and for the exclusive use of Jacobs' Client, and is subject to, and issued in accordance with, the provisions of the contract between Jacobs and the Client. Jacobs accepts no liability or responsibility whatsoever for, or in respect of, any use of, or reliance upon, this drawing by any third party.

