

1. This zone of theoretical visibility (ZTV) has been prepared in accordance with the methodology set out in Appendix 8.6 of the Environmental Statement [TR010060/APP/6.3].
2. The ZTV is generated using computer program ArcGIS Pro 2.8.1 and is based on DEFRA 2m LiDAR Composite digital terrain model (DTM).
3. The ZTV is based upon bare earth ground model and therefore only takes account of the visual screening provided by existing topography. The ZTV does not take account of surface features, such as buildings and vegetation, which could also provide screening.
4. The following have been added to illustrate existing screening features within the landscape:
  - Buildings, based upon data obtained from OS MasterMap.
  - Blocks of trees and woodland identified in the National Forest Inventory (NFI). The NFI data does not include all trees, but is focussed on woodland of at least 0.5ha and minimum 20m width.
5. The ZTV has been modelled with a viewer height of 1.7m.
6. The ZTV results have been calculated within the extent of this figure. The limit of the ZTV shown on this figure provides an indication only of the theoretical maximum extent to which the proposals may be visible from within this area.
7. Elevations used for target points for the ZTV to represent high-sided vehicles (HGVs), lighting columns and gantries along the proposed scheme are indicative only. Target points 4.5m above the level of the proposed carriageway have been used to represent HGVs. In addition, target points 12m above the level of the proposed carriageway have been used to represent the height of lighting columns at major proposed junctions and the height of gantries where applicable.
8. Potential refinements of the proposed scheme may result in changes to the vertical or horizontal alignment, and therefore the ZTV.
9. The ZTV does not account for any variation that may result from the limits of deviation applied to the proposed scheme. The vertical and horizontal alignment, and the location of lighting and gantries, has been based on set alignment and design data.
10. The field of view for the viewpoints is 90 degrees. Viewpoint symbols are indicative only and do not represent the exact field or direction of view.

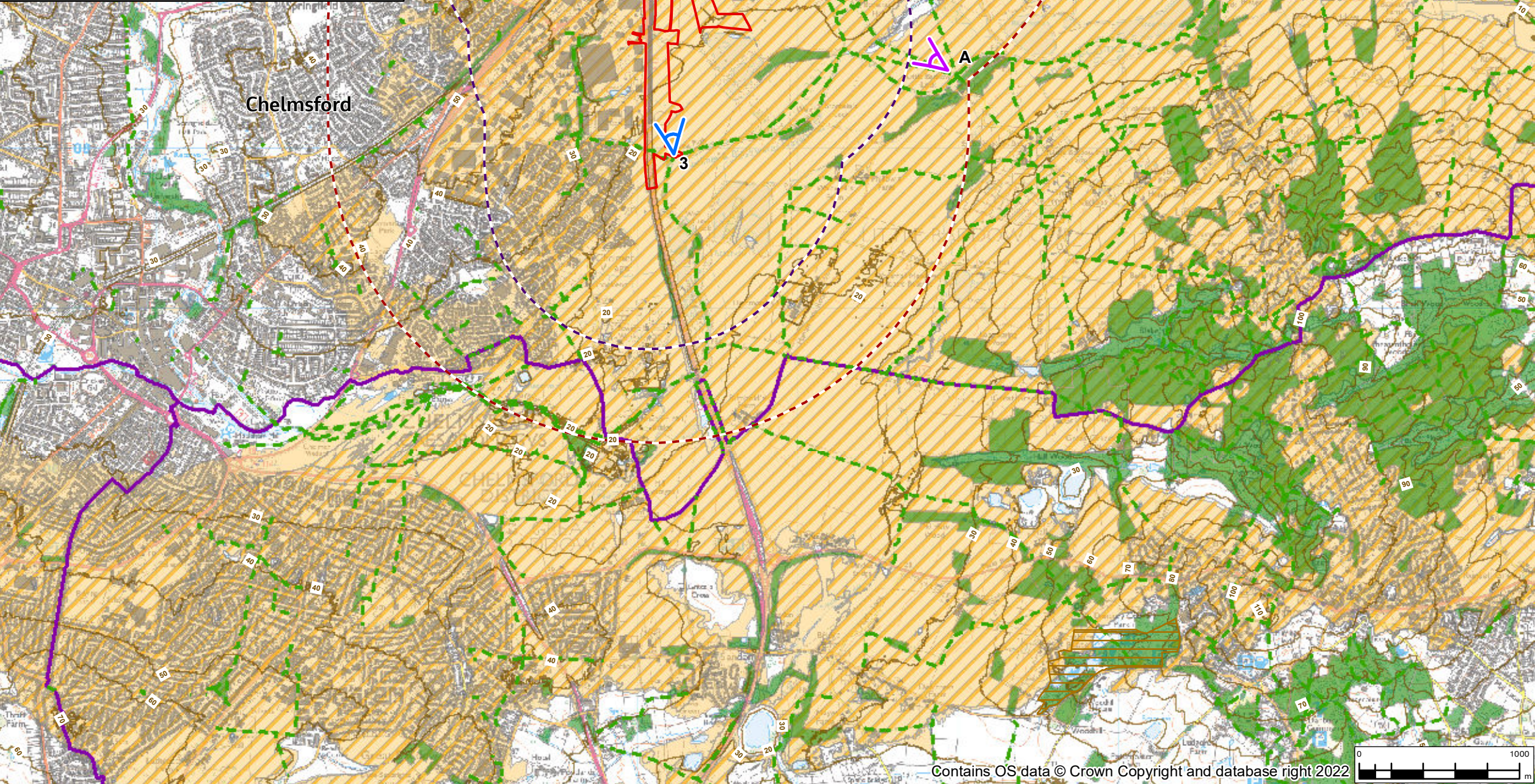


FIGURE 8.3

Legend

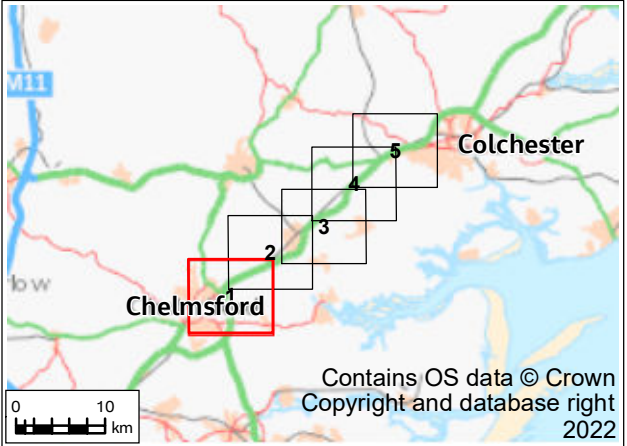
- Order Limits
- Proposed scheme
- Study area:
  - 1km buffer from Order Limits
  - 2km around proposed scheme centreline
- Public right of way
- National cycle route
- Regional cycle route
- Country park
- Contours at 10m intervals
- Theoretical visibility of HGV target points only
- Theoretical visibility of lighting column and gantry target points only


Existing screening features – see note 4

- Blocks of trees and woodland
- Buildings

Viewpoints assessed within Chapter 8: Landscape and visual [TR010060/APP/6.1]

- Representative viewpoints (1 - 35) - approximate position, extent and direction of view
- Representative viewpoint and photomontage location (2, 7, 11a, 22, 24 and 32) - approximate position, extent and direction of view
- Longer distance illustrative viewpoints (A - E) - approximate position, extent and direction of view



P01	19/07/22	For DCO application		ML	HB	HM	SG
Rev.	Rev. Date	Purpose of revision		Drawn	Check'd	Rev'd	Appr'd
Development Consent Order Drawing Number: TR010060/APP/6.2				APFP Regulation: APFP Regulation 5(2)(a)			
Client							
<div>national highways</div>							
Project							
REGIONAL DELIVERY PARTNERSHIP A12 CHELMSFORD TO A120 WIDENING SCHEME							
Drawing Title							
ENVIRONMENTAL STATEMENT ZONE OF THEORETICAL VISIBILITY AND VIEWPOINTS - BARE EARTH SHEET 1 OF 5							
Drawing Status							
S4 – SUITABLE FOR STAGE APPROVAL							
Scale @ A3		1:30000			DO NOT SCALE  Rev P01		
Jacobs No.		B36601D1					
Client No.		HE551497					
Drawing Number							
HE551497-JAC-LDC-SCHW-SK-GI-0081							

© Copyright 2021 Jacobs U.K. Limited. The concepts and information contained in this document are the property of Jacobs. Use or copying of this document in whole or in part without the written permission of Jacobs constitutes an infringement of copyright.

Limitation: This drawing has been prepared on behalf of, and for the exclusive use of Jacobs' Client, and is subject to, and issued in accordance with, the provisions of the contract between Jacobs and the Client. Jacobs accepts no liability or responsibility whatsoever for, or in respect of any use, or reliance upon, this drawing by any third party.

© Copyright 2021 Jacobs UK Limited. The concepts and information contained in this document are the property of Jacobs. Use or copying of this document in whole or in part without the written permission of Jacobs constitutes an infringement of copyright. Limitation: This drawing has been prepared on behalf of, and for the exclusive use of Jacobs' Client, and is subject to, and issued in accordance with, the provisions of the contract between Jacobs and the Client. Jacobs accepts no liability or responsibility whatsoever for, or in respect of, any use of, or reliance upon, this drawing by any third party.



1. This zone of theoretical visibility (ZTV) has been prepared in accordance with the methodology set out in Appendix 8.6 of the Environmental Statement [TR010060/APP/6.3].

2. The ZTV is generated using computer program ArcGIS Pro 2.8.1 and is based on DEFRA 2m LiDAR Composite digital terrain model (DTM).

3. The ZTV is based upon bare earth ground model and therefore only takes account of the visual screening provided by existing topography. The ZTV does not take account of surface features, such as buildings and vegetation, which could also provide screening.

4. The following have been added to illustrate existing screening features within the landscape:

- Buildings, based upon data obtained from OS MasterMap.
- Blocks of trees and woodland identified in the National Forest Inventory (NFI). The NFI data does not include all trees, but is focussed on woodland of at least 0.5ha and minimum 20m width.

5. The ZTV has been modelled with a viewer height of 1.7m.

6. The ZTV results have been calculated within the extent of this figure. The limit of the ZTV shown on this figure provides an indication only of the theoretical maximum extent to which the proposals may be visible from within this area.

7. Elevations used for target points for the ZTV to represent high-sided vehicles (HGVs), lighting columns and gantries along the proposed scheme are indicative only. Target points 4.5m above the level of the proposed carriageway have been used to represent HGVs. In addition, target points 12m above the level of the proposed carriageway have been used to represent the height of lighting columns at major proposed junctions and the height of gantries where applicable.

8. Potential refinements of the proposed scheme may result in changes to the vertical or horizontal alignment, and therefore the ZTV.

9. The ZTV does not account for any variation that may result from the limits of deviation applied to the proposed scheme. The vertical and horizontal alignment, and the location of lighting and gantries, has been based on set alignment and design data.

10. The field of view for the viewpoints is 90 degrees. Viewpoint symbols are indicative only and do not represent the exact field or direction of view.

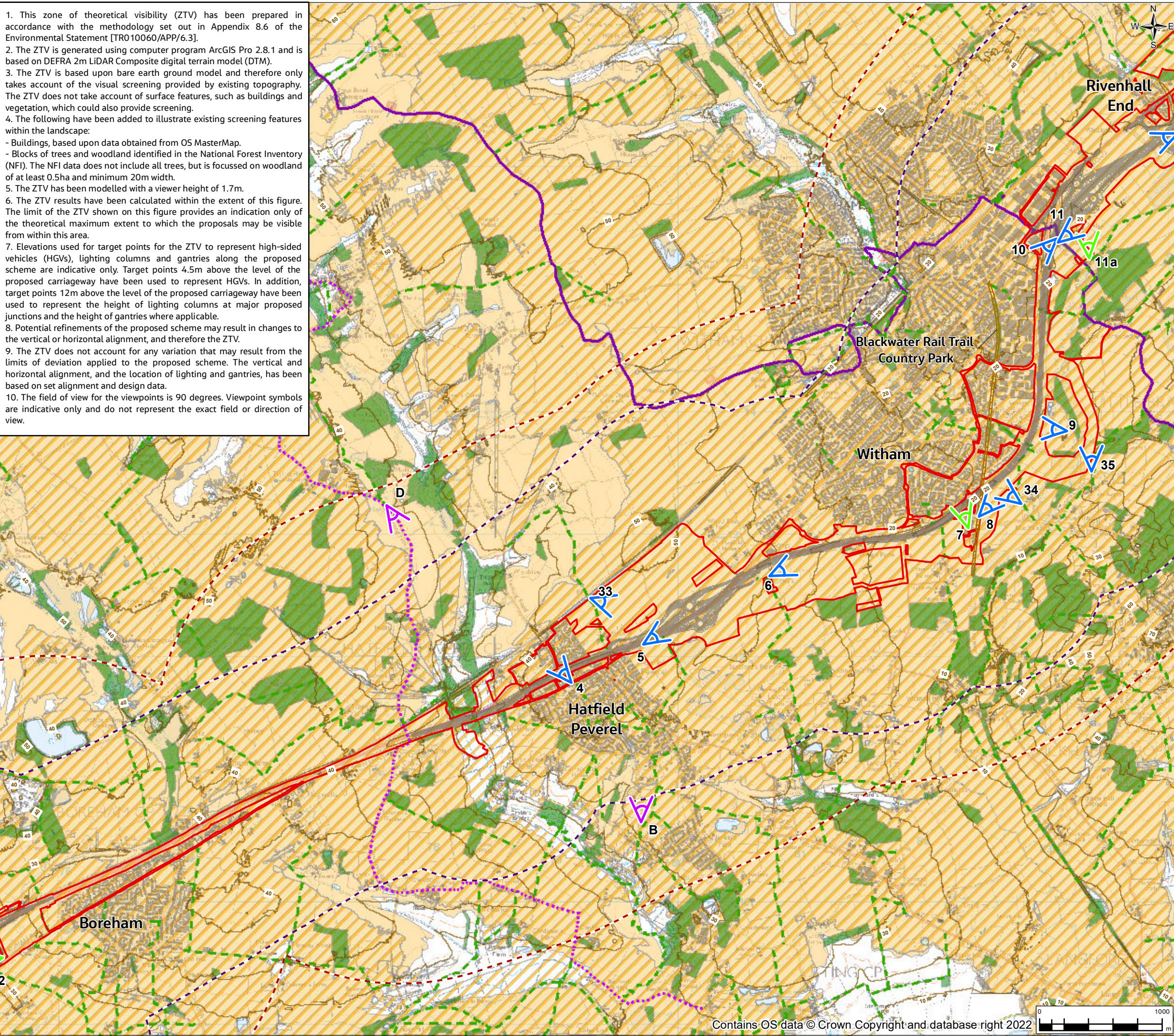


FIGURE 8.3

Legend

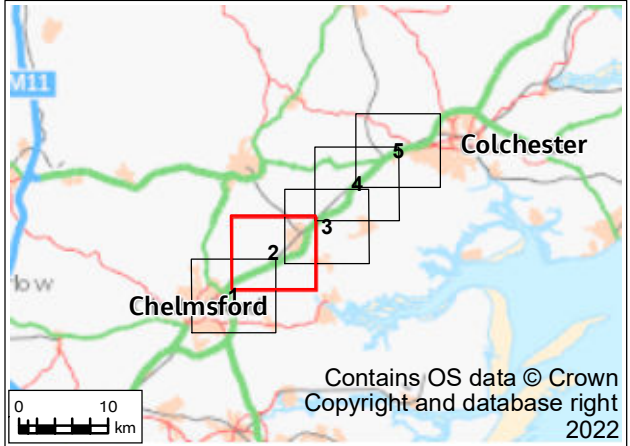
- Order Limits
- Proposed scheme
- Study area:
  - 1km buffer from Order Limits
  - 2km around proposed scheme centreline
- Public right of way
- National cycle route
- Regional cycle route
- Country park
- Contours at 10m intervals
- Theoretical visibility of HGV target points only
- Theoretical visibility of lighting column and gantry target points only


Existing screening features – see note 4

- Blocks of trees and woodland
- Buildings

Viewpoints assessed within Chapter 8: Landscape and visual [TR010060/APP/6.1]

- Representative viewpoints (1 - 35) - approximate position, extent and direction of view
- Representative viewpoint and photomontage location (2, 7, 11a, 22, 24 and 32) - approximate position, extent and direction of view
- Longer distance illustrative viewpoints (A - E) - approximate position, extent and direction of view



P01	19/07/22	For DCO application			ML	HB	HM	SG
Rev.	Rev. Date	Purpose of revision			Drawn	Check'd	Rev'd	Appr'd
Development Consent Order Drawing Number: TR010060/APP/6.2					APFP Regulation: APFP Regulation 5(2)(a)			
Client								
<div>national highways</div>								
Project								
REGIONAL DELIVERY PARTNERSHIP A12 CHELMSFORD TO A120 WIDENING SCHEME								
Drawing Title								
ENVIRONMENTAL STATEMENT ZONE OF THEORETICAL VISIBILITY AND VIEWPOINTS - BARE EARTH SHEET 2 OF 5								
Drawing Status								
S4 – SUITABLE FOR STAGE APPROVAL								
Scale @ A3		1:30000			DO NOT SCALE  Rev P01			
Jacobs No.		B36601D1						
Client No.		HE551497						
Drawing Number								
HE55 1497-JAC-LDC-SCHW-SK-GI-0082								

© Copyright 2021 Jacobs U.K. Limited. The concepts and information contained in this document are the property of Jacobs. Use or copying of this document in whole or in part without the written permission of Jacobs constitutes an infringement of copyright.

Limitation: This drawing has been prepared on behalf of, and for the exclusive use of Jacobs' Client, and is subject to, and issued in accordance with, the provisions of the contract between Jacobs and the Client. Jacobs accepts no liability or responsibility whatsoever for, or in respect of, any use of, or reliance upon, this drawing by any third party.

© Copyright 2021 Jacobs UK Limited. The concepts and information contained in this document are the property of Jacobs. Use or copying of this document in whole or in part without the written permission of Jacobs constitutes an infringement of copyright. Limitation: This drawing has been prepared on behalf of, and for the exclusive use of Jacobs' Client, and is subject to, and issued in accordance with, the provisions of the contract between Jacobs and the Client. Jacobs accepts no liability or responsibility whatsoever for, or in respect of, any use of, or reliance upon, this drawing by any third party.



1. This zone of theoretical visibility (ZTV) has been prepared in accordance with the methodology set out in Appendix 8.6 of the Environmental Statement [TR010060/APP/6.3].
2. The ZTV is generated using computer program ArcGIS Pro 2.8.1 and is based on DEFRA 2m LiDAR Composite digital terrain model (DTM).
3. The ZTV is based upon bare earth ground model and therefore only takes account of the visual screening provided by existing topography. The ZTV does not take account of surface features, such as buildings and vegetation, which could also provide screening.
4. The following have been added to illustrate existing screening features within the landscape:
- Buildings, based upon data obtained from OS MasterMap.
  - Blocks of trees and woodland identified in the National Forest Inventory (NFI). The NFI data does not include all trees, but is focussed on woodland of at least 0.5ha and minimum 20m width.
5. The ZTV has been modelled with a viewer height of 1.7m.
6. The ZTV results have been calculated within the extent of this figure. The limit of the ZTV shown on this figure provides an indication only of the theoretical maximum extent to which the proposals may be visible from within this area.
7. Elevations used for target points for the ZTV to represent high-sided vehicles (HGVs), lighting columns and gantries along the proposed scheme are indicative only. Target points 4.5m above the level of the proposed carriageway have been used to represent HGVs. In addition, target points 12m above the level of the proposed carriageway have been used to represent the height of lighting columns at major proposed junctions and the height of gantries where applicable.
8. Potential refinements of the proposed scheme may result in changes to the vertical or horizontal alignment, and therefore the ZTV.
9. The ZTV does not account for any variation that may result from the limits of deviation applied to the proposed scheme. The vertical and horizontal alignment, and the location of lighting and gantries, has been based on set alignment and design data.
10. The field of view for the viewpoints is 90 degrees. Viewpoint symbols are indicative only and do not represent the exact field or direction of view.

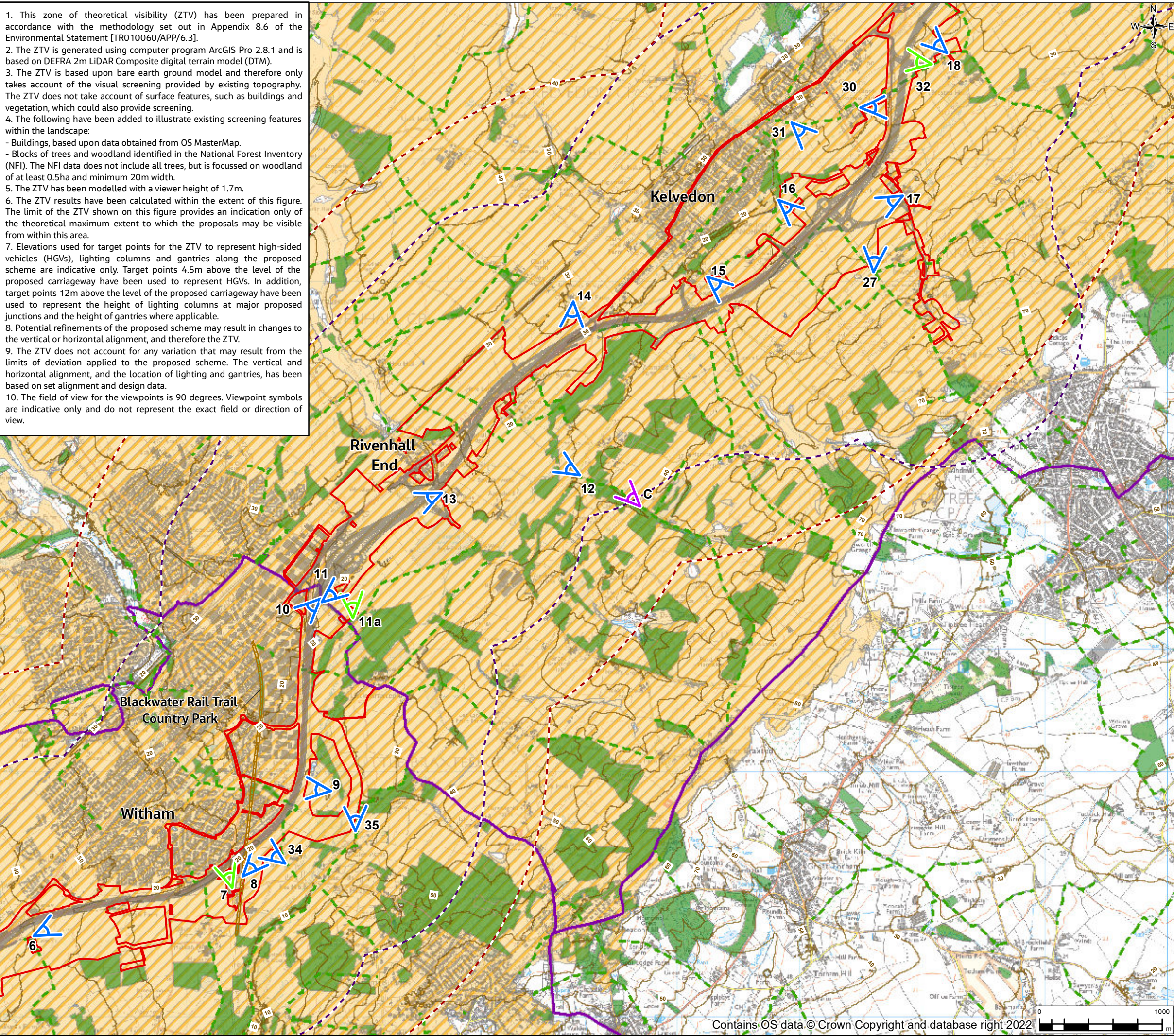


FIGURE 8.3

Legend

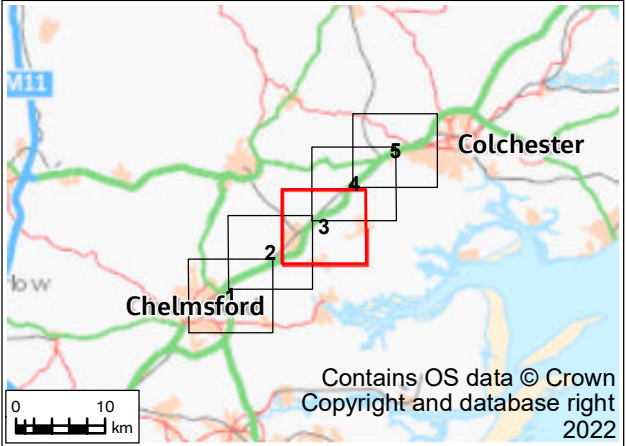
- Order Limits
- Proposed scheme
- Study area:
  - 1km buffer from Order Limits
  - 2km around proposed scheme centreline
- Public right of way
- National cycle route
- Regional cycle route
- Country park
- Contours at 10m intervals
- Theoretical visibility of HGV target points only
- Theoretical visibility of lighting column and gantry target points only


Existing screening features – see note 4

- Blocks of trees and woodland
- Buildings

Viewpoints assessed within Chapter 8: Landscape and visual [TR010060/APP/6.1]

- Representative viewpoints (1 - 35) - approximate position, extent and direction of view
- Representative viewpoint and photomontage location (2, 7, 11a, 22, 24 and 32) - approximate position, extent and direction of view
- Longer distance illustrative viewpoints (A - E) - approximate position, extent and direction of view



P01	19/07/22	For DCO application	ML	HB	HM	SG
Rev.	Rev. Date	Purpose of revision	Drawn	Check'd	Rev'd	Appr'd
Development Consent Order Drawing Number: TR010060/APP/6.2			APFP Regulation: APFP Regulation 5(2)(a)			
Client						
						
Project						
REGIONAL DELIVERY PARTNERSHIP A12 CHELMSFORD TO A120 WIDENING SCHEME						
Drawing Title						
ENVIRONMENTAL STATEMENT ZONE OF THEORETICAL VISIBILITY AND VIEWPOINTS - BARE EARTH SHEET 3 OF 5						
Drawing Status						
S4 – SUITABLE FOR STAGE APPROVAL						
Scale @ A3		1:30000	DO NOT SCALE Rev P01			
Jacobs No.		B36601D1				
Client No.		HE551497				
Drawing Number						
HE55 1497-JAC-LDC-SCHW-SK-GI-0083						

© Copyright 2021 Jacobs U.K. Limited. The concepts and information contained in this document are the property of Jacobs. Use or copying of this document in whole or in part without the written permission of Jacobs constitutes an infringement of copyright.

Limitation. This drawing has been prepared on behalf of, and for the exclusive use of Jacobs' Client, and is subject to, and issued in accordance with, the provisions of the contract between Jacobs and the Client. Jacobs accepts no liability or responsibility whatsoever for, or in respect of, any use of, or reliance upon, this drawing by any third party.



1. This zone of theoretical visibility (ZTV) has been prepared in accordance with the methodology set out in Appendix 8.6 of the Environmental Statement [TR010060/APP/6.3].

2. The ZTV is generated using computer program ArcGIS Pro 2.8.1 and is based on DEFRA 2m LiDAR Composite digital terrain model (DTM).

3. The ZTV is based upon bare earth ground model and therefore only takes account of the visual screening provided by existing topography. The ZTV does not take account of surface features, such as buildings and vegetation, which could also provide screening.

4. The following have been added to illustrate existing screening features within the landscape:

- Buildings, based upon data obtained from OS MasterMap.
- Blocks of trees and woodland identified in the National Forest Inventory (NFI). The NFI data does not include all trees, but is focussed on woodland of at least 0.5ha and minimum 20m width.

5. The ZTV has been modelled with a viewer height of 1.7m.

6. The ZTV results have been calculated within the extent of this figure. The limit of the ZTV shown on this figure provides an indication only of the theoretical maximum extent to which the proposals may be visible from within this area.

7. Elevations used for target points for the ZTV to represent high-sided vehicles (HGVs), lighting columns and gantries along the proposed scheme are indicative only. Target points 4.5m above the level of the proposed carriageway have been used to represent HGVs. In addition, target points 12m above the level of the proposed carriageway have been used to represent the height of lighting columns at major proposed junctions and the height of gantries where applicable.

8. Potential refinements of the proposed scheme may result in changes to the vertical or horizontal alignment, and therefore the ZTV.

9. The ZTV does not account for any variation that may result from the limits of deviation applied to the proposed scheme. The vertical and horizontal alignment, and the location of lighting and gantries, has been based on set alignment and design data.

10. The field of view for the viewpoints is 90 degrees. Viewpoint symbols are indicative only and do not represent the exact field or direction of view.

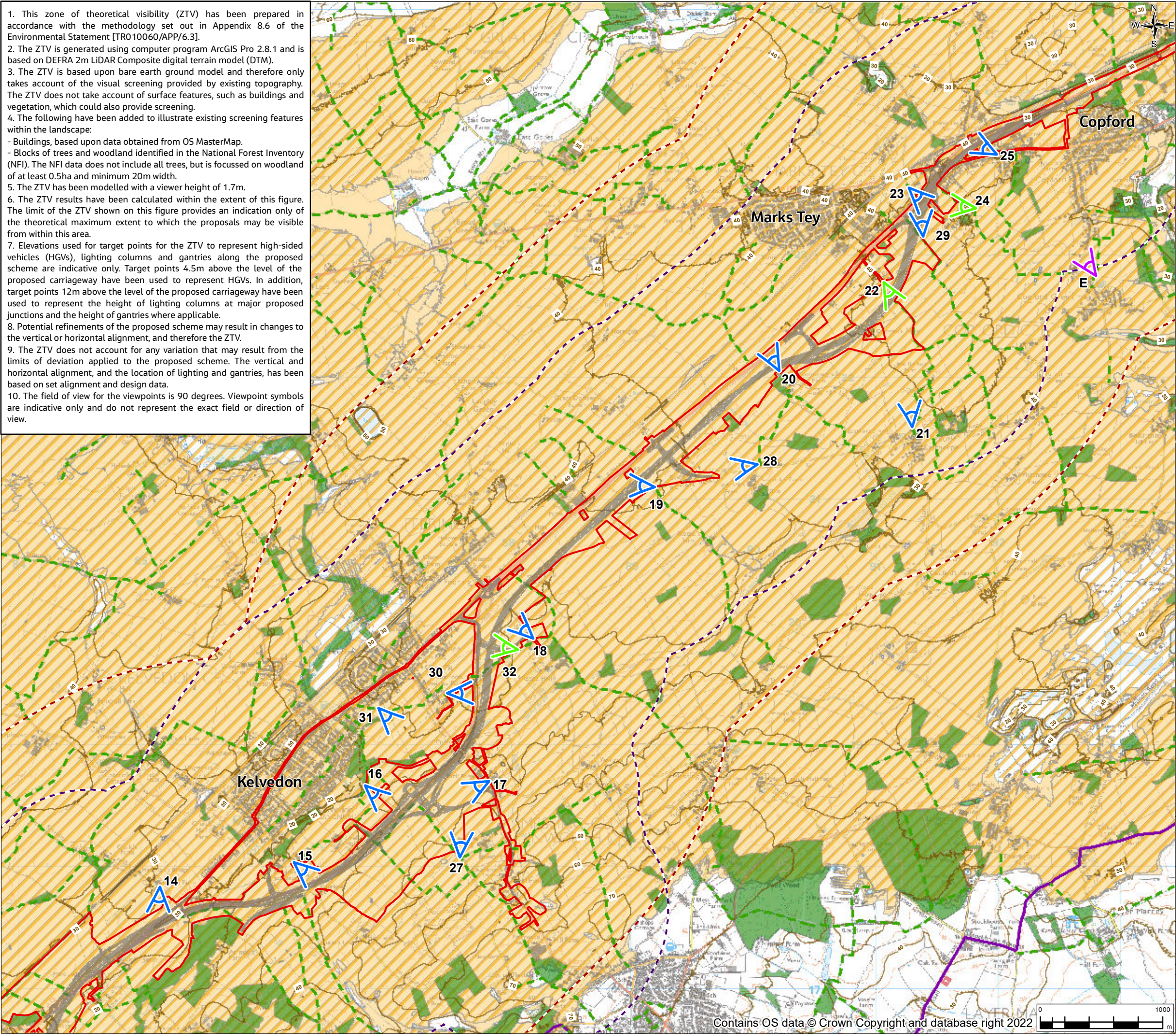


FIGURE 8.3

Legend

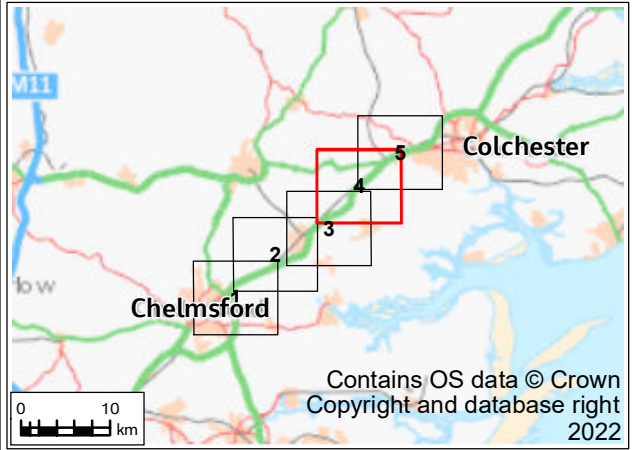
- Order Limits
- Proposed scheme
- Study area:
  - 1km buffer from Order Limits
  - 2km around proposed scheme centreline
- Public right of way
- National cycle route
- Regional cycle route
- Country park
- Contours at 10m intervals
- Theoretical visibility of HGV target points only
- Theoretical visibility of lighting column and gantry target points only


Existing screening features – see note 4

- Blocks of trees and woodland
- Buildings

Viewpoints assessed within Chapter 8: Landscape and visual [TR010060/APP/6.1]

- Representative viewpoints (1 - 35) - approximate position, extent and direction of view
- Representative viewpoint and photomontage location (2, 7, 11a, 22, 24 and 32) - approximate position, extent and direction of view
- Longer distance illustrative viewpoints (A - E) - approximate position, extent and direction of view



P01	19/07/22	For DCO application		ML	HB	HM	SG
Rev.	Rev. Date	Purpose of revision		Drawn	Check'd	Rev'd	Appr'd
Development Consent Order Drawing Number: TR010060/APP/6.2				APFP Regulation: APFP Regulation 5(2)(a)			
Client							
Project							
REGIONAL DELIVERY PARTNERSHIP A12 CHELMSFORD TO A120 WIDENING SCHEME							
Drawing Title		ENVIRONMENTAL STATEMENT ZONE OF THEORETICAL VISIBILITY AND VIEWPOINTS - BARE EARTH SHEET 4 OF 5					
Drawing Status		S4 – SUITABLE FOR STAGE APPROVAL					
Scale @ A3	1:30000					DO NOT SCALE	
Jacobs No.	B36601D1					Rev P01	
Client No.	HE551497						
Drawing Number		HE551497-JAC-LDC-SCHW-SK-GI-0084					
<small>© Copyright 2021 Jacobs U.K. Limited. The concepts and information contained in this document are the property of Jacobs. Use or copying of this document in whole or in part without the written permission of Jacobs constitutes an infringement of copyright. Limitation: This drawing has been prepared on behalf of, and for the exclusive use of Jacobs' Client, and is subject to, and issued in accordance with, the provisions of the contract between Jacobs and the Client. Jacobs accepts no liability or responsibility whatsoever for, or in respect of, any use of, or reliance upon, this drawing by any third party.</small>							

© Copyright 2021 Jacobs UK Limited. The concepts and information contained in this document are the property of Jacobs. Use or copying of this document in whole or in part without the written permission of Jacobs constitutes an infringement of copyright. Limitation: This drawing has been prepared on behalf of, and for the exclusive use of Jacobs' Client, and is subject to, and issued in accordance with, the provisions of the contract between Jacobs and the Client. Jacobs accepts no liability or responsibility whatsoever for, or in respect of, any use of, or reliance upon, this drawing by any third party.



1. This zone of theoretical visibility (ZTV) has been prepared in accordance with the methodology set out in Appendix 8.6 of the Environmental Statement [TR010060/APP/6.3].
2. The ZTV is generated using computer program ArcGIS Pro 2.8.1 and is based on DEFRA 2m LiDAR Composite digital terrain model (DTM).
3. The ZTV is based upon bare earth ground model and therefore only takes account of the visual screening provided by existing topography. The ZTV does not take account of surface features, such as buildings and vegetation, which could also provide screening.
4. The following have been added to illustrate existing screening features within the landscape:
  - Buildings, based upon data obtained from OS MasterMap.
  - Blocks of trees and woodland identified in the National Forest Inventory (NFI). The NFI data does not include all trees, but is focussed on woodland of at least 0.5ha and minimum 20m width.
5. The ZTV has been modelled with a viewer height of 1.7m.
6. The ZTV results have been calculated within the extent of this figure. The limit of the ZTV shown on this figure provides an indication only of the theoretical maximum extent to which the proposals may be visible from within this area.
7. Elevations used for target points for the ZTV to represent high-sided vehicles (HGVs), lighting columns and gantries along the proposed scheme are indicative only. Target points 4.5m above the level of the proposed carriageway have been used to represent HGVs. In addition, target points 12m above the level of the proposed carriageway have been used to represent the height of lighting columns at major proposed junctions and the height of gantries where applicable.
8. Potential refinements of the proposed scheme may result in changes to the vertical or horizontal alignment, and therefore the ZTV.
9. The ZTV does not account for any variation that may result from the limits of deviation applied to the proposed scheme. The vertical and horizontal alignment, and the location of lighting and gantries, has been based on set alignment and design data.
10. The field of view for the viewpoints is 90 degrees. Viewpoint symbols are indicative only and do not represent the exact field or direction of view.

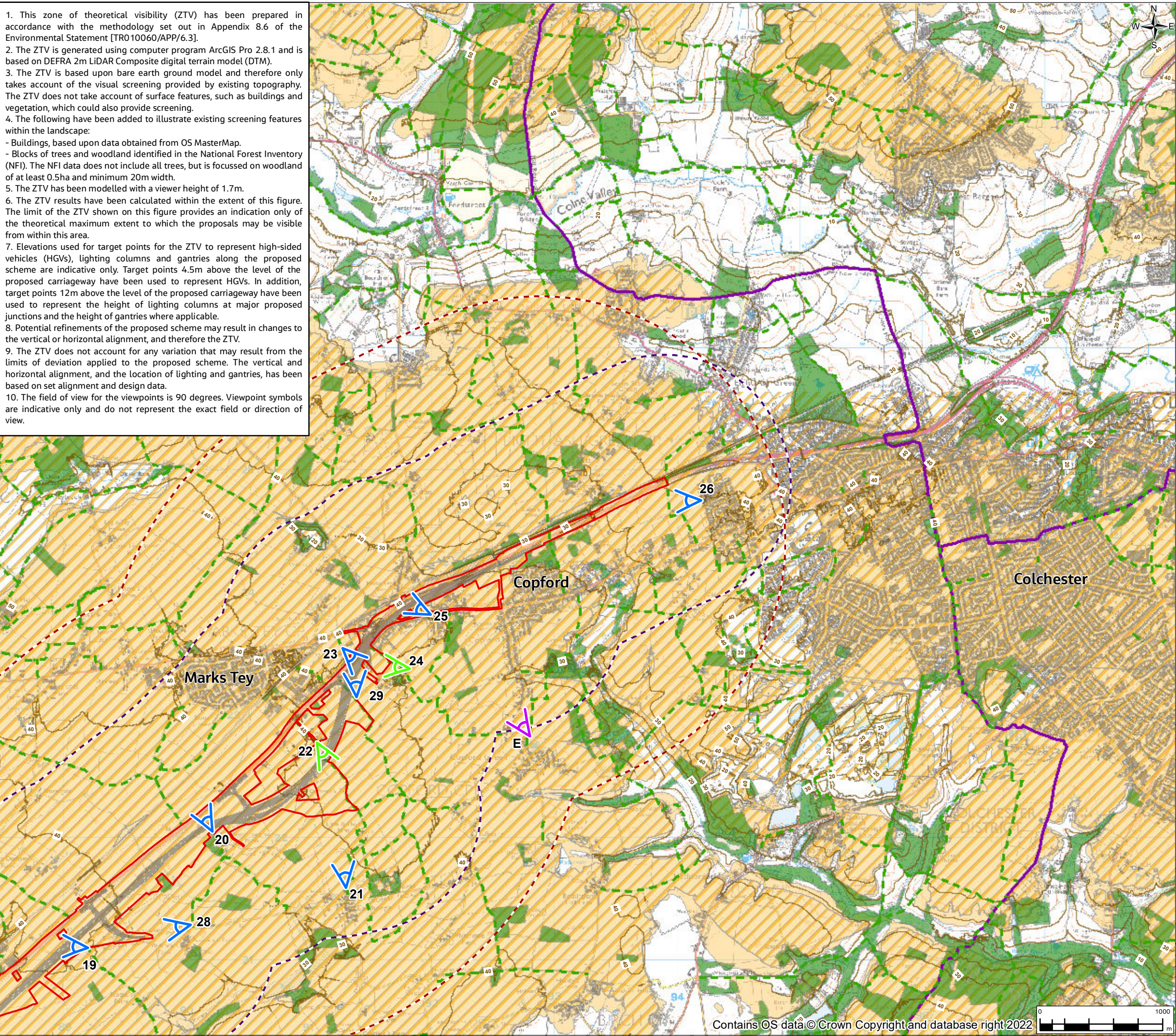


FIGURE 8.3

Legend

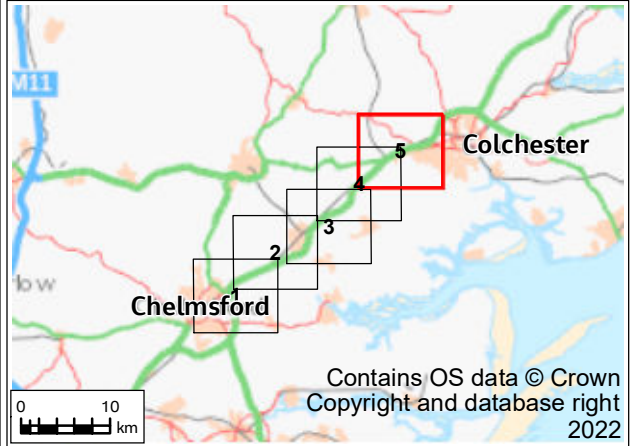
- Order Limits
- Proposed scheme
- Study area:
  - 1km buffer from Order Limits
  - 2km around proposed scheme centreline
- Public right of way
- National cycle route
- Regional cycle route
- Country park
- Contours at 10m intervals
- Theoretical visibility of HGV target points only
- Theoretical visibility of lighting column and gantry target points only


Existing screening features – see note 4

- Blocks of trees and woodland
- Buildings

Viewpoints assessed within Chapter 8: Landscape and visual [TR010060/APP/6.1]

- Representative viewpoints (1 - 35) - approximate position, extent and direction of view
- Representative viewpoint and photomontage location (2, 7, 11a, 22, 24 and 32) - approximate position, extent and direction of view
- Longer distance illustrative viewpoints (A - E) - approximate position, extent and direction of view



P01	19/07/22	For DCO application		ML	HB	HM	SG
Rev.	Rev. Date	Purpose of revision		Drawn	Check'd	Rev'd	Appr'd
Development Consent Order Drawing Number: TR010060/APP/6.2				APFP Regulation: APFP Regulation 5(2)(a)			
Client							
							
Project							
REGIONAL DELIVERY PARTNERSHIP A12 CHELMSFORD TO A120 WIDENING SCHEME							
Drawing Title							
ENVIRONMENTAL STATEMENT ZONE OF THEORETICAL VISIBILITY AND VIEWPOINTS - BARE EARTH SHEET 5 OF 5							
Drawing Status							
S4 – SUITABLE FOR STAGE APPROVAL							
Scale @ A3		1:30000			DO NOT SCALE		
Jacobs No.		B36601D1					
Client No.		HE551497			Rev P01		
Drawing Number							
HE55 1497-JAC-LDC-SCHW-SK-GI-0085							

© Copyright 2021 Jacobs U.K. Limited. The concepts and information contained in this document are the property of Jacobs. Use or copying of this document in whole or in part without the written permission of Jacobs constitutes an infringement of copyright.  
Limitation: This drawing has been prepared on behalf of, and for the exclusive use of Jacobs' Client, and is subject to, and issued in accordance with, the provisions of the contract between Jacobs and the Client. Jacobs accepts no liability or responsibility whatsoever for, or in respect of, any use of, or reliance upon, this drawing by any third party.

