

GBR BGS 1:50k Superficial

- ALLUVIUM - CLAY, SILT, SAND AND GRAVEL
- BRICEARTH - CLAY, SILT AND SAND
- GLACIOFLUVIAL DEPOSITS, MID PLEISTOCENE - SAND AND GRAVEL
- GLACIOLACUSTRINE DEPOSITS, MID PLEISTOCENE - CLAY AND SILT
- HEAD - CLAY, SILT, SAND AND GRAVEL
- INTERGLACIAL LACUSTRINE DEPOSITS - CLAY AND SILT

GBR BGS 1:50k Bedrock

- CRAIG GROUP - SAND
- LONDON CLAY FORMATION - CLAY, SILT AND SAND
- THANET FORMATION - SAND
- THANET FORMATION AND LAMBETH GROUP (UNDIFFERENTIATED) - CLAY, SILT AND SAND

KESGRAVE CATCHMENT SUBGROUP - SAND AND GRAVEL

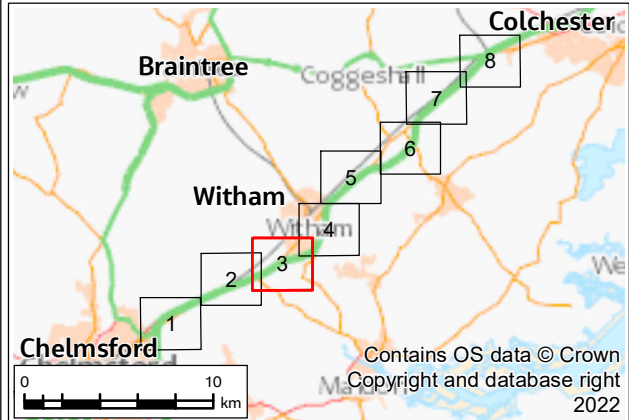
- LOWESTOFT FORMATION - DIAMICTON
- LOWESTOFT FORMATION - SAND AND GRAVEL
- PEAT - PEAT
- RIVER TERRACE DEPOSITS, SAND AND GRAVEL


FIGURE 10.1

Legend

- Proposed scheme alignment
- Proposed structures
- Railway
- Historical railway (dismantled)
- Exploratory Hole
- Discharge consent
- Made ground associated with railway
- Waterbody
- Proposed attenuation ponds
- Main river
- Private water supply
- Gasometer
- Former gasometer
- Former goods yard
- Fuel station
- Gas governor
- Obsolete fuel station
- Obsolete garage
- Pumping station
- Electricity substation
- Tank
- Waste transfer station
- Unidentified pit
- Licensed groundwater abstractions
- Licensed surface water abstractions
- Jacobs 2017/18 surface water monitoring points
- Licensed groundwater abstraction - public water supply

- Historical nursery
- Historical timber depot
- Historical mineral extraction site
- Cemetery
- Engine house
- Historical fire station
- Garage
- National Grid gas valve compound
- Historical sewage works
- Infilled pit
- Infilled pond
- Poultry farm
- Pumping station (former sewage works)
- Railway sidings and yard
- Rifle range
- Unspecified ground workings
- Historical unspecified mill
- Unspecified mound
- Unspecified tank
- Historical landfill site
- Industrial area
- Local Nature Reserve
- Site of Special Scientific Interest (SSSI)
- Proposed borrow pits
- Ground Investigation Exceedances
- Groundwater exceedance
- Soil exceedance
- Leachate exceedance
- Groundwater SPZs
- Zone I - Inner Protection Zone
- Zone II - Outer Protection Zone
- Zone III - Total Catchment
- Zone of Special Interest



P01	26/07/22	For DCO application		JC	IA	RL	SG
Rev.	Rev. Date	Purpose of revision		Drawn	Check'd	Rev'd	Appr'd
Development Consent Order Drawing Number: TR010060/APP/6.2				APFP Regulation: Regulation 5(2)(a)			
Client							
							
Project							
REGIONAL DELIVERY PARTNERSHIP A12 CHELMSFORD TO A120 WIDENING SCHEME							
Drawing Title							
ENVIRONMENTAL STATEMENT GEOLOGY AND SOILS LAND CONTAMINATION CONSTRAINTS PLAN SHEET 3 OF 8							
Drawing Status							
S4 – SUITABLE FOR STAGE APPROVAL							
Scale @ A3		1:10000			DO NOT SCALE		
Jacobs No.		B36601D1					
Client No.		HE551497			Rev P01		
Drawing Number							
HE551497-JAC-LDC-SCHW-SK-GI-0105							

© Copyright 2022 Jacobs UK Limited. The concepts and information contained in this document are the property of Jacobs. Use or copying of this document in whole or in part without the written permission of Jacobs constitutes an infringement of copyright. Limitation: This drawing has been prepared on behalf of, and for the exclusive use of, Jacobs' Client, and is subject to, and issued in accordance with, the provisions of the contract between Jacobs and the Client. Jacobs accepts no liability or responsibility whatsoever for, or in respect of, any use of, or reliance upon, this drawing by any third party.



Contains OS data © Crown Copyright and database right 2022

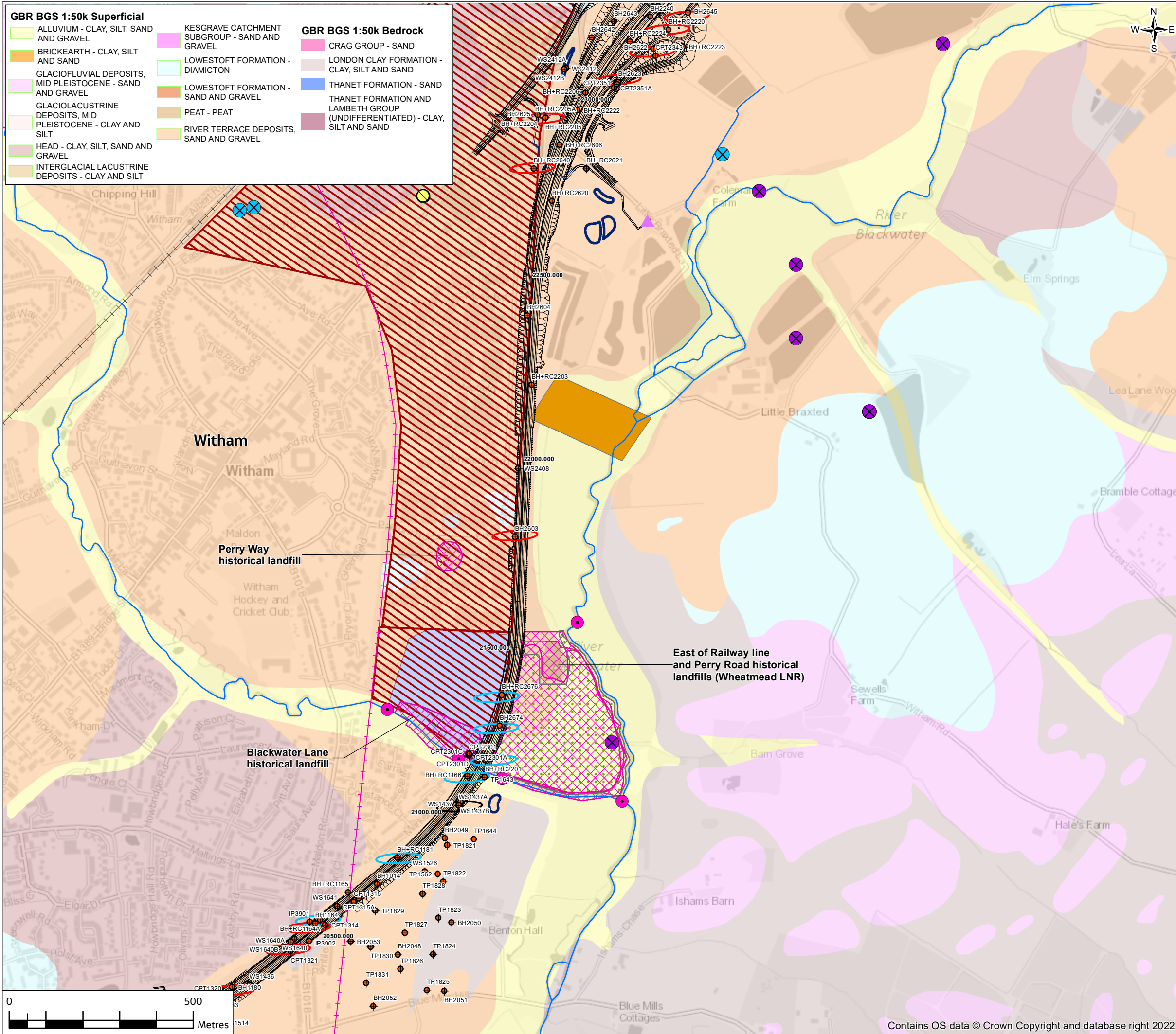
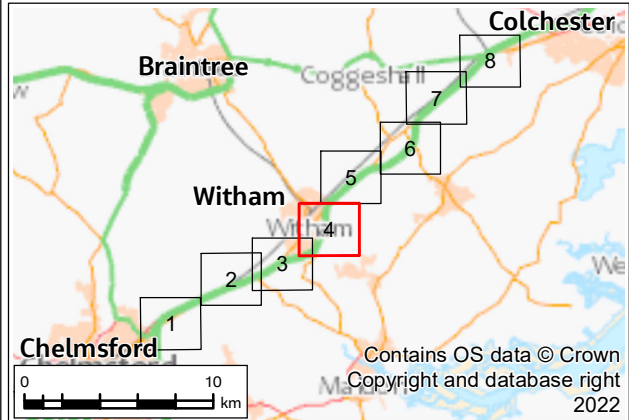



FIGURE 10.1

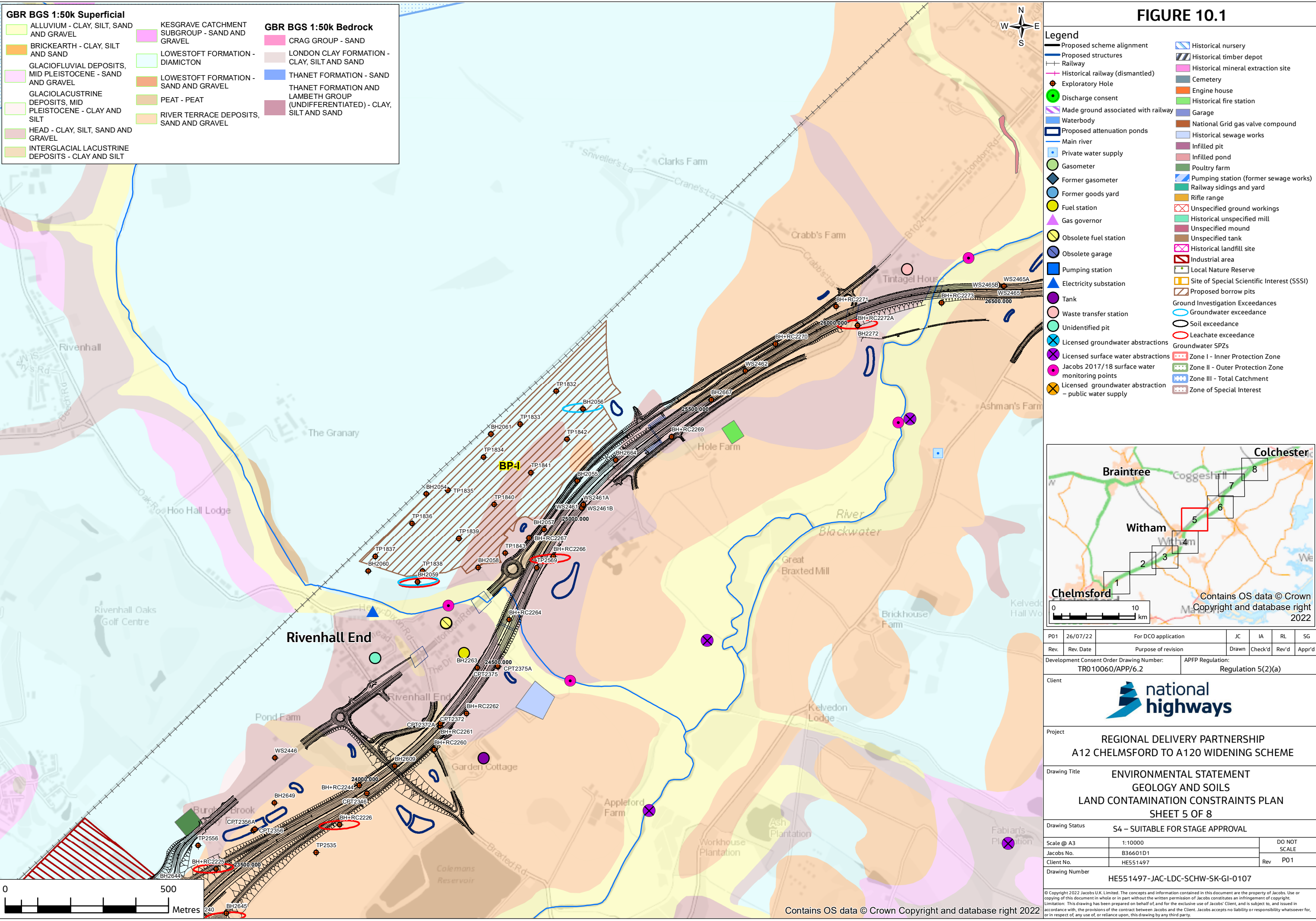
- Legend**
- Proposed scheme alignment
 - Proposed structures
 - Railway
 - Historical railway (dismantled)
 - Exploratory Hole
 - Discharge consent
 - Made ground associated with railway
 - Waterbody
 - Proposed attenuation ponds
 - Main river
 - Private water supply
 - Gasometer
 - Former gasometer
 - Former goods yard
 - Fuel station
 - Gas governor
 - Obsolete fuel station
 - Obsolete garage
 - Pumping station
 - Electricity substation
 - Tank
 - Waste transfer station
 - Unidentified pit
 - Licensed groundwater abstractions
 - Licensed surface water abstractions
 - Jacobs 2017/18 surface water monitoring points
 - Licensed groundwater abstraction - public water supply
 - Historical nursery
 - Historical timber depot
 - Historical mineral extraction site
 - Cemetery
 - Engine house
 - Historical fire station
 - Garage
 - National Grid gas valve compound
 - Historical sewage works
 - Infilled pit
 - Infilled pond
 - Poultry farm
 - Pumping station (former sewage works)
 - Railway sidings and yard
 - Rifle range
 - Unspecified ground workings
 - Historical unspecified mill
 - Unspecified mound
 - Unspecified tank
 - Historical landfill site
 - Industrial area
 - Local Nature Reserve
 - Site of Special Scientific Interest (SSSI)
 - Proposed borrow pits
 - Ground Investigation Exceedances
 - Groundwater exceedance
 - Soil exceedance
 - Leachate exceedance
 - Groundwater SPZs
 - Zone I - Inner Protection Zone
 - Zone II - Outer Protection Zone
 - Zone III - Total Catchment
 - Zone of Special Interest

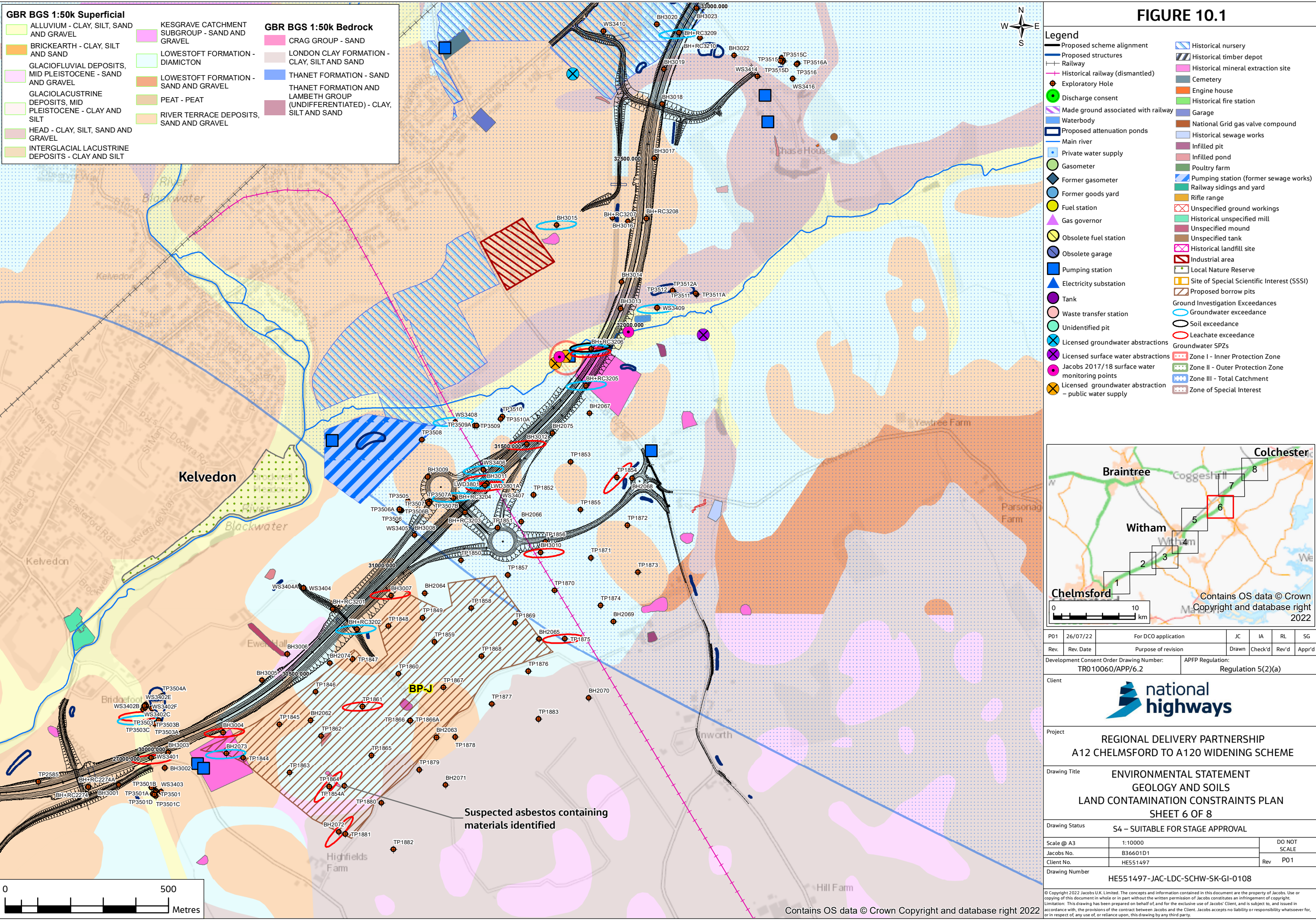


P01	26/07/22	For DCO application		JC	IA	RL	SG
Rev.	Rev. Date	Purpose of revision		Drawn	Check'd	Rev'd	Appr'd
Development Consent Order Drawing Number:				APFP Regulation:			
TR010060/APP/6.2				Regulation 5(2)(a)			
Client							
<div>national highways</div>							
Project							
REGIONAL DELIVERY PARTNERSHIP A12 CHELMSFORD TO A120 WIDENING SCHEME							
Drawing Title							
ENVIRONMENTAL STATEMENT GEOLOGY AND SOILS LAND CONTAMINATION CONSTRAINTS PLAN SHEET 4 OF 8							
Drawing Status							
S4 – SUITABLE FOR STAGE APPROVAL							
Scale @ A3		1:10000			DO NOT SCALE		
Jacobs No.		B36601D1					
Client No.		HE551497					
Drawing Number		HE551497-JAC-LDC-SCHW-SK-GI-0106					

© Copyright 2022 Jacobs U.K. Limited. The concepts and information contained in this document are the property of Jacobs. Use or copying of this document in whole or in part without the written permission of Jacobs constitutes an infringement of copyright. Limitation: This drawing has been prepared on behalf of, and for the exclusive use of Jacobs' Client, and is subject to, and issued in accordance with, the provisions of the contract between Jacobs and the Client. Jacobs accepts no liability or responsibility whatsoever for, in respect of, any use of, or reliance upon, this drawing by any third party.

© Copyright 2022 Jacobs UK Limited. The concepts and information contained in this document are the property of Jacobs. Use or copying of this document in whole or in part without the written permission of Jacobs constitutes an infringement of copyright. Limitation: This drawing has been prepared on behalf of, and for the exclusive use of Jacobs' Client, and is subject to, and issued in accordance with, the provisions of the contract between Jacobs and the Client. Jacobs accepts no liability or responsibility whatsoever for, or in respect of, any use of, or reliance upon, this drawing by any third party.





GBR BGS 1:50k Superficial

- ALLUVIUM - CLAY, SILT, SAND AND GRAVEL
- BRICEARTH - CLAY, SILT AND SAND
- GLACIOFLUVIAL DEPOSITS, MID PLEISTOCENE - SAND AND GRAVEL
- GLACIOLACUSTRINE DEPOSITS, MID PLEISTOCENE - CLAY AND SILT
- HEAD - CLAY, SILT, SAND AND GRAVEL
- INTERGLACIAL LACUSTRINE DEPOSITS - CLAY AND SILT

GBR BGS 1:50k Bedrock

- CRAIG GROUP - SAND
- LONDON CLAY FORMATION - CLAY, SILT AND SAND
- THANET FORMATION - SAND
- THANET FORMATION AND LAMBETH GROUP (UNDIFFERENTIATED) - CLAY, SILT AND SAND

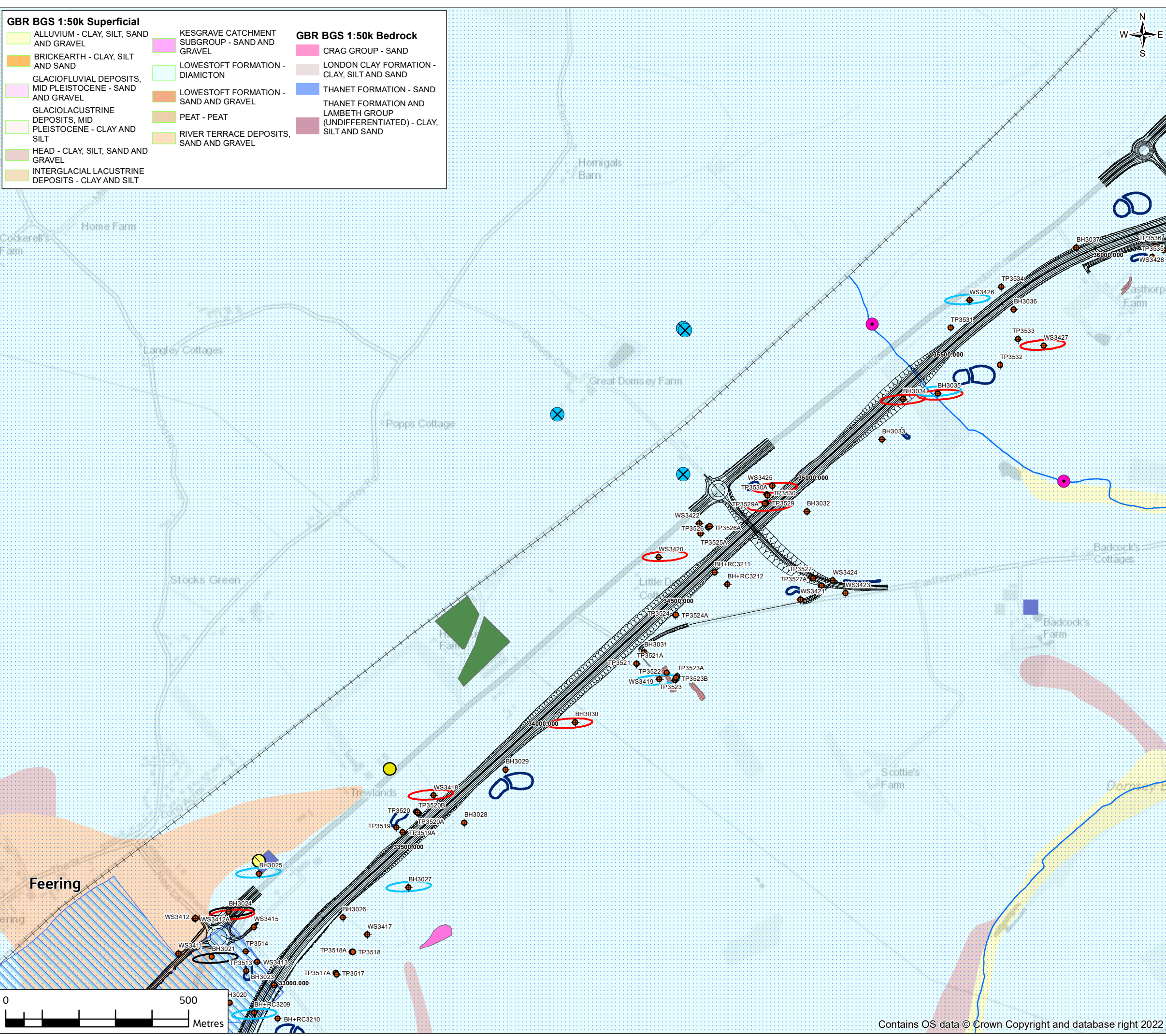
KESGRAVE CATCHMENT SUBGROUP - SAND AND GRAVEL

- LOWESTOFT FORMATION - DIAMICTON
- LOWESTOFT FORMATION - SAND AND GRAVEL
- PEAT - PEAT
- RIVER TERRACE DEPOSITS, SAND AND GRAVEL

FIGURE 10.1

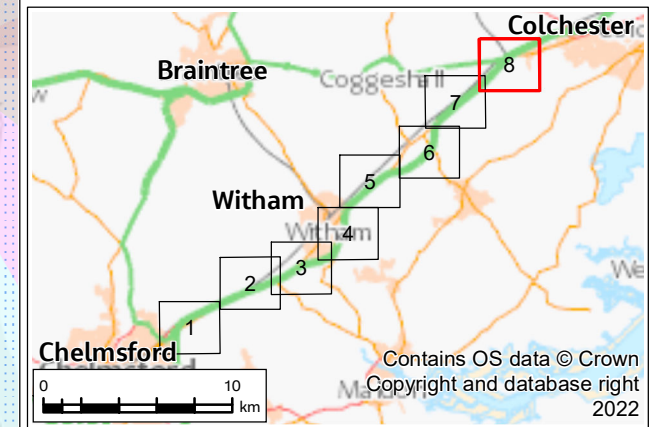
Legend


- Proposed scheme alignment
- Proposed structures
- Railway
- Historical railway (dismantled)
- Exploratory Hole
- Discharge consent
- Made ground associated with railway
- Waterbody
- Proposed attenuation ponds
- Main river
- Private water supply
- Gasometer
- Former gasometer
- Former goods yard
- Fuel station
- Gas governor
- Obsolete fuel station
- Obsolete garage
- Pumping station
- Electricity substation
- Tank
- Waste transfer station
- Unidentified pit
- Licensed groundwater abstractions
- Licensed surface water abstractions
- Jacobs 2017/18 surface water monitoring points
- Licensed groundwater abstraction - public water supply
- Historical nursery
- Historical timber depot
- Historical mineral extraction site
- Cemetery
- Engine house
- Historical fire station
- Garage
- National Grid gas valve compound
- Historical sewage works
- Infilled pit
- Infilled pond
- Poultry farm
- Pumping station (former sewage works)
- Railway sidings and yard
- Rifle range
- Unspecified ground workings
- Historical unspecified mill
- Unspecified mound
- Unspecified tank
- Historical landfill site
- Industrial area
- Local Nature Reserve
- Site of Special Scientific Interest (SSSI)
- Proposed borrow pits
- Ground Investigation Exceedances
- Groundwater exceedance
- Soil exceedance
- Leachate exceedance
- Groundwater SPZs
- Zone I - Inner Protection Zone
- Zone II - Outer Protection Zone
- Zone III - Total Catchment
- Zone of Special Interest



- GBR BGS 1:50k Superficial**
 - ALLUVIUM - CLAY, SILT, SAND AND GRAVEL
 - BRICEARTH - CLAY, SILT AND SAND
 - GLACIOFLUVIAL DEPOSITS, MID PLEISTOCENE - SAND AND GRAVEL
 - GLACIOLACUSTRINE DEPOSITS, MID PLEISTOCENE - CLAY AND SILT
 - HEAD - CLAY, SILT, SAND AND GRAVEL
 - INTERGLACIAL LACUSTRINE DEPOSITS - CLAY AND SILT
- GBR BGS 1:50k Bedrock**
 - CRAG GROUP - SAND
 - LONDON CLAY FORMATION - CLAY, SILT AND SAND
 - THANET FORMATION - SAND
 - THANET FORMATION AND LAMBETH GROUP (UNDIFFERENTIATED) - CLAY, SILT AND SAND
- KESGRAVE CATCHMENT SUBGROUP - SAND AND GRAVEL**
 - LOWESTOFT FORMATION - DIAMICTON
 - LOWESTOFT FORMATION - SAND AND GRAVEL
 - PEAT - PEAT
 - RIVER TERRACE DEPOSITS, SAND AND GRAVEL

- Legend**
 - Proposed scheme alignment
 - Proposed structures
 - Railway
 - Historical railway (dismantled)
 - Exploratory Hole
 - Discharge consent
 - Made ground associated with railway
 - Waterbody
 - Proposed attenuation ponds
 - Main river
 - Private water supply
 - Gasometer
 - Former gasometer
 - Former goods yard
 - Fuel station
 - Gas governor
 - Obsolete fuel station
 - Obsolete garage
 - Pumping station
 - Electricity substation
 - Tank
 - Waste transfer station
 - Unidentified pit
 - Licensed groundwater abstractions
 - Licensed surface water abstractions
 - Jacobs 2017/18 surface water monitoring points
 - Licensed groundwater abstraction - public water supply
 - Historical nursery
 - Historical timber depot
 - Historical mineral extraction site
 - Cemetery
 - Engine house
 - Historical fire station
 - Garage
 - National Grid gas valve compound
 - Historical sewage works
 - Infilled pit
 - Infilled pond
 - Poultry farm
 - Pumping station (former sewage works)
 - Railway sidings and yard
 - Rifle range
 - Unspecified ground workings
 - Historical unspecified mill
 - Unspecified mound
 - Unspecified tank
 - Historical landfill site
 - Industrial area
 - Local Nature Reserve
 - Site of Special Scientific Interest (SSSI)
 - Proposed borrow pits
 - Ground Investigation Exceedances
 - Groundwater exceedance
 - Soil exceedance
 - Leachate exceedance
 - Groundwater SPZs
 - Zone I - Inner Protection Zone
 - Zone II - Outer Protection Zone
 - Zone III - Total Catchment
 - Zone of Special Interest



P01	26/07/22	For DCO application		JC	IA	RL	SG
Rev.	Rev. Date	Purpose of revision		Drawn	Check'd	Rev'd	Appr'd
Development Consent Order Drawing Number: TR0 10060/APP/6.2				APFP Regulation: Regulation 5(2)(a)			
Client							
							
Project							
REGIONAL DELIVERY PARTNERSHIP A12 CHELMSFORD TO A120 WIDENING SCHEME							
Drawing Title							
ENVIRONMENTAL STATEMENT GEOLOGY AND SOILS LAND CONTAMINATION CONSTRAINTS PLAN SHEET 8 OF 8							
Drawing Status							
S4 – SUITABLE FOR STAGE APPROVAL							
Scale @ A3	1:10000					DO NOT SCALE	
Jacobs No.	B36601D1					Rev	
Client No.	HE551497					P01	
Drawing Number							
HE551497-JAC-LDC-SCHW-SK-GI-0110							

© Copyright 2022 Jacobs UK Limited. The concepts and information contained in this document are the property of Jacobs. Use or copying of this document in whole or in part without the written permission of Jacobs constitutes an infringement of copyright. Limitation: This drawing has been prepared on behalf of, and for the exclusive use of Jacobs' Client, and is subject to, and issued in accordance with, the provisions of the contract between Jacobs and the Client. Jacobs accepts no liability or responsibility whatsoever for, or in respect of, any use of, or reliance upon, this drawing by any third party.

Contains OS data © Crown Copyright and database right 2022