

PINS document reference 5.4.9.1

APPENDIX ES9.1

**APPROVED RESTORATION SCHEME FOR THE EXISTING ENRMF (DJA PLAN
1960/008A)**

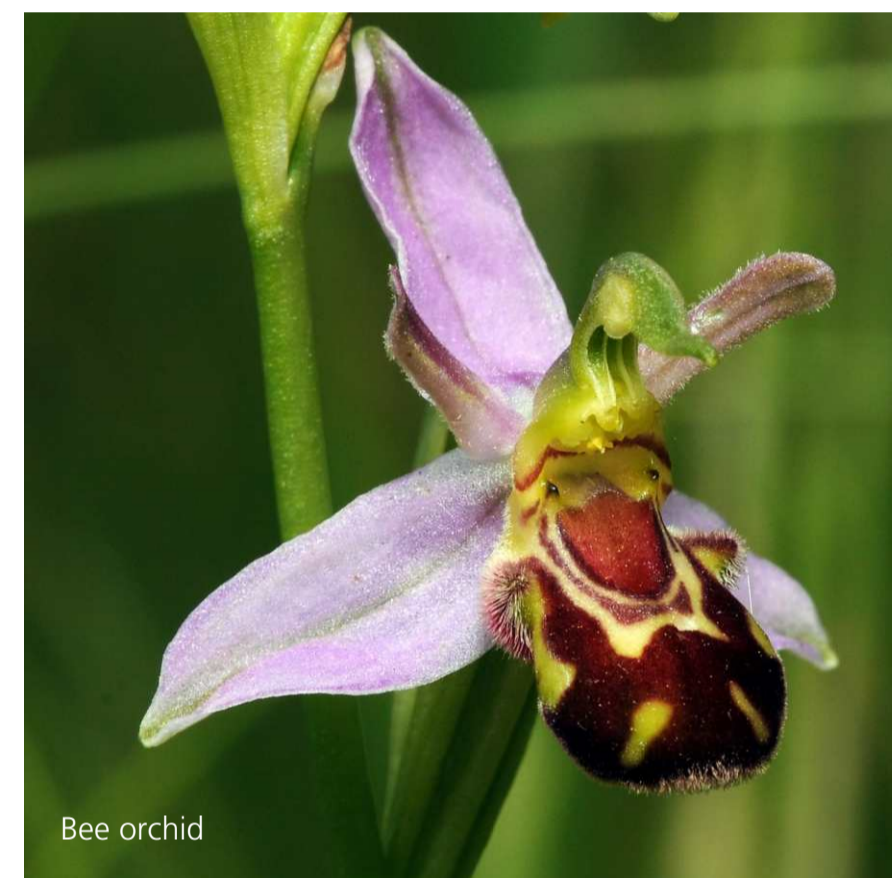
RESTORATION PRINCIPLES

- BIODIVERSITY ACTION PLAN COMPLIANT, GIVING OPPORTUNITIES FOR BUTTERFLIES, REPTILES, BIRDS AND DORMICE.
- REINFORCES LOCAL LANDSCAPE CHARACTER THROUGH USE OF WOODED HILL TOP AND HEDGEROWS.
- HEDGEROWS ON BANKS OFFER POTENTIAL FOR SOUTH FACING SLOPES FOR REPTILE HABITATS.
- HAZEL AND HONEYSUCKLE INCLUDED FOR DORMICE.
- WOODLAND REFLECTS THE MIX OF PLANTS FOUND IN THE COLLYWESTON WOOD SSSI.



WOODLAND SPECIES:

- Acer campestre - Field maple
- Fraxinus excelsior - Ash
- Corylus avellana - Hazel
- Quercus robur - English oak
- Quercus petraea - Sessile oak



KEY:
 APPLICATION BOUNDARY

A 05.09.11 Amendments to hedge sketch and annotation
 Revision

DAVID JARVIS ASSOCIATES
 planning development landscape environment
 DAVID JARVIS ASSOCIATES LIMITED
 1 Tennyson Street Swindon Wiltshire SN1 5DT
 Tel: 01793 612173 Fax: 01793 613625
 Email: mail@davidjarvis.biz

Client
AUGEAN PLC

Project
EAST NORTHANTS RESOURCE MANAGEMENT FACILITY

Drawing Title
RESTORATION SCHEME

Scale **NTS** Date **MARCH 2011**
 Drawing No. **1960/008A**

- HEDGEROW SPECIES:**
SHRUBS:
 Crataegus monogyna - Hawthorn
 Euonymus europaeus - Spindle
 Ligustrum vulgare - Wild privet
 Lonicera periclymenum - Honeysuckle
 Prunus spinosa - Blackthorn
 Rosa canina - Dog rose
 Sambucus nigra - Elder

- TREES:**
 Acer campestre - Field maple
 Fraxinus excelsior - Ash
 Corylus avellana - Hazel
 Quercus robur - English oak
 Quercus petraea - Sessile oak

